

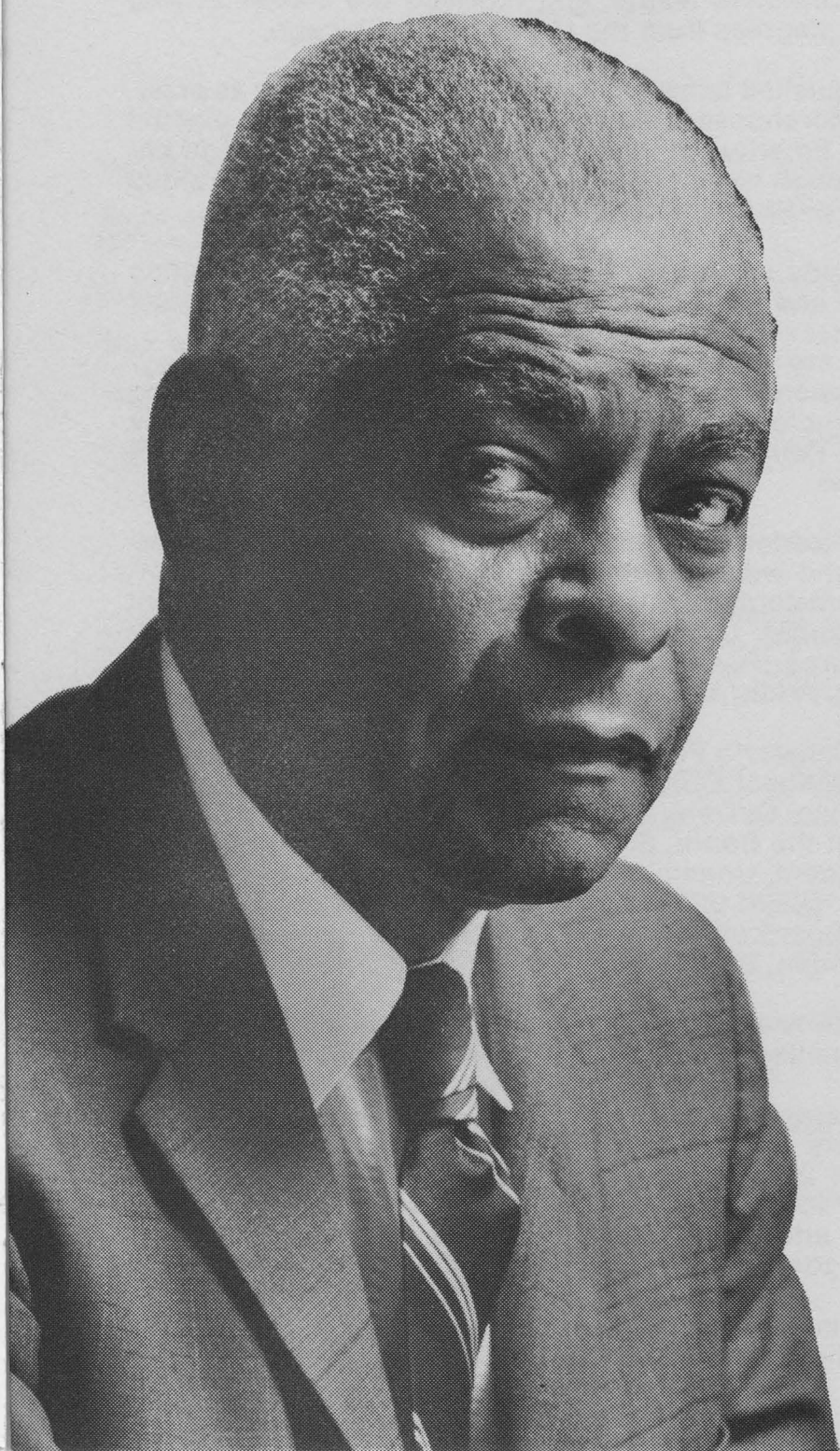
ELECT

Benjamin E. Mays

Board of Education

7th Ward

October 7, 1969



... qualifications of Dr. Benjamin E. Mays

It is rare and seldom that the voter is offered the qualifications belonging to **Benjamin E. Mays**, as candidate for the Atlanta Board of Education.

Benjamin E. Mays has no equal in Educational Training, Educational Leadership, Educational Honors, Educational Research and Educational Literature.

As a resident of the city for 38 years, he has continued to give dedicated service to the community. Some illustrations are: President of the Board of Directors, Butler Street YMCA; Director, Greater Atlanta Housing Development Corporation; Co-chairman, Mayor Allen's Housing Resources Comm.; Member, Advisory Council on Urban Renewal; Citizens Committee on Georgia Assembly; Member, Georgia Higher Education Facilities Commission; Member, Providence Baptist Church.

Dr. Mays was graduated and elected Phi Beta Kappa at Bates College, Lewiston, Maine, and received the Master of Arts and Ph.D. degrees from the University of Chicago.

He distinguished himself through meritorius service as president of Morehouse College for 27 years, and was elected President Emeritus in 1967. The same year, the college became, through his efforts, the fourth in Georgia to be granted a chapter of Phi Beta Kappa.

Among many other activities, he is now serving as Visiting Professor and Advisor to the President of Michigan State University.

His professional career in education spans 33 years, serving as an instructor of English and mathematics, and Dean of the School of Religion, Howard University, prior to president of Morehouse.

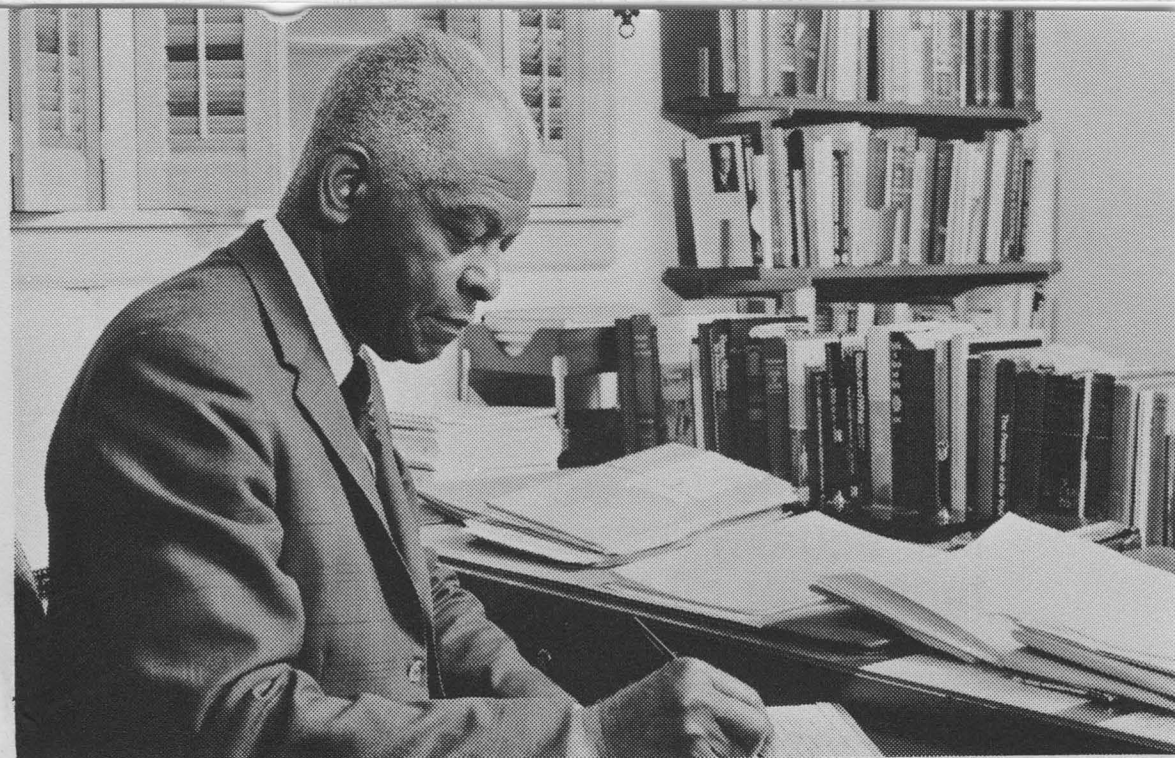
Dr. Mays' leadership contributions have been made on the national and world scene in areas as: Leader, Youth Conference, Amsterdam, Holland; Vice President, World Student Fund; Member, U. S. National Commission for UNESCO; Peace Corps Representative, All-African Conference on Education, Addis Ababa, Ethiopia.

Trustee, Dansforth Foundation
Trustee, National Fund for Medical Education
Co-chairman, Citizens Crusade Against Poverty
Member of the Board, Southern Educational Foundation
Past President, United Negro College Fund, Inc.
Chairman, Board of Trustees, Benedict College
Member, Board of Trustees, Paine College
Vice chairman, Board of Trustees, Palmer Institute

He has received a total of 24 honorary degrees from colleges and universities in the U. S. and abroad.

A list of literary achievements shows authorship of six books; 15 chapters and sections for other books; 70 articles for more than 20 magazines and journals; and for 23 years a columnist for the Pittsburgh Courier Newspaper, whereas Dr. Mays attempted to communicate his insight into the problems confronting modern society.

Dr. Benjamin E. Mays offers the voter unusual qualifications for the Board of Education.



BENJAMIN E. MAYS
3316 PAMLICO DRIVE, SOUTHWEST
ATLANTA, GEORGIA 30311

Dear Fellow Concerned Citizens:

There are major problems in the Atlanta Public School System.

The Atlanta School System is plagued with overcrowding.

Many of the teaching and learning innovations that have proved their worth in other school systems across the country have not been employed here.

There are inadequate opportunities provided by the Atlanta Public School System for vocational and technical education.

Equal educational opportunities for the poor are not a reality in the Atlanta Public School System.

These conditions, if they are allowed to remain unchanged, will continue to rob our youth - the future leaders of our city - of the quality of education and training they need to perform the responsibilities that will be required of them in the coming years.

I am an educator by training and profession. I believe that most of the problems we face in our efforts to improve the quality of life in this city are satellite problems to the improvement of our educational system.

I will work tirelessly as a member of the Atlanta Board of Education to develop responsiveness to the major problems, to provide leadership in solving them, and to improve the communications between the Board and the Atlanta community.

I ask for your support and your vote on October 7, 1969.

Sincerely,

Benjamin E. Mays

ATLANTA SCHOOLS NEED MORE . . .

- ✓ **Leadership** on the Board of Education to direct the resources of the community toward ways of achieving equality in educational opportunities for all children.
- ✓ **Responsiveness** among the members of the Board of Education to the wishes and support of all Atlantans who want quality education for their children.
- ✓ **Communication** among members of the Board of Education, the school administrators and the Atlanta community.

**Atlanta Schools Need
Benjamin E. Mays
on the
Board Of Education**

because of his proved
Leadership • Responsiveness
and ability to Communicate with people

CAMPAIGN COMMITTEE

Robert Brisbane
Chairman

Tobe Johnson
Co-chairman

Butler Henderson
Treasurer