

From: _____
Name: _____
Address: _____

To:

League of Women Voters of Atlanta-Fulton County
1036 Peachtree St., N.E.
Room 114
Atlanta, Georgia 30309

STAMP

HOW TO JOIN THE LEAGUE

Accept this invitation. Tear off the last page of this leaflet and send with your check to:

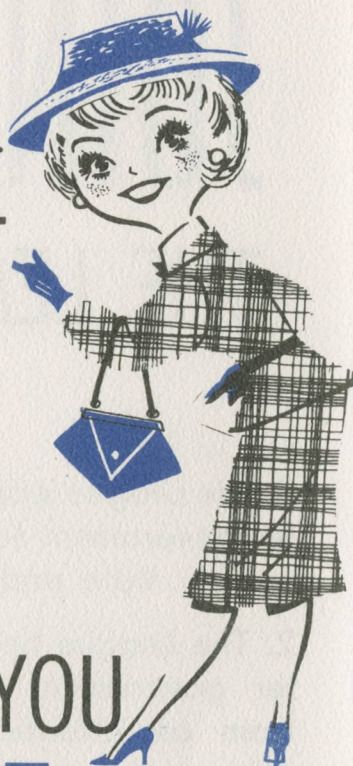
League of Women Voters
of Atlanta-Fulton
County
1036 Peachtree St., N.E.
Room 114
Atlanta, Georgia 30309

WHAT WILL YOU RECEIVE FOR THESE DUES?

- The NATIONAL VOTER, the GEORGIA VOTER, FACTS — three excellent bulletins concerning vital issues in your government.
- An opportunity to belong to a lively discussion unit, attend special workshops, general membership meetings — a chance to be a more effective citizen through an organized group working for better government.
- An opportunity to get factual, objective information on matters of public concern.

WHO DECIDES WHAT TO STUDY?

The members themselves choose what the League as a whole will study and, after study, what action it will take. The program locally is adopted by majority vote at the Annual Meeting; on the State and National levels at each biennial convention.



FOR WHAT KIND OF ISSUES

DOES THE LEAGUE WORK?

The League works for governmental issues which arise out of the needs of the local community, the state and the nation.

National: The League now supports and has long supported the *United Nations*, *world economic development*, including a sound economy at home and a liberal U. S. trade policy, *aid and technical assistance to developing nations*, and *long range coordinated development of our water resources*. Recently the League has turned its attention to the *apportionment of state legislatures*, and the *development of human resources* as it is affected by equality of opportunity.

State: The Georgia League has directed its efforts to *state constitutional revision*, *improvement of public education*, *equitable representation in the legislature*, *fair election laws* and *improved legislative procedures*.

Local: The Atlanta League works for *improvement in the structure and efficiency of our city and county government*. We are concerned with the problems of *metropolitan growth*, *urban services*, and the *quality of our education and welfare facilities*.



WANT TO KNOW ABOUT...

YOUR CITY?
(and how it works)

YOUR
STATE?

YOUR
COUNTRY?

YOUR
WORLD?



THEN **JOIN** THE
LEAGUE of **WOMEN**
VOTERS



WHAT IS THE LEAGUE?

A nonpartisan organization of more than 145,000 women in the 50 states — 800 of these women in Atlanta — whose purpose is to encourage all citizens to take part in their government. Like government, it operates on three levels — national, state and local.

WHO MAY BELONG?

Any woman of voting age who is a citizen is urged to join. Others may become associate members.

HOW DOES IT WORK?

League members usually belong to a neighborhood discussion unit if they want to get the most out of their membership. These groups meet at regular intervals, some during the day, some in the evening. Several units for business women meet downtown. Items discussed deal with national, state or local issues. General membership meetings, held during the day and in the evenings, enable non-unit members to participate also.



HOW MUCH TIME DOES IT TAKE?

It can take as little or as much as you care to give. Practically all the work of the League is done through the volunteer efforts of its members.

HOW MUCH DOES IT COST?

Membership is \$5.00 per year, a nominal fee to enable every woman to join.



WHY JOIN THE LEAGUE?



1. The League works for better government for the city, county, state and nation.
2. The League believes better government will result from an informed citizenship.
3. The League's constant effort is to inform its members and the community. Its Voters Service is a continuous, year round activity.
4. The League furnishes non-partisan, unbiased information favoring no special interest, representing no particular group or section.
5. The League carefully selects issues on which it can be effective.
6. The League first studies, then acts, to achieve its goals.
7. The League studies facts, as opposed to conjecture.
8. The League acts through developing public opinion, opposing or supporting specific legislation.
9. The League gives any woman the opportunity to increase her effectiveness as a citizen by joining with many others having the common objective of better government.

876-0732

LEAGUE OF WOMEN VOTERS OF ATLANTA-FULTON COUNTY
1036 Peachtree St., N.E., Suite 114, Atlanta, Georgia 30309

1. I'll join

Annual Dues (from April 1) Regular \$5.00, Contributing \$10.00 (Dues include: Subscriptions to Facts, Georgia Voter, National Voter).

2. I am very interested. Please send additional information

My name is

Address

City

State

Phone