

OCT 13 1960

BULLETIN OF THE

Interdenominational Theological Center

Cooperating Seminaries

GAMMON THEOLOGICAL SEMINARY

MOREHOUSE SCHOOL OF RELIGION

PHILLIPS SCHOOL OF THEOLOGY

TURNER THEOLOGICAL SEMINARY

Announcements

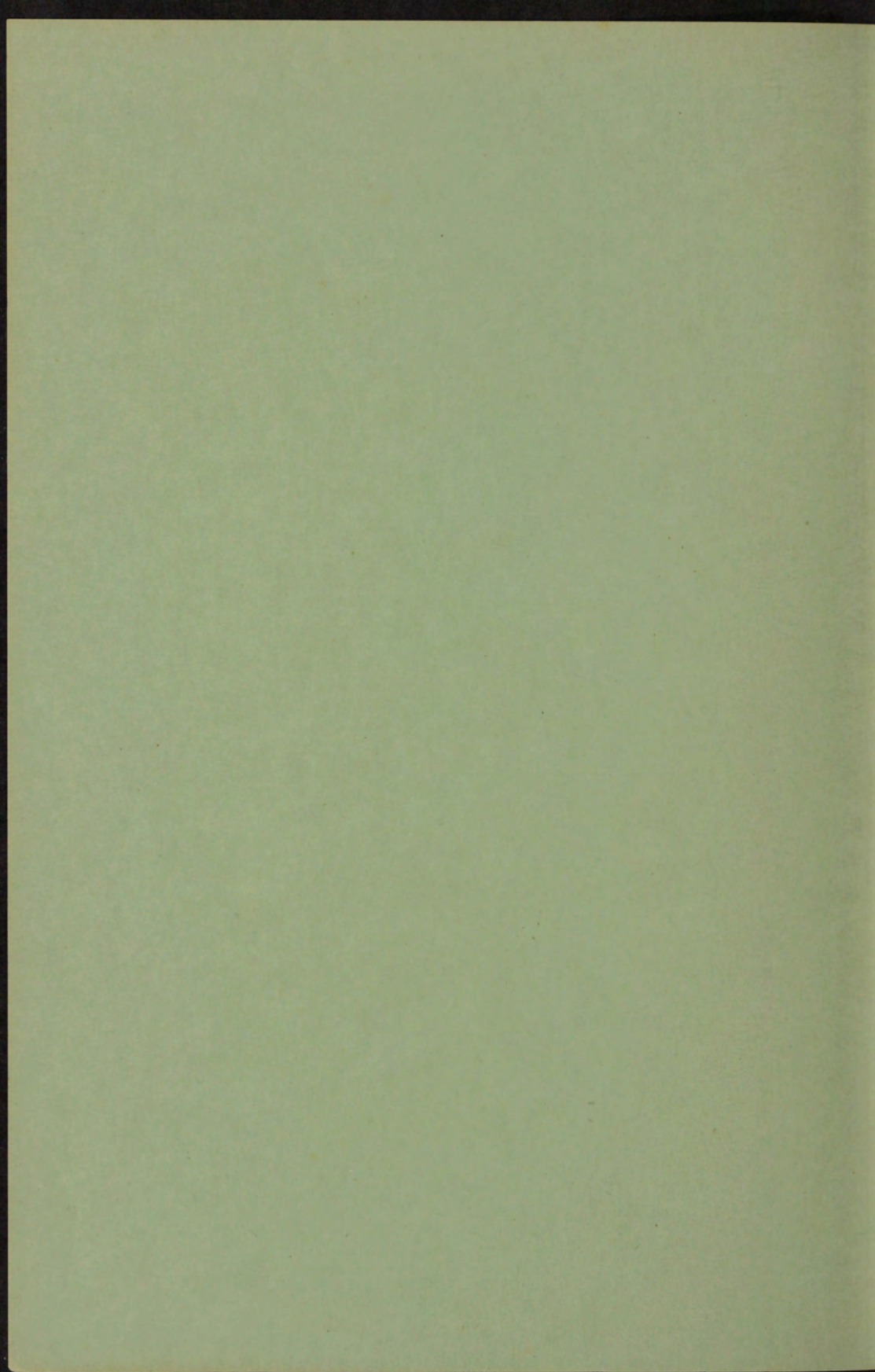
1960 - 1961

VOLUME II

JULY, 1960

BOX 6583, STATION G

ATLANTA 15, GEORGIA



BULLETIN OF THE

Interdenominational Theological Center

Cooperating Seminaries

GAMMON THEOLOGICAL SEMINARY

MOREHOUSE SCHOOL OF RELIGION

PHILLIPS SCHOOL OF THEOLOGY

TURNER THEOLOGICAL SEMINARY

Announcements

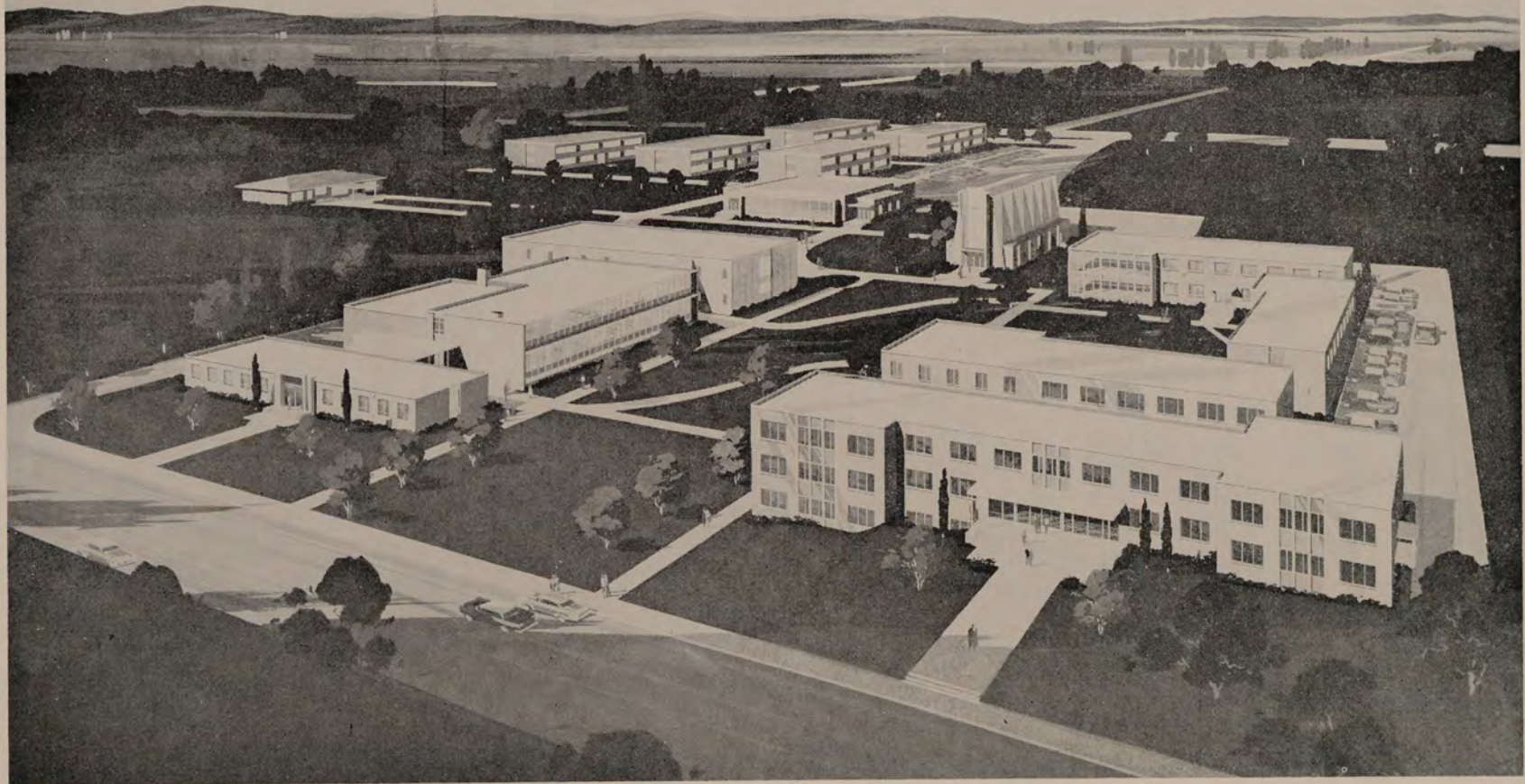
1960 - 1961

VOLUME II

JULY, 1960

BOX 6583, STATION G

ATLANTA 15, GEORGIA



SKETCH OF THE INTERDENOMINATIONAL THEOLOGICAL CENTER

TABLE OF CONTENTS

	<i>Page</i>
CALENDAR, 1960-1961	5
TRUSTEES, INTERDENOMINATIONAL THEOLOGICAL CENTER	6
ADMINISTRATIVE STAFF	7
FACULTY	8
THE INTERDENOMINATIONAL THEOLOGICAL CENTER	10
THE PARTICIPATING SEMINARIES	11
STATEMENT OF THE CENTER'S PURPOSE	18
STUDENT LIFE AND ACTIVITIES	18
CHAPEL SERVICES	19
ADMINISTRATIVE REGULATIONS	20
Fees and Expenses	20
Housing	20
Financial Aid	21
ADMISSION, REGISTRATION AND DEGREE PROGRAMS	22
I. General Terms of Admission	22
II. Registration	22
Grades	24
Classification	25
III. Degree Programs	25
A. Bachelor of Divinity Program	26
Schedule of Required Courses	30
Special Requirements	30
B. Master of Sacred Theology Program	31
C. Master of Religious Education Program	34
THE COURSE OF STUDY	37
I. Division of Biblical Studies	38
II. Division of Historical Studies	44
III. Division of Theological Studies	47
IV. Division of Practical Studies	50
THE STUDENT REGISTER	62

CALENDAR 1960 - 1961

FIRST SEMESTER

1960

September 15-19, Thursday through Monday.....Orientation for
New Students
September 20, Tuesday.....Registration for First Semester
September 21, Wednesday, 8:00 A.M.....Classes Begin
September 22, Thursday, 10:00 A.M.....First Chapel Service
September 28, Wednesday.....Last Day for Changes in Registration
November (dates to be announced).....Annual Sermon Series
November 15, Tuesday.....Last Day for Withdrawing from a Course
November 24-28, Thursday through Monday.....Thanksgiving Recess
December 5, Monday.....Registration for Second Semester
December 16, Friday, 6:00 P.M.....Christmas Recess Begins

1961

January 3, Tuesday, 8:00 A.M.....Christmas Recess Ends
January 24-27, Tuesday through Friday.....Final Examinations
January 29, Sunday, 3:00 P.M.....University Center Convocation

SECOND SEMESTER

January 31, Tuesday.....Registration for Entering Students
February 1, Wednesday, 8:00 A.M.....Classes Begin
February 8, Wednesday.....Last Day to Change Registration
March 14, Tuesday.....Charter Day
March (dates to be announced).....Thirkield-Jones Lectures
March 28, Tuesday.....Last Day for Withdrawing from a Course
March 31-April 3, Friday through Monday.....Easter Recess
May 9 - 12, Tuesday through Friday.....Senior Class Week
May 16 - 19, Tuesday through Friday.....Final Examinations
May 21, Sunday, 4:00 P.M.....Baccalaureate Service and
Commencement Program
5:00 P.M.....President's Reception

BOARD OF TRUSTEES INTERDENOMINATIONAL THEOLOGICAL CENTER

OFFICERS OF THE BOARD

- Dr. Ernest C. Colwell, Chairman
Bishop B. Julian Smith, Vice-Chairman
Bishop W. R. Wilkes, Secretary
Mr. Lorimer D. Milton, Treasurer
Dr. Benjamin E. Mays, Chairman, Executive Committee

TRUSTEES

- Bishop W. Y. Bell, The Christian Methodist Episcopal Church, South Boston, Va.
Bishop J. W. E. Bowen, The Methodist Church, Atlanta, Ga.
Dr. Aaron Brown, Phelps-Stokes Fund, New York City, N. Y.
The Rev. Archibald J. Carey, Jr., Quinn Chapel, Chicago, Ill.
The Rev. C. D. Coleman, Board of Christian Education, Christian Methodist Episcopal Church, Jackson, Tenn.
President Ernest C. Colwell, Southern California School of Theology, Claremont, Calif.
*Col. Willis M. Everett, Jr., Attorney, Atlanta, Ga.
Dr. Sherman L. Greene, Jr., Division of Education, African Methodist Episcopal Church, Nashville, Tenn.
The Rev. M. L. King, Sr., Ebenezer Baptist Church, Atlanta, Ga.
Mr. Lawrence J. MacGregor, Summit Trust Company, Summit, N. J.
Dr. R. W. Mance, Treasurer, African Methodist Episcopal Church, Washington, D. C.
President Benjamin E. Mays, Morehouse College, Atlanta, Ga.
Dr. Gerald O. McCulloh, Methodist Board of Education, Nashville, Tenn.
Mr. Lorimer D. Milton, Citizens Trust Company, Atlanta, Ga.
Dr. Frederick D. Patterson, Phelps-Stokes Fund, New York City, N. Y.
Bishop B. Julian Smith, Christian Methodist Episcopal Church, Chicago, Ill.
Dr. James S. Thomas, Methodist Board of Education, Nashville, Tenn.
Judge Elbert P. Tuttle, Fifth U. S. Circuit Court of Appeals, Atlanta, Ga.
President Henry P. Van Dusen, Union Theological Seminary, New York City, N. Y.
The Rev. Ronald V. Wells, Board of Education and Publication, American Baptist Convention, New York City, N. Y.
Bishop W. R. Wilkes, African Methodist Episcopal Church, Atlanta, Ga.

**Deceased*

EXECUTIVE COMMITTEE

Dr. Benjamin E. Mays, *Chairman*
Dr. Ernest C. Colwell
Dr. M. L. King, Sr.
Dr. Gerald O. McCulloh
President Harry V. Richardson
Bishop B. Julian Smith
Judge Elbert P. Tuttle
Bishop W. R. Wilkes

ADMINISTRATIVE STAFF

HARRY V. RICHARDSON, A.B., S.T.B., Ph.D., D.D. *President*
RALPH L. WILLIAMSON, B.S., S.T.B., M.S., Ph.D. *Administrative
Assistant to the President*
ELLIS H. RICHARDS, A.B., B.D., Ph.D. *Registrar*
H. EUGENE CRAIG, A.B., B.D., M.S. *Librarian*
MRS. EVAH OSTRANDER KINCHELOE *Associate Librarian*
MASTER J. WYNN, A.B., B.D., M.A. *Director
of Gammon Theological Seminary*
LEVI M. TERRILL, A.B., B.D., M.A. *Director of Morehouse
School of Religion*
MILNER L. DARNELL *Director of Phillips School of Theology
A.B., B.D., D.D.*
GEORGE A. SEWELL, A.B., S.T.B., S.T.M., Ph.D., LL.D. *Acting
Director of Turner School of Theology*
JOHN H. GRAHAM, A.B., B.D., M.A., D.D. *Director of Recruiting*
W. A. SHIELDS, B.S. *Bursar*
MRS. ELIZABETH ANN BRANTLEY *Secretary to the President*
MISS SARAH J. SHERRILL *Secretary to the Gammon Director*
MRS. AMANDA CARNES *Secretary to the Bursar*
MRS. SENONO E. SHIELDS, B.S. *Secretary to the Registrar and
to the Director of Recruiting*
MRS. MARY H. WILLIAMSON, B.S. *Director of Publicity*
EMMETT CARMICHAEL *Superintendent of Buildings and Grounds*

Mailing Address:

Interdenominational Theological Center
Box 6583, Station G
Atlanta 15, Georgia

THE FACULTY

- HARRY V. RICHARDSON.....*President and Professor of Practical Studies*
Western Reserve University, A.B.; Harvard University, S.T.B.;
Drew University, Ph.D.; Wilberforce University, D.D.
- LESTER R. BELLWOOD.....*Professor of New Testament*
State University of Iowa, B.A.; Iliff School of Theology, Th.M.,
Th.D.; University of Chicago, Harvard University, and Boston
University, Post-Doctoral Studies.
- THOMAS CARRUTH.....*Visiting Professor of Evangelism*
Millsaps College, A.B.; Drew University, B.D.; Asbury College,
D.D.
- GEORGE MURRAY BRANCH.....*Associate Professor of Old Testament*
Virginia Union University, B.S.; Andover-Newton Theological
School, B.D.; Drew University, A.M.; Hebrew Union College
and Drew University, Graduate Studies.
- JOSEPHUS R. COAN.....*Associate Professor of Religious*
Education and Missions
Howard University, A.B.; Yale University Divinity School, B.D.,
A.M.; Witzwatersrand, South Africa, Columbia University, Union
Theological Seminary and Hartford Theological Seminary, Grad-
uate Studies.
- CHARLES B. COPHER.....*Professor of Old Testament*
Clark College, A.B.; Gammon Theological Seminary, B.D.; Ober-
lin Graduate School of Theology, B.D.; Boston University, Ph.D.;
University of Chicago, Post-Doctoral Studies.
- RALPH A. FELTON.....*Visiting Professor of Rural Work*
Southwestern College, A.B.; Columbia University, M.A.; Union
Theological Seminary, B.D.; University of Pennsylvania, Gradu-
ate Study; Drew University, Ph.D.
- CARRIE L. GEORGE.....*Instructor in Religious Education*
Clark College, A.B.; Atlanta University, M.A.; Gammon The-
ological Seminary, B.D.; Ohio State University, Hartford Semi-
nary Foundation and New York University, Graduate Studies.
- JOHN H. GRAHAM.....*Associate Professor of Sociology of Religion*
Clark College, A.B.; Gammon Theological Seminary, B.D.; Drew
University, M.A.; Rust College, D.D.; Iliff School of Theology
and Boston University, Graduate Studies.
- ROGER S. GUPTILL.....*Associate Professor Emeritus of Missions*
Bates College, A.B.; Boston University, S.T.B.; Hartford Semi-
nary Foundation, M.A.
- HUGH M. JANSEN, JR.....*Associate Professor of Church History*
Yale University, B.A.; Episcopal Theological School, B.D.; Union
Theological Seminary, Graduate Study.

- JOSEPH A. JOHNSON, JR. *Professor of New Testament*
Texas College, B.A.; Iliff School of Theology, Th.M., Th.D.; The
Divinity School, Vanderbilt University, B.D., Ph.D.
- J. DE KOVEN KILLINGSWORTH *Instructor in Music*
American School of Music, B.M.E.; Chicago Conservatory of
Music, M.Mus.Ed.; Paul Quinn College, Mus.D.
- SAMUEL C. KINCHELOE *Professor of Sociology of Religion*
Drake University, A.B.; University of Chicago Divinity School,
M.A.; University of Chicago, Ph.D.; Pacific University, Litt.D.;
Chicago Theological Seminary, D.D.; Drake University, D.D.
- J. EDWARD LANTZ *Visiting Instructor in Speech*
DePauw University, A.B.; Yale University Divinity School, B.D.;
University of Michigan, M.A.; University of Chicago, Graduate
Studies.
- THOMAS J. PUGH *Professor of Psychology of Religion*
Clark College, A.B.; Gammon Theological Seminary, B.D.;
Atlanta University, M.A.; Drew University, Graduate Study;
Boston University, Ph.D.
- ELLIS H. RICHARDS *Professor of Theological Studies*
Syracuse University, A.B.; Drew University, B.D., Ph.D.
- WILLIAM V ROOSA *Professor of Church History*
Drake University, A.B.; University of Chicago, A.M., Ph.D.
- ALBERT A. THOMPSON *Professor of Homiletics*
Johnson C. Smith University, A.B., B.D.; Harvard University,
S.T.M., Ph.D., and Post-Doctoral Studies.
- MELVIN H. WATSON *Assistant Professor of Theology*
Morehouse College, A.B.; Oberlin College, M.A.; Oberlin Grad-
uate School of Theology, B.D., S.T.M.; Pacific School of Re-
ligion, Th.D.; University of Chicago and Union Theological
Seminary, Special Studies.
- RALPH L. WILLIAMSON *Professor of Town and Country Work*
Iowa State College, B.S.; Boston University, S.T.B.; Cornell
University, M.S.; Teachers' College, Columbia University, Special
Studies; Drew University, Ph.D.
- H. EUGENE CRAIG *Librarian*
Clark College, A.B.; Gammon Theological Seminary, B.D.; At-
lanta University, M.S.
- MRS. EVAH OSTRANDER KINCHELOE *Associate Librarian*
Eastern Michigan University, A.B.; University of Denver, B.S. in
Library Science; University of Chicago, M.A.
- U. Z. MCKINNON *Director of Extension Work*
Texas College, B.A.; Clark College, A.B.; Gammon Theological
Seminary, B.D.; Drew University, M.A.; Perkins School of Re-
ligion, Graduate Studies.

THE INTERDENOMINATIONAL THEOLOGICAL CENTER

The Interdenominational Theological Center is a new seminary created through the cooperation of four schools of theology, representing four different denominations. The respective schools are: Gammon Theological Seminary, Methodist; the Morehouse School of Religion, Baptist; Phillips School of Theology, Christian Methodist Episcopal; and Turner Theological Seminary, African Methodist Episcopal.

The new Center represents one of the most unique and elaborate projects in cooperative theological education ever undertaken in America. It was greatly helped by some magnificent grants from philanthropic foundations, especially from the Sealantic Fund and the General Education Board.

The new Center is under the direction of a 22 member Board of Trustees. Fifteen of these trustees come from the four participating schools. The remaining seven are members-at-large chosen without regard to denominational affiliation. The Trustees employ the faculty, set the policies and manage the physical and financial resources of the Center.

The Center was fully accredited by the American Association of Theological Schools at the bi-ennial meeting in Richmond, Va., in June 1960.

The I.T.C. is located on ten and a quarter acres of land in the heart of the Atlanta University area. The land is the generous gift of Atlanta University. In all there will be about twenty buildings in the physical plant, including the denominational dormitories which are being erected by each of the four schools. When complete the plant will be valued at nearly three million dollars.

The buildings and all other facilities will be of the most modern type. Great care is going into the planning of the Center to provide every modern resource for effective instruction and comfortable living.

The persons who make up the faculty of the Center have been chosen both for scholarly competence and for teaching

ability. They constitute an outstanding group among the seminaries of the nation. The Library of the Center contains nearly forty thousand volumes. Most of these volumes have been contributed by Gammon Seminary, along with the other schools. The Library has some outstanding collections, among them a collection on Negro history in Africa and America, and a distinguished collection of Bibles.

The Center's location in Atlanta offers many advantages. Atlanta is one of the principal transportation centers of America. It is directly accessible by train, plane and motor lines from all sections of the nation. Atlanta, too, has many peculiar advantages as a social laboratory. The Negro community of Atlanta is one of the most progressive in the nation with abundant commercial establishments, industries, and professional services. The churches of the city with their social service programs, the welfare agencies and penological institutions all provide a first rate laboratory for the student preparing for human service.

Atlanta is one of the world's greatest educational centers. There are six institutions of higher learning in the city which are federated into the Atlanta University System: Atlanta University, Clark College, The Interdenominational Theological Center, Morehouse College, Morris Brown College and Spelman College. The I.T.C. is an integral member of this federation and shares in the resources and opportunities afforded by these schools.

THE PARTICIPATING SEMINARIES

GAMMON THEOLOGICAL SEMINARY

HISTORICAL STATEMENT

Gammon Theological Seminary was founded in 1883 by the Methodist Episcopal Church. Bishop Gilbert Haven and the officers of the Freedmen's Aid Society had purchased nearly 500 acres of high land in the southern suburbs of Atlanta to which Clark University was moved in 1881.

A department of theology was established in Clark University in 1882 through the efforts of Bishop Henry White Warren, resident Bishop, and the gift of \$20,000 for endowment from the Rev. Elijah H. Gammon, a superannuated Methodist minister of the Rock River (Illinois) Conference. The enthusiasm and cooperation of these two men led to the erection of Gammon Hall which was dedicated on December 18, 1883. In June of that year the Rev. Wilbur Patterson Thirkield was elected Dean, and "Gammon School of Theology" was officially opened on October 3, 1883.

Within four years Mr. Gammon offered to give the school more liberal support on condition that it become independent of Clark University so that it might serve the entire Methodist Episcopal Church and all her colleges in the South. In April 1887 the official connections between Gammon and Clark were dissolved, and in January 1888 Mr. Gammon added \$200,000 to the endowment fund. The School was granted a charter on March 24, and the name was officially changed to its present name on December 28 of that year.

When Mr. Gammon died July 3, 1891, he had willed the Seminary sufficient additional funds to bring his total gift to more than half a million dollars. In his plans, he intended the Seminary to be a central theological school of the Methodist Episcopal Church for the entire South, open to students of all races and all denominations alike. The Seminary has always offered without distinction of race, to all students for the Christian ministry, a thorough, extensive, and well-arranged course of study.

From the very beginning the Seminary has played a vital part in the life and progress of Negroes in America. It has provided leaders of highest caliber who have served in varied capacities.

A recent survey shows that of the more than one thousand graduates of Gammon:

- 59 have served as professors in colleges
- 20 have become college presidents
- 116 have become district superintendents
- 24 have become church board secretaries
- 54 served as chaplains in World War II
- 10 have become editors of church papers
- 15 have become bishops, 9 in the Methodist Church, 6 in other denominations.

Hundreds have become ministers of wide influence, holding leading pulpits in all major denominations. One-fourth of the Conference members in the Central Jurisdiction of the Methodist Church are Gammon men.

Through its participation in the I.T.C. Gammon enters upon a new era of larger service to the Church.

THE MOREHOUSE SCHOOL OF RELIGION

HISTORICAL STATEMENT

Morehouse College in Atlanta is an institution for the education of men for constructive leadership and service. It was founded in 1867 by the American Baptist Home Mission Society of New York and was established in Augusta, Ga., as "The Augusta Institute". One of the purposes was the preparation of men for the ministry and the School of Religion of Morehouse College has carried out this responsibility through the years and continues to do so as a part of the new Interdenominational Theological Center.

It was in 1879 that "The Augusta Institute" was moved to Atlanta and became incorporated as "The Atlanta Baptist Seminary". It was housed in a three story building which it owned on a spot near the present Terminal Station. In 1890 the school was removed to its present location and in 1897 was renamed "The Atlanta Baptist College". In 1913 the

name "Morehouse College" was adopted in honor of Dr. Henry L. Morehouse, Corresponding Secretary of the American Baptist Home Mission Society and a constant friend and benefactor of the Negro race.

Among its notable early leaders were The Rev. Joseph T. Roberts, LL.D., who was president from 1871 to 1884; The Rev. Samuel Graves, D.D., President from 1885 to 1890; President George Sale, 1890 to 1906; and President John Hope, 1906 to 1931.

In 1931 President Hope resigned and was succeeded by Dr. Samuel Howard Archer, who had served the College as professor since 1903, and dean since 1920. On March 1, 1937, Dr. Charles D. Hubert, Director of the School of Religion, upon the recommendation of President Archer, was elected Acting President. President Archer, however, did not formally retire from the presidency until October 1, 1938, when he became President Emeritus. Dr. Hubert served as Acting President until July 1, 1940, when Dr. Benjamin Elijah Mays assumed the office of President. The Rev. Melvin H. Watson, Th.D., has served as Director of The School of Religion in recent years.

Atlanta Baptist Seminary was founded as an institution primarily for the training of ministers. From the year 1884 through 1923 certificates were granted to several hundred ministers. The first B.Th. degrees were offered in 1925 and discontinued in 1931; the B.D. program has been offered since 1926 to this date. The principal emphasis has been upon training men for the active pastorate.

THE PHILLIPS SCHOOL OF THEOLOGY

HISTORICAL STATEMENT

The importance the founding fathers attached to the education of men for the ministry of the Christian Methodist Episcopal Church may be seen in the following statement from the first Episcopal Message of the Bishops to the 1873

session of the General Conference of the C.M.E. Church: "Next to the maintenance of sound doctrine and godly discipline (and it will be tributary to these), the most vital point is the education of our people, and especially the improvement of our ministry."

In less than a decade after this message was delivered, Lane College at Jackson, Tennessee, and Paine College at Augusta, Georgia, were established with the training of ministers as their primary purpose. The study of the Bible and the preparation and delivery of sermons constituted a major part of the curriculum. In later years the work at Lane was organized into the Department of Theology and degrees issued therefrom.

In May of 1944, the Board of Trustees of Lane College passed a resolution in which it recommended the establishment of a separate seminary at Lane College. The recommendation was referred to the Annual Conferences concerned. In the fall of 1944 Lane College's supporting annual conferences approved the establishment of a seminary and elected trustees of the proposed institution.

The Seminary began operation under the name of Phillips School of Theology at Lane College with the winter quarter of 1944-45, offering the Bachelor of Divinity Degree on the graduate level and the Bachelor of Theology for undergraduate students. The 1946 General Conference of the C.M.E. Church gave the Seminary connectional status.

The Phillips School of Theology, and its antecedent, the Department of Theology at Lane College have given to the Christian ministry many educated and consecrated men and women. Many of them have been and are now serving in some of the outstanding pulpits and in other important positions in the C.M.E. Church and in our sister denominations.

PURPOSE OF PHILLIPS SCHOOL OF THEOLOGY

1. The school's primary purpose and task is that of train-

ing men and women for the Christian Ministry in the Christian Methodist Episcopal Church and other communions. The curriculum of the Phillips School of Theology is set up and organized to train the following kinds of religious leaders: pastors, directors of Christian education, youth directors, social service directors in church institutions, and teachers of religion.

2. To inspire, inform and prepare the Christian leader for those services which are his as a religious leader.

3. To help provide the Christian Methodist Episcopal Church with an adequate supply of able and dedicated leaders who will give a Christian interpretation to the whole of life in an ever-changing world.

Beginning with the 1959-60 school term, Phillips School of Theology has operated as one of the four seminaries constituting The Interdenominational Theological Center in Atlanta, Georgia. The academic work, chapel services, the library, the dining room, dormitories for married students and some other features of the Center are conducted by a central faculty and administration.

The diploma states that the degree is awarded by The Interdenominational Theological Center in cooperation with Phillips School of Theology and contains signatures of representatives of the new Center and the Phillips School of Theology.

Graduate professional degrees in addition to the B.D. degree will be given through the Center—such as the S.T.M., and M.R.E.

The degrees of Master of Arts and Doctor of Philosophy in the field of Religion will be given through Atlanta University.

Members of the Christian Methodist Episcopal Church desiring to enter Phillips School of Theology should apply to the Reverend M. L. Darnell, Director, Phillips School of

Theology, Atlanta, Georgia. He will process the application with The Interdenominational Center, and make provision for living quarters.

The College of Bishops and the General Board of Christian Education jointly administer a ministerial scholarship fund. The amount of the scholarships will vary according to the needs of the applicant. Applications for scholarships should be made to the General Board of Christian Education, 4043 South Drexel Boulevard, Chicago 15, Illinois.

TURNER THEOLOGICAL SEMINARY

HISTORICAL STATEMENT

The founders of Morris Brown College believed that to educate the people and leave the pulpit ignorant would be detrimental to the church and the race and therefore they proposed to have an educated ministry. As early as September 23, 1885, just before the doors of Morris Brown were opened for the reception of students, the Rev. T. G. Stewart, D.D., was elected Dean of Theology.

But it was not until 1894 that a Theological Department was formally opened with Dr. E. W. Lee as the dean. Twelve young men matriculated the first day and in three months twenty-four had enrolled. Among those who served as deans and professors during the next few years were: The Rev. J. S. Flipper, D.D., The Rev. W. G. Alexander, The Rev. M. M. Ponton, A.M., The Rev. J. D. Bibb, A.M., and the Rev. J. A. Brockett, D.D.

On June 19, 1900 the Executive Board, by unanimous vote, changed the name from the Theological Department of Morris Brown University to Turner Theological Seminary in honor of Bishop H. M. Turner who had been influential in the development of the school from the beginning. Others who have been deans since 1900 are: The Rev. P. W. Greatheart, D.D., in 1913, The Rev. J. A. Lindsay, D.D., in 1920, The Rev. W. G. Alexander again in 1922, The Rev. George

A. Singleton in 1928, The Rev. Samuel Hopkins Giles in 1929, and The Rev. Charles Leander Hill in 1933.

The Rev. Frank Cunningham was elected Dean in 1945 and served until 1954 when the Rev. Edward J. Odom, Jr., was elected. In 1957 The Rev. George A. Sewell, Ph.D. was elected Dean.

In the fall of 1957 Turner Theological Seminary moved into its own building apart from the College where it has maintained lecture rooms, conference rooms, offices, library and a student lounge.

Through the years Turner has been a major influence in providing a trained ministry for the African Methodist Episcopal Church and other denominations and in joining The Interdenominational Theological Center it continues and expands its tradition of ministerial service.

STATEMENT OF THE CENTER'S PURPOSE

The Interdenominational Theological Center seeks to prepare men and women for various fields of Christian service. While it places primary emphasis on the pulpit and pastoral ministry, the Center provides a foundation for ministries in the educational, missionary, institutional, social and related fields.

This preparation requires a knowledge of the Old and New Testaments, the history of the Church, the basic tenets of the Christian faith and the development of skills and effectiveness in preaching and in the practical aspects of Christian service.

The Center regards the development of the personal Christian life of each student as basic to the realization of this goal.

STUDENT LIFE AND ACTIVITIES

The Center affords abundant facilities for fine fellowship and pleasant living. Rooms are spacious and airy. Dormi-

tories are equipped with modern conveniences. The large campus permits outdoor recreation of many kinds.

Student life at the Center is largely under the direction of a student Christian society. This student organization will direct practically all of the extra-curricular activities at the Center. Through the society, the Center participates in The Inter-seminary Movement and other student Christian activities, and work to promote student welfare and progress.

CHAPEL SERVICES

Worship services are held regularly throughout the year. They provide for the cultivation of the devotional life of the students and also furnish opportunities for training in the conduct of public worship. The services bring many distinguished Christian leaders to the campus each year.

Administrative Regulations

FEES AND EXPENSES

Tuition and Fees

Tuition for the B.D., M.R.E., or S.T.M. degree.....	\$350.00 per year*
Tuition for less than twelve semester hours.....	12.00 per hour
Registration Fee	5.00
Library Fee	3.00
Student Activity Fee	10.00
Room Deposit (Refundable)	
Dormitory	15.00
Apartment or Cottage	25.00
Late Registration Fee.....	3.00
Maintaining Matriculation Fee	5.00
Graduation Fee: B.D., M.R.E., or S.T.M. degree....	15.00
Thesis Binding (two copies).....	10.00

Board

The charge for board is \$180.00 per semester.**

The dining hall is operated for the convenience of the students. It is expected that all students who live in the dormitory will take their meals in the dining hall.

The dining hall opens at noon on Thursday, September 15th, 1960 and will close with supper on Monday, May 22nd, 1961. It will be closed during the Christmas holidays and Easter recess.

Housing

MEN

The charges for a furnished room in the dormitory are:

Room for single occupant: \$67.50 per semester**

Room for two or more occupants: 45.00 per semester**

* See statement regarding Student Financial Aid.

** Semester payments for board and housing are due on registration day. However, arrangements may be made at the Business Office for monthly payments.

WOMEN

Information about furnished rooms for women students may be secured by writing to the President.

MARRIED STUDENTS

Housing facilities are available for married students for \$225.00 per semester.**

The cottages and apartments are completely furnished. Students must provide their own linen, dishes, and kitchen utensils. They must also pay their own gas and electric accounts.

Because of the heavy demand for living quarters for married students, applications should be made as far in advance as possible. Assignments will be made in the order in which Applications for Admission are approved.

STUDENT FINANCIAL AID

Financial aid in meeting the cost of tuition and other expenses at the Center will be provided for qualified students on the basis of need. Application should be made to the Director of the respective school or the President of the Center.

There are opportunities for work in the City of Atlanta through which a student may supplement his income if necessary. An earnest and industrious student should be able to defray his entire expenses without serious difficulty.

** Semester payments for board and housing are due on registration day. However, arrangements may be made at the Business Office for monthly payments.

Admission, Registration and Degree Programs

I. GENERAL TERMS OF ADMISSION

The Center is open on equal terms to qualified men and women of every Christian denomination. Persons seeking admission to the Center should apply to the Registrar for an official form of Application for Admission. Address: *The Registrar, The Interdenominational Theological Center, Atlanta 15, Georgia.*

Each applicant must submit the following credentials:

- A. Evidence of an A.B. or equivalent degree from a recognized college or university.
- B. An official transcript of all his college, university or seminary records showing all courses pursued, the grades received and the degree earned must be sent by the issuing institution directly to the Registrar.
- C. A certificate of good standing in a Christian church furnished by officials of that church should accompany the application. An applicant from The Methodist Church must present either a certificate of ordination for the ministry, a local preacher's license or a recommendation from the Board of Ministerial Training and Qualifications of his Annual Conference. Applicants from other denominations must present similar credentials from the proper officials of their respective churches.

II. REGISTRATION

The academic year includes two semesters of sixteen weeks each. Credit toward the Center's degrees may be earned in the Atlanta University Summer School of nine weeks.

The *unit of credit* is the semester hour. Twelve semester hours are the minimum and seventeen the maximum, without faculty permission, for the regular student. Faculty permission to carry more than 17 hours will be given to no student whose average for the preceding semester has been

below "B". Entering students will be limited to fifteen (15) semester hours until they have proven their ability to do satisfactory work.

Registration should be made on the day announced in the calendar. Registration after the first week of the semester may be made only by special permission of the faculty with the approval of each instructor concerned.

Changes in registration must be made with the Registrar within the first week of the semester and after the student has secured the approval of the Dean and the instructors concerned. *A course may not be entered* after the first week except by special permission of the faculty and with the approval of the Dean and the instructor concerned.

Registration in a course is usually *for credit*, but a student may register, with the consent of the instructor, as *an auditor*. Credit cannot be earned in a course unless the student has registered for credit in the regular way.

Withdrawal from a course within the first eight weeks of the semester with the approval of the Dean, the Registrar, and the instructor concerned shall be marked "Withdrawn," or "W." Withdrawal without the approval of the Dean, Registrar, and instructor shall be marked "Failure," or "WF".

Attendance at classes is required. Each instructor keeps a record of attendance and reports to the Registrar the total absences of each student with his grade at the end of the semester. Reasons for absences need not be reported and no excuses are granted.

Three tardinesses marked after the beginning of the class period will count as one absence. It is the student's responsibility to report tardiness to the instructor at the close of the class. A tardiness of fifteen minutes or more becomes an absence.

Absences are counted from the first session of a class. Thus a student who registers late will be charged with absences from the beginning of the class sessions.

If a student is absent from a given course twice the number of semester hours credit of that course (*e.g.*, four absences in a two-hour course), his grade for the course is reduced one full letter grade, (*e.g.*, "B" to "C").

This penalty may be avoided by the satisfactory completion of makeup work at the discretion of the instructor.

If a student's absences in a given course amount to three times the number of its semester hours credit, (*e.g.*, six absences in a two-hour course), his grade for the course is reduced one further letter grade. If his absences in a course amount to four times the number of credit hours, his enrollment in that course is automatically cancelled with no opportunity to make up work, and his grade is registered as "WF".

The instructor shall notify the student and the Registrar when a cancellation has occurred.

Regular attendance is expected of all students at chapel and all meetings of the Seminary.

GRADES

At the close of each semester, each instructor reports the grades of each student in his classes to the Registrar.

Grades are awarded as follows: A, Excellent, 90-100; B, Good, 80-99; C, Fair, 70-79; D, Poor, 60-69; E, Conditional Failure; F, Complete Failure; Inc., Incomplete; W, Withdrawn; WF, Withdrawn Failing. A plus (+) or minus (—) sign may be used to indicate a grade more accurately.

Quality points are reckoned as follows: A=3; B=2; C=1; D=0; E=0; F=minus 1.

Not more than 15 semester hours of the total 94 required for the B.D. degree or 10 semester hours of the 60 required for the M.R.E. degree may be of "D" grade. An "E" grade may be raised no higher than "D" by additional work assigned by the instructor in the course. An Inc. may be removed by special arrangement with the instructor concerned. Both the

“E” and the “Inc.” must be removed within the following semester, but the instructor may set an earlier date for the completion of the work due.

Any student whose cumulative average is below 1. or “C” is automatically placed on probation and his load limited to about twelve hours.

A student whose average for a given semester is below 1. or “C” may be placed on probation by the Curriculum Committee.

Strict probation may be imposed only by faculty action upon the recommendation of the Curriculum Committee and may not be continued beyond one semester.

CLASSIFICATION

JUNIORS: Candidates for either the B.D. or the M.R.E. degree who enter without conditions are classified as Juniors.

MIDDLERS: Candidates for the B.D. degree who have completed 28 semester hours with 28 quality points are classified as Middlers.

SENIORS: Candidates for the B.D. degree who have completed 58 semester hours with 58 quality points including all required first year courses are classified as Seniors. Candidates for the M.R.E. degree who have completed 30 semester hours with 30 quality points and are enrolled for their required second year's courses including the supervised field work are classified as Seniors.

A student's classification may change in mid-year. All classification lists must conform to the Registrar's records.

III. DEGREE PROGRAMS

The Center offers three degree programs as follows: the Bachelor of Divinity degree; the Master of Sacred Theology degree; and the Master of Religious Education degree.

A. BACHELOR OF DIVINITY DEGREE PROGRAM

1. Undergraduate Pre-Seminary Studies

Prospective students are urged to secure a well-rounded college education. The American Association of Theological Schools recommends that the student take 90 semester hours or approximately three-fourths of his college work in the following specific areas:

English—literature, composition, speech and related studies. At least 6 semesters.

History—ancient, modern European and American. At least 3 semesters.

Philosophy—orientation in history, content and method. At least 3 semesters.

Natural sciences—preferably physics, chemistry and biology. At least 2 semesters.

Social sciences—psychology, sociology, economics, political science and education. At least 6 semesters, including at least 1 semester of psychology.

Foreign languages—one or more of the following: Latin, Greek, Hebrew, German, French. At least 4 semesters.

Religion—a thorough knowledge of the content of the Bible is indispensable, together with an introduction to the major religious traditions and theological problems in the context of the principal aspects of human culture outlined above. The pre-seminary student may well seek counsel of the seminary of his choice in order most profitably to use the resources. At least 3 semesters.

Of the various possible areas of concentration, where areas of concentration are required, English, philosophy and history are regarded as the most desirable.

Applicants, even those from accredited colleges, found

seriously deficient in any of the above subjects may be required to make up such deficiencies in ways designated by the faculty. Courses taken to remove such deficiencies will carry no credit toward the semester hours required for graduation. *Proficiency in the use of the English language, both oral and written, must be demonstrated by each applicant upon admission to the Center.*

2. Terms of Admission

- a. Graduates of accredited liberal arts colleges, whose personal and academic credentials are satisfactory, usually are admitted without conditions.
- b. Graduates of non-accredited liberal arts colleges, or of accredited state institutions, such as teachers' colleges, and technical schools, will be considered on the merits of their personal and academic records. Those admitted will be placed *on probation* until all pre-seminary deficiencies have been made up and prescribed tests and examinations have been satisfactorily passed.
- c. Special Students
 - (1) Graduates of colleges or universities who do not plan to study toward a degree may, with the approval of the faculty, register for courses.
 - (2) An occasional college senior who lacks a few hours of completing his requirements for graduation may be admitted on the following conditions: if he is a classified senior in good standing with ninety-six (96) or more semester hours of credit and can present an official statement from his college dean certifying that plans have been approved for the completion of his degree before the beginning of the next academic year, he may be admitted to one or more of the Center's

courses which, together with his college work, shall not exceed the maximum load for Juniors.

All special students must present the same credentials as required of regular students. They are distinctly on trial and may be asked to withdraw at any time that their class attendance and assigned work is found to be unsatisfactory.

3. Requirements for the Bachelor of Divinity Degree

The minimum requirements for the Bachelor of Divinity degree are *ninety-four (94) semester hours* completed with a grade point average not lower than 1, or "C". Not more than fifteen (15) semester hours may be of "D" grade, i.e., without quality points. All requirements for the B.D. must be completed within five (5) years from the date of first registration. If work has not been completed within this period, a candidate may apply to the Faculty for re-admission.

If a student returns after an absence of more than two years, his requirements will be those current when he re-enters.

A student transferring from another accredited seminary must complete at least his last thirty (30) semester hours in residence at the Center.

The curriculum is organized on the Divisional Plan, and the minimum requirements are distributed as follows:

DIVISION I—Biblical Studies—20 hours

- A. Old Testament Studies 10 hrs.
- B. New Testament Studies 10 hrs.

DIVISION II—Historical Studies—16 hours

- A. Church History 10 hrs.
- B. Christian Missions and History of Religion 6 hrs.

DIVISION III—Theological Studies—10 hours

- A. Philosophy 4 hrs.
- B. Christian Theology 6 hrs.

DIVISION IV—Practical Studies—30 hours

A. Homiletics	7 hrs.
B. Parish Administration	6 hrs.
C. Pastoral Office	4 hrs.
D. Music and Worship	4 hrs.
E. Church and Society	4 hrs.
F. Religious Education	4 hrs.
G. Special Subjects	1 hr.
Total Required Courses	76 hrs.
Total Elective Courses	18 hrs.
TOTAL	94 hrs.

SCHEDULE OF REQUIRED COURSES

JUNIOR SCHEDULE

<i>First Semester</i>		<i>Second Semester</i>	
IA1J. Old Testament History and Literature	2	1A2J. Old Testament History and Literature	4
IB1J. New Testament History and Literature	4	1B2J. New Testament History and Literature	2
IIA1J. Survey of Church History	2	IIA2J. Survey of Church History	4
IIIA1J. Philosophy and Religion	2	IIIA2J. Philosophy and Religion	2
IVG1J. Graduate Study Methods	1	IVA2J. Public Speaking	2
Total	11	Total	14

MIDDLER SCHEDULE

<i>First Semester</i>		<i>Second Semester</i>	
IIB3M. History of Christian Missions	2	IIIB4M. Systematic Theology	2
IIIB3M. Systematic Theology	4	IVA4M. Making and Delivery of Sermons	2
IVA3M. Making and Delivery of Sermons	2	IVF2M. Introduction to Religious Education	4
IVE3M. Sociology of Religion	4	IVD2M. Worship	2
IVB11M. Field Work	1	IVB12M. Field Work	1
Total	13	Total	11

SENIOR SCHEDULE

IVB1R. Church Administration	2	Counselling	4
IVB13R. Studies in Ministerial Leadership	2	IVD1R. Hymnology	2
IVC3R. Pastoral Work and		Total	10

SPECIAL REQUIREMENTS

Special Sermon Practicum. Every candidate for the Bachelor of Divinity degree is required to prepare and deliver an acceptable sermon under the supervision of the professor of homiletics.

Each student of a denomination participating in the Theological Center will be required to take a course or courses in the history and polity of his denomination.

Methodist Students should note the requirement of the *Discipline* (1956, Par. 344) of two semester hours each in Methodist history, polity and doctrine. Courses IIA11, *History of Methodism*, IVB4, *The Discipline of the Methodist Church*, and IIB7, *Theology of John Wesley*, are designed to meet this requirement and should be included in the schedule of all students seeking admission to an Annual Conference of The Methodist Church.

Special Requirements of Seniors: (1) All required first year courses should be completed before the beginning of the student's senior year; (2) all outstanding "conditions" (such as grades—"E" and "Inc.") must be removed before the Christmas vacation of his senior year; (3) all "conditions" from his first semester of his senior year must be removed before March 1. Failure to comply with these requirements automatically removes the student's name from the list of candidates to be recommended by the faculty to the Board of Trustees for graduation at the forthcoming Commencement.

B. MASTER OF SACRED THEOLOGY DEGREE PROGRAM

Terms of Admission

The Theological Center offers the Master of Sacred Theology degree in the fields of Biblical Studies; Historical Studies; and, Church and Society. Candidacy for this degree is open to persons holding the Bachelor of Divinity degree

or its equivalent from a recognized graduate theological seminary. All students are admitted first as unclassified graduate students. After completing 12 semester hours of graduate work, they may be admitted to candidacy.

An applicant must have maintained an average grade of "B" (80-89) or above for his B.D. course in order to be admitted without conditions. An applicant whose seminary record does not show this average, but has other qualifications, may be admitted "on strict probation" for one semester.

Requirements for the Master of Sacred Theology Degree

1. A minimum of 30 semester hours, with an average of "B" or better beyond the Bachelor of Divinity degree, or its equivalent (and not used for another degree) is required. At least 24 hours of this work must be done in residence. Additional hours may be required to complete the student's preparation for the writing of the thesis.

2. A minimum of eighteen (18) semester hours with no grade below "B" must be earned in his major field.

3. A minimum of 12 semester hours must be earned in other departments. Courses taken must be above the introductory level, and selected in consultation with each particular instructor.

4. At the beginning of the graduate course a program of study worked out by the student in consultation with his advisor must be approved by the Graduate Studies Committee.

5. Facility in the use of ancient or modern languages making source material available to the student may be required by the major instructor as a prerequisite, depending upon the field involved. Language examinations will be administered once a semester. Application to take these examinations must be made to the Graduate Committee at least ten days in advance of the date of the examination.

6. An acceptable thesis is required for the degree. The subject must be chosen in consultation with the adviser and approved by the Graduate Committee.

7. The thesis must be approved by the major adviser and a second reader.

8. Oral examination—Each candidate shall present himself for an oral examination, in which he must defend his thesis.

9. The requirements for the degree must be completed within five (5) years from the date of admission into candidacy. At the end of five (5) years, application may be made to the faculty for re-admission.

10. After the student has been admitted to candidacy, he must maintain his matriculation by paying annually the registration fee required by the Center, until the degree is awarded.

11. Two unbound copies of the thesis must be deposited with the Registrar before the degree is awarded.

12. A maximum of six (6) semester hours, with 12 or more quality points, may be credited by transfer from another seminary or university.

13. Students entering the graduate program from an unaccredited theological seminary, or with a grade point average of less than "B", are required to take a minimum of six semester hours in addition to the 30 hours required for graduation.

14. Students applying for the S.T.M. degree must take the tests required of all entering students at I.T.C. The Graduate Record Examination may be required also.

15. A student may audit courses while pursuing his degree.

16. Not more than six semester hours may be earned in directed study or reading courses arranged by the major adviser.

17. The subject of the thesis must be approved by November 15 for a degree to be awarded at the following Commencement. The first draft must be submitted to the major adviser by February 15. Two typewritten copies of the final draft must be filed with the Registrar by April 1 in order for a degree to be awarded for that year.

18. Two hours may be earned in supervised field work and/or clinical training.

C. MASTER OF RELIGIOUS EDUCATION PROGRAM

1. Purpose of the Program

The purpose of the program is to provide training for Christian service for the following groups:

- a. Those who might enter full-time church work in other fields but who need religious education as supplementary to other training. This group would include social workers of various kinds, not necessarily under church auspices.
- b. Those who wish to prepare for one of the following types of positions: educational assistants in a local church; certified directors of Christian education in local churches, districts or conferences; religious social workers in Community Centers, the Y.M.C.A. or Y.W.C.A., Boy Scouts, Girl Scouts, or Campfire Girls; or teachers of the Bible, religious education and related subjects in schools and colleges.

2. Terms of Admission

All persons seeking candidacy for the M.R.E. degree must meet the requirements for admission to the B.D. program as outlined in paragraphs A and B on page 22 and submit a certificate of Christian character and good standing in some Christian church, and of fitness or adaptability for work in the Christian church. This certificate must be signed by a

pastor or other responsible person who has known the applicant well.

3. Requirements for the Degree

All requirements must be completed within five (5) years from date of registration. If a student returns after an absence of more than 2 years, the requirements will be those current when he re-enters.

Candidates for the degree must complete sixty (60) semester hours of post-collegiate work with a grade point average not lower than 1. or "C". Not more than 10 hours may be "D" grade.

FIRST YEAR—Semester I

	<i>Hours Credit</i>
Old Testament History and Literature.....	2
Program Building for Children.....	2
Philosophy and Religion.....	2
Survey of Church History.....	2
Psychology of Religion.....	2
Field Work and Supervision.....	1
Electives (In IV F).....	4

15

Semester II

Old Testament History and Literature.....	4
Program Building for Adolescents and Adults.....	4
Philosophy and Religion.....	2
Survey of Church History.....	4
Worship in the Church School.....	2
Field Work and Supervision.....	1

17

SECOND YEAR—Semester I

New Testament History and Literature.....	4
History of Christian Missions.....	2

The Church and Human Relations	2
Hymnology	2
Field Work and Supervision	1
Leadership Training	4
	<hr/>
	15
Semester II	
New Testament History and Literature	2
Curriculum	2
Field Work and Supervision	1
Electives (In IV F)	8
	<hr/>
	13

NOTE: If necessary, substitutions in these courses may be arranged in consultation with the instructor in Religious Education and the Dean of Instruction.

4. Field Work and Supervision

As a part of the academic requirements for the M.R.E. degree, each candidate must pursue a field work project for two academic years. The project is chosen in consultation with the supervising professor. A report of the work experience is written up as the work progresses. Two copies of this report must be in the hands of the supervising professor by April 10 of the senior year. One copy will be filed in the Center's Library.

5. Relation of the M.R.E. and B.D. Programs

A minimum of 30 semester hours of work in religious education and psychology and related fields, plus examinations, may meet the requirements for the Master of Religious Education degree following completion of the Bachelor of Divinity degree program. Similarly, a minimum of 60 semester hours of course work, plus examinations, may meet the requirements for the Bachelor of Divinity degree following the completion of the Master of Religious Education degree program.

The Course of Study

1960-1961

The curriculum is organized around fields of study as indicated in the following Divisions:

- I. Division of Biblical Studies
- II. Division of Historical Studies
- III. Division of Theological Studies
- IV. Division of Practical Studies

NOTES: The letters J, M, R, used with the course numbers indicate courses which are *required* for JUNIORS, MIDLERS and SENIORS, respectively.

Courses may be changed without previous notice. In the case of exceptional students a few courses may be offered as directed study or guided research projects.

Courses marked with an asterisk (*) may be taken for credit in either department for which listed.

DIVISION I. BIBLICAL STUDIES

A. Old Testament Studies

Professors Branch and Copher

1.2J OLD TESTAMENT HISTORY AND LITERATURE

A course in the history and literature of the Hebrews from earliest times through the Old Testament period, based upon biblical and extra-biblical sources. During the first part of the course attention is given to the origin and transmission of the biblical text, archaeology, geography and early general history of the Near East; during the second, emphasis is placed upon the literature and the historical situations out of which it grew. (Required of Juniors)

First Semester 2 hours; Second Semester 4 hours
Branch or Copher

.4 RELIGION AND THEOLOGY OF THE OLD TESTAMENT

A study of the origins and development of religion in the Old Testament. Consideration is given to the religion of the Patriarchs, Moses, and the Prophets, followed by a study of exilic and post-exilic religious developments. (Offered 1960-61 and every third year).

Copher Second Semester 4 hours

5. PROPHETS

A general introduction to the prophetic movement and literature of the Old Testament.

Copher First Semester 4 hours

.6 THE BOOK OF THE TWELVE PROPHETS

A study of the various briefer prophetic writings with reference to their historical context and religious values. (Offered in 1961-62 and alternate years)

Branch Second Semester 4 hours

7. ISAIAH, JEREMIAH AND EZEKIEL

An historical and critical study of the major prophetic books for their influence on Hebrew life and thought and their relevance for today. (Offered in 1961-62 and alternate years)

Branch First Semester 4 hours

- .8 PSALMS
 An intensive study of the book of *Psalms*, with attention given to development, organization and content. Interpretation of individual psalms is presented in the light of life situations. (Offered in 1960-61 and alternate years).
Copher Second Semester 2 hours
9. POETRY AND WISDOM LITERATURE
 A study of the characteristics of Hebrew poetry, and of the books of *Job*, *Proverbs*, *Ecclesiastes*, *Lamentations* and the *Song of Songs*. Major emphasis is placed upon the book of *Job*. (Offered in 1961-62 and every third year).
Copher First Semester 4 hours
11. BIBLICAL HERMENEUTICS*
 A study of the science and art of biblical interpretation. Attention is given to historical schools of interpretation and to both general and special principles.
Copher First Semester 4 hours
- .12 BIBLICAL GEOGRAPHY*
 A study of the geography of the biblical world according to the expanding geographical horizons indicated in the Scriptures. (Offered in 1960-61 and every third year).
Copher Second Semester 2 hours
13. PERSONALITIES OF THE OLD TESTAMENT
 A Seminar in which students are assigned or are permitted to choose particular Old Testament characters for intensive study. (Offered in 1960-61 and alternate years).
Branch First Semester 2 hours
- .14 SEMINAR: HEBREW SOCIAL LIFE
 A study of selected customs, mores, practices, and institutions of Hebrew life with a view to enhancing the understanding and appreciation of the Hebraic heritage. Each member of the class will do research on assigned topics upon which he will report to the class. (Offered in 1961-62 and every third year.)
Branch Second Semester 2 hours
- 21.22 ELEMENTS OF BIBLICAL HEBREW
 A study of Hebrew grammar and vocabulary, with transla-

tion of selected passages. (Credit given only when course is pursued for a full year)

Branch First Semester 4 hours; Second Semester 2 hours

23.24 HEBREW SEMINAR

Exegesis of selected passages.

Branch First and Second Semesters 2 hours

IB.17 HELLENISTIC BACKGROUND*

(See description under Department of New Testament)

IB.18 APOCALYPTIC LITERATURE*

(See description under Department of New Testament)

B. New Testament Studies

Professors Bellwood and Johnson

1.2J NEW TESTAMENT HISTORY AND LITERATURE

A course dealing with the history, method and results of New Testament critical study. (Prerequisite to all N.T. courses)

First Semester 4 hours; Second Semester 2 hours

Bellwood-Johnson

3. LIFE AND TEACHINGS OF JESUS

A study of the life, ministry and message of Jesus as presented in the Gospels, and an examination of the miracles, parables and other discourse materials to determine what they teach concerning the basic matters of the Christian faith. Included will be an evaluation of the significance of this material for Jesus' day and for ours.

Bellwood-Johnson

First Semester 4 hours

.4 LIFE AND TEACHINGS OF PAUL

A study of the life and teachings of Paul, including his doctrine of cosmic redemption; his doctrine of man and of personal salvation; his concept of sin and death; his opinion of ethical and social behavior, including the motivations and sanctions for ethical conduct; his thought concerning faith,

hope, love, baptism, separatism and holiness. Attention will also be given to Paul's Jewish and Gentile heritage.

Bellwood-Johnson Second Semester 4 hours

5. THE SYNOPTIC GOSPELS

A critical examination of selected units of the Synoptic Gospels and related materials in the Fourth Gospel, seeking to understand the theology of each of the Gospels; the teachings of Jesus; and, the textual details in comparing Mark's Gospel with the other two Synoptic Gospels. (Offered in 1960-61 and every three years).

Bellwood-Johnson First Semester 2 hours

7. NEW TESTAMENT EXEGESIS: GOSPEL OF JOHN

A careful study of the style, purpose, and thought of the Fourth Gospel in comparison with the Synoptics, with special emphasis on the message of the Gospel of John. (Offered in 1961-1962 and alternate years)

Bellwood-Johnson First Semester 2 hours

.8 DEUTERO-PAULINE LETTERS ----

An exegetical study of Colossians, Ephesians, and the Pastorals based on the English text. (Offered in 1960-1961 and alternate years).

Johnson Second Semester 2 hours

.10 NEW TESTAMENT THEOLOGY

The meaning and significance of the early Christian proclamation as developed, interpreted, and modified by the major contributors to the thought of the New Testament. An examination of the present status of the subject by a careful study of Bultmann, Dodd, Taylor and Richardson. (Offered in 1961-1962 and alternate years).

Johnson Second Semester 2 hours

11.12 THE FAITH OF PAUL

A study of Paul's theology through exegesis of the English text of his epistles of I and II Corinthians and Philippians will be pursued the first semester. The second semester will include an English exegesis of Romans, Galatians, and I Thessalonians, with particular emphasis given to his interpretation

of the following basic concepts: Faith, Grace, Law, Sin, Righteousness, and Eschatology. (Offered in 1960-61 and every third year).

Johnson First Semester 2 hours; Second Semester 2 hours

.14 THE CHRISTOLOGY OF THE NEW TESTAMENT

A comprehensive study of the Christological concepts of the New Testament, seeking to determine the meaning and significance of the person and work of Jesus Christ for the emerging Christian Community. (Offered in 1960-1961 and alternate years).

Johnson Second Semester 2 hours

17. HELLENISTIC BACKGROUND OF THE NEW TESTAMENT*

Hellenism, both Pagan and Jewish, in the Inter-Testamental and New Testament periods as an environmental factor in the spread and modification of Christianity. The Mystery Religions, Gnosticism, popular philosophy, and Hellenistic-Jewish missionary techniques will be considered. (Offered in 1961-1962 and alternate years).

Bellwood First Semester 2 hours

.18 APOCALYPTIC LITERATURE*

A study of the nature of apocalypse, and the apocalyptic sections of the Old Testament (*Joel, Zechariah 9-14, Isaiah 24-27, and Daniel*) and the New Testament (*Revelation of John, Mark 13*). These sources will be contrasted with non-canonical and pagan apocalypses in an effort to discover their original significance and relevance for today. (Offered in 1961-1962 and alternate years).

Bellwood Second Semester 2 hours

19. SEMINAR: APOSTOLIC FATHERS

A study of the Apostolic Age and the beginning of the Christian Church, based upon Acts and other early Christian sources. (Offered in 1962-1963 and every third year).

Bellwood-Johnson First Semester 2 hours

.20 INTRODUCTION TO TEXTUAL CRITICISM

Emphasis will be given to the principles and methods of Textual Criticism of the Greek New Testament. It will include

a history of the New Testament manuscripts as well as a history of the canon. Textual theories and recent developments of textual criticism will also be considered. Some attention will be given to collation of important manuscripts. (Offered in 1961-1962).

Bellwood Second Semester 2 hours

21. SEMINAR: TEXTUAL CRITICISM

Research in the Western, Neutral, and Caesarean Texts. The course will include an investigation of the Gospel texts of Eusebius, Athanasius, Origen, and Cyril of Alexandria. A critical evaluation of the results of recent textual studies will also be pursued. (Offered in 1962-1963 and every third year).

Bellwood First Semester 2 hours

23.24 NEW TESTAMENT GREEK

An introductory study of the Greek of the New Testament through syntax, vocabulary and Greek-English, English-Greek translations. The second semester will be a continuation of the first semester. Selected passages in the Greek New Testament will be read for purposes of illustrating principles of Greek grammar. (The first semester only is open to students who have had no training in Greek.)

First Semester 4 hours; Second Semester 4 hours
Bellwood-Johnson

25. ADVANCED NEW TESTAMENT GREEK

Reading and exegesis of books of the New Testament based on the Greek text. (Offered in 1961-1962 and alternate years).

Bellwood-Johnson First Semester 4 hours

27. SEMINAR: GOSPEL OF MARK

Exegesis of the Greek text of Mark's gospel, and an examination of its background, structure, and purpose together with an evaluation of its relation to the other Synoptic Gospels and its place in the development of Christian thought. (Offered in 1962-63 and alternate years).

Johnson First Semester 2 hours

IA11. BIBLICAL HERMENEUTICS*

(See description under Department of Old Testament).

IA.12 BIBLICAL GEOGRAPHY*

(See description under Department of Old Testament).

DIVISION II. HISTORICAL STUDIES

A. Church History

Professors Jansen, Roosa

- 1.2J GENERAL SURVEY OF CHURCH HISTORY
An introduction to Christian history from its beginning to the present. The first semester will cover the period to 500 A.D.; the second semester to the present. (Required of Juniors)
Roosa-Jansen First Semester 2 hrs.; Second Semester 4 hrs.
- .4 SEMINAR: EARLY CHRISTIANITY AND ROMAN SOCIETY
The relation of Christianity to basic aspects and institutions of Roman life. Why and how Christianity changed from an other-worldly movement, hostile to the Roman Empire, to a position of dominance as the official religion of the state. (Offered in 1961-62 and alternate years).
Roosa Second Semester 4 hours
9. HISTORY OF CHRISTIAN THOUGHT
A general survey of Christian thought from the first Apologists to the Reformation, with emphasis upon the development of doctrine. (Offered in 1960-61 and alternate years).
Jansen First Semester 4 hours
- .10 THE PROTESTANT REFORMATION
The life and work of the Reformers and the formation of the Lutheran, Calvinist and Anglican churches. (Offered in 1960-61 and alternate years).
Jansen Second Semester 2 hours
11. DENOMINATIONAL HISTORY
The students of each of the four participating denominations in the I.T.C. are expected to take a course in the history of their respective churches. These denominations are:
a. African Methodist Episcopal
b. Baptist
c. Christian Methodist Episcopal
d. Methodist (Required for membership in an Annual Conference of The Methodist Church.)
First Semester 2 hours

- .14 EARLY CHRISTIAN LIFE AND LITERATURE
 Practical aspects of Christian life, faith and worship in the early centuries; and select writings of Apologists and Church Fathers that provided inspiration and guidance for their people. Extensive use of source materials. (Offered in 1961-62 and alternate years).
Roosa Second Semester 4 hours
- .16 SEMINAR: ENVIRONMENT OF EARLY CHRISTIANITY
 A study of the chief religions and philosophies which were rivals of early Christianity: their basic characteristics and emphases; their relation to and significance for Christianity, and why Christianity triumphed. (Offered in 1960-61 and alternate years).
Roosa Second Semester 4 hours
- .18 RESEARCH IN EARLY CHRISTIANITY
 Intensive study of selected problems in the Early Church. (Offered in 1961-62 and alternate years).
Roosa Second Semester 2 hours
19. HISTORY OF CHRISTIANITY IN AMERICA
 A study of the development of American Christianity from the colonial period to the present.
Jansen First Semester 4 hours
- .20 HISTORY OF THE NEGRO CHURCH
 A study of the rise and growth of Christianity among the Negroes from colonial times to the present. (Not offered in 1960-61).
 Second Semester 2 hours
21. THE ECUMENICAL MOVEMENT
 A study of the modern Ecumenical Movement. (Offered in 1961-62 and alternate years)
Jansen First Semester 2 hours
- .22 SEMINAR: AMERICAN CHRISTIANITY AND THE FRONTIER
 The westward expansion of the Church in the nineteenth century, with special emphasis upon the influence of the frontier on American Christianity. (Offered in 1961-62 and alternate years).
Jansen Second Semester 2 hours

23. SEMINAR: LEADERS OF AMERICAN CHRISTIANITY
 A biographical approach to American Christianity through its prominent leaders. (Offered in 1961-62 and alternate years).
Jansen Second Semester 2 hours
- .24 HISTORY OF AMERICAN CHRISTIAN SOCIAL THOUGHT
 The major trends of Christian social thought in America from the seventeenth century to the present. (Offered in 1960-61 and alternate years).
Jansen Second Semester 2 hours
- .26 SEMINAR: NEWER RELIGIOUS MOVEMENTS IN AMERICA
 A study of the origin and growth of some American religious groups to be selected by the members of the Seminar. (Offered in 1961-62 and alternate years).
Jansen Second Semester 2 hours
- IVC.10 DEVELOPMENT OF THE CURE OF SOULS*
 See description, under Pastoral Office. (Offered in 1961-62 and alternate years).

B. Christian Missions and History of Religions

Professors Coan and Roosa

1. WORLD RELIGIONS
 A survey of the chief living religions: their origins, history, teachings, significance for Christianity and the modern world.
Roosa First Semester 4 hours
- 3.M HISTORY OF CHRISTIAN MISSIONS
 A rapid survey of the Christian missionary enterprise from its inception to the present time; a panoramic view of the world Christian community; and a consideration of the missionary obligation of the Christian Church. (Required of Middlers).
Coan First Semester 2 hours
- .4 PRINCIPLES AND PRACTICES OF MISSIONS
 A systematic study of the principles and practices of Christian missions with reference to the Biblical foundations, the development of the Church and accumulated missionary experiences. (Offered in 1960-61 and alternate years).
Coan First Semester 2 hours

5. MISSIONARY BIOGRAPHY

A study of the personalities who have been the makers of mission work around the world. (Offered in 1961-62 and alternate years).

Coan Second Semester 2 hours

.6 MISSIONARY EDUCATION IN THE LOCAL CHURCH

Materials, principles and methods for a comprehensive missionary program in the local church. (Offered in 1961-62 and alternate years).

Coan Second Semester 2 hours

.10 WORLD CHRISTIANITY

A survey of contemporary church life in the principal countries of the world with a study of the present efforts at Protestant ecumenicity. (Offered in 1960-61 and alternate years).

Coan Second Semester 2 hours

.12 CHRISTIANITY AT WORK IN AFRICA

A survey of the missionary work carried on in Africa by the churches and by independent missions in order to discover their effectiveness. (Offered in 1961-62 and alternate years).

Coan Second Semester 2 hours

.14 SEMINAR: MISSIONARY PROBLEMS AND OPPORTUNITIES

Designed especially for those who may choose Africa as a field of labor. A study of the present political situation and the resultant problems the missionary must face. Also a consideration of the opportunities offered. (Offered in 1960-61 and alternate years).

Coan Second Semester 2 hours

DIVISION III. THEOLOGICAL STUDIES

A. Philosophy

Professors Richards and Watson

1.2J PHILOSOPHY AND RELIGION

As an orientation in the study of Christian theology, the

fields and methods of theology are set in the background of a brief survey of philosophy. Basic problems of life and thought are raised and important answers reviewed. Special consideration is given to the relationship of philosophy to theology. (Required of Juniors) .

Richards First and Second Semesters 2 hours

3. SOCIAL ETHICS

A study of ethics as applied to specific social relations and issues in contemporary society.

Watson First Semester 4 hours

.4 PRINCIPLES OF CHRISTIAN ETHICS

The principles of Christian ethics are studied by means of a critical review of various forms of moral philosophy and the development of the evangelical basis for Christian attitudes and behavior. (Offered in 1961-62 and alternate years).

Richards Second Semester 4 hours

5. SEMINAR: PHILOSOPHY OF RELIGION

Special topics for advanced study form the content of this course. Opportunity is provided for individual research. (Offered in 1960-61 and alternate years).

Watson First Semester 2 hours

B. Christian Theology

Professors Richards, Watson

IIA9. HISTORY OF CHRISTIAN THOUGHT*

(See description under Historical Studies).

Jansen First Semester 4 hours

.2 BIBLICAL THEOLOGY

By a doctrinal review of the Old and New Testaments the content, criteria and methods of biblical theology are discussed. This approach emphasizes the primacy of revelation and response and is distinguished from a philosophical approach to Christian theology. (Offered in 1960-61 and alternate years).

Richards Second Semester 4 hours

3.4M SYSTEMATIC THEOLOGY

All the important doctrines of Christianity are studied in

an effort toward the clearest possible understanding of the Christian faith. (Required of Middlers)

Watson First Semester 4 hours; Second Semester 2 hours

5. CHRISTOLOGY

The central doctrine of the incarnation and the person of Jesus Christ is treated in some detail. (Offered in 1960-61 and alternate years).

Richards First Semester 2 hours

.6 SIN AND SALVATION

An examination of the Christian doctrine of redemption; the nature of man, sin, divine sovereignty and grace; the personal character of repentance and forgiveness, justification and reconciliation. (Offered in 1960-61 and alternate years).

Watson Second Semester 2 hours

7. THEOLOGY OF JOHN WESLEY

The distinctive doctrines of Wesleyan theology are considered in their historical setting and their present significance. (Required for membership in an annual conference of the Methodist Church.) (Offered in 1961-62 and alternate years).

Richards First Semester 2 hours

.8 THEOLOGY OF THE REFORMATION

The distinctive doctrines of Protestantism are studied from the writings of the Reformers and with regard for their relevance for today. (Offered in 1961-62 and alternate years).

Watson Second Semester 2 hours

9. SEMINAR: THEOLOGY

Special topics for advanced study form the content of this course. Opportunity is provided for individual research. (Offered in 1960-61 and alternate years).

First Semester 2 hours

.10 CONTEMPORARY THEOLOGY

Modern movements and trends in theology are reviewed with special attention to developments in the ecumenical field. (Offered in 1960-61 and alternate years).

Richards Second Semester 4 hours

.12 THEOLOGY AND THE MINISTRY

The practical bearing of theology on the Christian ministry is considered with reference to preaching, evangelism, teaching, administration and pastoral care. (Offered in 1961-62 and alternate years).

Richards

Second Semester 2 hours

DIVISION IV. PRACTICAL STUDIES

A. Homiletics

Professors Lantz, Thompson

.2J PUBLIC SPEAKING

A study of the principles of public speaking together with opportunities to develop speaking skills. Fundamentals of effective communication will be stressed. Speeches and addresses on topics related to the minister's work will be assigned. A recording of each student's voice will be made. (Required of Juniors. Alternate Junior requirement with IVA8.)

Lantz

Second Semester 2 hours

3.4M THE MAKING AND DELIVERY OF SERMONS

The emphasis of this course will be upon preaching. The first semester will deal with basic purposes of preaching and the preparation of a sermon. The second semester will afford opportunities for the making and delivery of complete sermons. Various types of homilies will be assigned. The instructor and members of the class will evaluate their effectiveness. (Required of Middlers)

Thompson

First and Second Semesters 2 hours

5.6R SERMON PRACTICUM

The course deals with the Senior Sermon. Given in two sections—one each semester—with one hour's credit.

Thompson

First and Second Semesters 1 hour

7. ORAL AND DRAMATIC INTERPRETATION OF SCRIPTURE

A study of the principles of oral interpretation as they apply to reading the Scriptures aloud. Stress will be placed upon understanding the Bible, selecting appropriate passages, getting ready to read, and presenting the reading itself. Special types of religious literature will also be considered.

Lantz

First Semester 2 hours

- .8 SPEAKING AND GROUP LEADERSHIP
 A study of various aspects of speaking in the church and of relating them to group leadership. Fundamentals of both good speaking and effective leadership will be considered, including the art of presiding at meetings and a judicious use of parliamentary procedure.
Lantz Second Semester 2 hours
- .10 THE USE OF LITERATURE IN PREACHING
 A study of various types of literature a preacher can use to help him in his preaching.
Lantz Second Semester 2 hours
11. HISTORY OF CHRISTIAN PREACHING
 Great sermons throughout the ages will be analyzed and appraised.
Thompson First Semester 2 hours
13. USE OF RADIO AND TELEVISION
 An introduction to the techniques of using radio and television facilities for religious broadcasting. To be given at the Protestant Radio and Television Center by the E. Stanley Jones Institute of Communicative Arts.
 First Semester 2 hours
- .14 ADVANCED RADIO METHODS
 An advanced course concentrating on practice in the use of radio for religious purposes. Given at the E. Stanley Jones Institute.
 Second Semester 2 hours
- .16 ADVANCED TELEVISION METHODS
 An advanced course concentrating on practice in the use of television for religious programs. Given at the E. Stanley Jones Institute.
 Second Semester 2 hours.
17. GRADUATE STUDY METHODS
 This course is designed to help entering students become oriented to the methods of graduate study. Topics stressed will include the development of efficient study habits, proper use of the library, preparation of term papers, and considera-

tion of English usage suitable for ministerial leadership, including improvement in grammar, punctuation, vocabulary and pronunciation. (Required of Juniors)

Lantz First Semester 1 hour

.18 GRADUATE STUDY SEMINAR

This course is a continuation of GRADUATE STUDY METHODS. It will be conducted in seminar fashion by having reports and discussions on advanced phases of communicative skills and disciplines. Each student will be expected to select an appropriate project and pursue it during the course. This project may be the writing of some discourse designed for publication.

Lantz Second Semester 2 hours

B. Parish Administration

Professors Carruth, Graham, Richardson, Williamson

1.R CHURCH ADMINISTRATION

The art and science of planning and administering the program of the local church with special attention given to democratic procedures, the use of group dynamics in the development of Christian lay leadership, and the spiritual values involved in church administration. (Required of Seniors)

Williamson First Semester 2 hours

.4 THE DISCIPLINE OF THE METHODIST CHURCH

This course is based on a study of the Methodist *Discipline* which is required for membership in an annual conference of The Methodist Church. The course, IIA11, HISTORY OF METHODISM, is recommended as a prerequisite. (Offered in 1960-61 and alternate years)

Graham Second Semester 2 hours

.6 CHURCH POLITY

This course will be taught in denominational sections by various members of the faculty who represent their denominations. The sections are:

- a. African Methodist Episcopal
- b. Baptist
- c. Christian Methodist Episcopal
- d. Other Denominations

Second Semester 2 hours

.8 INTERDENOMINATIONAL PROGRAMS

A study of methods and programs of councils of churches, ministerial alliances and associations, larger parishes and group ministries. (Offered in 1960-61 and alternate years)

Williamson Second Semester 2 hours

.10 EVANGELISM

Modern methods of reaching the unchurched will be stressed in a workshop course with opportunities for field experience. (Offered in 1960-61 and alternate years)

Carruth Second Semester 2 hours

11.12M SUPERVISED FIELD WORK

This course in field work is conducted under the supervision of the Department of Practical Studies. Students will be assigned field work responsibility. For B.D. Students.

(Required of Middlers. Laboratory fee, \$3.00. Not offered in 1960-61)

First and Second Semesters 1 hour

13.R STUDIES IN MINISTERIAL LEADERSHIP

The course deals with techniques of leadership for ministers. Attention is given to such subjects as the elements of effective leadership and methods of self-analysis and self-improvement for leaders. The course also offers training in conducting group discussions and demonstrations, and in counseling as a leadership device. (Required of Seniors)

Richardson First Semester 2 hours

15.16 FIELD WORK

Supervised field work and/or clinical training for S.T.M. candidates.

Williamson First or Second Semester 2 hours

.18 PRAYER AND EVANGELISM

An emphasis on a local church program of evangelism and the prayer life movement.

Carruth Second Semester 2 hours

.22 SEMINAR: PARISH ADMINISTRATION

Advanced study of selected problems in Parish Administration. Required of candidates for the S.T.M. degree in the

Division of Practical Studies. Seniors may register for the course with the consent of the instructor.

Williamson

Second Semester 2 hours

C. Pastoral Office

Professors Bellwood, Pugh

1. PSYCHOLOGY OF RELIGION

A psychological approach to understanding the religious life. It will consider belief and conduct, growth and conversion, personality and community, individual and corporate worship, preaching and prayer, and conscience and vocation. Laboratory groups will be formed for explorations in religion.

Pugh

First Semester 3 hours

3.R PASTORAL PSYCHOLOGY AND COUNSELING

A course in the theory and meaning of the pastoral care of individuals and groups. Functions such as pastoral calling and personal and family counseling in crisis and illness will be studied. Laboratory groups will be formed for a practical examination of basic counseling theories which have relevance for religious leaders. Each student will conduct a number of interviews which will be evaluated. (Required for Seniors)

Pugh-Bellwood

First Semester 4 hours

5.6 CLINICAL ORIENTATION IN PASTORAL CARE**

This course includes supervised experiences in local hospitals where opportunities are provided for applying pastoral care principles to persons undergoing physical or mental crises. (Enrollment limited to six students per semester)

Pugh

First and Second Semesters 2 hours

7. SEMINAR IN GROUP DYNAMICS

A seminar in which participants learn the distinctive qualities of the group leader, member and observer. This will include techniques of studying groups and of developing group leadership. Multiple leadership and the dynamics of interpersonal relationships within the group will also be con-

** Clinical pastoral training is offered in many hospitals for six to twelve weeks each summer. Every student is urged to take a twelve week session before his senior year.

sidered. (Registration must be approved by the instructor. Enrollment limited to twelve students).

Pugh First Semester 2 hours

.8 PERSONALITY AND RELIGION

A dialectical consideration of the psychodynamics of personality as related to religion. Special attention will be given to a consideration of how personality is formed in interpersonal relationships.

Pugh Second Semester 2 hours

.10 DEVELOPMENT OF THE CURE OF SOULS*

A study of the history of pastoral care which will help pastors meet needs of people through larger understanding. Offered in 1961-62 and alternate years)

Pugh Second Semester 2 hours

.12 MEASUREMENT IN RELIGION

A course which will give guidance in choosing and developing measuring devices for the study of religious experience and human behavior. It will utilize statistical methods in organizing and interpreting data. Each student will participate as subject, administrator and interpreter of findings. (Offered in 1960-61 and alternate years)

Pugh Second Semester 2 hours

.14 USE OF THE BIBLE IN PASTORAL CARE

This course is designed to enable the pastor to make more effective use of the Bible in his pastoral work. Biblical material will be studied with emphasis upon its relationship to the personality needs of people in specific individual and group situations. (Offered 1960-61 and alternate years)

Bellwood Second Semester 2 hours

D. Music and Worship

Professors Killingsworth, Thompson

1.R HYMNOLOGY

A study of hymns and hymn writers from Charles Wesley down to the present day; twentieth century hymnody, relation of music and worship, and program building.

Killingsworth First Semester 2 hours

.2M WORSHIP

A study of the nature, technique and conduct of public worship, with emphasis on the preparation and administration of services for various occasions.

Thompson Second Semester 2 hours

IVF.12 WORSHIP IN THE CHURCH SCHOOL*

(See description under Religious Education)

E. Church and Society

Professors Graham, Kincheloe, Richardson, Williamson

3.M SOCIOLOGY OF RELIGION

A course designed to show the development of religion as a social institution, its relation to other aspects of the culture, its function as a conservative and as a dynamic factor in social control. (Required of Middlers)

Graham First Semester 4 hours

.4 CHURCH AND COMMUNITY

An introduction to types of urban and rural communities, their problems and the roles of the churches. Field trips, visual aids and visiting lecturers will be used.

Williamson Second Semester 2 hours

5. THE CHURCH AND HUMAN RELATIONS

In this course a critical study is made of contemporary social problems and of the part the church can play in their solution. Especial attention will be given to the race problem in America, and to the minister's role.

Richardson First Semester 2 hours

7.8 CHURCH AND COMMUNITY ANALYSIS

a. Urban *Graham*

b. Town and Country *Williamson*

An application of the methods of social research to specific church and community problems. Either semester may be taken for credit. Registration must be approved by the instructors. (Laboratory fee, \$3.00)

First and Second Semesters 2 hours

9. THE TOWN AND COUNTRY CHURCH

A study of the philosophy, nature and methods of church

work in town and country communities under 10,000 population.

Williamson First Semester 2 hours

.10 URBAN CHURCH

A survey course which embraces the impact of urbanism upon Protestantism, urban trends, types of urban churches, basic problems, church and urban renewal, and strategies for the urban church.

Graham Second Semester 2 hours

11. SOCIAL RECONSTRUCTION

A study of proposals for the improvement of human welfare such as cooperatives, labor unions, industrial and rural development programs, civil rights, birth limitation, war prevention, and FAO technical aid and health programs. (Offered in 1960-61 and alternate years)

Williamson First Semester 2 hours

.12 SOCIAL WELFARE

A study of social welfare needs, programs, and methods of public and private agencies with special reference to the Church's responsibility. (Offered in 1961-62 and alternate years)

Williamson Second Semester 2 hours

13. MARRIAGE AND THE FAMILY

A study of the family as the basic social unit, its changing functions, problems of marital adjustment, parent-child relationships, divorce, family organization and disorganization, and counseling with reference to the Church's responsibility. Wives of students may audit the course free of cost. (Offered in 1961-62 and alternate years)

Williamson First Semester 2 hours

.14 SEMINAR: SOCIOLOGY OF RELIGION

An advanced study of selected topics and scholarly works in the field of Sociology of Religion. Required of candidates for S.T.M. degree in the Division of Practiced Studies. Seniors may register for the course with the consent of the instructor.

Williamson Second Semester 2 hours

- 15.16 DIRECTED STUDY IN TOWN AND COUNTRY CHURCH
 Study and research on problems in town and country church work which are of special interest to the student.
Williamson First or Second Semester 2 to 4 hours
- .18 HISTORY OF THE SOCIAL GOSPEL MOVEMENT
 A study of the development of social consciousness among Protestant clergymen in America from 1865-1915. Present day applications are made concerning the data discussed. (Offered in 1961-62 and alternate years)
Williamson Second Semester 2 hours
21. SEMINAR: METHODS OF SOCIAL RESEARCH
 The theory and practice of social research as it relates to the work of the churches and community agencies. Required for the S.T.M. degree in the Division of Practical Studies; others may register by permission of the instructor.
Williamson First Semester 2 hours
- III A3. SOCIAL ETHICS
 (See description under Philosophy)
Watson First Semester 4 hours

F. Religious Education

Professors Coan, George

IVF 2M INTRODUCTION TO RELIGIOUS EDUCATION

This is an orientation course in the educational task of the church. It seeks, in the first place, to bridge the gap between theological content and educational method; secondly, to interpret the essential roles of the pastor and the director in the teaching ministry of the church. Consideration will be given to the Biblical foundations of Christian education and their theological implications for educational methodology. Brief introductions will be given to general objectives, organization, administration, materials and methods.

(Required for Middlers)

Coan Second Semester 4 hours

.4 CURRICULUM OF RELIGIOUS EDUCATION

This course will include the history of the curriculum, the theory of curriculum making, sources and kinds of teaching

materials, standards of evaluation, and practice in curriculum making.

Second Semester 2 hours

5. THE USE OF THE BIBLE IN RELIGIOUS EDUCATION

An analysis of Biblical materials with special reference to their use in the curriculum for meeting the needs, interests and capacities of various age groups.

First Semester 2 hours

.6 RELIGION IN HIGHER EDUCATION

This course will cover the following subjects: the function of religion in higher education, the relation of the Church to higher education in the United States, Christian understanding of the university, and work with students as a Christian ministry.

Second Semester 2 hours

7. PROGRAM BUILDING FOR CHILDREN

This course is designed for directors, teachers, missionaries and ministers who direct their own religious education program. A study is made of materials, equipment and educational procedures of religious development of children from the nursery through the junior age level. (Required of M.R.E. candidates)

First Semester 2 hours

.8 PROGRAM BUILDING FOR ADOLESCENTS AND ADULTS

The discussion centers around specific areas of life and needs of youth and adults and the educational procedures for meeting these needs. Provision is made for concentration upon specific fields of interest such as college, rural, city and foreign work with youth and adults. (Required of M.R.E. candidates)

Second Semester 4 hours

9. LEADERSHIP TRAINING IN RELIGIOUS EDUCATION

This course aims to prepare students to become accredited instructors in the church's leadership training program and to supervise the development of religious education workers on the job.

First Semester 4 hours

.10 DRAMA

This course introduces students to the history of the drama and to some of the great plays. Plays are evaluated and a classified list for use in the church is prepared by the class. Attention is given to the technique of play production and to choral speech. Stress is placed upon the educational use of drama. The class produces one play.

Second Semester 2 hours

11. AUDIO-VISUAL MATERIALS

Methods of using educational motion pictures, slides, film strips and recordings will be presented, demonstrated and discussed. Opportunity will be given for operating equipment. Methods will relate to age groups and areas of use in religious education.

First Semester 2 hours

.12 WORSHIP IN THE CHURCH SCHOOL

This course will include a study of the nature, purpose and psychological aspects of worship for children and youth. Students will be given experience in building and conducting special worship services for a graded church school.

Second Semester 2 hours

13. STORY TELLING

This course acquaints the student with the general field of children's literature and develops skill in selecting and telling stories for age groups and for specific occasions. The student has actual practice in telling stories and builds a file of resources for all age groups in the program of the church.

First Semester 2 hours

.14 CAMPING AND LEISURE TIME

The course considers the place of leisure time activities in the church or church agency in attempting to meet community needs. Leisure time experiences are studied in relation to the program of religious education for children, youth and adults during the entire year. Camping under church direction is given special emphasis.

Second Semester 2 hours

15.16 FIELD WORK AND SUPERVISION

Field work provides an opportunity for important Christian service and the occasion for the student to develop skill while rendering that service. The academic training is made practical in field work activities. This work is pursued in churches or social agencies such as the YWCA and orphanages, according to the interest of the student. Each student has weekly conferences with the supervising professor for purposes of guided study. (Required of M.R.E. candidates)

First and Second Semesters 1 or 2 hours

17.18 FIELD WORK AND SUPERVISION

A continuation of IVF15.16. (Required of M.R.E. candidates)

First and Second Semesters 1 or 2 hours

THE STUDENT REGISTER 1959 - 1960

Candidates for the S.T.M. Degree

- *BACKSTROM, HENRY HARDY Atlanta, Georgia
A.B., Clark College, 1943
B.D., Gammon Theological Seminary, 1945
- *UPTON, MILTON LEON New Orleans, La.
A.B., Knoxville College, 1950
B. D., Gammon Theological Seminary, 1956

Unclassified Graduate Students

- MOSS, OTIS Atlanta, Georgia
A.B., Morehouse College, 1956
B.D., Morehouse School of Religion, 1959
- WILLIAMS, WILLIAM MARCUS Atlanta, Georgia
A.B., Morehouse College, 1952
B.D., Morehouse School of Religion, 1956

Candidates for the B.D. Degree

Seniors

- BENNETT, MARION DANIEL Taylors, South Carolina
A.B., Morris Brown College, 1957
- CAMPBELL, JAMES FRANKLIN High Point, North Carolina
A.B., Shaw University, 1958
- CLERK, OSBERN BENNIE Newnan, Georgia
A.B., Clark College, 1957
- DAVIS, ABRAHAM ERIC Alexandria, Louisiana
A.B., Southern University, 1958
- DAVIS, EDSSEL MANUEL Montevallo, Alabama
A.B., Selma University, 1956
- GIBSON, RAYMOND THIRKIELD Greenville, South Carolina
A.B., Claflin University, 1953
- HAMILTON, JOHN DONASIER V. New Orleans, Louisiana
A.B., Dillard University, 1957
- HICKS, GRANVILLE AIKEN Walhalla, South Carolina
A.B., Claflin University, 1957
- HINTON, EDWARD GALAHAD LaGrange, Georgia
A.B., Clark College, 1957

* Maintaining matriculation only

JACKSON, MOSES THOMAS	Opelousas, Louisiana
A.B., Wiley College, 1957	
JERALD, ANDREW	Birmingham, Alabama
A.B., Morehouse College, 1957	
JOHNSON, CHARLIE JAMES	Dalton, Georgia
A.B., Morehouse College, 1956	
JOHNSON, NED HOWARD	Wheeling, West Virginia
A.B., Clark College, 1957	
JONES, JAMES ARTHUR	Atlanta, Georgia
A.B., Morris Brown College, 1957	
JONES, SAMUEL PRESTON, JR.	Little Rock, Arkansas
A.B., Arkansas Agricultural and Mechanical College, 1950	
MILLER, RAY EVERETT	Conowingo, Maryland
A.B., Morgan State College, 1957	
MOULTON, JOHN LAWRENCE	Eutaw, Alabama
A.B., Knoxville College, 1948	
MULLINS, ISAAC LOVELL	Chattanooga, Tennessee
A.B., Morehouse College, 1957	
NORWOOD, ELISHA	Atlanta, Georgia
B.S., Bethune-Cookman College, 1950	
**ROBERTS, SAMUEL ALDEN	Gary, Indiana
B.S., Knoxville College, 1954	
SHARP, HAROLD NATHANUAL	Atlanta, Georgia
A.B., Clark College, 1957	
SPEARS, JOE LOUIS	Clover, South Carolina
A.B., Clark College, 1957	
TAYLOR, THERMAN	Kendleton, Texas
B.S., Prairie View College, 1957	
WASHINGTON, WILLIAM HENRY	Miami, Florida
A.B., Florida Agricultural and Mechanical University, 1957	
WHITLEY, CLIFTON REIVE	Aberdeen, Mississippi
A.B., Rust College, 1957	
WILSON, RUFUS II	Atlanta, Georgia
B.S., Clark College, 1952	

Middlers

ALEXANDER, JOHN M. JR.	Orangeburg, South Carolina
B.S., Claflin University, 1958	
BICKERS, BENJAMIN WELDON	Atlanta, Georgia
A.B., Morris Brown College, 1951	

**Completed work first semester.

- DAVIE, EDWARD ROBERT..... Atlanta, Georgia
 A.B., Morehouse College, 1958
 DUDLEY, CRAYTON THOMAS..... Atlanta, Georgia
 A.B., Clark College, 1950
 EPPS, JOHN FREDERICK..... Kingstree, South Carolina
 A.B., Morris Brown, 1958
 GATHERS, GEORGE ENOCH..... New York, New York
 A.B., Oakwood College, 1957
 GOODEN, DEFARRIS..... Madisonville, Texas
 A.B., Wiley College, 1958
 GOODWIN, WILLIS TIMOTHY..... Charleston, South Carolina
 A.B., Claflin University, 1958
 HOPE, JULIUS C..... Plateau, Alabama
 B.S., Alabama State College, 1958
 KING, WILLARD MAURICE..... Starkville, Mississippi
 B.S., Rust College, 1958
 MILLER, LAWRENCE ALLEN..... Mobile, Alabama
 B.S., Alabama State College, 1958
 NAGBE, STEPHEN TROWEN..... Monrovia, Liberia
 B.A.Th., Cuttington College
 NESMITH, SAMUEL EVANS..... Winston-Salem, North Carolina
 A.B., Claflin University, 1958
 PEARSON, JOHN CARSON..... Bishopville, South Carolina
 A.B., Claflin University, 1959
 SMITH, BENJAMIN..... LaGrange, Georgia
 B.S., Alabama State College, 1958
 TALBERT, MELVIN GEORGE..... Clinton, Louisiana
 A.B., Southern University, 1959
 WASHINGTON, WATT T..... Birmingham, Alabama
 B.S., Alabama A&M College, 1955
 WATTS, JOHN EDWARD..... Talladega, Alabama
 B.S., Alabama State College, 1958
 WIGGINS, WILLIAM HAWTHORNE JR..... Louisville, Kentucky
 A.B., Ohio Wesleyan University, 1956
 WILBORN, JAMES ADAM..... Atlanta, Georgia
 A.B., Morehouse College, 1959

Juniors

- ALEXANDER, CAMERON MADISON..... Atlanta, Georgia
 A.B., Morehouse College, 1959
 APPLEBERRY, CLIFTON EXPOSE..... Tylertown, Mississippi
 A.B., Rust College, 1959

- BOOZER, BENJAMIN BABBITT..... Columbia, South Carolina
A.B., Allen University, 1952
- BUTLER, GRADY..... Greenville, South Carolina
B.S., Tuskegee Institute, 1959
- CALLIER, SAMUEL HENRY..... Bryan, Texas
A.B., Wiley College, 1959
- CAREY, ABRAHAM RICHARD..... Snow Hill, Maryland
A.B., Clark College, 1959
- COLTER, JAMES SAMUEL..... Chattanooga, Tennessee
A.B., Claflin College, 1952
- CONOWAY, MERLIN DEAN..... Amory, Mississippi
B.S., Rust College, 1957
- CRUMP, WILLIE BERNARD..... Amory, Mississippi
B.S., Tuskegee Institute, 1960
- CURRY, JOHN WESLEY, JR..... Florence, South Carolina
A.B., Clark College, 1959
- DEAN, GENE ROBERT..... Hogansville, Georgia
A.B., Paine College, 1959
- DOUGLAS, JESSE LEE..... New Orleans, Louisiana
A.B., Lane College, 1959
- FELDER, ROBERT E. JONES..... Galveston, Texas
A.B., Clark College, 1959
- GEORGE, ULRIC..... San Fernando, Trinidad, B.W.I.
A.B., Morris Brown College, 1959
- GORHAM, DAVID LIVINGSTON..... Atlanta, Georgia
A.B., Paine College, 1947
- GRIGGS, ANDREW LEE W..... Forrest City, Arkansas
A.B., A&M College, Pine Bluff, 1959
- HAYES, ROBERT JR..... Chesterfield, South Carolina
B.S., Claflin College, 1950
- HUTCHINS, JOSHUA..... Huntingtown, Maryland
B.S., St. Paul's College, 1959
- HUTCHINSON, CHARLES LESLEY..... Attalla, Alabama
B.S., A&T College, Greensboro, 1958
- JACKSON, VERDELLE ELDRIDGE..... Cleveland, Mississippi
B.S., Mississippi Vocational College, 1957
- JACOBS, DANIEL WESLEY..... Fort Valley, Georgia
A.B., Morris Brown College, 1955
- JENKINS, CALVIN BROCKINGTON..... Chattanooga, Tennessee
A.B., Claflin College, 1952
M.A., Columbia University, 1957
- JONES, LEE JEROME..... Decatur, Georgia
B.S., Fort Valley State College, 1953

KING, ALFRED DANIEL.....Atlanta, Georgia
 A.B., Morehouse College, 1960

LIEDY, HUBERT BLAINE.....Houston, Texas
 A.B., Texas College, 1952
 M.Ed., Texas Southern University, 1956

MCKENNEY, MARTIN LUTHER.....Baltimore, Maryland
 A.B., Morgan College, 1959

MCPHERSON, THOMAS JR.....Augusta, Georgia
 A.B., Morris Brown College, 1959

MANIGO, GEORGE FRANKLIN JR.....Bamberg, South Carolina
 B.S., Claflin University, 1959

MARTIN, LAWRENCE RAYMOND.....Archie, Louisiana
 B.S., Grambling College, 1959

MAYS, WILLIE.....Grambling, Louisiana
 B.S., Grambling College, 1959

MOODY, JOE NATHAN.....McLain, Mississippi
 A.B., Rust College, 1959

PEYTON, CHARLES HENRY JR.....Marshall, Texas
 A.B., Wiley College, 1959

PLEASURE, MOSE JR.....Brunswick, Georgia
 A.B., Dillard University, 1954
 M.A., Harvard University, 1955

PRATT, THOMAS ALEXANDER.....Huntsville, Alabama
 B.S., Alabama A&M College, 1957

ROBINSON, EDESEL FORD.....Savannah, Georgia
 A.B., Morris Brown College, 1959

SIMMONS, DIMPSON WAYCROSS.....McMinnville, Tennessee
 A.B., Lane College, 1959

SMITH, WILLIAM TAYLOR.....Memphis, Tennessee
 A.B., Lane College, 1959

SUMPTER, NATHANIEL F.....Quincy, Florida
 B.S., Florida Normal, 1950

SWEETING, STAFFORD JAMES.....Miami, Florida
 A.B., St. Augustine's College, 1959

TURNER, HERBERT MAURICE.....Trenton, New Jersey
 B.S., Trenton State College, 1955

WADE, ROBBIE L.....Luling, Texas
 A.B., Houston-Tillotson College, 1959

WALKER, RICHARD JR.....Birmingham, Alabama
 B.S., Tuskegee Institute, 1949

WILKERSON, CLAYTON DUKE.....Atlanta, Georgia
 A.B., Morris Brown College, 1959

WILLIAMS, JESTER CLAIBORNE.....Chicago, Illinois
 B.S., Alcorn A&M College, 1950

Candidates for M.R.E. Degree

First Year

MAYS, QUEEN ELIZABETH..... Grambling, Louisiana
 B.S., Grambling College, 1959

Second Year

NAGBE, MELVENA MORRIS..... Monrovia, Liberia
 B.S., Cuttington College, 1957

Special Students

HODGES, RUTH HALL..... Atlanta, Georgia
 A.B., Clark College
 B.R.E., Gammon Theological Seminary
 M.R.E., Gammon Theological Seminary

SUMMARY 1959 - 1960

STUDENT ENROLLMENT

A.	Graduate Students (S.T.M.).....	4
	First Semester.....	4
	Second Semester.....	2
B.	B.D. degree candidates.....	90
	Seniors	25
	Middlers	21
	Juniors	44
C.	M.R.E. degree candidates.....	2
	First year	1
	Second year	1
D.	Special Student.....	1
	Total enrollment.....	97

COLLEGE DISTRIBUTION OF STUDENTS

A&T College, Greensboro	1
Alabama A&M College	2
Alabama State College	4
Alcorn College	1
Allen University	1
Arkansas A&M College	2
Bethune-Cookman College	1
Clafin University	10

Clark College	12
Cuttington College, Monrovia, Liberia	2
Dillard University	2
Florida A&M University	1
Florida N&I Institute	1
Fort Valley State College	1
Grambling College	3
Houston-Tillotson College	1
Knoxville College	3
Lane College	3
Mississippi Vocational College	1
Morehouse College	9
Morgan State College	2
Morris Brown College	9
Oakwood College	1
Ohio Wesleyan University	1
Paine College	2
Prairie View College	1
Rust College	5
Saint Augustine's College	1
Saint Paul's College	1
Selma University	1
Shaw University	1
Southern University	2
Texas College	1
Trenton State College	1
Tuskegee Institute	3
Wiley College	4

97

GEOGRAPHICAL DISTRIBUTION OF STUDENTS

Alabama	9
Arkansas	2
British West Indies	1
Florida	3
Georgia	27
Illinois	1
Indiana	1
Kentucky	1
Louisiana	9
Maryland	4
Mississippi	7
Monrovia, Liberia	2

New Jersey	1
New York	1
North Carolina	2
South Carolina	13
Tennessee	5
Texas	7
West Virginia	1

97

DENOMINATIONAL DISTRIBUTION OF STUDENTS

African Methodist Episcopal	8
African Methodist Episcopal Zion	2
African Orthodox	1
Baptist	23
Christian Methodist Episcopal	10
Congregational	1
Episcopalian	1
Methodist	50
Seventh Day Adventist	1

97

ENROLLMENT DISTRIBUTION OF STUDENTS

Turner Theological Seminary	4
Morehouse School of Religion	10
Phillips School of Theology	10
Gammon Theological Seminary	73

97

CLASS OF 1960

MASTER OF RELIGIOUS EDUCATION

MELVENA MORRIS NAGBE

B.S., Cuttington College, Monrovia, Liberia, 1957

BACHELOR OF DIVINITY

MARION DANIEL BENNETT
A.B., Morris Brown College,
1957

JAMES FRANKLIN CAMPBELL
A.B., Shaw University, 1958

ABRAHAM ERIC DAVIS
A.B., Southern University, 1958

EDSEL MANUEL DAVIS
A.B., Selma University, 1956

RAYMOND THIRKIELD GIBSON
A.B., Claflin College, 1953

JOHN DONASIER V. HAMILTON
A.B., Dillard University, 1957

GRANVILLE AIKEN HICKS
A.B., Claflin College, 1957

MOSES THOMAS JACKSON
A.B., Wiley, 1957

ANDREW JERALD
A.B., Morehouse College, 1957

CHARLIE JAMES JOHNSON
A.B., Morehouse College, 1956

NED HOWARD JOHNSON
A.B., Clark College, 1957

JAMES ARTHUR JONES
A.B., Morris Brown College,
1957

SAMUEL PRESTON JONES, JR.
A.B., Arkansas A&M, 1950

RAY EVERETT MILLER
A.B., Morgan State College,
1957

JOHN LAWRENCE MOULTON
A.B., Knoxville College, 1948

ISAAC LOVELL MULLINS
A.B., Morehouse College, 1957

*SAMUEL ALDEN ROBERTS
A.B., Knoxville College, 1954

HAROLD NATHANUAL SHARP
A.B., Clark College, 1957

JOE LOUIS SPEARS
A.B., Clark, 1957

THERMAN TAYLOR
B.S., Prairie View College, 1957

WILLIAM HENRY WASHINGTON
A.B., Florida A&M Univ., 1957

RUFUS WILSON II
B.S., Clark College, 1952

*Work completed first semester 1959-1960.

CLASS OF 1960

MASTER OF RELIGIOUS EDUCATION

U.S. Catholic College, Montevideo, Idaho, 1957

BACHELOR OF DIVINITY

- | | |
|---------------------------|---------------------------|
| James Arthur Jones | James Arthur Jones |
| A.B. Montevideo College | A.B. Montevideo College |
| 1957 | 1957 |
| Edward Patton Jones Jr. | James Francis Conner |
| A.B. Montana State | A.B. St. Lawrence |
| 1959 | 1959 |
| Ray Everett Miller | James Paul Jones |
| A.B. Oregon State College | A.B. Southern University |
| 1957 | 1958 |
| John Lawrence Morrison | Robert Meyer Davis |
| A.B. Gonzaga College | A.B. St. Lawrence |
| 1958 | 1958 |
| David Louis Miller | Raymond Thomas Green |
| A.B. Montana College | A.B. Ohio College |
| 1957 | 1957 |
| Ernest Allen Roberts | John Lawrence V. Harrison |
| A.B. Montana College | A.B. Dakota Wesleyan |
| 1954 | 1957 |
| Harold Mitchell Roberts | Granville Allen Hicks |
| A.B. Ohio College | A.B. Ohio College |
| 1957 | 1957 |
| John Lawrence Roberts | John Lawrence Roberts |
| A.B. Ohio College | A.B. Ohio College |
| 1957 | 1957 |
| Thomas Larson | Andrew Mason |
| A.B. Ohio College | A.B. Ohio College |
| 1957 | 1957 |
| Walter Henry Westerman | Charles James Jones |
| A.B. Ohio College | A.B. Montana College |
| 1957 | 1958 |
| James West II | John Lawrence Roberts |
| A.B. Ohio College | A.B. Ohio College |
| 1957 | 1957 |

*Not completed by August 1958-1960



AN M.R.E. STUDENT ON A FIELD WORK ASSIGNMENT

