

BULLETIN OF THE

# Interdenominational Theological Center



*Cooperating Seminaries*

GAMMON THEOLOGICAL SEMINARY

MOREHOUSE SCHOOL OF RELIGION

PHILLIPS SCHOOL OF THEOLOGY

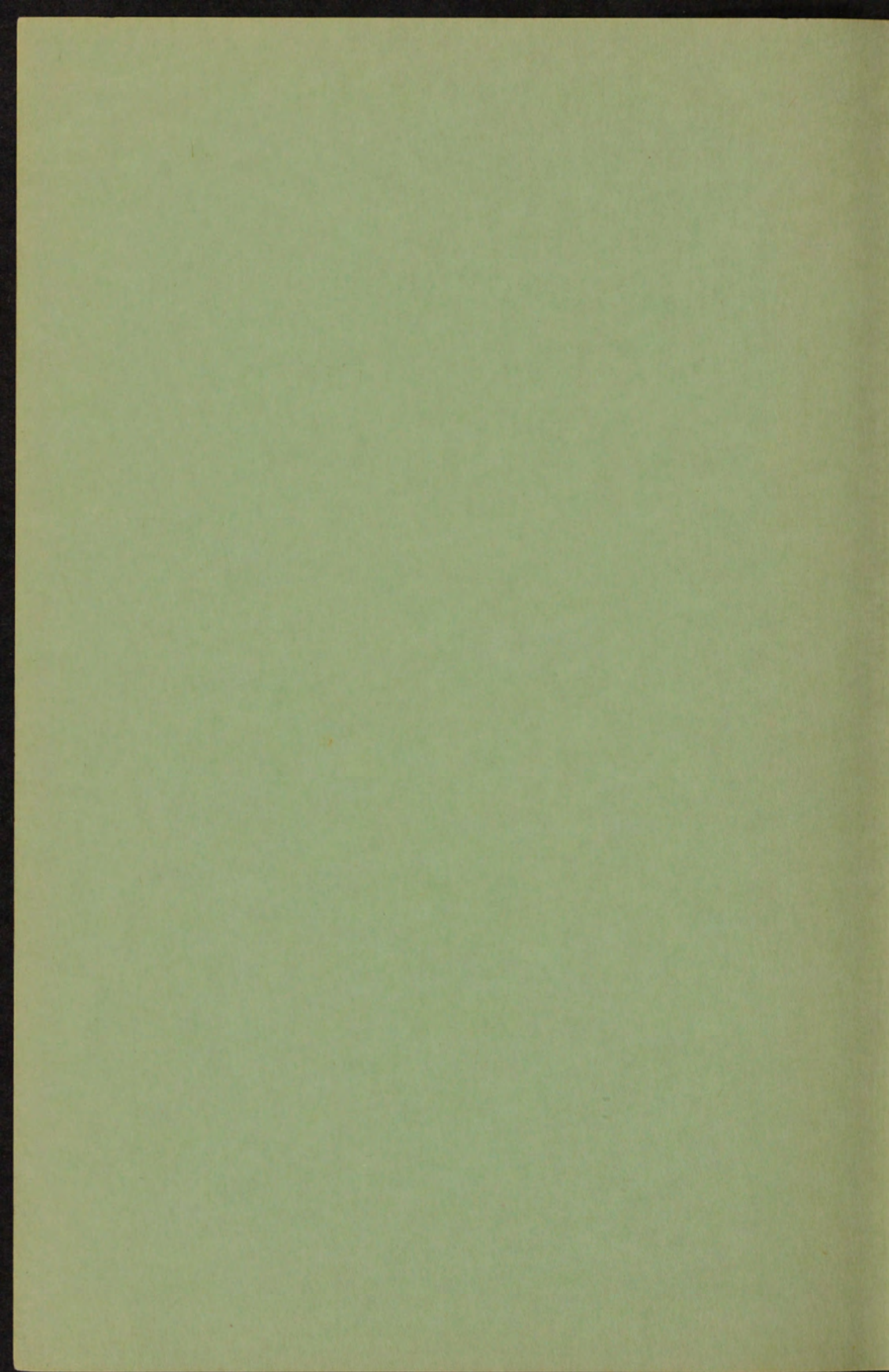
TURNER THEOLOGICAL SEMINARY

## Announcements

1962-1964

VOLUME IV

MAY, 1962



BULLETIN OF THE

# Interdenominational Theological Center

*Cooperating Seminaries*

GAMMON THEOLOGICAL SEMINARY

MOREHOUSE SCHOOL OF RELIGION

PHILLIPS SCHOOL OF THEOLOGY

TURNER THEOLOGICAL SEMINARY

ACCREDITED BY THE AMERICAN ASSOCIATION OF  
THEOLOGICAL SCHOOLS

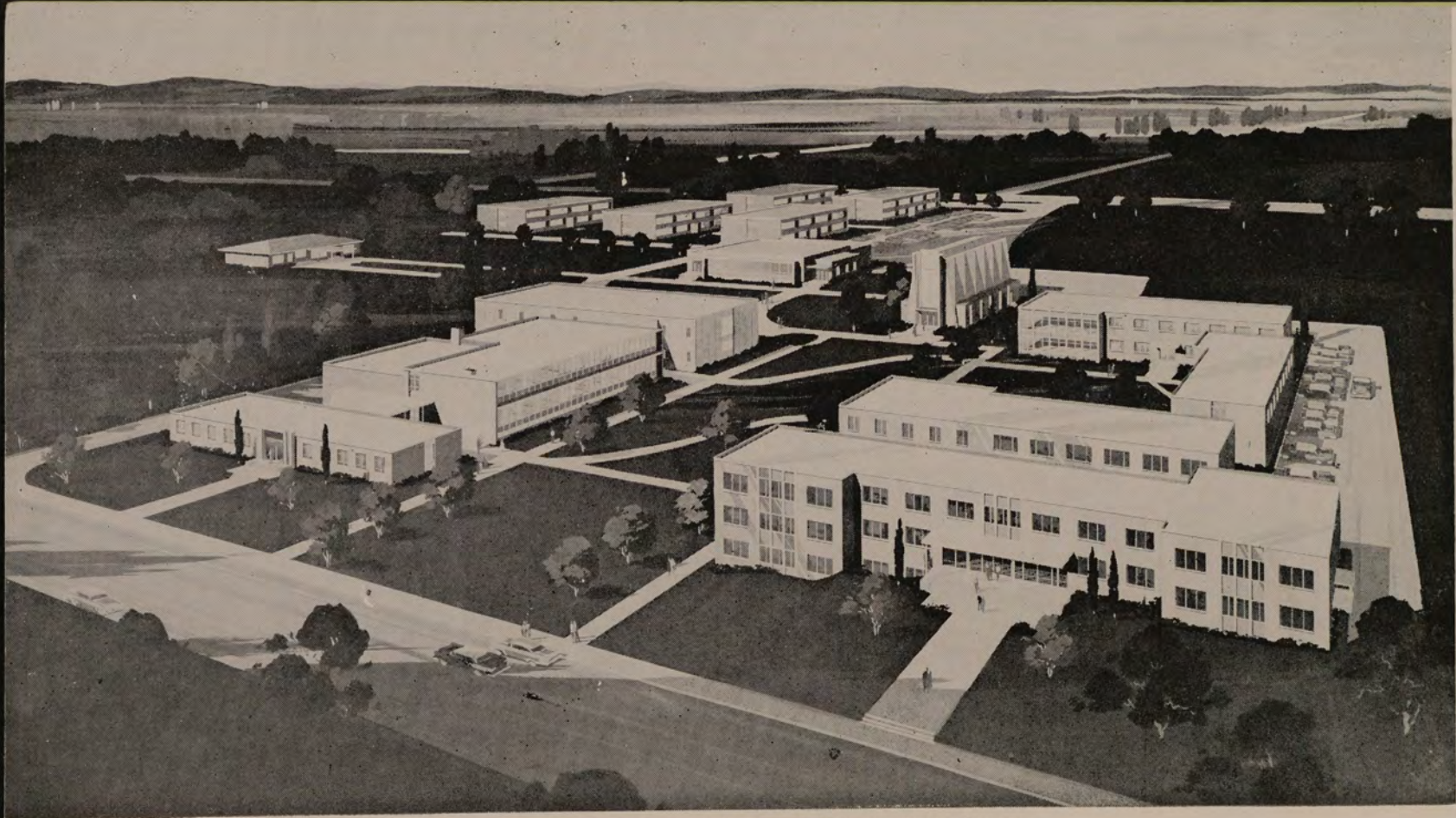
## Announcements

1962-1964

VOLUME IV

MAY, 1962

671 BECKWITH STREET, S.W.  
ATLANTA 14, GEORGIA



SKETCH OF THE INTERDENOMINATIONAL THEOLOGICAL CENTER

## TABLE OF CONTENTS

	<i>Page</i>
CALENDAR, 1962-1964 . . . . .	5
TRUSTEES, INTERDENOMINATIONAL THEOLOGICAL CENTER . . . . .	6
ADMINISTRATIVE STAFF . . . . .	7
FACULTY . . . . .	8
THE INTERDENOMINATIONAL THEOLOGICAL CENTER . . . . .	11
THE COOPERATING SEMINARIES . . . . .	12
STATEMENT OF THE CENTER'S PURPOSE . . . . .	20
STUDENT LIFE AND ACTIVITIES . . . . .	20
CHAPEL SERVICES . . . . .	20
ADMINISTRATIVE REGULATIONS . . . . .	21
Fees and Expenses . . . . .	21
Housing . . . . .	21
Financial Aid . . . . .	22
ADMISSION, REGISTRATION AND DEGREE PROGRAMS . . . . .	23
I. General Terms of Admission . . . . .	23
II. Registration . . . . .	24
Attendance . . . . .	25
Academic Standards . . . . .	25
Classification . . . . .	26
III. Degree Programs . . . . .	27
A. Bachelor of Divinity Program . . . . .	27
Schedule of Required Courses . . . . .	30
Special Requirements . . . . .	32
B. Master of Religious Education Program . . . . .	32
C. Master of Sacred Theology Program . . . . .	35
THE COURSE OF STUDY . . . . .	39
I. Division of Biblical Studies . . . . .	40
II. Division of Historical Studies . . . . .	45
III. Division of Theological Studies . . . . .	49
IV. Division of Practical Studies . . . . .	51
THE STUDENT REGISTER . . . . .	64

# 1962

# 1963

# 1964

JULY							JANUARY							JULY							JANUARY												
S	M	T	W	T	F	S	S	M	T	W	T	F	S	S	M	T	W	T	F	S	S	M	T	W	T	F	S						
1	2	3	4	5	6	7			1	2	3	4	5	1	2	3	4	5	6					1	2	3	4						
8	9	10	11	12	13	14	6	7	8	9	10	11	12	7	8	9	10	11	12	13	5	6	7	8	9	10	11						
15	16	17	18	19	20	21	13	14	15	16	17	18	19	14	15	16	17	18	19	20	12	13	14	15	16	17	18						
22	23	24	25	26	27	28	20	21	22	23	24	25	26	21	22	23	24	25	26	27	19	20	21	22	23	24	25						
29	30	31					27	28	29	30	31			28	29	30	31				26	27	28	29	30	31							
AUGUST							FEBRUARY							AUGUST							FEBRUARY												
S	M	T	W	T	F	S	S	M	T	W	T	F	S	S	M	T	W	T	F	S	S	M	T	W	T	F	S						
			1	2	3	4						1	2						1	2	3							1					
5	6	7	8	9	10	11	3	4	5	6	7	8	9	4	5	6	7	8	9	10	2	3	4	5	6	7	8						
12	13	14	15	16	17	18	10	11	12	13	14	15	16	11	12	13	14	15	16	17	9	10	11	12	13	14	15						
19	20	21	22	23	24	25	17	18	19	20	21	22	23	18	19	20	21	22	23	24	16	17	18	19	20	21	22						
26	27	28	29	30	31		24	25	26	27	28			25	26	27	28	29	30	31	23	24	25	26	27	28	29						
SEPTEMBER							MARCH							SEPTEMBER							MARCH												
S	M	T	W	T	F	S	S	M	T	W	T	F	S	S	M	T	W	T	F	S	S	M	T	W	T	F	S						
						1						1	2	1	2	3	4	5	6	7	1	2	3	4	5	6	7						
2	3	4	5	6	7	8	3	4	5	6	7	8	9	8	9	10	11	12	13	14	8	9	10	11	12	13	14						
9	10	11	12	13	14	15	10	11	12	13	14	15	16	15	16	17	18	19	20	21	15	16	17	18	19	20	21						
16	17	18	19	20	21	22	17	18	19	20	21	22	23	22	23	24	25	26	27	28	22	23	24	25	26	27	28						
23	24	25	26	27	28	29	24	25	26	27	28	29	30	29	30						29	30	31										
30							31																										
OCTOBER							APRIL							OCTOBER							APRIL												
S	M	T	W	T	F	S	S	M	T	W	T	F	S	S	M	T	W	T	F	S	S	M	T	W	T	F	S						
						1						1	2	3							1	2	3	4									
7	8	9	10	11	12	13	7	8	9	10	11	12	13	6	7	8	9	10	11	12	5	6	7	8	9	10	11						
14	15	16	17	18	19	20	14	15	16	17	18	19	20	13	14	15	16	17	18	19	12	13	14	15	16	17	18						
21	22	23	24	25	26	27	21	22	23	24	25	26	27	20	21	22	23	24	25	26	19	20	21	22	23	24	25						
28	29	30	31				28	29	30					27	28	29	30	31			26	27	28	29	30								
NOVEMBER							MAY							NOVEMBER							MAY												
S	M	T	W	T	F	S	S	M	T	W	T	F	S	S	M	T	W	T	F	S	S	M	T	W	T	F	S						
						1	2	3						1	2	3	4							1	2							1	2
4	5	6	7	8	9	10	5	6	7	8	9	10	11	3	4	5	6	7	8	9	3	4	5	6	7	8	9						
11	12	13	14	15	16	17	12	13	14	15	16	17	18	10	11	12	13	14	15	16	10	11	12	13	14	15	16						
18	19	20	21	22	23	24	19	20	21	22	23	24	25	17	18	19	20	21	22	23	17	18	19	20	21	22	23						
25	26	27	28	29	30		26	27	28	29	30	31		24	25	26	27	28	29	30	24	25	26	27	28	29	30						
DECEMBER							JUNE							DECEMBER							JUNE												
S	M	T	W	T	F	S	S	M	T	W	T	F	S	S	M	T	W	T	F	S	S	M	T	W	T	F	S						
						1						1	1	2	3	4	5	6	7							1	2	3	4	5	6		
2	3	4	5	6	7	8	2	3	4	5	6	7	8	8	9	10	11	12	13	14	7	8	9	10	11	12	13						
9	10	11	12	13	14	15	9	10	11	12	13	14	15	15	16	17	18	19	20	21	14	15	16	17	18	19	20						
16	17	18	19	20	21	22	16	17	18	19	20	21	22	22	23	24	25	26	27	28	21	22	23	24	25	26	27						
23	24	25	26	27	28	29	23	24	25	26	27	28	29	29	30	31					28	29	30										
30	31						30																										

## CALENDAR

### FIRST SEMESTER

	1962	1963
Orientation for new students .....September	13-17	12-16
Registration for new students .....Monday, September	17	16
Registration for all others .....Tuesday, September	18	17
Classes begin .....8:00 A.M., Wednesday, September	19	18
First chapel service 10:00 A.M., Thursday, September	20	19
Last day for late registration .....Tuesday, September	25	24
Matriculation day .....Tuesday, October	9	8
Last day to withdraw from a course .....Tuesday, November	13	12
Thanksgiving recess ....Thursday - Monday, November	22-26	28-2
Registration for second semester .....Friday, December	7	6
Christmas recess begins 6:00 P.M., Friday, December	21	20
	1963	1964
Christmas recess ends .....8:00 A.M., Tuesday, January	8	7
Final examinations Tuesday through Friday, January	22-25	21-24
University Center convocation 3:00 P.M. ....Sunday, January	27	26

### SECOND SEMESTER

Registration for entering students ....Tuesday, February	5	4
Classes begin .....8:00 A.M., Wednesday, February	6	5
Last day for late registration .....Tuesday, February	12	11
Atlanta University Center religious emphasis week .....Sunday through Thursday, March	3- 7	1- 5
Charter day .....Tuesday, March	12	10
Thirkield-Jones lectures .....(dates to be announced)		
Last day to withdraw from a course Tuesday, April	2	
	Tuesday, March	31
Easter recess .....Friday through Monday, April	12-15	
	March	27-30
Senior class week .....Tuesday through Friday, May	14-17	12-15
Final examinations .....Tuesday through Friday, May	21-24	19-22
Baccalaureate and commencement 4:00 P.M., Sunday, May	26	24
President's reception .....5:00 P.M.		

## BOARD OF TRUSTEES INTERDENOMINATIONAL THEOLOGICAL CENTER

### OFFICERS OF THE BOARD

Dr. Henry P. Van Dusen, Chairman  
Bishop B. Julian Smith, Vice-Chairman  
Bishop W. R. Wilkes, Secretary  
Mr. Lorimer D. Milton, Treasurer  
Dr. Benjamin E. Mays, Chairman, Executive Committee

### TRUSTEES

Bishop J. W. E. Bowen, The Methodist Church, Atlanta, Ga.  
Dr. Aaron Brown, Phelps-Stokes Fund, New York City, N. Y.  
The Rev. Archibald J. Carey, Jr., Quinn Chapel, Chicago, Ill.  
The Rev. C. D. Coleman, Board of Christian Education, Christian Methodist Episcopal Church, Jackson, Tenn.  
President Ernest C. Colwell, Southern California School of Theology, Claremont, Calif.  
Dr. Sherman L. Greene, Jr., Division of Education, African Methodist Episcopal Church, Nashville, Tenn.  
Bishop M. L. Harris, The Methodist Church, Atlanta, Ga.  
The Rev. M. L. King, Sr., Ebenezer Baptist Church, Atlanta, Ga.  
Mr. Lawrence J. MacGregor, Summit Trust Company, Summit, N. J.  
Dr. R. W. Mance, Treasurer, African Methodist Episcopal Church, Washington, D. C.  
President Benjamin E. Mays, Morehouse College, Atlanta, Ga.  
Dr. Gerald O. McCulloh, Methodist Board of Education, Nashville, Tenn.  
Mr. Lorimer D. Milton, Citizens Trust Company, Atlanta, Ga.  
Dr. Frederick D. Patterson, Phelps-Stokes Fund, New York City, N. Y.  
Bishop P. Randolph Shy, Christian Methodist Episcopal Church, Atlanta, Ga.  
Bishop B. Julian Smith, Christian Methodist Episcopal Church, Chicago, Ill.  
Dr. James S. Thomas, Methodist Board of Education, Nashville, Tenn.  
Judge Elbert P. Tuttle, Fifth U. S. Circuit Court of Appeals, Atlanta, Ga.  
President Henry P. Van Dusen, Union Theological Seminary, New York City, N. Y.  
The Rev. Ronald V. Wells, Board of Education and Publication, American Baptist Convention, New York City, N. Y.  
Bishop W. R. Wilkes, African Methodist Episcopal Church, Atlanta, Ga.



EXECUTIVE COMMITTEE

Dr. Benjamin E. Mays, *Chairman*  
Dr. Henry P. Van Dusen  
Dr. M. L. King, Sr.  
Dr. Gerald O. McCulloh  
President Harry V. Richardson  
Bishop B. Julian Smith  
Judge Elbert P. Tuttle  
Bishop W. R. Wilkes

ADMINISTRATIVE STAFF

HARRY V. RICHARDSON, A.B., S.T.B., Ph.D., D.D. \_\_\_\_\_ *President*  
CHARLES B. COPHER, A.B., B.D., Ph.D. \_\_\_\_\_ *Dean of Instruction*  
RALPH L. WILLIAMSON, B.S., S.T.B., M.S., Ph.D. \_\_\_\_\_ *Administrative  
Assistant to the President*  
ELLIS H. RICHARDS, A.B., B.D., Ph.D. \_\_\_\_\_ *Registrar*  
MRS. EVAH OSTRANDER KINCHELOE, A.B., B.S., M.A. \_\_\_\_\_ *Acting  
Librarian*  
MASTER J. WYNN, A.B., B.D., M.A. \_\_\_\_\_ *Director  
of Gammon Theological Seminary*  
LUCIUS M. TOBIN, A.B., B.D., M.A. \_\_\_\_\_ *Director of Morehouse  
School of Religion*  
MILNER L. DARNELL, A.B., B.D., D.D. \_\_\_\_\_ *Director of Phillips  
School of Theology*  
JOSEPHUS R. COAN, A.B., B.D., A.M., Ph.D. \_\_\_\_\_ *Acting Director  
of Turner Theological Seminary*  
W. A. SHIELDS, B.S. \_\_\_\_\_ *Business Manager*  
MRS. ELIZABETH ANN BRANTLEY \_\_\_\_\_ *Secretary to the President*  
MRS. FRANCES L. IRVIN \_\_\_\_\_ *Secretary to the Faculty*  
MISS SARAH J. SHERRILL \_\_\_\_\_ *Secretary to the Gammon Director*  
MRS. AMANDA B. CARNES *Cashier and Secretary to Business Manager*  
MRS. SENONO E. SHIELDS, B.S. \_\_\_\_\_ *Secretary to the Registrar and  
to the Director of Recruiting*  
EMMETT CARMICHAEL \_\_\_\_\_ *Superintendent of Buildings and Grounds*

Mailing Address:

Interdenominational Theological Center  
671 Beckwith Street, S.W.  
Atlanta 14, Georgia

## FACULTY

HARRY V. RICHARDSON.....*President and Professor of Practical Studies*  
Western Reserve University, A.B.; Harvard University, S.T.B.;  
Drew University, Ph.D.; Wilberforce University, D.D.

DAVID ABERNATHY .....*Visiting Instructor in Communications*  
High Point College, A.B.; Emory University, B.D.; International  
Christian University (Japan), and Indiana University, Special  
Studies.

J. W. E. BOWEN .....*Instructor, Methodist Church History and Polity*  
Wesleyan University, A.B.; Harvard University, M.A.; Clark  
College, Litt.D.; Claflin College, LL.D.; Wesleyan University,  
D.D.; Bethune-Cookman College, D.D.  
Bishop of the Methodist Church.

\*GEORGE MURRAY BRANCH .....*Associate Professor of Old Testament*  
Virginia Union University, B.S.; Andover-Newton Theological  
School, B.D.; Drew University, A.M.; Hebrew Union College  
and Drew University, Graduate Studies.

THOMAS CARRUTH .....*Visiting Instructor of Evangelism*  
Millsaps College, A.B.; Drew University, B.D.; Asbury College,  
D.D.

ISAAC R. CLARK .....*Professor of Homiletics*  
Wilberforce University, B.A.; Payne Theological Seminary, B.D.;  
Boston University School of Theology, Th.D.; Union Theological  
Seminary, Post-Doctoral Studies.

JOSEPHUS R. COAN.....*Professor of Religious Education and Missions*  
Howard University, A.B.; Yale University Divinity School, B.D.,  
A.M.; Columbia University, Union Theological Seminary, Gradu-  
ate Studies; Hartford Theological Foundation, Ph.D.

CHARLES B. COPHER .....*Dean of Instruction and*  
*Professor of Old Testament*  
Clark College, A.B.; Gammon Theological Seminary, B.D.; Ober-  
lin Graduate School of Theology, B.D.; Boston University, Ph.D.;  
New York University and University of Chicago, Post-Doctoral  
Studies.

---

\*On leave of absence 1962-1963.

- MILNER L. DARNELL ..... *Instructor, Christian Methodist  
Episcopal Church History and Polity*  
Paine College, A.B.; Gammon Theological Seminary, B.D.; Fisk  
University, Graduate Studies; Lane College, D.D.
- RALPH A. FELTON ..... *Visiting Professor of Rural Work*  
Southwestern College, A.B.; Columbia University, M.A.; Union  
Theological Seminary, B.D.; University of Pennsylvania, Gradu-  
ate Study; Drew University, Ph.D.
- CARRIE L. GEORGE ..... *Assistant Professor of Religious Education*  
Clark College, A.B.; Atlanta University, M.A.; Gammon Theo-  
logical Seminary, B.D.; New York University, P.C. in Religious  
Education; Ohio State University, Hartford Seminary Founda-  
tion, New York University, and Garrett Theological Seminary,  
Graduate Studies.
- ROGER S. GUPTILL ..... *Associate Professor Emeritus of Missions*  
Bates College, A.B.; Boston University, S.T.B.; Hartford Semi-  
nary Foundation, M.A.
- HUGH M. JANSEN, JR. .... *Associate Professor of History of Christianity*  
Yale University, B.A.; Episcopal Theological School, B.D.; Union  
Theological Seminary, Graduate Study.
- JOSEPH A. JOHNSON, JR. .... *Professor of New Testament*  
Texas College, B.A.; Iliff School of Theology, Th.M., Th.D.; The  
Divinity School, Vanderbilt University, B.D.; Vanderbilt Univer-  
sity, Ph.D.; Morris Brown College, D.D.; Miles College, LL.D.
- J. DE KOVEN KILLINGSWORTH ..... *Instructor in Music*  
American School of Music, B.M.E.; Chicago Conservatory of  
Music, M.Mus.Ed.; Paul Quinn College, Mus.D.
- SAMUEL C. KINCHELOE ..... *Professor of Sociology of Religion*  
Drake University, A.B.; University of Chicago Divinity School,  
M.A.; University of Chicago, Ph.D.; Pacific University, Litt.D.;  
Chicago Theological Seminary, D.D.; Drake University, D.D.
- J. EDWARD LANTZ ..... *Instructor in Speech*  
DePauw University, A.B.; Yale University Divinity School, B.D.;  
University of Michigan, M.A.; University of Chicago, Graduate  
Studies.
- MRS. RUTH C. LANTZ ..... *Instructor in Religious Education*  
Emory University, A.B.; University of Michigan, M.A.; Yale  
University and Pratt Institute, Special Studies.

- HOMER C. MCEWEN ..... *Instructor in Homiletics*  
 Dillard University, B.S.; Chicago Theological Seminary, B.D.;  
 University of Chicago, Graduate Work.
- JAMES MAXWELL MILLER ..... *Visiting Instructor in Old Testament*  
 Millsaps College, A.B.; Emory University, Graduate Studies.
- THOMAS J. PUGH ..... *Professor of Psychology and Pastoral Care*  
 Clark College, A.B.; Gammon Theological Seminary, B.D.;  
 Atlanta University, M.A.; Drew University, Graduate Study;  
 Boston University, Ph.D.; University of Chicago, Post-Doctoral  
 Studies.
- ELLIS H. RICHARDS ..... *Professor of Theological Studies*  
 Syracuse University, A.B.; Drew University, B.D., Ph.D.
- WILLIAM V ROOSA ..... *Professor of History of Christianity*  
 Drake University, A.B.; University of Chicago, M.A., Ph.D.
- LUCIUS MILES TOBIN ..... *Instructor in Baptist Church History*  
*and Polity*  
 Virginia Union University, A.B.; Colgate-Rochester Divinity  
 School, B.D.; University of Michigan, M.A.; University of Chi-  
 cago, Graduate Studies.
- MELVIN H. WATSON ..... *Associate Professor of Theology*  
 Morehouse College, A.B.; Oberlin College, M.A.; Oberlin Grad-  
 uate School of Theology, B.D., S.T.M.; University of Chicago  
 and Union Theological Seminary, Special Studies; Pacific School  
 of Religion, Th.D.
- RALPH L. WILLIAMSON ..... *Professor of Town and Country Work*  
 Iowa State College, B.S.; Boston University, S.T.B.; Cornell Uni-  
 versity, M.S.; Teachers' College, Columbia University, Special  
 Studies; Drew University, Ph.D.
- MRS. EVAH OSTRANDER KINCHELOE ..... *Acting Librarian*  
 Eastern Michigan University, A.B.; University of Denver, B.S. in  
 Library Science; University of Chicago, M.A.
- CRAYTON T. DUDLEY ..... *Assistant Librarian*  
 Clark College, A.B.; Interdenominational Theological Center,  
 B.D.; Atlanta University School of Library Science, Graduate  
 Studies.
- U. Z. MCKINNON ..... *Director of Extension Work*  
 Texas College, B.A.; Clark College, A.B.; Gammon Theological  
 Seminary, B.D.; Drew University, M.A.; Perkins School of The-  
 ology, Graduate Studies.

## THE INTERDENOMINATIONAL THEOLOGICAL CENTER

The Interdenominational Theological Center is a new seminary created in 1957 through the cooperation of four schools of theology, representing four different denominations. The respective schools are: Gammon Theological Seminary, Methodist; the Morehouse School of Religion, Baptist; Phillips School of Theology, Christian Methodist Episcopal; and Turner Theological Seminary, African Methodist Episcopal.

The Center is one of the most significant projects in cooperative theological education ever undertaken in America. It was greatly helped by some magnificent grants from philanthropic foundations, especially from the Sealantic Fund and the General Education Board.

The Center is under the direction of a 22-member Board of Trustees. Fifteen of these trustees come from the four participating schools. The remaining seven are members-at-large chosen without regard to denominational affiliation. The Trustees employ the Faculty, set the policies and manage the physical and financial resources of the Center.

The Center was fully accredited by the American Association of Theological Schools at the bi-ennial meeting in Richmond, Va., in June 1960.

The I.T.C. is located on ten and a quarter acres of land in the heart of the Atlanta University area. The site is the generous gift of Atlanta University. In all there will be about twenty buildings in the physical plant, including the denominational dormitories which are being erected by the four schools. When complete the plant will be valued at nearly three million dollars.

The buildings and all other facilities are of the most modern type. They provide every modern resource for effective instruction and comfortable living.

The persons who make up the Faculty of the Center have been chosen both for scholarly competence and for teaching ability. They constitute an outstanding group among the

seminaries of the nation. The Library of the Center contains nearly forty thousand volumes. Most of these volumes have been contributed by Gammon Seminary, along with the other schools. The Library has some outstanding collections, among them a collection on Negro history in Africa and America, and a distinguished collection of Bibles.

The Center's location in Atlanta offers many advantages. Atlanta is one of the principal transportation centers of America. It is directly accessible by train, plane and motor lines from all sections of the nation. Atlanta, also, has many peculiar advantages as a social laboratory. The Negro community of Atlanta is one of the most progressive in the nation with abundant commercial establishments, industries, and professional services. The churches of the city with their social service programs, the welfare agencies and penological institutions all provide a laboratory for the student preparing for human service.

Atlanta is one of the world's greatest educational centers. There are six institutions of higher learning in the city which are federated into the Atlanta University Center: Atlanta University, Clark College, The Interdenominational Theological Center, Morehouse College, Morris Brown College and Spelman College. The I.T.C. is an integral member of this federation and shares in the resources and opportunities afforded by these schools.

The Center's curricular offerings are enriched by cooperative working relationships with The Protestant Radio and Television Center and the E. Stanley Jones Institute of Communicative Arts, both of which are Atlanta institutions located near Emory University.

## **THE COOPERATING SEMINARIES**

### **GAMMON THEOLOGICAL SEMINARY**

#### **HISTORICAL STATEMENT**

Gammon Theological Seminary was founded in 1883 by the Methodist Episcopal Church. Bishop Gilbert Haven and

the officers of the Freedmen's Aid Society had purchased nearly 500 acres of high land in the southern suburbs of Atlanta to which Clark University was moved in 1881.

A department of theology was established in Clark University in 1882 through the efforts of Bishop Henry White Warren, resident Bishop, and the gift of \$20,000 for endowment from the Rev. Elijah H. Gammon, a superannuated Methodist minister of the Rock River (Illinois) Conference. The enthusiasm and cooperation of these two men led to the erection of Gammon Hall which was dedicated on December 18, 1883. In June of that year the Rev. Wilbur Patterson Thirkield was elected Dean, and "Gammon School of Theology" was officially opened on October 3, 1883.

Within four years Mr. Gammon offered to give the school more liberal support on condition that it become independent of Clark University so that it might serve the entire Methodist Episcopal Church and all her colleges in the South. In April 1887 the official connections between Gammon and Clark were dissolved, and in January 1888 Mr. Gammon added \$200,000 to the endowment fund. The School was granted a charter on March 24, and the name was officially changed to its present name on December 28 of that year.

When Mr. Gammon died July 3, 1891, he had willed the Seminary sufficient additional funds to bring his total gift to more than half a million dollars. In his plans, he intended the Seminary to be a central theological school of the Methodist Episcopal Church for the entire South, open to students of all races and all denominations alike. The Seminary has always offered without distinction of race, to all students for the Christian ministry, a thorough, extensive, and well-arranged course of study.

From the very beginning the Seminary has played a vital part in the life and progress of Negroes in America. It has provided leaders of highest caliber who have served in varied capacities.

A recent survey shows that of the more than one thousand graduates of Gammon:

- 59 have served as professors in colleges
- 20 have become college presidents
- 116 have become district superintendents
- 24 have become church board secretaries
- 54 served as chaplains in World War II
- 10 have become editors of church papers
- 15 have become bishops, 9 in the Methodist Church, 6 in other denominations.

Hundreds have become ministers of wide influence, holding leading pulpits in all major denominations. One-fourth of the Conference members in the Central Jurisdiction of the Methodist Church are Gammon men.

Through its participation in the I.T.C. Gammon enters upon a new era of larger service to the Church.

## THE MOREHOUSE SCHOOL OF RELIGION

### HISTORICAL STATEMENT

Morehouse College in Atlanta is an institution for the education of men for constructive leadership and service. It was founded in 1867 by the American Baptist Home Mission Society of New York and was established in Augusta, Ga., as "The Augusta Institute". One of the purposes was the preparation of men for the ministry and the School of Religion of Morehouse College has carried out this responsibility through the years and continues to do so as a part of the new Interdenominational Theological Center.

It was in 1879 that "The Augusta Institute" was moved to Atlanta and became incorporated as "The Atlanta Baptist Seminary": It was housed in a three story building which it owned on a spot near the present Terminal Station. In 1890 the school was removed to its present location and in 1897 was renamed "The Atlanta Baptist College". In 1913 the name "Morehouse College" was adopted in honor of Dr.



Henry L. Morehouse, Corresponding Secretary of the American Baptist Home Mission Society and a constant friend and benefactor of the Negro race.

Among its notable early leaders were The Rev. Joseph T. Roberts, LL.D., who was president from 1871 to 1884; The Rev. Samuel Graves, D.D., President from 1885 to 1890; President George Sale, 1890 to 1906; and President John Hope, 1906 to 1931.

In 1931 President Hope resigned and was succeeded by Dr. Samuel Howard Archer, who had served the College as professor since 1903, and dean since 1920. On March 1, 1937, Dr. Charles D. Hubert, Director of the School of Religion, upon the recommendation of President Archer, was elected Acting President. President Archer, however, did not formally retire from the presidency until October 1, 1938, when he became President Emeritus. Dr. Hubert served as Acting President until July 1, 1940, when Dr. Benjamin Elijah Mays assumed the office of President. Dr. George D. Kelsey was Director of the Morehouse School of Religion from 1944 to 1948. Reverend Lucius M. Tobin was the Acting Director 1948-1949. Dr. Melvin H. Watson served as Director from 1949-1959. The I.T.C. began operation in September 1959.

Atlanta Baptist Seminary was founded as an institution primarily for the training of ministers. From the year 1884 through 1923 certificates were granted to several hundred ministers. The first B.Th. degrees were offered in 1925 and discontinued in 1931; the B.D. program has been offered from 1926 to the present. The principal emphasis has been upon training men for the active pastorate.

## THE PHILLIPS SCHOOL OF THEOLOGY

### HISTORICAL STATEMENT

The importance the founding fathers attached to the education of men for the ministry of the Christian Methodist

Episcopal Church may be seen in the following statement from the first Episcopal Message of the Bishops to the 1873 session of the General Conference of the C.M.E. Church: "Next to the maintenance of sound doctrine and godly discipline (and it will be tributary to these), the most vital point is the education of our people, and especially the improvement of our ministry."

In less than a decade after this message was delivered, Lane College at Jackson, Tennessee, and Paine College at Augusta, Georgia, were established with the training of ministers as their primary purpose. The study of the Bible and the preparation and delivery of sermons constituted a major part of the curriculum. In later years the work at Lane was organized into the Department of Theology and degrees issued therefrom.

In May of 1944, the Board of Trustees of Lane College passed a resolution in which it recommended the establishment of a separate seminary at Lane College. The recommendation was referred to the Annual Conferences concerned. In the fall of 1944 Lane College's supporting annual conferences approved the establishment of a seminary and elected trustees of the proposed institution.

The Seminary began operation under the name of Phillips School of Theology at Lane College with the winter quarter of 1944-45, offering the Bachelor of Divinity Degree on the graduate level and the Bachelor of Theology for undergraduate students. The 1946 General Conference of the C.M.E. Church gave the Seminary connectional status.

The Phillips School of Theology, and its antecedent, the Department of Theology at Lane College have given to the Christian ministry many educated and consecrated men and women. Many of them have been and are now serving in some of the outstanding pulpits and in other important positions in the C.M.E. Church and in our sister denominations.

## PURPOSE OF PHILLIPS SCHOOL OF THEOLOGY

1. The school's primary purpose and task is that of training men and women for the Christian Ministry in the Christian Methodist Episcopal Church and other communions.

2. To inspire, inform and prepare the Christian leader for those services which are his as a religious leader.

3. To help provide the Christian Methodist Episcopal Church with an adequate supply of able and dedicated leaders who will give a Christian interpretation to the whole of life in an ever-changing world.

Beginning with the 1959-60 school term, Phillips School of Theology has operated as one of the four seminaries constituting The Interdenominational Theological Center in Atlanta, Georgia. The academic work, chapel services, the library, the dining room, dormitories for married students and some other features of the Center are conducted by a central faculty and administration.

The diploma states that the degree is awarded by The Interdenominational Theological Center in cooperation with Phillips School of Theology and contains signatures of representatives of the new Center and the Phillips School of Theology.

Graduate professional degrees in addition to the B.D. degree will be given through the Center—such as the S.T.M., and the M.R.E.

Members of the Christian Methodist Episcopal Church desiring to enter Phillips School of Theology should apply to the Reverend M. L. Darnell, Director, Phillips School of Theology, Atlanta, Georgia. He will process the application with The Interdenominational Center, and make provision for living quarters.

The College of Bishops and the General Board of Christian Education jointly administer a ministerial scholarship fund. The amount of the scholarships will vary according to the

needs of the applicant. Applications for scholarships should be made to the General Board of Christian Education, 4043 South Drexel Boulevard, Chicago 15, Illinois.

## TURNER THEOLOGICAL SEMINARY

### HISTORICAL STATEMENT

The founders of Morris Brown College believed that to educate the people and leave the pulpit ignorant would be detrimental to the church and the race and therefore they proposed to have an educated ministry. As early as September 23, 1885, just before the doors of Morris Brown were opened for the reception of students, the Rev. T. G. Stewart, D.D., was elected Dean of Theology.

But it was not until 1894 that a Theological Department was formally opened with Dr. E. W. Lee as the dean. Twelve young men matriculated the first day and in three months twenty-four had enrolled. Among those who served as deans and professors during the next few years were: The Rev. J. S. Flipper, D.D., The Rev. W. G. Alexander, The Rev. M. M. Ponton, A.M., The Rev. J. D. Bibb, A.M., and the Rev. J. A. Brockett, D.D.

On June 19, 1900 the Executive Board, by unanimous vote, changed the name from the Theological Department of Morris Brown University to Turner Theological Seminary in honor of Bishop H. M. Turner who had been influential in the development of the school from the beginning. Others who have been deans since 1900 are: The Rev. P. W. Greatheart, D.D., in 1913, The Rev. J. A. Lindsay, D.D., in 1920, The Rev. W. G. Alexander again in 1922, The Rev. George A. Singleton in 1928, The Rev. Samuel Hopkins Giles in 1929, and The Rev. Charles Leander Hill in 1933.

The Rev. Frank Cunningham was elected Dean in 1945 and served until 1954 when the Rev. Edward J. Odom, Jr.,

was elected. In 1957 The Rev. George A. Sewell, Ph.D. was elected Dean, and served until 1961.

☐ The Rev. Josephus R. Coan, Ph.D., has been acting as Dean and Director in 1961-1962.

In the fall of 1957 Turner Theological Seminary moved into its own building apart from the College where it has maintained lecture rooms, conference rooms, offices, library and a student lounge.

Through the years Turner has been a major influence in providing a trained ministry for the African Methodist Episcopal Church and other denominations, and in joining The Interdenominational Theological Center it continues and expands its tradition of ministerial service.

## STATEMENT OF THE CENTER'S PURPOSE

The Interdenominational Theological Center seeks to prepare men and women for various fields of Christian service. While it places primary emphasis on the pulpit and pastoral ministry, the Center provides a foundation for ministries in the educational, missionary, institutional, social and related fields.

This preparation requires a knowledge of the Old and New Testaments, the history of the Church, the basic tenets of the Christian faith and the development of skills and effectiveness in preaching and in the practical aspects of Christian service.

The Center regards the development of the personal Christian life of each student as basic to the realization of this goal.

## STUDENT LIFE AND ACTIVITIES

The Center affords abundant facilities for fine fellowship and pleasant living. Rooms are spacious and airy. Dormitories are equipped with modern conveniences. The large campus permits outdoor recreation of many kinds.

Student life at the Center is largely under the direction of a student Christian society. This student organization directs practically all of the extra-curricular activities at the Center. Through the society, the Center participates in The Inter-seminary Movement and other student Christian activities, and works to promote student welfare and progress.

## CHAPEL SERVICES

Worship services are held regularly throughout the year. They provide for the cultivation of the devotional life of the students and also furnish opportunities for training in the conduct of public worship. The services bring many distinguished Christian leaders to the campus each year.

# Administrative Regulations

## FEEES AND EXPENSESES

### *Tuition and Fees*

Tuition for the B.D., M.R.E., or S.T.M. degree.....	\$350.00	per year*
Tuition for less than twelve semester hours.....	12.00	per hour
Registration Fee .....	5.00	
Library Fee .....	3.00	
Student Activity Fee .....	16.00	
Housing Deposit .....	20.00	
Breakage Deposit (Refundable)		
Dormitory .....	15.00	
Apartment or Cottage .....	25.00	
Late Registration Fee .....	3.00	
Maintaining Matriculation Fee .....	5.00	
Graduation Fee: B.D., M.R.E., or S.T.M. degree....	15.00	
Thesis Binding (two copies) .....	10.00	

(Fees must be paid in cash at Registration; they are not covered by scholarship aid.)

### *Board*

The charge for board is \$405.00 per year.\*\*

The dining hall is operated for the convenience of the students. It is expected that all students who live in the dormitory will take their meals in the dining hall.

The dining hall opens on the day that new students arrive and closes after supper on the day following Commencement. The dining hall will be closed during Thanksgiving, Christmas, and Easter holidays.

### *Housing*

#### MEN

The charges for a furnished room in a dormitory are:

Room for single occupant: \$180 per academic year.\*

Room for two or more occupants: \$135.00 per academic year.\*\*

Individuals who wish to reserve accommodations in the dormitories or apartments are required to send a twenty dollar Housing Deposit. This deposit will be credited to the in-

\* See statement regarding Student Financial Aid.

\*\* Semester payments for board and housing are due on registration day. However, arrangements may be made at the Business Office for monthly payments.

dividual's account when he registers.

If an individual who has had housing accommodations reserved does not register, and does not notify the Business Office before the last day for registration, his deposit will be forfeited.

#### MARRIED STUDENTS

Efficiency apartments are available for married students who do not have children. The charge for these apartments is \$540.00 per school year. This charge includes gas and electricity.

One-bedroom apartments are available for married students who have one or two small children. The charge for these apartments is \$540.00 per school year. In addition to this charge, students who occupy these apartments must pay their own gas and electric bills.

The apartments are completely furnished. Students must provide their own linen, dishes, and kitchen utensils.

Because of the heavy demand for living quarters for married students, applications should be made as far in advance as possible. Assignments will be made in the order in which Applications for Admission are approved, and Housing Deposits are received.

#### STUDENT FINANCIAL AID

Financial aid in meeting the cost of tuition and other expenses at the Center will be provided for qualified students on the basis of need. Application should be made to the Director of the respective school or the President of the Center.

There are opportunities for work in the City of Atlanta through which a student may supplement his income if necessary.



## *Admission, Registration and Degree Programs*

### I. GENERAL TERMS OF ADMISSION

The Center is open on equal terms to qualified men and women of every Christian denomination. Persons seeking admission to the Center should apply to the Registrar for an official form of Application for Admission. Address: *The Registrar, The Interdenominational Theological Center, 671 Beckwith St., S.W., Atlanta 14, Georgia.*

Each applicant must submit the following credentials:

- A. Evidence of an A.B. or equivalent degree from a recognized college or university.
- B. An official transcript of all his college, university or seminary records showing all courses pursued, the grades received and the degree earned, must be sent by the issuing institution directly to the Registrar.
- C. A certificate of good standing in a Christian church furnished by officials of that church should accompany the application. An applicant from The Methodist Church must present either a certificate of ordination for the ministry, a local preacher's license or a recommendation from the Board of Ministerial Training and Qualifications of his Annual Conference. Applicants from other denominations must present similar credentials from the proper officials of their respective churches.
- D. A transfer student must present a letter of honorable dismissal and a statement of recommendation from his previous seminary.
- E. Each entering student must pass a standard English examination in order to be admitted without condition. This condition must be removed in order to become a candidate for a degree.

Applicants, even those from accredited colleges, found seriously deficient in pre-seminary studies (see page 27) may be required to make up such deficiencies in ways designated by

the faculty. Courses taken to remove such deficiencies will carry no credit toward the semester hours required for graduation.

## II. REGISTRATION

The academic year includes two semesters of sixteen weeks each. Credit toward the Center's degrees may be earned in the Atlanta University Summer School of nine weeks.

The *unit of credit* is the semester hour. Twelve semester hours are the minimum and 17 the maximum for the regular student. Any student desiring to carry more than 17 hours must have a cumulative average of at least B, and must secure special faculty permission. Entering students will be limited to 15 semester hours until they have proved their ability to do satisfactory work.

*Registration* should be made on the day announced in the calendar. Registration after the first week of the semester may be made only by special permission of the faculty with the approval of each instructor concerned.

*Changes* in registration must be made with the Registrar within the first week of the semester and after the student has secured the approval of the Dean and the instructors concerned. *A course may not be entered* after the first week except by special permission of the faculty and with the approval of the Dean and the instructor concerned.

*Registration in a course* is usually *for credit*, but a student, with the consent of the instructor, may register as *an auditor*. Credit cannot be earned in a course unless the student has registered for credit in the regular way.

*Withdrawal* from a course within the first eight weeks of the semester with the approval of the Dean, the Registrar, and the instructor concerned shall be marked Withdrawn, or W. Withdrawal without the approval of the Dean, Registrar, and instructor shall be marked Withdrawn Unofficially or WU.

## ATTENDANCE

*Attendance at classes is required.* Each instructor keeps a record of attendance and reports to the Registrar the total absences of each student with his grade at the end of the semester. Reasons for absences need not be reported and no excuses are granted.

Three tardinesses will count as one absence. It is the student's responsibility to report tardiness to the instructor at the close of the class. A tardiness of fifteen minutes or more becomes an absence.

Absences are counted from the first session of a class. Thus a student who registers late will be charged with absences from the beginning of the class sessions.

If a student is absent from a given course twice the number of semester hours credit of that course (*e.g.*, four absences in a two-hour course), his grade for the course is reduced one full letter grade, (*e.g.*, B to C).

This penalty may be avoided by the satisfactory completion of makeup work at the discretion of the instructor.

If a student's absences in a given course amount to three times the number of its semester hours credit, (*e.g.*, six absences in a two-hour course), his grade for the course is reduced one further letter grade. If his absences in a course amount to four times the number of credit hours, his enrollment in that course is automatically cancelled with no opportunity to make up work, and his grade is registered as WF.

The instructor shall notify the student and the Registrar when a cancellation has occurred.

Regular attendance is expected of all students at chapel and all meetings of the Center.

## ACADEMIC STANDARDS

At the close of each semester, each instructor reports the grades of each student in his classes to the Registrar.

Grades are awarded as follows: A, Excellent, 90-100;

B, Good, 80-89; C, Fair, 70-79; D, Poor, 60-69; E, Conditional Failure; F, Complete Failure; Inc., Incomplete; W, Withdrawn; WF, Withdrawn Failing; WU, Withdrawn Unofficially. A plus or a minus sign may be used to indicate a grade more accurately.

Quality points are reckoned as follows: A=3; B=2; C=1; D=0; E=0; F=minus 1.

Not more than 15 semester hours of the total 94 required for the B.D. degree or 10 semester hours of the 60 required for the M.R.E. degree may be of D grade. An E grade may be raised no higher than D by additional work assigned by the instructor in the course. An Inc. may be removed by special arrangement with the instructor concerned. Both the E and the Inc. must be removed within one calendar month following the close of the semester.

Any student whose cumulative average is below C is automatically placed on probation and his load limited to about twelve hours.

A student whose average for a given semester is below C may be placed on probation by the Curriculum Committee.

Strict probation shall be imposed only by faculty action upon the recommendation of the Curriculum Committee and shall not be continued beyond one semester.

*A Manual for Writers of Term Papers, Theses and Dissertations* by Kate L. Turabian is to be used as the official standard for style for all written work.

#### CLASSIFICATION

**JUNIORS:** Candidates for either the B.D. or the M.R.E. degree who enter without conditions are classified as Juniors.

**MIDDLERS:** Candidates for the B.D. degree who have completed 28 semester hours with 28 quality points are classified as Middlers.

**SENIORS:** Candidates for the B.D. degree who have completed 58 semester hours with 58 quality points, including all

required first year courses, are classified as Seniors. Candidates for the M.R.E. degree who have completed 30 semester hours with 30 quality points and are enrolled for their required second year's courses including the supervised field work are classified as Seniors.

A student's classification may change in mid-year. All classification lists must conform to the Registrar's records.

### III. DEGREE PROGRAMS

The Center offers three degree programs as follows: the Bachelor of Divinity degree; the Master of Sacred Theology degree; and the Master of Religious Education degree.

#### A. BACHELOR OF DIVINITY PROGRAM

##### 1. Undergraduate Pre-Seminary Studies

Prospective students are urged to secure a well-rounded college education. The American Association of Theological Schools recommends that the student take 90 semester hours or approximately three-fourths of his college work in the following specific areas:

*English*—literature, composition, speech and related studies. At least 6 semesters.

*History*—ancient, modern European and American. At least 3 semesters.

*Philosophy*—orientation in history, content and method. At least 3 semesters.

*Natural sciences*—preferably physics, chemistry and biology. At least 2 semesters.

*Social sciences*—psychology, sociology, economics, political science and education. At least 6 semesters, including at least 1 semester of psychology.

*Foreign languages*—one or more of the following: Latin, Greek, Hebrew, German, French. At least 4 semesters.

*Religion*—a thorough knowledge of the content of the

Bible is indispensable, together with an introduction to the major religious traditions and theological problems in the context of the principal aspects of human culture outlined above. The pre-seminary student may well seek counsel of the seminary of his choice in order most profitably to use the resources. At least 3 semesters.

Of the various possible areas of concentration, where areas of concentration are required, English, philosophy and history are regarded as the most desirable.

## 2. Terms of Admission

- a. Graduates of accredited liberal arts colleges, whose personal and academic credentials are satisfactory, usually are admitted without conditions.
- b. Graduates of non-accredited liberal arts colleges, or of accredited state institutions, such as teachers' colleges, and technical schools, will be considered on the merits of their personal and academic records. Those admitted will be placed *on probation* until all pre-seminary deficiencies have been made up and prescribed tests and examinations have been satisfactorily passed.
- c. Special Students
  - (1) Graduates of colleges or universities who do not plan to study toward a degree may, with the approval of the faculty, register for courses.
  - (2) An occasional college senior who lacks a few hours of completing his requirements for graduation may be admitted on the following conditions: if he is a classified senior in good standing with 96 or more semester hours of credit and can present an official statement from his college dean certifying that plans have been approved for the completion of his degree before the beginning of the next academic year, he

may be admitted to one or more of the Center's courses which, together with his college work, shall not exceed the maximum load for Juniors.

*All special students must present the same credentials as required of regular students. They are distinctly on trial and may be asked to withdraw at any time that their class attendance and assigned work are found to be unsatisfactory.*

### 3. Requirements for the Bachelor of Divinity Degree

- a. The minimum requirements for the Bachelor of Divinity degree are 94 *semester hours* completed with a grade point average not lower than 1, or C. Not more than 15 semester hours may be of D grade, i.e., without quality points. All requirements for the B.D. must be completed within five years from the date of first registration. If work has not been completed within this period, a candidate may apply to the Faculty for re-admission.
- b. Each B.D. candidate will be required to pass a comprehensive examination covering the four divisions of the curriculum of the Center. This will be taken in the first semester of the senior year. A student who fails this examination may be required to enroll in a non-credit remedial course. Make-up examinations will be arranged once each semester, with a maximum of two such examinations for a given student.
- c. Each candidate must present a critical essay by March 1 of his senior year. His topic must be selected and be approved by the Dean of Instruction by December 1 of his senior year.
- d. Distribution of Hours

The curriculum is organized on the Divisional Plan, and the minimum requirements are distributed as follows:

DIVISION I—Biblical Studies—20 hours	
A. Old Testament Studies .....	10 hrs.
B. New Testament Studies .....	10 hrs.
DIVISION II—Historical Studies—16 Hours	
A. History of Christianity .....	10 hrs.
B. Christian Missions and History of Religions .....	6 hrs.
DIVISION III—Theological Studies—10 hours	
A. Philosophy .....	4 hrs.
B. Christian Theology .....	6 hrs.
DIVISION IV—Practical Studies—28 hours	
A. Homiletics .....	6 hrs.
B. Parish Administration .....	6 hrs.
C. Psychology and Pastoral Care .....	4 hrs.
D. Music and Worship .....	4 hrs.
E. Church and Society .....	4 hrs.
F. Religious Education .....	4 hrs.
Total Required Courses .....	74 hrs.
Total Elective Courses .....	20 hrs.
<hr/>	
TOTAL .....	94 hrs.

e. Schedule of Required Courses

JUNIOR SCHEDULE

*First Semester*

IA1J Old Testament History and Literature .....	2
IB1J New Testament History and Literature .....	4
IIA1J Survey of Christian History .....	2
IIIA1J Philosophy and Religion .....	2
<hr/>	
Total .....	10



*Second Semester*

IA2J Old Testament History and Literature .....	4
IB2J New Testament History and Literature .....	2
IIA2J Survey of Christian History .....	4
IIIA2J Philosophy and Religion .....	2
IVA2J Public Speaking — or alternate requirement	
IVA5J Speaking and Group Leadership .....	2
<hr/>	
Total .....	14

MIDDLER SCHEDULE

*First Semester*

IIB3M History of Christian Missions .....	2
IIIB3M Systematic Theology .....	4
IVA3M Preparation of Sermons .....	2
IVE3M Sociology of Religion — or alternate	
requirement IVE4M .....	4
IVB11M Field Work .....	1
<hr/>	
Total .....	13

*Second Semester*

IIIB4M Systematic Theology .....	2
IVA4M Delivery of Sermons .....	2
IVC4M Pastoral Psychology .....	2
IVF2M Introduction to Religious Education .....	4
IVD2M Worship .....	2
IVE4M (See IVE3M above)	
IVB12M Field Work .....	1
<hr/>	
Total .....	13

SENIOR SCHEDULE

IVB1R Church Administration .....	2
IVB13R Studies in Ministerial Leadership .....	2
IVC3R Pastoral Counseling .....	2
IVD1R Hymnology .....	2
or alternate requirement IVD3R Church Music	
<hr/>	
Total .....	8

#### f. Special Requirements

If a student returns after an absence of more than two years, his requirements will be those current when he re-enters.

A student transferring from another accredited seminary must complete at least his last 30 semester hours in residence at the Center.

*Methodist Students* should note the requirement of the *Discipline* (1960, Par. 344) of two semester hours each in Methodist history, polity and doctrine. Courses IIA11, *History of Methodism*, IVB6d, *The Discipline of the Methodist Church*, and IIIB7, *Theology of John Wesley*, are designed to meet this requirement and should be included in the schedule of all students seeking admission to an Annual Conference of The Methodist Church.

Courses in denominational history or polity which may be denominational requirements are regarded as prerequisite for study toward a graduate degree.

*Special Requirements of Seniors:* (1) All required first year courses should be completed before the beginning of the student's senior year; (2) all outstanding conditions (such as grades—E and Inc.) must be removed before the Christmas vacation of his senior year; (3) all conditions from his first semester of his senior year must be removed before March 1. Failure to comply with these requirements automatically removes the student's name from the list of candidates to be recommended by the faculty to the Board of Trustees for graduation at the forthcoming Commencement.

### B. MASTER OF RELIGIOUS EDUCATION PROGRAM

#### 1. Purpose of the Program

The purpose of the program is to provide training for Christian service for the following groups:

- a. Those who may enter full-time church work in other fields but who need religious education as supplementary to other training. This group would include social workers of various kinds, not necessarily under church auspices.
- b. Those who wish to prepare for one of the following types of positions: educational assistants in the local church; certified directors of Christian education in local churches, districts or conferences; religious social workers in Community Centers, the Y.M.C.A. or Y.W.C.A., Boy Scouts, Girl Scouts, or Campfire Girls; or teachers of the Bible, Religious Education and related subjects in schools and colleges.

## 2. Terms of Admission

All persons seeking candidacy for the M.R.E. degree must meet the requirements for admission to the B.D. program as outlined (see pp. 27-29).

## 3. Requirements for the Degree

All requirements must be completed within five years from date of registration. If a student returns after an absence of more than two years, the requirements will be those current when he re-enters.

Candidates for the degree must complete 60 semester hours of post-collegiate work with a grade point average not lower than C. Not more than 10 hours may be D grade. A minimum of 24 hours must be in Religious Education courses.

A student transferring from another accredited seminary must complete at least his last 30 semester hours in residence at the Center.

## FIRST YEAR — SEMESTER I

	<i>Hours Credit</i>
Old Testament History and Literature .....	2
Program Building for Children .....	2

Survey of Christian History .....	2
Psychology of Religion .....	2
Field Work and Supervision .....	1
Electives .....	4
	<hr/>
	13

#### SEMESTER II

Old Testament History and Literature .....	4
Program Building for Adolescents and Adults .....	4
Philosophy and Religion .....	2
Survey of Christian History .....	4
Worship in the Church School .....	2
Field Work and Supervision .....	1
	<hr/>
	17

#### SECOND YEAR — SEMESTER I

New Testament History and Literature .....	4
History of Christian Missions .....	2
The Church and Human Relations .....	2
Hymnology or Church Music .....	2
Field Work and Supervision .....	1
Leadership Training .....	4
	<hr/>
	15

#### SEMESTER II

New Testament History and Literature .....	2
Curriculum .....	2
Field Work and Supervision .....	1
Electives .....	8
	<hr/>
	13

Note: If necessary, substitutions in these courses may be arranged in consultation with the instructor in Religious Education and the Dean of Instruction.

#### 4. Field Work and Supervision

As a part of the academic requirements for the M.R.E. degree, each candidate must pursue a field work project for two academic years. The project is chosen in consultation with the major professor. A report of the work experience is written up as the work progresses. Two copies of this report must be in the hands of the major professor by April 10 of the senior year. One copy will be filed in the Center's library.

## C. MASTER OF SACRED THEOLOGY PROGRAM

### *Terms of Admission*

The Theological Center offers the Master of Sacred Theology degree in the Divisions of Biblical Studies, Historical Studies, and Practical Studies. This is a graduate professional degree primarily for students in the pastoral and related ministries. Candidacy for this degree is open to persons holding the Bachelor of Divinity degree or its equivalent from a recognized theological seminary. All students are admitted first as unclassified graduate students.

An applicant must have maintained an average grade of B or above for his B.D. course to be admitted without conditions. An applicant whose seminary record is below this average, but who has other qualifications, may be enrolled as a special student for one semester. If he attains a B average for a minimum of 12 semester hours, he may apply for admission as a graduate student.

Upon completion of 12 semester hours of graduate work, with a minimum average of B, and with no grade below B in his major field, a student may be admitted to candidacy.

Recommendation to candidacy shall be made by the Division concerned, to the Graduate Committee, who in turn shall make recommendation to the Faculty for final action.

### *General Requirements for the Master of Sacred Theology*

1. A minimum of 30 semester hours beyond the Bachelor of Divinity degree, or its equivalent is required. No work can be credited which has been applied on another degree. At least a B average is required. A minimum of 24 hours must be done in residence.

2. A minimum of 18 hours with no grade below B must be earned in his major field.

3. A maximum of 12 semester hours may be earned in other departments. Courses taken must be above the introductory level, and selected in consultation with the student's major professor.

4. At the beginning of his work a student shall consult with the Dean of Instruction, who will refer him to the proper division for assignment to a major professor. A program of study is to be worked out by the student in consultation with his major professor, with the approval of the Dean of Instruction.

5. Facility in the use of ancient or modern languages, making source material available to the student, *may* be required as a prerequisite. Language examinations will be administered as needed. Application to take these examinations must be made to the Graduate Committee at least ten days in advance of the date of the examination.

6. An acceptable thesis is required for the degree. The subject must be chosen in consultation with the major professor and approved by the Graduate Committee by November 15, for a degree to be awarded the following commencement.

7. The first draft must be submitted to the major professor by February 15. Two unbound, typewritten copies of the final draft must be filed with the Registrar by April 15 in order for a degree to be awarded that year. The thesis must be approved by the major professor and a second reader. *A Manual for Writers of Term Papers, Theses and Dissertations* by Kate L. Turabian is to be used as the official standard for style.

8. Each candidate must pass an oral examination on his thesis and the field of his research.

9. The requirements for the degree must be completed within five years from the date of admission to candidacy. At

the end of five years, application may be made to the faculty for re-admission.

10. After the student has been admitted to candidacy, he must maintain his matriculation when not enrolled in courses, by paying the annual fee required by the Center.

11. A maximum of 6 semester hours, with 12 or more quality points, may be credited by transfer from another seminary or university.

12. Students entering the graduate program from an un-accredited theological seminary, or with a grade point average of less than B, are required to take a minimum of 6 semester hours in addition to the 30 hours required for graduation.

13. Students in the S.T.M. program must take the tests required of all students entering I.T.C.

14. A student may audit courses while pursuing his degree.

15. Not more than 6 semester hours may be earned in directed study or reading courses, arranged by the major professor, and approved by the Dean of Instruction.

16. The total program will probably require two academic years to complete.

#### Research Assistantships

A limited number of Graduate Research Assistantships are available for well qualified students seeking the STM degree. The grants amount to \$2,500 plus free tuition for the two-year period. The student is limited in his course load to a maximum of 10 hours and must also be available for full time research during the middle summer. Application may be made to the President of The Center.

#### Division of Biblical Studies

The S.T.M. Degree in this Division may be taken in either Department, Old Testament or New Testament.

## DIVISIONAL REQUIREMENTS

1. At least 8 hours of Hebrew or Greek, depending upon the student's major department. A minimum of 4 hours is a prerequisite, and will not be counted for graduate credit.

2. Credit may be given for any course above the introductory level in the Division of Biblical Studies, if it has not already been credited for the B.D. degree.

### Division of Historical Studies

At present the S.T.M. Degree in this Division may be taken in the field of Early Christian History.

The special requirements will depend upon the student's area of research.

### Division of Practical Studies

At present the S.T.M. Degree in this Division may be taken in either of the following Departments: Church and Society or Religious Education.

All work in Religious Education by B.D. graduates will be conducted under the S.T.M. degree.



# The Course of Study

1962-1964

The curriculum is organized around fields of study as indicated in the following Divisions:

- I. Biblical Studies
- II. Historical Studies
- III. Theological Studies
- IV. Practical Studies

NOTES: The letters J, M, R, used with the course numbers indicate courses which are *required* for JUNIORS, MIDLERS and SENIORS, respectively.

Courses may be changed without previous notice. In the case of exceptional students a few courses may be offered as directed study or guided research projects.

Courses marked with an asterisk \* may be taken for credit in either department in which they appear.

## DIVISION I. BIBLICAL STUDIES

### A. Old Testament Studies

\*Branch, Copher, Miller

#### 1,2J OLD TESTAMENT HISTORY AND LITERATURE

A course in the history and literature of the Hebrews from earliest times through the Old Testament period, based upon biblical and extra-biblical sources. During the first part of the course attention is given to the origin and transmission of the biblical text, archaeology, geography and early general history of the Near East; during the second, emphasis is placed upon the literature and the historical situations out of which it grew. (Required of Juniors)

First Semester 2 hours; Second Semester 4 hours

*Branch or Copher*

#### 4 RELIGION AND THEOLOGY OF THE OLD TESTAMENT

A study of the origins and development of religion in the Old Testament; then of the theological views exhibited in the several Old Testament writings, and in the Old Testament as a whole. (Offered 1963-64 and every third year).

*Copher*

Second Semester 4 hours

#### 5 PROPHETS

A general introduction to the prophetic movement and literature of the Old Testament.

*Copher*

First Semester 4 hours

#### 6 THE BOOK OF THE TWELVE PROPHETS

A study of the various briefer prophetic writings with reference to their historical context and religious values. (Offered in 1963-64 and alternate years).

*Branch*

Second Semester 4 hours

#### 7 ISAIAH, JEREMIAH AND EZEKIEL

An historical and critical study of the major prophetic books for their influence on Hebrew life and thought and their relevance for today. (Offered in 1963-64 and alternate years).

*Branch*

First Semester 4 hours

---

\* On leave 1962-63.

8 PSALMS

An intensive study of the book of *Psalms*, with attention given to development, organization and content. Interpretation of individual psalms is presented in the light of life situations. (Offered in 1962-63 and alternate years).

*Copher* Second Semester 2 hours

9 POETRY AND WISDOM LITERATURE

A study of the characteristics of Hebrew poetry, and of the books of *Job*, *Proverbs*, *Ecclesiastes*, *Lamentations* and the *Song of Songs*. Major emphasis is placed upon the book of *Job*. (Offered in 1964-65 and every third year).

*Copher* First Semester 4 hours

11 BIBLICAL HERMENEUTICS\*

A study of the science and art of biblical interpretation. Attention is given to historical schools of interpretation and to both general and special principles.

*Copher* First Semester 4 hours

12 BIBLICAL GEOGRAPHY\*

A study of the geography of the biblical world according to the expanding geographical horizons indicated in the Scriptures. (Offered in 1963-64 and every third year).

*Copher* Second Semester 2 hours

13 PERSONALITIES OF THE OLD TESTAMENT

A Seminar in which students are assigned or are permitted to choose particular Old Testament characters for intensive study. (Offered in 1962-63 and alternate years).

First Semester 2 hours

14 SEMINAR: HEBREW SOCIAL LIFE

A study of selected customs, mores, practices, and institutions of Hebrew life with a view to enhancing the understanding and appreciation of the Hebraic heritage. Each member of the class will do research on assigned topics upon which he will report to the class. (Offered in 1964-65 and every third year).

*Branch* Second Semester 2 hours

21,22 BEGINNING BIBLICAL HEBREW

A study of Hebrew grammar and vocabulary, with exercises

---

\* May be credited in either department in which it appears.

in translation. (Credit given only when course is pursued for a full year).

*Branch* First Semester 4 hours; Second Semester 2 hours

23,24 HEBREW SEMINAR

Reading and exegesis of selected passages.

*Branch* First Semester 2 hours; Second Semester 2 hours

IB17 HELLENISTIC BACKGROUND\*

(See description under Department of New Testament).

IB18 APOCALYPTIC LITERATURE\*

(See description under Department of New Testament).

IB25,26 THESIS RESEARCH\*

First Semester 2 hours; Second Semester 2 hours

## B. New Testament Studies

Johnson, Roosa

1,2J NEW TESTAMENT HISTORY AND LITERATURE

A course dealing with the history, method and results of New Testament critical study. (Prerequisite to all N. T. courses).

First Semester 4 hours; Second Semester 2 hours

*Johnson or Roosa*

3 LIFE AND TEACHINGS OF JESUS

A study of the life, ministry and message of Jesus as presented in the Gospels, and an examination of the miracles, parables and other discourse materials to determine what they teach concerning the basic matters of the Christian faith. Included will be an evaluation of the significance of this material for Jesus' day and for ours.

*Johnson or Roosa*

First Semester 4 hours

4 LIFE AND TEACHINGS OF PAUL

A study of the life and teachings of Paul, including his doctrine of cosmic redemption; his doctrine of man and of personal salvation; his concept of sin and death; his opinion of ethical and social behavior, including the motivations and sanctions for ethical conduct; his thought concerning faith,

---

\* May be credited in either department in which it appears.

hope, love, baptism, separation and holiness. Attention will also be given to Paul's Jewish and Gentile heritage.  
*Johnson or Roosa* Second Semester 4 hours

5 THE SYNOPTIC GOSPELS

A critical examination of selected units of the Synoptic Gospels and related materials in the Fourth Gospel, seeking to understand the theology of each of the Gospels; the teachings of Jesus; and the textual details in comparing Mark's Gospel with the other two Synoptic Gospels. (Offered in 1962-63 and every third year).  
*Johnson or Roosa* First Semester 2 hours

7 THE FOURTH GOSPEL

A careful study of the style, purpose, and thought of the Fourth Gospel in comparison with the Synoptics, with special emphasis on the message of the Gospel of John. (Offered in 1963-64 and alternate years).  
*Johnson or Roosa* First Semester 2 hours

10 NEW TESTAMENT THEOLOGY

The meaning and significance of the early Christian proclamation as developed, interpreted, and modified by the major contributors to the thought of the New Testament. An examination of the present status of the subject by a careful study of Bultmann, Dodd, Taylor and Richardson. (Offered in 1963-64 and alternate years).  
*Johnson* Second Semester 2 hours

11,12 THE FAITH OF PAUL

A study of Paul's theology through exegesis of the English text of his epistles of I and II Corinthians and Philippians will be pursued the first semester. The second semester will include an English exegesis of Romans, Galatians, and I Thessalonians, with particular emphasis given to his interpretation of the following basic concepts: Faith, Grace, Law, Sin, Righteousness, and Eschatology. (Offered in 1962-63 and every third year).  
*Johnson* First Semester 2 hours; Second Semester 2 hours

14 THE CHRISTOLOGY OF THE NEW TESTAMENT

A comprehensive study of the Christological concepts of the New Testament, seeking to determine the meaning and significance of the person and work of Jesus Christ for the emerging

Christian Community. (Offered in 1962-63 and alternate years).

*Johnson* Second Semester 2 hours

17 HELLENISTIC BACKGROUND\*

Hellenism, both Pagan and Jewish, in the Inter-Testamental and New Testament periods as an environmental factor in the spread and modification of Christianity. The Mystery Religions, Gnosticism, popular philosophy, and Hellenistic-Jewish missionary techniques will be considered. (Offered in 1963-64 and alternate years).

*Johnson or Roosa* First Semester 4 hours

18 APOCALYPTIC LITERATURE\*

A study of the nature of apocalypse, and the apocalyptic sections of the Old Testament (*Joel, Zechariah 9-14, Isaiah 24-27, and Daniel*) and the New Testament (*Revelation of John, Mark 13*). These sources will be contrasted with non-canonical and pagan apocalypses in an effort to discover their original significance and relevance for today.

19 THE ACTS OF THE APOSTLES

A study of the Apostolic Age and the beginning of the Christian Church, based upon Acts and other early Christian sources. (Offered in 1962-63 and every third year).

*Johnson or Roosa* First Semester 2 hours

20 INTRODUCTION TO TEXTUAL CRITICISM

Emphasis will be given to the principles and methods of Textual Criticism of the Greek New Testament. It will include a history of the New Testament manuscripts as well as a history of the canon. Textual theories and recent developments of textual criticism will also be considered. Some attention will be given to collation of important manuscripts. (Offered to candidates for S.T.M. degree).

*Johnson or Roosa* Second Semester 2 hours

23,24 NEW TESTAMENT GREEK

An introductory study of the Greek of the New Testament through syntax, vocabulary and Greek-English, English-Greek translations. The second semester will be a continuation of the first semester. Selected passages in the Greek New Testa-

---

\* May be credited in either department in which it appears.

ment will be read for purposes of illustrating principles of Greek grammar. (The first semester only is open to students who have had no training in Greek).

First Semester 4 hours; Second Semester 4 hours  
*Johnson or Roosa*

25 ADVANCED NEW TESTAMENT GREEK

Reading and exegesis of books of the New Testament based on the Greek text. (Offered in 1963-64 and alternate years).

*Johnson or Roosa*

First Semester 2 hours; Second Semester 2 hours

27 SEMINAR: GOSPEL OF MARK

Exegesis of the Greek text of Mark's gospel, and an examination of its background, structure, and purpose together with an evaluation of its relation to the other Synoptic Gospels and its place in the development of Christian thought. (Offered in 1962-63 and alternate years).

*Johnson*

First semester 2 hours

IA11 BIBLICAL HERMENEUTICS\*

(See description under Department of Old Testament).

IA12 BIBLICAL GEOGRAPHY\*

(See description under Department of Old Testament).

IB25,26 THESIS RESEARCH\*

First Semester 2 hours; Second Semester 2 hours

## DIVISION II. HISTORICAL STUDIES

### A. History of Christianity

Bowen, Darnell, Jansen, Roosa, Tobin

1,2J SURVEY OF CHRISTIAN HISTORY

An introduction to Christian history from its beginning to the present. The first semester will cover the period to 500 A.D.; the second semester to the present. (Required of Juniors).

*Jansen or Roosa* First Semester 2 hrs; Second Semester 4 hrs.

---

\* May be credited in either department in which it appears.

- 3 HISTORY OF CHRISTIAN THOUGHT  
 A general survey of Christian thought from the first Apologists to the Reformation, with emphasis upon the development of doctrine. (Offered in 1962-63 and alternate years).  
*Jansen* First Semester 4 hours
- 4 SEMINAR: ENVIRONMENT OF EARLY CHRISTIANITY  
 A study of the chief religions and philosophies which were rivals of early Christianity: their basic characteristics and emphases; their relation to and significance for Christianity, and why Christianity triumphed. (Offered in 1962-63 and alternate years).  
*Roosa* Second Semester 4 hours
- 5 RESEARCH IN EARLY CHRISTIANITY  
 Intensive study of selected problems in the Early Church. (Offered in 1962-63 and alternate years).  
*Roosa* First Semester 2 hours
- 6 EARLY CHRISTIAN LIFE AND LITERATURE  
 Practical aspects of Christian life, faith and worship in the early centuries; and select writings of Apostolic Fathers, Apologists, and Church Fathers, that provided inspiration and guidance for their people. Extensive use of source materials. (Offered in 1963-64 and alternate years).  
*Roosa* Second Semester 4 hours
- 8 SEMINAR: EARLY CHRISTIANITY AND ROMAN SOCIETY  
 The relation of Christianity to basic aspects and institutions of Roman life. Why and how Christianity changed from an other-worldly movement, hostile to the Roman Empire, to a position of dominance as the official religion of the state.  
*Roosa* Second Semester 4 hours
- 10 THE PROTESTANT REFORMATION  
 A study of the backgrounds, causes, and major movements of the Reformation on the continent and in England. (Offered in 1962-63 and alternate years).  
*Jansen* Second Semester 2 hours
- 11 MARTIN LUTHER  
 A study of the life and work of Luther with particular attention to his theology. (Offered in 1962-63 and alternate years).  
*Jansen* First Semester 2 hours



12 JOHN CALVIN

A study of the life and thought of Calvin, including reading and discussion of *The Institutes of the Christian Religion*. (Offered in 1963-64 and alternate years).

*Jansen* First Semester 2 hours

13 RELIGION IN AMERICA TO 1800

A study of the history of religion in America in the colonial period and the formation of the major Christian denominations to 1800.

*Jansen* First Semester 2 hours

14 RELIGION IN AMERICA, 1800 TO THE PRESENT

A study of the history of religion in America from the early nineteenth century revivals to the present.

*Jansen* Second Semester 2 hours

15 DENOMINATIONAL HISTORY

The students of each of the four participating denominations in the I.T.C. are expected to take a course in the history of their respective churches. These denominations are:

a. African Methodist Episcopal *Coan*

b. Baptist *Tobin*

c. Christian Methodist Episcopal *Darnell*

d. Methodist (Required for membership in an Annual Conference of The Methodist Church). *Bowen*

First Semester 2 hours

20 SEMINAR: LEADERS OF AMERICAN CHRISTIANITY

A biographical approach to American Christianity through its prominent leaders. (Offered in 1963-64 and alternate years).

*Jansen* Second Semester 2 hours

21 THE ECUMENICAL MOVEMENT

A study of the modern Ecumenical Movement.

*Jansen* First Semester 2 hours

24 HISTORY OF AMERICAN CHRISTIAN SOCIAL THOUGHT

The major trends of Christian social thought in America from the seventeenth century to the present.

*Jansen* Second Semester 2 hours

IVC10 DEVELOPMENT OF THE CURE OF SOULS\*

See description, under Psychology of Religion. (Offered in 1963-64 and alternate years).

\* May be credited in either department in which it appears.

## B. Christian Missions and History of Religions

Coan, Roosa

### 1 WORLD RELIGIONS

A survey of the chief living religions: their origins, history, teachings, significance for Christianity and the modern world.

*Roosa*

First Semester 4 hours

### 3M HISTORY OF CHRISTIAN MISSIONS

A rapid survey of the Christian missionary enterprise from its inception to the present time; a panoramic view of the world Christian community; and a consideration of the missionary obligation of the Christian Church. (Required of Middlers).

*Coan*

First Semester 2 hours

### 5 MISSIONARY BIOGRAPHY

A study of the personalities who have been the makers of mission work around the world. (Offered in 1963-64 and alternate years).

*Coan*

First Semester 2 hours

### 6 MISSIONARY EDUCATION IN THE LOCAL CHURCH

Materials, principles and methods for a comprehensive missionary program in the local church. (Offered in 1963-64 and alternate years).

*Coan*

Second Semester 2 hours

### 7 PRINCIPLES AND PRACTICES OF MISSIONS

A systematic study of the principles and practices of Christian missions with reference to the biblical foundations, the development of the Church and accumulated missionary experiences. (Offered in 1962-63 and alternate years).

*Coan*

First Semester 2 hours

### 10 WORLD CHRISTIANITY

A survey of contemporary church life in the principal countries of the world with a study of the present efforts at Protestant ecumenicity. (Offered in 1962-63 and alternate years).

*Coan*

Second Semester 2 hours

### 11 SACRED SCRIPTURES

A study of the origin, development, character, and basic

teachings of the major scriptures of the world, outside the Judaeo-Christian heritage; and their significance for Christian leaders in our age. (Offered in 1963-64 and alternate years).

*Roosa* First Semester 2 hours

12 CHRISTIANITY AT WORK IN AFRICA

A survey of the missionary work carried on in Africa by the churches and by independent missions in order to discover their effectiveness. (Offered in 1963-64 and alternate years).

*Coan* Second Semester 2 hours

14 SEMINAR: MISSIONARY PROBLEMS AND OPPORTUNITIES

Designed especially for those who may choose Africa as a field of labor. A study of the present political situation and the resultant problems the missionary must face. Also a consideration of the opportunities offered. (Offered in 1962-63 and alternate years).

*Coan* Second Semester 2 hours

### DIVISION III. THEOLOGICAL STUDIES

#### A. Philosophy

Richards, Watson

1,2J PHILOSOPHY AND RELIGION

As an orientation in the study of Christian theology, the fields and methods of theology are set in the background of a brief survey of philosophy. Basic problems of life and thought are raised and important answers reviewed. Special consideration is given to the relationship of philosophy to theology. (Required of Juniors).

*Richards* First Semester 2 hours; Second Semester 2 hours

3 SOCIAL ETHICS

A study of ethics as applied to specific social relations and issues in contemporary society.

*Watson* First Semester 4 hours

4 PRINCIPLES OF CHRISTIAN ETHICS

The principles of Christian ethics are studied by means of a critical review of various forms of moral philosophy and the

development of the evangelical basis for Christian attitudes and behavior. (Offered in 1963-64 and alternate years).  
*Richards* Second Semester 4 hours

5 SEMINAR: PHILOSOPHY OF RELIGION

Special topics for advanced study form the content of this course. Opportunity is provided for individual research. (Offered in 1962-63 and alternate years).  
*Watson* First Semester 2 hours

## B. Christian Theology

*Richards, Watson*

2 BIBLICAL THEOLOGY

By a doctrinal review of the Old and New Testaments, the content, criteria and methods of biblical theology are discussed. This approach emphasizes the primacy of revelation and response and is distinguished from a philosophical approach to Christian theology. (Offered in 1962-63 and alternate years).  
*Richards* Second Semester 4 hours

3,4M SYSTEMATIC THEOLOGY

All the important doctrines of Christianity are studied in an effort toward the clearest possible understanding of the Christian faith. (Required of Middlers).  
*Watson* First Semester 4 hours; Second Semester 2 hours

5 CHRISTOLOGY

The central doctrine of the incarnation and the person of Jesus Christ is treated in some detail. (Offered in 1963-64 and alternate years).  
*Richards* First Semester 2 hours

6 SIN AND SALVATION

An examination of the Christian doctrine of redemption; the nature of man, sin, divine sovereignty and grace; the personal character of repentance and forgiveness, justification and reconciliation. (Offered in 1962-63 and alternate years).  
*Watson* Second Semester 2 hours

7 THEOLOGY OF JOHN WESLEY

The distinctive doctrines of Wesleyan theology are con-

sidered in their historical setting and their present significance. (Required for membership in an annual conference of the Methodist Church). (Offered in 1963-64 and alternate years).  
*Richards* First Semester 2 hours

8 THEOLOGY OF THE REFORMATION

The distinctive doctrines of Protestantism are studied from the writings of the Reformers and with regard for their relevance for today. (Offered in 1963-64 and alternate years).  
*Watson* Second Semester 2 hours

9 SEMINAR: THEOLOGY

Special topics for advanced study form the content of this course. Opportunity is provided for individual research.  
First Semester 2 hours

10 CONTEMPORARY THEOLOGY

Modern movements and trends in theology are reviewed with special attention to developments in the ecumenical field. (Offered in 1962-63 and alternate years).  
*Richards* Second Semester 4 hours

12 THEOLOGY AND THE MINISTRY

The practical bearing of theology on the Christian ministry is considered with reference to preaching, evangelism, teaching, administration and pastoral care. (Offered in 1963-64 and alternate years).  
*Richards* Second Semester 2 hours

IIA3 HISTORY OF CHRISTIAN THOUGHT\*

(See description under Historical Studies).  
*Jansen* First Semester 4 hours

## DIVISION IV. PRACTICAL STUDIES

### A. Homiletics

Abernathy, Clark, Lantz, McEwen

2J PUBLIC SPEAKING

A study of the principles of public speaking together with opportunities to develop speaking skills. Fundamentals of effective communication will be stressed. Speeches and addresses on

---

\* May be credited in either department in which it appears.

topics related to the minister's work will be assigned. A recording of each student's voice will be made. (Alternate Junior requirement with IVA5J).

*Lantz*

Second Semester 2 hours

### 3M THE PREPARATION OF SERMONS

A course which deals primarily with a theoretical study of the preparation of sermons, including the philosophy of preaching, a comprehensive analysis of the formal elements of a sermon, resources for sermons, and a survey of different types of sermons. Practical experience in writing sermons will be involved throughout the course. Required of Middlers.

*Clark*

First Semester 2 hours

### 4M THE DELIVERY OF SERMONS

A course which deals primarily with practical experience in the delivery of sermons. Students will be assigned various types of homilies, and will be evaluated on the basis of established principles and practical effectiveness. Recording devices will be used to facilitate the effectiveness of this course. Required of Middlers.

*Clark*

Second Semester 2 hours

### 5J SPEAKING AND GROUP LEADERSHIP

A study of various aspects of speaking in the church and of relating them to group leadership. Fundamentals of both good speaking and effective leadership will be considered, including the art of presiding at meetings and a judicious use of parliamentary procedure. (Alternate Junior requirement with IVA2J. Offered in 1962-63 and alternate years).

*Lantz*

First Semester 2 hours

### 7 ORAL AND DRAMATIC INTERPRETATION OF SCRIPTURE

A study of the principles of oral interpretation as they apply to reading the Scriptures aloud. Stress will be placed upon understanding the Bible, selecting appropriate passages, getting ready to read, and presenting the reading itself. Special types of religious literature will also be considered. (Offered in 1963-64 and alternate years).

*Lantz*

First Semester 2 hours

### 8 TYPES OF PREACHING

A course emphasizing varieties of sermons for various occasions. Students will be evaluated on various sermons deliv-

ered. Recording devices will be used to effectuate this course.  
*Clark* Second Semester 2 hours

9 EXPOSITORY PREACHING

A course designed to emphasize the value of communicating the biblical message comprehensively, involving principles of biblical interpretation for expository preaching. Students will be assigned selected books and chapters for homiletical purposes, and will be evaluated in the light of established principles and practical effectiveness.

*Clark* First Semester 2 hours

10 THE USE OF LITERATURE IN PREACHING

A study of various types of literature a preacher can use to help him in his preaching. (Offered in 1962-63 and alternate years).

*Lantz* Second Semester 2 hours

11 PREACHING ON CONTEMPORARY ISSUES

A course designed to emphasize the relevance of the Christian Gospel to living issues, both social and psychological. Students will be assigned problems for homiletical purposes, and will be evaluated in the light of established principles and practical effectiveness.

*McEwen* First Semester 2 hours

12 CLASSICAL PREACHING IN HISTORY

A study of great sermons in Christian history, involving an analysis of the social and religious background of the sermons, a critical study of the content of the sermons, the motives and intentions of the preachers, and the evangelical effect of each.

*Clark* Second Semester 2 hours

13 THE MINISTER AS COMMUNICATOR

This course will center its focus primarily on the minister as a communicator. Attention will be given to the minister's role in working with mass communications media. Opportunity will be provided for working with audio-visual, recording and broadcasting equipment. Time spent in the course will be equally divided between the lectures and the laboratory work.

*Abernathy* First Semester 2 hours

14 ADVANCED RADIO METHODS

An advanced course concentrating on practice in the use of

radio for religious programs. Given at the E. Stanley Jones Institute.

Second Semester 2 hours

16 ADVANCED TELEVISION METHODS

An advanced course concentrating on practice in the use of television for religious programs. Given at E. Stanley Jones Institute.

Second Semester 2 hours

17 GRADUATE STUDY METHODS

This is primarily a course in English usage suitable for ministerial leadership. It includes improvement in grammar, punctuation, pronunciation and vocabulary and is required of all entering students who have failed to pass the standard English examination. (cf. Par. E, p. 23).

First Semester, (2) hours, non-credit

18 RELIGIOUS WRITING AND JOURNALISM

This course will be conducted in seminar fashion by having reports and discussions on advanced phases of communicative skills and disciplines. Each student will be expected to select an appropriate project and pursue it during the course. This project may be the writing of some discourse designed for publication. (Offered in 1963-64 and alternate years).

*Lantz*

Second Semester 2 hours

19 GUIDANCE IN PREACHING AND THESIS WRITING

A course involving guidance to seniors preparing sermons or essays for presentation.

*Clark*

First Semester 1 hour

## B. Parish Administration

Bowen, Carruth, Coan, Darnell, Richardson, Tobin, Williamson

1R CHURCH ADMINISTRATION

The art and science of planning and administering the program of the local church with special attention given to democratic procedures, the use of group dynamics in the development of Christian lay leadership, and the spiritual values involved in church administration. (Required of Seniors).

*Williamson*

First Semester 2 hours



6 CHURCH POLITY

- a. African Methodist Episcopal—*Coan*
- b. Baptist—*Tobin*
- c. Christian Methodist Episcopal—*Darnell*
- d. Methodist (Required for membership in an annual conference)—*Bowen*
- e. Other Denominations

Second Semester 2 hours

8 INTERDENOMINATIONAL PROGRAMS

A study of methods and programs of councils of churches, ministerial alliances and associations, larger parishes and group ministries. (Offered in 1962-63 and alternate years).

*Williamson*

Second Semester 2 hours

10 EVANGELISM

Modern methods of reaching the unchurched will be stressed in a workshop course with opportunities for field experience. (Offered in 1962-63 and alternate years).

*Carruth*

Second Semester 2 hours

11,12M SUPERVISED FIELD WORK

This course in field work is conducted under the supervision of the Division of Practical Studies. Students will be assigned field work responsibility. For B.D. Students.

First Semester 1 hour; Second Semester 1 hour

13R STUDIES IN MINISTERIAL LEADERSHIP

The course deals with techniques of leadership for ministers. Attention is given to such subjects as the elements of effective leadership and methods of self-analysis and self-improvement for leaders. The course also offers training in conducting group discussions and demonstrations, and in counseling as a leadership device. (Required of Seniors).

*Richardson*

First Semester 2 hours

15,16 FIELD WORK

Supervised field work and/or clinical training for S.T.M. candidates.

*Williamson*

First or Second Semester 2 hours

18 PRAYER AND EVANGELISM

An emphasis on a local church program of evangelism and

the prayer life movement.  
*Carruth*

Second Semester 2 hours

22 SEMINAR: PARISH ADMINISTRATION

Advanced study of selected problems in Parish Administration. Required of candidates for the S.T.M. degree in the Division of Practical Studies. Seniors may register for the course with the consent of the instructor.  
*Williamson*

Second Semester 2 hours

### C. Psychology and Pastoral Care

Pugh

1 PSYCHOLOGY OF RELIGION

A study of psychological approaches toward understanding the religious life. Explorations of the meaning of behavior in religious experience, human growth, personality structure, social relations, worship, vocational choice, mysticism, and mental health. Emphasis is on individual research and survey of past studies.  
*Pugh*

First Semester 3 hours

2M PASTORAL PSYCHOLOGY

Attention is given to major psychological contributions to pastoral work with people: individuals, families, and groups. Emphasis is upon theoretical insights, and practical applications. (Required of Middlers).  
*Pugh*

Second Semester 2 hours

3R PASTORAL COUNSELING

An examination of basic principles of counseling in relation to the religious worker's task. The application of these principles will be through a number of counseling interviews in verbatim reports submitted by each student, and which will be evaluated with a supervisor. (Required of Seniors).  
*Pugh*

First Semester 2 hours

5, 6 CLINICAL ORIENTATION IN PASTORAL CARE

This is a part-time course in theological education at the experiential level. It includes supervised pastoral experiences in clinical settings where opportunities are provided for applying principles of pastoral care in the context of a student's

relationships with persons in crisis situations. (Enrollment limited to six students per semester).‡

First & Second Semesters each, 2 hours

*Pugh and Chaplain Supervisor*

#### 5SS CLINICAL PASTORAL EDUCATION

A full-time, quarter (12-week session) of clinical training in the program of clinical training with The Council for Clinical Pastoral Training, Inc. Training may be obtained in a general hospital, mental health center, or correction institution across the country. Six students may be permitted to elect this training for the summer quarter. The training provides a laboratory experience in interpersonal relationships designed to develop adequacy in pastoral relationships with people.‡

#### 7 SEMINAR: GROUP DYNAMICS

A seminar in which participants learn the distinctive qualities of the group leader, member and observer. This will include techniques of studying groups and of developing group leadership. Multiple leadership and the dynamics of interpersonal relationships within the group will also be considered. (Registration must be approved by the instructor. Enrollment limited to twelve students).

*Pugh*

First Semester 2 hours

#### 8 PERSONALITY AND RELIGION

A dialectical consideration of the psychodynamics of personality as related to the needs and adjustment processes of man in social and religious relationships.

*Pugh*

Second Semester 2 hours

#### 10 DEVELOPMENT OF THE CURE OF SOULS\*

A study of the history of pastoral relations with people in need. Emphasis on a survey of past theories and approaches. (Offered in 1963-64 and alternate years).

*Pugh*

Second Semester 2 hours

#### 12 MEASUREMENT IN RELIGION

Application of psychological procedures, instruments and

---

‡Prerequisites: Consent of the Professor of Psychology and Pastoral Care and a representative of The Council for Clinical Pastoral Training.

A maximum of eight hours in Clinical Pastoral Education is permitted toward the B. D. degree.

\*May be credited in either department in which it appears.

insights to the work of the minister in organizing and interpreting religious data. Emphasis is on understanding and appreciation of the language of measurements and their meaning rather than the administration of measuring devices. (Offered 1962-63).

*Pugh*

Second Semester 2 hours

#### **D. Music and Worship**

Killingsworth

##### **1R HYMNOLOGY**

The development of Christian hymnody, with particular emphasis on the authors and historical settings of hymns down to the present day, the relation of music and worship, and program building. (Alternate with IVD3; offered in 1962-63 and alternate years).

*Killingsworth*

First Semester 2 hours

##### **3R CHURCH MUSIC**

A historical survey of church music, including hymns, anthems, and organ music; services of music for weddings, funerals, hymn festivals, and other special occasions; use of recordings as aids to appreciation of various types of church music. (Alternate with IVD1; offered in 1963-64 and alternate years).

*Killingsworth*

First Semester 2 hours

##### **2M WORSHIP**

A study of the nature, technique and conduct of public worship, with emphasis on the preparation and administration of services for various occasions.

*McEwen*

Second Semester 2 hours

##### **IVF12 WORSHIP IN THE CHURCH SCHOOL\***

(See description under Religious Education)

#### **E. Church and Society**

Kincheloe, Richardson, Williamson

##### **3M SOCIOLOGY OF RELIGION**

An application of the principles and methods of the social sciences to an understanding of religious life and institutions.

---

\* May be credited in either department in which it appears.

Consideration is given to the methods of observation and description of religion, human resources for religious life, the characteristics of religion, the growth and distribution of religious institutions; religion and culture; religion and social movement; the institutional nature of religion; and the relation of the church to the social order. (This course or IVE4M required for Middlers).

*Kincheloe*

First Semester 4 hours

4M CHURCH, COMMUNITY AND THE SOCIAL ORDER

An analysis of the meaning of community and the relation of the church to the community: rural, urban and suburban. The relation of the church to the several processes of living: family life, making a living, labor problems; the urban-rural conflict, social control and the problems of social disorganization; segregation and integration; education, health and welfare, recreation and the social nature of human association are studied. (This course or IVE3M required for Middlers).

*Kincheloe-Williamson*

Second Semester 4 hours

5 THE CHURCH AND HUMAN RELATIONS

In this course a critical study is made of contemporary social problems and of the part the church can play in their solution. Especial attention will be given to the race problem in America, and to the minister's role.

*Richardson*

First Semester 2 hours

7,8 CHURCH AND COMMUNITY ANALYSIS

An application of the methods of social research to specific church and community problems. Either semester may be taken for credit. Registration must be approved by the instructor. (Laboratory fee, \$3.00)

*Williamson*

First Semester 2 hrs.; Second Semester 2 hrs.

9 THE TOWN AND COUNTRY CHURCH

A study of the philosophy, nature and methods of church work in town and country communities under 10,000 population.

*Williamson*

First Semester 2 hours

10 URBAN CHURCH

This course embraces the impact of urbanization upon religious life. Urban trends, types of urban areas and of urban churches, church and urban renewal, and strategies for the urban church will be considered.

*Kincheloe*

Second Semester 2 hours

- 11 SOCIAL RECONSTRUCTION  
 A study of proposals for the improvement of human welfare, such as cooperatives, labor unions, industrial and rural development programs, civil rights, birth limitation, war prevention, and FAO technical aid and health programs. (Offered in 1962-63 and alternate years).  
*Williamson* First Semester 2 hours
- 12 SOCIAL WELFARE  
 A study of social welfare needs, programs, and methods of public and private agencies with special reference to the Church's responsibility. (Offered in 1963-64 and alternate years).  
*Williamson* Second Semester 2 hours
- 13 MARRIAGE AND THE FAMILY  
 A study of the family as the basic social unit, its changing functions, problems of marital adjustment, parent-child relationships, divorce, family organization and disorganization, and counseling with reference to the Church's responsibility. Wives of students may audit the course free of cost. (Offered in 1963-64 and alternate years).  
*Williamson* First Semester 2 hours
- 14 SEMINAR: SOCIOLOGY OF RELIGION  
 An advanced study of selected topics and scholarly works in the field of Sociology of Religion. The Sociology of Religion is a prerequisite. Required of candidates for the S.T.M. degree in the Division of Practical Studies.  
*Kincheloe* Second Semester 2 hours
- 15,16 DIRECTED STUDY IN TOWN AND COUNTRY CHURCH  
 Study and research on problems in town and country church work which are of special interest to the student.  
 First Semester 2-4 hours; Second Semester 2-4 hours  
*Williamson*
- 21 SEMINAR: METHODS OF SOCIAL RESEARCH  
 The theory and practice of social research as it relates to the work of the churches and community agencies. Required for the S.T.M. degree in the Division of Practical Studies; others may register by permission of the instructor.  
*Williamson* First Semester 2 hours
- 23 THE CHURCH AND REMEDIAL SOCIAL PROGRAMS  
 The development of church programs which are related to

the major social forces and conditions that are impinging upon them and their people. Efforts will be made to find positive and effective ways in which local churches and their ministers may relate themselves to these problems. Local ministers will be invited to state the problems found in their particular parishes.

*Kincheloe*

First Semester 2 hours

## **F. Religious Education**

Coan, George, Mrs. Lantz

### 2M INTRODUCTION TO RELIGIOUS EDUCATION

This is an orientation course in the educational task of the church. It seeks, in the first place, to bridge the gap between theological content and educational method; secondly, to interpret the essential roles of the pastor and the director in the teaching ministry of the church. Consideration will be given to the biblical foundations of Christian education and their theological implications for educational methodology. Brief introductions will be given to general objectives, organization, administration, materials and methods.

(Required for Middlers).

*Coan*

Second Semester 4 hours

### 4 CURRICULUM OF RELIGIOUS EDUCATION

This course will include the history of the curriculum, the theory of curriculum making, sources and kinds of teaching materials, standards of evaluation, and practice in curriculum making. (Required for M.R.E.)

*George*

Second Semester 2 hours

### 5 THE USE OF THE BIBLE IN RELIGIOUS EDUCATION

An analysis of biblical materials with special reference to their use in the curriculum for meeting the needs, interests and capacities of various age groups.

*George*

First Semester 2 hours

### 6 RELIGION IN HIGHER EDUCATION

This course will cover the following subjects: the function of religion in higher education, the relation of the Church to higher education in the United States, Christian understanding of the university, and work with students as a Christian ministry. Attention is also given to the work of the church on or near the college campus. (Offered in 1963-64 and alternate years).

*Mrs. Lantz*

Second Semester 2 hours

7 PROGRAM BUILDING FOR CHILDREN

This course is designed for directors, teachers, missionaries and ministers who direct their own religious education program. A study is made of materials, equipment and educational procedures of religious development of children from the nursery through the junior age level. (Required, M.R.E.).  
*George* First Semester 2 hours

8 PROGRAM BUILDING FOR ADOLESCENTS AND ADULTS

The discussion centers around specific areas of life and needs of youth and adults and the educational procedures for meeting these needs. Provision is made for concentration upon specific fields of interest such as college, rural, city and foreign, work with youth and adults. (Required for M.R.E.).  
*George* Second Semester 4 hours

9 LEADERSHIP TRAINING IN RELIGIOUS EDUCATION

This course aims to prepare students to become accredited instructors in the church's leadership training program and to supervise the development of religious education workers on the job. (Required for M.R.E.).  
*Coan* First Semester 4 hours

10 RELIGIOUS DRAMA

Stress in this course is placed upon the educational use of drama. Various forms and uses of drama in religious education are studied and practiced. Religious choral readings are prepared and presented. The course also introduces students to the history of the drama and to some of the great plays. Attention is given to the technique of play and pageant production, and the class produces one play. (Offered in 1962-63 and alternate years).

*Mrs. Lantz* Second Semester 2 hours

11 AUDIO-VISUAL MATERIALS

Methods of using educational motion pictures, slides, film strips and recordings will be presented, demonstrated and discussed. Opportunity will be given for operating equipment. Methods will relate to age groups and areas of use in religious education.

*George* First Semester 2 hours

12 WORSHIP IN THE CHURCH SCHOOL

This course will include a study of the nature, purpose and psychological aspects of worship for children and youth.



Students will be given experience in building and conducting special worship services for a graded church school. (Required for M.R.E.).

*George*

Second Semester 2 hours

13 STORY TELLING

This course acquaints the student with the general field of Christian stories and develops skill in selecting and telling them for age groups and for specific occasions. The student has actual practice in telling stories and builds a file of resources for all age groups in the program of the church. (Offered in 1962-63 and alternate years).

*Mrs. Lantz*

First Semester 2 hours

14 CAMPING AND LEISURE TIME ACTIVITIES

The course considers the place of leisure time activities in the church or church agency in attempting to meet community needs. Leisure time experiences are studied in relation to the program of religious education for children, youth and adults during the entire year. Camping under church direction is given special emphasis. (Offered in 1963-64 and alternate years).

*Mrs. Lantz*

First Semester 2 hours

15,16 FIELD WORK AND SUPERVISION

Field work provides an opportunity for important Christian service and the occasion for the student to develop skill while rendering that service. The academic training is made practical in field work activities. This work is pursued in churches or social agencies such as the YWCA and orphanages, according to the interest of the student. Each student has weekly conferences with the supervising professor for purposes of guided study. (Required for M.R.E.).

*Coan and George*

First and Second Semesters 1 or 2 hours

17,18 FIELD WORK AND SUPERVISION

A continuation of IVF15,16. (Required for M.R.E.).

*Coan and George*

First and Second Semesters 1 or 2 hours

## THE STUDENT REGISTER 1961 - 1962

### *Candidates for the S.T.M. Degree*

- \*BACKSTROM, HENRY HARDY ..... Atlanta, Georgia  
A.B., Clark College, 1943  
B.D., Gammon Theological Seminary, 1945
- DAVIS, EDSSEL MANUEL ..... Montevallo, Alabama  
A.B., Selma University, 1956  
B.D., I.T.C., 1960
- HAMILTON, CHARLES SPENCER ..... Augusta, Georgia  
A.B., Morehouse College, 1951  
B.D., Morehouse School of Religion, 1953
- HURLEY, JAMES ROBERT ..... Atlanta, Georgia  
A.B., Morris Brown College, 1936  
B.D., Turner Theological Seminary, 1949
- SMITH, ASHLEY ALEXANDER ..... Jamaica, West Indies  
Diploma, Union Theological College, 1954  
B.D., Lancaster Theological Seminary, 1961
- \*UPTON, MILTON LEON ..... New Orleans, Louisiana  
A.B., Knoxville College, 1950  
B.D., Gammon Theological Seminary, 1956
- WALLACE, FREDERICK DOUGLASS, JR. .... Atlanta, Georgia  
A.B., Morris Brown College, 1942  
B.D., Morehouse School of Religion, 1959

### *Unclassified Graduate Students*

- WILLIAMS, W. CLYDE ..... Atlanta, Georgia  
A.B., Paine College, 1955  
B.D., Howard University School of Religion, 1959  
M.R.E., I.T.C., 1961

### *Candidates for the B.D. Degree*

#### *Seniors*

- ALEXANDER, CAMERON MADISON ..... Atlanta, Georgia  
A.B., Morehouse College, 1959
- APPLEBERRY, CLIFTON EXPOSE ..... Tylertown, Mississippi  
A.B., Rust College, 1959
- BONAPARTE, LAWSON GREGG ..... Darlington, South Carolina  
B.S., South Carolina State College, 1942  
M.S., A & T College, Greensboro, 1955
- BUTLER, GRADY ..... Greenville, South Carolina  
B.S., Tuskegee Institute, 1959

\* Maintaining Matriculation only

CALLIER, SAMUEL HENRY ..... Bryan, Texas  
 A.B., Wiley College, 1959  
 CAREY, ABRAHAM RICHARD ..... Snow Hill, Maryland  
 A.B., Clark College, 1959  
 CONOWAY, MERLIN DEAN ..... Amory, Mississippi  
 B.S., Rust College, 1957  
 CRUMP, WILLIE BERNARD ..... Amory, Mississippi  
 B.S., Tuskegee Institute, 1960  
 DEAN, GENE ROBERT ..... Hogansville, Georgia  
 A.B., Paine College, 1959  
 DOUGLAS, JESSE LEE ..... New Orleans, Louisiana  
 A.B., Lane College, 1959  
 GATHERS, GEORGE ENOCH ..... New York, New York  
 A.B., Oakwood College, 1957  
 GEORGE, ULRIC ..... San Fernando, Trinidad, B.W.I.  
 A.B., Morris Brown College, 1959  
 HUTCHINS, JOSHUA ..... Huntingtown, Maryland  
 B.S., St. Paul's College, 1959  
 HUTCHINSON, CHARLES LESLEY ..... Attalla, Alabama  
 B.S., A & T College, Greensboro, 1958  
 JACKSON, VERDELLE ELDRIDGE ..... Cleveland, Mississippi  
 B.S., Mississippi Vocational College, 1957  
 JACOBS, DANIEL WESLEY ..... Cedartown, Georgia  
 A.B., Morris Brown College, 1955  
 JENKINS, CALVIN BROCKINGTON ..... Chattanooga, Tennessee  
 A.B., Claflin College, 1952  
 M.A., Columbia University, 1957  
 LIEDY, HUBERT BLAINE ..... Houston, Texas  
 A.B., Texas College, 1952  
 M.Ed., Texas Southern University, 1956  
 MCALLISTER, MARVIN CLARENCE ..... Effingham, South Carolina  
 B.S., Morris College, 1958  
 B.D., Morris College, 1961  
 MCIVER, WILLIAM HENRY ..... Atlanta, Georgia  
 A.B., Fisk University, 1932  
 MCPHERSON, THOMAS, JR. ..... Augusta, Georgia  
 A.B., Morris Brown College, 1959  
 MANIGO, GEORGE FRANKLIN, JR. ..... Bamberg, South Carolina  
 B.S., Claflin University, 1959  
 MARTIN, LAWRENCE RAYMOND ..... Archie, Louisiana  
 B.S., Grambling College, 1959  
 MAYS, WILLIE ..... Grambling, Louisiana  
 B.S., Grambling College, 1959

- PEARSON, JOHN CARSON ..... Bishopville, South Carolina  
A.B., Claflin University, 1959
- PRATT, THOMAS ALEXANDER ..... Huntsville, Alabama  
B.S., Alabama A & M College, 1957
- REGISTER, JASPER CALVIN ..... Valdosta, Georgia  
A.B., Morehouse College, 1959
- SIMMONS, DIMPSON WAYCROSS ..... McMinnville, Tennessee  
A.B., Lane College, 1959
- SMITH, WILLIAM TAYLOR ..... Memphis, Tennessee  
A.B., Lane College, 1959
- SWEETING, STAFFORD JAMES ..... Miami, Florida  
A.B., St. Augustine's College, 1959
- TALBERT, MELVIN GEORGE ..... Clinton, Louisiana  
A.B., Southern University, 1959
- TURNER, HERBERT MAURICE ..... Trenton, New Jersey  
B.S., Trenton State College, 1955
- WALKER, RICHARD, JR. ..... Birmingham, Alabama  
B.S., Tuskegee Institute, 1949
- WHITLEY, CLIFTON REIVE ..... Aberdeen, Mississippi  
B.S., Rust College, 1957
- WILKERSON, CLAYTON DUKE ..... Atlanta, Georgia  
A.B., Morris Brown College, 1959

*Middlers*

- BROWN, EDWARD LYNN ..... Jackson, Tennessee  
A.B., Lane College, 1960
- COOPER, ANDREW LLOYD ..... Evanston, Illinois  
A.B., Fisk University, 1960
- CREECY, HOWARD WILLIAM ..... Dothan, Alabama  
B.S., Alabama State College, 1950
- CURRY, MITCHELL L., JR. ..... Augusta, Georgia  
A.B., Morris Brown College, 1960
- DAVID, ARTHUR LACURTISS ..... Chicago, Illinois  
A.B., Lane College, 1960
- DELANEY, HENRY, JR. ..... Atlanta, Georgia  
A.B., Morris Brown College, 1957
- FELDER, ROBERT E. JONES ..... Galveston, Texas  
A.B., Clark College, 1959
- GRAVES, WILLIAM HENRY ..... Detroit, Michigan  
A.B., Lane College, 1960
- HUDSON, WILLIAM JAMES ..... Talladega, Alabama  
B.S., Alabama State College, 1957
- JACKSON, ELIJAH, JR. ..... Winston-Salem, North Carolina  
B.S., Tennessee State University, 1960

JOHNSON, SYLVESTER LEANCE ..... Collins, Mississippi  
 B.S., Mississippi Vocational College, 1958

LARKIN, WILLIAM CHARLES ..... Butler, Alabama  
 B.S., Alabama State College, 1960

MCMILLAN, MARION EARNEST ..... Dallas, Texas  
 A.B., Huston-Tillotson College, 1937

NORRIS, ALFRED LLOYD ..... Baton Rouge, Louisiana  
 A.B., Dillard University, 1960

PATTERSON, HARRY DURANT ..... Concord, North Carolina  
 B.S., North Carolina College, 1939

PLEASURE, MOSE, JR. .... Brunswick, Georgia  
 A.B., Dillard University, 1954  
 M.A., Harvard University, 1955

PURHAM, LOUIS THEODORE ..... Covington, Tennessee  
 A.B., Lane College, 1960

RICH, JAMES O. .... Anderson, South Carolina  
 A.B., Morris College, 1955

STENSON, MARSHELL, JR. .... LaGrange, Georgia  
 A.B., Clark College, 1961

TOLBERT, ROBERT JAMES ..... Newport, Arkansas  
 A.B., Philander Smith College, 1958

*Juniors*

ALLEN, JAMES STERLING ..... Little Rock, Arkansas  
 A.B., Arkansas Baptist College, 1961

ANDERSON, GEORGE LOTSY ..... Prichard, Alabama  
 B.S., Alabama State College, 1961

ANDERSON, JAMES ROOSEVELT ..... Dallas, Texas  
 B.S., Paul Quinn College, 1960

BROWN, ANDREW ..... Edna, Texas  
 A.B., Wiley College, 1961

BURTON, WILLIAM BERTRAM ..... Blevins, Arkansas  
 A.B., Philander Smith College, 1961

CHAMBERS, WILL EARL ..... Fulton, Kentucky  
 A.B., Paine College, 1961

CLARK, JUDGE RUEBEN ..... Pickens, South Carolina  
 B.S., Claflin University, 1961

DELL, ROOSEVELT, JR. .... Starke, Florida  
 A.B., Morris Brown College, 1961

EPPS, JOSEPH LOUIS ..... Dolomite, Alabama  
 B.S., Morehouse College, 1958

FIELDS, JAMES HENRY ..... Hampton, South Carolina  
 A.B., Claflin University, 1962

- FULTON, THOMAS AVON ..... Ocala, Florida  
 B.S., Bethune-Cookman College, 1951
- GORHAM, DAVID LIVINGSTONE ..... Atlanta, Georgia  
 A.B., Paine College, 1947
- GRIFFIN, BERTRAND ..... Alexandria, Louisiana  
 A.B., Dillard University, 1961
- GWINN, ANDREW OSBORNE ..... Atlanta, Georgia  
 B.S., Benedict College, 1961
- HAKHEEM, BERTY ..... Bareilly, U.P., India  
 G.Th., Leonard Theological College, 1959
- HARPER, WALTER FLOYD ..... Atlanta, Georgia  
 A.B., Morehouse College, 1950
- HAYES, ROBERT, JR. .... Chesterfield, South Carolina  
 B.S., Claflin College, 1950
- HINES, THOMAS EDWARD, JR. .... Grantville, Georgia  
 A.B., Clark College, 1961
- HOLT, OCIE, JR. .... Linden, New Jersey  
 A.B., North Carolina College, 1961
- JOHNSON, HAROLD ROLAND ..... Easley, South Carolina  
 B.S., South Carolina State College, 1947
- JONES, ROBERT EARL ..... New Orleans, Louisiana  
 A.B., Dillard University, 1961
- LYLES, GLENN LEE ..... Watertown, Tennessee  
 B.S., Tennessee State University, 1959
- MENCY, THORNTON LEANDER ..... Milledgeville, Georgia  
 B.S., Fort Valley State College, 1955
- MILES, JOEL LEONARD ..... Boswell, Oklahoma  
 A.B., Langston University, 1958
- MOODY, JAMES LUTHER ..... McLain, Mississippi  
 A.B., Rust College, 1961
- NORRIS, LESLIE PETER ..... Baton Rouge, Louisiana  
 A.B., Southern University, 1961
- ROSS, RALPH MCKINLEY ..... Miami, Florida  
 A.B., Knoxville College, 1961
- SAMPSON, ALBERT RICHARD ..... Everett, Massachusetts  
 A.B., Shaw University, 1961
- SMITH, NATHANIEL JAMES ..... Cusseta, Georgia  
 B.S., Tuskegee Institute, 1936
- SMITH, RUDOLPH ..... Atlanta, Georgia  
 A.B., Morris Brown College, 1961
- STAMPS, CONIE SEE, JR. .... Bronx, New York  
 B.S., Hampton Institute, 1956

STEWART, PAUL A. G. ----- Baldwin, Mississippi  
 A.B., Mississippi Industrial College, 1961

THOMAS, LONNIE JAMES ----- Orlando, Florida  
 A.B., Clark College, 1961

VARNER, SAMUEL LEE ----- Opelika, Alabama  
 A.B., Livingstone College, 1962

WATSON, GEORGE WILLIAM ----- Camden, South Carolina  
 B.A., Claflin University, 1961

### *Candidates for M.R.E. Degree*

#### FIRST YEAR

DAVIS, ENOCH DOUGLAS ----- St. Petersburg, Florida  
 A.B., Florida A & M University, 1951

DUNN, ALBERT LEE ----- Fort Worth, Texas  
 A.B., Paul Quinn College, 1960

MOORE, ANNA MARY ----- Bristol, Virginia  
 A.B., Fisk University, 1948

RICHMOND, ISSAC, JR. ----- Cordova, Tennessee  
 A.B., Lane College, 1961

SHERMAN, ALEXANDER ----- Attapulcus, Georgia  
 A.B., Florida A & M University, 1961

TAYLOR, MYRA LOUISE ----- Atlanta, Georgia  
 A.B., Spelman College, 1961

THOMAS, ROBERT FLETCHER, JR. ----- Atlanta, Georgia  
 A.B., Clark College, 1961

TUCKER, LYDIA MARIE ----- Atlanta, Georgia  
 A.B., Clark College, 1961

WILKES, WILLIAM R., JR. ----- Atlanta, Georgia  
 A.B., Clark College, 1952

#### SECOND YEAR

SPELL, LILLIE BELL ----- Palatka, Florida  
 A.B., Bethune-Cookman College, 1960

#### *Special Students*

ALLEN, RALPH MARION ----- Atlanta, Georgia  
 Morehouse College

MADDOX, VICTOR CARROL ----- Evansville, Indiana  
 Paine College

## REPORT OF REGISTRAR 1961 - 1962

### STUDENT ENROLLMENT

A.	Graduate Students .....	8
	First Semester .....	8
	Second Semester .....	3
B.	B.D. Candidates .....	91
	Seniors .....	35
	Middlers .....	21
	Juniors .....	35
C.	M.R.E. Candidates .....	10
	First Year .....	9
	Second Year .....	1
D.	Special Students .....	2
	Total Enrollment .....	111

### COLLEGE DISTRIBUTION OF STUDENTS

A & T College, Greensboro .....	1
Alabama A & M College .....	1
Alabama State College .....	4
Arkansas Baptist College .....	1
Benedict College .....	1
Bethune-Cookman College .....	2
Clafin College .....	7
Clark College .....	9
Dillard University .....	4
Fisk University .....	4
Florida A & M University .....	2
Fort Valley State College .....	1
Grambling College .....	2
Hampton Institute .....	1
Huston-Tillotson College .....	1
Knoxville College .....	2
Lane College .....	8
Langston University .....	1
Leonard Theological College (India) .....	1
Livingstone College .....	1
Mississippi Industrial College .....	1
Mississippi Vocational College .....	2
Morehouse College .....	6



Morris College .....	2
Morris Brown College .....	10
North Carolina College .....	2
Oakwood College .....	1
Paine College .....	5
Paul Quinn College .....	2
Philander Smith College .....	2
Rust College .....	4
St. Augustine's College .....	1
St. Paul's College .....	1
Selma University .....	1
Shaw University .....	1
South Carolina State College .....	2
Southern University .....	2
Spelman College .....	1
Tennessee State University .....	2
Texas College .....	1
Trenton State College .....	1
Tuskegee Institute .....	4
Union Theological College (Jamaica, BWI) .....	1
Wiley College .....	2

GEOGRAPHICAL DISTRIBUTION OF STUDENTS

Alabama .....	10
Arkansas .....	3
British West Indies .....	3
Florida .....	7
Georgia .....	29
Illinois .....	2
Indiana .....	1
Kentucky .....	1
Louisiana .....	9
Maryland .....	2
Massachusetts .....	1
Michigan .....	1
Mississippi .....	8
New Jersey .....	2
New York .....	2
North Carolina .....	2

Oklahoma .....	1
Shajahanpur, U.P., India .....	1
South Carolina .....	11
Tennessee .....	8
Texas .....	7
	<hr/>
	111

#### DENOMINATIONAL DISTRIBUTION OF STUDENTS

African Methodist Episcopal .....	14
African Methodist Episcopal Zion .....	2
African Orthodox .....	1
Baptist .....	27
Christian Methodist Episcopal .....	19
Church of God .....	1
Congregational .....	3
Holiness .....	2
Methodist .....	39
Non-Denominational .....	1
Presbyterian .....	1
Seventh Day Adventist .....	1
	<hr/>
	111

#### ENROLLMENT DISTRIBUTION BY SCHOOLS

Gammon Theological Seminary .....	43
Morehouse School of Religion .....	25
Phillips School of Theology .....	19
Turner Theological Seminary .....	14
Interdenominational Theological Center .....	10
	<hr/>
	111

#### COMPARATIVE ENROLLMENTS FOR THE ACADEMIC YEARS 1959-1962

	1959- 1960	1960- 1961	1961- 1962
A. Graduate Students .....	3	10	8
B. Candidates for B.D. degree			
1. Seniors .....	25	27	35
2. Middlers .....	21	30	21
3. Juniors .....	44	44	35

C. Candidates for M.R.E. degree .....	2	5	10
D. Special students .....	2	8	2
	<hr/>	<hr/>	<hr/>
Total Enrollment .....	97	124	111

#### DEGREES CONFERRED

A. Bachelor of Divinity .....	22	22	23
B. Master of Religious Education .....	1	3	1
C. Master of Sacred Theology .....	0	0	0
	<hr/>	<hr/>	<hr/>
Total Graduating .....	23	25	24

#### COMPARATIVE ENROLLMENT BY SCHOOLS 1959-1962

	1959- 1960	1960- 1961	1961- 1962
Gammon Theological Seminary .....	73	56	43
Morehouse School of Religion .....	10	33	26
Phillips School of Theology .....	10	19	19
Turner Theological Seminary .....	4	16	14
Interdenominational Theological Center .....	0	0	10
	<hr/>	<hr/>	<hr/>
	97	124	111

#### COMPARATIVE DENOMINATIONAL ENROLLMENT 1959-62

	1959- 1960	1960- 1961	1961- 1962
African Methodist Episcopal .....	8	18	14
African Methodist Episcopal Zion .....	3	3	2
African Orthodox .....	1	1	1
Baptist .....	23	37	37
Christian Methodist Episcopal .....	10	19	19
Church of God .....	0	0	1
Congregational .....	1	1	3
Episcopalian .....	1	0	0
Holiness .....	0	0	2
Methodist .....	50	44	39
Non-Denominational .....	0	0	1
Presbyterian .....	0	0	1
Seventh Day Adventist .....	1	1	1
	<hr/>	<hr/>	<hr/>
	97	124	111

## CLASS OF 1961

### BACHELOR OF DIVINITY

- |  |  |
|--|--|
| *JOHN M. ALEXANDER, JR.<br>B.S., Claflin University, 1958  | JULIUS CAESAR HOPE<br>B.S., Alabama State College, 1958                |
| BENJAMIN WELDON BICKERS<br>A.B., Morris Brown, 1951        | WILLARD MAURICE KING<br>B.S., Rust College, 1958                       |
| OSBERN BENNIE CLERK<br>A.B., Clark College, 1957           | LAWRENCE ALLEN MILLER<br>B.S., Alabama State College, 1958             |
| EDWARD ROBERT DAVIE<br>A.B., Morehouse College, 1958       | *STEPHEN TROWAN NAGBE<br>B.A.Th., Cuttington College, 1956             |
| CRAYTON THOMAS DUDLEY<br>A.B., Clark College, 1950         | SAMUEL EVANS NESMITH<br>A.B., Claflin University, 1958                 |
| JOHN FREDERICK EPPS<br>A.B., Morris Brown College, 1958    | ELISHA NORWOOD<br>B.S., Bethune-Cookman College, 1950                  |
| CARROLL MCCOY FELTON, JR.<br>A.B., Knoxville College, 1960 | BENJAMIN SMITH<br>B.S., Alabama State College, 1958                    |
| DOUGLASS EDWARD FITCH<br>A.B., Greenville College, 1958    | WATT T. WASHINGTON<br>B.S., Alabama A&M College, 1955                  |
| DEFARRIS GOODEN<br>A.B., Wiley College, 1958               | JOHN EDWARD WATTS<br>B.S., Alabama State College, 1958                 |
| WILLIS TIMOTHY GOODWIN<br>A.B., Claflin University, 1958   | WILLIAM HAWTHORNE WIGGINS, JR.<br>A.B., Ohio Wesleyan University, 1956 |
| EDWARD GALAHAD HINTON<br>A.B., Clark College, 1957         | JAMES ADAM WILBORN<br>A.B., Morehouse College, 1959                    |

---

\*Cum Laude

### MASTER OF RELIGIOUS EDUCATION

- |   |   |
|---|---|
| QUEEN ELIZABETH MAYS<br>B.S., Grambling College, 1959                               | CHARLES L. STOKES<br>A.B., Paine College, 1955<br>B.D., Gammon Seminary, 1958 |
| WILLIE CLYDE WILLIAMS<br>A.B., Paine College, 1955<br>B.D., Howard University, 1959 |   |

## AWARDS AND HONORS 1960-1961

International Society of Theta Phi

JOHN M. ALEXANDER  
MERLIN D. CONOWAY  
STEPHEN T. NAGBE

### *Interdenominational Theological Center*

Faculty Scholarship Award for B.D. Candidate .....Stephen T. Nagbe  
Faculty Scholarship Award to Outstanding  
Student in M.R.E. Program .....Queen Elizabeth Mays

### *Gammon Theological Seminary*

The Ada Stowell Waters Award .....Samual E. NeSmith  
The James S. and Emma E. Todd Award .....Willis T. Goodwin  
The Smith-Taylor Award .....Benjamin Smith  
The Frank W. Clelland Award .....Stephen T. Nagbe  
The Joseph W. Queen Award .....Elisha Norwood

### *Morehouse School of Religion*

The Mathalathian Award .....James A. Wilborn

### *Phillips School of Theology*

The Director's Award .....Willie Mays  
The Alumni Award .....William H. Wiggins, Jr.

### *Turner Theological Seminary*

The Turner Memorial Scholarship Award .....Harry D. Patterson

## CLASS OF 1962

### BACHELOR OF DIVINITY

- |  |   |
|--|---|
| GRADY BUTLER<br>B.S., Tuskegee Institute, 1959                       | THOMAS MCPHERSON, JR.<br>A.B., Morris Brown College, 1959     |
| ABRAHAM RICHARD CAREY<br>A.B., Clark College, 1959                   | GEORGE FRANKLIN MANIGO, JR.<br>B.S., Claflin University, 1959 |
| *MERLIN DEAN CONOWAY<br>B.S., Rust College, 1957                     | WILLIE MAYS<br>B.S., Grambling College, 1959                  |
| GENE ROBERT DEAN<br>A.B., Paine College, 1959                        | JOHN CARSON PEARSON<br>B.S., Claflin University, 1959         |
| JESSE LEE DOUGLAS<br>A.B., Lane College, 1959                        | JASPER CALVIN REGISTER<br>A.B., Morehouse College, 1959       |
| GEORGE ENOCH GATHERS<br>A.B., Oakwood College, 1957                  | WILLIAM TAYLOR SMITH<br>A.B., Lane College, 1959              |
| JOSHUA JAMES HUTCHINS, JR.<br>B.S., St. Paul's College, 1959         | MELVIN GEORGE TALBERT<br>A.B., Southern University, 1959      |
| CHARLES LESLIE HUTCHINSON<br>B.S., A & T, North Carolina, 1958       | HERBERT MAURICE TURNER<br>B.S., Trenton State College, 1955   |
| VERDELL ELDRIDGE JACKSON<br>B.S., Miss. Voc. College, 1958           | RICHARD WALKER, JR.<br>B.S., Tuskegee Institute, 1949         |
| DANIEL WESLEY JACOBS, SR.<br>A.B., Morris Brown College, 1955        | CLIFTON REIVE WHITLEY<br>B.S., Rust College, 1957             |
| HUBERT BLAINE LIEDY, JR.<br>B.A., Texas, 1952; M.Ed., TSU, 1956      | CLAYTON DUKE WILKERSON<br>A.B., Morris Brown College, 1958    |
| MARVIN CLARENCE McALLISTER<br>B.S., B.D., Morris College, 1958, 1961 |   |

---

\*Cum Laude

### MASTER OF RELIGIOUS EDUCATION

- LILLIE BELL SPELL  
A.B., Bethune-Cookman College, 1960

## AWARDS AND HONORS 1961-1962

### International Society of Theta Phi

JASPER C. REGISTER  
MELVIN G. TALBERT  
RICHARD WALKER, JR.

HARRY D. PATTERSON  
MOSE PLEASURE, JR.

JOSEPHUS R. COAN  
THOMAS J. PUGH

#### *Interdenominational Theological Center*

Faculty Scholarship Award .....Merlin D. Conoway  
American Bible Society Award .....Herbert M. Turner

#### *Gammon Theological Seminary*

The Frank W. Clelland Award .....Merlin D. Conoway  
The Joseph W. Queen Award .....Abraham Carey  
The Smith-Taylor Award .....Richard Walker, Jr.  
The James S. and Emma E. Todd Award .....Melvin G. Talbert  
The Ada S. Watters Award .....Joshua Hutchins

#### *Morehouse School of Religion*

The Mathalathian Award .....Jasper C. Register

#### *Phillips School of Theology*

The Alumni Award .....Will Earl Chambers  
The Director's Award .....Henry Delaney, Jr.

#### *Turner Theological Seminary*

Award for Highest Ranking Scholarship .....Harry D. Patterson





