

THE INTERDENOMINATIONAL
THEOLOGICAL CENTER



1979-80
CATALOG

ATLANTA UNIVERSITY CENTER
ATLANTA, GEORGIA

THE ITC OFFICE COMPLEX

671 Beckwith Street, S.W.
Atlanta, Georgia 30314

CHAPEL-AUDITORIUM

ADMINISTRATION BUILDING

President (522-1772)
Vice President for Academic Services (522-1742)
Vice President for Administrative Services (523-1314)
Controller (522-1741)
Director of Admissions and Registrar (522-1743)

CLASSROOM BUILDING

Director of Field Education (523-2258)
Director of External Programs (525-6827)
Director of The Religious Heritage of the Black World (525-5926, ext. 21)
Office of Pastoral Care and Counseling (525-7456)
Faculty Offices (525-5926)

LIBRARY BUILDING

Librarian (522-1744)
Faculty Offices (688-9284)

REFECTORY BUILDING

Dining Hall (524-7617)
President-Trustee Dining Room
Private Dining Room

APARTMENT BUILDING FOR MARRIED STUDENTS

PRESIDENT'S RESIDENCE (3360 Laren Lane, S.W. 30311 – 349-0642)

OFFICES OF CONSTITUENT SEMINARIES

Gammon Theological Seminary (524-2114)
Charles H. Mason Theological Seminary (525-0021)
Morehouse School of Religion (688-6743)
Phillips School of Theology (525-2741)
Johnson C. Smith Theological Seminary (524-1933)
Turner Theological Seminary (525-7802)

The Main Office of The I.T.C. is located at 671 Beckwith Street. Office Hours Monday-Friday, 9:00 A.M.–5:00 P.M., Telephone 525-5926.

OFFICE OF SUPERINTENDENT OF BUILDINGS AND GROUNDS
(522-2899)

THE INTERDENOMINATIONAL THEOLOGICAL CENTER

FULLY ACCREDITED BY THE ASSOCIATION OF
THEOLOGICAL SCHOOLS



Announcements

1979-1980



Member United Negro College Fund

VOLUME XIX

June, 1979

671 BECKWITH STREET, S.W., ATLANTA, GEORGIA 30314

THE
INTERDENOMINATIONAL
THEOLOGICAL CENTER

An Ecumenical Professional Graduate School of Theology
The Reverend Dr. Grant S. Shockley
President

CONSTITUENT SEMINARIES

Gammon Theological Seminary
(United Methodist)

The Reverend Dr. Major J. Jones, *Dean*

Charles H. Mason Theological Seminary
(Church of God in Christ)

The Reverend Mr. Oliver J. Haney, Jr., *Dean*

Morehouse School of Religion
(Baptist)

The Reverend Dr. Bobby Joe Saucer, *Dean*

Phillips School of Theology
(Christian Methodist Episcopal)

The Reverend Dr. Alvin L. Dopson, *Dean*

Johnson C. Smith Theological Seminary
(United Presbyterian)

The Reverend Dr. James H. Costen, *Dean*

Turner Theological Seminary
(African Methodist Episcopal)

The Reverend Dr. Clayton D. Wilkerson, *Dean*

TABLE OF CONTENTS

FOREWARD	2
I. ACADEMIC CALENDAR – 1979-1980	3
II. HISTORY OF THE ITC AND CONSTITUENT SEMINARIES.	7
III. NATURE, PURPOSE, OBJECTIVES	13
IV. RESOURCES.	15
V. ADMISSION, REGISTRATION AND CONTINUING STUDENT STATUS	19
VI. THE COST OF THE INTERDENOMINATIONAL THEOLOGICAL CENTER	27
VII. COMMUNITY LIFE	33
VIII. PROGRAMS OF STUDY	37
IX. COURSES OF STUDY.	53
X. STUDENT SERVICES.	79
XI. ADMINISTRATION	87
A. The Executive Staff	91
B. The Support Staff	91
XII. FACULTY, ALUMNI.	93
XIII. COMMENCEMENT 1978 AND ENROLLMENT STATISTICS	99
INDEX	118
JULIAN CALENDAR 1979, 1980, 1981.	119

FOREWARD

This is The Interdenominational Theological Center's catalog, Volume XIX. It succeeds Volume XVIII, published a year ago, June 1978. Volume XIX is new in many ways containing as it does new policies not published before, announcements and information relevant to the 1979-1980 school year.

The knowledgeable, experienced, critical and curious will find much of interest here.

T.J.P.

Atlanta, Georgia
June 15, 1979

Academic Calendar

The Interdenominational Theological Center Calendar
1979 - 1980

SUMMER SESSION

May -

10 Thursday Last day to accept applications to Summer Session

June -

11 Monday Registration
12 Tuesday Last day to register for credit and add new courses
13 Wednesday Summer classes begin
20 Wednesday Last day for students completing work in summer to
file candidacy for graduation

July -

4 Wednesday Independence Day holiday
16-19 Monday -
Wednesday Final Examinations
20 Friday Summer Session ends

FIRST SEMESTER

July -

30 Monday Deadline for accepting applications for processing
first semester admissions

August -

23 Thursday Faculty Council Meeting
20-21 Monday -
Tuesday Standing Committee meetings
22 Wednesday Orientation begins
24 Friday Registration of new students
27 Monday Registration of returning students
28 Tuesday Registration of returning students
29 Wednesday President's Reception
29 Wednesday Classes begin
30 Thursday Community Assembly
31 Friday Last day for adding courses

September —

3 Monday	Labor Day holiday
4 Tuesday	Classes resume
4 Tuesday	President's Chapel Hour
10 Monday	Faculty meeting
11 Tuesday	Academic Dean's Chapel Hour
12 Wednesday	Last day for removing incompletes
13 Wednesday	Seminary Dean's Council Chapel Hour
18 Tuesday	Student Christian League Chapel Hour
27 Thursday	Fall Convocation

October —

1 Monday	Deadline for graduation candidacy for completion of work in December
4 Thursday	Scholar-in-Residence
16 Tuesday	I.T.C. Secretarial Staff Chapel Hour
22-23 Monday - Tuesday	Mid-Term

November —

1 Thursday	Deadline for submission of Senior Essay and Project Topics to Dean of Faculty
5-14	Pre-registration for Second Semester
14 Wednesday	Deadline for accepting applications for second semester admissions
21 Wednesday	Thanksgiving Recess begins at end of scheduled classes
27 Tuesday	Classes resume
27 Tuesday	Gammon's Founder's Day
29 Thursday	Absalom Jones Institute Chapel Hour
30 Friday	Last day for processing applications for second semester

December —

4 Tuesday	Phillips' Founder's Day
6 Thursday	Christmas Musicale, I.T.C. Chorus
13 Thursday	Semester Examinations
20 Thursday	First Semester ceases

SECOND SEMESTER**January —**

3 Thursday	Residences open to all students
3 Thursday	Curriculum Committee meeting and Standing Committee meetings

3 Thursday	Faculty Council meeting
3 - 4	Orientation and Examinations for new students
7 Monday	Registration of new and returning students
8 Tuesday	Registration of returning students
9 Wednesday	Classes begin
10 Thursday	President's Chapel Hour
11 Friday	Last day for adding courses
15 Tuesday	Martin Luther King, Jr. birthday holiday
17 Thursday	Deadline for submission of first draft of Senior Essay and Project Reports to Advisors
17 Thursday	Academic Dean's Chapel Hour
22 Tuesday	Student Christian League Chapel Hour
23 Wednesday	Last day for removing incompletes
24 Thursday	Winter Convocation

February -

1 Friday	Last day to file candidacy for graduation in May
5 Tuesday	Turner Founder's Day
11-14 M-Th.	C.D. Hubert Lectures and Morehouse Founder's Day
21 Thursday	Thirkiel-Jones Lectures
26 Tuesday	Last day for officially withdrawing from a course
28 Thursday	Mason Founder's Day

March-

13 Thursday	I.T.C. Charter Day
13 Thursday	Scholar-in-Residence
13-14 Thursday - Friday	Conference On the Ministry
31 - April 3	Pre-registration for first semester 1980-81

April -

4 Friday	Easter Recess begins at end of classes
4 Friday	Last day for degree equivalency applications for summer and first semester
14 Monday	Easter Recess ends
15 Tuesday	Johnson C. Smith Founder's Day
17 Thursday	I.T.C. Drama Class and Chorus
18 Friday	Deadline for submitting Senior Essay and Project Reports to Dean of Faculty by Advisors
24 Thursday	I.T.C. Drama Class and Chorus
29 Tuesday	Senior Class Day

May -

1 Thursday -	
6 Tuesday	Final Examinations
9 Friday	Second Semester ends
11 Sunday	Commencement
11 Sunday	President's Reception

HISTORY



History

The Interdenominational Theological Center, one of the most significant projects in theological education in America, was chartered in 1958 through the mutual efforts of four schools of theology, representing four denominations. The schools in order of their chronology are:

1. Morehouse School of Religion

"In February, 1867, a school for the training of ministers and other church leaders was organized in the Springfield Baptist Church of Augusta, Georgia, under the sponsorship of the American Baptist Home Mission Society." This school was known as the Augusta Institute until its removal to Atlanta in 1879, whereupon it was renamed Atlanta Baptist Seminary. Twenty years later the Seminary was authorized to offer college work and the name was changed to Atlanta Baptist College. Theological students continued to outnumber liberal arts students until 1923-24.

In 1904 attention was turned to the Divinity School which, though related to the College, had its own instructors who offered the B.D. degree in addition to the B.Th. and the Diploma in Theology.

The name *Morehouse* was adopted in 1913 in honor of Dr. Henry L. Morehouse, Corresponding Secretary of the American Baptist Home Mission Society, and in 1924 the Divinity School of Morehouse College became known as the School of Religion. This change was accompanied by a reorganization of the curriculum, and Dr. Charles D. Hubert, who had been a professor in the Divinity School since 1914, became the first Director of the School of Religion of Morehouse College.

2. Gammon Theological Seminary

Gammon Theological Seminary was founded in 1883 by the Methodist Episcopal Church. Bishop Gilbert Haven and the officers of the Freedman's Aid Society had purchased nearly 500 acres of high land in the southern suburbs of Atlanta to which Clark University was moved in 1881.

A department of theology was established in Clark University in 1882, through the efforts of Bishop Henry White Warren, resident Bishop, and the gift of \$20,000 for endowment from the Rev. Elijah H. Gammon, a superannuated Methodist minister of the Rock River (Illinois) Conference. The enthusiasm and cooperation of these two men led to the erection of Gammon Hall which was dedicated on December 18, 1883. In June of that year the Rev. Wilbur Patterson Thirkield was elected Dean, and "Gammon School of Theology" was officially opened on October 3, 1883.

Within four years Mr. Gammon offered to give the school more liberal support on condition that it become independent of Clark University so that it might serve the entire Methodist Episcopal Church and all her colleges in

the South. In April 1887 the official connections between Gammon and Clark were dissolved, and in January 1888 Mr. Gammon added \$200,000 to the endowment fund. The School was granted a charter on March 24, and the name was officially changed to its present name on December 28 of that year. Dr. Thirkield was the first President.

3. Turner Theological Seminary

September 23, 1885, just before the doors of Morris Brown College were opened for the reception of students, the Rev. T. G. Steward, D.D., was elected Dean of Theology.

But it was not until 1894 that a Theological Department was formally opened with Dr. E. W. Lee as the dean. Twelve young men matriculated the first day and in three months twenty-four had enrolled.

On June 19, 1900, the Executive Board, by unanimous vote, changed the name from the Theological Department of Morris Brown University to Turner Theological Seminary in honor of Bishop H. M. Turner who had been influential in the development of the school from the beginning.

In the fall of 1957 Turner Theological Seminary moved into its own building apart from the College where it maintained lecture and conference rooms, offices, library and a student lounge.

4. Phillips School of Theology

In May of 1944, the Board of Trustees of Lane College passed a resolution in which it recommended the establishment of a separate seminary at Lane College. The recommendation was referred to the Annual Conferences concerned. In the fall of 1944 Lane College's supporting annual conferences approved the establishment of a seminary and elected trustees of the proposed institution.

The Seminary began operation under the name of Phillips School of Theology at Lane College with the winter quarter of 1944-45, offering the Bachelor of Divinity degree on the graduate level and the Bachelor of Theology for undergraduate students. The 1946 General Conference of the C.M.E. Church gave the Seminary connectional status.

More recently three other institutions have joined the Center. They are:

1. Johnson C. Smith Seminary, Inc.

The Johnson C. Smith Seminary was established April 7, 1867, as one of the departments of the Biddle Memorial Institute in Charlotte, North Carolina. In 1923 Mrs. Jane Berry Smith of Pittsburgh, Pennsylvania, generously endowed the institution and constructed several buildings on the seventy-five-acre campus in honor of her husband, Johnson C. Smith. In recognition of this benefaction, the Board of Trustees voted on March 1, 1923, to change the name of the institution to Johnson C. Smith University.

The Seminary moved to Atlanta, Georgia, during the school year 1969-70 on an interim basis. Official action of the University Board of Trustees and the One Hundred Eighty-Second General Assembly of the United Presbyterian Church was taken in May of 1970 and the Seminary became one of the constituent schools of the Interdenominational Theological Center.

2. Charles H. Mason Theological Seminary

The Charles H. Mason Theological Seminary was founded March, 1970, upon approval by the trustees of I.T.C. and opened officially, September, 1970. Initial plans for the Seminary were begun in 1969 through the leadership of Presiding Bishop J. O. Patterson. Detailed planning was finalized by Bishop D. A. Burton, General Secretary, and Elder Roy Winbush, President of the Church of God in Christ Publishing House.

The Seminary was named in honor of the founder of the Church of God in Christ, Apostle and Prophetic Preacher to our generation, the late Bishop Charles Harrison Mason.

Mason Seminary is hailed as the first Black accredited Pentecostal Seminary in America.

3. Absalom Jones Theological Institute

The Absalom Jones Theological Institute became a part of the Interdenominational Theological Center following the unanimous endorsement of the Episcopal Church's Board for Theological Education and Seminary Deans of March 30, 1971, of the proposal for affiliation as submitted by the Reverend Robert A. Bennett for the Directors of the Union of Black Episcopalians.

The Institute is named to honor the first Black American ordained a priest in the Episcopal Church and in 1787 established St. Thomas Episcopal Church in Philadelphia, the first Black Episcopal congregation.

In addition to direct affiliation with the member denominations, The I.T.C. is officially recognized by the United Church of Christ as a related seminary.

The Center was greatly helped by some magnificent grants from philanthropic foundations, especially the Sealantic Fund and the General Education Board. The I.T.C. has been accredited by the Association of Theological Schools since 1960.

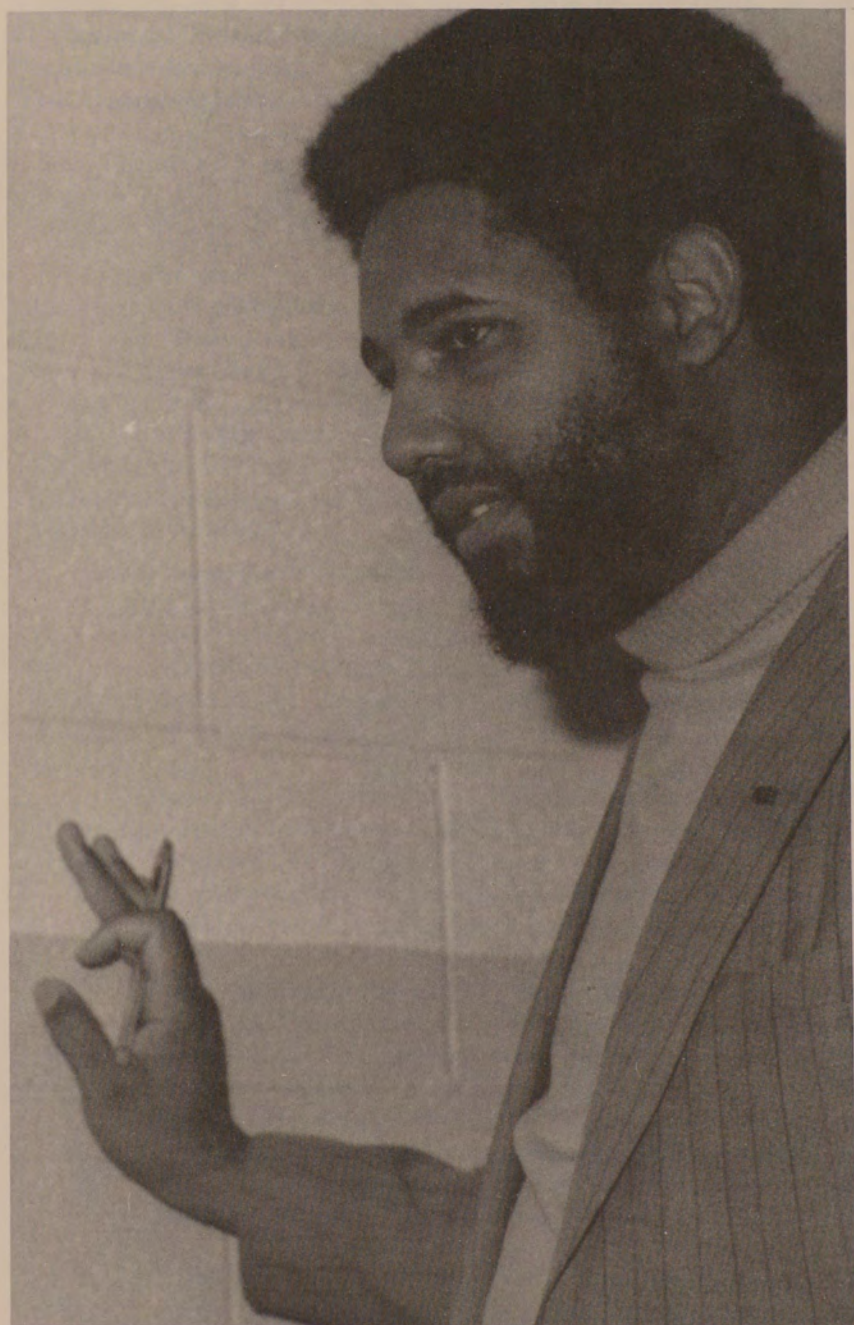
Faculty members have been chosen both for scholarly competence and for teaching ability. They constitute an outstanding group among the seminaries of the nation. The faculty-student ratio is favorable, thus insuring individual attention and small classes with opportunity for flexibility in instruction.

The I.T.C. is located on a ten acre plot in the heart of the Atlanta University Center. The site is the generous gift of Atlanta University. The buildings and all other facilities are modern, providing every resource for effective instruction and comfortable living.

The Center is under the direction of a forty-four member Board of

Trustees. Thirty-two of these trustees come from the seven participating schools. The remaining twelve are members-at-large chosen without regard to denominational affiliation. The Trustees employ the faculty and administration, set the policies, and manage the physical and financial resources of the Center.

Dr. Harry V. Richardson served as the first President of The Interdenominational Theological Center from 1959 to 1968; Dr. Oswald P. Bronson served as President from 1968 to 1975. Dr. Grant S. Shockley became President in January of 1976.



NATURE, PURPOSE, OBJECTIVES



Nature, Purpose, Objectives

NATURE

The Interdenominational Theological Center is a cooperative venture in theological education with commitment to God as revealed in Jesus Christ and to the Christian Church as Christ's Living Body. It is presently sponsored by six denominations to which it has primary responsibility and loyalty.

Through its interracial and international as well as its interdenominational character, the Center fosters an atmosphere of ecumenical fellowship. The Center is fully accredited by the Association of Theological Schools, and is actively related to the larger academic community in theological education. In addition, it is an integral part of the Atlanta University Center and participates in programs of higher learning with other institutions in the Atlanta area.

PURPOSE

Over the past decade, the Center has confirmed the appropriateness of its unique venture in interdenominational theological education, a uniqueness that makes it the primary locus of black theological education in America. The Center, at this particular juncture in its historical existence, proclaims its intent to pursue the entire course of theological education from the perspective of the Christian faith as this faith has been expressed in the black witnessing community.

That the Christian perspective of this black witnessing community should be affirmed at the Center is viewed as a matter of dire historical and existential necessity to enable the Church in its struggle for the liberation of oppressed people and for the reconciliation of all people.

Consciously affirming the Gospel of Jesus Christ, the Center now seeks to explore the theological dimensions of the motifs of liberation and reconciliation in their ultimate depth, and to prepare Christian ministers and teachers to speak from, and act in, that light.

OBJECTIVES

Some of the major objectives that the Center seeks to accomplish are:

1. To orient persons to the significance of the total program of theological education for ministry;
2. To increase knowledge of the Christian faith and competence in ministry;
3. To enhance understanding of the relevance of the Christian faith for ministry in the contemporary world;
4. To become cognizant of the academic worth of the black experience and the needs of the black witnessing community.

RESOURCES



Resources

THE LIBRARY

The I.T.C. Library contains over seventy-four thousand volumes. The initial collection was the Gilbert Haven Memorial Library of Gammon, with contributions from the other schools. Since the formation of the Center, the book collection has been augmented through grants from the following: the General Education Board, the Library Development Program of the American Theological Library Association, and the Kellogg Foundation. There has been a significant gain in the development of the periodicals collection which provides greater opportunity for research in the black church and general theological studies. An attempt is being made to acquire all material possible which will complement the material now available on the black church. A microfilm center has been started which includes the latest in microfilm equipment. Much of the material on microfilm is from the Schomburg Collection of the New York Public Library. This was made possible through a grant from the Minnesota Mining and Manufacturing Company and the Hill Family Foundation.

The I.T.C. Library is one of 28 participating members in the Union Library Catalogue of the Atlanta-Athens area. The Catalogue is housed in the Library Building of Emory University. Thus students have access to the finest materials available in the major libraries of the area.

LOCATION

The Center's location in Atlanta offers many advantages. The black community of Atlanta is one of the most progressive in the nation with abundant commercial establishments, industries, and professional services. The churches of the city with their social service programs, the welfare agencies, hospitals, and penological institutions all provide a laboratory for the student preparing for the Christian ministry. Atlanta is easily accessible by all forms of transportation and is the hub of Georgia's Interstate highway system. Its airport is one of the busiest in the nation.

INSTITUTIONAL AFFILIATIONS

Atlanta is a major educational center. Six institutions of higher learning in the city are federated in the Atlanta University Center: Atlanta University, Clark College, The I.T.C., Morehouse College, Morris Brown College, and Spelman College. The Atlanta University Center Corporation has greatly increased cooperation among the schools and is providing expanded educational opportunities in which The I.T.C. shares.

The I.T.C. maintains close cooperation with the Candler School of Theology in Emory University, Columbia Theological Seminary in Decatur, and Erskine Theological Seminary in Due West, South Carolina. Students in any one of these schools may take courses in the other without extra cost.

Arrangements to take courses on this exchange basis must be made with the Vice President for Academic Services in The I.T.C.

The Interdenominational Theological Center cooperates more specifically with the Atlanta University School of Social Work, the Atlanta University School of Education and with Georgia State University in the offering of dual competency degrees.

ATLANTA THEOLOGICAL ASSOCIATION

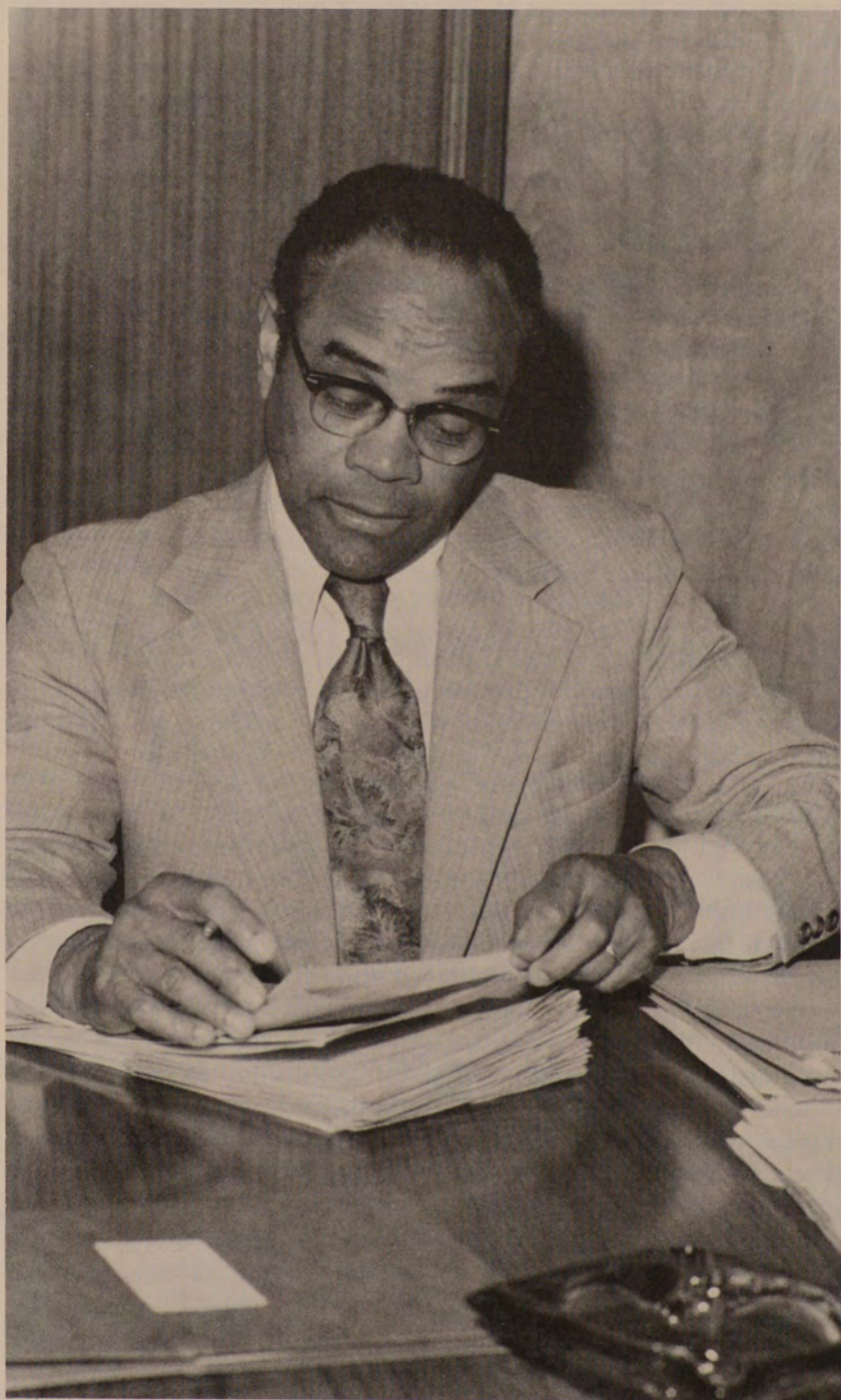
Through the Atlanta Theological Association, The Interdenominational Theological Center enjoys academic and professional affiliations with Candler School of Theology, Columbia Theological Seminary, Erskine Theological Seminary, Georgia Association for Pastoral Care, the Urban Training Organization of Atlanta and the Hinton Rural Life Center. Among significant promising cooperative endeavors are cross-registration, sharing of faculty, library and lectureship in resources, inter-seminary courses, and experimental programs in various academic disciplines and professional specializations. Among these significant cooperative endeavors are the Doctor of Ministry and Doctor of Sacred Theology degree programs.

THE GEORGIA ASSOCIATION FOR PASTORAL CARE, INC.

This Association is a joint endeavor of Candler School of Theology and the School of Medicine of Emory University, Columbia Theological Seminary, The Interdenominational Theological Center, and the Greater Atlanta Council of Churches. The purpose of the Association as stated in its charter is to "bring the pastoral concerns of the Christian community for the sick in body and spirit, the distressed, the deprived, and the socially outcast, together with the growing emphasis in theological education on clinical pastoral education."

The Association sponsors clinical pastoral training programs at Grady Memorial Hospital and Wesley Woods Health Center, at both introductory and advanced levels. (CPE is obtained in other service centers as needed.) This is experiential theological education under the skilled guidance of accredited supervisors. It provides theological students and practicing clergypersons opportunities for intensive study of pastoral relationships in a way to clarify personal understanding, improve pastoral skills and make operational the courage to be oneself in the practice of ministry. The learner is assisted in getting in touch with the resources, methods, and meanings of the Christian gospel in application to persons in their need.

Pastoral counseling services are administered at each of the participating seminaries under the supervision of the GAPC Pastoral Counseling and Referral Service Director. At I.T.C. marital and pastoral counseling are available by appointment to students, their wives, families and other people in the Atlanta University Center and the larger community for a fee on a graduated scale.



Grant S. Shockley, President

ADMISSION, REGISTRATION
AND CONTINUING STUDENT STATUS



Admission, Registration and Continuing Student Status

The Center is open to qualified men and women who are endorsed by their respective denomination and meet the qualifications of The I.T.C. Applications from non-Christians are also considered.

Admission of students to the Center is for them to apply to his or her denominational school for sponsorship and recommendation to officers of the Center. Prospective students who do not belong to one of the participating Denominations should apply directly to The I.T.C.

Persons seeking admission should secure an application from the Registrar of the Center and return the official form with a \$10.00 non-refundable fee addressed to: The Registrar, The Interdenominational Theological Center, 671 Beckwith Street, S.W., Atlanta, Georgia 30314.

A. REGULAR ADMISSION

1. Submit evidence of an A.B. degree or its equivalent from an accredited institution.
2. An official transcript of all college, university, or seminary records showing all courses pursued, the grades received, and the degree earned, must be sent by the issuing institution directly to the Registrar.
3. A certificate from a major official of the applicant's denomination (e.g., bishop, president, or registrar of annual conference, presbytery, or association) indicating that the applicant is an acceptable candidate for service in the denomination and that admission to The I.T.C. is approved.
4. A transfer student must present a letter of honorable withdrawal and a transcript.
5. Students who have been admitted will be given a battery of tests and measurements which includes an English proficiency examination. Students found deficient in English will be required to take MIN700-Communication.
6. Applicants applying under degree equivalency must indicate on application forms that they do not have an earned Baccalaureate degree.

Applicants, even those from accredited colleges, found seriously deficient in pre-seminary studies, may be required to make up such deficiencies in ways designated by the faculty. Courses taken to remove such deficiencies will carry no credit toward the semester credits required for graduation.

B. SPECIAL UNDERGRADUATE ADMISSION

An applicant, who lacks not more than six (6) hours of completing his or her college degree, may be admitted as a special student. The applicant must

furnish an official statement from the dean of the college, indicating the specific requirements to be met to qualify for graduation and certifying an approved program for completion of these requirements before the beginning of the next academic year. If the college degree is not conferred by the end of the first year, the applicant will not be permitted to continue seminary studies. The course load, including college work, shall not exceed the maximum load for entering Juniors.

Non-Credit Study – Auditors

Persons who do not qualify academically for admission to a degree program, or who though qualified do not wish to enroll in a course for credit, may be admitted as auditors to some classes with special permission and upon payment of designated fees. Such persons must have approval by a denominational Dean of one of the affiliated Seminaries or by The I.T.C. Dean in charge of non-affiliated denominational students. They may be admitted to any one of the following categories:

1. Theological Inquirers with qualifications normally required;
2. Theological Inquirers without qualifications normally required;
3. Persons who need exposure to theological education in order to serve in certain denominational capacities and who are recommended by their respective denomination.

Grades are not to be reported, nor in any instance may credit be granted for work taken by audit.

REGISTRATION

Registration should be made on the day announced in the calendar. A course may not be entered after the first week except with the approval of the Vice President for Academic Services and the instructor concerned.

Changes in registration must be made with the Registrar within the first week of the semester and after the student has secured the approval of the instructors concerned and the Vice President for Academic Services.

Registration in a course is usually for credit, but a student, with the consent of the instructor, may register as an auditor.

Credit cannot be earned in a course unless the student has registered for credit in the regular way.

Courses in other Atlanta University Center schools for which credit is desired must have prior approval of the Faculty, after recommendation by the particular Field in which a given course may be regarded as suitable. Experiences outside the published curriculum may receive credit – provided that upon recommendation of a given Field the Faculty grants *prior* approval.

Where a transcript indicates that a student has had certain courses that are parallel to I.T.C. required courses (Core), the student may request to have an examination in such area(s), and upon the successful completion of such examination(s) the student is exempted from that course(s) and he or she

may be permitted to take advanced courses and in so doing meet field requirements. It is to be noted that no credit will be given for courses from which the student has been exempted. The student's I.T.C. transcript shall indicate those courses from which the student has been exempted by examination.

Withdrawals. A student is enrolled in a course after having registered for it, unless and until withdrawal from it according to procedure as stated in the *Catalog*. Privilege to withdraw from a course is the student's until the date stated; after this date further privilege may be granted for Providential reasons as stated. Instructors are required to report an earned grade for each student who does not withdraw officially, keeping in mind attendance requirements.

A student may withdraw from the *institution* at any time, and records are to indicate such withdrawal including the date. Anyone who does so withdraw must submit an application for readmission and pay the application fee.

Regular and Summer Sessions

The academic year includes two semesters of sixteen weeks each. There is also a summer session of six weeks.

Regular Sessions

The unit of credit is the semester credit. Twelve semester credits are the minimum and fifteen the maximum for the regular student. Anyone who has been admitted as a regular student with an A.B. or equivalent degree from an accredited college will be limited to fifteen credits during the first semester of study, seventeen credits thereafter. However, a student may be permitted to register for sixteen or seventeen credits provided that a cumulative average of at least B has been achieved and that the Vice President for Academic Services grants special permission. Students taking more than 15 credits are charged the tuition rate for them.

A student who has been admitted as a regular student with an A.B. or equivalent degree from an unaccredited college will be limited to twelve credits during the first semester of study unless his cumulative average is 3.0 or above on a four-point scale; 2.5 or above on a three-point scale. In the latter instance the student may be permitted to register for fifteen credits.

Summer Session

Conditions that obtain in regard to the Summer Session are the same as those in effect for the Regular Semester Session except in the matter of credits for which one may register, the frequency of class sessions, making changes in registration, and time for withdrawal from courses.

For further information, write to Dr. Isaac R. Clark, Acting Director of the Summer Session.

Attendance

All Juniors are required to attend class sessions, without exception. Class attendance is required also for all Middlers and Seniors, except those on the current Honor Roll and Dean's List. Individual professors may require full attendance of all students in special classes such as seminars.

Regular attendance is expected at chapel.

Classification and Definitions

Junior: Candidates for either the M.Div. or the M.R.E. degree with fewer than 28 credits and 56 quality points.

Middler: Candidates for the M.Div. degree who have completed 28 semester credits with 56 quality points.

Senior: Candidates for the M.Div. degree who have completed 58 credits with 116 quality points including all first-year required courses; and candidates for the M.R.E. degree who have completed 30 semester credits with 60 quality points.

Graduate: Candidates for the S.T.D. or D.Min. degree.

Regular: Students who have met all academic requirements for admission; and who are enrolled for 12 or more semester credits toward a degree.

Part-Time: Students regularly enrolled for fewer than 12 credits toward a degree.

Exchange: Students enrolled in The I.T.C. and taking courses elsewhere for credit here; and those taking courses here for credit elsewhere.

Special: Those who are enrolled in courses for credit toward a degree but have not qualified for full admission because of incomplete undergraduate work. Persons who have completed basic degree programs and are doing work for additional academic credit.

Auditor: Anyone permitted to attend a course without credit or grade.

Dean's List: A student whose performance at the end of a semester is 3.50-4.00.

Honor Roll: A student whose performance at the end of a semester is 3.00-3.49.

A student's classification may change in mid-year. All classification lists must conform to the Registrar's records.

Standards

At the close of each semester, each instructor reports the grades of each student in his classes to the Registrar. The grades are permanent.

Grades are awarded as follows: A, Excellent, 90-100; B, Good, 80-89; C,

Fair, 70-79; D, Poor, 60-69; F, Complete Failure; I, Incomplete; W., Withdrawn.

Quality points are reckoned as follows: A-4; B-3; C-2; D-1; F-0; I-0; Withdrawn-None.

Grade Point Averages are computed by dividing the total credits for which a student is officially enrolled into the total number of quality points earned each semester.

Not more than 15 semester credits of the total 90 for the M.Div. degree or 10 semester credits of the 60 required for the M.R.E. degree may be of D grade. A grade of D can be changed only by repeating the course.

All courses are to be completed within the period during which they are offered and for which the student is registered. However, for Providential reasons, and at the discretion of the instructor, *a student who is not on probation* may request and be granted an incomplete grade for the course. Work for the removal of such a grade must be submitted within *the first two weeks* of the succeeding period of enrollment, semester or summer session. Any variance from this policy must be recommended by the instructor and approved by the Academic Dean.

Probation, with load limited to 12 semester credits during a regular semester, six during the summer session, is automatic when a student's cumulative average is below C. It may be imposed by the Curriculum Committee when a student's average for a given semester or summer session is below C.

Any student whose performance at the end of the first year is below a cumulative average of D will be dismissed.

Any student whose performance at the end of the second or middler year is between the cumulative average of 1.00 and 1.99 or less than C will be dismissed.

Christian character is as much a part of a minister's equipment as his/her ability to preach or his/her academic training. Graduation from the Center will depend upon character as well as academic excellence. A student may be asked to withdraw from the Center whenever his/her conduct is unbecoming a candidate for Christian leadership.

Additional Provisions

A student transferring from another accredited seminary must complete at least the last 30 semester credits at the Center.

Courses in denominational history, polity, and doctrine are required by the constituent denominations. For students in the S.T.D. and D.Min. programs, such courses are regarded as preliminary.

In order to continue as a candidate for a degree, a student who is not enrolled for courses must pay the semester maintaining matriculation fee required by the Center.

Degrees will be granted *in absentia* only upon formal application and approval of the Vice President for Academic Services.



THE COST AT THE INTERDENOMINATIONAL THEOLOGICAL CENTER

THE COST AT THE INTERDENOMINATIONAL THEOLOGICAL CENTER

The Interdenominational Theological Center is aware that the cost of an education is a major expense for a family, and it makes every effort to keep its charges as reasonable as it can without sacrificing the quality of its program.

The tuition and other fees paid by the students cover only a small portion of The I.T.C.'s total operating budget. The balance is received in the form of gifts from friends and foundations. A major portion of the budget is affiliation fees paid by constituent seminaries. The Center has an endowment which has been invested for the purpose of earning income. This income is also applied toward the operating cost of The I.T.C.

STUDENT EXPENSES AT THE I.T.C.

Student expenses at The Interdenominational Theological Center are moderate. Students pay only a portion of the entire cost of their education. All students enrolled in constituent seminaries receive a tuition remission of \$550.00 per year. *Tuition and fees are subject to change annually.*

	Basic Expenses		
	Fall Semester	Spring Semester	School Year
*+Tuition (constituent)	675.00	675.00	1,350.00
*Tuition (nonconstituent)	1,000.00	1,000.00	2,000.00
Board	400.00	400.00	800.00
**Room (dormitory)			
Single	200.00	200.00	400.00
Double	150.00	150.00	300.00
Housing			
Efficiency (Utilities included)	320.00	320.00	640.00
One bedroom (Utilities not included)	270.00	270.00	540.00
2 bedroom trailer (utilities not included)	350.00	350.00	700.00
3 bedroom trailer (utilities not included)	400.00	400.00	800.00
Registration Fee	10.00	10.00	20.00
Library Fee	5.00	5.00	10.00

*Tuition covers the cost for the degree seeking student who carries a schedule of 12 to 15 semester credits, the student enrolled for fewer than 12 credits pays tuition at the rate of \$70.00 per semester credits; a student taking more than 15 credits pays \$70.00 for each additional credit.

+See "special note" pages 47, 48, 49 for expenses in dual degree programs and page 47 for expenses in D Min. and S.T.D. programs

**Dormitories are operated by member seminaries and fees are paid to the operator.

The registration of a student signifies the assumption of definitive obligation between student, constituent seminary and The I.T.C. It is an agreement by all parties to fulfill the terms of the registration contract. All outstanding bills and current charges for The I.T.C. are payable in full at the beginning of each semester. However, a 50 percent partial payment plan is available for current charges provided their application for credit is approved by the Controller. *All old charges (unpaid bills) must be paid in full before registering for the following semester or summer session.*

Under the partial payment plan students will be required to pay at least 50 percent of their total semester school charges at registration. The remaining balance will be required before final examination permits are issued.

NO EXCEPTIONS TO THIS POLICY WILL BE PERMITTED

A STUDENT WILL NOT BE ALLOWED TO REGISTER FOR ANOTHER SEMESTER, WILL NOT BE GRANTED A DIPLOMA OR CERTIFICATE; NOR WILL HE/SHE BE FURNISHED A TRANSCRIPT OF RECORD FOR ANY PURPOSE UNTIL SETTLEMENT OF HER/HIS FINANCIAL OBLIGATIONS.

ADDITIONAL FEES (Course Fees)

Pastoral Care	
Min – 728	75.00
Min – 735	250.00
Urban Training Clinical	
Field Education	150.00
ATA Course	
ATA – 003	150.00

OTHER FEES

Application Fee – (Non credit basis) a fee of \$10.00 is paid by each applicant for admission. This covers part of the cost of processing the application.

Auditing Fee – (Non credit basis) a fee of \$60.00 per semester credit is charged a person who wishes to audit a course.

Change in course fee – The student making a change in course schedule after the designated period pays a fee of \$5.00.

Graduation Fee – Each candidate for a degree pays a fee of \$50.00. This fee must be paid at least thirty (30) days before the end of last semester of attendance.

Late Registration Fee – The student registering after the designated period pays a fee of \$25.00.

- Return checks – A \$10.00 fee will be charged on all returned checks.
- Student I.D. Card – A cash fee of \$5.00 is charged to replace lost cards.
- SCL Fee – Every student registering pays \$15.00 for the support of the Student Christian League at the beginning of the semester (Mandatory Fee).
- UNCF – Every student registering pays \$10.00 for the United Negro College Fund at the beginning of the semester (Mandatory Fee).
- Journal – Every student pays \$5.00 for this publication (Mandatory Fee).
- Binding Fee – The cost of binding M.Div. Senior essay or M.R.E. Senior project essay is \$5.00 per copy (a minimum of two (2) copies required).
- Maintenance of Matriculation Fee – A fee of \$10.00 will be charged each semester.
- Transcript – Two transcripts are furnished free; each additional one cost \$2.00.

HOUSING RESERVATION FEE AND SECURITY DEPOSIT

A security deposit of \$100.00 which also serves as the reservation fee is required for dormitories, apartments and trailers. A deposit of \$5.00 is required for each key. The security deposit is a continuing deposit which remains on the student's account while enrolled and residing at The I.T.C. The deposit for the dormitory is payable prior to June 15, for students entering the Fall Semester. It is due November 15th for those entering Spring Semester. The fee is non refundable after these dates. This fee should be submitted to the respective seminary dean.

The deposit for the apartments and trailer is applicable to above payable dates; *however*, the deposits are payable to The I.T.C. Business Office.

We will deduct from your security deposit the cost of any damage(s) you may cause; if there is no damage(s), the deposit will be refunded when a student either graduates or withdraws from The I.T.C.

Board

All students who are single and living in I.T.C. related housing must pay the cost of board. The only exceptions will be for those students who pay additional housing costs for cooking facilities and medical statements from physicians.

FINANCIAL AID

Financial Aid is available both through constituent seminaries and through The I.T.C.'s Financial Aid Office. All students interested in receiving financial aid should file an application with their Dean and The I.T.C.'s Financial Aid Officer before April 1. Delay beyond this date may hinder their chances of receiving financial aid. The parental information must be completed by your parents.

It is the aim of The I.T.C. to provide financial assistance for every needy student. The financial assistance is made within the Center's resources together with those from federal and private agencies.

The major forms of financial aid to our students are provided by the federal government. These programs are College Work Study (CWS) and National Defense Student Loan (NDSL).

HOW TO APPLY

Students who wish to receive financial assistance must complete the Graduate and Professional School Financial Aid Service (GAPSFAS) application, and mail directly to GAPSFAS, Box 2614, Princeton, N.J. 08541.

A decision for financial assistance on a new student's application is made after admission has been approved to the Center.

Receipt of Financial Aid in one academic year does not automatically mean financial assistance will be given the following year. You must make a GAPSFAS application each year.

TYPES OF ASSISTANCE

CWS — This is a program that provides part-time work at the Center. It is designed to assist students in their school expenses. Students may work a maximum of 15 hours per week while classes are in session, and 35 hours per week during the summer. The rate of pay varies but is at least equal to the minimum wages set forth in the Fair Labor Standards Acts.

NDSL — This program is funded by the federal government. Funds are available to both new and returning students. A student must be enrolled to have been accepted for enrollment in full-time or at least half-time studies and must demonstrate financial need. A student may borrow up to \$2,000.00 a year with no interest accruing while in school. Interest is charged at the rate of 3% per year, and begins to accrue 9 months after attendance ends. There are deferments and cancellations advantages with this program.

Institution Grants

Teagle Grant is a grant offered to students who demonstrate a financial need. Funds are made available through the Teagle Foundation.

REFUNDS AND WITHDRAWALS

Students who officially withdraw voluntarily or involuntarily from The I.T.C. within the time specified after the scheduled registration date may receive refunds. Board charges will be refunded on the basis of food costs only on the remaining unused portion. Students service fees and all other special fees are non-refundable. Formal application for withdrawal must be

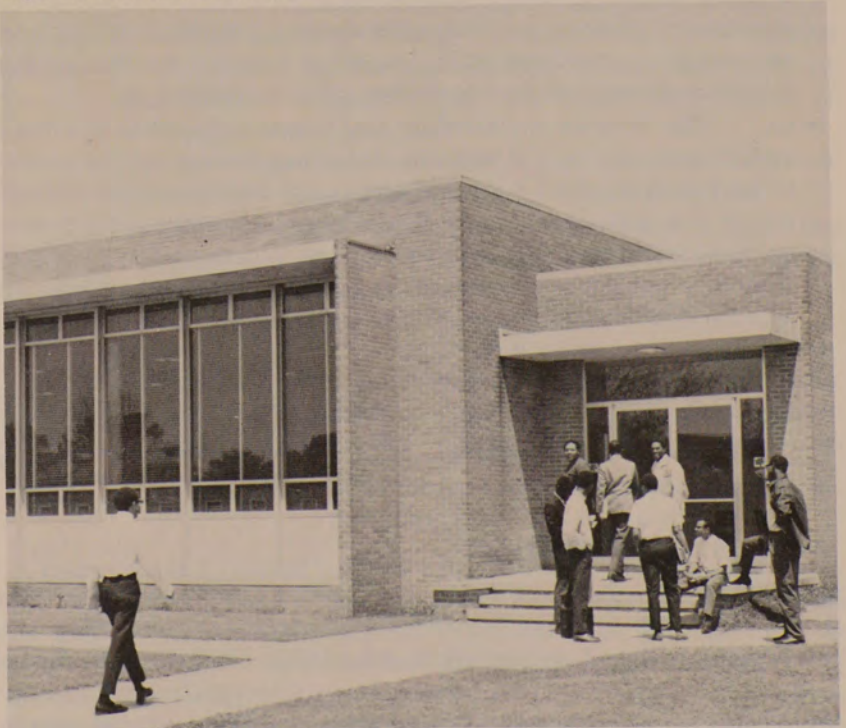
made to the Registrar and permission granted by the Academic Dean and Controller before students may leave The I.T.C. at any time during the semester. Students who withdraw unofficially at any time during the semester will be charged for the entire semester.

When students withdraw within the time specified, all unused financial aid will be returned to the appropriate program sources (federal and non-federal) and not refunded to students.

Upon official withdrawal, refund of tuition will be made according to the following schedule:

Withdrawals	Percentage Refunded
During first week of semester.	80%
During second week of semester.	60%
During third week of semester	40%
During fourth week of semester	20%
After fourth week of semester there will be NO refund	0%

No deduction or refund is made for courses dropped after close of registration for the semester.



COMMUNITY LIFE



Community Life

ACTIVITIES

STUDENT AFFAIRS

The community of The I.T.C. offers more than just a formal education. Every student has the opportunity to participate in a variety of religious, social, cultural, and recreational activities that the city of Atlanta offers. The unique presence of six denominations serve to enhance informal learning on doctrine, rituals, and worship.

Student Organizations

The Student Christian League is the representative body of the entire I.T.C. community of students. It is responsible for directing a wide variety of seminarian activities. Students are represented on all institutional committees to which they are elected by the student body.

STUDENT CHRISTIAN LEAGUE

OFFICERS

1979-80

Vincent Mitchell	President
Kay Albury	Vice-President
Martha Ewing	Secretary
Mary Baker	Corresponding Secretary
David Walker	Treasurer
Frank Portee	Representative to Board of Trustees
Herbert Shackelford	Representative to Board of Trustees
Wilma Joyce Irvin-Grooms	Chaplain
Waymond Dixon	AUC Coordinator
Johnny Riles	Inter Seminary Coordinator
Arnold McKinney	Editor
Lawrence Bethel	Parliamentarian

Denominational Fellowships, The I.T.C. women students and the International students contribute to the vitality of the SCL.

CHAPEL WORSHIP

Services of worship, which are held regularly throughout the school year, are planned and directed by a joint Faculty-Student Committee. These services provide for the deepening and enriching of the devotional life of students and faculty, and for participation in the conduct of public worship.

STATEMENT OF THE PHILOSOPHY OF THE ITC CHAPEL

Worship is response to the experience of the presence, power, love, and guidance of God revealed in Christ to us personally and corporately, and the practicing of that presence in personal and social life.

In The I.T.C. it is more than the Chapel extending as it does to the total life of the community. As a complete experience, its forms and freedom are many: communication between God and God's people; praise and adoration; and God speaking to us through proclamation of the word, dialogical sermons, drama, lectures, music, films and other audio-visuals — all with an emphasis on instruction and experiencing.

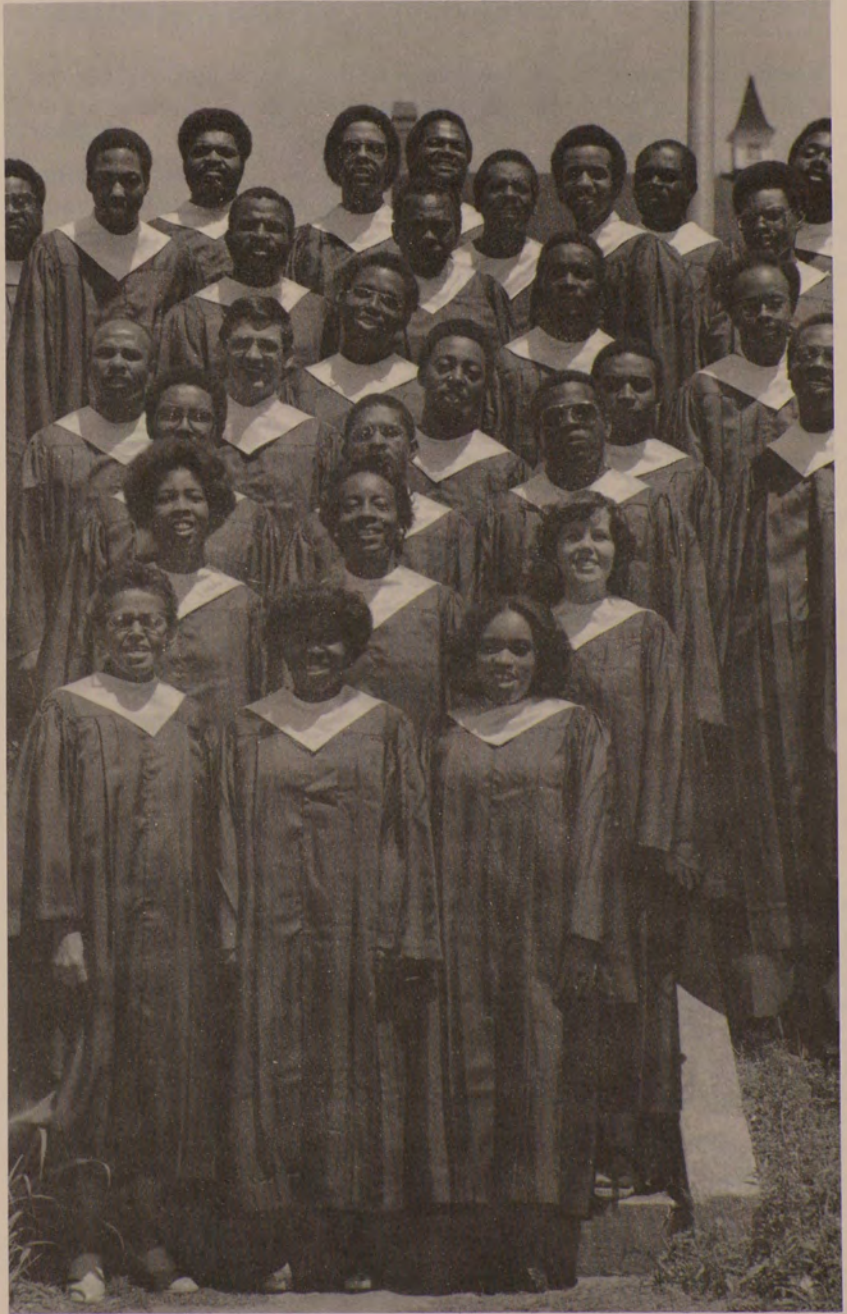
The Chapel experience is the most important aspect of our seminary community. It is the one place where we may all gather as a family to worship God, to lift up the Son as the Lord of our lives and the Source of our nurture, and to accentuate our unity of dedication and purpose in ministry through the power of the Holy Spirit, whom we all share. The Chapel is the church of our particular community, where the welfare of the total family is the theme of all that we do and say.

Our unique community reflects its unity in diversity, which is a quality of life that provides every person access to the total experience and work of this Center. In this setting, we are informed, inspired, and instructed:

- a. by the local and churchwide implications of our common life,
- b. by the life and thought of students, faculty, and dedicated religious leaders,
- c. by the discipline and diversities existing in our common life.

Therefore, our commitment is to establish and maintain our Chapel as an expression of the "Beloved Community", where we seek to capture in each service the beauty and warmth of biblical faith which transforms us into a community of God's family here on earth. In worship one may see our unification in the Spirit as our purpose for Worship.

The Chapel can provide the opportunity for a systematic, continual, and intentional integration of our diversity as a dynamic process of growth in unity that does not seek to culminate in assimilation.



PROGRAMS OF STUDY



Programs of Study

The Center offers seven degree programs, three of which are dual degree or double competency programs. These programs are: Master of Divinity; Master of Religious Education; Master of Divinity—Master of Social Work; Master of Divinity—Master of Science in Urban Life; Master of Religious Education—Master of Education; Doctor of Ministry—In Career; and Doctor of Sacred Theology.

The Doctor of Sacred Theology and Doctor of Ministry degrees are offered in cooperation with other seminaries and agencies in the Atlanta Theological Association (ATA). The M.Div.—M.S.W. degrees are offered jointly with the Atlanta University School of Social Work; the M.R.E.—M.A. degrees in Education are offered jointly with the School of Education of Atlanta University; and the M.Div.—M.S. in Urban Life degrees are offered jointly with Georgia State University.

Undergraduate Pre-Seminary Studies

Prospective students are urged to secure a well-rounded college education. It is the judgement of The Association of Theological Schools that a normative pattern of pre-seminary education will include many of the following subjects:

“English language and literature; history, including non-Western cultures as well as European and American; philosophy, particularly its history and its methods; natural sciences, both the physical and life sciences; social sciences, where psychology, sociology, and anthropology are particularly appropriate; the fine arts and music, especially for their creative and symbolic values; biblical and modern languages; religion, both in the Judaeo-Christian and the Near and Far Eastern traditions.”¹

The Association gives the following statement regarding the application of its statement for admission requirements by its member institutions:

“In no way does it bind or limit the seminaries in the admissions policies. Each seminary is free to set its own entrance and make-up requirements, to add to this statement or change its emphasis.”²

¹Association of Theological Schools Bulletin 28: The Handbook, 1968; p. 56.

²Ibid, p. 57

The faculty of The Interdenominational Theological Center has adopted the following undergraduate pre-seminary studies as normative for admission to the Center:

English—at least 9 semester credits (6 semester credits of which should be in grammar and composition)	
Foreign Language	—at least 6 semester credits
Philosophy	—at least 1 semester course
History	—at least 1 semester course
Natural Science	—at least 1 semester course
Social Science	—at least 1 semester course
Psychology	—at least 1 semester course

A. MASTER OF DIVINITY

1. Terms of Admission

a. Graduates of accredited liberal arts colleges, whose personal and academic credentials are satisfactory, usually are admitted without conditions.

b. Graduates of non-accredited liberal arts colleges, or of accredited state institutions, such as teachers' colleges, and technical schools, will be considered on the merits of their personal and academic records.

2. Requirements for the Master of Divinity

a. The minimum requirements for the Master of Divinity degree are 90 semester credits completed with a grade point average of not lower than 2, or C. Not more than 15 semester credits may be of D grade. All requirements for the M.Div. must be completed within five years from the date of first registration. If work has not been completed within this period, a candidate may apply to the Faculty for readmission. *If a student returns after an absence of more than two years, the requirements will be those current at the time of return.*

Of the 90 semester credits required for graduation, 56 are distributed among the five fields of the curriculum, and constitute a core. This core must be taken by all candidates for the M.Div. degree. In addition, each student is required to elect an area of concentration among the five fields of the curriculum. A *minimum* of nine semester credits above the core must be completed in the field chosen.

All core courses must be taken before a student may proceed to take the required courses in Field Education, and to elect additional courses.

Courses on the graduate level offered outside of The I.T.C. may be taken for credit in The I.T.C. provided students express interest in them and they are recommended by the several fields and approved by the Faculty.

b. Each candidate may write and present a satisfactory **critical essay** during the Senior year. The Essay carries two semester credits. The student's topic must be approved by his or her Advisor and the Vice President for Academic Service by the first Thursday in November. The first draft of the Essay must be submitted by the student to the Advisor by the first day of the second semester; the final draft by the first Thursday in April. The approved final draft of the Essay must be submitted to the Vice President for Academic Services by the Advisor no later than the third Thursday in April, with appropriate letter grade. Any student who chooses *not* to do the Senior Essay must do an additional two-credit course in his/her area of *concentration*.

A Manual for Writers of Term Papers, Theses and Dissertations, by Kate L. Turabian, is to be used as the official standard for style for all written work.

c. *Distribution of Credits*

(1) Core Curriculum. The curriculum is organized according to five general fields of study: Bible; Church History; Philosophy and Theology; Church and Society; Ministries of the Church. Core requirements are distributed among the five fields as follows:

Bible (Old and New Testaments)	12
Church History	6
Philosophy and Theology	7
Church and Society	9
Ministries of the Church	22
Total.	56

(2) Denominational Course Requirements. Courses in denominational history, polity, and doctrine are required by the following denominations: African Methodist Episcopal, Baptist, Christian Methodist Episcopal, Church of God in Christ, United Methodist, and United Presbyterian U.S.A.

d. *Schedule of Required Courses*

Ordinarily, the student is expected to complete the core during the Junior and Middler years. The schedule of required courses in the Core is as follows:

First Semester

BIB501	Old Testament History	3
BIB526	Introduction to the N.T.	3
CHI551	Church History I	3
PTH575	Introduction to Philosophy and Theology	3
MIN716	Worship	2
	Total	14

Second Semester

BIB502	Old Testament Literature	3
BIB527	Introduction to the N.T.	3
CHI552	Church History II	3
CSO620	Introduction to Christian and Social Ethics	3
CSO636	Mission of the Church	3
	Total	15

Third Semester

PTH577	Systematic Theology	4
CSO601	Sociology of Religion	3
MIN705	Preparation of Sermons	3
	Total	10

Fourth Semester

MIN764	Foundations of Christian Education	3
MIN728	Clinical Introduction to Psychology of Pastoral Care	4
MIN706	Delivery of Sermons	3
MIN745	Church Administrations	3
	Total	13

Fifth Semester

MIN743	Field Education	2
--------	---------------------------	---

Sixth Semester

MIN744	Field Education	2
--------	---------------------------	---

3. Suggested Vocational Interest Groupings

Students may have a particular vocational interest or ministry in mind. They may also need guidance in the selection of electives to their greatest advantage. As a guide to that selection, Vocational Interest Groupings have been established, and suggested courses suitable to each grouping are listed below.

Fourteen hours of courses under a grouping are suggested as a minimum number. The student may desire the help of the denominational dean and adviser in selecting the particular courses most suitable for a vocational interest.

a. The Parish Ministry

MIN728	Clinical Introduction to Psychology of Pastoral Care	4
MIN732	Introduction to Pastoral Counseling and Psychotherapy	4
MIN747	Ministerial Leadership	2
MIN717	Church Music	2
CSD638	Education for Mission and Evangelism	2
CSO644	Contemporary Ecumenical Movements	3
CSO652	The Church and Social Work	3
CSO621	Social Ethics and Black Experience	3

Additional courses pertaining, including courses in Fields I, II, and III not taken for concentration.

b. Christian Educational Ministry

MIN761	The Church's Educational Ministry	4
MIN762	Administration and Leadership Development	4
A selection of any one age group as follows:		
MIN767	The Church's Ministry with Children	3
MIN768	The Church's Ministry with Youth	3
MIN769	The Church's Ministry with Adults	2
MIN778	Seminar: Teaching-Learning Process	2
CSO644	Contemporary Ecumenical Movements	3

Additional Courses pertaining, including courses in Fields I, II, and III not taken for concentration.

c. Campus Ministry

MIN732	Introduction to Pastoral Counseling and Psychotherapy	4
MIN747	Ministerial Leadership	2
MIN769	The Church's Ministry with Adults	2
MIN779	The Campus Ministry	2
MIN780	The College Teaching of Religion	2

CSO621	Social Ethics and Black Experience	3
CSO639	Religions of the World	3
CSO644	Contemporary Ecumenical Movements	3
CSO652	The Church and Social Work	3

Additional courses pertaining, including courses in Fields I, II and III not taken for concentration.

d. Institutional Ministry

MIN732	Introduction to Pastoral Counseling and Psychotherapy	4
AU558	Personality Theories.	3
MIN735**	Clinical Pastoral Education	6
MIN767	The Church's Ministry with Children.	3
MIN768	The Church's Ministry with Youth	3
MIN769	The Church's Ministry with Adults	2
MIN776	Seminar: Group Dynamics	2

Additional courses pertaining, including courses in Fields I, II and III not taken for concentration.

** Students desiring certification by the Association for Clinical Pastoral Education to be chaplain in a service institution are required to take four consecutive quarters of clinical pastoral education and/or personal therapy, all of which should be taken beyond meeting the requirements for the M.Div. degree.

e. Social Welfare Ministry

CSO611	Church Community Analysis and Organization	4
CSO621	Social Ethics and Black Experience.	3
CSO652	The Church and Social Work	3

Additional courses pertaining, including courses in Fields I, II, and III not taken for concentration.

f. Missionary Service

CSO637	The Christian Mission in History.	3
CSO639	Religions of the World	3
CSO641	African Christianity: A Third World Force	3
CSO646	The Church and International Relations.	3
AU	Cultural Anthropology	4-6
CSO638	Education for Mission and Evangelism.	2
MIN761	The Church's Educational Ministry	4
MIN762	Administration and Leadership Development	4

Additional courses pertaining, including courses in Field I, II and II not taken for concentration.

g. Other Ministries and Special Interests

Additional vocational groupings may be worked out for vocational interests and needs of individual students.

B. MASTER OF RELIGIOUS EDUCATION

1. Purpose of the Program

The purpose of the program is to provide training for Christian services for the following groups:

Those who may enter full-time church work in other fields but who need religious education as supplementary to other training. This group would include social workers of various kinds, not necessarily under church auspices.

Those who wish to prepare for one of the following types of positions: educational assistants in the local church; certified directors of Christian Education in local churches, districts or conferences; missionary service; religious social workers in Community Centers, the Y.M.C.A. or Y.W.C.A., Boy Scouts, Girl Scouts or Campfire Girls; or teachers of the Bible, Religious Education, and related subjects in schools or colleges.

2. Terms of Admission

All persons seeking candidacy for the M.R.E. degree must meet the requirements for admission to the M.Div. program as outlined under "Admission, Registration. . ."

3. Requirements for the M.R.E.

Candidates for the degree must complete 60 semester credits for post-collegiate work with a grade point average not lower than C. Not more than 10 credits may be D grade. **A minimum of 18 credits must be in Christian Education courses, 4 credits of which must be earned in Field Education.**

A student transferring from another accredited seminary must complete at least his or her last 30 semester credits in residence at the Center.

All requirements must be complete within five years from the date of registration. If a student returns after an absence of more than two years, the requirements will be those current at the time of re-entrance.

DISTRIBUTION OF CREDITS

FIELD I – The Bible	12
Old Testament	6
New Testament	6
FIELD II – Church History	3
FIELD III – Philosophy and Theology	4
FIELD IV – Church and Society	6
Sociology of Religion	3
Mission	3
FIELD V – Ministries of the Church	24
Introduction to Theological Communication	3
Psychology of Religion	3
Christian Education	18
Electives	11
Total	60

SUGGESTED SCHEDULE OF REQUIRED COURSES

First Semester

BIB501	Old Testament History and Literature	3
BIB526	Introduction to the New Testament	3
MIN701	Introduction to Theological Communication	3
MIN761	The Church's Educational Ministry	4
MIN771	Field Education in Teaching	1
	Total	14

Second Semester

BIB 502	Old Testament and Literature	3
BIB527	Introduction to the New Testament	3
CSO636	Mission of the Church	3
MIN727	Psychology of Religion	3
MIN772	Field Education in Teaching	1
	Electives	3
	Total	16

Third Semester

CHI551	Church History I	3
PTH577	Systematic Theology	4
CSO601	Sociology of Religion.	3
MIN773	Field Education in Administration	1
	Electives	5
	Total.	16

Fourth Semester

MIN762	Administration and Leadership Development	4
MIN774	Field Education in Administration	1
	Electives	9
	Total.	14

Project Essay

Each M.R.E. candidate is required to present a written Essay based upon a supervised field education project assignment. The emphasis of the Essay is to be chosen in consultation with the Advisor. A complete outline is due in the hands of the Advisor by the first Thursday in November of the Senior year and the title is to be filed with the head of the department and with the Vice President for Academic Services. The first draft must be submitted to the candidate's Advisor by the first day of the second semester. The Essay must be approved by the Advisor and one other professor in the department. Two copies of the final draft must be in the hands of the Advisor by the first Thursday in April. The approved final drafts must be filed with the Vice President for Academic Services by the third Thursday in April.

Two copies are to be bound and placed one each in the Center Library and with the head of the department. The student will be charged the prevailing fee for binding. (See page 30).

C.M. DIV. AND M.S.W. DOUBLE-DEGREE PROGRAM

This program is offered jointly by The I.T.C. and the Atlanta University School of Social Work. The M.Div. degree will be awarded by The I.T.C.; the M.S.W. by the AUSSW. The student can enroll in either institution first and then apply for participation in the double-degree program with the other institution.

If the student comes to The I.T.C., he or she must achieve a "B" average here in order to be considered for the double-degree program; the student must also major in the field of Church and Society.

The total number of years estimated to complete this double-degree program is four. This may vary, however, depending on how rapidly a student meets the two schools requirements. A possible program for the student could be as follows:

First year	I.T.C. 15 credits first semester 17 credits second semester
Second year	I.T.C. 17 credits each semester
Third year	AUSSW (plus limited credits at The I.T.C.) 13 credits first semester at AUSSW (plus 2-4 credits at I.T.C.) 15 credits second semester at AUSSW
Fourth year	AUSSW and I.T.C.

Special Note: All financial arrangements must be made by the student in relation to each school as attendance in each is planned. There is no over-all funding of the program or general scholarships covering all four years and from one source. Additional information about the M.S.W. should be obtained directly from the AUSSW.

D. M.R.E. AND M.A. IN EDUCATION DOUBLE-DEGREE PROGRAM

This program is offered jointly by The I.T.C. and the School of Education of Atlanta University. The student can enroll in either institution first and then apply for participation in the dual-degree program with the other institution. The M.S. in Education is awarded by the A.U. School of Education, and the M.R.E. is awarded by The I.T.C.

If the student first comes to The I.T.C., he or she must achieve an average of "B" in order to be considered for the dual-degree program; and the student must be enrolled in the M.R.E. program.

Students from I.T.C. may work in any of the departments at A.U.'s School of Education as long as they meet the requirements of that department. A possible program for the student could be as follows:

First year and summer	32 semester credits at I.T.C.
Second year and summer	39 semester hours at A.U. School of Education (Thesis optional)
Third year	26 hours at I.T.C. (M.R.E. Senior Essay)

Special Note: All financial arrangements must be made by the student in relation to each school as attendance in each is planned. There is no overall funding of the program or general scholarship covering all three years and from one source. Additional information about the M.A. in Education should be obtained directly from the A.U. School of Education.

E. M.DIV. AND M.S. DOUBLE-DEGREE PROGRAM

Offered jointly by The I.T.C. and the School of Urban Life of Georgia State. The student can enroll in either institution first and then apply for participation in the double-degree program with the other institution.

If the student first comes to The I.T.C., an average of B must be achieved in order to be considered for the double-degree program; and the student must have a major in the field of Church and Society. Additionally, the student must meet the Georgia State admission requirements.

The total number of years estimated to complete this double-degree program is 3½. This may vary, however, depending on how rapidly a student meets the two schools' requirements. A possible program for the student could be as follows:

First year	I.T.C. Two full semesters
Second year	I.T.C. Two full semesters
Third year	Georgia State University's School of Urban Life Four full quarters, 60 quarter credits (10 quarter credits equivalent may be accepted from I.T.C. course work) Evidence of proficiency in language or statistics, etc. Satisfactory completion of thesis on master's level Awarding of M.S. degree

Fourth year	I.T.C.
(one-half	One full semester
year)	Awarding of M.Div. degree

Special Note: All financial arrangements must be made by the student in relation to each school as attendance in each is planned. There is no overall funding of the program or general scholarships covering all 3½ years and from one source. Additional information about the M.S. in Urban Life should be obtained directly from the School of Urban Life, Georgia State University.

F. THE IN-CAREER D.MIN. DEGREE PROGRAM

The In-Career Doctor of Ministry program for the working minister is administered by the schools participating in the Atlanta Theological Association. The program has been designed to continue the education of persons for their practice of ministry in the church and in related institutional settings. It provides an advanced, yet flexible, education for those whose vocation as servants of people and servants of Jesus Christ implies their further disciplined reflection upon, and possible their further specialization within, their own ministry.

General Requirements

Applicants must hold the M.Div. or equivalent degree from an accredited college with a superior academic record and/or professional performance. One year of involvement in professional ministry must have elapsed between receiving the M.Div. degree and applicants who have three or more years of professional experience in the ministry will be given preference.

Basic Expenses

Tuition	\$70.00 per credit
Registration Fee	\$10.00 per semester
Library Fee	\$5.00 per semester

Curricular Requirements

Thirty-six semester credits are required for the completion of the Doctor of Ministry program. Of the thirty-six credits, eighteen are fulfilled in elective course work in one of the A.T.A. schools of theology. The remaining eighteen credits are comprised of a D.Min. Core Seminar, an approved clinical experience, and a concluding doctoral project/dissertation. Program require-spread over a four-year period to enable occasional part-time study.

The Electives. The eighteen seminar credits of elective courses are chosen

by the student, with the counsel of his or her Advisor, in light of personal needs and interests and as determined by the student's overall intentions for the program. Care must be taken, however, to include some work from each of the three basic study areas: Normative, Empirical, and Functional. As much as one-third of the elective requirements (or 6 semester credits) may, with permission of the student's Advisor and the A.T.A. Graduate Professional Studies Committee, be fulfilled in an accredited institution of graduate education outside the A.T.A. consortium.

The D.Min. Core Seminar. Early in the program all students are expected to participate in a Core Seminar which seeks to facilitate the interchange of disciplinary perspectives around particular issues of contemporary ministry and professional development. The seminar is team-taught by faculty from several curriculum areas, and students themselves are responsible for much of the seminar's content. One specific aim of the seminar is to aid the student's formation of his or her own Ministry Theory; another is to provide a forum in which the three dimensions of the program — normative, empirical, and functional — can be experienced.

Clinical Experience. One quarter of supervised clinical experience is required. An additional quarter may be elected by those for whom this is a special need or interest. These may take place in settings as diverse as a teaching hospital (administered under the Clinical Pastoral Education Program); a business, governmental or voluntary agency (administered under the Urban Training Organization of Atlanta), or in a church agency where appropriate supervision and learning opportunities are available. One important feature of the clinical experience is that it takes place in a setting outside the student's ordinary work situation to enable him or her to achieve some new perspectives on self, profession and the relation of both to the needs of other persons and institutions.

Doctoral Project. The above three elements of the study program are intended to converge in the development of a doctoral project. Proposals for the project are welcome at any time in the student's progress through the program, and such proposals can serve as an integrating focus for the individual's overall study program design. Plans for the project are not considered final, however, until the other parts of the program are completed. Ordinarily the project is to be undertaken in the setting where the student is carrying on his or her own ministry. Scheduling of completion of the project is flexible.

Application

Formal application documents include biographical data, academic records, references, and a personal statement of not more than ten double-spaced pages describing the applicant's interests and goals for his

D.Min. program. These data will be assessed by the admissions committee at I.T.C. which will make its recommendation to the Atlanta Theological Association for final approval or disapproval.

Three copies of an application form are completed by the applicant, who sends along with the other data a nonrefundable fee of \$20.00 to the A.T.A. office.

A personal conference must be arranged with the official responsible for the D.Min. program in the school to which application is being made.

Information and Application Forms

Application forms and general information regarding the In-Career D.Min. program and information (e.g., fees, interviews, student services, and registration) related to the D.Min. program may be obtained from:

Dr. Edward P. Wimberly
The Interdenominational Theological Center
671 Beckwith St., S.W.
Atlanta, Georgia 30314
Phone: (404) 525-7456

G. DOCTOR OF SACRED THEOLOGY (S.T.D.)

This degree is offered through the Atlanta Theological Association by the Candler School of Theology, Columbia Theological Seminary, and The Interdenominational Theological Center. It is administered by the Atlanta Theological Association which has responsibility for approving admissions to the program, establishing curriculum offerings, and certifying candidates for the award of degrees.

Application forms and further general information about the S.T.D. in Pastoral Counseling program may be obtained from:

Dr. John H. Patton, Director
Doctoral Program in Pastoral Counseling
1700 Clifton Road, N.E.
Atlanta, Georgia 30329
Phone: (404) 636-1457

or

Atlanta Theological Association
Columbia Theological Seminary
Decatur, Georgia 30031
Phone: (404) 373-6366

Basic Expenses

Tuition	\$70.00 per credit
Registration Fee	\$10.00 per semester
Library Fee	\$5.00 per semester

SPECIAL PROGRAMS

Presently there are two special programs operated by The I.T.C.: Program of Continuing Education; and Religious Heritage of the Black World. Admission to these programs is through the respective program directors, except that I.T.C. students may register for credit in Directed Research in the Religious Heritage of the Black World Center. Respective directors to whom inquiries should be addressed are as follows:

Professor Mance C. Jackson, Director
Program of Continuing Education
671 Beckwith St., S.W.
Atlanta, Georgia 30314

Dr. George B. Thomas, Director
Religious Heritage of the Black World Center
671 Beckwith St., S.W.
Atlanta, Georgia 30314

COURSES OF STUDY



Courses of Study

NUMBERING OF COURSES IN THE I.T.C. AND THE A.U. CENTER

BIB—Bible	501-550
CHI—Church History	551-574
PTH—Philosophy and Theology	575-600
CSO—Church and Society	601-699
MIN—Ministries of the Church	700-999

Courses may be changed without previous notice.

In the M. Div. and M.R.E. programs, Middlers or Seniors who maintain an average of "B" or above may pursue topics of special interest as Directed Study in the fields where such courses are specified. The number of credits taken as Directed Study may not exceed four for any given semester or fifteen during the Student's total program.

Courses marked with an asterisk (*) may be taken for credit in either field in which they appear.

Students who wish to enlarge their program of study by registering for courses in the Candler School of Theology, Emory University and the Columbia Theological Seminary without additional cost should consult the Registrar.

FIELD I. BIBLE (BIB)

A. Old Testament

501. OLD TESTAMENT HISTORY

A survey of the history of Israel from earliest times to the beginning of the Roman period. Special consideration is given to extra-biblical materials which have bearing on the milieu in which Israelite history developed. *Required of Juniors.*

First and Second Semester 3 credits

502. OLD TESTAMENT LITERATURE

An introduction to the literature and thought of the Old Testament. Torah, Prophets, Psalter, Wisdom materials, other Jewish writings, formation and development of the Old Testament canon are matters explored. *Required of Juniors.*

First and Second Semester 3 credits

503. PROPHETS

An invitation of the prophetic tradition found in the Old Testament. Extra-biblical materials which are important for an understanding of the

development of Hebrew prophecy will be utilized. Emphasis will be placed on Hebrew prophecy during its classical period. Consideration will be given to prophetic and other Old Testament influences on the formation of the early church.

First Semester 3 credits

504. THE BOOKS OF SAMUEL

Emphases are placed on the importance of these books for understanding the prophetic and monarchical traditions in Israel. The results from modern archaeological and literary analyses are employed in an attempt to understand many of the institutions which were central to Yahwism. The course is designed to meet the needs of those who are interested in Ancient Near Eastern history, the history of Israel, and the exegetical method.

Waters Second Semester 3 credits

505, 506. BEGINNING BIBLICAL HEBREW

A study of Hebrew grammar, syntax, and vocabulary with exercises in reading and writing Hebrew. Credit is given only when course is pursued for a full year.

First Semester 3 credits; Second Semester 3 credits

507. APOCALYPTIC LITERATURE

A study of the intertestamental period from the fourth quarter of the fourth century B.C. to the first century A.D. with focus on the development and major elements of apocalyptic writings.

Second Semester 3 credits

508. PERSONALITIES OF THE OLD TESTAMENT

A seminar in which students are assigned or are permitted to choose particular Old Testament characters for intensive study.

Branch First Semester 2 credits

510. SEMINAR: HEBREW SOCIAL LIFE

A study of selected customs, mores, practices, and institutions of Hebrew life with a view to enhancing the understanding and appreciation of the Old Testament heritage. Members of the class will do research on assigned topics upon which they will report to the class.

First Semester 2 credits

511. THE HEXATEUCH

An examination of the Hexateuch in terms of the various source theories and hypotheses of modern biblical scholarship. Special attention is given to extrabiblical documents and movements which are thought to have influenced the formation of the Hexateuch.

First Semester 3 credits

512. PSALMS

An intensive study of the book of Psalms with attention given to development, organization, and content. Interpretation of individual psalms is presented in light of life situations. (Offered in 1978-79 and in alternate years.)

Second Semester 3 credits

515. WISDOM LITERATURE

An investigation of the two-fold current of wisdom in Hebrew literature: (1) conventional orthodox wisdom and (2) radical questioning type wisdom represented by Qoheleth Job.

Waters First Semester 3 credits

516. JOB

A critical study of the book of Job with special attention to its theological significance.

Branch Second Semester 2 credits

517. ISAIAH, JEREMIAH, AND EZEKIAL

Historical and critical study of the books of Isaiah, Jeremiah, and Ezekiel for an understanding of their teachings in Israel's life and thought and for their continuing relevance.

Second Semester 3 credits

518. THE BOOK OF THE TWELVE PROPHETS

A study of the various briefer prophetic writings with reference to their historical content and religious values.

Second Semester 3 credits

519, 520. ADVANCED HEBREW

Reading and exegesis of selected biblical passages.

First Semester 3 credits; Waters Second Semester 2 credits

522. THEOLOGY OF THE OLD TESTAMENT

An investigation of the theological basis of the religion of the Old Testament. An assessment of the redemptive and creative acts of God, the judgment and salvation of God, and the worship and service of God are the focal points of the investigation.

Second Semester 3 credits

B. New Testament

526. INTRODUCTION TO THE NEW TESTAMENT

Introduction to the Synoptic Gospels and Acts with emphasis upon methodology and content. *Required of Juniors.*

Briggs or Associate First and Second Semester 3 credits

527. INTRODUCTION TO THE NEW TESTAMENT

Continuation of 526 including the remaining literature of the New Testament. *Required of Juniors, Prerequisite: 526.*

First and Second Semester 3 credits

530. NEW TESTAMENT GREEK

Introduction to the basic elements of the grammar of New Testament Greek.

Briggs First Semester 3 credits

531. NEW TESTAMENT GREEK

Continuation of 530. Credit is given only for the completion of 530 and 531.
Prerequisite: 530.

Second Semester 3 credits

535. SYNOPTIC GOSPELS

Critical examination of selected aspects of Synoptic thought with emphasis upon methodology. *Prerequisite: 527.*

First Semester 3 credits

536. PAULINE LITERATURE

English exegesis of selected Pauline letters. *Prerequisite: 527.*

First Semester 3 credits

537. JOHANNINE LITERATURE

English exegesis of the Gospel of John and the epistles of John. *Prerequisite: 527.*

Second Semester 3 credits

538. JEWISH BACKGROUND OF THE NEW TESTAMENT

Seminar. Study of Palestinian and Hellenistic Judaism in its influence upon Christian origins. Primary documents in English translation will be used, e.g. Rabbinic literature, the Dead Sea Scrolls, Philo's writings.

Second Semester 2 credits

539. HELLENISTIC BACKGROUND OF THE NEW TESTAMENT

The influence of some aspects of Hellenistic thought and culture upon developing New Testament theology. *Prerequisite: 527.*

First Semester 2 credits

540. NEW TESTAMENT THEOLOGY

Interpretation of the developing theology of the early Christian movement as expressed in the literature of the New Testament and the Apostolic fathers. *Prerequisite: 527.*

Briggs First Semester 3 credits

541. DEUTERO-PAULINE LITERATURE

English exegesis of Colossians, Ephesians, and the Pastoral epistles. *Prerequisite: 527.*

Second Semester 3 credits

542. THE EPISTLE TO THE HEBREWS

English exegesis of the epistle to the Hebrews.

Fall or Spring Semester 2 credits

545. ADVANCED NEW TESTAMENT GREEK

Study of selected sections from the New Testament with emphasis upon syntax and vocabulary. *Prerequisite: 531.*

Briggs First Semester 3 credits

546. READINGS IN HELLENISTIC GREEK

Careful reading of selections from the New Testament, the Apostolic Fathers, the LXX, and Hellenistic literature of the first three centuries. *Prerequisite* 545.

Briggs Second Semester 3 credits

548. TEXT CRITICISM OF THE NEW TESTAMENT

History of the New Testament canon, study of the principles of text criticism, and practice exercises in the text criticism in the New Testament. *Prerequisite: 530.*

Second Semester 3 credits

FIELD II. CHURCH HISTORY (CHI)

551. CHURCH HISTORY I

An introduction to the history of the church from the beginning and the Apostolic age through the Medieval period. *Required of M. Div. and M.R.E.*

Henry Either Semester 3 credits

552. CHURCH HISTORY II

An introduction to the history of the church from the Reformation period to the present. A continuation of 551. *Prerequisite: 551. Required of M. Div.*

Smith Either Semester 3 credits

553. AFRICAN FATHERS OF THE CHURCH

A seminar on selected African Church Fathers and their contributions to the development of Early Christianity. Selections from the writing of men such as Cyprian, Tertullian and Augustine will be considered.

Henry First Semester 3 credits

554. WEST INDIAN CHRISTIANITY

A survey of the planting and development of Christianity in the West Indies and the implications for the cultural, economic and political development of Black people.

Smith Second Semester 3 credits

555. STUDIES IN ECONOMIC CHURCH HISTORY

A seminar dealing with selected topics in the economic history of the church. Such topics as the church and slavery, capitalism and puritanism, the segregated church and Black economic development will be included.

Henry Second Semester 3 credits

558. DENOMINATIONAL HISTORY

Required by the denominations indicated:

- a. African Methodist Episcopal Wilkerson
- b. Baptist Saucer
- c. Christian Methodist Episcopal Dopson
- d. Church of God in Christ Haney
- e. United Methodist Jones
- f. United Presbyterian, U.S.A. Costen

First Semester 2 credits

561. RELIGION IN AMERICA

The history of religion in America from colonial times to the present. Consideration is given to the major trends in each period of our national life, and the accompanying development in American religious life and thought.

Henry Second Semester 3 credits

CHI 562. HISTORY OF THE BLACK CHURCH

A study of the history of Christianity in America shaped by the total experience of Afro-Americans. Attention will be given to the distinct denominations of Black Americans and the expression of the church among Black Americans within the larger denominations from colonial times to the present.

Henry Second Semester 3 credits

CHI 563. THE WESLEYAN REVIVAL

A study including the social and religious conditions in 18th century England; Wesley's biography; The Revival and its involvement in moral and social reform.

Smith First Semester 3 credits

564. HISTORY OF CHRISTIAN THOUGHT

A general survey of Christian thought from the Apologists to the medieval period with emphasis upon the development of classical doctrine. Not open to Juniors.

Henry First Semester 3 credits.

CHI 565. WOMEN IN THE HISTORY OF CHRISTIANITY

A seminar designed to enhance recognition of the participation of women in the history of the church. The study will include a rapid survey of the activity of women and attitudes regarding that activity in each major period of church history from Biblical times to the present.

Henry and Staff Second Semester 3 credits

CHI 567. THE CHURCH IN 17TH AND 18TH CENTURY AMERICA

The course is designed to give special attention to the rise of the Black Church and Black Leadership, the Great Awakening, the evangelical thrust, the major denominational streams in colonial America.

Smith First Semester 3 credits

568. EARLY CHRISTIAN THOUGHT

Studies in the thought of the Church Fathers. Topic for 1975-1976: A study in the life and thought of Augustine with special attention to his major works, including the "Confessions" and "City of God."

Smith First Semester 3 credits

569. THE CHURCH IN NINETEENTH CENTURY AMERICA

A seminar on the Church in America during the 19th century. Special emphasis is placed on the Black Church and the Black experience and the relationship with major political, social and economic developments.

Smith Second Semester 2 credits

570. RESEARCH IN AMERICAN CHURCH HISTORY

A seminar on dominant themes in American Church History highlighting the particular problems and opportunities of Black Church historiography. Each student selects a topic for investigation. *Prerequisite: CHI 561 or 562.*

Henry First Semester 2 credits

571. THE LUTHERAN REFORMATION

A study of the life and work of Luther with particular attention to his theology.

Smith Second Semester 2 credits

572. THE CALVINIST REFORMATION

A study of the life and thought of Calvin, including reading and discussion of the Institutes of the Christian Religion.

Smith Second Semester 2 credits

573. THE CHRISTIAN MISSION IN HISTORY*

A study of the world-wide expansion of the Christian mission with major emphasis upon the first hundred years and the last two centuries.

Second Semester 3 credits

574. DIRECTED STUDY IN CHURCH HISTORY

For the individual student who desires to pursue topics of special interest in the field of Church History.

Henry or Smith Either Semester 2 credits

CSO 641. THE CHRISTIAN CHURCH IN AFRICA*

See description under Church and Society.

First Semester 3 credits

FIELD III. PHILOSOPHY AND THEOLOGY (PTH)

575. INTRODUCTION TO PHILOSOPHY AND THEOLOGY

A course designed to introduce the student to the nature and content of philosophy, philosophy of religion, and theology with reference to the Black Christian experience in America. *Required of M.Div.*

Every Semester 3 credits

577. SYSTEMATIC THEOLOGY

The important doctrines of Christianity are studied in an effort toward the clearest possible understanding of the Christian faith. Special attention given to the Black Christian experience. *Required of M.Div. and M.R.E.*

Diamond Every Semester 4 credits

578. A HISTORY OF BLACK THEOLOGICAL THOUGHT IN AMERICA.

An effort to introduce the student to the theological heritage of Black Christians.

Diamond First Semester 3 credits

581. PHILOSOPHY OF RELIGION

The effort to interpret the traditional problems and typical solutions of philosophy of religion in the light of the Black Christian experience.

Diamond First Semester 3 credits

583. PHILOSOPHICAL AND THEOLOGICAL VIEWS OF MAN

A critical study of selected theories of man with the purpose of developing a positive Christian anthropology. Special attention given to emerging views of man developed by Black theology.

First Semester 2 credits

584. DOCTRINE OF RECONCILIATION

A study of biblical materials, historical interpretations, and contemporary views with reference to reconciliation and its meaning for the Black Christian experience.

Diamond Second Semester 2 credits

586. WESLEYAN THEOLOGY

The distinctive doctrines of Wesley are considered in their historical setting and present significance. *Required for students in the Christian Methodist Episcopal and United Methodist denominations.*

Diamond Alternate Years 2 credits

588. HISTORICAL THEOLOGY

An examination of the specifically theological thinking of the Church in its historical context and with reference to its influence in the Church of today, especially the black church.

First or Second Semester 3 credits

589. DIRECTED STUDY IN THEOLOGY

For the student who wants to pursue a special interest in theology.

Diamond Every Semester 3 credits

591. CONTEMPORARY THEOLOGY

Modern movements and trends in Christian theology are examined and interpreted in the light of their relevance to the black Christian experience. This course is offered frequently, and each time with a different content; therefore, it may be taken more than once.

Diamond First or Second Semester 3 credits

594. SEMINAR IN BLACK THEOLOGY

An examination of relevant black theological thought, the goal of which is to attempt further creative work in Black Theology.

First Semester 3 credits

599. HISTORIC ROOTS OF LIBERATION THEOLOGY

An inquiry into those elements in early Christian theology which serve as background for contemporary liberation theology, and the process whereby they have been generally ignored in later Christian tradition.

Gonzalez Second Semester 3 credits

CHI 564. HISTORY OF CHRISTIAN THOUGHT*

(See description under Church History)

CSO 622. THEOLOGICAL ETHICS AND BLACK LIBERATION*

(See description under Church and Society)

**CSO 645. ECUMENICAL THEOLOGY IN AN INTERCULTURAL
CONTEXT**

(See description under Church and Society)

FIELD IV. CHURCH AND SOCIETY (CSO)

A. Sociology of Religion and Community.

601. SOCIOLOGY OF RELIGION

An introduction to the theories and methods of the Social Sciences which contribute to the understanding of religious life and institutions. Particular attention is given to sociological analysis of Black religions, the Black Christian Church and the function of transforming the social order. *Required of M. Div. and M.R.E. Prerequisite for 611.*

Shopshire First and Second Semester 3 credits

602. CHURCH INVOLVEMENT IN COMMUNITY LIFE

This course offers a rationale for involvement of the church in community structures and processes. It examines selected methodological and substantive issues pertaining to the collection of pertinent information and effective use of that data in constructing practical models and approaches to ministry. The course will seek direct exposures to various social, religious, economic, political and cultural structures in the community. Written reports and evaluations will be required on community involvements. Particular attention will be focused on the implications arising from needs and issues in the broad spectrum of social life for black churches and organizations in urban, suburban, and rural situations. (offered 1976-77).

Shopshire Second Semester 4 credits

611. CHURCH AND COMMUNITY ANALYSIS AND ORGANIZATION

A comparative analysis of institutions; the application of advanced social survey methods and theory especially to the black pastor's role and to the local church's relations to its environs; a study of the newest approaches by churches to developments in the social organizations and black consciousness movements. Surveys, census, graphic representations and written reports included. *Prerequisite: 601.*

Shopshire Second Semester 4 credits

Note: (*) offered alternate years, 1979-80

**614. SEMINAR AND INTERNSHIP:
THE BLACK PREACHER AS COMMUNITY ORGANIZER IN
URBAN LIFE**

This course makes a coordinated approach to interrelating seminar and internship with functional skills in systems analysis. The internship experi-

ences will be arranged in existential legal, medical, civic, socio-economic and political contexts which expose the needs, problems and issues facing Black people. In the seminar, resource persons of particular expertise will come in to inform and analyze, interpret and evaluate discussions following critiques on the internship encounters of students. There will be one seminar every other week. However, the emphasis of the course will be placed on contextual learning in community. (Offered alternate years, 1976-77.)

Shopshire First Semester 3 credits

616. RELIGION, SOCIETY, AND SOCIAL CHANGE

A critical examination will be made of the reciprocal relationships between society/social forces and religious belief/behavior patterns. The approach will include a survey and analysis of religious world views in contemporary society, and an attempt to understand how they have shaped or have been shaped by various social systems. Consideration will be given racial minority movements and organizations with religious ideologies, and the indices of religious change/social change.

Shropshire First Semester 3 credits

617. DIRECTED STUDY IN SOCIOLOGY OF RELIGION

For the individual student who desires to pursue the special study of selected areas or Theoretical/Critical aspects of Sociology of Religion. *Prerequisite: 601.*

Shopshire/Thomas First and Second Semester 3 credits

B. Ethics

620. INTRODUCTION TO CHRISTIAN AND SOCIAL ETHICS

This course is designed to examine the nature, task, and expectations of Christian and social ethics; the presuppositions of man in the light of his perception of the modern world, and the social forces which inform and help to shape his moral consciousness. An analysis of such social thinkers as Martin Luther King Jr., Joseph Washington as well as Reinhold Niebuhr, Lehmann, Bonhoeffer, and Barch in terms of their ethical thought. *Required of M.Div.*

First and Second Semester 3 credits

621. SOCIAL ETHICS AND BLACK EXPERIENCE

Survey of contemporary theories, concepts, divergent methodologies, and new trends in social ethics; some attention will be given to their relation to the social sciences with reference to communitarian ethics and Black experience. (Offered alternate years, 1978-79)

First Semester 3 credits

622. SEMINAR: THEOLOGICAL ETHICS AND BLACK LIBERATION*

This course is designed to examine significant historical and contemporary theological and ethical works in the light of the Black experience. Through intensive research and critical analysis of the Black experience as the organizing principle, ethical values are engaged in the discovery and clarification of a value system that is relevant to Black liberation as a redemptive process.

Thomas Second Semester 3 credits

Note: (*) offered alternate years, 1979-80

623. ETHICS AND SOCIAL RECONSTRUCTION, I

An introduction to critical examination of the philosophical, biblical, and ethical basis for responsible decision-making in terms of the procurement of equal justice and freedom on the part of the oppressed in American society; emerging ethical models and theoretical analysis of the social order will also be a major concern. *Prerequisite: 620 or 621.*

First Semester 4 credits

624. ETHICS AND SOCIAL RECONSTRUCTION, II

Part-two is in sequence to part-one and provides an analysis of selected socio-ethical issues such as racism, violence, and abortion with reference to Christian norms; the application of ethical theory to problems in race relations will also be emphasized. *Prerequisite: 623 or 620.*

Second Semester 4 credits

654. SOCIAL CHRISTIANITY AND CULTURAL CHANGE

Survey of literature of social Christianity in the late nineteenth and early twentieth centuries; its relation to Mainstream Protestantism and Marxian Socialism with special reference to the Social Gospel as a force for religio-cultural change.

Second Semester 4 credits

632. DIRECTED STUDY IN ETHICS

For the individual student who desires to pursue the special study of selected areas within social and/or Christian ethics. *Prerequisite: 620.*

Thomas/Shopshire First and Second Semester 3 credits

C. Missiology and Global Ministries

636. THE MISSION OF THE CHURCH

A study of the biblical and theological basis for the mission of the Church; missionary principles and practices of the Church through the centuries, including the Black Church; emerging new patterns of the Christian mission today. *Required of M. Div. and M.R.E.*

Thomas First and Second Semester 3 credits

637. THE CHRISTIAN MISSION IN HISTORY

A study of the world-wide expansion of the Christian mission with major emphasis upon the first five hundred years and the last two centuries.

Staff First Semester 3 credits

638. EDUCATION FOR MISSION AND EVANGELISM

A study of basic principles of education for mission and evangelism in the local church, the Christian mission in our revolutionary world, and planning the missionary and evangelistic education in the local church. (offered alternate years 1976-77).

Staff Second Semester 2 credits

639. RELIGIONS OF THE WORLD

An examination of some of the contemporary religious faiths—beginning with some of the African traditional religions, especially the Guinea Coast cultures

and the Islamic influences in West Africa as background to the Black Muslim movement in U.S. An examination will also be made of some of the religions of the Middle and Far East. The approach will be from the standpoint of their origin, history, basic teachings, and their significance to Christianity and the modern world.

Thomas Second Semester 3 credits

641. AFRICAN CHRISTIANITY: A THIRD WORLD FORCE

An exploration of the African origins of Christianity and the emergence of Christianity as an African Religion. The planting of Christianity in Africa and the emergence of the African church, the independent Christian movements and the mission predicament. African Christianity would be viewed as a third world force in the ecumenical thrusts of AACC (All African Christian Church) as the vanguard of Pan-African Christianity.

Thomas First Semester 3 credits

644. NEW DIRECTIONS IN LATIN AMERICAN THEOLOGY

God is speaking a fresh word today among the oppressed. Using the Latin American reality as the context, this course interprets the Christian faith for North Americans. The purpose is to discover the implications of today's Third World dynamic for the ministerial task in the United States.

Kirkpatrick Second Semester 2 credits

645. ECUMENICAL THEOLOGY IN AN INTERCULTURAL CONTEXT*

Though the culture of the U.S. is pluralistic, it remains predominantly shaped by white Anglo-Saxon mentality. The black church in the U.S. has historically performed ministry under that pattern. Even if the society opens increasingly to blacks, the cultural dominance of white thought patterns will continue. This course will seek to discover how Third World theology can inform ministry in the black church in this cultural situation.

Kirkpatrick Second Semester 3 credits

649. DIRECTED RESEARCH: HERITAGE AND BLACK RELIGIOUS CONSCIOUSNESS

This course is an introduction to a systematic study of the religious movements which are undergirded by philosophical ideas and religious beliefs of black people from Africa extending into the Afro-world. Directed research is engaged to identify and study the continuing heritage implicit in black religious consciousness in the literature as well as a study of the implications of linkages in black religious movements in the world.

Thomas First Semester 3 credits

650. DIRECTED RESEARCH: HERITAGE AND BLACK RELIGIOUS MOVEMENTS

This course pursues both comprehensive and/or in-depth social research on the Black church and black religious movements in sections of the Americas. It is intended to promote intensive and extensive documentation of the religious heritage of black people, religious leaders, organizations and movements. Heritage is also distinctively viewed as a religious dynamic in the black struggle.

Thomas Second Semester 3 credits

D. Church Social Work

652. SEMINAR: CHURCH AND SOCIAL WORK

This course is required of all students who are pursuing the double competency degree. It is offered for those students who have completed or are completing a significant part of their studies in the school of Social Work. An effort is made to interpret and relate the ministry of the Church to the Field of Social Work. The responsibility of the pastor and Church will also be viewed in the light of the programs and agencies providing community services. (Offered alternate years 1976-77).

Staff Second Semester 3 credits

653. *SOCIAL ETHICS AND BLACK EXPERIENCE

First Semester 3 credits

654. SOCIAL CHRISTIANITY AND CULTURAL CHANGE

Second Semester 3 credits

Other courses may be taken in the Atlanta University School of Social Work, with prior approval of Field IV. For further information, see *Bulletin* of A.U.S.S.W.

FIELD V. MINISTRIES OF THE CHURCH (MIN)

A. Homiletics, Worship, and Christian Art

700. COMMUNICATION

This course is designed to meet the needs of students who wish to improve their skills relating to oral and written English, theme organization, reading comprehension, and critical analysis of selected reading materials.

Required for those found deficient in English.

Davis First or Second Semester 2 credits

701. INTRODUCTION TO THEOLOGICAL COMMUNICATION

This course stresses basic principles of communication used in speaking and listening, writing and reading, especially as they apply to the ministries of the Church. It deals with problems of mental and emotional stimulation and response, intellectual conceptualization, personal confidence, and the ability to function as a mature minister and community leader. **Required of M.R.E. Juniors.**

Clark First or Second Semester 3 credits

703. ADVANCED SPEAKING

A study of the principles of public speaking together with practice in developing speaking skills. Designed to help pastors in their church and community speaking other than preaching. Fundamentals of oral communication will be stressed. Speeches and discussions on topics related to the

minister's work will be assigned, using outstanding Black ministers and leaders as models. Conference and committee speaking will be studied as well as parliamentary procedure. (Offered in 1978-79 and alternate years.)

First Semester 2 credits

705. PREPARATION OF SERMONS

A course which deals primarily with the theoretical aspects of sermonizing including a theological understanding of preaching, a psychological-sociological analysis of the formal elements of sermons, an understanding of the significance of personal discipline for effective preaching and concern for seeing the relevance of the Christian Gospel for liberating people in our times. Practical discipline in writing sermons will be involved throughout the course. *Required of Middlers.*

Clark First Semester 3 credits

706. DELIVERY OF SERMONS

A course which deals primarily with the practical aspects of sermonizing including the assignment of members of the class to preaching groups for clinical preaching experiences and the evaluation of such experiences by the instructor and student peers. Television and tape recording devices will be used to enhance the effectiveness of the experience. *Prerequisite: 705. Required of Middlers.*

Clark Second Semester 3 credits

708. RELIGIOUS WRITING AND JOURNALISM

A study of religious writing, editing, and journalism. Designed to help ministers write news releases, edit parish papers and bulletins, and write articles for their church publications. There will be reports and discussions on advanced phases of written communicative skills and disciplines. Each student will be expected to select an appropriate writing project and pursue it during the course with publication in mind. Denominational periodicals will be surveyed. (Offered in 1978-79 and alternate years).

Second Semester 2 credits

709. EXPOSITORY PREACHING

The course deals primarily with the validity and the relevance of the Bible as a foundational resource for Gospel proclamation including principles of biblical interpretation for Gospel communication, experiences in relating biblical meanings to contemporary language and problems, clinical experiences in expository preaching, and the evaluation of such clinical experiences by the instructor and the student peers. Television and tape recording devices will be used to enhance the effectiveness of this course. *Prerequisites: 701 and Required Bible Courses.*

First Semester 2 credits

710. TUTORIAL IN PREACHING

A course designed to give students independent, tutorial, clinical assistance in preaching. Limited to five students. *Prerequisites: 705 and 706.*

Clark Either Semester 1 credit

711. THE PASTOR AS COMMUNICATOR

A course which deals primarily with the parish minister as a key figure in the interpretation of the Christian faith within the local church and in its

transmission to the local community including a theological interpretation of the parish minister's identity as communicator, a psychological-sociological analysis of modes of effective communication, and an analysis of theological meanings for liberation in these times: *Prerequisites: 701 and Required Theology Courses.*

Clark Second Semester 2 credits

713. RESEARCH METHODOLOGY

This course is an introduction in fundamentals of research planning and execution. Each student's approved research design will be supervised by the teacher.

First Semester 3 credits

715. CENTER CHORUS

Choral singing by a group designed for public appearances at The I.T.C. and the community. Open to all qualified students and spouses.

M. Costen First & Second Semesters 1 credit each

716. WORSHIP

A study of the nature, techniques, and conduct of public worship with emphasis on the preparation and administration of services for various denominations and occasions. Due stress is placed on the use of informal worship opportunities and new experimental forms of worship. *Required of M. Div. Juniors.*

M. Costen First or Second Semester 2 credits

717. CHURCH MUSIC

A study of liturgics and Orders of Worship, Hymnody, and Choir Organization. An evaluation of trends, aims and purposes of church music with possible solution to needs and future developments.

M. Costen Second Semester 2 credits

718. BLACK RELIGIOUS MUSIC

A study of religious music as produced particularly by Afro-Americans, including Spirituals, Jubilees, Black Gospel Songs, Anthems, and Instrumental Music. An exploration will be made of the African genesis of Afro-American Music and a critical assessment of contemporary similarities in the music of the two Continents.

M. Costen Second Semester 2 credits

719. ADVANCED SEMINAR IN WORSHIP

A study of the historical and theological foundations of Christian worship. Special attention will be given to current trends in worship, the worship leader, dynamics of the gathered community, and verbal and non-verbal languages. *Prerequisite: 716.*

M. Costen Second Semester 2 credits

721. ART AND SYMBOLISM IN WORSHIP

This course invites an examination of the arts in their relationship to the contemporary need for adapting the traditional Christian symbols to the new conditions of Western culture. Religious symbolism will be dealt with in

broad context including the bearing of the scientific analysis of symbolism on the understanding of the Christian symbols.

First Semester 2 credits

722. RELIGIOUS DRAMA

A study will be made of definitions and philosophies of religious drama, styles in writing, and fundamental elements of production.

M. Costen First Semester 2 credits

723. RELIGIOUS DRAMA*

The educational use of drama is emphasized. Uses in religious education are studied and practiced through choral and play readings and drama productions. Great plays of religious significance are studied and the history of drama in the Church is investigated.

M. Costen Second Semester 2 credits

B. Psychology of Religion and Pastoral Care

727. PSYCHOLOGY OF RELIGION

A study of psychological approaches toward understanding religious life. Explorations of the meaning of behavior in religious experience, human growth, personality structure, social relations, worship, vocational choice, mysticism, and mental health. Emphasis is on individual research, survey of past studies, and observations of religious beliefs and practices. Offered in 1976-77 and alternate years. *Required of M.R.E. Students.*

Pugh Second Semester 3 credits

728. CLINICAL INTRODUCTION TO PSYCHOLOGY OF PASTORAL CARE

Theory and practice of pastoral care are integrated. Appropriate settings (hospitals and the seminary) are utilized for the two parts. The weightier part is the clinical. Two afternoons 1:30-4:30 each week, usually Monday and Friday, clinical contacts and seminars are held. The didactic work is done in the seminary one hour each week. *Required of Middlers.*

Wimberly/McCrary First or Second Semester 4 credits

730. PASTORAL COUNSELING PRACTICE

Limited counseling practice with supervision, utilizing theories and principles of counseling, listening, responding, establishing rapport as a fundamental basis for helpfulness to individuals, couples, families and groups. Limited to 12 students with permission of professor. *Prerequisites: 728 and 732.*

Pugh/Wimberly Second Semester 4 credits

731. ADVANCED CLINICAL ORIENTATION IN PASTORAL CARE

This is a part-time course in theological education at the experimental level. It includes supervised pastoral experiences in clinical settings where opportunities are provided for applying principles of pastoral care in the context of a student's relationships with persons in normal human relationships and crisis situations. *Prerequisite: MIN 728.*

Pugh First or Second Semester 3 credits

732. INTRODUCTION TO PASTORAL COUNSELING AND PSYCHOTHERAPY

To make a comprehensive study of basic psychotherapeutic traits, the clinical interview, catalogue and selectively illustrate the scope of human needs. Also, the theological dimensions of psychotherapy will be studied in terms of professional therapeutic skills and interpersonal relationships. *Prerequisite* 728.

Pugh First Semester 4 credits

733. PSYCHOLOGY OF PASTORAL CARE

Attention is given to the meaning of pastoral care; major psychological contributions to the understanding of pastoral work with individuals, marriage, and family, groups, and crisis experiences. Emphasis is upon conceptualizing one's ministry to persons and families in practical situations. (Offered in 1976-77 and alternate years.)

Wimberly First Semester Only 2 credits

734. PASTOR AND FAMILY LIFE

This course is designed to introduce the students to the dynamics of marriage and family life and how these dynamics can inform the church's counseling and nurturing ministry to couples and families.

Wimberly/J. Jackson Second Semester 4 credits

735. CLINICAL PASTORAL EDUCATION

Georgia Association for Pastoral Care, Inc. (See page 9) The Clinical Pastoral Education program requires the full time of the student for twelve weeks, a calendar quarter. It is an intensive laboratory experience in personal contacts, conversations, clinical seminars, self insights, individual and group supervision. This teaching-learning process aids students of theology in developing professional competence and to act responsibly in pastoral work. Georgia Mental Health Institute offers an alternative plan to the full time quarter which is that a student may spread the basic quarter's C.P.E. training over the school year, all day Monday and an additional half day per week, the latter time to be arranged.

Available Fall, Winter, Spring and Summer quarters
Without Didactic Seminar 6 credits
With Didactic Seminar 8 credits

THEORIES OF PERSONALITY (AU 558)

The aim of this course is to help the student acquire information and knowledge concerning the major traits, dynamic, and wholistic theories of personality.

736. ENCOUNTER GROUP(S)

Establishing emotional rapport through personal interaction. Enrollment: minimum 6, maximum 12 students. *Prerequisite*: 728 and/or 732.

Pugh Second Semester 2 credits

737, 738. COUNSELING PRACTICUM

Application of Theories of Counseling and Psychotherapy to the skilled counseling process, doing Process Records, observing counselors in counseling— individuals, couples, and groups. *Prerequisite*: Successful comple-

tion of an intern year in one or more of the GAPC institutions or its equivalent is required.

Pugh First and Second Semesters 1 or 2 credits

739. DIRECTED STUDY IN PSYCHOLOGY OF RELIGION

Limited to two students per semester.

Pugh First and Second Semester 1 or 2 credits

740. PERSONALITY AND RELIGION

This course could be entitled "Personality Theory for Pastoral Relationships." Such a title would reflect the true intent of the course. The basic purpose of the course is to help the student develop a cognitive grasp of personality growth and development in order to enable better relationships with and among persons. Some grasp of the dynamics of personality growth is essential to develop adequate pastoral relationships, whether one is pastoring a church, teaching a class, working in a community organization, or doing pastoral counseling.

Wimberly Second Semester 3 credits

C. Church Leadership and Administration

742. CHURCH POLITY

A study of the structure and practices of the respective denominations constituent of I.T.C., and other. *Required by the denominations indicated.*

a. African Methodist Episcopal	Wilkerson
b. Baptist	McCall
c. Christian Methodist Episcopal	Dopson
d. Church of God in Christ	Haney
e. United Methodist	Jones
f. United Presbyterian, U.S.A.	Costen

Second Semester 2 credits

743-744. FIELD EDUCATION REFLECTION

This course is designed to provide an exposure to ministry and to assist in the integration of all disciplines of the student's previous and current classroom learnings. Each student is assigned both secular and church placements for a maximum of six (6) hours per week wherein tasks of ministry are explored and performed.

In addition to this exposure a weekly seminar/reflection session is held in small groups for a scheduled two (2) hour period. This course is required for graduation and is designated for the senior year. It should be taken in Sequence.

First and Second Semesters
Houston and others 2 credits each semester

745. CHURCH ADMINISTRATION

The minister's role in the art and science of planning and directing the work of the local parish. Principles and procedures for relevant programs, structures

and finances, the development of effective layworkers, the guidance of staff workers, and the development of spiritual values will be studied as means of developing purposeful and meaningful administration. *Required of Middlers*
M. Jackson First or Second Semester 3 credits

746. CHURCH STEWARDSHIP AND FINANCE

An intensive study of the principles and methods of Christian stewardship, church budget making, sound practices in money raising for local expenses, benevolences, denominational expenses, building improvements, and church accounting.

Second Semester 2 credits

747. MINISTERIAL LEADERSHIP

Techniques of leadership for ministers. Attention is given to such subjects as the elements of effective leadership and methods of self-analysis and self-improvement for leaders. The course also offers training in conducting group discussions and demonstrations, and counseling as a leadership method.

Second Semester 2 credits

749,750. ADVANCED FIELD EDUCATION

A Supervised Practice of a more advanced nature in which student works under individual or small group supervision of a member of Faculty. Individual learning contacts are to be negotiated for one (1) credit per semester.

Houston Both Semesters 1 credit each

751. FIELD INTERNSHIP

Full-time supervised practice during an INTERNSHIP YEAR while assigned to a Parish, Social Agency, Educational or other Institutions related to the helping professions. Interns may be exempt from Min. 743-744 depending on Supervision and Nature of the exposure. Exemptions must be negotiated and approved prior to entry into the Internship. Application for Internship should be filed at least three (3) months prior to the beginning of the Internship to be experienced.

Without Directed Study 8 credits

Houston and others With Directed Study 12 credits

752. SEMINAR: PARISH ADMINISTRATION

An advanced study of selected problems in church administrative abilities. Attention is also given to administrative procedures in annual conference and association and convention offices as well as in councils of churches.

Second Semester 2 credits

D. Christian Education

761. THE CHURCH'S EDUCATIONAL MINISTRY

This course seeks to understand the meaning and significance of the church's educational ministry, undertakes an intensive investigation of each component of the curriculum design as developed by the Cooperative Curriculum

Project, and provides opportunities for exercises in teaching-learning units.
Required of M.R.E. first year.

J. Jackson First Semester 4 credits

762. ADMINISTRATION AND LEADERSHIP DEVELOPMENT

This course seeks to understand the fundamental principles which govern the organization and administration of the church's educational ministry, explores the developing functions of leadership in the local church or the Christian community, and examines current programs for the development of leaders for the church's educational ministry. *Required of M.R.E.*

Goodwin Second Semester 4 credits

763. THE BIBLE IN CHRISTIAN EDUCATION

The analysis of the content of the Bible for educational purposes; criteria for the selection and use of biblical materials for meeting the needs, interests, and capacities of different age groups. (Offered in 1976-77 and alternate years.)

Goodwin Second Semester 2 credits

764. FOUNDATIONS OF CHRISTIAN EDUCATION

This course examines the biblical, theological, philosophical, psychological, and socio-cultural foundations of Christian education, and relates them to the current curriculum plan of the Cooperative Curriculum Project. It identifies the roles of the pastor and the director in the church's educational ministry. *Required of M. Div. students.*

J. Jackson Second Semester 3 credits

765. KING: EDUCATIONAL LEADERSHIP MODEL FOR SOCIAL CHANGE

The purpose of this course is to present Dr. King as a social educator who, by the presentation of selected ideas, influenced a significant segment of 20th Century American Society toward positive social change.

Particular attention will be given to his ideas, methods and achievements as they apply to the leadership concerns of pastors and Christian educators.

Goodwin Second Semester 3 credits

767. THE CHURCH'S MINISTRY WITH CHILDREN

Findings from child psychology are used to discover the ways in which children grow into Christian personalities. Consideration is given to the building of a program to meet the needs of the particular environment in which it is to be applied. Emphasis is placed on the importance of developing the whole person by providing opportunities for physical, mental, social, emotional, and spiritual growth.

Goodwin First Semester 3 credits

768. THE CHURCH'S MINISTRY WITH YOUTH

The basic philosophy and object of leadership and curriculum trends in the Christian education of youth are studied. The psychological, social, and cultural developments which determine methods, materials, and activities are examined. Consideration is given to the place of the home, church, school, and community as cooperating agencies in Christian growth. The focus will be on providing opportunities for study, worship, fellowship and service in response to the need for developing into a whole person.

Goodwin Second Semester 3 credits

769. THE CHURCH'S MINISTRY WITH ADULTS

In this course explorations are made into the psychological, social, cultural, and theological understandings of the young, middle, and older adults; challenging opportunities for responsible sharing in the mission of the church; and techniques of motivation.

Goodwin First Semester 3 credits

771-72. FIELD EDUCATION: TEACHING

Field work provides an opportunity for important Christian service and the occasion for the student to develop skills. The academic training is made practical in field work activities. The work is pursued in churches or social agencies such as the YWCA, orphanages, and church-related settlement houses. First-year students usually teach. Each student has weekly conferences with his or her supervising professor for purposes of guided planning.

Goodwin First and Second Semesters 1 or 2 credits each

773-74. FIELD EDUCATION: ADMINISTRATION

A continuation of field education as provided in courses 771 and 772 with second-year students usually serving in an administrative capacity.

Jackson/Goodwin First and Second Semesters 1 or 2 credits each

775. AUDIO-VISUAL AIDS

Standards and appreciation for visual and audio art forms are considered; the purposes of audio-visual aids are studied; methods of using educational motion pictures, slides, filmstrips, and recordings will be demonstrated and the operating of equipment taught; uses of video tape and the TV are included.

J. Jackson First Semester 2 credits

776. SEMINAR: GROUP DYNAMICS

Participants learn the distinctive qualities of group leader, member, and observer; techniques of studying groups, and developing group leadership, multiple leadership, and the dynamics of interpersonal relationships within the group will be studied.

J. Jackson Second Semester 2 credits

777. SEMINAR: PROBLEMS AND TRENDS IN CHRISTIAN EDUCATION

Participants will engage in a rapid survey of the history of Christian education and make critical analyses of the major cultural, psychological, and theological problems and trends. The content will also include religion and public education, curriculum planning, programs for the development of leaders, and interdenominational cooperation. (Offered 1976-77 and alternate years.)

J. Jackson First Semester 2 credits

778. SEMINAR: THE TEACHING-LEARNING PROCESS

An intensive study of the teaching-learning process as an area of the Christian education curriculum; new dimensions of learning; theories of communication; learning situations; factors affecting learning and freeing capacity to learn.

J. Jackson Second Semester 3 credits

779. THE CAMPUS MINISTRY

This course is concerned with the historical development of the campus ministry, and the philosophical and methodological problems of campus religious work. There will be also a study of contemporary work being done to make the life of the church more relevant to the university.

J. Jackson First Semester 2 credits

780. THE COLLEGE TEACHING OF RELIGION

This course is concerned with the theories, practices, and methods of teaching religion on both private and public college campuses.

J. Jackson Second Semester 2 credits

781. DIRECTED STUDY IN CHRISTIAN EDUCATION

Goodwin/J. Jackson Repeatable Either Semester 2 credits each

784. CHRISTIAN EDUCATION AND THE BLACK CHURCH

An examination of the origin, extent, influence, potential, and direction of religious education in the Black church.

J. Jackson Second Semester 3 credits

788. THE CHRISTIAN EDUCATOR AS CHANGE AGENT

This course includes the theory, ways and means that the Christian educator can engage in planned change in the local church or other related settings: through the discovery of needs, diagnosis, goal setting, planning strategies, and evaluation. The course will center also on the Christian educator functioning as a change agent, and his relationship with those with whom he works.

J. Jackson Second Semester 2 credits

723. RELIGIOUS DRAMA*

See description in Department of Homiletics, Worship and Christian Art.

CSO 638. EDUCATION FOR MISSION AND EVANGELISM*

See description under Church and Society.

IN-CAREER D. MIN. AND S.T.D. COURSES

The In-Career D. Min. and S.T.D. programs consist of advanced courses provided by participating schools in the Atlanta Theological Association. A current list of courses approved for these programs is available upon request. The following courses within that list have been developed specifically for the In-Career D. Min. and S.T.D. programs.

ATA 003. MINISTRY IN INDUSTRY

This course is designed to provide opportunities for Students from the participating Seminaries to experience the world of Labor and Industry from both Management and Labor perspectives. Jobs with pay are secured by the ATA. Weekly Seminars are held for purposes of sharing experiences, relevant in-put from management and labor, and to reflect on Theological and ethical implication for ministry. A laboratory fee is charged for this course.

Houston Summer Only 4 credits

**ATA 008. SYMPOSIUM ON RELIGION AND THE ELDERLY IN
TODAYS WORLD**

4 credits

ATA 401. SEMINAR ON MINISTRY

Basic seminar on ministry theory and career analysis required of all In-Career D. Min. students.

6 credits

ATA 462. THE DEVELOPMENT OF MODERN PASTORAL COUNSELING

Modern history of pastoral counseling, its roots in theology, psychoanalysis, existential and humanistic psychology.

3 credits

ATA 485. COUNSELING PRACTICE

In each quarter the student engages in from two to four hours of counseling per week under supervision. Assigned readings and appropriate didactic materials are included. (Students will register for ATA-485a, ATA-485b, ATA-485c, and ATA-485d for a minimum total of 18 semester credits.)

6 credits per semester

ATA 489. DIRECTED STUDY

For D. Min. and S.T.D. use.

Credit as assigned

ATA 490. S.T.D. DOCTORAL PROJECT SEMINAR

4 semester credits

ATA 492. S.T.D. DOCTORAL PROJECT SEMINAR

4 semester credits

ATA 494. S.T.D. DOCTORAL PROJECT SEMINAR

4 semester credits

ATA 496. DOCTORAL PROJECT SEMINAR

This course is designed for D.Min. and S.T.D. students who are beginning to work on their project dissertations. The purpose of the course is to introduce the student to evaluation research, especially those areas of research dealing with selecting a problem, choosing an appropriate theory, and building an adequate research design. The major emphasis will be upon how to gather, organize, evaluate, and interpret data collected for the purposes of writing a project dissertation.

Wimberly First or Second Semester 6 credits

ATA 497. S.T.D. DOCTORAL PROJECT SEMINAR

6 semester credits

ATA 499. DOCTORAL PROJECT SUPERVISION

For D. Min. and S.T.D. use in cases where ATA 496 registration is inappropriate.

No credit

ATA 598. LIBRARY USE

No credit

ATA 741. CLINICAL PASTORAL EDUCATION

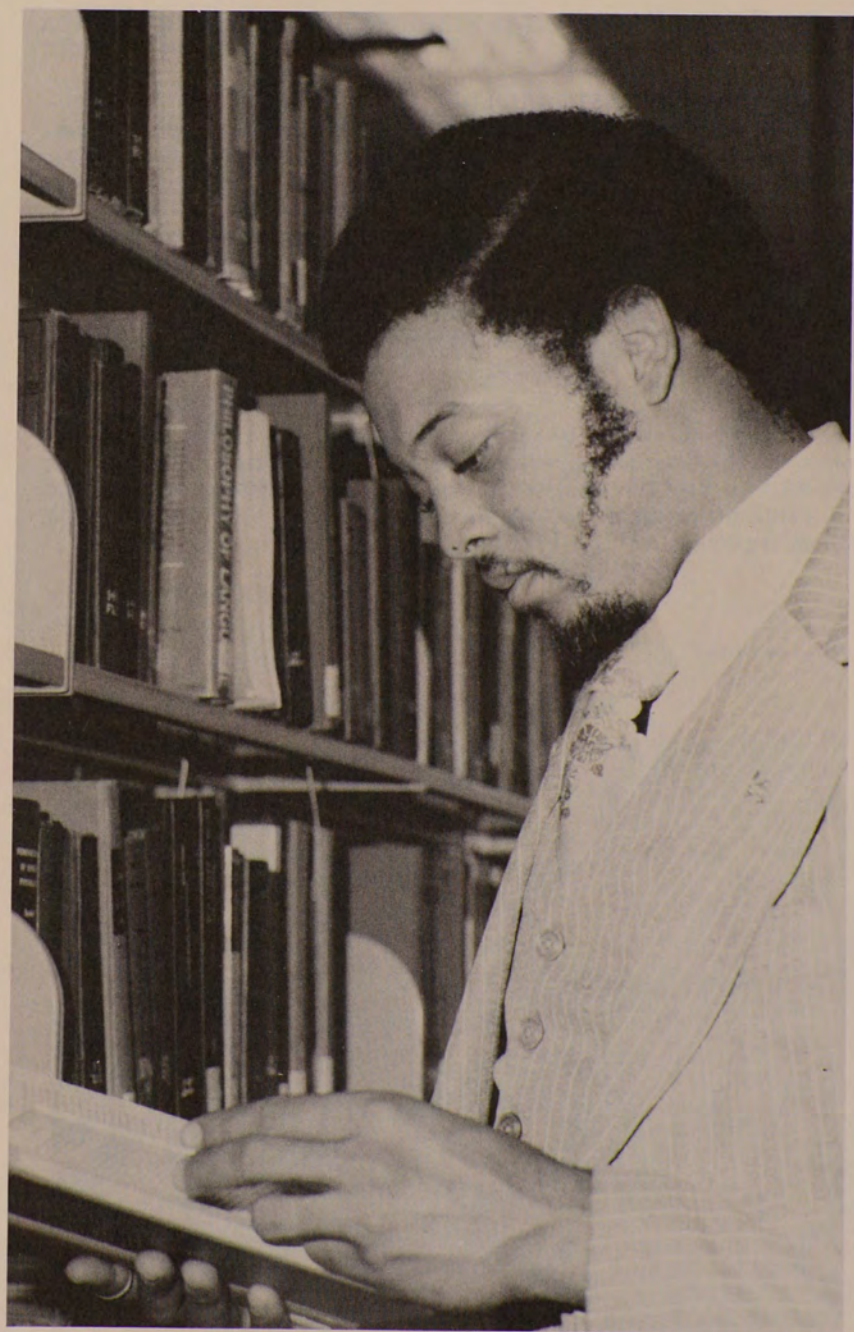
In-career D. Min. students can earn a total of six semester credits or nine quarter credits for a clinical quarter. In addition a student may earn two semester credits or three quarter credits during or in connection with the full-time clinical quarter if that clinical program includes a distinct didactic component approved by the director of clinical programs of the school in which the student is registered. These additional credits may be applied to the academic course requirements.

Without Didactic Seminar 6 semester or 9 quarter credits

With Didactic Seminar 8 semester or 12 quarter credits



The Library



STUDENT SERVICES



Student Services

ACADEMIC AWARDS AND HONORS

The following awards and honors are available to qualified students.

The Interdenominational Theological Center

Election to the International Society of Theta Phi, for excellence in scholarship.

The Faculty Scholarship Award to the M. Div. candidate who has achieved the highest academic record during seminary career.

The Faculty Scholarship Award to the M.R.E. candidate who has achieved the highest academic record during seminary career.

Gammon Theological Seminary

The Willis J. King Award presented annually to the most outstanding I.T.C. student in the field of Old Testament Studies during the year, regardless of his denomination.

The Frank W. Clelland Award to the M.Div. candidate who has shown the highest ability in New Testament and Homiletics.

The Joseph W. Queen Award to the most helpful student in out-of-classroom services.

The Smith-Taylor Award to the graduating Senior who has shown the most progress in written English during seminary career, and who gives promise of special ability in religious journalism.

The James S. and Emma E. Todd Award to the Senior who has consistently manifested sterling Christian character, and who has shown most evidence of growth in the development of the gifts and graces essential to the Christian Ministry.

The Ada S. Watters Award to the student who excels in the reading of the Scriptures and/or in Hymnology.

The Bishop Charles F. Golden Merit—Social Vision Scholarship Award to the Gammon student who has achieved an outstanding scholastic average and who has participated in community and social action.

The Bishop Willis J. King Scholarship Award—Old Testament to the Gammon student who exemplifies unusual scholarship and maintains the highest average in Old Testament studies.

The Henry Joyner, Jr. Scholarship Award is given each year to two United Methodist students and to two non-United Methodist students on the basis of following criteria:

- A. high scholastic average in Systematic Theology and its application to current social issues
- B. exemplification by word and deed of a spirit of goodwill and interdenominational understanding within The ITC community

C. promotion of interracial understanding both in and beyond the Atlanta community

D. dedication and commitment to serious study and preparation for the Christian ministry within his or her respective denomination.

Anonymous Scholarship Award for Two United Methodist African students given each year at awards time, with the actual cash designation to begin at the beginning of the Fall term in September extending through the nine month academic year. The awards will be granted on either a semester or a school year basis and related to monthly scholarship aid.

Walter G. Muelder Student Lecturership in Social Ethics, with student selected and the lectures sponsored by the Professor of Social Ethics.

The John A. Simpson Award is given each year to that person who expresses an interest in the parish ministry, who has an academic average of at least B and above, and who has exemplified responsibility in moral conduct and active participation in the total Gammon-ITC community.

The Mary W. Clapp Award is given each year to the United Methodist Junior who shows the most promise in academic orientation and commitment to a Christian vocation and who has exemplified by action and articulate word a positive commitment to the development of a Christian community.

The M. J. Jones Award to the student of high academic quality and who is also willing to participate in physical labor.

The Ralph Felton Award to the student who expects to dedicate his or her ministry to the rural/urban community within United Methodism.

The John A. Greene Award to the United Methodist student who is a candidate for the Master of Divinity degree and whose scholarship aims and degree purposes reflect the spirit of concern, sensitivity and love for people that has been long characterized and given expression in the tradition of the John A. Greene family.

The Dr. L. L. Haynes, Sr. Award to be given each year to a United Methodist senior student who has exhibited the most growth, development and potential as an effective communicator of the gospel. Accompanying his or her ability, he or she should have retained an average of B or above.

The Dr. J. W. Heyward, Jr. Award to be given to the Middler who has exemplified high academic growth in the area of communication, preparation and delivery of sermons; who has given careful attention to his or her public department in the area of worship and who has demonstrated high potential in the area of Church Administration in preparation for Pastoral Ministry. Accompanying his or her ability, he or she should have retained an average of B or above.

The William Lumpkin Memorial Award to be given to the student who shows inclination that he or she is sensitive to the needs of the aging, who is a major in Pastoral Care and who has exemplified through the academic and the practical his or her concern and interest in this emphasis at the level of Pastoral Care.

The Mullin Award to the Student Pastor who has exemplified growth and concern in Field Education and is nominated by that Department for an award as having shown the greatest potential as a Parish Minister.

The Robert Tolbert Scholarship Award (criteria to be published in the next issue of the catalog)

The Reverend Godfrey L. Tate, Jr. Award (criteria to be published in the next issue of the catalog)

The Dr. Gerald O. McCulloh Award to the student who has exemplified his or her proficiency in Church History and is nominated by the United Methodist and/or the Department of Church History as having been the best United Methodist potential church historian during his or her academic career here at The Interdenominational Theological Center.

The Anonymous Donor Award.

Elected Crusade Scholars.

United Methodist Travel Seminar Recipients.

Absalom Jones Theological Institute

The Dr. Tollie L. Caution Award to the AJTI seminarian who has maintained the highest academic average for the year.

Mason Theological Seminary

C.H. Mason Achievement Award given to the student with the highest academic average during the current academic year.

Dean's Award given by the Dean of Mason Seminary to the student who makes the greatest contribution to his school through the use of his skills and spiritual resources during the academic year.

Pioneer Scholarship (2) an award for both significant academic achievement and outstanding contribution to the Church of God in Christ through Mason Seminary, local congregation, jurisdiction or national church.

Morehouse School of Religion

The Mathalathian Award to the M.Div. candidate with the highest academic record.

The New Era Baptist Congress Scholarship Award to the M.Div. Middler or Senior having the highest academic average.

The New Era Baptist Congress Best Man of Affairs Award to the M.Div. student with the most outstanding record in activities and achievements.

The Mt. Pleasant Award to the M. Div. Middler or Senior for being the best all round student.

The William R. Boone Award given to the best all round student of the Morehouse School of Religion.

The Walker Baptist Association's Robert L. Boyd Award to the Middler having the highest academic average.

The Reverend William and Gertrude Jackson Memorial Award to a Junior who has exemplified responsibility in moral conduct and active participation in the total Morehours—I.T.C. Community.

The S.A. Owens' Award to a Middler or Junior for being the best all around student (to be applied to his next school year's account).

The Mt. Pleasant Award to the M. Div. Middler or Senior for being the best all around student.

The C. L. Fisher Loan Fund is an emergency fund provided for Baptist students.

Phillips School of Theology

The Alumni Award to the student with the highest average in New Testament Studies during the current year.

The Director's Award to the student who has made the best record as a Pastor during the year.

The Milner L. Darnell Memorial Award given by the Dean's Council to a student on the basis of academic achievement, character and personality, who demonstrates outstanding potential for an effective Christian Ministry.

Johnson C. Smith Theological Seminary

The Johnson C. Smith Award to the graduating Senior with the highest academic ranking.

Turner Theological Seminary

The Sammie F. Coan Memorial Award, established by Dr. J. R. Coan in memory of his wife, presented yearly to the M. Div. candidate with the highest academic achievement during his seminary career.

The James H. Clark Preaching Awards established by Dr. Issac R. Clark in honor of his father, presented yearly to Middlers and Seniors showing the most progress in the Homiletics department.

The Henry McNeil Turner Memorial Preaching Awards presented annually to the Middler and the Senior who have manifested the most consistent and conscientious study and progress in Homiletics.

The John A. Middleton Scholarship is awarded annually by the John A. Middleton Memorial Education Foundation to a student enrolled in Turner Theological Seminary. This scholarship is over and above the denominational contribution so as to free the student for academic pursuit with the hope that the recipient will become a scholar.

Student Christian League Award

The Edwin T. Bush Memorial Scholarship Fund is in memory of Brother Edwin T. Bush, who was at The Interdenominational Theological Center during the School Year 1971-1972. The annual award is given by the Student Christian League to an international student who has portrayed leadership and scholarship within The I.T.C. Community.

The United Church of Christ Scholarship Fund

The United Church of Christ Scholarship Fund is available to United Church of Christ students, on the approval of the Scholarship Committee of the Southeast Conference.

The Cassandra Marsh Norman Service Award is presented annually to a graduating senior who fulfills the following requirements:

Must have served as a library student assistant in circulation for a period of two or more years.

Must have exemplified unquestionable concern to learn and apply library procedures to better serve his fellow students and other library users.

INFORMATION PERTAINING TO VETERANS*

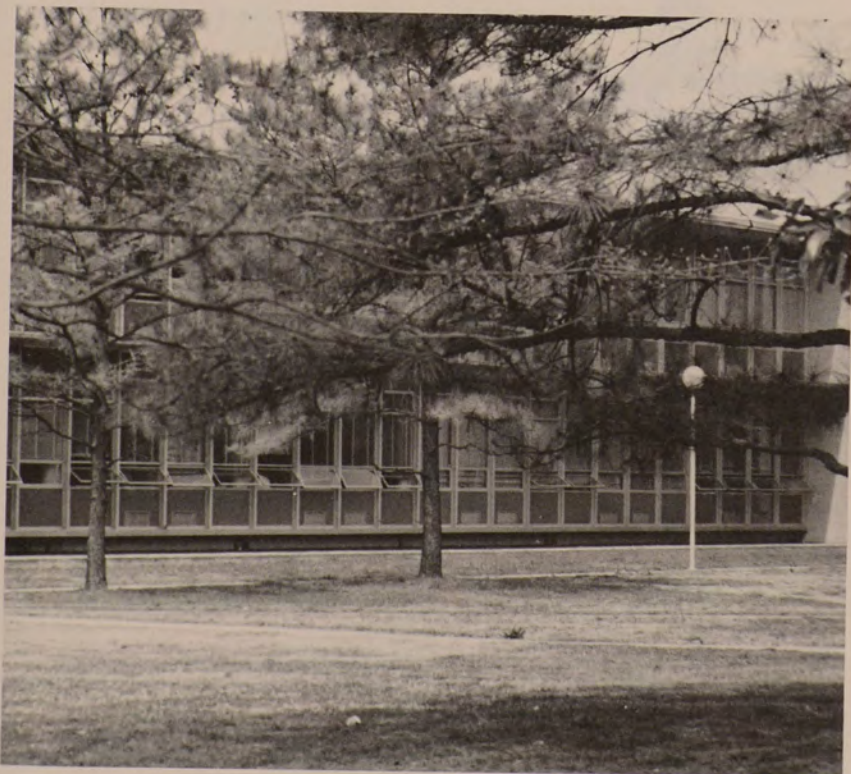
Proposed changes to VA Regulations were published in the Federal Register, dated May 27, 1975. Four of these changes are listed below:

1. Educational benefits should be discontinued when the veteran or eligible person ceases to make satisfactory progress. No student will be considered to have made satisfactory progress when he or she fails or withdraws from all subjects undertaken (except when there is a showing of extenuating circumstances) when enrolled in two or more unit subjects.
2. Any changes in the number of credit hours or the clock hours of attendance or instruction or any other modification in the course as certified at enrollment must be reported promptly to the Veterans Administration.
3. Information regarding any changes or an interruption or termination of training must be reported during or immediately after the end of the month in which the event occurred.
4. An official withdrawal date under policies of the school will not serve as the effective date of discontinuance of training allowance if actual attendance ceased before the withdrawal date.

In summary, it appears that:

1. The VA will no longer pay students who are failing, not attending classes, or not otherwise making satisfactory progress toward an educational objective.
2. If a student stops attending a class or classes, it must be promptly reported to the Veterans Administration.
3. Such changes must reach the Veterans Administration the first of the month after the student stops attending.
4. The effective date is not the official date of withdrawal, but the last date of attendance.
5. Failure to comply with the above may jeopardize further VA benefits.

*For information regarding the grading system, class standing, scholastic standing, class attendance, conduct code and special studies see the entire section on *Academic and Special Programs*.



Faint, illegible text, possibly bleed-through from the reverse side of the page.



ADMINISTRATION

(1979-1980)



Administration (1979-1980)

BOARD OF TRUSTEES (1979-1980)

DR. THELMA C. ADAIR
10 West 122nd Street
New York, New York 10027
Tel. No. (212) 348-2532

BISHOP JOHN H. ADAMS
2812 Kendall Lane
Waco, TX 76705
Tel. No. (817) 799-5286

BISHOP L. SCOTT ALLEN
P.O. Box 18750
Charlotte, North Carolina 28218
Tel. No. (704) 535-2260

BISHOP H. I. BEARDEN
208 Auburn Avenue, N.E.
Atlanta, Georgia 30303
Tel. No. (404) 659-2012

MR. F. M. BIRD, SR.
Haas-Howell Building
77 Poplar Street
Atlanta, Georgia 3030
Tel. No. (404) 522-2508

THE REV. CHARLES BUTLER
6632 Stuart at Concord
Detroit, MI 48207
Tel. No. (313) 923-1600

BISHOP D. A. BURTON
Presiding Bishop Eastern Penn
Church of God in Christ
1400 Wistar Drive
Wyncote, PA 19095
Tel. No. (215) 763-5400

BISHOP WILLIAM R. CANNON
Resident Bishop, Atlanta Area
The United Methodist Church
159 Forrest Avenue, N.E.
Atlanta, GA 30303
Tel. No. (404) 639-7638

BISHOP C. D. COLEMAN
1616 E. Illinois Avenue
Dallas, TX 75216
Tel. No. (214) 374-4848

BISHOP JOSEPH C. COLES, JR.
2001 Martin Luther King, Jr., Dr., SW
Suite 423
Atlanta, GA 30310
Tel. No. (404) 752-7800

THE REV. WILLIAM G. GILLESPIE
7328 RaVinia Street
St. Louis, Missouri 63115
Tel. No. (314) 382-1734

BISHOP CHARLES F. GOLDEN
Resident Bishop
5250 Santa Monica Blvd.
Los Angeles, CA 90029
Tel. No. (213) 665-5771

DR. ARTHUR R. HALL
Bradley Hills Presbyterian Church
6601 Bradley Boulevard
Bethesda, Maryland 20034
Tel. No. (301) 365-2850

DR. W. T. HANDY, JR.
7400 Exchange Place
Baton Rouge, LA 70806
Tel. No. (504) 924-1778

DR. ROBERT E. HAYES, SR.
President, Wiley College
Marshall, TX 75670
Tel. No. (214) 938-8341

PROFESSOR KENNETH E. HENRY
Faculty Representative
671 Beckwith Street, S.W.
Atlanta, GA 30314
Tel. No. (404) 525-5926

DR. A. J. HINES
8435 Sterlingshire
Houston, TX 77028
Tel. No. (713) 633-2410

MR. DONALD L. HOLLOWELL
Director of EEOC
1389 Peachtree Street, N.E.
Atlanta, GA 30309
Tel. No. (404) 881-2171

BISHOP JOSEPH A. JOHNSON
Presiding Bishop
Fourth Episcopal District
Christian Methodist Episcopal Church
109 Holcomb Drive
Shreveport, Louisiana 71103
Tel. No. (318) 222-6284

BISHOP CHESTER A. KIRKENDOLL
308 10th Avenue, West
Birmingham, Ala. 35204

DR. MARTIN LUTHER KING, SR.
Pastor Emeritus
Ebenezer Baptist Church
2873 Dale Creek Drive, S.W.
Atlanta, GA 30318
Tel. No. (404) 688-7263

DR. EMMANUEL McCALL
3280 Hazelwood Drive, S.W.
Atlanta, GA 30311
Tel. No. (404) 873-4041

DR. GERALD O. McCULLOH
2110 Ashwood Avenue
Nashville, Tennessee 37212
Tel. No. (615) 297-5170

DR. WILLIAM McKEE
Executive Minister
Educational Ministries
American Baptist Churches, USA
Valley Forge, PA 19481
Tel. No. (215) 768-2000

DR. G. D. McKINNEY
5848 Arboles
San Diego, California 92120
Tel. No. (714) 287-2284

DR. JOSEPH McKINNEY
2311 M. Street, N.W.
Washington, D.C. 20037
Tel. No. (202) 337-3930

MR. PAUL E. MANNERS
1814 First National Bank Tower
2 Peachtree Street, N.W.
Atlanta, GA 30306
Tel. No. (404) 524-0336

DR. BENJAMIN E. MAYS
3316 Pamlico Drive, S.W.
Atlanta, GA 30311
Tel. No. (404) 696-5792

BISHOP E. P. MURCHISON
Presiding Bishop
Second Episcopal District
6322 Elwynne Drive
Cincinnati, Ohio 45236
Tel. No. (513) 751-8469

BISHOP ROY C. NICHOLS
Resident Bishop
Pittsburgh Area
The United Methodist Church
223 Fourth Avenue
Pittsburgh, PA 15222
Tel. No. (412) 562-1580

MR. FRANK PORTEE
Student Representative
The ITC
Atlanta, GA 30314

DR. THOMAS J. PUGH
Faculty Representative
The ITC
Atlanta, GA 30314
Tel. No. (404) 522-1742

DR. HARRY V. RICHARDSON
President Emeritus, ITC
3127 Mangum Lane, S.W.
Atlanta, GA 30311
Tel. No. (404) 344-1798

MR. HERBERT R. SHACKLEFORD
Student Representative
The ITC
Atlanta, GA 30314

BISHOP P. RANDOLPH SHY
Trustee Emeritus
894 Falcon Street, S.W.
Atlanta, GA 30311
Tel. No. (404) 753-2553

THE REV. RUDOLPH SMITH
1609 Ezra Church Drive, N.W.
Atlanta, GA 30314
Tel. No. (404) 755-0966

BISHOP REMBERT STOKES
531 Belmont Park North (Apt. 709)
Dayton, Ohio 45405
Tel. No. (513) 222-7559

BISHOP JAMES S. THOMAS
1226 North Market Street
Canton, OH 44714
Tel. No. (216) 453-7781

DR. ROBERT THORNBURG
P.O. Box 871
Nashville, TN 37202
Tel. No. (615) 327-2700

DR. ROBERT THREATT
President, Morris Brown College
643 M. L. King, Jr. Drive, S.W.
Atlanta, GA 30314
Tel. No. (404) 525-7831

DR. FRANK T. WILSON, Chairman
R.D. 1, Box 84A
Elkdale Road
Lincoln University, PA 19352
Tel. No. (215) 932-3811

DR. ROY L. H. WINBUSH
235 Walter Street
Lafayette, Louisiana 70501
Tel. No. (318) 233-2478

THE REV. ARCHIBALD J. CAREY
Trustee Emeritus
Circuit Court of Cook County
1605 Civic Center
Chicago, Illinois 60602
Tel. No. (312) 285-8300

MR. L. D. MILTON
Trustee Emeritus
P.O. Box 4485
Atlanta, GA 30303
Tel. No. (404) 659-5959

DR. GRANT S. SHOCKLEY, President
The ITC
Ex-Officio
Atlanta, GA 30314
Tel. No. (404) 522-1772



**THE EXECUTIVE STAFF
(1979-1980)**

THE INTERDENOMINATIONAL THEOLOGICAL CENTER

671 Beckwith Street, S.W.
Atlanta, Georgia 30314

GRANT S. SHOCKLEY President
B.A., 1942, Lincoln University, Pennsylvania; M.Div., 1945, Drew
Theological Seminary, Drew University, Madison, N.J.; M.A., 1946,
Ed.D. 1952, Columbia University—Union Theological Seminary and The
Advanced School of Education, New York

THOMAS J. PUGH Vice President for Academic Services
A.B., 1940, Clark College; M.Div., 1942, Gammon Theological Seminary;
M.A., 1947, Atlanta University; Ph.D., 1955 Boston University; Post
Doctoral Study; University of Chicago and The University of
Pennsylvania
522-1742

CHARLES J. SARGENT Vice President for Administrative Services
B.A., 1949, Virginia Union; M.Div., 1952, Drew University
525-1314

EDITH THOMAS Registrar/Director of Admissions
A.B., 1948, Clark College; M.A., 1963, Atlanta University; Additional
Study Boston University, 1972; M.R.E., 1976 The Interdenominational
Theological Center
522-1743

ELIZABETH LITTLEJOHN Controller
B.S., 1970, Florida A & M University
522-1741

**THE SUPPORT STAFF
(1979-1980)**

BARBARA G. ARRINGTON Administrative Secretary to the
525-1314 Vice President for Administrative Services

LORETTA G. BARNES Secretary—Continuing Education Program
525-6827

BETTY R. BUTLER Supervisor, Faculty Officer
525-5926

JOSEPH and ELIZABETH CATES Director of Maintenance
522-2899 Services, General Maintenance Services Company

SHERRIE COBB Secretary to the Controller
522-1741

VALERIE M. CRAWFORD Secretary to the Dean of Phillips
525-2741 School of Theology

LENORA C. EVANS Director of Federal Programs
522-1741

- ROSA M. HARDY Accounting Clerk
525-5926 x26
- ROSA L. HOLMES Administrative Assistant to the Dean of
525-7802 Turner Theological Seminary
- BARBARA C. HOLTON Secretary-Psychology and Pastoral Care
525-7456
- EUGENIA D. JOHNSON Secretary to the Vice President for Academic
522-1742 Services
- HATTIE R. JOHNSON . . Administrative Assistant to the Dean of Johnson C.
524-1933 Smith Theological Seminary
- LYSBIA LYNETTE LAND . . .Secretary to the Dean of Morehouse School of
688-6743 Religion
- MARIAN McDONALD Secretary to the Dean of Gammon Theological
524-2114 Seminary
- MITTIE G. McGHEE Associate Registrar
522-1743
- MONA M. MILLIKAN Secretary to the Registrar and Assistant Director
522-1743 of Publicity
- CHRISTINE R. PORTER Administrative Assistant to Representative of
525-8276 Absalom Jones Theological Institute
- BEVERLY RENEE STONE Business Manager, Morehouse School
688-6743 of Religion
- SYLVIA D. WALLER Secretary to the Librarian
522-1744
- CYNTHIA N. WARNER Secretary to the Dean of Charles H. Mason
525-0021 Theological Seminary
- MINNIE J. WRIGHT Administrative Secretary to the President
522-1772
- PAMELA A. WYATT Secretary to the Faculty
525-5926

FACULTY, ALUMNI



Faculty

1979-80

FULL-TIME

- ROBERT C. BRIGGS**, Professor of New Testament Interpretation; Field Chairperson
A.B., 1937, Southwestern State University; Th.M., 1943, Th.D., 1946, Southern Baptist Seminary; Post Doctoral Study: 1954-55, University of Edinburgh; 1955-56, University of Zurich; 1963-64, 1970-71, University of Tübingen; 1964, University of Marburg
- ISAAC R. CLARK**, Professor of Homiletics; Department Chairperson
B.A., 1951, Wilberforce University; B.D., 1952, Payne Theological Seminary; Th.D., 1958, Boston University School of Theology; Post Doctoral Study: Union Theological Seminary
- MELVA WILSON COSTEN**, Assistant Professor of Music
A.B., 1953, Johnson C. Smith University; M.A.T.M., 1964, University of North Carolina; Ph.D., 1978, Georgia State University
- JOHN C. DIAMOND**, Professor of Philosophy and Theology; Field Chairperson
B.S., 1951, Hampton Institute; S.T.B., 1958, Boston University School of Theology; Ph.D., 1965, Boston University Graduate School
- BENNIE EUGENE GOODWIN**, Assistant Professor of Christian Education
B.A., 1956, Barrington College; M.R.E., 1965, Gordon-Conwell Theological Seminary; M.Ed., 1972, University of Pittsburgh; M.A., 1973, Pittsburgh Theological Seminary; Ph.D., 1974, University of Pittsburgh
- KENNETH E. HENRY**, Associate Professor of Church History; Field Chairperson
B.A., 1956, Jarvis Christian College; B.D., 1959, S.T.M., 1969, Yale Divinity School; Ph.D. Candidate: Yale University
- JONATHAN JACKSON**, Professor of Christian Education; Department Chairperson
B.A., 1953, Clark College; B.D., M. Div., 1956, Gammon Theological Seminary; M.A., 1957, Scarritt College; Th.D., 1964, Boston University School of Theology
- MANCE C. JACKSON**, Director of Continuing Education/Associate Professor of Church Leadership and Administration
B.A., 1960, California State College; M.Div., 1966, The Interdenominational Theological Center
- THOMAS J. PUGH**, Professor of Psychology and Pastoral Care
A.B., 1940, Clark College; M.Div., 1942, Gammon Theological Seminary; M.A., 1947, Atlanta University; Ph.D., 1955, Boston University; Post Doctoral Study; University of Chicago; University of Pennsylvania

- GRANT S. SHOCKLEY**, President; Professor of Christian Education
 B.A., 1942 Lincoln University, Pennsylvania; M.Div., 1945 Drew
 Theological Seminary, Drew University, Madison, N.J.; M.A., 1946,
 Ed.D. 1952, Columbia University—Union Theological Seminary and The
 Advanced School of Education, New York
- JAMES M. SHOPSHIRE**, Assistant Professor of Sociology of Religion
 B.A., 1963, Clark College; B.D., 1966, The Interdenominational Theo-
 logical Center; Ph.D., 1975, Northwestern University
- WARREN THOMAS SMITH**, Associate Professor of Church History
 Maryville College 1942-1943;
 B.A., 1945, Ohio Wesleyan University; B.D., 1948, Emory University;
 Ph.D., 1953; Boston University; Post Doctoral Study, Emory University
 1974
- GEORGE B. THOMAS**, Associate Professor of Church and Society; Director
 of Research-Action-Advocacy Project, Religious Heritage of the Black
 World
 A.B., 1950, Lincoln University; S.T.B., 1953, S.T.M., 1954, Boston
 University; Diploma, 1960, Ecole des Affaires; D. Min. 1975, Colgate
 Rochester Divinity School
- JOHN WATERS**, Associate Professor of Old Testament
 B.A., 1957, Fisk University; S.T.B., 1967, Boston University School of
 Theology; Ph.D., 1970, Boston University
- EDWARD P. WIMBERLY**, Assistant Professor of Psychology and Pastoral
 Care and Religion
 B.A., 1965 University of Arizona; S.T.B. 1968, and S.T.M. 1971, Boston
 University School of Theology; Ph.D. 1976, Boston University Graduate
 School

PART-TIME

- G. MURRAY BRANCH**, Professor of Old Testament
 B.S., 1938, Virginia Union University; B.D., 1941, Andover Newton
 Theological School; A.M., 1946, Drew University
- CHARLES B. COPHER**, Professor of Old Testament, Emeritus
 A.B., 1938, Clark College; B.D., 1939, Gammon Theological Seminary;
 B.D., 1941, Oberlin Graduate School of Theology; Ph.D., 1947, Boston
 University
- JAMES COSTEN**, Instructor: United Presbyterian Polity and Program
 A.B., Johnson C. Smith University; B.D., Johnson C. Smith Theological
 Seminary; Th.M., Southeastern Theological Seminary
- WILLIE C. DAVIS**, Instructor in Christian Communication
 B.A., 1927, Talladega College; M.A., 1954, Atlanta University
- ALVIN L. DOPSON**, Instructor: Christian Methodist Episcopal History and
 Polity
 A.B., 1967, Morris Brown College; M. Div., 1970, The Interdenomina-
 tional Theological Center; D.D., 1974, Mississippi Industrial
- NOEL LEO ERSKINE**, Visiting Lecturer in Theology

- OLIVER J. HANEY, JR.**, Instructor: Church of God In Christ History and Polity
B.A., 1965, Philander Smith; M.Div., 1969, The Interdenominational Theological Center
- CALVIN HOUSTON**, Field Education Coordinator
B.A., 1956, Stillman College; B.D., 1959, Union Theological Seminary; D. Min. candidate: McCormick Seminary
- MAJOR J. JONES**, Instructor: United Methodist History, and Polity
B.A., 1941 Clark College; M. Div. 1944, Gammon Theological Seminary; S.T.M., 1950, Oberlin Graduate School of Theology; Th.D., 1957, Boston University, D. Min., Vanderbilt University, 1975
- DOW KIRKPATRICK**, Adjunct Professor in Mission and Ecumenics
A.B., 1938, Asbury College; B.D., 1940, Emory University; Ph.D., 1945, Drew University; Post Graduate Fellow—Oxford University, Oxford, England, 1946-1947
- CAROLYN LYNETTE McCRARY**, Instructor in Psychology and Pastoral Care
Certificat Mention "Assez bien", 1969, Universite de Lyon; B.A. 1970, Bennett College; Certification, 1973, Centro Intercultural de Documentastion (CIDOC); M.Div., 1977, The Interdenominational Theological Center; 1978, C.P.E. Internship
- MELVIN H. WATSON**, Visiting Lecturer in Theology
Morehouse College, A.B.; Oberlin College, M.A.; Oberlin Graduate School of Theology, B.D., S.T.M.; University of Chicago and Union Theological Seminary, special studies; Pacific School of Religion, Th.D.
- EDWARD WHEELER**, Instructor in Baptist History
B.A., 1969, Morehouse College; M.Div. Colgate/Rochester Divinity School; Ph.D. Candidate: Emory University
- CLAYTON D. WILKERSON**, Instructor: AME History and Polity
B.A., 1959, Morris Brown College; B.D., 1962, The Interdenominational Theological Center; S.T.M., 1965, The Interdenominational Theological Center; S.T.D., 1974, Emory University-Candler School of Theology

RETIRED

- G. MURRAY BRANCH**, Professor of Old Testament
B.S., 1938, Virginia Union University; B.D., 1941, Andover Newton Theological School; A.M., 1946, Drew University
- JOSEPHUS R. COAN**, Professor Emeritus of Christian Education and Mission
B.A., Howard University; B.D., Yale Divinity School; M.A., Yale University Graduate School; Ph.D., Hartford Seminary Foundation
- CHARLES B. COPHER**, Vice President for Academic Affairs; Dean of Faculty; Professor of Old Testament, Emeritus
A.B., 1938, Clark College; B.D., 1939, Gammon Theological Seminary; B.D., 1941, Oberlin Graduate School of Theology; Ph.D., 1947, Boston University

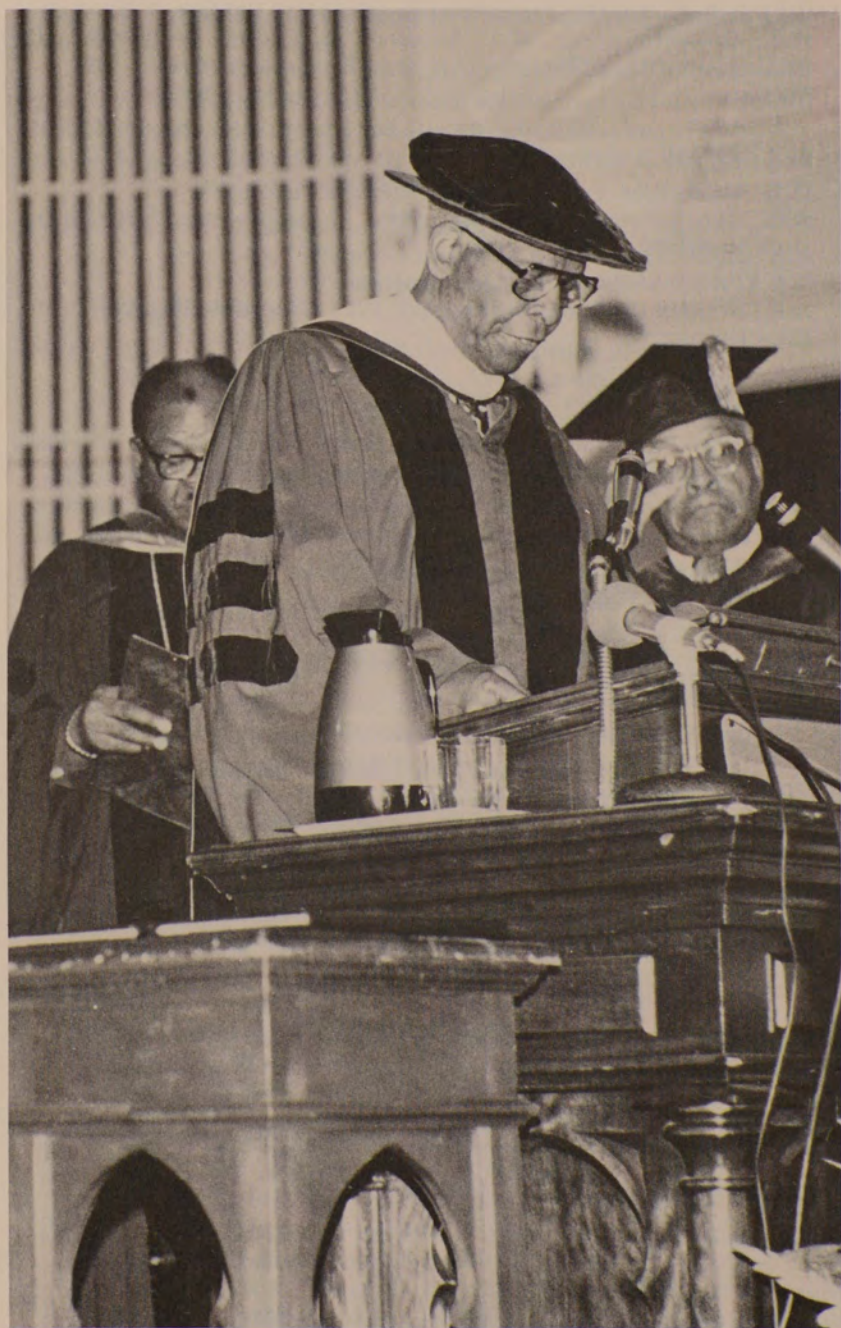
- SAMUEL C. KINCHELOE**, Professor of Sociology and Religion
 A.B., Drake University; M.A., University of Chicago Divinity School;
 Ph.D., University of Chicago
- J. EDWARD LANTZ**, Associate Professor of Communications and Ecumenics
 B.A., 1934, DePauw University; M. Div., 1938, Yale Divinity School;
 M.A., 1942, University of Michigan
- ELLIS H. RICHARDS**, Professor of Theology and Philosophy
 A.B., Syracuse University; B.D., Drew Theological Seminary; Ph.D.,
 Drew University
- HARRY V. RICHARDSON**, President Emeritus
 A.B., Western Reserve University; S.T.B., Harvard University; Ph.D.,
 Drew University

Alumni

The Alumni Fellowship of The Interdenominational Theological Center seeks to be a viable and vital instrument for mobilizing alumni into a productive source of financial and moral support for the Center. It aims to promote ecumenical fellowship and unity of effort in harnessing vast potential of alumni goodwill, concern and support for The I.T.C.

As the Alumni Fellowship looks to the future, it is with hope and anticipation of a major change in organizational structure, with an Administrative Council replacing the present elected administrative officers. This hopefully will lead to a more effective alumni organization.

- President — Rudolph Smith '64
 Vice Pres. — Clayton D. Wilkerson '62
 Secretary — David Copeland '74
 Treasurer — Grady Butler '62



COMMENCEMENT (1978)
AND ENROLLMENT STATISTICS



Commencement

1978

EXCHANGE OF DEGREES

Alexander, John M. (MSR) (IN ABSENTIA)	1961
Burt, Gene Eddie (PST)	1967
Hickman, Morgan Johnson (MSR) IN ABSENTIA)	1967
Talbert, Melvin (GTS) (IN ABSENTIA)	1962
Thomas, James (MSR) (IN ABSENTIA)	1966
Wilkerson, Clayton D. (TTS)	1962

MASTER OF RELIGIOUS EDUCATION

Kibadau, Wada S. (ITC)	Jos, Nigeria
B.A., A.C.W.A., 1973	

MASTER OF DIVINITY

Addy, Vidalia J. (GTS)	Newnan, Georgia
A.B., Clark College, 1969	
Babalola, Samson (JCS)	Ilesha, Nigeria
Diploma, Immanuel College, 1970	
Bass, Frederick Odell, Jr. (MSR)	High Point, N.C.
B.A., Morris Brown College, 1969	
Burkins, Robert Norris (JCS)	Rock Hill, S.C.
B.A., Wofford College, 1975	
Burley, Raymond Ray (MSR)	Decatur, Georgia
A.B., Morris Brown College, 1973	
Carson, Elizabeth (GTS)	Lexington, N.C.
B.S., Winston-Salem State University, 1966	
Cheseboro, Willie L. (PST)	Akron, Alabama
B.S., Alabama A & M University, 1973	
Colbert, Connie Robinson (ITC)	Atlanta, Georgia
A.B., Claflin College, 1963	
Cooper, Reuben Edward, Jr. (MSR)	N. Providence, Bahamas
B.A., University of Detroit, 1975	
Cravens, Sandra M. L. (CHM)	Seattle, Washington
B.S., Seattle University, 1975	
Crawford, Hayden (AJTI)	Gainesville, Florida
B.S., Florida A & M University, 1973	
Cruell, Curtis L. (MSR)	Easley, S.C.
A.B., Morris College, 1971	
Curry, Wayne Alexander (GTS)	Orlando, Florida
B.S.E., Florida Southern College, 1960	
Davis, James Levert (TTS)	Birmingham, Alabama
B.S., Morris Brown College, 1976	
Deas, Earnest L. (CHM)	Florence, S.C.
B.S., Morehouse College, 1973	
Douglas, Gary M., Jr. (JCS)	Statesboro, Georgia
B.S., Florida A & M, 1962	
Ellis, Zebulon John David (MSR)	Lumberton, N.C.
B.A., Morehouse College, 1975	

- Eubanks, Michael L. (JCS) Ridgewood, N.J.
A.B., New York University, 1972
- Foster, Charles Gilbert (MSR) Memphis, Tennessee
B.S., Philander Smith, 1975
- Fuller, John D. (MSR) Fayetteville, N.C.
A.B., Fayetteville State University, 1974
- Greer, Tommy C. (GTS) Holly Springs, Mississippi
A.B., Rust College, 1969
- Hall, David A. (CHM) Indianapolis, Indiana
A.B., Butler University, 1974
- Horton, Johnnie, Jr. (GTS) Fort Pierce, Florida
B.A., Florida A & M University, 1967
- Huffman, Billy Jr. (GTS) Belton, S.C.
B.A., Paine College, 1975
- Johnson, Robert (JCS) Due West, S.C.
A.B., Voorhees College, 1974
- Leonard, Barry Edwin (GTS) Mt. Airy, N.C.
B.S., Appalachian State University, 1969
- Massey, James Dennard, Jr. (PST) Gordon, Georgia
B.A., Paine College, 1973
- Moore, Frank Nathaniel (GTS) Chester, Pennsylvania
B.S., Cheyney State College, 1975
- Mozon, Ollis Jon, Jr. (MSR) Washington, D.C.
B.A., Wake Forest University, 1975
- Ndule, Ayuba A. (GTS) Bambur, Gongola State, Nigeria
Diploma, TCNN Bukuru, 1973
- Nkonge, Julius M'Mugwika (JCS) Eastern Provence, Kenya
Diploma, Westhill College, England, 1970
- Owens, Johnny Cephas, Jr. (MSR) Thunderbolt, Georgia
B.A., Morehouse College, 1975
- Paul, Isaiah Frederick (MSR) Hastings, Florida
B.S., Florida A & M University, 1972
- Phinisee, Isaiah Donald (JCS) Chicago, Illinois
B.S., Miss. Valley State University, 1967
- Polk, Paul Lamar (GTS) Houston, Texas
B.A., Wiley College, 1976
- Potts, James Ervin (MSR) Sumter, S.C.
B.A., Morehouse College, 1975
- Roberts, Pekola Fleming (CHM) Monticello, Miss.
B.S., Alcorn State University, 1974
- Sadler, John David (GTS) Houston, Texas
B.A., Clark College, 1975
- Shackelford, Alfred L. (JCS) Birmingham, Alabama
A.B., Miles College, 1974
- Smith, Judith Elaine (TTS) Stone Mountain, Georgia
B.A., Morris Brown College, 1973

Stanton, Talmadge, Sr. (GTS)	Clio, S.C.
B.A. Southeastern University, 1974	
Strong, Ronald (MSR)	Starke Florida
B.S., Florida Memorial, 1974	
Sueyoshi, Takaaki (ITC)	Gose-shi, Nara-Ken, Japan
B.A., International Christian University, 1973	
Wallace, Thomas E. (GTS)	Houston, Texas
B.A., University of Iowa, 1971	
Warren, Carolyn Adrienne (CHM)	Gary, Indiana
B.S., Indiana University, 1969	
Watts, Benny, Jr. (MSR)	Powder Springs, Georgia
B.A., Carroll College, 1972	
Williams, Arthur (AJTI)	Goodwin, Dominica
Diploma, Seabury-Western Theological Seminary, 1975	
Williams, Geraldine Cleota (GTS)	East Palatka, Fla.
B.A., Bethune-Cookman College, 1972	
Wilson, Cornelius (AJTI)	San Jose, Costa Rica
Diploma, Centro de Estudios Tiologicos, 1967	
Young, Carl H., Jr. (CHM)	Youngstown, Ohio
A.B., Youngstown State University, 1975	
Zang, Silvain (JCS)	Cameroun, West Africa
B.A., University of N.C. at Charlotte, 1974	

**HONORARY DEGREES
DOCTOR OF DIVINITY**

Charles Buchanan Copher
Ulric George
Thomas Pendleton Grissom
Elisha P. Murchison
James Adam Wilborn, Sr.

DEAN'S LIST

First Semester 1977-78

Jones, Michele	4.00	Foster, Charles	3.78
McKinney, Arnold	4.00	Hill, Oscar	3.78
Nkonge, Julius	4.00	Martin, Benjamin	3.75
Roberts, Pekola	4.00	Moore, Frank	3.69
Snulligan, Marsha	4.00	Eubanks, Michael	3.67
Stevenson, George	4.00	Hansen, Thomas	3.67
Wells, Ida	4.00	Jackson, Barry	3.61
Zang, Silvain	4.00	Albury, Kay	3.60
Strong, Ronald	3.94	Pinder, Peter	3.60
Kirstein, James	3.85	Reynolds, Edward	3.60
Seyoshi, Takaaki	3.83	Stampley, Nathaniel	3.59
Dokong, Alisabatu	3.81	Warren, Carolyn	3.58
Mozon, Ollis	3.81	Marino, Mark	3.57
Perry Williams	3.80	Sadler, John	3.57
Ramsey, Ronald	3.79	Hymes, Lillian	3.56
		Cheeseboro, Willie L.	3.54
		Brown, Alvin	3.53
		Smith, Albert	3.53

DEAN'S LIST

Second Semester 1977-1978

Cooper, Joethel	4.00
Cravens, Sandra	4.00
Ellis, John	4.00
Fluellen, Brenda	4.00
Jackson, Barry	4.00
Kirstein, James	4.00
Moore, Frank	4.00
Mozon, Ollis	4.00
Perry, William	4.00
Snulligan, Marsha	4.00
Wells, Ida	4.00
Vance, Gwendolyn	3.91
Ramsey, Ronald	3.88
Davis, James	3.85
Sueyoshi, Takaaki	3.85
Jones, Michelle	3.81
Smith, Albert	3.80
Anderson, Charles	3.80

Herring, Milton	3.79
Martin, Benjamin	3.79
Grier, Carolyn	3.77
Brown, Alvin	3.75
Hill, Oscar	3.67
Nkonge, Julius	3.67
Albury, Kay	3.63
Crawford, Nathaniel	3.64
Dokong, Alisabatu	3.63
Gaston, Janet	3.63
Brown, Mary	3.60
Page, Leon	3.60
Stevenson, George	3.60
Outlaw, Frederick	3.59
Merrill, Noah	3.57
Marino, Mark	3.57
Stampley, Nathaniel	3.56
Anderson, Hugh	3.54
Benton, Hezekiah	3.54
Eubanks, Michael	3.54
Parrott, Allan	3.53
Hooper, Robert	3.50

ENROLLMENT

Candidates for the Doctor of Ministry Degree

Haney, Oliver J.	Little Rock, Arkansas
B.A., Philander Smith College, 1965	
Hart, Raymond	Washington, D.C.
B.D., Livingstone College, 1962	
Johnson, Larry Lee	West Point, Ga.
B.A., Texas College, 1969	
Leavell, Noland D.	Atlanta, Ga.
B.S., Morehouse College, 1975	
Lester, Curtis L.	Tampa, Fla.
B.A., Florida A & M, 1969	
Purnell, Charles Wesley	Jackson, Miss.
B.A., Tougaloo College, 1969	

Candidate for Doctor of Sacred Theology

Bolds, Stanley	New Orleans, La.
B.A., Southern University, 1966	

Candidates for Master of Divinity Degree

Seniors

Addy, Vidalia	Newnan, Georgia
B.A., Clark College, 1969	
Bass, Wayne M.	Monesson, Pennsylvania
B.A., Yale University, 1972	
Carson, Elizabeth Ann	Lexington, North Carolina
B.S., Winston-Salem State University, 1966	

- Cheeseboro, Willie L. Akron, Alabama
 B.S., Alabama A & M University, 1973
- Cravens, Sandra Michele Seattle, Washington
 S.S.N., Seattle University, 1975
- Crawford, Hayden G. Gainesville, Fla.
 B.S., Florida A & M University, 1973
- Cruell, Curtis Lee Easley, South Carolina
 B.A., Morris College, 1972
- Curry, Wayne A. Orlando, Florida
 B.S.E., Florida Southern, 1960
- Davis, James Levert Detroit, Michigan
 B.S., Morris Brown College, 1975
- Ellis, John David Lumberton, North Carolina
 B.A., Morehouse College, 1975
- Eubanks, Michael L. Paramus, New Jersey
 B.S., New York University, 1972
- Foster, Charles Gilbert Memphis, Tenn.
 B.A., Philander State College, 1976
- Graves, Johnathan Oklahoma City, Oklahoma
 B.S., Oklahoma State University, 1975
- Greer, Tommy C., Sr. Philadelphia, Mississippi
 B.A., Rust College, 1975
- Hall, David A. Kokomo, Indiana
 B.A., Butler University, 1974
- Horton, Johnnie, Jr. Ft. Pierce, Florida
 B.A., Florida A & M University, 1967
- Johnson, Robert J. Due West, South Carolina
 B.A., Voorhees College
- Leonard, Barry Edwin Phenix City, Alabama
 B.S., Appalachian State University, 1969
- Massey, James Dennard Gordon, Georgia
 B.A., Paine College, 1973
- Millben, Michael Joseph Jackson, Michigan
 B.A., Langston University, 1975
- Moore, Nathaniel Frank Augusta, Georgia
 B.A., Cheyney State University, 1975
- Mozon, Ollis Jon Washington, D.C.
 B.A., Wake Forest University, 1975
- Ndule, Ayuba A. Nigeria
 Diploma, TCNN Benue-Plateau State, 1973
- Nichols, Delton Canton, Mississippi
 B.A., Morehouse College, 1975
- Nkonge, Julius M. Kenya, E. Africa
 Certificate, Westhill-Birmingham, England
- Owens, Johnny Cephas Thunderbolt, Georgia
 B.A., Morehouse College, 1975
- Parks, Terry Atlanta, Georgia
 B.S., Central Missouri State
- Phinisee, Isaiah D. Greenville, Mississippi
 B.S., Mississippi Valley State University
- Potts, James Ervin Sumter, South Carolina
 B.A., Morehouse College, 1975

- Roberts, Pekola Fleming.Monticello, Mississippi
 B.S., Alcorn College, 1974
- Sadler, John David.Carthage, Texas
 B.A., Clark College, 1975
- Smith, Judith ElaineAtlanta, Georgia
 B.A., Morris Brown College, 1973
- Stanton, Talmadge.Malboro County, Georgia
 B.A., Southeastern University, 1974
- Strong, RonaldStarke, Florida
 B.S., Florida Memorial College, 1974
- Sueyoshi, TakaakiJapan
 B.A., International Christian University
- Wallace, Thomas EdwinHouston, Texas
 B.A., University of Iowa, 1971
- Warren, Carolyn Adrienne.Gary, Indiana
 B.S., Indiana University, 1969
- Williams, Arthur W. L.Dominica, B.W.I.
 St. Mary's Academy
 Seabury-Western Theological Seminary, 1975
- Wilson, Cornelius Joshua.Costa Rica
 Diploma, Centro de Estudios Tiologicos, 1967
- Young, Carl H., Jr.Youngstown, Ohio
 A.B., Youngstown State University, 1975
- Zang, Silvain Z.Cameroun, West Africa
 B.A., University of North Carolina, 1974

Middlers

- Babalola, Samson O.Ikeji-Ile, Nigeria
 Dip.Th., Immanuel College, 1970
- Baker, Johnathan J.Atlanta, Georgia
 B.A., Morris Brown Cllege, 1976
- Bass, Frederick, O., Jr.High Point, North Carolina
 B.A., Morris Borwn College, 1969
- Best, Edward J., Jr.Whiteville, North Carolina
 B.S., Barber Scotia College, 1969
- Bonner, Robert, Jr.Selma, Alabama
 B.A., Miler College, 1976
- Bracey, LeonHinds, Mississippi
 B.S., Jackson State, 1976
- Burkins, Robert N.McConnells, South Carolina
 B.A., Wofford College, 1975
- Burley, Raymond R.Jacksonville, Florida
 B.A., Morris Brown College, 1973
- Collier, Jimmy L.Atlanta, Georgia
 B.A., LaGrange College, 1975
- Collier, Theodore C.Nashville, Tennessee
 B.S., Tennessee State, 1976
- Cooper, Reuben E.Nassau, Bahamas
 B.A., University of Detroit, 1975
- Creamer, Gregory C.New York, New York
 A.B., Virginia Union University, 1975

- Crenshaw, Hazell M. Ft. Pierce, Florida
B.S., Florida Memorial College, 1976
- Crison, Larry J. Shelbyville, Tennessee
B.S., Tennessee State University, 1975
- Dabney, Earl F. Newport News, Virginia
A.B., Norfolk State, 1962
- Daniels, Donald J. Dayton, Tennessee
B.S., Alabama A & M, 1962
- Dean, Jonathan. Mound Bayou, Mississippi
B.S., Tougaloo College, 1976
- Deas, Earnest L. St. Flo, South Carolina
B.S. Morehouse College, 1973
- Dennis, Warren L. Cincinnati, Ohio
B.S., University of Cincinnati, 1974
- Dicks, Willie F., Jr. Sumter, South Carolina
B.S., Claflin College, 1971
- Donaldson, Robert E. Anderson, South Carolina
Degree Equivalency
- Eleazer, Diane J. St. Albans, New York
B.A., Queen's College, 1976
- Foxx, George C. Eclectic, Alabama
B.S., Daniel Payne College, 1972
- Grant, Rosalyn A. Georgetown, South Carolina
B.A., Morris Brown College, 1975
- Heidelberg, Phillip W. Laurel, Mississippi
B.A., Rust College, 1976
- Herring, Milton S. Birmingham, Alabama
B.A., Morehouse College, 1976
- Hill, Oscar L., Jr. Gary, Indiana
B.A., Morris Brown College, 1977
- Huffman, Billy J. Wadley, Georgia
B.A., Paine College, 1976
- Hymes, Lillian Johns Island, South Carolina
B.A., Claflin College, 1975
- Irby, Perry B. Spartanburg, South Carolina
B.S., East Tennessee State, 1977
- Jackson, Joyce Tulsa, Oklahoma
A.B., Tennessee State, 1968
M.S., same, 1973
- Johnson, Timothy I., II Centerville, Alabama
B.S., Barber Scotia, 1969
- Jones, James A. Cleveland, Ohio
B.A., Heidelberg, 1975
- King, Charles J., Jr. Columbus, Georgia
B.A., Paine College, 1974
- Kuria, Plawson K. Nairobi, Kenya
Certif., St. Paul's Theol. College, 1970
- Lewis, Ralph E. Ypsilanti, Michigan
B.A., University of Detroit, 1975
- Maddox, Deborah C. Waco, Texas
B.S., Paul Quinn College, 1976
- Martin, Benjamin J. West Monroe, Louisiana
B.S., Morehouse College, 1963

- Mayes, Lawrence D. Charlotte, North Carolina
B.A., Johnson C. Smith, 1976
- Merrill, Noah F. Lincoln, Delaware
B.A., Wilberforce University, 1976
- Miller, L. Bernard Baltimore, Maryland
A.B., Morgan State College, 1962
- Morrison, John W. Setauket, New York
B.A., Wilberforce University, 1974
- McCleary, Harry L. Riceville, Tennessee
B.S., Tuskegee Institute, 1975
- McClinton, Eugene Oakland, Mississippi
B.S., Jackson State, 1970
- McGriff, James E. Cincinnati, Ohio
B.A., Lane College, 1974
- Neal, Martha A. Kansas City, Missouri
B.A., Goshen College, 1976
- Ngwenya, Jabula J. Mbabane, Swaziland
Dip.Ed., St. Bedes & Adams Col., 1949
Certif. Theol., same, 1964
- Outlaw, Frederick G. Decatur, Alabama
B.A., Athens State College, 1976
- Owusu, Dora O. Accra, Ghana, W. Africa
Cert., St. Colm's Theol. Col., 1968
- Parrott, Allan W. Darlington, South Carolina
B.A., Allen University, 1975
- Perkins, Paul F. Kings Mountain, North Carolina
B.S., Winston-Salem State, 1964
- Polk, Paul Houston Texas
B.A., Wiley College, 1976
- Quarles, Robert E.M. Wichita, Kansas
B.A., Friends University, 1976
- Reynolds, Edward S. Gulfport, Mississippi
B.A., Morris Brown College, 1972
- Reynolds, Johnny C. Sparta, Georgia
B.S., Morris Brown College, 1976
- Robinson, Howard A., Jr. Columbus, Ohio
B.A., Northwest, 1976
- Scott, Robert J. Atlanta, Georgia
B.A., Clark College, 1975
- Spears, Conway E. Birmingham, Alabama
B.A., Miles College, 1976
- Stampley, Nathaniel J. Baton Rouge, Louisiana
B.A., Tougaloo College, 1976
- Vance, Gwendolyn W. Charleston, South Carolina
B.S., South Carolina State, 1976
- Wells, Ida M. New York, New York
A.B., Morgan State University, 1953
- Wicker, Samuel W. Davisboro, Georgia
Degree Equivalency
- Wright, Frederick A. Beckley, West Virginia
B.S., Baptist College, 1976

Juniors

- Albury, Kay F. Miami, Florida
 B.A., Howard University, 1972
- Allen, Eugene R. Henderson, North Carolina
 A.A., Johnson C. Smith, 1977
- Allen, Richard Tunica, Mississippi
 B.S., Florida State, 1976
- Anderson, Clyde Sumter, South Carolina
 B.A., Claflin College, 1977
- Anderson, Hugh, Jr. Gainesville, Florida
 B.S., Florida A&M, 1967
- Applewhite, Joe E. Bassfield, Mississippi
 B.S., Mississippi Industrial, 1967
- Ash, Donald D. Tallahassee, Florida
 B.S., Florida A&M, 1977
- Atwater, Melvin L. Jackson, Tennessee
 B.A., Lane College, 1976
- Baker, Mary H. Toccoa, Georgia
 B.S., West Georgia, 1977
- Bass, John N. Bassfield, Mississippi
 B.S., Mississippi Industrial, 1966
- Benton, Hezekiah, Jr. Colquitt, Georgia
 B.S., Ft. Valley State, 1966
- Bethley, Jerome C. Wisner, Louisiana
 B.A., Alcorn State University, 1976
- Boone, Richard C. Montgomery, Alabama
 B.S., Alabama State University, 1971
- Bradley, George W. Dayton, Ohio
 B.S., Tuskegee Institute, 1949
- Brown, Alvin Beaumont, Texas
 B.A., American Baptist College, 1976
- Brown, Carl D. Houston, Texas
 B.A., North Central Bible College, 1976
- Brown, Casimir K. Durham, North Carolina
 B.A., North Carolina Central, 1976
- Brown, Mary K. Jacksonville, Florida
 B.Ed., University of Miami, 1977
- Burnette, Joetta Daytona Beach, Florida
 B.A., Bethune Cookman College, 1977
- Bush, Brenda A. Brooklyn, New York
 B.S., University of Massachusetts, 1975
- Cain, Norman L., Jr. Philadelphia, Pennsylvania
 B.S., Bluefield State College, 1964
- Calloway, Earl L. Savannah, Georgia
 B.S., Savannah State, 1971
 M.Ed., Armstrong, 1974
- Carson, Arthur Atlanta, Georgia
 B.A., Morris Brown, 1971
- Connors, Patrick East St. Louis, Illinois
 B.S., Southern Illinois, 1975
- Cooper, Joethel J. Mullins, South Carolina
 B.A., Clark College, 1967

- Cooper, Linda D. Lincoln, Texas
 B.S., Paul Quinn College, 1976
- Cottman, Harold F., IV Philadelphia, Pennsylvania
 B.A., Harvard University, 1973
- Crawford, Nathaniel Jr. Tarpon Springs, Florida
 B.S., St. Leo College, 1974
- Crawley, Alonzo C. Seattle, Washington
 B.A., Morehouse College, 1977
- Cuffie, Robert C., Jr. Detroit, Michigan
 B.A., Bishop College, 1977
- Davis, Frederick A. Deland, Florida
 B.A., Johnson C. Smith University, 1977
- Davis, Jesse J. Birmingham, Alabama
 B.A., Miles College, 1974
- Davis, Ronnie J. Mound City, Illinois
 B.A., University of New York, 1975
- Davis, Sanford J. East Orange, New Jersey
 B.S., Central State, 1974
- Day, Viki J. Bluefield, West Virginia
 B.S., West Virginia University, 1976
- Dent, Benjamin F. Albany, Georgia
 B.A., Albany State College, 1977
- Dixon, Roland D. Chicago, Illinois
 B.S.B.A., Roosevelt University, 1976
- Doking, Alisabatu Kamurukase, Nigeria
 Dipl. Theol., Igbaja Theol. Seminary, 1975
- Ducksworth, Robert L. Laurel, Mississippi
 B.A., Bishop College, 1977
- Dunham, Cliff A. Montgomery, Alabama
 B.S., Troy State University, 1973
- Dwight, Alice F. Hattiesburg, Mississippi
 B.A., University of Southern Mississippi, 1977
- Ephraim, James R., Jr. Camden, Alabama
 B.A., Morehouse College, 1972
- Fitz-Ritson, Arthur E. Jamaica, West Indies
 Certif., Emmaus Bible School, 1961
- Gaston, Janet Detroit, Michigan
 B.A., Scarritt College, 1977
- Glenn, Dorothy J. Dallas, Texas
 B.S., Prairie View A&M, 1964
- Griffin, Roy J. Atlanta, Georgia
 B.A., Morris Brown College, 1977
- Grooms, Gregory A. Holden, West Virginia
 B.A., Marshall University, 1974
- Hall, Derwood F. Charlotte, North Carolina
 B.A., Johnson C. Smith, 1976
- Hill, Clyde Tallapoosa, Georgia
 B.A., Benedict College, 1977
- Holmes, Ronald L. Roanoke, Virginia
 B.S., Winston-Salem State, 1977
- Hooper, Robert R. Orange, New Jersey
 B.P.Ed., Purdue University, 1970

- Hopkins, James L. Jackson, Mississippi
 B.S., Jackson State, 1972
- Horsey, Bernard Philadelphia, Pennsylvania
 B.A., Clark College, 1977
- Houston, Etta D. Atlanta, Georgia
 B.S., Barber Scotia College, 1960
- Hunter, George Mooresville, North Carolina
 B.S., Johnson C. Smith, 1976
- Irvin, Wilma J. Detroit, Michigan
 B.A., University of Detroit, 1977
- Jackson, Alfred Blair, South Carolina
 B.A., University of South Carolina, 1976
- Jackson, Barry A. Bastrop, Texas
 B.S., Prairie View A&M, 1973
- Jackson, Reginald T. Dover, Delaware
 B.A., Delaware State, 1976
- Jackson, Reuben L. Atlanta, Georgia
 B.S., Virginia Union University, 1977
- Joiner, Jodie E. Maken, Mississippi
 B.A., Wiley College, 1977
- Jones, Alphonso San Diego, California
 B.A., Point Loma College, 1976
- Jones, Michele Sue. Kansas City, Kansas
 B.Music Ed., University of Kansas, 1966
- Jones, Odis B. Birmingham, Alabama
 B.S., Morris Brown College, 1965
- Lesane, Warren J., Jr. Sumter, North Carolina
 B.A., Johnson C. Smith, 1977
- Lockhart, Samuel A. South Bend, Indiana
 B.A., Bethel College, 1977
- Mallett, Jerome Milwaukee, Wisconsin
 B.S., Whitewater College, 1973
- Mangum, Charles E. Chattanooga, Tennessee
 B.A., Beulah Heights Bible College, 1975
- Marino, Mark North Adams, Massachusetts
 B.S., University of Massachusetts, 1973
- Matthews, Berry E. Bennettsville, South Carolina
 B.S., South Carolina State, 1973
- Mayhew, Bernard S., Jr. Mt. Vernon, New York
 B.A., Johnson C. Smith, 1977
- Mitchell, Francies V. Atlanta, Texas
 B.S., Texas College, 1975
- Mitchell, Vincent F. Jacksonville, Florida
 B.A., Edward Waters College, 1976
- Morrow, Russell M. New York, New York
 B.A., Wilberforce University, 1977
- McCutcheon, Jesse J. Davidson, Tennessee
 B.A., American Baptist College, 1977
- McLamore, Charles C. Irmo, South Carolina
 B.A., Allen University, 1977
- McLendon, Howard A. Hartsfield, Connecticut
 B.S., Boston University, 1975

- Nimmons, Terry C., Jr. Hastings, Florida
 B.A., Bethune Cookman College, 1959
- Owens, Willie N. Hillsboro, Alabama
 A.B., Miles College, 1977
- Page, Clarence G. Dillon, South Carolina
 B.A., Allen College, 1977
- Page, Leon D. Dillon South Carolina
 B.A. Stillman, 1977
- Palmer, Harold E. Brooklyn, New York
 B.S.N., Long Island University, 1974
- Patrick, William O. Uniontown, Alabama
 B.S., Alabama State, 1963
- Perkins, William St. Stephen, South Carolina
 B.A., Claflin College, 1976
- Perry, George E. Houston, Texas
 B.S., Southern Bible College, 1977
- Pinder, Peter E. Freeport, Bahamas
 B.A., Florida Memorial College, 1973
- Portee, Frank, III Clover, South Carolina
 A.B., Carson Newman, 1977
- Powell, James E. Richmond, Virginia
 B.S., Tuskegee Institute, 1949
- Prowell, Dwight D. Columbus, Mississippi
 B.S., Rust College, 1977
- Quillen, Donald M. Bogalusa, Louisiana
 B.S., Southern University, 1976
- Ramsey, Ronald E. Babson Park, Florida
 B.A., Warner Southern, 1976
- Reese, Delois Goose Creek, South Carolina
 B.S., Voorhees, 1976
- Riley, Alvin T. Cambridge, Massachusetts
 B.S., Bentley College, 1977
- Roberson, Joseph College Park, Georgia
 B.S., Georgia State University, 1976
- Robinson, Curtis T. Chicago, Illinois
 B.A. Miles College, 1977
- Rouse, Luonne A. Greenville, South Carolina
 B.S., South Carolina State, 1977
- Rumley, Robert J., Jr. York, Alabama
 B.S., Florida A&M, 1976
- Scott, Alvin D. DeQuincy, Louisiana
 B.A., Texas Southern, 1975
- Scott, Otis, Jr. Rembert, South Carolina
 B.S., Claflin College, 1969
- Session, Clarence L. Rusk, Texas
 B.S., Texas College, 1957
- Shaw, Jerel. Houston, Texas
 B.A., Chapman College, 1976
- Smith, Albert L. Saluda, South Carolina
 B.S., Voorhees, 1974
- Smith, Dewey W. Winterville, North Carolina
 B.S., North Carolina A&T State, 1975

- Smith, Michael A.Atlanta, Georgia
 B.A., Morehouse College, 1974
- Smith, Nile E., Jr.El Dorado, Arkansas
 B.A., University of Arkansas, 1973
- Smith, Velma G.Knoxville, Tennessee
 V.A., Knoxville College, 1971
- Stevenson, George L. Jr.Harrisburg, Pennsylvania
 B.A., Messiah College, 1976
- Stokes, Richard F.Milledgeville, Georgia
 Degree Equivalency
- Stovall, Charles L.Lexington, Mississippi
 B.S., Clark College, 1977
- Sutton, Ira S.Brooklyn, New York
 B.S., Morris Brown, 1971
- Swanson, James E., Sr.Houston, Texas
 B.S., Southern Bible College, 1977
- Thomas, Marvin F.Tuscaloosa, Alabama
 B.A., Stillman College, 1977
- Thornton, Michelle R.San Antonio, Texas
 B.A., Grimmell College, 1976
- Todd, Paul A.Flint, Michigan
 B.A., Bishop College, 1977
- Tullis, Stevenson E.Headland, Alabama
 B.A., Alabama A&M, 1976
- Tyler, George W.Meridian, Mississippi
 B.A., Tougaloo College, 1970
- Vandiver, Harold.Anderson, South Carolina
 A.B., Central Wesleyan College, 1977
- Walker, David.Eufaula, Alabama
 B.A., Allen University, 1977
- Walker, Lewis F.Rutledge, Tennessee
 B.S., Lambuth College, 1975
- Wallace, Michael E.Charlotte, N.C.
 B.A., Johnson C. Smith, 1975
- Warner, Ronald W.Detroit, Michigan
 B.A., Trinity College, 1975
- Warren BerniceChester, Pennsylvania
 B.S., Kutztown State, 1974
- Washington, Jack C.Easley, South Carolina
 B.A., Claflin College, 1977
- Westbrook, Luther J., Jr.Gaffney, South Carolina
 B.A., Shaw University, 1976
- White, Larnie J.Orlando, Florida
 B.A., Bethune Cookman College, 1976
- White, Leslie R.Portland, Oregon
 B.A., Morris Brown College, 1977
- Wilkerson, Marian J.Columbus, Georgia
 B.A., Morris Brown College, 1977
- Williams, Eddie, Jr.Tunica, Mississippi
 B.A., Eastern Nebraska Christian College, 1974
- Williams, Geraldine C.Palatka, Florida
 B.A., Bethune Cookman College, 1972

- Wilson, Bernard R. New York, New York
 B.A., Morehouse College, 1970
- Wilson, Gary J. Bolivar, Tennessee
 B.S., Tennessee State University, 1977
- Winston, Emmett E. Portland, Oregon
 A.B., Ripon College, 1976
- Woodward, Coley C. Newark, New Jersey
 B.A., Wilberforce University, 1976

Interns

- Marshall, Gordon L. Bridgeport, Connecticut
 B.A., Clark College, 1972
- Snulligan, Marsha M. St. Louis, Missouri
 B.A., Johnson C. Smith, 1974

Special Students

- Anyango, Harrison A. Nyanza, Kenya
 C.Th.Ed., St. Paul's Theological Seminary, 1972
- Cyrus, Timm Louisville, Kentucky
 Bellarmine, 1978
- Grier, Carolyn M. (Exhcange)Spencer, New York
 V.S., Ithaca College, 1975
- Hansen, Thomas P. Goshen, New York
 B.S., State University College, 1975
- Henderson, Ronald D. Waco, Texas
 B.S., Dallas Baptist College, 1977
- Kamau, Jesse M.Karatina, Kenya
 Diploma, St. Paul's Theological Seminary
- Kirstein, James F. Fairview, North Carolina
 B.A., Baylor University, 1952
- McKinney, Arnold. Saluda, South Carolina
 Degree Equivalency
- Perry, William L. Kenosho, Wisconsin
 B.S., Carthage College, 1962
- Weber, Leslie Baltimore, Maryland
 B.A., Concordia Senior College, 1969

Auditor

- Fischer, Adrian F. Chicago, Illinois
 B.A., Quincy College, 1971

Candidates for the Master of Religious Education (M.R.E.) Degree

Seniors

- Crismon, Larry Shelbyville, Tennessee
 B.S., Tennessee A & I University
- Kibadau, Wada Jos Plateau State, Nigeria
 B.A., Adventist College of West Africa, 1973
- Maddox, Deborah Waco, Texas
 B.A., Paul Quinn College, 1976

Juniors

Baker, Mary	Toccoa, Georgia
B.S., West Georgia College, 1977	
Dokong, Alisabatu	Jos Plateau State, Nigeria
Diploma, Igbaja Theological Seminary, 1976	
Ekanem, Efiong A.	Ikot Okubo Ibesikpa, Nigeria
B.B., Carver Bible College, 1977	
Eleazer, Diane	St. Albans, New York
B.A., Queens College, 1976	
Makaya, Egbert	Rhodesia
Diploma, London University, 1972	
Parks, Terry	Atlanta, Georgia
B.S., Central Missouri College, 1971	
Reese, Delois	Goose Creek, South Carolina
B.S., Voorhees College, 1976	
Riley, Alvin	Cambridge, Massachusetts
B.S., Bentley College, 1977	
Vandiver, Harold	Anderson, South Carolina
A.B., Central Wesleyan College, 1977	

STATISTICAL REPORT

Total number of student enrolled for 1977-1978. 292

Class Distribution of Students

Graduate Candidates	7
S.T.D. 1	
D.Min. 6	
Master of Divinity Candidates	253
Master of Religious Education Candidates	14
Special Students	11
Non-degree 7	
Degree 4	
Auditors	2
Part-time	5
Maintaining Matriculation	14
Summer Only	2

Male/Female Distribution:

Male	246
Female	46

Comparative Nationality Distribution:

American	272
Black	261
Caucasians	11
Africans	14
South & Central Africans	1
Afro-West Indians	4
Asians and Orientals	1

COLLEGE DISTRIBUTION OF STUDENTS

American Baptist College	2	Heidelberg College	1
Albany State College	1	Howard University	1
Allen University	4	Igbaja Theological Seminary	1
Alabama State College	1	Immanuel College	1
Alabama A & M College	4	Indiana University	1
Alcorn State University	2	International Christian College	1
Appalachian State University	1	Ithaca College	1
Athens State	1	Jackson State College	3
Adventist College of West Africa	1	Johnson C. Smith University	10
Beulah Heights Bible College	1	Knoxville College	1
Bethel College	1	Kutztown College	1
Barber Scotia College	3	Lambuth College	1
Benedict College	1	Langston University	1
Baptist College	1	LaGrange College	1
Bethune Cookman College	4	Lane College	2
Bluefield State College	1	Livingston College	1
Bishop College	2	London University	1
Bellarmino College	1	Long Island University	1
Boston College	1	Marshall University	1
Bentley College	2	Messiah College	1
Baylor University	1	Miles College	5
Butler University	1	Mississippi Industrial College	2
Carson Newman College	1	Mississippi Valley State College	1
Carver Bible College	1	Morehouse College	11
Carthage College	1	Morgan State University	1
Central Missouri State College	1	Morris Brown College	13
Centro de Estudios Tiologicos	1	Morris College	2
Central Wesleyan College	2	North Carolina Central	1
Central State College	1	North Carolina A & T	1
Claflin College	6	North Central Bible College	1
Clark College	8	Northwest College	1
Chapman College	1	Norfolk State College	1
Cheyney State College	1	New York University	2
Concordia Senior College	1	Oklahoma State University	1
Delaware State College	1	Paul Quinn College	3
Dallas Baptist College	1	Paine College	3
Daniel Payne College	1	Philander Smith College	2
East Tennessee State College	1	Point Loma College	1
Eastern Nebraska College	1	Prairie View A & M	2
Edward Waters College	1	Purdue University	1
Emmaus Bible School	1	Roosevelt University	1
Florida State University	1	Ripon College	1
Friends University	1	Rust College	2
Florida Memorial College	3	Queens College	2
Florida A&M University	6	Quincy College	1
Florida Southern University	1	Savannah State College	1
Fort Valley State College	1	Scarrit College	1
Georgia State University	1	Seabury Western Theological	1
Grimmell College	1	Seattle University	1
Goshen College	1	Shaw University	1
Harvard University	1	Southeastern University	1

Southern University	1	University of Kansas	1
Southern Bible College	2	University of Massachusetts	2
Southern Illinois	1	University of Miami	1
South Carolina State College	3	University of S. Mississippi	2
St. Bedes & Adams College	1	University of Iowa	1
St. Colm's Theological College	1	University of N. Carolina	1
St. Leo College	1	University of S. Carolina	1
St. Paul's Theological Seminary	2	Virginia Union	2
State University of New York	1	Voorhees	4
Stillman College	2	Wake Forest University	1
Texas College	3	Warner Southern College	1
Texas Southern	1	West Georgia College	3
Tennessee A & I State University	5	Westhill College	1
Tennessee State University	1	West Virginia University	1
Theol. College of N. Nigeria	1	Whitewater College	1
Tougaloo College	4	Wilberforce University	3
Trinity College	1	Wiley College	2
Troy State University	1	Winston-Salem State College	3
Tuskegee Institute	3	Wofford College	1
University of Cincinnati	1	Yale University	1
University of Arkansas	1	Youngstown State University	1
University of Detroit	2		

GEOGRAPHICAL DISTRIBUTION OF STUDENTS

1977-1978

Alabama	19	Michigan	12
Arkansas	1	Mississippi	19
Bahamas	2	Missouri	4
British West Indies	1	New Jersey	3
Cameroun Africa	2	New York	12
California	2	Nigeria	5
Connecticut	1	North Carolina	13
Costa Rica	1	Ohio	5
Delaware	2	Oklahoma	3
East Africa	1	Oregon	1
Florida	20	Pennsylvania	8
Ghana	1	Rhodesia	1
Georgia	60	South Carolina	29
Illinois	5	Swaziland	1
Indiana	3	Tennessee	11
Japan	1	Texas	15
Kansas	3	Virginia	2
Kentucky	1	West Virginia	3
Kenya	2	Wisconsin	1
Liberia	2	Washington	2
Louisiana	4	Washington, D.C.	1
Maryland	3		
Massachusetts	4	TOTAL	292

SCHOOL DISTRIBUTION OF STUDENTS

1977-1978

Absalom Jones Theological Institute	14
Gammon Theological Seminary	65
At Large	9
Johnson C. Smith Theological Seminary	36
Charles H. Mason Theological Seminary	42
Morehouse School of Religion	69
Phillips School of Theology	23
Turner Theological Seminary	34
 TOTAL	 292

DENOMINATIONAL DISTRIBUTION OF STUDENTS

African Methodist Episcopal	36
African Methodist Episcopal Zion	2
Baptist	71
Church of Christ in Nigeria	1
Church of God in Christ	36
Church of the Living God	1
Church of God	1
Christian Methodist Episcopal	23
Holiness	1
International Pentacostal Church of Christ	1
Kyodan & International Christian Univ. Church	1
Lutheran	1
Pentacostal	2
Roman Catholic	1
Seventh Day Adventist	1
United Church of Christ	1
United Holy	1
United Methodist	66
United Presbyterian USA	36
 TOTAL	 292

Index

Activities	34	Georgia Association For Pastoral Care, Inc.	17
Additional Provision	24	History	7
Administration	87	Housing	30
Atlanta Theological Association	17	In-Career D.Min. and S.T.D. Courses.	75
Attendance	23	Information Pertaining to Veterans	84
Board	30	Institutional Affiliations	16
Board of Trustees	88	Library	16
Calendar	3	Location	16
Chapel Worship	35	Nature of the Center	13
Classifications	23	Non-Credit Study	21
Commencement 1978	99	Objectives	14
Constituent Seminaries	8	Policy of Debt Payment	29
Contents	1	Programs	37
Courses of Study	53	Purpose	14
Bible	54	Registration	21
Church History	58	Schedule of Costs	27
Philosophy and Theology	60	Special Programs	52
Church and Society	62	Staff	91
Ministries of the Church	66	Standards	23
Dean's List	102	Statistical Report	114
Enrollment	103	Student Expenses	28
Executive Staff	91	Undergraduate Pre-Seminary Studies	38
Faculty	93		
Financial Aid	30		
General Terms Of Admissions Degree Program.	19		

INTERDENOMINATIONAL THEOLOGICAL CENTER
671 BECKWITH STREET, S. W., ATLANTA, GEORGIA 30314

In Affiliation With
The Atlanta University Center



Strength in Diversity

Atlanta University Center
360 Westview Drive, S. W.
Atlanta, Georgia 30314

The Interdenominational Theology Center is an
Equal Opportunity/Affirmative Action Professional School and Employer.