

GAMMON
THEOLOGICAL SEMINARY

SCHOOL OF THEOLOGY
SCHOOL OF MISSIONS
AND
BIBLE TRAINING SCHOOL

ANNOUNCEMENTS
1928-1929



ANNUAL CATALOGUE
1927-1928

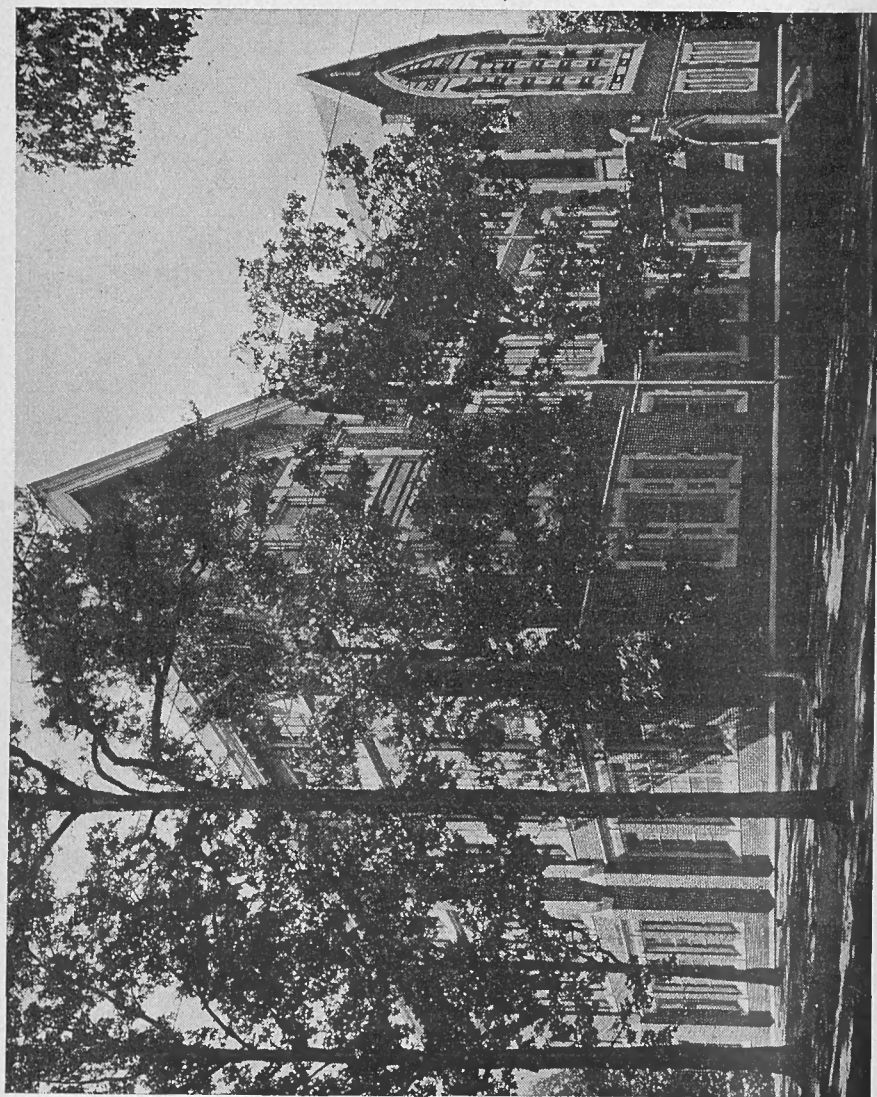
VOLUME XLV
JUNE 1928

ATLANTA, GEORGIA

*NOT THAT WE HAVE LORDSHIP OVER YOUR FAITH,
BUT ARE HELPERS OF YOUR JOY.—PAUL.*

TABLE OF CONTENTS

	Page
The Calendar 1928-1929	5
Board of Trustees	6
The Faculty	7
The Stewart Foundation Trustees	9
Why Take Theological Training	11
The Purpose of Gammon	11
The Faculty Characterized	12
The Library	13
Historical Statement	15
The Location of Gammon	17
The Religious Life of the Seminary	19
Faculty Advisers	20
Supervised Field Work	20
The Bachelor of Divinity Degree	21
The Diploma Course	23
The Bible Training School	23
Women Admitted	23
The Courses of Study	25
Electives in Clark University	36
Schedule of Class Hours, First Semester	37
Schedule of Class Hours, Second Semester	38
Terms of Admission	39
Non-Sectarian	39
Credentials	39
Graduation Requirements	40
Special Students	40
Late Registration Fee	40
Rooms, Cottages	41
Refectory	41
Expenses	42
Self Help	42
The Student Loan Fund	43
Scholarships	43
Student Deposits	44
Prizes	44
The Gammon Lyceum	45
The Woman's Club	45
The School of Missions	47
The Stewart Missionary Foundation for Africa	49
"The Foundation"	50
The Catalogue of 1927-1928	51
The Faculty, 1927-1928	52
The Student Register 1927-1928	53
The Graduating Class 1928	63



THIRKIELD HALL—ADMINISTRATION BUILDING AND CHAPEL

Calendar 1928-1929

1928

FIRST SEMESTER

September 25, Tuesday—Registration, Examination and Classification of Candidates for Admission.

September 26, Wednesday—Organization of Classes, 9:00 A. M. to 12:00 M., and first Chapel Service, 2:30 P. M.

October 19, Friday—Matriculation Day. Address in Chapel of Thirkield Hall, 2:30 P. M., by Professor W. Y. Bell, Ph.D. At 8:00 P. M. Seminary Reception in Bowen Hall.

November 29, Thursday—Thanksgiving Day—Holiday.

December 21, Friday noon, to December 31, Monday inclusive, Christmas vacation.

1929

January 1, Tuesday—Emancipation Day. Address in Chapel of Thirkield Hall by Professor R. N. Brooks, D.D.

January 9, Wednesday—Founders' Day. Address in Chapel of Thirkield Hall, by Bishop F. T. Keeney, D.D., LL.D.

January 22, Tuesday—First Semester ends.

January 23, Wednesday—Examinations begin.

January 25, Friday—Registration for Second Semester.

January 28, Monday—Second Semester begins.

February 12, Tuesday—Celebration of Lincoln's Birthday and Frederick Douglass' Birthday.

February 18 to 22, Monday to Friday—The Gammon Alumni Lectures by Bishop Francis J. McConnell, D.D., LL.D., in Chapel of Thirkield Hall.

March 28 to 31, Thursday to Sunday—Annual Student Missionary Convention and Prize Contests in Croghan Chapel, Clark University.

May 16, Thursday—Examinations begin.

May 19, Sunday—3:00 P. M. Baccalaureate Sermon in Croghan Chapel; 7:30 P. M. Annual Class Day Program for the School of Missions.

May 20, Monday—Class Day Exercises, Alumni Reunion of Classes 1889, 1899, 1909, 1919, and General Alumni Convocation and Business Session.

May 21, Tuesday—10:00 A. M. Inauguration of the President, Franklin Halsted Clapp. 8:00 P. M. Annual Banquet, Bowen Hall.

May 22, Wednesday—Commencement Day.

Board of Trustees

EX-OFFICIO

Bishop W. F. Anderson, D.D., LL.D. Boston, Mass.
The Rev. W. S. Bovard, D.D. Chicago, Ill.
President F. H. Clapp, Th.M., D.D. Atlanta, Ga.

TERM EXPIRES IN 1929

Lewis N. Gatch, Attorney-at-Law Cincinnati, Ohio.
The Rev. Wm. H. Crawford, D.D. Meadville, Pa.
The Rev. George C. Douglass, D.D. Cincinnati, Ohio.
The Rev. G. Grant Stewart Pacific Palisades, Calif.

TERM EXPIRES IN 1930

I. Garland Penn, Lit.D. Cincinnati, Ohio.
Willis M. Everett, Attorney-at-Law Atlanta, Ga.
Bishop R. E. Jones, D.D., LL.D. New Orleans, La.
Bishop F. T. Keeney, D.D., LL.D. Atlanta, Ga.

TERM EXPIRES IN 1931

Bishop Wilbur P. Thirfield, D.D., LL.D. New York City.
Bishop Matthew W. Clair, D.D. Covington, Ky.
The Rev. H. W. B. Wilson, D.D. Atlanta, Ga.
The Rev. J. P. Wragg, D.D. New York City.

OFFICERS OF THE BOARD

President—Bishop W. P. Thirfield.
Vice-President—Bishop F. T. Keeney.
Second Vice-President—Mr. Willis M. Everett.
Secretary—Rev. H. W. B. Wilson.
Local Treasurer—President F. H. Clapp.

EXECUTIVE COMMITTEE

Bishop F. T. Keeney, Chairman; F. H. Clapp, Vice-Chairman;
H. W. B. Wilson, Secretary; Willis M. Everett;
Bishop R. E. Jones.

TREASURER AND ATTORNEY-IN-FACT

Rev. George C. Douglass Cincinnati, Ohio.

The Faculty

THE REV. FRANKLIN HALSTED CLAPP,
B.D., Th.M., D.D.

President and Professor of Systematic Theology

THE REV. DEMPSTER D. MARTIN, D.D.
Professor of Christian Missions

THE REV. WILLIS J. KING, S.T.B., Ph.D., D.D.
Professor of Old Testament

THE REV. JOHN R. VAN PELT, S.T.B., Ph.D.
Professor of Homiletics and Systematic Theology

THE REV. ROBERT N. BROOKS, M.A., B.D., D.D.
Professor of Church History

THE REV. WILLIAM Y. BELL, M.A., S.T.B., Ph.D.
Professor of New Testament

THE REV. JOHN W. E. BOWEN, S.T.B., Ph.D., D.D., LL.D.
Extension Secretary

THE REV. C. J. HEWITT, S.T.B., D.D.
Visiting Professor of Rural Sociology

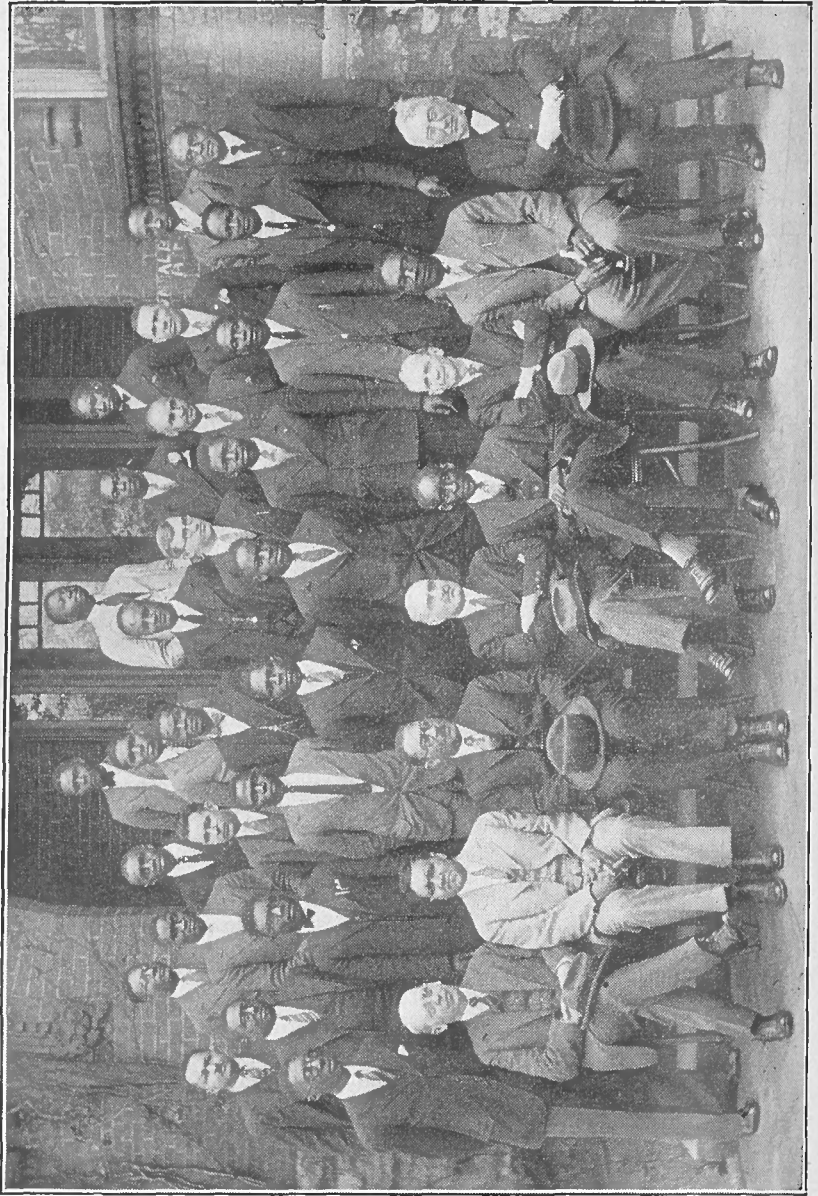
PROFESSOR FREDERICK D. HALL, Mus. B.
Instructor in Music

PROFESSOR J. R. VAN PELT
Librarian

PROFESSOR R. N. BROOKS
Registrar

PROFESSOR DEMPSTER D. MARTIN
Director of the School of Missions and Secretary of the Stewart
Missionary Foundation for Africa

MISS LOUISE TITUS
Office Assistant



THE MISSIONARY CONVENTION GROUP—1928

The Stewart Missionary Foundation for Africa

TRUSTEES

Bishop W. P. Thirkield, D.D., LL.D.	New York City.
The Rev. G. Grant Stewart	Pacific Palisades, Calif.
Mr. E. L. Stewart, Attorney-at-Law	San Diego, Calif.
The Rev. W. S. Bovard, D.D., LL.D.	Chicago, Ill.
President F. H. Clapp, Th.M., D.D.	Atlanta, Ga.
The Rev. D. D. Martin, D.D.	Atlanta, Ga.
The Rev. George C. Douglass, D.D.	Cincinnati, Ohio.

EXECUTIVE COMMITTEE

Bishop W. P. Thirkield, G. Grant Stewart, F. H. Clapp,
D. D. Martin.

FACULTY OF STEWART FOUNDATION SCHOOL OF MISSIONS

F. H. Clapp, President.

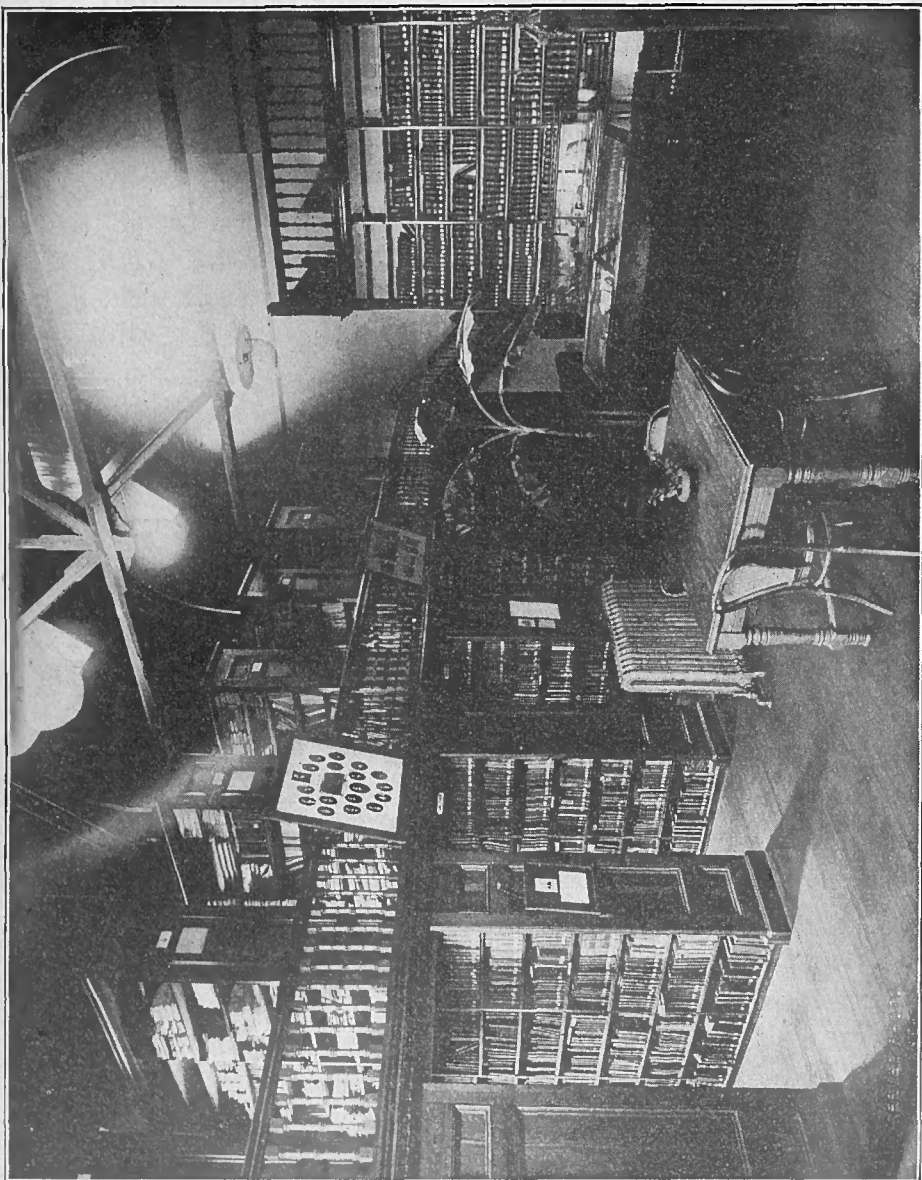
D. D. Martin, Director and Secretary.

The Faculty of Gammon Theological Seminary also teach in the School of Missions.

Miss Ernestine McGill, of the Atlanta School of Social Work,
Special Lecturer on Social Service and Case Work.

Miss Lucile Stokes, of Morris Brown University, Assistant.

Professor H. E. Archer, M.D., of Clark University, Lecturer
on Hygiene and Health.



AN INTERIOR VIEW OF THE LIBRARY

WHY TAKE THEOLOGICAL TRAINING?

The need of more well trained men for the Christian ministry has become imperative since the educational opportunities have become more general and the cultural average of our congregations has risen. The day is past when zeal alone will suffice for religious and moral leadership. The adequate direction of the religious thought and life of a community requires, as St. Paul put it, "zeal according to knowledge".

"A blind man sitting in the chimney corner", says Robert South, "is pardonable enough, but sitting at the helm is intolerable".

Much of modern life and teaching is unsettling to Christian faith, and the minister of today needs a thorough educational preparation in order that he may discern what is of permanent value in modern thought and be able to relate the truth of current teaching to the highest realization of the Christian faith and life in the world of today.

THE PURPOSE OF GAMMON

The aim of the Seminary is to give to young men, who seem to be called to the ministry, an adequate preparation for the all important task of religious leadership. This involves a working knowledge of the Old and New Testaments, a reasonable familiarity with the historic background of the Church, an appreciative understanding of the basic doctrines of the Christian faith, the acquirement of effectiveness in preaching the Gospel message, and a masterful grasp of the problems of religious and moral leadership.

Above all, the supreme importance of the personal life is emphasized and a deeper experimental knowledge of Christ is encouraged. The ideal set before the students is not the mere acquirement of intellectual skill, but the achievement of a radiant Christian personality in sympathetic touch with the deepest needs of mankind.

THE FACULTY

The supreme essential of a Theological Seminary, humanly speaking, is its Faculty and Gammon has been eminently fortunate through the years in having teachers who were men of stalwart Christian character and high scholarly attainments. They have been men of intellectual virility, sincere reverence, profound faith, and transparent honesty. Clear and forceful as has been their teaching, the potency of their strong personalities has been a still greater factor in the enrichment of the student life.

Three additions to the Faculty will be made at the opening of the Seminary for the Fall term of 1928.

The new President, who comes directly from three years of graduate study and service at Drew Theological Seminary, will teach several classes in Systematic Theology besides caring for the administrative duties of his office.

Professor William Y. Bell comes to take the Chair of New Testament and is eminently prepared for this important department. He is a graduate of Lane College, Garrett Biblical Institute, and has received the degree of Doctor of Philosophy from Yale University.

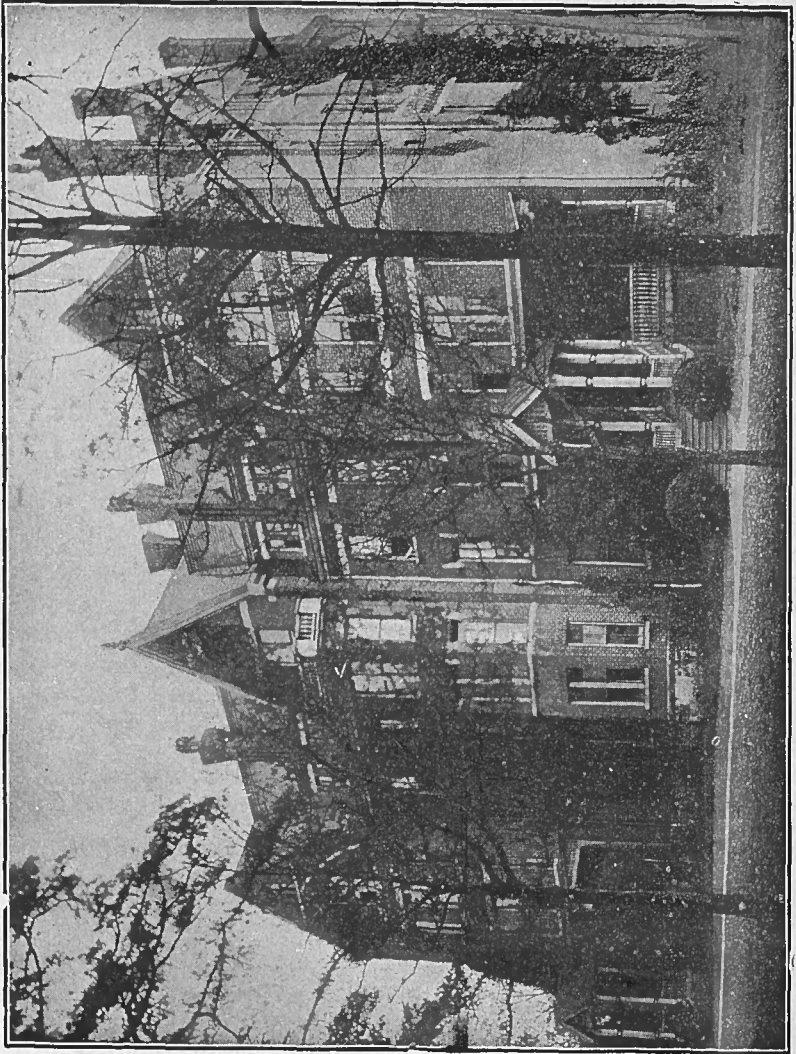
Professor C. J. Hewitt, who comes as visiting professor from the Department of the Rural Church and Rural Sociology in the Board of Home Missions, will teach in this department for the first semester. Professor Hewitt has had wide experience in the pastorate and was Professor at Garrett Biblical Institute for several years. He is a specialist in the field of Rural Sociology.

THE LIBRARY

Next to the Faculty, the Library of a Seminary is of signal importance for here the student has access to the best thought of all the ages. At Gammon we have one of the finest Theological Libraries in the South. The number of volumes and pamphlets is in excess of 20,000 and the number is increasing each year. Many of the books are rare and of great value. In addition to the standard commentaries and reference books in the several departments there are special features of striking interest.

The collection relating to Negro slavery and emancipation in this country and in Africa contains many rare volumes. The literature of Foreign Missions, especially Missions in Africa, is abundant. One collection of seventy-five books deals with the language and educational problems in Africa and includes versions of the Bible, hymnals, and other books in native dialects.

The cataloguing and classifying has been brought up to date and the interior of the building has been thoroughly renovated, so that the bright attractiveness of the Library makes the opportunity for study and research all the more appealing.



GAMMON HALL—MEN'S DORMITORY

HISTORICAL STATEMENT

Gammon Theological Seminary was founded through the foresight of Bishop Henry White Warren and the Christian philanthropy of Mr. E. H. Gammon. The Bishop spent his first episcopal quadrennium in Atlanta and with characteristic penetration he quickly discerned that the greatest need of the Negro Race was a Theological Seminary to train their moral and religious leaders. The name of Mr. Gammon, of Batavia, Illinois, was suggested to Bishop Warren as one who was interested in the Negro Race and likely to see the great importance of the project he had in mind. The matter was presented to this keen layman in the Bishop's persuasive manner and after conference and full consideration he made an initial gift of \$25,000.00 for the establishment of a Biblical Department in Clark University. The Bishop at the same time agreed to raise \$20,000.00 for the erection of a Theological Hall. The Rev. Wilbur P. Thirkield, then a young preacher from Cincinnati and now Bishop, was secured as the first teacher, and the work was actually begun in 1883.

Though the beginning was small, Mr. Gammon's interest increased as he saw the work develop and his gifts multiplied. Finally he established an independent Theological Seminary, well endowed for that day, and having a strong Faculty, adequate buildings, and an excellent curriculum. Professor Thirkield was made the first President.

The importance of the Institution may be inferred from the words of the Reverend Atticus G. Haygood, Bishop of the Methodist Episcopal Church, South,

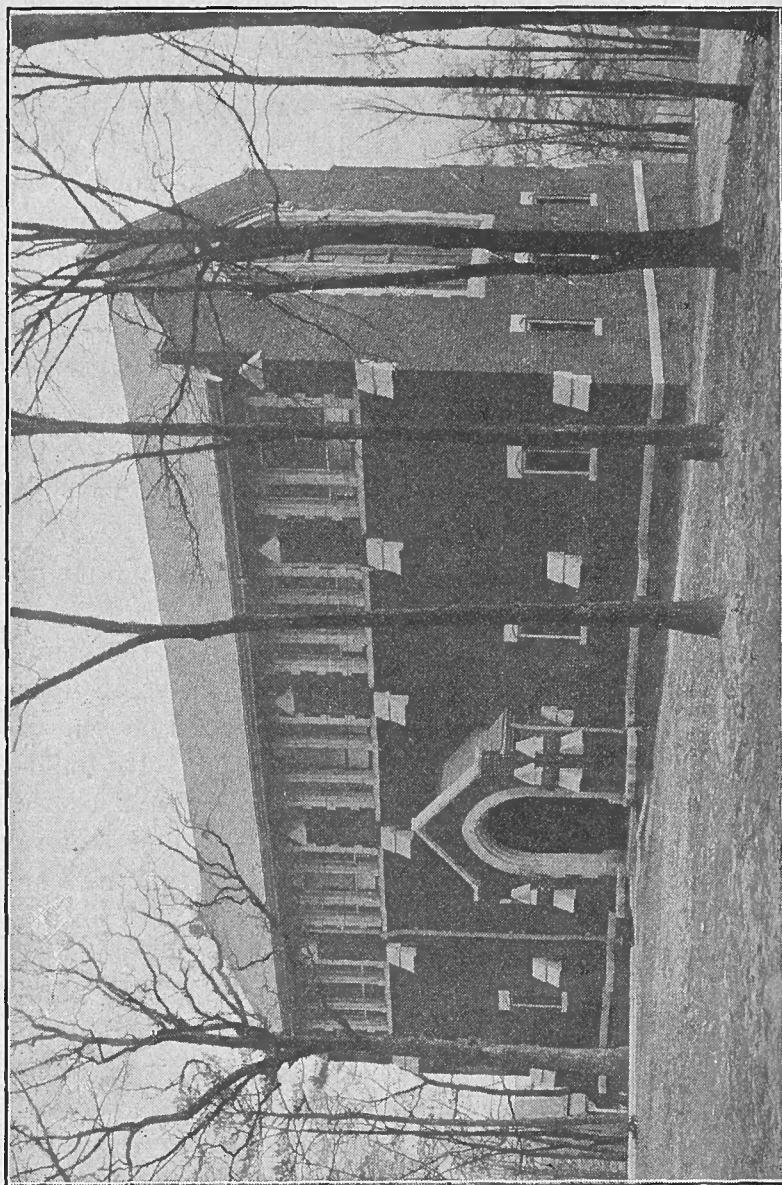
spoken in a public address at the opening of Gammon's fourth year: "It may be questioned whether any single Institution under the care of the Methodist Episcopal Church holds a place of responsibility equal to that which is possible to the Gammon School of Theology. . . . It may be questioned whether any single Institution in the Southern States could not better be spared."

The years have abundantly justified such words, for more than 1,500 students who have entered the ministry have received their training here. About half of these have taken the full courses required for the various Degrees, Diplomas, or Certificates. Among its Alumni are counted Bishops of the Methodist Episcopal Church and of the African Methodist Episcopal Church; Editors, Secretaries, District Superintendents, College Presidents, Professors in Colleges and Theological Seminaries, and leading Pastors in the various denominations of the Negro branch of the great Church of Christ. The sons of Gammon may be found in every Southern State, in not a few of the Northern States, and on the Mission Field. Everywhere they are devotedly and effectively doing the work of the Kingdom. The students have come from nearly every State in the Nation, and from Africa, South America, Panama, Cuba, and the British West Indies. They have come largely from the Methodist Episcopal Church, but also in goodly numbers from the Baptist, Congregationalist, Presbyterian, Protestant Episcopal, Wesleyan, Colored Methodist Episcopal, African Methodist Episcopal, African Methodist Episcopal Zion, and other denominations. Gammon today is the one outstanding institution in the world for the training of the Negro Ministry.

LOCATION

The Seminary is located in Atlanta, Georgia, the leading City of the South between Washington and New Orleans. It is situated 1,050 feet above sea level and has one of the best all year-round climates in the country. It is the natural capitol of a vast area that stretches from Virginia to Louisiana. As such it is strategic from the commercial, social, and religious points of view. It is a center for the education of Negroes, since not less than four Colleges are established there for that purpose. Besides there are in the City or immediate neighborhood at least five other Institutions of higher learning. The Churches of Atlanta, for both races, are strong and numerous, so that every type of modern church activity may be studied in life and action.

The beautiful campus, located at the terminus of Capitol Avenue, contains seventeen and one-half acres of fine rolling land. It is the highest point in the vicinity of the City, and is covered by a lovely grove of pines and oaks. Electric cars of the South Pryor Line run to its gates and along its extensive frontage. Its buildings overlook Atlanta, the dome of the State House being in full view. It would be difficult to find a more central, accessible, and beautiful site. Adjoining the campus of Gammon Theological Seminary, with only a road between them, is the large and fine property of Clark University. Thus we have on the campus of Gammon a place of quiet and beauty, near enough to the heart of a great city to feel its problems, yet sufficiently secluded to permit undistracted study and concentrated preparation for the great task of the ministry.



BOWEN HALL—REFECTORY

THE RELIGIOUS LIFE OF THE SEMINARY

Since the Christian religion is preeminently Life, the Seminary seeks to cultivate the personal experience of God as the dominant fact in the consciousness of the student. The basic value of religious emotions is recognized and also the importance of associating all such emotions with their ethical implications.

Each class session is begun in the attitude of worship, and usually with song and prayer. Every school day at noon a Chapel Service is held and the entire Faculty and Student Body have the opportunity of joint public worship. Also on Tuesday afternoons a devotional meeting is held and the students have the inspiration of a personal testimony service. The fervor and uplift of this gathering has been of untold benefit to the students through the years.

On Sunday morning a Church School is conducted jointly with Clark University and the Adult Bible Class has proven a most wholesome hour to the Gammon students. Sunday afternoon a Vesper Service is held in Crogman Chapel of Clark University. Members of both Faculties take part in the conduct of these helpful services and frequently eminent preachers from various parts of the country occupy the pulpit. The regular administration of the Lord's Supper is likewise a time of spiritual uplift and quickened faith.

There is also an Annual Ordination service for students who are to be ordained Deacons or Elders during the school year. Upon presenting certificates of election to orders by their Annual Conferences, they are ordained by the resident Bishop of the area, who visits the school regularly to conduct such a service.

The Young Men's Christian Association of the Seminary has been another strong factor in promoting the spiritual and social life of the Institution. It seeks to cooperate with the Faculty in bringing about the best measures for the social, moral, and religious welfare of the school. It sends its representatives to the great gatherings of the Association and the reports of such conferences and inspiration there received have had a wholesome and stimulating effect on the student life.

FACULTY ADVISERS

Upon being enrolled in the Seminary, each student is assigned by the Registration Committee to one of the members of the Faculty who will act for that Semester as his special Adviser in regard to his studies and in other matters of both an academic and a personal nature. At the beginning of the Second Semester all students will be reassigned for the balance of the year. The value of this friendly counsel will depend largely upon the frank confidence which the student exercises toward his Adviser.

SUPERVISED FIELD WORK

By cooperation with the various religious organizations in and about Atlanta an opportunity is given for students to have supervised field work. Classes, clubs, societies, and services of various types are conducted by the students under the direction of a member of the Faculty. Reports on this work are brought to the class room and the session becomes a clinic on pastoral leadership in the various activities of the church.

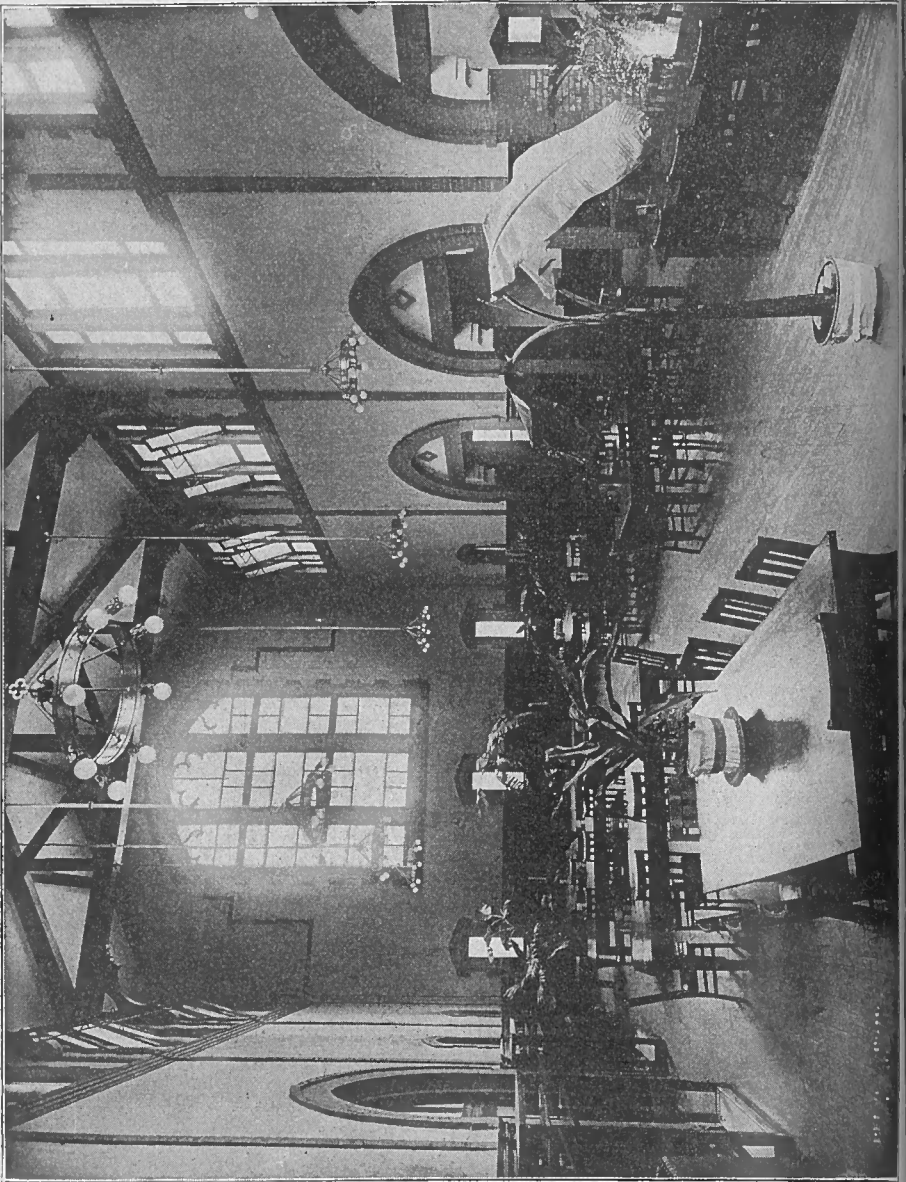
Courses and Awards

THE BACHELOR OF DIVINITY DEGREE

The regular Seminary Degree Course is open only to students who have received the Bachelor of Arts degree or its equivalent from an accredited college. When such students have completed the regularly prescribed work of the three-year course and have to their credit ninety semester hours they will be granted the Bachelor of Divinity degree.

A number of colleges are seeking to correlate more perfectly the college and professional training whereby the fourth college year may be covered by studies taken in the Theological Seminary. A student who has completed the Junior year in such a college may be admitted to the Degree Course in Gammon upon the presentation of a written statement signed by the proper official and certifying that the Bachelor of Arts degree will be conferred by that College when the three year course is completed at Gammon.

Because of the increasing number of college graduates who are applying for theological training the Seminary will provide, from now on, classes exclusively for college graduates. This provision will apply to Juniors who enter in the Fall term of 1928. The courses for college graduates will be extended in the Fall of 1929 to include the Middle year, and in 1930 to include the Senior year. So that College Graduates entering the Junior Class in 1928 will have a full three year course of distinctly graduate work.



THE DIPLOMA COURSE

The Diploma Course is open to those who have been graduated from an accredited High School or have had the equivalent of that training. After three years in the prescribed Seminary Course and a total credit of ninety semester hours, the diploma of the Seminary is awarded.

Clark University is cooperating with Gammon so that a High School graduate, by combining courses in the two schools, may complete the full College and Seminary work in six years and receive both the Bachelor of Arts and the Bachelor of Divinity degrees in that period. A number of students who realize the high value of both courses but need to shorten the period of training take advantage of this combination.

THE BIBLE TRAINING SCHOOL

The Bible Training School is intended for those mature students who have had but limited opportunity for schooling and have awakened to the need for special training late in life. The equivalent of an eighth grade education is required for entrance in this school. Those enrolled in the Bible Training School also take courses in the High School grades at Clark University, which is on an adjoining Campus. In this way a capable and faithful student may complete the High School training and pass into the Diploma Course of Gammon.

Women who desire to prepare for various forms of Christian service are admitted on the same terms of scholarship as the men. The number of women to be admitted is limited to the dormitory accommodations in Thayer Home.



THE GAMMON QUARTET

These four singers, who comprised the Quartet of the past year, represented the Seminary most creditably in the field of music. They all are degree men and expect to return for another year to complete their course.

The Courses of Study

BY DEPARTMENTS

Key—In designating the several courses the following method is used: C indicates that the course is for College Graduates; D indicates that the subject is for students in the Diploma Course; B indicates courses in the Bible Training School. The first numeral signifies the department to which a course belongs; 1—The Old Testament; 2—The New Testament; 3—Church History; 4—Systematic Theology; 5—Practical Theology; 6—Christian Missions; 7—Religious Education. The other two figures designate the number of the course in a particular Department, and when the final numeral is odd, the course is given in the First Semester, and when the final numeral is even, the course occurs in the Second Semester.

DEPARTMENT OF OLD TESTAMENT

Professor King

C 111—Introduction to the Old Testament. A critical study of the literature of the Old Testament with reference to the origin, date, authorship and content of the several books. Open to College Graduates. Required of Degree Juniors. Three hours a week for First Semester. M. W. F. at 8 A. M.

C 112—Old Testament History. A general survey of the historical development of the Hebrew people from the earliest times to the Christian Era. Open to College Graduates. Required of Degree Juniors. Three hours a week the Second Semester. M. W. F. at 8 A. M.

D 113—Introduction to Biblical Literature. This course introduces the student to certain fundamental problems connected with the study of the Bible, such as an analysis of the Books of the Bible, the scientific approach to Bible Study and a brief survey of the literature of the Old Testament. Required of Junior Diploma students. Two hours a week the First Semester. Tu. Th. at 10 A. M.

D 114—The History of Israel. A survey of Hebrew history adapted to the needs of students in the Diploma Course. Two hours a week the Second Semester. Tu. Th. at 10 A. M.

DB 115—Hebrew Prophets I. A study of the prophetic movement in Israel with exposition of the following outstanding prophets: Amos, Hosea, Isaiah, Jeremiah, Ezekiel and Deutero-Isaiah. Required of Diploma and Bible Training School Middlers. Three hours a week the First Semester. M. W. F. at 10 A. M.

DB 116—Hebrew Prophets II. An exposition of the prophets of the late period of Israel's history. Elective for Diploma Middlers and required of Bible Training School Middlers. Two hours a week the Second Semester. Tu. Th. at 8 A. M.

D 122—The Religious Teaching of the Old Testament. A systematic study of the teaching of the Old Testament relative to the topics God, Man, Sin, Forgiveness, Problem of Suffering, Messianic Hope, Future Life. Required of Degree and Diploma Seniors. Three hours a week the Second Semester. M. W. F. at 10 A. M.

B 123—A Survey of the Old Testament. The course aims to give to the student a general knowledge of the Old Testament. It is required of Bible Training School Juniors. Three hours a week the First Semester. M. W. F. at 10 A. M. Professor Bowen.

CD 117—Beginning Hebrew I. Elective for students in both the College and Diploma groups who give evidence of sufficient proficiency in the language to warrant their taking the course. Three hours a week the First Semester. Given in alternate years. Not offered 1928-1929.

CD 118—Beginning Hebrew II. Elective for College and Diploma students who have taken course CD 117. Three hours a week the Second Semester. Given in alternate years. Not offered 1928-1929.

CD 119—Hebrew Seminar in Genesis. Elective for members of any class who have had introductory Hebrew. Offered in alternate years if a sufficient number elect. Two hours a week the First Semester. Offered 1928-1929. Tu. Th. at 3:30 P. M.

CD 120—Hebrew Seminar in Psalms. Elective to those who have taken Hebrew Seminar in Genesis. Two hours a week the Second Semester. Given in alternate years. Offered 1928-1929. Tu. Th. at 3:30 P. M.

DEPARTMENT OF NEW TESTAMENT

Professor Bell

C 211—Introduction to the New Testament. This course deals with the origin, date, authorship, and outlines of the books of the New Testament. It is open to College Graduates only and is required of Juniors in the Degree Course. Two hours a week the First Semester. Tu. Th. at 8:00 A. M.

C 212—**The Gospels.** This course deals with the synoptic problems, the authorship of John, and gives special emphasis to the life and teachings of Christ. Open to College Graduates only and is required of Juniors in the Degree Course. Three hours a week the Second Semester. M. W. F. at 9:00 A. M.

D 213—**A Survey of the New Testament.** This course aims to familiarize the student with the books of the New Testament and lay the foundation for later study. Required of Juniors in the Diploma Course. Two hours a week the First Semester. M. W. at 9:00 A. M.

D 214—**The Synoptic Gospels—The Teachings of Jesus.** An interpretation of the principles and teachings of Jesus as a basis for understanding his personality and work. Required of Juniors in the Diploma Course. Two hours a week the Second Semester. Tu. Th. at 8:00 A. M. Professor Van Pelt.

DB 215—**The Epistles.** This course is devoted to thorough study of several of the Epistles. Required of Diploma and Bible Training School Seniors. The course is given in alternate years, two hours a week. Not offered 1928-1929.

DB 216—**Acts of the Apostles.** This study deals with the development of the early church, the transition of the church from Jewish to Gentile dominance, and the life of the Apostle Paul. It is required of Middlers in the Degree and Diploma Courses and in the Bible Training School. Three hours a week the Second Semester. M. W. at 2:30 P. M. Th. at 11:00 A. M.

D 217—**Beginners Greek I.** The rudiments of Greek grammar are studied and the foundation is laid for reading New Testament Greek. Required of all candidates for the B.D. degree. Elective for others. Given alternate years—offered 1928-1929. Three hours a week the First Semester. M. W. F. at 11:00 A. M.

D 218—**Beginners Greek II.** This continues the elementary study of Greek with readings from the Gospels. Required of all candidates for the B.D. degree. Elective for others. Given alternate years—offered 1928-1929. Three hours a week the Second Semester. M. W. F. at 11:00 A. M.

D 219—Greek New Testament I. Critical readings from the Synoptic Gospels. Elective for those who have completed Beginners Greek. Three hours a week, **First Semester.** Given alternate years—not offered 1928-1929.

D 220—Greek New Testament II. Critical readings and interpretation from the earlier Epistles of Paul. Elective for those who have had Greek New Testament I. Three hours a week, **Second Semester.** Not offered 1928-1929.

D 221—Greek Exegesis I. An elective for students who want advanced training in the teachings of New Testament Greek. The Epistle to the Romans is studied critically and interpreted. Open to Seniors who are qualified. Two hours a week, **First Semester.** Given alternate years—not offered 1928-1929.

D 222—Greek Exegesis II. A continuation of Greek Exegesis I. The Epistle to the Hebrews is given critical study and interpretation. Elective for Seniors who have had Greek Exegesis I. Two hours a week, **Second Semester.** Given in alternate years—not offered 1928-1929.

B 224—Outline Studies in the New Testament. This covers a course in the Gospels emphasizing the Life and Teaching of Christ, and deals in outline with the Epistles. Required of Bible Training School Juniors. **Second Semester,** three hours weekly. M. W. F. at 10:00 A. M. Professor Bowen.

DEPARTMENT OF CHURCH HISTORY

Professor Brooks

C 311—General Church History I. This covers the period of the ancient church to 590 and the period of the mediaeval church to 1517. The inter-relations of movements and events together with matters of perspective and proportion will be insisted upon in considering the meaning of great events. Basic requirements for Juniors in the Degree Course. Two hours weekly, **First Semester.** Tu. Th. at 9:00 A. M.

C 312—General Church History II. A continuation of C 311 covering the period of the Reformation (1517—1648) and the period of the modern church from the close of the Thirty Years War to the present time. Required of Juniors in the Degree Course. Two hours weekly, **Second Semester.** Tu. Th. at 9:00 A. M.

C 314—Development of Negro Religion in our American Life. This course aims to show the effect of American Institutions on Negro thought and life. Lectures and reports based on scientific research. Required of Degree students in the Senior year and elective to Degree students in the Middle year. Three hours weekly, **Second Semester.** M. W. F. at 10:00 A. M.

D 315—A History of the Christian Church to the Reformation. This course aims to give a survey of the outstanding happenings in the life of the Church from the Apostolic Age to the Protestant Reformation. The practical endeavor will be to make the map of Christian history the permanent possession of every student. Required of Juniors in Diploma Course. Three hours weekly, **First Semester.** M. W. F. at 8:00 A. M.

D 316—A History of the Modern Christian Church. This course is a continuation of D 315, and is an effort at mental map-making in the period since the beginning of the Reformation. Required of Juniors in the Diploma Course. Three hours weekly, **Second Semester.** M. W. F. at 8:00 A. M.

D 317—American Church History. This course aims to show the development of Christianity under conditions peculiar to our American life, and stresses the denominations which have contributed in any large way to the religious life of our nation. Elective for Middlers in the Diploma Course. Three hours weekly, **First Semester.** M. W. F. at 9:00 A. M.

C 318—The History of Christian Thought. A study of the historic development of Christian Doctrine. Open as an elective to Degree Seniors. Three hours a week, **Second Semester.** Given in alternate years. Not offered in 1928-1929.

D 319—A History of the Modern Church, from the close of the Thirty Years War to the present time. Open to Seniors of the Diploma Course as elective. Three hours weekly, **First Semester.** M. W. F. at 2:30 P. M.

B 321—Land Marks of Church History I. The aim of the course is to give the student in outline the development of the Christian Church from its beginning to the Reformation. Required of Bible Training School Middlers. Three hours a week, **First Semester.** M. at 3:30 P. M. Tu. Th. at 11:00 A. M.

B 322—Land Marks of Church History II. This is a continuation of course B 321 and covers the historic outline down to the present time. Required of Bible Training School Middlers. Three hours a week, **Second Semester.** M. W. F. at 11:00 A. M.

DB 324—History of Methodism. A study of the rise, development and distinctive characteristics of Methodism; its principles, polity and program, and the relation of Methodism to the larger life of the world. Elective to Middlers and Seniors in the Diploma Course and Seniors in the Bible Training School. Two hours weekly, Second Semester. Tu. Th. at 3:30 P. M. Professor Bowen.

DEPARTMENT OF SYSTEMATIC THEOLOGY

President Clapp—Professor Van Pelt

C 411—Introduction to Philosophy. This course is designed to supply an important part of the necessary background for the successful study of Theology. It is planned to bring the student to a clear conception of the nature and task of Theology in general and to guide him in an historical, critical, and constructive inquiry into the most important of the persistent problems of Philosophy. The bearing of Philosophy upon the Christian faith receives special attention. Required of Juniors of the Degree Course who have not credit for a similar course pursued in college. Three hours a week, First Semester. M. W. F. 10:00 A. M. Professor Van Pelt.

C 412—The Nature and Validity of the Christian Religion. The nature of religion as such. The historic development of the Christian religion. The genesis of traditional dogmas. The conception of God and the certainty of faith. Required of Juniors in the Degree Course. Three hours a week, Second Semester. M. W. F. at 10:00 A. M. President Clapp.

D 413—The Christian Doctrine of Redemption. This deals with the nature of Man and Sin, the person and work of Christ, the Kingdom of God and the Church, the presence and power of the Holy Spirit. Required of Seniors in Diploma and Degree Courses. Three hours weekly, First Semester. M. W. F. at 9:00 A. M. President Clapp.

D 415—Christian Doctrine I. This course starts with an inquiry into the specific nature of Christianity, the nature and means of Revelation, and concludes with a constructive study of the doctrines of God and Creation. Required of Middlers in the Diploma and Degree Courses. Three hours weekly, First Semester. M. W. F. at 8:00 A. M. Professor Van Pelt.

D 416—Christian Doctrine II. This is a continuation of course D 415 and deals with the doctrines of Man, Sin, the person and work of Christ, the person and work of the Holy Spirit, the Church, and the Christian Hope. Required of Middlers in the Diploma and Degree Courses. Three hours weekly, Second Semester. M. W. F. at 8 A. M. Professor Van Pelt.

D 418—Modern Problems of the Christian Faith. This course falls mainly in the field of Apologetics, but does not exclude the treatment of problems in Dogmatics and Ethics. The particular problems chosen for consideration may vary from year to year, as the changing currents of religious thought may suggest. Some of the problems immediately in view are: The Bible question; the finality of Christ; the bearings of evolutionistic Science and Philosophy upon the Christian faith; the question of the reunion of the Churches, and other like topics. Elective for Seniors of the Diploma and Degree Courses. Two hours weekly, **Second Semester.** Given in alternate years. Not offered 1928-1929. Professor Van Pelt.

B 421—Systematic Theology I. The essentials of Christian Doctrine are set forth with the minimum of technical treatment. Required of Middlers in the Bible Training School. Three hours weekly, **First Semester.** M. W. F. at 9:00 A. M. Professor Van Pelt.

B 422—Systematic Theology II. This is a continuation of course B 421 and stresses the vital practical aspects of Christianity. Required of Middlers of the Bible Training School. Three hours weekly, **Second Semester.** M. W. F. at 10:00 A. M. Professor Van Pelt.

D 423—Christian Doctrine in the Poets. This course aims to help the student to a reasonable familiarity with the religious and philosophical teachings of some of the great English Poets of the Nineteenth Century. Elective to Middlers and Seniors of the Diploma and Degree Courses. Two hours weekly, **First Semester.** Tu. Th. at 11:00 A. M. President Clapp.

D 425—Christian Ethics. The course aims at a clear apprehension of the ethical implications of the Christian faith. The principle of faith in Christ is set forth as the condition of the progressive realization of the ideal in the individual and in society. Special attention is given to the application of Christian principles to the concrete problems of our day. Elective for Seniors in the Diploma and Degree Courses. Three hours weekly, **First Semester.** Given in alternate years. Not offered in 1928-1929. Professor Van Pelt.

DEPARTMENT OF PRACTICAL THEOLOGY

Professors Van Pelt, Bell, Bowen, Hall, Hewitt

DB 511—Preaching in Theory and Practice. The art of preaching and the place of preaching in the life of the Church. The basic principles of sermon building and effective delivery. Required of Middlers in the Diploma, Degree, and Bible Training School Courses. Two hours weekly, **First Semester.** Tu. Th. at 9:00 A. M. Professor Bell.

DB 512—The Personal Basis of the Sermon. The course includes a study of great preachers and their sources of power with a view to discovering the most effective mental habits and methods of spiritual culture. Required of Middlers in the Diploma, Degree, and Bible Training School Courses. Two hours weekly, **Second Semester.** Tu. Th. at 9:00 A. M. Professor Bell.

DB 513—The Art of Public Speaking. The purpose of this course is to develop skill in public speaking. Emphasis is placed upon the proper use and control of the voice, and the expressive coordination of the entire person. Elective for Middlers in the Diploma and Degree Courses, and in the Bible Training School. Two hours weekly, **First Semester.** Tu. Th. at 10:00 A. M. Professor Bowen.

DB 514—The Psychology of Public Speaking. An analysis of the methods of persuasive public speaking; the various attitudes of audiences; methods of holding attention and securing action. Elective for Middlers in the Diploma and Degree Courses and in the Bible Training School. Two hours weekly, **Second Semester.** Tu. Th. at 10:00 A. M. Professor Bowen.

D 515—Homiletical Treatment of Selected Scripture. Instead of the homiletical praxis in the form of original sermon outlines or finished sermons, this course offers two features: (1) the inquiry into the question of the best homiletical approach to a number of selected passages; (2) critical reports or analyses of representative sermons by eminent preachers. Of these two parts, the first is offered by the instructor, the second is supplied by the students. Elective to Seniors of the Diploma and Degree Courses. Two hours weekly, **First Semester.** Tu. Th. at 10:00 A. M. Professor Van Pelt.

DB 517—Sight Singing and Voice Building I. This course deals with the rudiments of music and with note reading in all the keys. Vocal analysis with attention to the placement and development of the singing voice will be studied also. Required of Juniors in the Diploma Course and Bible Training School. Elective to others. One hour weekly, **First Semester.** M. at 2:30 P. M. Professor Hall.

BD 518—Sight Singing and Voice Building II. A continuation of course DB 517 with the addition of methods of organizing and leading the church choir. Selection of voices, choice of material and the general function of musical organizations in the church will be studied. Required of Juniors in the Diploma Course and Bible Training School. Elective to others. One hour weekly, **Second Semester.** M. at 2:30 P. M. Professor Hall.

DB 519—Gospel Singing I. A course aiming to prepare the individual singer for leadership in the singing of gospel and evangelistic songs. Elective for all classes. One hour weekly, **First Semester.** W. at 1:30 P. M. Professor Hall.

DB 520—Gospel Singing II. The course is a continuation of DB 519 and presents a careful study of the different forms of religious music used by the soloist in the regular and in the evangelistic service. Elective for all classes. One hour weekly, **Second Semester.** W. at 1:30 P. M. Professor Hall.

DB 522—Hymnology and Public Worship. This course is based upon the recognition of the immense significance of hymnody and the spirit and organization of public worship for the life of the church and of the individual Christian. The hymnody of the church is studied historically and the characteristics of the hymns of the different periods and the great spiritual movements of the church are noted. The tunes also are studied according to their periods and schools of church composition. In addition to hymnody, the course covers the whole question of public worship. The aim is to help the student to a clear understanding of the broad fundamental spiritual principle that underlies true Christian public worship, and then to develop sound judgment in the application of that principle. Required of Middlers in the Diploma and Degree Courses, and Seniors in the Bible Training School. Three hours weekly, **Second Semester.** M. W. F. 9:00 A. M. Professor Van Pelt.

DB 523—The Church and the Community. An analysis of the Rural Community for the purpose of discovering how the Church can assist in the development of a community life which is in harmony with Christian ideals. Required of Seniors in the Diploma and Degree Courses and in the Bible Training School. Elective to others. Three hours weekly, **First Semester.** M. W. F. at 8:00 A. M. Professor Hewitt.

D 525—Rural Church Methods. This course is designed to assist in securing a better understanding of the country and an appreciation of its values and opportunities. Successful plans and methods which are being used in rural churches will be studied. Elective to Seniors in the Diploma and Degree Courses. Two hours weekly, **First Semester.** Tu. Th. at 9:00 A. M. Professor Hewitt.

C 527—Administration of the Local Church. A study of Church organization and direction. Problems of building, equipment, financing, securing lay leadership, forming an educational program, and conducting services and business meetings. Required of Juniors in the Degree Course. Two hours weekly, **First Semester.** Tu. Th. at 10:00 A. M. Professor Hewitt.

DB 529—Recreational Program for the Country Church. A study of the educational and spiritual values of recreation with lectures on the development of a recreational program. Elective for Seniors and Middlers in all Courses. Two hours weekly, First Semester. Tu. Th. at 1:30 P. M. Professor Hewitt.

B 530—Christian Stewardship. The course emphasizes the principles of Stewardship as applied to the whole of life and suggests plans for the development of the stewardship ideals in the local church. Required of Middlers in the Bible Training School. One hour weekly, Second Semester. Tu. at 8:00 A. M. Professor Martin.

DB 531—Clinic for Student Pastors. This course is designed especially to help students who are now in the pastorate. It has the value of supervised field work. All problems of a pastor in the local church will be discussed. Elective to all Seminary students. One hour weekly, First Semester. M. at 1:30 P. M. Professor Hewitt.

DB 533—Constructive Evangelism. The course aims to cover the field of Pastoral Evangelism. It includes preparation and methods in public service, and the organization and leadership of a Church for Personal Evangelism. Required of Seniors in the Diploma and Degree Courses, and Elective for Seniors in the Bible Training School. Two hours weekly, First Semester. Tu. Th. at 2:30 P. M. Professor Hewitt.

D 535—The Making and Delivery of Sermons. This course directs the selection, analysis, and development of texts; supervises the writing of sermons; and gives opportunity for the public delivery of sermons with constructive criticism and personal suggestions as to the spirit, form, content, and delivery. Required of Seniors in the Degree and Diploma Courses. Two hours weekly, First Semester. Tu. Th. at 8:00 A. M. Professor Bowen.

DEPARTMENT OF CHRISTIAN MISSIONS

Professor Martin

C 612—Problems of Modern Missions. In a rapidly changing world the missionary motive must have new and fresh application. In this course the attempt is made to rethink the missionary obligations of the Church in the face of present day conditions. Required of Juniors in the Degree Course. Two hours weekly, Second Semester. Tu. Th. at 10:00 A. M.

DB 611—Introduction to Christian Missions. A comprehensive survey of the missionary enterprise of the Church and a study of the motive and method of promoting Foreign Missions. Required of Juniors in the Diploma Course and Bible Training School. Two hours weekly, First Semester. Tu. Th. at 9:00 A. M.

DB 613—The History of Missions. The course begins with Christ and his Apostles and comes to the development of Modern Missions, with a survey of mission fields including the home base and home mission fields. Elective to Middlers of the Diploma and Degree Courses, and required of Middlers in the Bible Training School. Three hours weekly, First Semester. M. W. F. at 11:00 A. M.

D 614—Comparative Religions. A study of the History and Philosophy of the leading religions of the world. A comparative study of the idea of God, the doctrine of Sin, Salvation, and the Future Life. Elective for Seniors of the Diploma and Degree Courses. Three hours weekly, Second Semester. M. W. F. at 8:00 A. M.

DB 616—Missionary Interpretation. A study of the Biblical teaching for the missionary enterprise. Elective for Seniors in the Diploma and Degree Courses and in the Bible Training School. Two hours weekly, Second Semester. Tu. Th. at 9:00 A. M.

DB 618—The Study of Africa. Its history, people, present condition and need. A survey of its mission fields with special emphasis placed on study of Liberia. Elective for Diploma Juniors and Bible Training School Middlers. Two hours weekly, Second Semester. Tu. Th. at 1:30 P. M.

DB 619—Race Relations. Open forum in the study of interracial questions so vital to American life, also a survey of the African background. Elective to all students. One hour weekly, First Semester. Tu. at 8:00 A. M.

D 615—A Survey of Home Missions. An outline course in the field of Home Missions, with plans and suggestions for a missionary educational program in the local church. Elective for Seniors and required of Middlers in the Diploma and Degree Courses. Three hours weekly, First Semester. M. W. F. at 11:00 A. M. Professor Hewitt.

DEPARTMENT OF RELIGIOUS EDUCATION

C 713—History of Religious Education. A survey of the history of Religious Education in this country from the beginning of the Republic to the present time, with special reference to the Sunday (Church) School. Elective for Juniors in the Degree Course. Two hours weekly, First Semester. Tu. Th. at 11:00 A. M. Professor King.

C 714—Principles and Methods in Teaching Religion. A survey of the development of the curriculum of religious education, with lectures on the selection and use of available material. Elective for Juniors in the Degree Course. Two hours weekly, **Second Semester.** Tu. Th. at 11:00 A. M. Professor King.

DB 715—Psychology of Childhood and Adolescence. A study of the psychology of childhood through all its stages and the type of approach to be made by the religious leader. Required of Juniors in the Diploma and Degree Courses and in the Bible Training School. Two hours weekly, **First Semester.** Tu. Th. at 2:30 P. M. Professor King.

DB 716—Organization and Administration of the Church School. A study of the Modern Church School program with a view to the use of the Graded Lessons and Literature in all the departments. In addition to the work of the class-room, surveys of near-by school communities are made and programs for these schools outlined by members of the class under supervision. Required of Juniors in the Diploma and Degree Courses and in the Bible Training School. Two hours weekly, **Second Semester.** Tu. Th. at 2:30 P. M. Professor King.

DB 718—Methods in Teaching Missions. Principles and methods of conducting Missionary Classes and promoting Missionary interest in all departments of the local church. Elective for Juniors in the Diploma Course and required of Juniors in the Bible Training School. Two hours weekly, **Second Semester.** Tu. Th. at 11:00 A. M. Professor Martin.

ELECTIVE COURSES

In order that any Elective Course shall be given according to the announcement in the schedule, at least six qualified students must elect that course.

ELECTIVES IN CLARK UNIVERSITY

In addition to the subjects offered in the regular departments of the Seminary, students in the Degree and Diploma Courses are allowed to elect courses in the College Department of Clark University, particularly in the fields of Economics, Sociology, Philosophy, Psychology and Astronomy. The number of hours permitted in such courses is limited and subjects should be selected only in conference with one's Faculty Adviser.

SCHEDULE OF CLASSES FIRST SEMESTER

S—SENIOR SUBJECT; M—MIDDLER SUBJECT; J—JUNIOR SUBJECT.

Hours	Monday	Tuesday	Wednesday	Thursday	Friday
8	C 111—J King. D 315—J Brooks D 415—M Van Pelt DB 523—S Hewitt.	C 211—J Bell. D 535—S Bowen. DB 619—All Martin.	C 111—J King. D 315—J Brooks. D 415—M Van Pelt. DB 523—S Hewitt.	C 211—J Bell. D 535—S Bowen.	C 111—J King. D 315—J Brooks. D 415—M Van Pelt. DB 523—S Hewitt.
9	D 213—J Bell. D 317—M Brooks. D 413—S Clapp. B 421—M Van Pelt.	C 311—J Brooks. DB 511—M Bell. D 525—S Hewitt. DB 611—J Martin.	D 213—J Bell. D 317—M Brooks. D 413—S Clapp. B 421—M Van Pelt.	C 311—J Brooks. DB 511—M Bell. D 525—S Hewitt. DB 611—J Martin.	D 317—M Brooks. D 413—S Clapp. B 421—M Van Pelt.
10	DB 115—M King. B 123—J Bowen. C 411—J Van Pelt.	D 113—J King. DB 513—M Bowen. D 515—S Van Pelt. C 527—J Hewitt.	DB 115—M King. B 123—J Bowen. C 411—J Van Pelt.	D 113—J King. DB 513—M Bowen. D 515—S Van Pelt. C 527—J Hewitt.	DB 115—M King. B 123—J Bowen. C 411—J Van Pelt.
11	D 217—J Bell. DB 613—M Martin. D 615—M-S Hewitt.	D 423—M-S Clapp. C 713—J King. B 321—M Brooks.	D 217—J Bell. DB 613—M Martin. D 615—M-S Hewitt.	D 423—M-S Clapp. C 713—J King. B 321—M Brooks	D 217—J Bell. DB 613—M Martin. D 615—M-S Hewitt.
12	CHAPEL	CHAPEL	CHAPEL	CHAPEL	CHAPEL
1:30	DB 531—All Hewitt.	DB 529—M-S Hewitt.	DB 519—All Hall.	DB 529—M-S Hewitt.	
2:30	D 319—S Brooks. DB 517—J Hall.	DB 533—S Hewitt. DB 715—J King.	D 319—S Brooks.	DB 533—S Hewitt. DB 715—J King.	D 319—S Brooks.
3:30	B 321—M Brooks	CD 119—M-S King.		CD 119—M-S King.	

SCHEDULE OF CLASSES SECOND SEMESTER

S—SENIOR SUBJECT; M—MIDDLER SUBJECT; J—JUNIOR SUBJECT.

Hours	Monday	Tuesday	Wednesday	Thursday	Friday
8	C 112—J King. D 316—J Brooks. D 416—M Van Pelt. D 614—S Martin.	DB 116—M King. B 530—M Martin. D 214—J Van Pelt.	C 112—J King. D 316—J Brooks. D 416—M Van Pelt. D 614—S Martin.	DB 116—M King. D 214—J Van Pelt.	C 112—J King. D 316—J Brooks. D 416—M Van Pelt. D 614—S Martin.
9	DB 522—M-S Van Pelt. C 212—J Bell.	C 312—J Brooks. DB 512—M Bell. DB 616—S Martin.	DB 522—M-S Van Pelt. C-212—J Bell.	C 312—J Brooks. DB 512—M Bell. DB 616—S Martin.	DB 522—M-S Van Pelt. C 212—J Bell.
10	D 122—S King. B 224—J Bowen. C 314—M-S Brooks. C 412—J Clapp. B 422—M Van Pelt.	D 114—J King. DB 514—M Bowen. C 612—J Martin.	D 122—S King. B 224—J Bowen. C 314—M-S Brooks. C 412—J Clapp. B 422—M Van Pelt.	D 114—J King. DB 514—M Bowen. C 612—J Martin.	D 122—S King. B 224—J Bowen. C 314—M-S Brooks. C 412—J Clapp. B 422—M Van Pelt.
11	D 218—J Bell. B 322—M Brooks.	C 714—J King. DB 718—J Martin.	D 218—J Bell. B 322—M Brooks.	C 714—J King. DB 718—J Martin. DB 216—M Bell.	D 218—J Bell. B 322—M Brooks.
12	CHAPEL	CHAPEL	CHAPEL	CHAPEL	CHAPEL
1:30		DB 618—J-M Martin.	DB 520—All Hall.	DB 618—J-M Martin.	
2:30	DB 216—M Bell. DB 518—J Hall.	DB 716—J King.	DB 216—M Bell.	DB 716—J King.	
3:30		CD 120—M-S King. DB 324—M-S Bowen.		CD 120—M-S King. DB 324—M-S Bowen.	

Terms of Admission

NON SECTARIAN

Although Gammon Theological Seminary is maintained by the Methodist Episcopal Church it is non-sectarian in its policy. Some of its Trustees and Professors are members of other denominations and students of all Christian Churches are received on equal terms and accorded like privileges in the Seminary. The spirit of Christian Brotherhood is so genuine that no student need be embarrassed because of affiliation with another Church.

CREDENTIALS

In order to be enrolled as a student in the Seminary the applicant is required to present to the Registrar, Professor R. N. Brooks, credentials attesting the Christian character and worthiness of the candidate to receive the training.

Students belonging to the Methodist Church are expected to present a Local Preachers' license or recommendation from the Quarterly Conference or Official Board.

Students from other Denominations must have a written endorsement from the proper officials of their own Church.

In addition to the written endorsement of character and Church standing, applicants are required to present certificates indicating the amount of academic training they have had. Diplomas from College or High School are expected from those who have had such training.

SPECIAL STUDENTS

Students who do not desire to take the full three years course may be enrolled as Special Students upon approval by the Faculty and be admitted to such classes as they are prepared to take creditably.

LATE REGISTRATION FEE

It is of the highest importance that every student in the Seminary shall begin his courses promptly with the opening of the Fall Semester. Late enrollment is a hindrance to the class and a serious handicap to the individual involved. In order to encourage prompt enrollment and the best results in class work there is a late registration fee of two dollars charged for students who enroll after September Thirtieth.

GRADUATION REQUIREMENTS

For graduation from the Seminary a total of ninety hours is required. Of these, eight hours must be in the Department of Old Testament, eight hours in the Department of New Testament, eight hours in the Department of Church History, eight hours in the Department of Systematic Theology, sixteen hours in the Department of Practical Theology, four hours in the Department of Missions, and four hours in the Department of Religious Education.

A minimum also of eight hours of either Greek or Hebrew is required of Candidates for the Bachelor of Divinity Degree.

The minimum number of hours per week for a regular student is fifteen, and the maximum is eighteen.

ROOMS

Rooms in the men's dormitory have steam heat, electric lights, and the necessary furniture. In addition the beds are provided with mattresses, sheets, and pillow cases: The students are required to bring blankets, quilts, and towels. Application for accommodation in the dormitory should be sent in as early as possible for assignments are made in the order of application. No rental fee is charged for these rooms, but the student is held responsible for the preservation of the room and furnishings in as good condition as when he took possession. Dormitory privileges in Gammon Hall are accorded only to those who take at least eight hours of regular Seminary class work, or a majority of hours in any joint course with Clark University.

COTTAGES

A few cottages are available for students who were married previous to their enrollment at Gammon. A small annual fee of ten dollars is made for the use of these cottages and is payable in advance. There is such demand for these cottages that applications should be made a year before enrollment.

REFECTORY

All students who room in the dormitory are expected to board in the Refectory. This commodious hall will be renovated and redeccorated for the opening of the Seminary and will be more pleasant and attractive than ever. Wholesome meals are served for the remarkably low cost of \$2.50 per week, payable in advance. No refund for board will be allowed for less than five consecutive days absence, and advance notice of the expected absence must be given in the Seminary Office.

Financial Matters

EXPENSES

The expenses are so surprisingly low that no student for the ministry, who has health and the willingness to work, need be deprived of the training. No charge is made for tuition or rooms in the men's dormitory. An incidental fee of \$7.50 each semester is required for light and heat. This must be paid at the beginning of each term, and no student will be enrolled or admitted to classes until this is cared for at the office.

The following is the estimated cost per student for the First Semester:

Incidental fee	\$ 7.50
Key deposit50
Books	10.00
Table Board, at \$2.50 per week, for 17 weeks	42.50
Laundry (Bed linen)	3.50
	<hr/>
	\$64.00

The estimated cost for the Second Semester is the same, except that there is no key deposit,—\$63.50, making the total for the year \$127.50. There is also a Diploma fee of \$5.00 for the seniors.

SELF-HELP

Many students find it necessary to earn their way through the Seminary. For the first year it is especially advantageous that a student have enough money

ahead to meet the bulk of his expenses, so that he can give his full time and attention to his studies. Opportunities for student work are offered on the campus and in the buildings and several students defray part of their expenses in this way. A few students find part time positions in the City of Atlanta in restaurants, office buildings and private homes. A young man of energy and determination can make his way if he has saved up a reasonable amount for a reserve fund.

THE STUDENT LOAN FUND

A limited number of worthy students, members of the Methodist Episcopal Church, may secure loans from the Student Loan Fund administered by the Board of Education of the Methodist Episcopal Church. Christian character, satisfactory scholarship, promise of usefulness, financial responsibility, and the recommendation of the church to which the applicant belongs are essential to a loan. Each borrower must sign an interest bearing promissory note. Detailed information may be secured from the Seminary Office.

SCHOLARSHIPS

A few scholarships are available for men of college training and unusual promise of usefulness. These require the evidence of special merit in scholarly ability and high devotion to the work of the Church. Friends who realize the importance of securing more well trained men for the ministry will find the Gammon Scholarship Fund a most satisfactory investment and most productive of the good they seek.

STUDENT DEPOSITS

For the convenience of the students and the safety of their funds, money may be deposited in the Seminary Office and drawn upon when needed, as in any banking system. Students are warned that it is unsafe to keep money in their rooms or to carry it about on their persons. The banks of Atlanta charge a monthly fee of one dollar, unless the daily balance averages one hundred dollars, so it is more economical for the student to do his banking through the Seminary Office.

It is also wise and prudent for the students during the summer vacation to send to the Seminary Office the money which they desire to save for the next year's schooling. The receipt of this money will be acknowledged promptly and the amount placed in the Seminary's Deposit account in the city bank.

PRIZES

There are a few prizes offered each year. The Reverend Horace L. Jacobs, D.D., of Shamokin, Pennsylvania, has for a number of years offered a cash prize of \$10.00 for the best essay on some aspect of Christology. This has proved a very valuable stimulus to research and has brought rewards to more than the prize winners.

The Stewart Missionary Prizes are for the best hymns, essays, or orations on the Missionary work of the Church. There are first and second prizes for both hymns and orations. These are awarded annually.

There are also scholarship prizes offered by the local Fraternities in the Department of Christian Doctrine, the Department of Church History, and in the interest of a full College Preparation. Detailed announcements

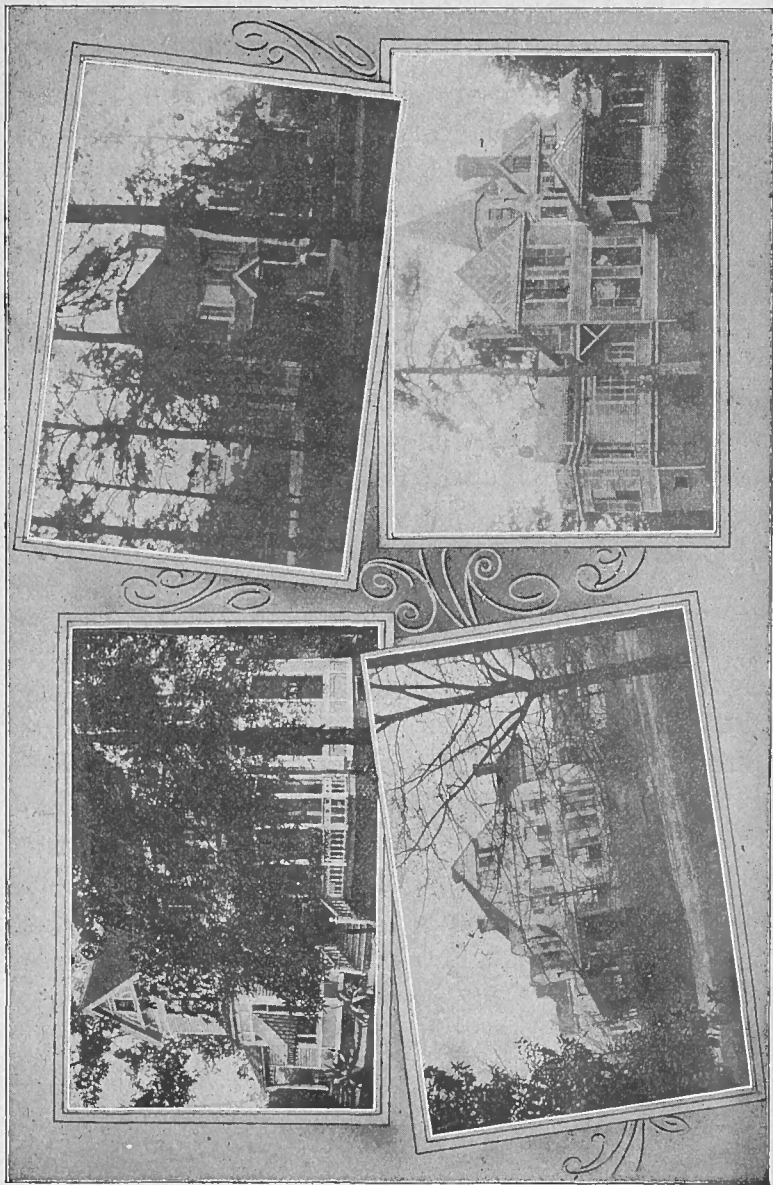
regarding these prizes will be made during the Seminary year.

THE GAMMON LYCEUM

The Lyceum Society affords the students fine opportunities for literary culture. Its weekly programs include orations, essays, debates, music and addresses delivered by invited speakers and special lectures given by the Professors. The frequent discussion of theological questions and debates upon the great moral, social, and political issues of the day are especially beneficial to ministers. The Lyceum also gives practical illustrations of the judicial and administrative procedure of the Church. The meetings of the Society are open to all the men of the student body.

THE WOMAN'S CLUB

The Woman's Club is composed of the wives of the Seminary students and other women who may be studying in the Seminary proper or in the School of Missions. The Club functions both as a Reading Circle and a Social Organization. It means much to the intellectual life of the members. The Seminary encourages the wives of married students to avail themselves of all these privileges and to enroll in such classes in either the Seminary or the School of Missions as they are prepared to take. The Club has inspired not a few young women to complete courses leading to the Certificate or Diploma awards.



FOUR OF THE RESIDENCES IN FACULTY ROW

School of Missions

D. D. MARTIN, Director

The School of Missions is sponsored by the Stewart Missionary Foundation for Africa, a department of Gammon Theological Seminary, having special charter which provides that it shall be maintained as a part of the Seminary. The majority of the trustees are from Gammon Theological Seminary and the Board of Education of the Methodist Episcopal Church, and all the Seminary faculty teach in the School of Missions. Its classes are open to both theological and lay students.

PURPOSE

The School of Missions is intended to prepare the minister for leadership in missionary work in this country, or as a missionary to the foreign field. It aims to prepare all other students, men and women, for the specific field of Christian service to which they may be called, or assist in such preparation.

RELATION TO OTHER SCHOOLS

The School of Missions, with selected courses from other departments of the Seminary, from Clark University, and from Home Economic Courses in Thayer Home provides excellent training for parish helpers, social workers, Y. M. C. A. or Y. W. C. A. secretaries. Graduates from this school have been accepted by the Woman's Home Missionary Society as deaconesses, the entire deaconess training course being well covered by work offered here. Those desiring a nurse training course will find provision made for them in Atlanta, and in the Flint--Goodrich Hospital at New Orleans.

HEALTH LECTURES

Professor H. E. Archer, M.D., of Clark University, gives each year a series of lectures on Hygiene and Health, one hour per week the first semester. The course embraces such topics as The Human Body, Nourishment, Preparation of Food, Digestion, Elimination, Disorders, Recreation, and Protection of the Body. These lectures are open to all School of Missions students, and include instruction and demonstration in first aid and further care of sick and accident victims.

THE CERTIFICATE COURSE

This is a short course intended primarily for the wives of Seminary students who may not have had thorough schooling before marriage, and need help to be at their best in parish work. Those having had school advantages find it advantageous to take additional subjects in Clark University.

DIPLOMA COURSE

All candidates for the Diploma Course in the School of Missions must have finished a standard High School or its equivalent, and shall meet the same requirements in class standing as those in Diploma Courses in the other departments of the Seminary. Courses are offered with variations to meet the needs of preparation for the life work anticipated by the student.

All correspondence regarding the School of Missions, or the work of the Stewart Missionary Foundation for Africa, should be addressed to the Director of the School of Missions, or to the Secretary of the Stewart Missionary Foundation, Gammon Theological Seminary, Atlanta, Georgia.



GRADUATES OF THE SCHOOL OF MISSIONS—1928

THE STEWART MISSIONARY FOUNDATION FOR AFRICA

The Stewart Missionary Foundation for Africa is incorporated under the laws of the State of Georgia and its charter provides that it shall function as the Department of Christian Missions in Gammon Theological Seminary and its General Secretary shall be professor of Christian Missions.

The Stewart Foundation School of Missions was formally organized in 1913, with the Secretary of the Stewart Foundation as Director and the faculty of the Seminary as teachers. Since 1913, in addition to providing the courses in Missions required in the Seminary, it has been graduating from its classes young women who have gone to the foreign fields or have taken up Missionary and Social Service work in the home field.

The funds for this work have thus far come entirely from a "deed of trust," executed by Rev. and Mrs. W. F. Stewart and administered by two sons who were constituted special trustees. With the recent incorporation it is believed there will be added sufficient funds to carry out to the full the high purposes of the founders of this unique and important part of the Seminary work.

"THE FOUNDATION"

The Foundation magazine, now in its eighteenth volume, began as the organ of the Stewart Missionary Foundation for Africa and edited by its General Secretary. Later it became the organ and voice of the entire Seminary with all the faculty on the editorial staff, the Secretary of the Stewart Foundation being the Editor-in-Chief. It is a regular twenty page magazine issued six times a year. The aim of the publication is to keep the work of the Seminary before its constituency; to inform the alumni of the school's activity and the achievements of their own number; and to keep the redemption of Africa ever on the mind and heart of the Church.

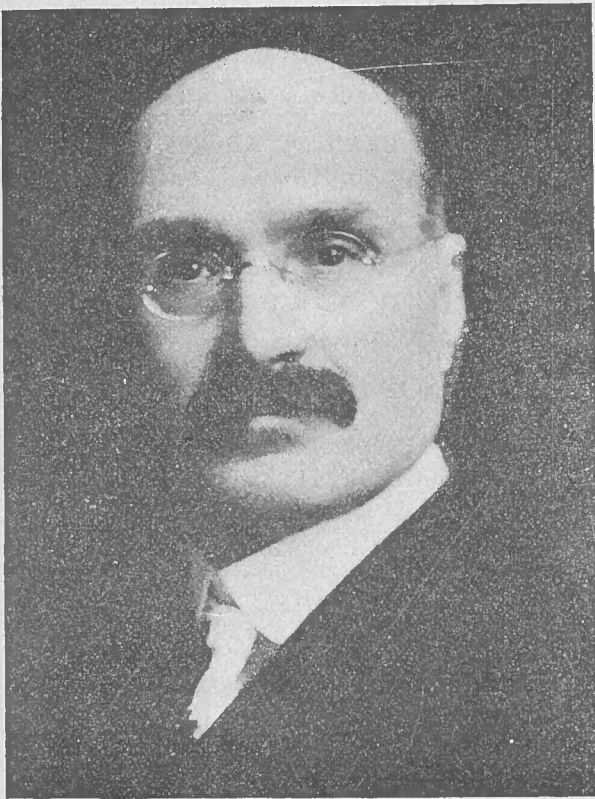
THE ATLANTA SCHOOL OF SOCIAL WORK

Students in the School of Missions, who desire special courses in Social Work, may take additional courses in the Atlanta School of Social Work. This school is in close affiliation with the Seminary, sending its specialists to lecture to our students, and receiving students from the Seminary in classes at the school.

ANNUAL CATALOGUE

— 1927-1928

SCHOOL OF THEOLOGY
SCHOOL OF MISSIONS
AND
BIBLE TRAINING SCHOOL



The Reverend George H. Trever, Ph.D., D.D., who retired from the Presidency at Commencement after twenty-four years of vigorous and effective service as Professor and as Administrator.

The Faculty

1927-1928

THE REV. GEORGE HENRY TREVER, Ph.D., D.D.
President and Professor of Systematic Theology

THE REV. DEMPSTER, D. MARTIN, D.D.
Professor of Christian Missions

THE REV. WILLIS J. KING, Ph.D., D.D.
Professor of Old Testament and Christian Sociology.

THE REV. JOHN R. VAN PELT, S.T.B., Ph.D.
Professor of Homiletics and Sacred Rhetoric

THE REV. ROBERT N. BROOKS, B.D., D.D.
Professor of Historical Theology

*..... Professor of New Testament Exegesis

**..... Professor of Religious Education

THE REV. JOHN W. E. BOWEN, Ph.D., D.D., LL.D.
Extension Secretary

PROF. J. R. VAN PELT
Librarian

PROFESSOR DEMPSTER D. MARTIN
Director of the School of Missions and Secretary of the Stewart
Missionary Foundation for Africa

MISS LOUISE TITUS
Bookkeeper

PROFESSOR FREDERICK D. HALL, Mus. B.
Instructor in Music

*During the year President G. H. Trever taught as previously
New Testament Exegesis.

**The work of Religious Education was divided among the other
members of the Faculty. Professor J. R. Van Pelt taught Ethics
and Apologetics.

The Student Register

1927-1928

SEMINARY SENIORS

Caldwell, Fred Douglas..... Morgantown, N. C.
Kestler Academy.

Clay, Frederick Bardwell, A.B..... Amory, Miss.
Rust College.

Collins, Kelly Alexander..... New York, New York
West Louisville Grammar.

Gerald, Charles David..... Marian Station, Md.
Princess Anne Academy.

Guyton, John Rosline, A.B..... St. Charles, Mo.
George R. Smith College.

Harewood, William Arnold..... Brooklyn, New York
Brooklyn Evening High.

Johnson, Julius Percival..... Maxton, N. C.
Lincoln University.

Jones, Henry Berkeley, A.B..... Orangeburg, S. C.
Clafin University.

Kelly, Andrew Taylor, A.B..... Maxia, Texas
Wiley College.

Lee, Frederick Douglas..... Holland, Va.
Holland Public.

McCorkle, George Washington..... Gaffney, S. C.
Biddle University.

Milbourne, O'Connell..... Deals Island, Md.
Morgan College.

Mitchell, Charles David..... Detroit, Mich.
Cass High.

Nyabongo, Hosea Kamyarusoke..... British East Africa
Kings School Budo.

Perry, Cyrus Winburn, A.B. ----- Kernsburn, N. C.
Bennett College.

Rawlings, William Lewis ----- Lynchburg, Va.
Lynchburg High.

Ross, Walter Nathan, A.B. ----- Natchez, Miss.
Natchez College.

White, Hubbard Meharry ----- Mason, Tenn.
Le Moyne High.

SEMINARY MIDDLEERS

Bain, John Chester ----- Los Angeles, Calif.
Los Angeles High.

Briggs, Emanuel Leroy ----- Chicago, Ill.
Walden College.

Brower, Charles Herbert ----- Philadelphia, Pa.
Agricultural and Technical College.

*Bynum, Richard Henry, A.B. ----- Holly Springs, Miss.
Rust College.

Calhoun, Nimrod Cautious ----- Alpine, Ala.
Talladega College.

Cameron, Walter James, A.B. ----- Chipley, Ga.
Clark University.

Carruthers, Jacob Hudson ----- Hubbard, Tex.
Arkansas City High.

Coble, Allison Henry ----- Graham, N. C.
Lincoln Academy.

Farmer, Lawrence Laurie ----- Cottageville, S. C.
Allen University.

Greene, Horace Henry ----- Louisville, Ky.
Central High.

Greene, John Aaron, A.B. ----- San Antonio, Tex.
Clark University.

**Deceased.*

- Hodges, Virnal Clingman, LL.B. Norfolk, Va.
Howard University.
- Holloway, Cornelius Benjamin, B.S. Greenville, S. C.
Clark University.
- Lee, Braxton T., Jr. San Antonio, Tex.
Sam Huston College.
- McDonald, Harry James Huntington, W. Va.
Douglas High.
- McRae, Robert Maxton, N. C.
Bennett College.
- Paul, Edward Andrew, A.B. Knoxville, Tenn.
Knoxville College.
- Robinson, Walter Albert, A.B. Smithville, Tex.
Sam Huston.
- Sims, Otis Marviless Atlanta, Ga.
Paine College.
- Soma, Jonas Donald Portuguese, W. Africa
Talladega College.
- Washington, John Raymond Parkersburg, W. Va.
Parkersburg High.

SEMINARY JUNIORS

- Amey, John Thomas Atlanta, Ga.
Washington High.
- Ayer, Robert Bunyan Anderson, S. C.
Benedict College.
- Brown, Clayton Robert, A.B. Florence, S. C.
Morris College.
- Dent, George Ashton Washington, D. C.
Dunbar High.

- Dykes, Dewitt Sanford Newport, Tenn.
Morristown Normal and Industrial.
- Ellison, William Matthew Yoakum, Texas
Clark University.
- Green, James Edward Newport News, Va.
Clark University.
- Haynes, Leonard, A.B. Austin, Tex.
Sam Huston College.
- Hedrick, Leroy William Asheboro, N. C.
Clark University.
- *James, Clarence Timothy Branchville, S. C.
South Carolina State College.
- Jones, Hubert Clyde Chattanooga, Tenn.
Howard High.
- Laster, Daniel James Atlanta, Ga.
Newnan Graded.
- McLilly, Horace Nathaniel Detroit, Mich.
Clark University.
- McRae, Evreege, A.B. Maxton, N. C.
Sam Huston College.
- Mickle, Joshua Wesley Charlotte, N. C.
Clark University.
- Murchison, E. P., Jr. Fort Worth, Tex.
Clark University.
- Seabrook, John Jarvis, LL.B. Orangeburg, S. C.
Howard University.
- Shockley, Benjamin Franklin Council Clinton, Tenn.
Clark University.
- Spears, Augustus George, A.B. Monroe, La.
New Orleans College.

*Deceased.

Stewart, Benjamin Wallace, A.B. Laurinburg, N. C.
Morgan College.

Talbert, Charles Andrus, A.B. Holly Springs, Miss.
Rust College.

Taylor, Prince Albert, Jr. Laurel, Miss.
Clark University.

Wattley, James Llewellyn Austin, Tex.
Sam Huston College.

Williams, Harry Holman Allendale, Miss.
Clark University.

Woods, William McKinley Port Arthur, Tex.
National Bible Institute.

SPECIAL STUDENTS

Harris, Marquis Lafayette Cleveland, Ohio
Clark University.

Howe, Jesse Robert Maysville, Ky.
Clark University.

Richardson, Carson Harris Bishopville, S. C.
Clark University.

Stemley, Carey David Baton Rouge, La.
Clark University.

GRADUATE STUDENT

Brown, Giles Calvin Cowpens, S. C.
Clark University.

BIBLE TRAINING SCHOOL SENIORS

Richardson, Vivian Vernon Bishopville, S. C.
Bishopville Graded.

Grant, Roland Philadelphia, Pa.
Princess Anne.

BIBLE TRAINING SCHOOL MIDLERS

- ✓ Buggs, Lum Mirdas Chattanooga, Tenn.
Howard Night School.
- ✓ Conyers, William Kingstree, S. C.
Tomlinson Graded.
- ✓ Dorsey, Irby Cleveland, Ohio
East Tech.
- ✓ Johnson, Julius Clio, S. C.
Clio Graded.
- ✓ Phoenix, Nathaniel Fort Pierce, Fla.
Morris Street High.
- ✓ Scriber, Archie Lincoln Crisfield, Md.
Princess Anne.
- ✓ Tollerson, Henry Caezer San Antonio, Tex.
Sam Huston College.
- ✓ Wilson, Cassius Calhoun Pocabontas, Miss.
Haven Institute.
- ✓ Wright, Benjamin Franklin Alleyton, Tex.
Alleyton Public.

BIBLE TRAINING SCHOOL JUNIORS

- Allen, DeWitt Moses Five Points, Ala.
Five Points, Alabama.
- Anderson, Charlie Easley, S. C.
Easley Graded.
- Bearden, Irvin Harold Atlanta, Ga.
Clark University.
- Booker, Charles James Evergreen, Ala.
Lomax and Hammond.

- Brewster, O. K. ----- Maysfield, Tex.
Maysville Public.
- Cofield, Oliver Anderson ----- South Atlanta, Ga.
Fayette County Public.
- Conners, Roy Charles ----- Easley, S. C.
Greenville.
- Crump, Alphonso Wadsworth ----- Wynona, Miss.
Rust College.
- Garrison, James Lee ----- Springfield, Ohio
Springfield High.
- o Garrison, Jesse ----- Evanston, Ill.
Clark University.
- Jackson, Luther ----- Easley, S. C.
Bellon High.
- o Knight, Theodore Roosevelt ----- Molena, Ga.
Clark University.
- Maddox, Edward Aldridge ----- Atlantic City, N. J.
Fairmount Public.
- Martin, James Russell ----- Steubenville, Ohio
Tuskegee Institute.
- Perryman, James ----- Goliad, Tex.
Goliad High.
- St. Clair, Albert Hays ----- Magnolia, Miss.
Malinda Private.
- Taylor, Samuel Lorenzo ----- Louisville, Ky.
Indianapolis Public.
- o Waters, Fred ----- Duluth, Ga.
Duluth Grammar.
- BIBLE TRAINING SCHOOL SPECIAL STUDENT
- o Hardins, Frank ----- Atlanta, Ga.
Junior High.

School of Missions

SENIOR CLASS

Miss Beatrice Brown	Cincinnati, Ohio
Miss Willia Brown	Laurel, Miss.
Mrs. Roxie A. Perry	Atlanta, Ga.
Mrs. Catharine Rawlings	Lynchburg, Va.

SECOND YEAR

Miss Isabell Maria Ambrose	Lexington, Miss.
Miss Mary L. Crosby	Coshocton, Ohio
Mrs. Othia Dorsey	Cleveland, Ohio
Mrs. Claudia M. Farmer	So. Atlanta, Ga.
Mrs. Savannah Johnson	Clio, S. C.
Mrs. Gussie Lee	San Antonio, Texas
Miss Sarah O. Neal	Rome, Ga.

FIRST YEAR

Miss Texanna Allen	Lexington, Ky.
Mrs. Lillian Brewster	Maysfield, Texas
Mrs. Annie E. Crump	Wynona, Miss.
Miss Mary Hogue	Chattanooga, Tenn.
Miss Annie B. Hubert	Naylor, Ga.
Miss Naomi Jefferson	New Orleans, La.
Mrs. Lovie Martin	Steubenville, Ohio
Mrs. Alma McRae	Franklin, N. C.
Miss Lillian Payne	Biltmore, N. C.
Mrs. Lena Perryman	Goliad, Texas
Mrs. J. L. Wattle	Austin, Texas

SPECIAL

Miss Lillian Arnold	Jonesboro, Ga.
Miss Eula V. Arnold	Jonesboro, Ga.
Miss Bessie L. Gray	Atlanta, Ga.
Mrs. Lulu Crawford	Atlanta, Ga.

SUMMARY

SEMINARY—

Seniors	19
Middlers	21
Juniors	26
Specials	4
Post Graduate	1
Total	71

BIBLE TRAINING SCHOOL—

Seniors	2
Middlers	9
Juniors	18
Special	1
Total	30

Total in the Seminary	101
Total in the School of Missions	26
Students from Clark University	40
Grand Total	167

CHURCHES REPRESENTED IN THE SEMINARY GROUP

Methodist Episcopal	83
African Methodist Episcopal	7
African Methodist Episcopal Zion	1
Colored Methodist Episcopal	2
Baptist	5
Congregationalist	2
Presbyterian	1
Total	101

The Graduating Class

1928

HONORARY DEGREES

DOCTOR OF DIVINITY

The Reverend Mordecai W. Johnson,
President of Howard University, Washington, D. C.
The Reverend John H. Lovell, '07.

DEGREES IN COURSE

BACHELOR OF DIVINITY

Frederick Bardwell Clay, A.B.	Andrew Taylor Kelly, A.B.
John Rosline Guyton, A.B.	Cyrus Winburn Perry, A.B.
Henry Berkeley Jones, A. B.	Walter Nathan Ross, A.B.
Victor A. Cooke, A.B.	Charles Tedo Wardah, A.B.

GREEK-ENGLISH DIPLOMA

Charles David Gerald	O'Connell Milbourne
William Arnold Harewood	Charles David Mitchell
Julius Percival Johnson	William Lewis Rawlings
George Washington McCorkle	Hubbard Meharry White

ENGLISH DIPLOMA

Fred Douglas Caldwell	Robert Emery Jones
Kelly Alexander Collins	Frederick Douglas Lee

CERTIFICATE

Vivian Vernon Richardson

Bible Training School

DIPLOMA

Roland Grant

SPECIAL AWARDS

H. L. Jacobs Christological Prize..... F. D. Lee
Phi Beta Sigma Fraternity Prize for Excellency in Christian
Doctrines..... V. C. Hodges
Scholarship in Historical Theology..... C. W. Perry
Omega Psi Phi Fraternity Prize for highest standing in the
three years' course..... W. A. Harewood

School of Missions

DIPLOMAS

Miss Beatrice Brown

Miss Willia Brown

Mrs. Roxie A. Perry

CERTIFICATE

Mrs. Catharine Rawlings

SPECIAL AWARD

Mrs. Lulu Crawford

STEWART FOUNDATION PRIZES

FOR ORATIONS

First..... V. C. Hodges
Second..... Braxton F. Lee, Jr.

FOR HYMNS

First..... Frederick B. Clay
Second..... George W. McCorkle