

GAMMON
THEOLOGICAL SEMINARY

AND

SCHOOL OF MISSIONS

ANNOUNCEMENTS

1932-1933



ANNUAL CATALOGUE

1931-1932

VOLUME XLIX

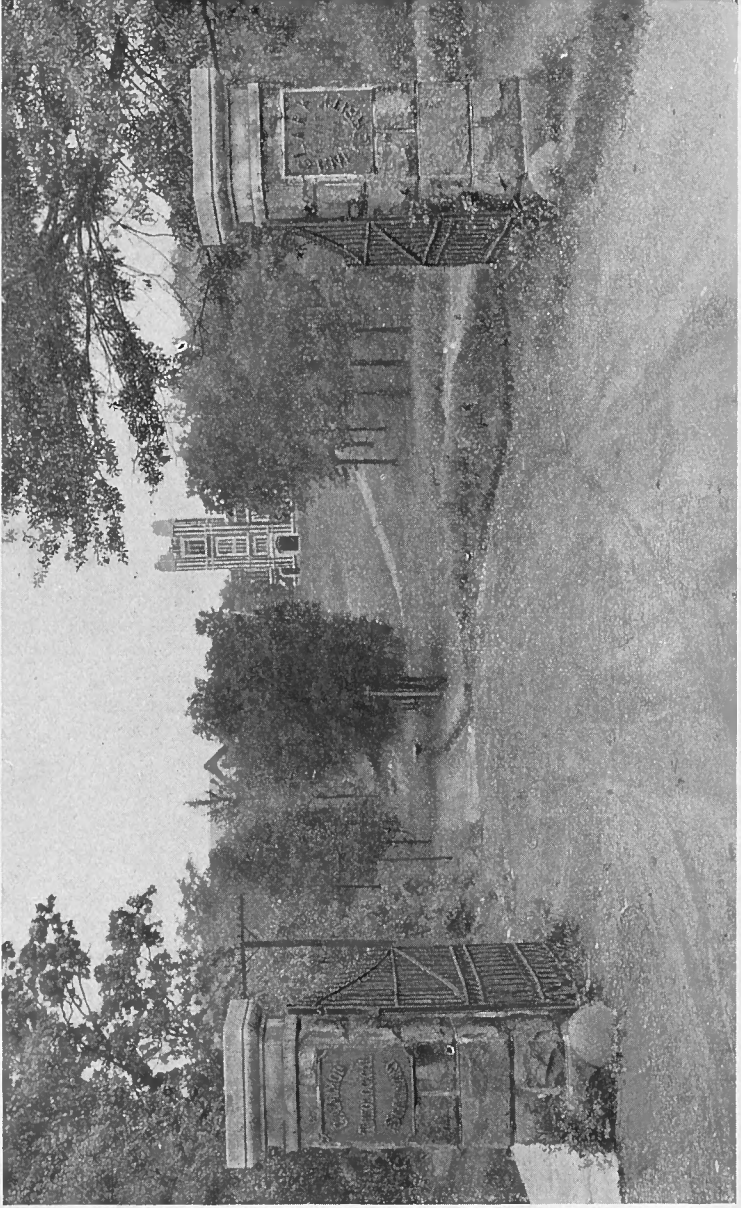
APRIL, 1932

ATLANTA, GEORGIA

*STUDY TO SHOW THYSELF APPROVED UNTO GOD, A
WORKMAN THAT NEEDETH NOT TO BE ASHAMED,
RIGHTLY DIVIDING THE WORD OF TRUTH.*
—PAUL.

TABLE OF CONTENTS

	Page
The Calendar 1932-1933	7
The Board of Trustees	8
Standing Committees	9
The School of Missions, Trustees and Faculty	9
The Faculty	11
Historical Statement	13
Location	15
The Purpose of Gammon	16
The Religious Life of the Seminary	17
The Faculty	19
The Sabbatical Year	19
The Gammon Forum	20
Faculty Advisers	20
The Library	21
Special Lectures	22
Prizes and Awards	22
Graduate Scholarships	23
Non-Sectarian	23
Credentials	25
The Graduate School	25
The Diploma Course	25
Graduation Requirements	27
Special Students	27
Conditioned Students	27
Women Students	27
The Atlanta School of Social Work	28
The Stewart Missionary Foundation for Africa	28
The School of Missions	29
The Courses of Study	33
Elective Courses	48
Electives in Clark University	49
Supervised Field Work	49
Scholarships for Advanced Study	49
Self Help	49
Refectory	50
Expenses	50
The Student Loan Fund	50
Scholarships	51
Student Deposits	51
Rooms	52
Cottages	52
Late Registration Fee	52
The Student Register	53
Summary	59
The Graduating Class	61
States Represented	62
Colleges Represented	62



THE MAIN ENTRANCE

CALENDAR 1932-1933

FIRST SEMESTER

1932

- September 27, Tuesday—Registration and assignment to classes.
September 28, Wednesday—First Chapel Service, 12:00 Noon.
September 29, Thursday—Classes begin 8:00 A. M.
October 10, Tuesday—Last day of Registration without the late registration penalty.
October 14, Friday—Matriculation Day. Address and Seminary Reception at 7:30 P. M.
November 24, Thursday—Thanksgiving Day Service
December 23, Friday—At noon, Christmas vacation begins and extends to Monday noon, January 2. Classes begin Tuesday morning, January 3.

1933

- January 2, Monday—Emancipation Day Celebration at noon.
January 16, Monday—First Semester Examinations begin and Registration for Second Semester.

SECOND SEMESTER

- January 23, Monday—Second Semester classes begin. Founder's Day Address in Thirkield Hall at 7:30 P. M. Seminary Reception in Bowen Hall, 8:30 P. M.
January 27, Friday—Last day of Registration without the late registration penalty.
February 12, Sunday—Celebration of Lincoln's and Frederick Douglass' Birthdays.
March 23, Thursday, to March 26—Annual Student Missionary Convention and Prize Contests in Crogman Chapel.
May 9, Tuesday, to May 12—Final Examinations.
May 14, Sunday—3:30 P. M. Baccalaureate Service in Crogman Chapel. 7:30 P. M., Annual Class Day Program of the School of Missions, Thirkield Chapel.
May 15, Monday—Senior Day—Class Day Exercises and Arbor Ceremony. 4:00 P. M., Annual Trustee Meeting of the Stewart Missionary Foundation. 8:00 to 10:00, President's Reception to Seniors and Alumni.
May 16, Tuesday, Alumni Day—10:00 A. M. Alumni Reunions of Classes 1893, 1903, 1913, 1923. 10:00 A. M., Annual Meeting of Gammon Trustees. 2:30 P. M. Alumni Business meeting; 7:30 P. M., Alumni Anniversary Celebrations.
May 17, Wednesday, 10:00 A. M.—Commencement Day Exercises in Gammon Chapel.

BOARD OF TRUSTEES

EX-OFFICIO

sdw
Bishop W. F. Anderson, D.D., LL.D. Boston, Mass.
The Rev. W. S. Bovard, D.D., LL.D. Chicago, Ill.
President F. H. Clapp, Th.M., D.D. Atlanta, Ga.

TERM EXPIRES IN 1932

Lewis N. Gatch, Attorney-at-Law Cincinnati, Ohio
The Rev. Wm. H. Crawford, D.D. Meadville, Pa.
The Rev. George C. Douglass, D.D. Cincinnati, Ohio
The Rev. G. Grant Stewart Covina, Calif.
The Rev. W. W. Alexander, D.D. Atlanta, Ga.

TERM EXPIRES IN 1933

Willis M. Everett, Attorney-at-Law Atlanta, Ga.
Bishop R. E. Jones, D.D., LL.D. New Orleans, La.
Bishop F. T. Keeney, D.D., LL.D. Atlanta, Ga.

TERM EXPIRES IN 1934

Bishop Wilbur P. Thirkield, D.D., LL.D. New York City
Bishop Matthew W. Clair, D.D. Covington, Ky.
The Rev. D. H. Stanton Atlanta, Ga.
The Rev. J. P. Wragg, D.D. New York City
Bishop W. J. Walls, D.D. Charlotte, N. C.

OFFICERS OF THE BOARD

President—Bishop W. P. Thirkield.
Vice-President—Bishop F. T. Keeney.
Second Vice-President—Mr. Willis M. Everett.
Secretary—Rev. D. H. Stanton.
Local Treasurer—President F. H. Clapp.

EXECUTIVE COMMITTEE

Bishop F. T. Keeney, Chairman
Willis M. Everett, Vice-Chairman Bishop R. E. Jones
D. H. Stanton, Secretary Bishop W. P. Thirkield, Ex-Officio
W. W. Alexander F. H. Clapp

TREASURER AND ATTORNEY-IN-FACT

The Rev. George C. Douglass. Cincinnati, Ohio

STANDING COMMITTEES OF
BOARD OF TRUSTEES

Bishop W. P. Thirkield as Chairman of the Board is ex-officio a member of all standing committees.

Buildings and Grounds: President ~~F. H. Clapp~~^{Clapp}; Bishop F. T. Keeney, Reverend D. H. Stanton.

Faculty and Courses of Study: President ~~F. H. Clapp~~^{Keeney}, Reverend W. W. Alexander, Bishop R. E. Jones.

Library: President F. H. Clapp, Reverend W. ~~H. Crawford~~^{Everett}, Reverend G. C. Douglass.

Nominations for the Board: Bishop F. T. Keeney, Reverend G. C. Alexander, Reverend W. W. Alexander, President ~~F. H. Clapp~~.

Finance ✓ *Everett* *Douglass ✓* *Stanton ✓*
Wheeler

THE SCHOOL OF MISSIONS
IN
Gammon Theological Seminary

Spel Finance
Douglass
Everett
Jordan

MAINTAINED BY

The Stewart Missionary Foundation
For Africa

TRUSTEES

- Bishop W. P. Thirkield, D.D., LL.D. New York City
- The Rev. G. Grant Stewart Covina, Calif.
- *Mr. E. L. Stewart, Attorney-at-Law San Diego, Calif.
- The Rev. W. S. Bovard, D.D., LL.D. Chicago, Ill.
- President F. H. Clapp, Th.M., D.D. Atlanta, Ga.
- The Rev. D. D. Martin, B.D., D.D. Atlanta, Ga.
- The Rev. George C. Douglass, D.D. Cincinnati, Ohio

EXECUTIVE COMMITTEE

Bishop W. P. Thirkield, G. Grant Stewart, F. H. Clapp,
D. D. Martin.

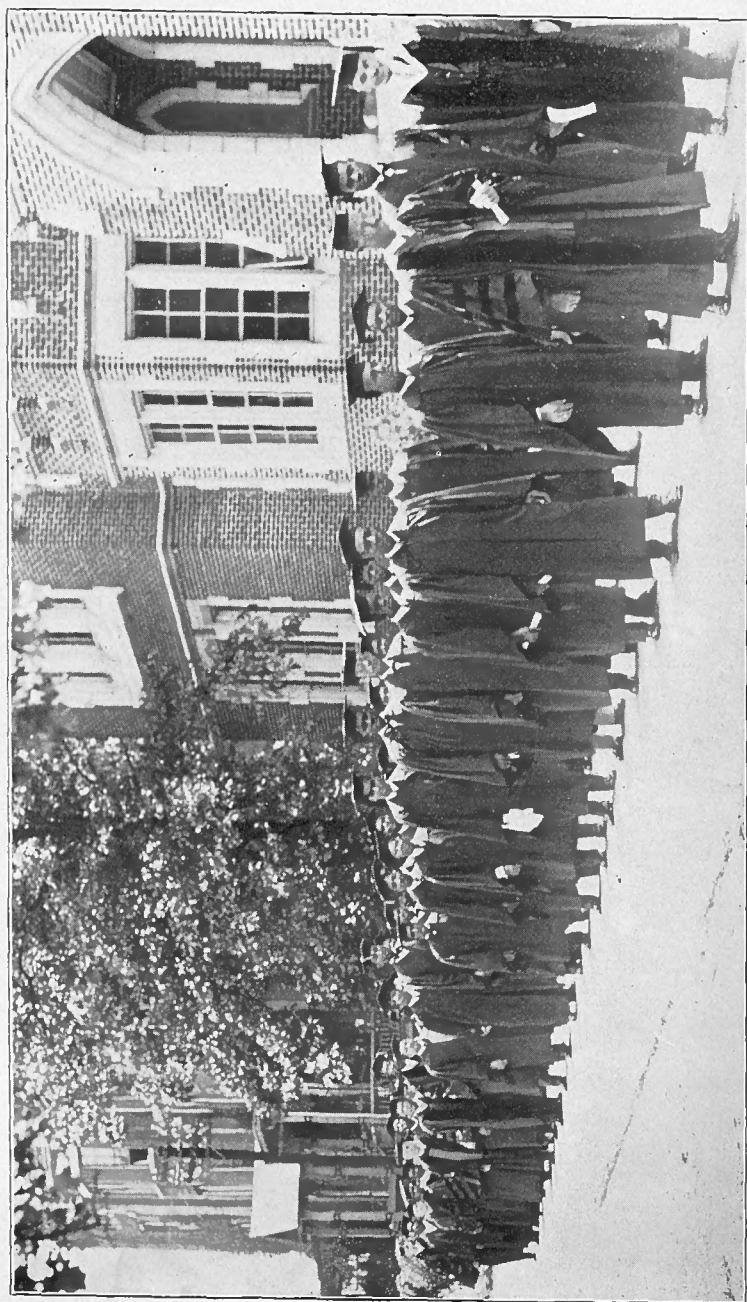
FACULTY OF STEWART FOUNDATION
SCHOOL OF MISSIONS

The Rev. F. H. Clapp, President,
The Rev. D. D. Martin, Director and Secretary.

The Faculty of Gammon Theological Seminary are also teachers in the School of Missions.

Professor H. E. Archer, M.D., of Clark University, Special Lecturer on Hygiene and Health.

*Deceased.



COMMENCEMENT PROCESSION

FACULTY

THE REV. FRANKLIN HALSTED CLAPP
B.D., Th.M., D.D.
President and Professor of Practical Theology

THE REV. DEMPSTER D. MARTIN, B.D., D.D.
Professor of Christian Missions

THE REV. JOHN R. VAN PELT, S.T.B., Ph.D.
Professor of Systematic Theology

THE REV. ROBERT N. BROOKS, M.A., B.D., D.D.
Secretary and Professor of Church History

THE REV. WILLIAM Y. BELL, M.A., S.T.B., Ph.D., D.D.
Professor of New Testament

THE REV. J. LEONARD FARMER, S.T.B., Ph.D., D.D.
Registrar and Professor of Old Testament

THE REV. JOHN W. E. BOWEN, S.T.B., Ph.D., D.D., LL.D.
Extension Secretary

THE REV. EDWARD A. PAUL B.D., S.T.M.
Instructor in New Testament

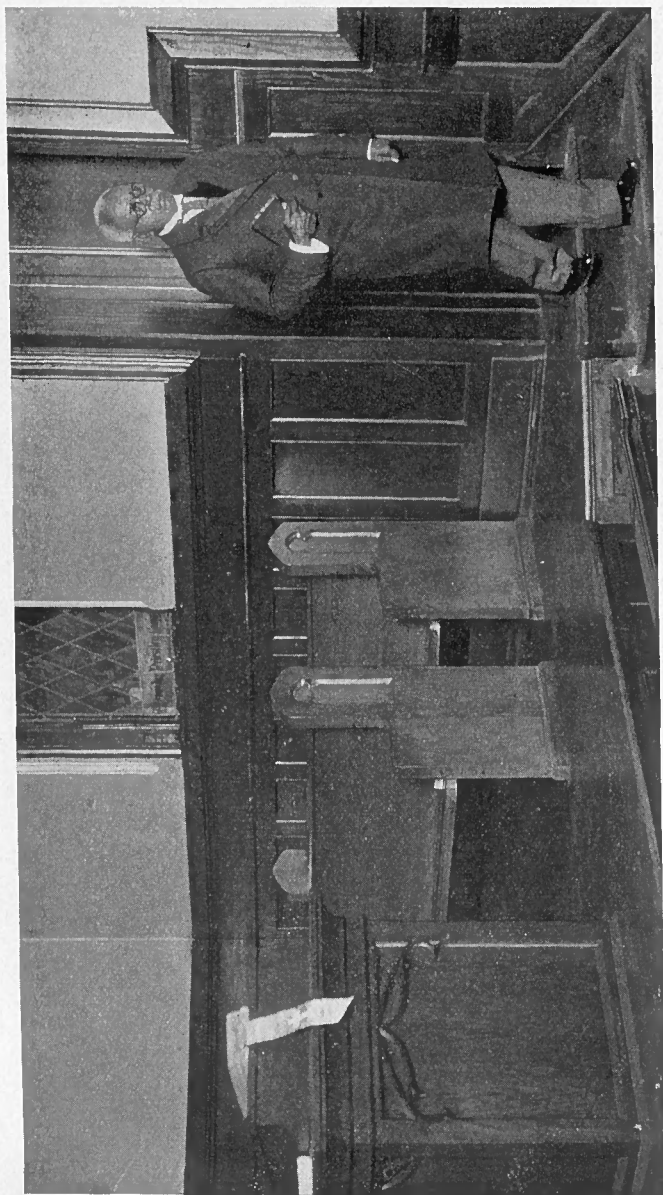
PROFESSOR FREDERICK D. HALL, A.B., Mus. B.
Instructor in Music

MISS FRANKIE V. ADAMS, A.B.
Extension Instructor in Social Work

MISS SARAH GINSBERG, A.B.
Extension Instructor in Social Work

MISS ERNESTINE MCGILL
Extension Instructor in Social Work

PROFESSOR DEMPSTER D. MARTIN
Director of the School of Missions and Secretary of the Stewart
Missionary Foundation for Africa



OVER 1500 MINISTERS VACATE THE PULPITS OF NEGRO CHURCHES ANNUALLY BY RETIREMENT AND DEATH. WHO WILL TAKE THEIR PLACES?

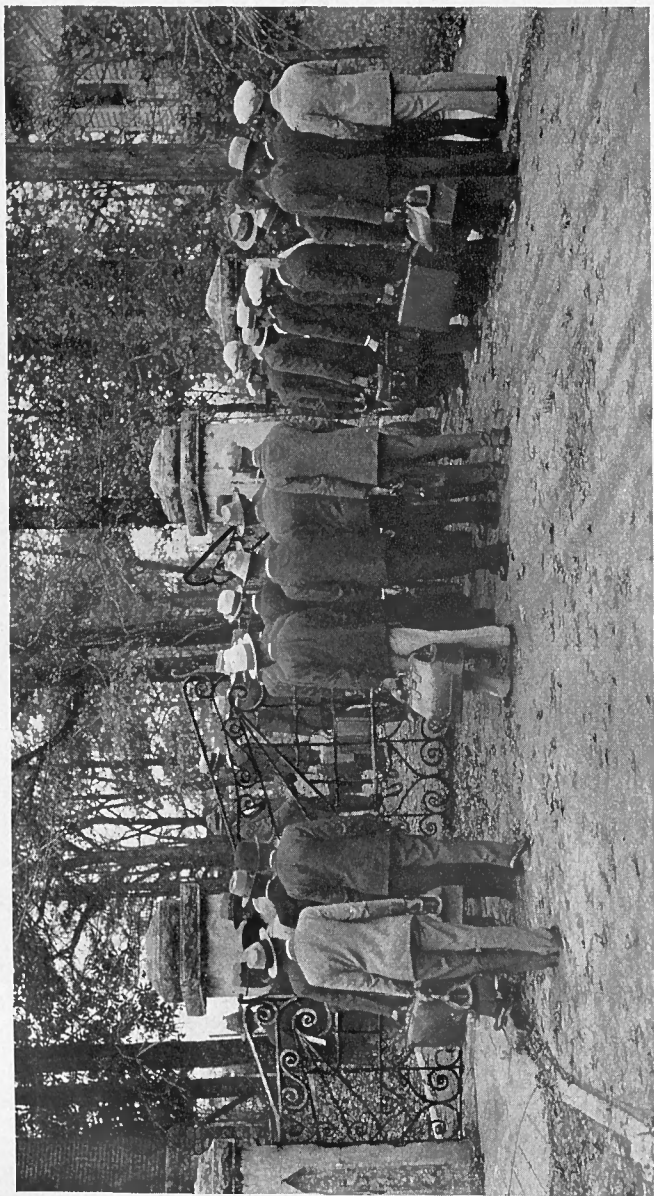
HISTORICAL STATEMENT

Gammon Theological Seminary was founded through the foresight of Bishop Henry White Warren and the Christian philanthropy of Mr. E. H. Gammon. The Bishop spent his first episcopal quadrennium in Atlanta and, with characteristic penetration, he quickly discerned that the greatest need of the Negro Race was a Theological Seminary to train their moral and religious leaders. The name of Mr. Gammon, of Batavia, Illinois, was suggested to Bishop Warren as one who was interested in the Negro Race and likely to see the great importance of the project he had in mind. The matter was presented to this keen layman in the Bishop's persuasive manner and after further conference and deliberation he made an initial gift of \$25,000.00 for the establishment of a Biblical Department in Clark University. The Bishop at the same time agreed to raise \$20,000.00 for the erection of a Theological Hall. The Rev. Wilbur P. Thirkield, then a young preacher from Cincinnati and now Bishop, was secured as the first teacher, and the work was actually begun in 1883.

Though the beginning was small, Mr. Gammon's interest increased as he saw the work develop and his gifts multiplied. Finally he established an independent Theological Seminary, well endowed for that day, and with a strong Faculty, adequate buildings, and an excellent curriculum. Professor Thirkield was made the first President.

The importance of the Institution may be inferred from the words of the Reverend Atticus G. Haygood, Bishop of the Methodist Episcopal Church, South, spoken in a public address at the opening of Gammon's fourth year: "It may be questioned whether any single Institution under the care of the Methodist Episcopal Church holds a place of responsibility equal to that which is possible to the Gammon School of Theology. . . . It may be questioned whether any single Institution in the Southern States could not better be spared."

The years have abundantly justified these words, for more than 1,700 students have entered the ministry after being train-



ENTERING GAMMON THEOLOGICAL SEMINARY.
WILL YOU BE IN THIS GROUP NEXT SEPTEMBER?

ed here. About half of these have taken the full courses required for the various Degrees and Diplomas. Among its Alumni are counted Bishops of the Methodist Episcopal Church and of the African Methodist Episcopal Church; Editors, Secretaries, District Superintendents, College Presidents, Professors in Colleges and Theological Seminaries, and leading Pastors in the various denominations of the Negro branch of the great Church of Christ. The sons of Gammon may be found in every Southern State, in not a few of the Northern States, and on the Mission Field. Everywhere they are devotedly and effectively doing the work of the Kingdom. The students have come from nearly every State in the Nation, and from Africa, South America, Panama, Cuba, and the British West Indies. They have come largely from the Methodist Episcopal Church, but also in goodly numbers from the Baptist, Congregationalist, Presbyterian, Protestant Episcopal, Wesleyan, Colored Methodist Episcopal, African Methodist Episcopal, African Methodist Episcopal Zion, and other denominations. Gammon today is the outstanding institution in the world for the training of the Negro ministry. Its Faculty and its courses are of the highest order. Its plans, already begun, for further development and enlargement will make the privileges at Gammon still more attractive to those who want the best preparation for the ministry.

LOCATION

The Seminary is located in Atlanta, Georgia, the leading city of the South on the great railroads between Washington and New Orleans. It is situated 1,050 feet above sea level and has one of the best all-year-round climates in the country. It is the natural capitol of a vast area that stretches from Virginia to Louisiana. As such it is strategic from the commercial, social, and religious points of view. It is a center for the education of Negroes, since no fewer than four Colleges are established there for that purpose. Besides there are in the City or immediate neighborhood at least five other Institutions of higher learning. The Churches of Atlanta, for both races, are strong and numerous, so that every type of modern church activity may be studied at first hand.

The beautiful campus, located at the terminus of Capitol Avenue, contains seventeen and one-half acres of fine rolling land. It is the highest point in the vicinity of the City, and is covered by a lovely grove of pines and oaks. Its beautiful magnolia drive has become a landmark. Electric cars of the South Pryor Line run to its gates and along its extensive frontage. Its main gateway opens into the head of Capitol Avenue, the dome of the State House being in full view. It would be difficult to find a more central, accessible, and beautiful site. Adjoining the campus of Gammon Theological Seminary, with only a road between them, is the large and fine property of Clark University. Thus we have on the campus of Gammon a place of quiet and beauty, near enough to the heart of a great city to feel its problems, yet sufficiently secluded to permit undistracted study and concentrated preparation for the great task of the ministry. To spend three years amidst these beautiful surroundings with their cultural quality is in itself both an educational and a religious process of high value.

THE PURPOSE OF GAMMON

The aim of the Seminary is to give to young people who seem to be called to the ministry and Christian service, an adequate preparation for the all-important task of religious leadership. This involves a working knowledge of the Old and New Testaments, a reasonable familiarity with the historic background of the Church, an appreciative understanding of the basic doctrines of the Christian faith, the acquirement of effectiveness in preaching Christian truth, and a masterful grasp of the problems of religious and moral leadership.

Above all, the supreme importance of the personal life is emphasized and the deeper experimental knowledge of Christ is encouraged. The ideal set before the students is not the mere acquirement of intellectual skill, but the achievement of a radiant Christian personality in sympathetic touch with the deepest needs of mankind.

THE RELIGIOUS LIFE OF THE SEMINARY

Since the Christian religion is preeminently Life, the Seminary seeks to cultivate the personal experience of God as the dominant fact in the consciousness of the student. The basic value of religious emotions is recognized and also the importance of associating all such emotions with their ethical implications.

Each class session is begun in the attitude of worship, and frequently with song and prayer. Every school day at 8:40 a Chapel Service is held and the entire Faculty and Student Body have the opportunity of joint public worship. Also on Tuesday evenings a devotional meeting is held and the students have the inspiration of a personal testimony service. The fervor and uplift of this gathering have been of untold benefit to the students through the years.

On Sunday morning a Church School is conducted jointly for students of Gammon Seminary and Clark University. The Adult Bible Class has attracted large numbers of both Gammon and Clark students and all classes are rendering valuable service.

Following the Church School hour, a formal worship service is held in Thirkiel Chapel. Music is furnished by a supplied choir under the direction of Professor Hall. Members of the faculty preach at this service and frequently eminent preachers from Atlanta and other cities occupy the pulpit. At regular intervals the sacrament of the Lord's Supper is administered. In a word, every opportunity and incentive is given the students to maintain an earnest and vigorous Christian experience. It is expected on the part of the individual student that he will be sufficiently interested in his own religious condition to make the most of these privileges and nurture his own spiritual life.

ANNUAL ORDINATION SERVICE

There is also an Annual Ordination service for students who are to be ordained Deacons or Elders during the school year. Upon presenting certificates of election to orders by their Annual Conferences, they are ordained by the resident Bishop of the area, who visits the school regularly to conduct such a service.



THE CHAPEL, THIRKIELD HALL

THE FACULTY

The supreme essential of a Theological Seminary, humanly speaking, is its Faculty, and Gammon has been eminently fortunate through the years in having teachers who were men of stalwart Christian character and high scholarly attainments. They have been men of intellectual virility, sincere reverence, profound faith, and transparent honesty. Clear and forceful as has been their teaching, the potency of their strong personality has been a still greater factor in the enrichment of the student life. As the Seminary develops from year to year, additional teachers are secured, and it is expected that one new professor will be added to the teaching force at the opening of the Seminary next September.

THE SABBATICAL YEAR

The Board of Trustees, having recognized the importance of allowing the Faculty time to keep well informed in their several departments, has adopted the policy of the Sabbatical Year. This means that once in seven years the head of each department will have the privilege of one or two semesters off for travel and study, and thus the teaching of the Seminary will be kept fresh and abreast of the times. Professor R. N. Brooks, head of the Department of Church History, has been granted the privilege of a year's advanced study and is spending the year 1932 at Oxford University, England. He plans to return in time to teach his classes beginning January, 1933.

THE SOCIAL LIFE

Special attention is given to the cultural advantages of well directed social life. A standing Committee has been elected to represent both faculty and students in arranging social events for next year. It is not the intention that social events will be limited to the initiative of this committee, but the various groups who plan social gatherings will clear through this committee and thus avoid conflict in dates. By the committee's direction a well balanced program will be arranged for the entire year and all members of the school body will be given attention.

THE GAMMON LADIES' CLUB

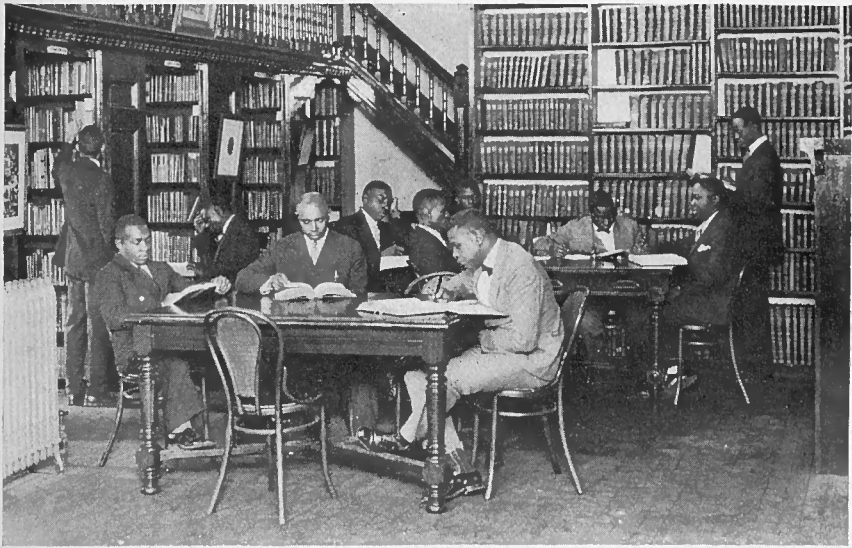
The Gammon Ladies' Club is composed of the wives of the Seminary students and other women who may be studying in the Seminary or in the School of Missions. The Club functions both as a Reading Circle and a Social Organization. It means much to the intellectual life of its members. The Seminary encourages the wives of married students to avail themselves of all these privileges and to enroll in such classes in either the Seminary or the School of Missions as they are prepared to take. The Club has inspired not a few young women to complete courses leading to the Seminary Diploma.

THE GAMMON FORUM

The Gammon Forum affords the students fine opportunities for literary culture. Its programs include orations, essays, debates, music and addresses delivered by invited speakers and special lectures given by the Professors. The frequent discussion of theological questions and debates upon the great moral, social, and political issues of the day are especially beneficial to ministers. The Forum also gives practical illustrations of the judicial and administrative procedure of the Church. The meetings of the Society are open to all the men of the student body.

FACULTY ADVISERS

Upon being enrolled in the Seminary, each student is assigned by the Registration Committee to one of the members of the Faculty who will act for that Semester as his special Adviser in regard to his studies and in other matters of both an academic and a personal nature. At the beginning of the Second Semester all students will be reassigned for the balance of the year. The value of this friendly counsel will depend largely upon the frank confidence which the student exercises toward his Adviser.



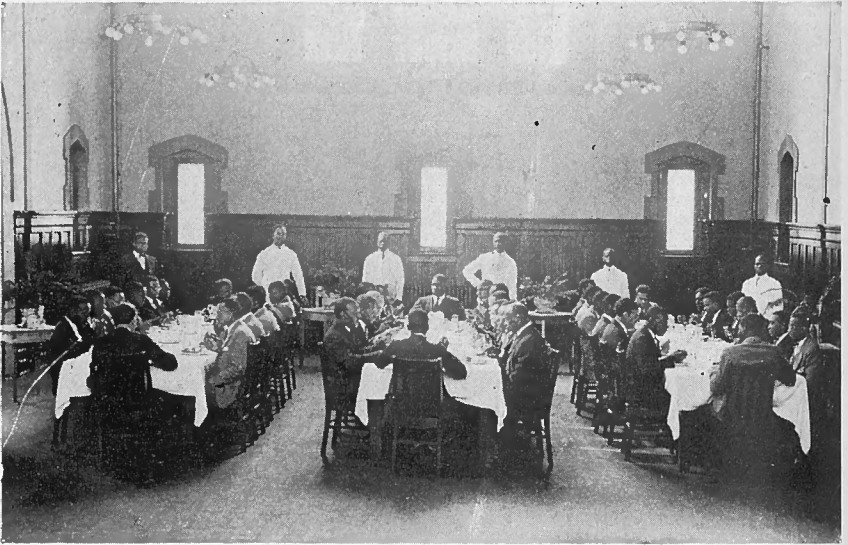
THE LIBRARY

Next to the Faculty, the Library of a Seminary is of signal importance, for here the student has access to the best thought of all the ages. At Gammon we have one of the finest Theological Libraries in the South. The number of volumes and pamphlets is in excess of 21,000 and the number is increasing each year. Many of the books are rare and of great value. In addition to the standard commentaries and reference books in the several departments there are special features of striking interest.

The collection relating to Negro slavery and emancipation in this country and in Africa contains many rare volumes. The literature of Foreign Missions, especially Missions in Africa, is abundant. One collection of seventy-five books deals with the language and educational problems in Africa and includes versions of the Bible, hymnals, and other books in native dialects.

SPECIAL LECTURES

Through the generous gifts of the Gammon Alumni and the able leadership of Bishop R. E. Jones, of the class of 1897, the Alumni Lectureship has become a boon to the Seminary. This foundation brings to the Seminary from year to year some distinguished speaker for a series of lectures on themes of varied interests. The lectures were omitted in 1931-1932, but will be given in 1932-1933.



FRIENDLY HOUR AT THE REFECTORY

PRIZES AND AWARDS

There are a few prizes offered each year. The Reverend Horace L. Jacobs, D.D., of Bellefonte, Pennsylvania, has for a number of years offered a cash prize of \$10.00 for the best essay on some aspect of Christology. This has proved a very valuable stimulus to research and has brought rewards to more than the prize winners. Because of the merit of the essays, a second prize was offered this year by one of the faculty. The

first prize in 1931 was awarded to Mr. DeWitt Sanford Dykes and the second prize to Mr. Cosum Mason Luster.

Awards are made for improvement of grounds about the cottages on the campus occupied by married students. The awards in 1931 were to Mr. and Mrs. J. T. Enwright and Mr. and Mrs. J. W. Keller.

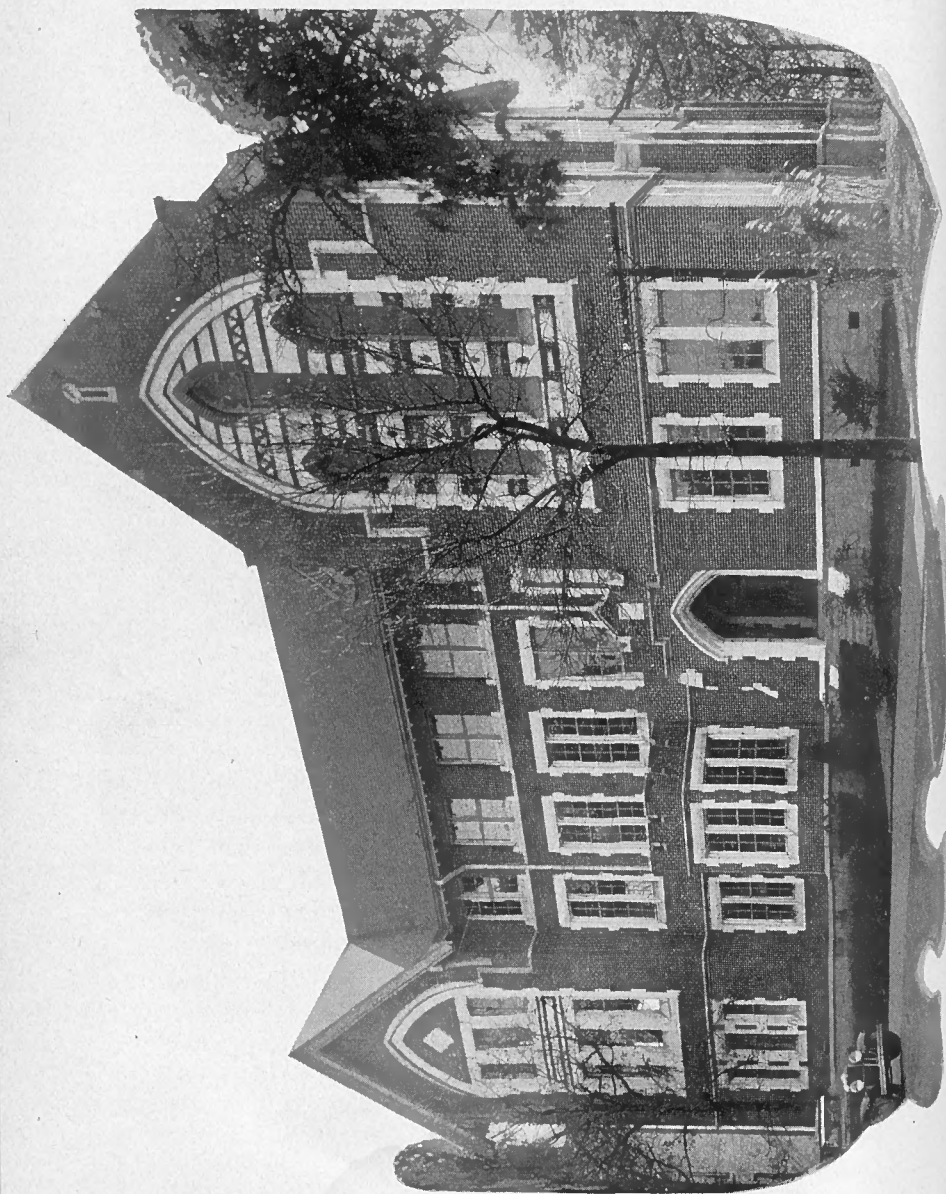
The Stewart Foundation prizes for oratory were awarded: In Degree Course, Mr. Jacob Wycliffe Keller, in Diploma Course, Mr. Egbert Dougan. The prizes in hymn writing were awarded: In the Degree Course, Mr. Giles R. Wright; in the Diploma Course, Mr. Thomas H. Wootten. The Willia Brown prize for scholarship and faithfulness in the School of Missions was awarded to Mrs. Bessie Watts Keller.

GRADUATE SCHOLARSHIP

A Graduate Scholarship was awarded to Mr. DeWitt Sanford Dykes which entitles him to a year's graduate study at Boston University School of Theology.

NON-SECTARIAN

Although Gammon Theological Seminary is maintained by the Methodist Episcopal Church, it is non-sectarian in its policy. Some of its Trustees and Professors are members of other denominations, and students of all Christian Churches are received on equal terms and accorded like privileges in the Seminary. The spirit of Christian Brotherhood is so genuine that all students have complete freedom in maintaining each his own denominational view-point, and, in turn, all are better prepared for interchurch cooperation later because of this sympathetic understanding in the Seminary. When the number of students from any one denomination is sufficient to warrant a class in the polity of that particular church, a lecturer from that denomination will be secured for the course of lectures on Church Polity.



THIRKIELD HALL,—ADMINISTRATION BUILDING

CREENTIALS

In order to be enrolled as a student in the Seminary the applicant is required to present to the Registrar, Professor J. L. Farmer, credentials attesting the Christian character and worthiness of the candidate to receive the training.

Students belonging to the Methodist Church are expected to present a Local Preacher's license or recommendation from the Quarterly Conference or Official Board of the church where their membership is held.

Students from other Denominations must have a written endorsement from the proper officials of their own church.

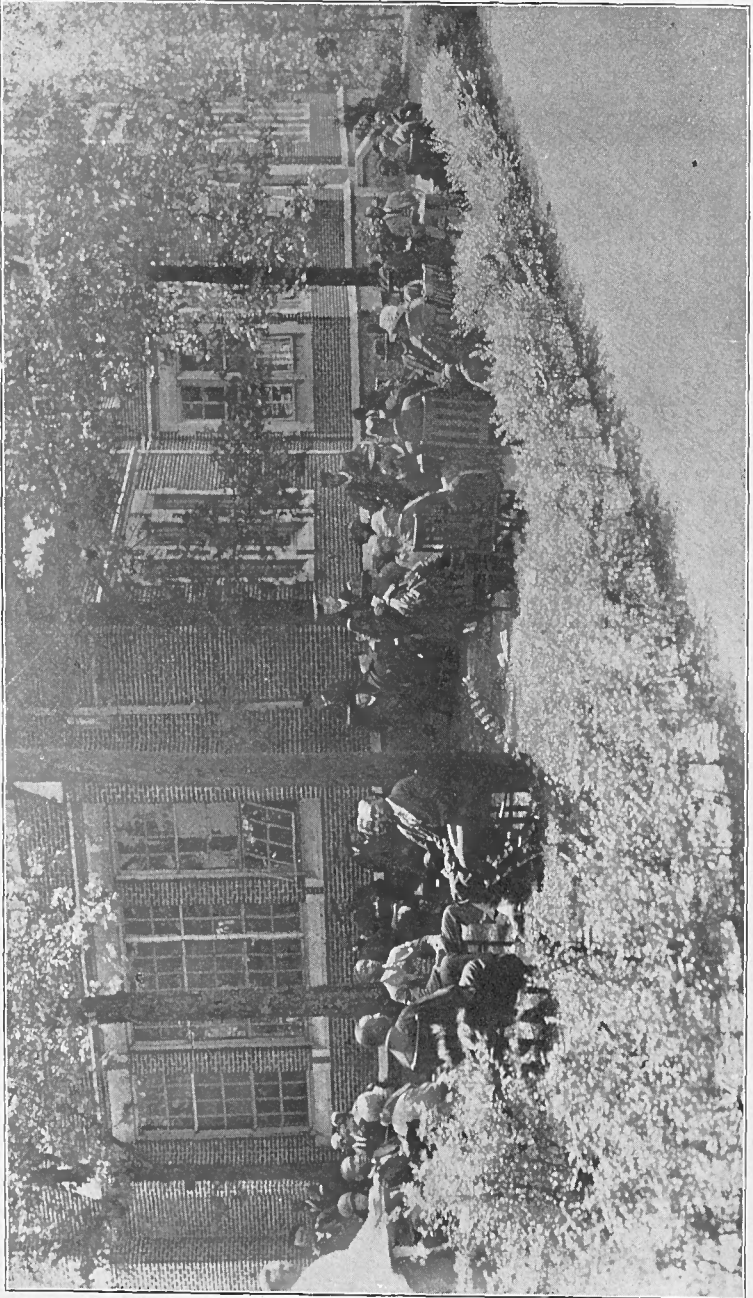
In addition to the written endorsement of character and church standing, applicants for the Diploma Course are required to present transcripts indicating the courses they have had in High School and the grades attained. Diplomas from College should be presented by those who apply for the Degree Course.

THE GRADUATE SCHOOL

The Seminary has now a thorough graduate school with classes exclusively for college graduates. The course requires three years of resident study and leads to the degree of Bachelor of Divinity. Since the establishment of the graduate school students who appreciate the value of more adequate preparation for the ministry are enrolling in increasing numbers. Last September more College graduates entered the Junior Class than formerly were listed in all three classes of the Seminary.

THE DIPLOMA COURSE

The Diploma Course is open to those who have been graduated from an accredited High School or have had the equivalent of that training. After three years in the prescribed Seminary Course and a total credit of ninety semester hours, the diploma of the Seminary is awarded.



A LAWN FETE

GRADUATION REQUIREMENTS

For graduation from the Seminary a total of ninety semester hours is required. Of these, eight hours must be in the Department of Old Testament, eight hours in the Department of New Testament, eight hours in the Department of Church History, nine hours in the Department of Systematic Theology, sixteen hours in the Department of Practical Theology, seven hours in the Department of Missions, and four hours in the Department of Religious Education.

A minimum also of eight hours of either Greek or Hebrew is required of Candidates for the Bachelor of Divinity Degree.

The minimum number of hours per week for a regular student is fifteen, and the maximum is eighteen.

SPECIAL STUDENTS

Students who do not desire to take the full three years course may be enrolled as Special Students upon approval by the Faculty and be admitted to such classes as they are prepared to take creditably.

WOMEN STUDENTS

Women who desire to prepare for various forms of Christian service are admitted on the same terms of scholarship as the men. The number of women to be admitted is limited to the dormitory accommodations in Thayer Home. Applications should be made as early as possible. Those desiring preparation for missionary or deaconess service should address the Secretary of the Stewart Missionary Foundation, Professor D. D. Martin.

CONDITIONED STUDENTS

Students for the ministry, who have been able to secure only the first two years of High School work, may be enrolled at Gammon Seminary as Conditioned Students. They must remain as Juniors in the Diploma Course until they have completed full High School work at Clark University.

THE ATLANTA SCHOOL OF SOCIAL WORK

Through a plan of broad cooperation the Atlanta School of Social Work will give three extension courses at the Seminary on various phases of Social Work. The subject is of highest importance to all students for the ministry and specialized Christian service. The courses given this year are listed and described under the Department of Practical Theology.

Students who are interested in professional social work may take the regular college courses in Social Science and courses in the theory of Social Case Work, Group Work, Community Organization and Social Research in the Atlanta School of Social Work. Upon graduation from the college they may enroll in the Atlanta School of Social Work and receive a diploma from that institution after one year of study, thereby shortening the usual two year course in Social Work to one year.

Detailed information with reference to the regular curriculum and description of courses may be secured from Mr. Forrester B. Washington, Director, Atlanta School of Social Work, 239 Auburn Avenue, Northeast, Atlanta, Ga.

THE STEWART MISSIONARY FOUNDATION FOR AFRICA

This Foundation, which has become a part of the work and life of Gammon Theological Seminary, was established by Rev. William Fletcher Stewart in 1894, its purpose being to develop intelligent interest among the colored people of the United States for the redemption of Africa. In addition to the work of the recitation room other educational means intended to reach all the schools of the Church were inaugurated. A definite publication was anticipated which has been realized in the school magazine called THE FOUNDATION, and annual prize con-

tests in orations and hymn writing have featured the work from the beginning.

It was Mr. Stewart's conviction that Gammon Theological Seminary possessed peculiar advantages for the execution of this movement, also a center to which could be attracted young men and women who would volunteer for missionary work in Africa.

In accepting the offer of Mr. Stewart the Trustees of Gammon Theological Seminary declared their approval of the general plan proposed and agreed to carry out the plan as far as practicable. Before his death the founder executed a deed of trust of certain properties, the proceeds from which should be given each year to the support of the Stewart Foundation in Gammon Theological Seminary.

To make the compact more secure and permanent, in 1924 the Stewart Foundation was incorporated under the laws of the State of Georgia as a definite part of the work of the Seminary to be carried on in harmony with the Seminary as a department thereof, also to maintain the School of Missions to more perfectly carry out the specific object of the Foundation under the approval of the Seminary Board of Trustees.

THE STEWART FOUNDATION SCHOOL OF MISSIONS

This school of missionary training was organized in 1914. It began with a high purpose to give special training to wives of students in Gammon who had limited preparation and were in need of further training to meet the demands of a pastor's wife; and especially to prepare them for leadership in the women's missionary societies throughout the churches. A further purpose being to train especially all volunteers for the foreign field and such students of both Clark University and Gammon Theological Seminary as might be led to devote their lives to any form of missionary service, home or foreign.

The results of this work have been marked in the leadership and usefulness of those graduating from the school. In connection with the Woman's Home Missionary Society's Home on the Clark campus, many young women have been led to take up the work of special training for social service, deaconess work, parish helpers, and a few have gone as missionaries to Africa.

All the classes in Gammon Seminary suited to the preparation of the candidates and the purpose of their study are open to students in the School of Missions who meet the educational requirements.

Young women who elect to study in the School of Missions are provided with room and board in Thayer Home, where also they may receive training in the domestic arts and sciences. Young men are cared for in the Seminary dormitory on the same terms and with the same privileges as other students of the Seminary. All work is so perfectly blended as to make this the most desirable school of training for the youth of the Negro group.

COURSES OF STUDY

All candidates for the Diploma Course in the School of Missions must have finished a standard high school or its equivalent and shall meet the same requirements in class standing as those in the Diploma Course in the Seminary.

Candidates having a degree from a college satisfactory to the faculty will be given advanced credit in the School of Missions over the under-graduate, or high school graduate. A three-year course of sixty semester hours being required of the first named, while but forty semester hours may be required of the degree student.

The required work in either of the above cases being a definite course both in the Old and New Testaments, Church His-

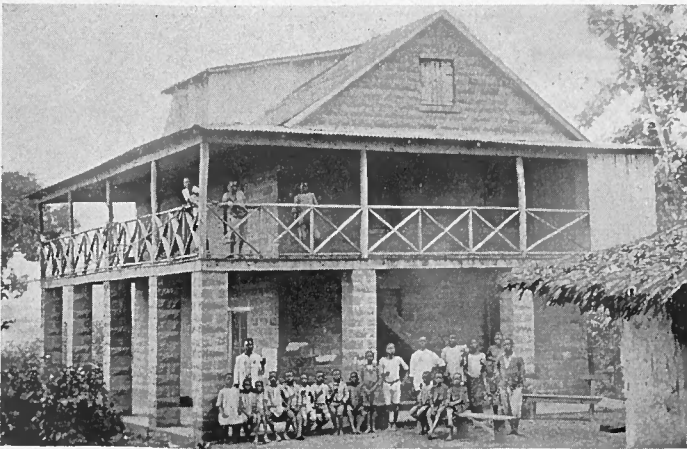
tory, Religious Education, Ethics and Sociology, and the various subjects in the Department of Christian Missions.

Credit will be given to women students for work pursued in the Thayer Home School, and those coming with only high school preparation will be required to take certain subjects in the college department of Clark University.

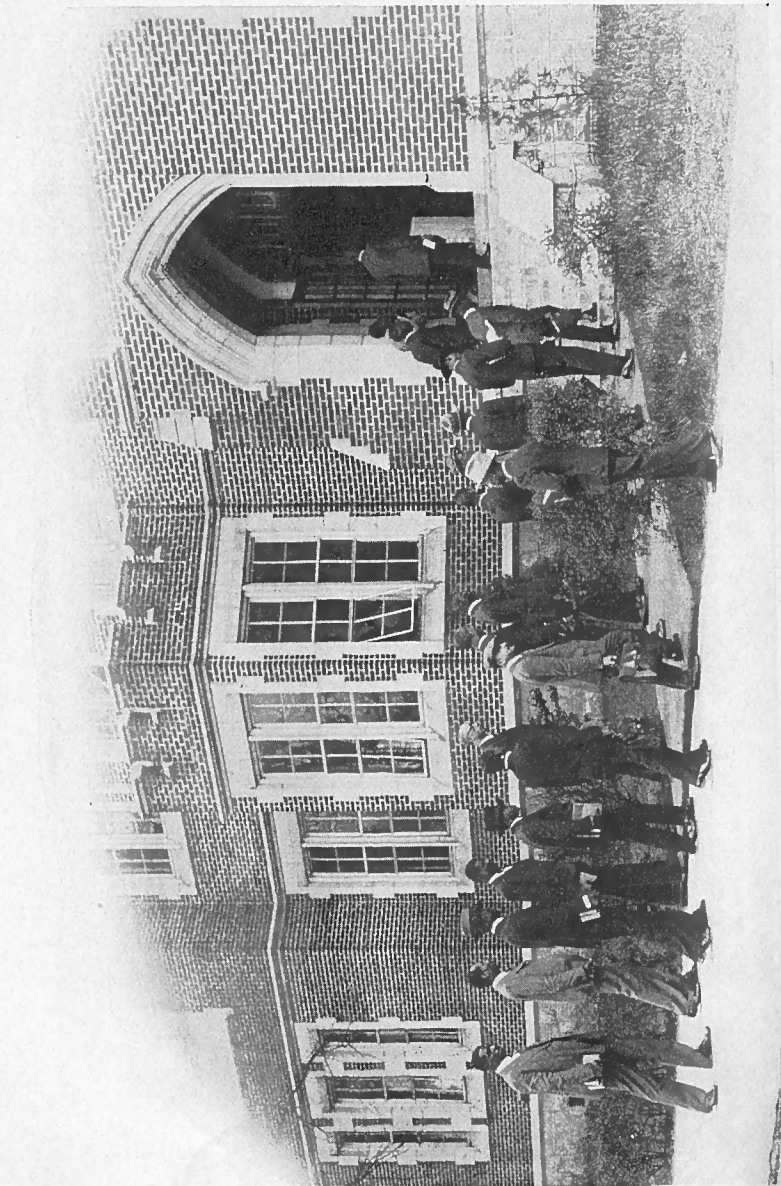
A definite outline of study will be provided for any student as soon as the faculty are acquainted with the life plan of that student and the grade of preparation with which that student enters upon the work.

The Atlanta School of Social Work maintains classes in theory and case work upon our school campus and all the classes of this school will be open to School of Mission students in so far as they are prepared to take the work.

A series of Health Lectures with technical training in first aid is provided through one semester of each school year.



JULIA A. STEWART MEMORIAL GIRLS' HOME
AND SCHOOL, GARRAWAY MISSION, LIBERIA



THE OPEN DOOR TO MINISTERIAL TRAINING

THE COURSES OF STUDY

BY DEPARTMENTS

Key—In designating the several courses the following method is used: C indicates that the course is for College Graduates; D indicates that the subject is for students in the Diploma Course. The first numeral signifies the department to which a course belongs; 1—The Old Testament; 2—The New Testament; 3—Church History; 4—Systematic Theology; 5—Practical Theology; 6—Christian Missions; 7—Religious Education. The other two figures designate the number of the course in a particular department, and when the final numeral is odd, the course is given in the First Semester, and when the final numeral is even, the course occurs in the Second Semester. The letter following the numerals indicates the class year for which the course is intended: J, Junior; M, Middler; S, Senior; A, All.

I. GRADUATE COURSES.

DEPARTMENT OF OLD TESTAMENT

(Eight semester hours required in this department for graduation)
Professor Farmer.

C 111 J—Introduction to the Old Testament. A critical study of the literature of the Old Testament with reference to the origin, date, authorship and content of the several books. Required of Juniors. Two hours a week, **First Semester.**

C 112 J—Old Testament History. A general survey of the historical development of the Hebrew people from the earliest times to the Christian Era. Required of Juniors. Three hours a week, **Second Semester.**

C 113 M—Hebrew Prophecy of the Early Period. An intensive study of the great prophets of Israel through the period of the Exile. Required of Middlers. Three hours a week, **First Semester.**

C 114 M—Hebrew Prophecy of the Later Period. A study of post-exilic prophecy and the religious developments connected with it. Elective to Middlers. Two hours a week, **Second Semester.**

C 117-118 A—Elementary Hebrew. Elective to students in any year. To be arranged for in consultation with the Professor. Three hours a week throughout the year.

C 115 S—Religious Teaching of the Old Testament. A systematic study of the teaching of the Old Testament relative to the topics God, Man, Sin, Forgiveness, Suffering, etc. Elective to seniors. Three hours a week, **First Semester.**

C 116 S—The Messianic Hope. A lecture course dealing with the origin, and the development of the Messianic Hope in Israel through the New Testament period. Special attention given to such topics as the Future Life, the Resurrection, Heaven, Hell, and the Personal Messiah. Elective to seniors. Two hours a week, **Second Semester.**

C 119 A—Hebrew Seminar in Genesis and Psalms. Elective to members of any class who have had introductory Hebrew. Offered in alternate years if a sufficient number elect. Two hours a week, **First Semester.**

C 120 A—Hebrew Seminar in Amos. Elective to students who have taken C 117 A. Two hours a week, **Second Semester.**

DEPARTMENT OF NEW TESTAMENT

(Eight semester hours required in this department for graduation)
Professor Bell, Assistant Professor Paul.

The student entering as a candidate for the Bachelor of Divinity degree is required to have a working knowledge of Greek. Provision is made in the Diploma School for the study of the essentials of New Testament Greek Grammar by students beginning work in the Graduate School who did not take Greek in College.

Greek Exegesis

C 211 M—Greek Exegesis I—The Gospel According to Luke. The Greek text of the Gospel is translated and studied with a view to mastering points of Grammar and Syntax and attention is given particularly to matters of interpretation based upon its linguistic and grammatical peculiarities. Required of Middlers. Two hours a week, **First Semester.**

C 212 M—Greek Exegesis II—The Pauline Epistles. Rapid reading of the Greek text of the Epistles with brief critical notes and homiletic interpretations. Required of Middlers. Two hours a week, **Second Semester.**

C 213 M—Greek Exegesis III—The Gospel According to Mark. The Greek text of the Gospel is studied with special reference to points of syntactic interest and homiletic interpretation. Elective to Middlers. One hour a week, First Semester.

C 214 M—Greek Exegesis IV—The Book of Revelation. An exegetical and critical study based upon the Greek text and in the light of the whole body of apocalyptic literature. Elective to Middlers. One hour a week, Second Semester.

C 215 S—Greek Exegesis V—New Testament Syntax and Grammar. An advanced, comparative, and more detailed course in the study of the distinctive qualities of New Testament Syntax and Grammar. Elective to Seniors. One hour a week, First Semester.

English Exegesis

C 217 J—Christ in the Gospels. A study of the life of our Lord as disclosed in the four Gospels. Attention is directed to such questions as the Synoptics, Miracles, Parables, and General Teachings of Jesus. The student is introduced to the literature upon the subject and the method is chiefly one of research and discussion. Required of Juniors. Two hours a week, First Semester.

C 218 J—Paul and His Epistles. A study of the life of the great Apostle to the Gentiles with particular attention to his part in freeing the early Church from the yoke of Jewish legalism. A general introductory study of his Epistles is also made. Required of Juniors. Two hours a week, Second Semester.

C 219 MS—English Exegesis I—The Miracles of Jesus. The class undertakes a careful investigation of the sources in each account of the miracles of our Lord and interest is focused upon critical and homiletic interpretation. Elective to Middlers and Seniors. Number of hours (one or two) to be determined. First Semester.

C 220 MS—English Exegesis II—The Teaching of Jesus. The parables and other sayings of Jesus recorded in the Four Gospels are studied inductively. A card index system is employed and towards the end of the course the student makes a topical summary and exegesis. The student's research is complemented by occasional lectures from the chair. Elective to Middlers and Seniors. Number of hours (one or two) to be determined. Second Semester.

C 221 MS—English Exegesis III—Hebrews and the Catholic Epistles. Problems of Introduction bearing upon these portions are carefully studied and the student is required to pass in his notebook monthly embracing both critical and homiletic exegesis. Elective to Middlers and Seniors. One hour a week, First Semester.

C 222 MS—English Exegesis IV—The Lord's Prayer and The Holy Spirit. A close study of our Lord's appropriate model for all Christian prayer, and of the office and work of the Holy Spirit as set forth in the literature of the New Testament. Elective to Middlers and Seniors. One hour a week, Second Semester.

DEPARTMENT OF CHURCH HISTORY

(Eight semester hours required in this department for graduation)
Professor Brooks.

C 302 J—General Church History. This course makes possible a careful study of the outstanding happenings in the development of the church. It attempts to acquaint the student with the general movements of Christian history from its beginning to the present time. Basic requirement for Juniors. Three hours a week, Second Semester.

C 304 M—History of American Christianity. This course aims to show the rise and development of Christianity under conditions peculiar to our American life. It sets forth the significance of religion in the founding of the colonies; the rise of denominational organizations, and points out the European background of American Christianity. Elective to Middlers. Three hours a week, Second Semester.

C 306 S—The Religious Revivals of the Eighteenth Century. The course will deal with the great evangelistic efforts of that century. It will study the antecedent elements and trace the effects and evaluate the results. Elective to Seniors. Three hours a week, Second Semester.

C 312 S—The Preaching Value of Christian History. This course sets forth the expansion of Christianity through the ages, the development of Christian institutions and the growth of Christian ideas and ideals, with special reference to the use which the preacher may make of these elements. Elective to Seniors. Three hours a week, Second Semester.

DEPARTMENT OF SYSTEMATIC THEOLOGY

(Nine semester hours required in this department for graduation)
Professor Van Pelt.

C 411 J—Introduction to Philosophy. The course is designed to supply an important part of the necessary background for the successful study of Theology. It is planned with a view to bringing the student to a clear conception of the nature and task of Philosophy and to guide him in an historical, critical, and constructive inquiry into its most important and persistent problems. The bearing of Philosophy upon the Christian faith receives special attention. Required of those Juniors who have not credit for a similar course pursued in college. Two hours a week, **First Semester.**

C 412 J—The Nature and Validity of the Christian Religion. The nature of religion in general and the peculiarity of the Christian religion; the nature and means of revelation; the grounds of the Christian certainty. Elective to Juniors. Three hours a week, **Second Semester.**

C 413 M—Systematic Theology I. The Christian conception of God in his relation to nature and to man; sin and the need of man. Required of Middlers. Three hours a week, **First Semester.**

C 414 M—Systematic Theology II. This course (a continuation of C 413 M) treats of the Christian doctrine of redemption in the most comprehensive sense of the term: the person and work of Christ; the work of the Holy Spirit; the Church and the Means of Grace; the Christian Hope. Required of Middlers. Three hours a week, **Second Semester.**

C 416 S—Christian Doctrine in the Poets. This course aims to help the student to a reasonable familiarity with the religious and philosophical teachings of some of the great English Poets of the Nineteenth Century. Elective to Seniors or Middlers. Two hours a week, **Second Semester.** President Clapp.

C 417 S—Modern Problems of the Christian Faith. This course deals with live questions in the field of Apologetics, Dogmatics and Christian Ethics. The particular problems chosen for treatment will vary in different years as the changing currents of religious thought may suggest. Among the topics that may receive special attention are the following: The Bible question; the finality of Christ; the bearing of evolutionistic science and philosophy upon the Christian faith; the reunion of the Churches; prayer; and other like topics. Elective to Seniors. Three hours a week, **First Semester.**

C 418 S—Christian Ethics. The course aims at a clear apprehension of the ethical implications of the Christian faith. The principle of faith in Christ is set forth as the condition and essential means of the progressive realization of the divine ideal in the individual and in society. Special attention is given to the application of Christian principles to the concrete problems of our day. Elective to Seniors. Three hours a week, **Second Semester.**

DEPARTMENT OF PRACTICAL THEOLOGY

(Twenty-two semester hours required in this department for graduation)

President Clapp, Professors Bell, Ginsberg, McGill, Adams, Hall

C 519 A—Gospel Singing I. A course aiming to prepare the individual singer for leadership in the singing of gospel and evangelistic songs. Elective to all classes. One hour a week, **First Semester.**
Professor Hall.

C 520 J—Effective Public Speaking. A study of voice culture with practice in principles and methods of correct and forceful public speech. Required of Juniors. Two hours a week, **Second Semester.**

C 521 J—Social Research I—Elementary Social Statistics. An introductory course in methods of collecting, classifying, interpreting and presenting social statistical data with particular reference to poverty, crime, mental defects, disease, unemployment and other social problems. Required of Juniors. Two hours a week, **First Semester.**
Miss Ginsberg.

C 522 J—Social Research II—Advanced Social Statistics. Methods of statistical analysis continued, including the use of index numbers and time series, measures of variability, measures of error, and the application of these principles of statistical analysis to problems of social research. A study of the fields of population and vital statistics. Required of Juniors. Two hours a week, **Second Semester.**
Miss Ginsberg.

C 523 M—Homiletical Theory. The basic principles of sermon building. The chief aims and objectives in sermonizing and the best methods of attaining these aims. Required of Middlers. Two hours a week, **First Semester.**

C 524 M—Public Speech in Theory and Practice. A study of the basic methods of correct public address with the opportunity of testing the methods in class exercises. Required of Middlers. Two hours a week, **Second Semester.**

C 525 MS—The Pastoral Office in Theory and Practice. The design of this course is to make clear to the student the nature and scope of the work of the Christian pastor today and to guide him to a practical understanding of how to organize the church for its various tasks and to supervise it in their accomplishment. The manifold and complex problems of modern church life will be systematically discussed and practical field work will be assigned and supervised by the professor. Required of Middlers and Seniors. Three hours a week, **First Semester.**

C 526 MS—The Pastoral Office in Theory and Practice. A continuation of C 525 MS. Three hours a week, **Second Semester.**

C 527 M—Community Work I. A study of the life and organization of urban and rural communities and social theories that underlie the modern community movement. Case records of efforts to solve community problems are studied; steps in the process of organizing these communities are analyzed in order to determine the principles underlying the technique of community organization. The importance of community work as a prevention of social ills is emphasized. Required of Middlers. Two hours a week, **First Semester.**

Miss Adams.

C 528 M—Community Work II. A continuation of Community Work I with emphasis upon special community problems and relationships. Organization and problems of Councils of Social agencies and Community Chest. National social agencies; their functions and relations to local agencies. Required of Middlers. Two hours a week, **Second Semester.**

Miss Adams.

C 529 S—Social Case Work I—Principles of Case Work. An introductory course dealing with the theory and some of the fundamental principles applicable to all forms of case work. Includes a brief history of the development and a survey of the present field of case work. Through the medium of case records, the task of the case worker as carried on in different types of agencies dealing with families and individuals is discussed. Elective to Seniors. Two hours a week, **First Semester.**

Miss McGill.

C 530 S—Social Case Work II—The Method of Social Case Work. The processes and techniques of case work such as observation, interviewing, analysis, planning, treatment and interpretation are discussed in relation to material drawn from case records, human relations as found in literature and from the students actual work in the field. Elective to Seniors. Two hours a week, **Second Semester.**

Miss McGill.

C 532 M—Hymnology and Public Worship. This course is based upon the recognition of the immense significance of hymnody and the spirit and organization of public worship for the life of the Church and of the individual Christian. The hymnody of the Church is studied historically and the characteristics of the hymns of the different periods and the great spiritual movements of the Church are noted. The tunes also are studied according to their periods and schools of church composition. In addition to hymnody, the course covers the whole question of public worship. The aim is to help the student to clear understanding of the broad fundamental spiritual principle that underlies true Christian public worship, and then to develop sound judgment in the application of that principle. Required of Seniors and Middlers. Two hours a week, **Second Semester.** Given in alternate years. Not offered in 1932-3.

Professor Van Pelt.

C 533 S—Homiletical Treatment of Selected Scripture. Instead of the homiletical praxis in the form of original sermon outlines of finished sermons, this course offers two features: (1) the inquiry into the question of the best homiletical approach to a number of selected passages; (2) critical reports or analyses of representative sermons by eminent preachers. Of these two parts, the first is offered by the instructor, the second is supplied by the students. Elective to Seniors. Two hours a week, **First Semester.**

DEPARTMENT OF CHRISTIAN MISSIONS

(Seven semester hours required in this department, including the study of Religions)

Professor Martin.

C 612 J—Christianity Among the Nations of the World. A study in missionary problems. How the missionary enterprise is meeting a rapidly changing world. An up-to-date survey of conditions and methods. A careful study of criticisms, and a restatement of the missionary obligation. Required of Juniors. Two hours a week. **Second Semester.**

C 614 M—**Religions of the World.** A study of the History and Philosophy of the leading religions of the world. A comparative study of the idea of God, the doctrine of Sin, Salvation, and the Future Life. Required of Middlers. Two hours a week, **Second Semester.**

C 619 M—**Race Relations in America and its Relation to World Redemption.** Including also a study of the racial history of Africa and the present racial situation on that continent. A careful study of the various elements entering into the race question in America, with present trend of interracial relations in the Southern States of America, the more complex situation in the Northern cities, and the effect upon church and state in this and other lands. Elective to Middlers. Two hours a week, **First Semester.**

C 620 S—**Missionary Interpretation.** A study of the Biblical teachings concerning the missionary enterprise, both in the Old and New Testaments. Required of Seniors. One hour a week, **Second Semester.**

625 S—**A Survey of Home Missions.** An outline course in the field of Home Missions, with plans and suggestions for a missionary educational program in the local church. Elective to Seniors. Two hours a week, **First Semester.** Given in alternate years. Not offered in 1931-32.

DEPARTMENT OF RELIGIOUS EDUCATION

(Four semester hours required in this department for graduation)
Professors Brooks, Farmer, Martin.

C 713 J—**History of Religious Education.** A survey of the history of Religious Education in this country from the beginning of the Republic to the present time, with special reference to the Sunday (Church) School. Elective for Juniors. Two hours a week, **First Semester.**

C 714 J—**Principles and Methods in Teaching Religion.** A survey of the development of the curriculum of religious education, with lectures on the selection and use of available material. Elective to Juniors. Two hours a week, **Second Semester.**

II. DIPLOMA COURSES.

DEPARTMENT OF OLD TESTAMENT

(Eight hours required in this department for graduation)

Professor Farmer.

D 121 J I—Introduction to Biblical Literature. This course introduces the student to certain fundamental problems connected with the study of the Bible, such as the origin, date, authorship, purpose and religious values of the various Books. A study is also given to the history of the Bible, and to the scientific method of Bible study. Required of Juniors. Two hours a week, **First Semester.**

D 122 J II—Introduction to Biblical Literature. A continuation of D 121 J I. Two hours a week, **Second Semester.**

D 123 M—Old Testament History. This course surveys the social, political and religious development of the Hebrews from Abraham to Christ. Attempt will be made to relate the Books of the Old Testament to the general history of the period in which each originated. Elective to Middlers. Two hours a week, **First Semester.**

D 124 M—Old Testament History. A continuation of D 123 M. Two hours a week, **Second Semester.**

D 127 M—Old Testament Prophets. This course surveys the prophetic movement in Israel, and includes an exegesis of the religiously more significant parts of the Books of Amos, Hosea, Isaiah, Jeremiah and Ezekiel. Elective to Middlers. Two hours a week, **First Semester.**

D 128 M—Old Testament Prophets. A continuation of D 127 M. Two hours a week, **Second Semester.**

D 129-130 A—Elementary Hebrew. The same as C 117-118 A. Elective to all students who wish a sufficient knowledge of Hebrew to be able to use a Concordance intelligently. Three hours a week throughout the year.

DEPARTMENT OF NEW TESTAMENT

(Eight hours required in this department for graduation)

Professor Bell and Assistant Professor Paul.

New Testament Greek

D 223 J—Greek I—New Testament Greek. The elements of New Testament Greek Grammar and Syntax are studied inductively. Seven

chapters of St. John's Gospel are read and the student is thoroughly drilled in points of grammar and vocabulary. Elective to Juniors. Three hours a week, **First Semester.**

D 224 J—Greek II—New Testament Greek. This course is a continuation of Greek I and a completion of the translation of the Gospel according to John. Finer points of grammar and syntax are noted and the drill in vocabulary continued. Elective to those who have had D 223 J. Three hours a week, **Second Semester.**

English Exegesis

D 225 J—New Testament Backgrounds and Beginnings. The Christian movement is studied from its earliest rootings in Hebrew history through the Inter-Testamental period to the close of the ministry of our Lord. Towards the close of the semester the student is acquainted with questions of Introduction bearing upon the Synoptics and the Fourth Gospel and with the general literature in the field. Required of Juniors. Three hours a week, **First Semester.**

D 226 J—Harmony of the Gospels. A comparative investigation of the Four Gospels with assigned collateral reading. Four carefully prepared papers are required and notes upon the assignments are handed in weekly. Required of Juniors. Three hours a week, **Second Semester.**

D 227 M—Early Christian Environment and Epistles. The Christian movement is studied from the Resurrection of Jesus to the close of the first Christian century. The student observes the unfolding of the Church from a mere Jewish sect into the world force that it came to be, and becomes familiar with questions of Introduction bearing upon the Book of Acts and the Epistles. Required of Middlers. Two hours a week, **First Semester.**

D 228 M—The Fourth Gospel. An introductory, analytical and exegetical study of this Gospel, and a comparison of it with the three Synoptics. The student is familiarized with the literature bearing upon the Book, and occasional lectures partaking of the nature of homiletic expositions are given. Required of Middlers. Two hours a week, **Second Semester.**

D 229 S—The Sermon on the Mount. A lecture course based upon the Matthew account with comparisons. As far as possible the teachings are traced to pre-Christian sources, and emphasis is laid upon present day applications and values. Elective to Seniors. One hour a week, **First Semester.**

D 230 S—The Gospel According to Matthew. A detailed critical and exegetical study of the Gospel with particular emphasis upon

its peculiarities viewed in the light of the other Synoptics. Stress is also laid upon its preaching values. Elective to Seniors. Two hours a week, **Second Semester.**

DEPARTMENT OF CHURCH HISTORY

(Eight semester hours required in this department for graduation)
Professor Brooks.

D 310 J—General Church History. In making a survey of the outstanding happenings in the life of the church from its beginning to opening of the World War 1914, this course endeavors to make the map of Christian history the permanent possession of every student. Basic requirement for Juniors. Three hours a week. **Second Semester.**

D 312 JM—Backgrounds for American Christianity. This course deals primarily with the European interest in American colonization and attempts to show how religion has influenced our American history and has in turn been influenced by that history. This course is a prerequisite for the course in American Christianity. Elective to Juniors and Middlers. Three hours a week, **Second Semester.**

D 314 M—American Church History. This course aims to show the development of Christianity under conditions peculiar to our American life and stresses the denominations which have contributed in any large way to the religious life of our nation. Elective to Middlers. Three hours a week, **Second Semester.**

D 316 S—The Religious Revivals of the Eighteenth Century. The course will deal with the great evangelistic efforts of that century. It will study the antecedent elements and trace the effects and evaluate the results. Elective to Seniors. Three hours a week, **Second Semester.**

DEPARTMENT OF SYSTEMATIC THEOLOGY

(Nine hours required in this department for graduation)
Professor Van Pelt.

D 420 J—Apologetics. The course is designed to guide the student to a penetrating examination of the nature and grounds of the Christian certainty. Among the chief topics of inquiry are: The grounds of theistic belief; the nature and means of divine revelation; the Bible in its relation to the revelation and to faith; the bearing of historical criticism upon faith; the faith in its relation to natural science; the relation of Christianity to other religions. Required of Juniors. Two hours a week, **Second Semester.**

D 421 M—Christian Doctrine I. This course presupposes the course in Apologetics (D 420 J). It treats of the Christian doctrine of God, creation, man, and sin. Required of Middlers. Three hours a week, **First Semester.**

D 422 M—Christian Doctrine II. This is a continuation of course D 421 M. It treats of the person and work of Christ, the work and nature of the Holy Spirit, the Church and Sacraments, and the Christian Hope. Required of Middlers. Three hours a week, **Second Semester.**

D 423 S—Christian Ethics. The course treats of the Christian life as the active expression of the Christian faith. Not only the fundamental general principles are set forth, but also the application of these principles to the concrete problems of the day is discussed. Elective to Seniors. Three hours a week, **First Semester.**

D 424 S—Problems of Faith and Practice. This course undertakes the discussion of specially urgent problems in Christian doctrine and life. The choice of topics will vary from year to year, but the following themes are among those that will be reckoned with: the Bible question; the absoluteness of Christianity; the meaning of faith; the meaning of prayer; the relation of evolutionary theory to the faith; and other like topics. Elective to Seniors. Three hours a week, **Second Semester.**

DEPARTMENT OF PRACTICAL THEOLOGY

(Sixteen hours required in this department for graduation)

President Clapp, Professors Bell, Hall.

D 511 M—Preaching in Theory and Practice. The art of preaching and the place of preaching in the life of the Church. The basic principles of sermon building and effective delivery. Required of Middlers. Two hours a week, **First Semester.**

D 512 M—The Art of Public Speaking. The purpose of this course is to develop skill in public speaking. Emphasis is placed upon the proper use and control of the voice, and the expressive coordination of the entire person. Elective for Middlers. Two hours a week, **Second Semester.**

D 514 M—The Psychology of Public Speaking. An analysis of the methods of persuasive public speaking; the various attitudes of audiences; methods of holding attention and securing action. Elective for Seniors. Two hours a week, **Second Semester.** Given in alternate years. Not offered in 1932-33.

D 516 M—Hymnology and Public Worship. This course is based

upon the recognition of the immense significance of hymnody and the spirit and organization of public worship for the life of the Church and of the individual Christian. The hymnody of the Church is studied historically and the characteristics of the hymns of the different periods and the great spiritual movements of the Church are noted. The tunes also are studied according to their periods and schools of church composition. Required of Seniors and Middlers. Two hours a week, Second Semester. Given in alternate years. Not offered in 1932-33. Professor Van Pelt.

D 517 J—Sight Singing and Voice Building I. This course deals with the rudiments of music and with note reading in all the keys. Vocal analysis with attention to the placement and development of the singing voice will be studied also. Required of Juniors; elective to others. One hour a week, First Semester.

D 535 S—The Making and Delivery of Sermons. This course directs the selection, analysis, and development of texts; supervises the writing of sermons; and gives opportunity for the public delivery of sermons with constructive criticism and personal suggestions as to the spirit, form, content, and delivery. Required of Seniors. Two hours a week, First Semester.

DEPARTMENT OF CHRISTIAN MISSIONS

(Seven semester hours required in this department, including Comparative Religions)

Professor Martin.

D 620 S—Missionary Interpretation. A study of the Biblical teaching concerning the missionary enterprise, both in the Old and New Testaments. Required of Seniors. One hour a week, Second Semester.

D 621 M—History of Missions. The course begins with Christ and His Apostles and comes to the development of Modern Missions, with a survey of mission fields and a study of the present day trend in foreign mission work in every land, including the home base and home mission fields. Elective to Middlers. Two hours a week, First Semester.

D 623 J—Introduction to Christian Missions, Including Missionary Pedagogy. A comprehensive survey of the missionary enterprise. A study of the method and motive in the promotion of Christian Missions, including the method in conduct of mission study classes and the adaptation of methods to all ages in the Bible School. Required of Juniors. Two hours a week, First Semester.

D 625 S—**A Survey of Home Missions.** An outline course in the field of Home Missions, with plans and suggestions for a missionary education program in the local church. Elective to Seniors. Two hours a week, **First Semester.**

D 626 M—**Comparative Religion.** An introduction to comparative religion. A study of man's search after God. A survey of the history of the leading religions of the world, and their present day strength and influence upon the religious thought and morals of humanity. Required of Middlers. Three hours a week, **Second Semester.**

D 627 M—**Race Relations.** A study of interracial questions vital to American life, together with a survey of the African background of the American Negro. Elective to Middlers. One hour a week, **First Semester.**

D 628 J—**The Study of Africa.** Its history, people, present condition and need. A survey of its mission fields with special emphasis placed on study of Liberia. Elective to Juniors. Two hours a week, **Second Semester.**

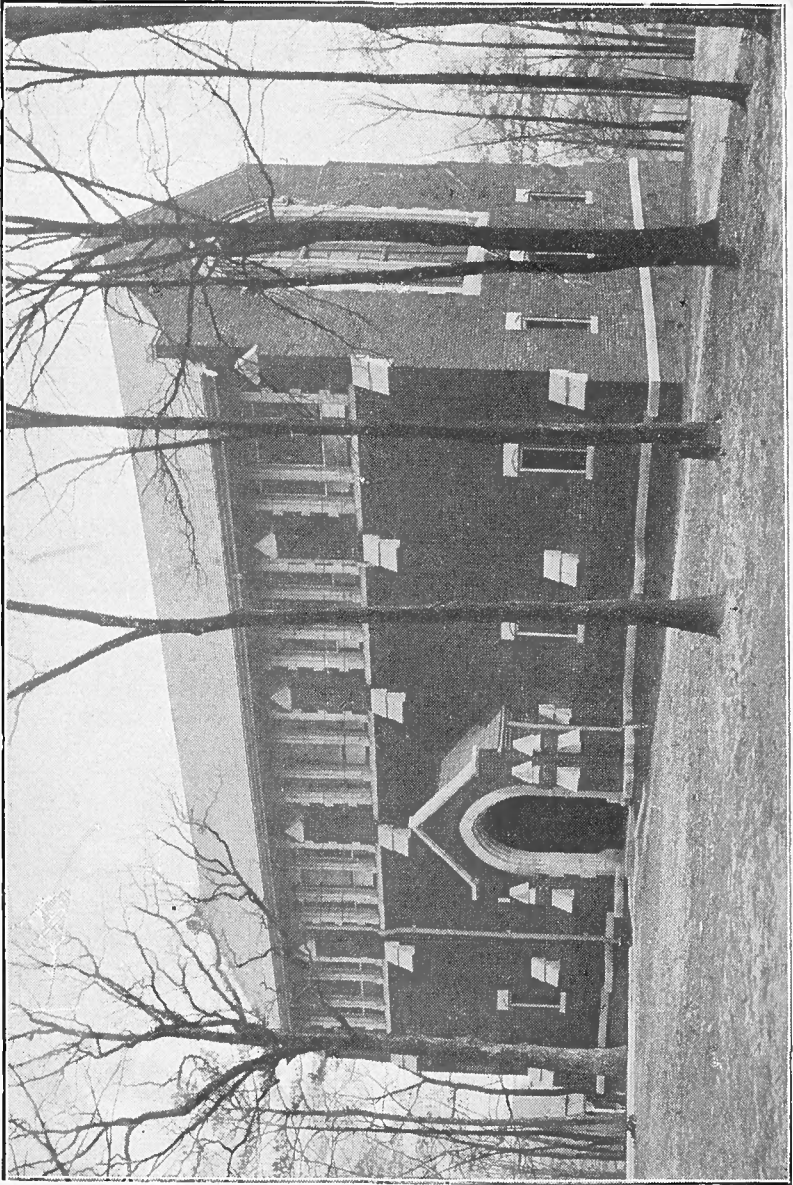
DEPARTMENT OF RELIGIOUS EDUCATION

(Four semester hours required in this department for graduation)
Professors Brooks, Farmer, Martin.

D 716 J—**Organization and Administration of the Church School.** A study of the Modern Church School program with a view to the use of the Graded Lessons and Literature in all the departments. In addition to the work of the class-room, surveys of nearby school communities are made and programs for these schools outlined by members of the class under supervision. Required of Juniors. Alternate years. Two hours a week, **Second Semester.**

D 717 M—**Psychology of Religion.** The course is designed to make a study of the psychological processes involved in religious experience. A study is made of the nature of religion, the nature of religious experience as differentiated from any other type of worship attitude, and the practical value of the teaching program in the development of the religious life. Elective to Middlers. Three hours a week, **First Semester.** Alternate years, not given in 1931-32.

D 719 J—**Methods in Teaching Missions.** Principles and methods of conducting Missionary Classes and promoting Missionary interest in all departments of the local church. Elective to Juniors in the Diploma Course. Two hours weekly, **Second Semester.**



BOWEN HALL—REFECTORY

ELECTIVE COURSES

In order that any Elective Course shall be given according to the announcement in the schedule, at least five qualified students must elect that course.

ELECTIVES IN CLARK UNIVERSITY

In addition to the subjects offered in the regular departments of the Seminary, students in the Degree and Diploma Courses are allowed to elect courses in the College Department of Clark University, particularly in the fields of Economics, Sociology, Philosophy, Psychology and Astronomy. The number of hours permitted in such courses is limited and subjects should be selected only in conference with one's Faculty Adviser.

SUPERVISED FIELD WORK

By cooperation with the various religious organizations in and about Atlanta an opportunity is given for students to have supervised field work. Classes, clubs, societies, and services of various types are conducted by the students under the direction of a member of the Faculty. Reports on this work are brought to the class room and the session becomes a clinic on pastoral leadership in the various activities of the church.

SCHOLARSHIPS FOR ADVANCED STUDY

Students who show unusual capacity for advanced study will be permitted to compete for the annual Graduate Scholarship at either Boston School of Theology, Drew Theological Seminary, or Garrett Biblical Institute. These scholarships will be awarded from year to year only to Gammon Students who graduate in the degree course with high honors. The award will be based on the record of the candidate during the entire three years in the Seminary, and when several students are eligible, a competitive examination will be held.

SELF-HELP

Many students find it necessary to earn part of their expenses while attending the Seminary. For the first year it is especially

advantageous that a student have enough money in hand to meet most of his expenses, so that he can give his full time and attention to his studies. Opportunities for student work are offered on the campus and in the buildings and several students defray part of their expenses in this way. A few students find part-time positions in the City of Atlanta in restaurants, office buildings, and private homes. A young man of energy and determination can make his way if he has saved up a reasonable amount for a reserve fund.

REFECTORY

All students who room in the dormitory are expected to board in the refectory. Wholesome meals are served for the remarkably low cost of \$3.00 per week, payable in advance. No refund for board will be allowed for less than five consecutive days' absence, and advance notice of the expected absence must be given in the Seminary Office.

EXPENSES

The expenses are so surprisingly low that no student for the ministry, who has health and the willingness to work, need be deprived of the training. No charge is made for tuition or for rooms in the men's dormitory. An incidental fee of \$15.00 each semester is required for light, heat, and linen. This must be paid at the beginning of each semester, and no student will be enrolled or admitted to classes until this is cared for at the office.

The following is the average cost per student for the first Semester:

Incidental fee	\$15.00
Key Deposit50
Books (estimated)	12.50
Table Board, at \$3.00 per week, for 17 weeks	51.00
Total	\$79.00

The estimated cost for the Second Semester is the same, except that there is no key deposit,—\$78.50, making the total for the year \$157.50. There is also a Diploma fee of \$5.00 for graduates.

THE STUDENT LOAN FUND

A limited number of worthy students, members of the Meth-

odist Episcopal Church, may secure loans from the Student Loan Fund administered by the Board of Education of the Methodist Episcopal Church. Christian character, satisfactory scholarship, promise of usefulness, financial responsibility, and the recommendation of the church to which the applicant belongs are essential to a loan. Each borrower must sign an interest-bearing promissory note. Further information may be secured from the Seminary Office.

SCHOLARSHIPS

A few scholarships are available for men of college training and unusual promise of usefulness. These require the evidence of special merit in scholarly ability and high devotion to the work of the Church.

Scholarships of \$100 each are provided for students of the Colored Methodist Episcopal Church who are college graduates and enroll in the degree course at Gammon. These scholarships are provided by the Board of Missions of the Methodist Episcopal Church, South.

There are two small scholarships provided by special funds, one given in the name of *Sarah McGirt* and the other designated as the *Aunt Katherine Student Aid Fund*. These are awarded to students of merit each year.

The Lowry-Welles Scholarship has been endowed by the Rev. T. Clayton Welles and Mrs. Anna Lowrie Welles. The scholarship will amount to about \$50 a year and a Congregational student in the Degree Course will be given preference in the assignment of this scholarship.

The American Missionary Association also provides a limited number of scholarships for students at Gammon who are preparing for the ministry of the Congregational Church.

STUDENT DEPOSITS

For the convenience of the students and the safety of their funds, money may be deposited in the Seminary Office and drawn upon when needed, as in any banking system. Students are warned that it is unsafe to keep money in their rooms or to carry it about on their persons. The banks of Atlanta charge depositors in the checking account a monthly fee of one dollar, unless the daily balance averages one hundred dollars, so it is

more economical for the student to do his banking through the Seminary Office.

It is also wise and prudent for the students during the summer vacation to send to the Seminary Office the money which they desire to save for the next year's schooling. The receipt of this money will be acknowledged promptly and the amount placed in the Seminary Student Deposit account in the city bank.

ROOMS

Rooms in the men's dormitory have steam heat, electric lights, and the necessary furniture. In addition, the beds are provided with mattresses, sheets, and pillow cases. The students are required to bring blankets, quilts, and towels. Application for accommodation in the dormitory should be sent in as early as possible, for assignments are made in the order of application. No rental fee is charged for these rooms, but the student is held responsible for the preservation of the room and furnishings in as good condition as when he took possession. Dormitory privileges in Gammon Hall are accorded only to those who are enrolled in the regular courses of the Seminary, or those who are officially recognized as special students.

COTTAGES

A few cottages are available for students who were married previous to their enrollment at Gammon. The same incidental fee which is paid by other resident students is required of those who occupy the cottages. There is such demand for these cottages that application should be made at least a year before enrollment. Preference in assignments is given to students in the Degree Course.

LATE REGISTRATION FEE

It is of the highest importance that every student in the Seminary shall begin his course promptly with the opening of the Fall Semester. Late enrollment is a hindrance to the class and a serious handicap to the individual involved. In order to encourage prompt enrollment and the best results in class work there is a late registration fee of two dollars charged for students who enroll after Matriculation Day. Students will not be enrolled nor will attendance at classes be credited until the required fees are paid at the office.

THE STUDENT REGISTER

1931-1932

(Classification is based upon the student's standing at the beginning of the second semester. The number after each name indicates the semester of the class-work for which the student is registered. For instance, "(1)" after a middler's name indicates that he is registered for the first half of the middle year's work.)

SCHOOL OF THEOLOGY Students in Graduate Course

SENIORS

- Dubra, Charles Herbert, A.B. (2) Moss Point, Miss.
Clafin College.
- Edwards, Alfonso Joseph, A.B. (2) Key West, Fla.
Clark University.
- Enwright, John Thomas, B.S. (2) Ruffin, S. C.
Clark University.
- Hurdle, Edwin Milton, A.B. (2) Dallas, Texas
Samuel Huston College.
- Keller, Jacob Wycliffe, A.B. (1) Starke, Fla.
Howard University.
- Leach, Ernest James, A.B. (1) Thomasville, Ala.
Miles Memorial College.
- McLilly, Horace Nathaniel, A.B. (2) Detroit, Mich.
Clark University.
- McMillan, Elridge Webster, A.B. (1) Ruffin, S. C.
Clafin College.
- McNair, Elisha Barnepart, A.B. (1) Bassfield, Miss.
Mississippi Industrial College.
- Sartor, Warren William, A.B. (2) Smithville, Miss.
New Orleans University.
- Strait, Luther Laval, A.B. (2) Austin, Texas
Samuel Huston College.
- Strother, William Calvin, A.B. (1) Florence, S. C.
Clark University.

- Wilson, Alpheus Turner, A.B. (2) Atlanta, Ga.
Clark University.
- Wright, Giles Robert, A.B. (1) Memphis, Tenn.
Clark University.

MIDDLEERS

- Adams, James A., A.B. (2) Jackson, Tenn.
Lane College.
- Bouier, Edward Drawell, A.B. (2) Birmingham, Ala.
Miles Memorial College.
- Carrington, Charles A.B. (2) Austin, Texas
Samuel Huston College.
- Curry, John Wesley, A.B. (2) Charleston, S. C.
Claffin College.
- Gaulden, William Henry, A.B. (2) Miami, Fla.
Benedict College.
- Holmes, Jan Wesley, A.B. (2) Austin, Texsa
Samuel Huston College.
- Middleton, Joseph Richard, A.B. (2) Baton Rouge, La.
New Orleans University.
- Moore, John Dewey, A.B. (2) Macon, Ga.
Clark University.

JUNIORS

- Brown, James Wiley, A.B. (2) Jackson, Miss.
Clark University.
- Cole, Joseph Rowan, A.B. (2) Silver Creek, Miss.
Lane College.
- Griffin, John Theolia (2) Fort Smith, Ark.
Philander Smith College.
- Hanna, Leroy C., A.B. (2) Bennettsville, S. C.
Clark University.
- Hawkins, Howard Pempeton, A.B. (2) Kansas City, Kan.
Washburn College.

- Jenkins, Pliny Wheeler, A.B. (2) Davidson, N. C.
Johnson C. Smith College.
- McLaughlin, Elmer Augustus, A.B. (2) East Palatka, Fla.
Howard University.
- Riley, Ralph W., A.B. (1) Atlanta, Ga.
Morehouse College.
- Shorts, Robert Buell, A.B. (1) Gloster, Miss.
Mississippi Industrial College.
- Wright, Lucretia, A.B. (2) Hattiesburg, Miss.
Clark University.

SPECIALS

- Alcorn, Dewitt T. Collierville, Tenn.
- Cherry, Charles A. Brooklyn, N. Y.
- Hedrick, Leroy W. Franklin, N. C.
- Hunter, Charles Sheperd H. Jacksonville, Fla.
- Lewis, J. J. Savannah, Ga.
- Stemley, Carey D. Chicago, Ill.
- Swain, Matthew C. College Park, Ga.

Students in Diploma Course

SENIORS

- ✓ Barnett, Silas Sylvanus (2) Oakwood, Texas
Guadalupe College High School.
- ✓ Harper, Benjamin Franklin (2) Vaiden, Miss.
Haven Academy.
- ✓ Jones, Estelle McCulley (2) Knoxville, Tenn.
Johnson City High School.
- Killough, Seth A. (1) Chattanooga, Tenn.
Wiley College High School.
- Knight, Theodore Roosevelt (1) Molena, Ga.
Clark University High School.
- Richardson, Carson Harris (2) Bishopville, S. C.
Clark University High School.

MIDDLERS

- ✓ Booze, Henry Cary (1) Port Arthur, Texas
Lincoln High School.
- ✓ Dougan, Egbert (2) New York, N. Y.
New York City High School.
- ✓ Grissom, Thomas Pendleton (2) Atlanta, Ga.
Clark University High School.
- ✓ Hamilton, Marion Murphy (2) Atlanta, Ga.
Atlanta University.
- ✓ Wootten, Thomas Harrison (2) Wentworth, N. C.
Washington High, Reidsville, N. C.

JUNIORS

- Bullock, Theodore Chester Roosevelt (2) Enfield, N. C.
Albion Academy.
- Dula, John Quilla (1) Hickory, N. C.
Central High School.
- Hamilton, Ransom Elijah (2) White Plains, N. Y.
Claffin College High School.
- Hogue, George Edward (1) Franklin, N. C.
Western Union Academy.
- Johnson, Emanuel Marshall (1) Ardmore, Okla.
Douglass High School.
- Ross, Thomas Lockwood (2) New York City
Frelinghuysen High School.
- Thomas, Frederick Douglass (2) Still Pond, Md.
Garnett High School.

SPECIALS

- Amey, John T. Atlanta, Ga.
- Asbury, Howard de Grasse Boston, Mass.
- Dorsey, Irby D. Cleveland, Ohio
- Garrison, James Lee Springfield, Ohio
- Mayfield, Spurgeon Jay Brooklyn, N. Y.
- Mitchell, Louise Atlanta, Ga.
- Moorman, Eugene Harriss Evington, Va.
- Perryman, James, Jr. Goliad, Texas
- Rambo, John Rome, Ga.

SCHOOL OF MISSIONS

SENIORS

Strait, Lula Redding Atlanta, Ga.
Clark University High School.

JUNIORS

Jackson, Mildred Cartersville, Ga.
Middleton, Helen B. Baton Rouge, La.

SPECIAL

Arnold, Eula V. Jonesboro, Ga.
Enwright, Eula C. Atlanta, Ga.
Hogue, Beaulina Amilee. Franklin, N. C.
Holmes, Naomi Ruth. Austin, Texas
Hurdle, Frankie C. Dallas, Texas
Keller, Bessie Watts. Starke, Fla.
McMillan, Amy R. Ruffin, S. C.
Neal, Frankie. Newnan, Ga.
Perryman, Lena Goliad, Texas

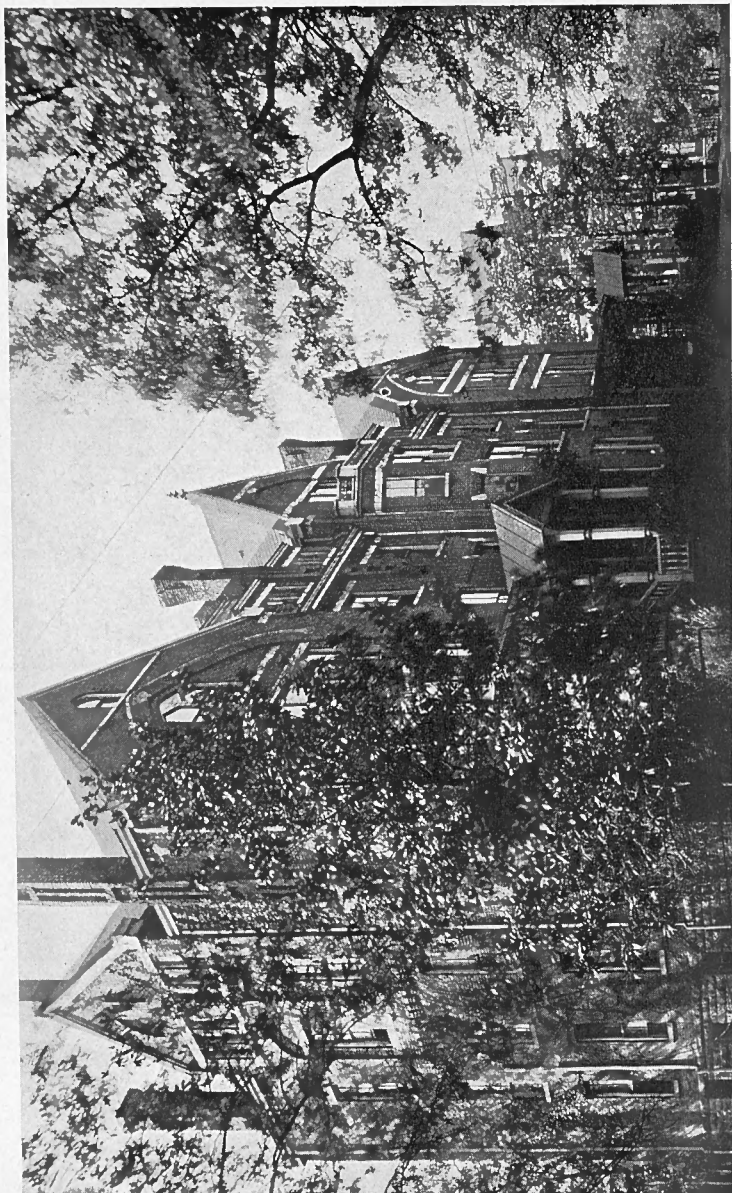
STEWART FOUNDATION PRIZES

FOR BEST ORATIONS

The Graduate Group Jacob Wycliffe Keller
The Undergraduate Group Egbert Dougan

FOR BEST HYMNS

The Graduate Group Giles Robert Wright
The Undergraduate Group Thomas H. Wootten



GAMMON HALL,—DORMITORY

SUMMARY

Degree Students	39
Seniors	14
Middlers	8
Juniors	10
Specials	7
Diploma Students	27
Seniors	6
Middlers	5
Juniors	7
Specials	9
Missions Students	12
Seniors	1
Middlers	0
Juniors	2
Specials	9
—	
Total	78
Clark University Students	165
—	
Grand Total	243

DENOMINATIONS REPRESENTED

Methodist Episcopal	52
African Methodist Episcopal	4
Colored Methodist Episcopal	10
Missionary Baptist	7
Congregational	4
Undenominational	1
—	
Total	78

 T. E. DIZON S. Car.	 T. E. WILLIAMS Texas	 B. E. SPANG Tenn.	 H. J. JOHNSON W. Va.	 J. L. MARTEL Texas	 E. HARTLEY Texas	 W. M. WOOD Texas
 F. A. CLAPP PRESIDENT	 J. E. SPANG Tenn.	 D. H. HUGGINS W. Va.	 R. B. JOHNSON Tenn.	 J. L. MARTEL Texas	 J. L. MARTEL Texas	 J. L. MARTEL Texas
 D. H. HUGGINS President, W. Va.	 D. H. HUGGINS Vice Pres. Ind. Gas.	 D. H. HUGGINS Chaplain, N. Y.	 D. H. HUGGINS S. Car.	 D. H. HUGGINS Tenn.	 D. H. HUGGINS Tenn.	 D. H. HUGGINS Tenn.
						
 F. A. CLAPP PRESIDENT	 J. E. SPANG Tenn.	 D. H. HUGGINS Vice Pres. Ind. Gas.	 D. H. HUGGINS Chaplain, N. Y.	 D. H. HUGGINS S. Car.	 D. H. HUGGINS Tenn.	 D. H. HUGGINS Tenn.

THE FACULTY AND GRADUATING CLASS OF 1931

DEGREES AND AWARDS

MAY 1931

HONORARY DEGREES—DOCTOR OF DIVINITY

The Reverend Bishop James Arthur Hamlet,
Kansas City, Kansas.

The Reverend Frederick Asbury Cullen,
Pastor, New York City.

GRADUATING CLASSES

BACHELOR OF DIVINITY

Charles Oliver Beason, A.B.	Cosum Mason Luster, A.B.
Leander Anthony Brown, A.B.	Harry James McDonald, A.B.
De Witt Sanford Dykes, A.B.	Benjamin Franklin Shockley, A.B.
Bruce Harper Hull, B.S.	George Oliver Singleton, A.B.
Prince Albert Taylor, Jr., A.B.	

SEMINARY DIPLOMA

Marion O'Maynard Ballard	Theodore Brandon Thomas
Eugene Harris	James Llewellyn Wattley
Joseph Cephas Hill	Thaddeus Edwards Williams
Felix Wade Logan	William McKinley Woods

SCHOOL OF MISSIONS

Roberta Francetta Canady	Jesse Brepplah Garrison
Tummye Novella Wattley	

STATES REPRESENTED

Alabama	3
Arkansas	1
Florida	6
Georgia	15
Illinois	1
Kansas	1
Louisiana	3
Maryland	1
Massachusetts	1
Michigan	1
Mississippi	7
New York	5
North Carolina	7
Ohio	2
Oklahoma	1
South Carolina	7
Tennessee	5
Texas	10
Virginia	1
—	
Total	78

COLLEGES REPRESENTED

Benedict College	1
Claffin College	3
Clark University	17
Howard University	2
Lane College	2
Miles Memorial College	2
Mississippi Industrial College	2
New Orleans University	2
Samuel Huston College	4
Johnson C. Smith	1
Philander Smith	1
Morehouse College	1
Washburn College	1
—	
Total	39