

BULLETIN
OF
GAMMON
THEOLOGICAL SEMINARY
AND
SCHOOL OF MISSIONS



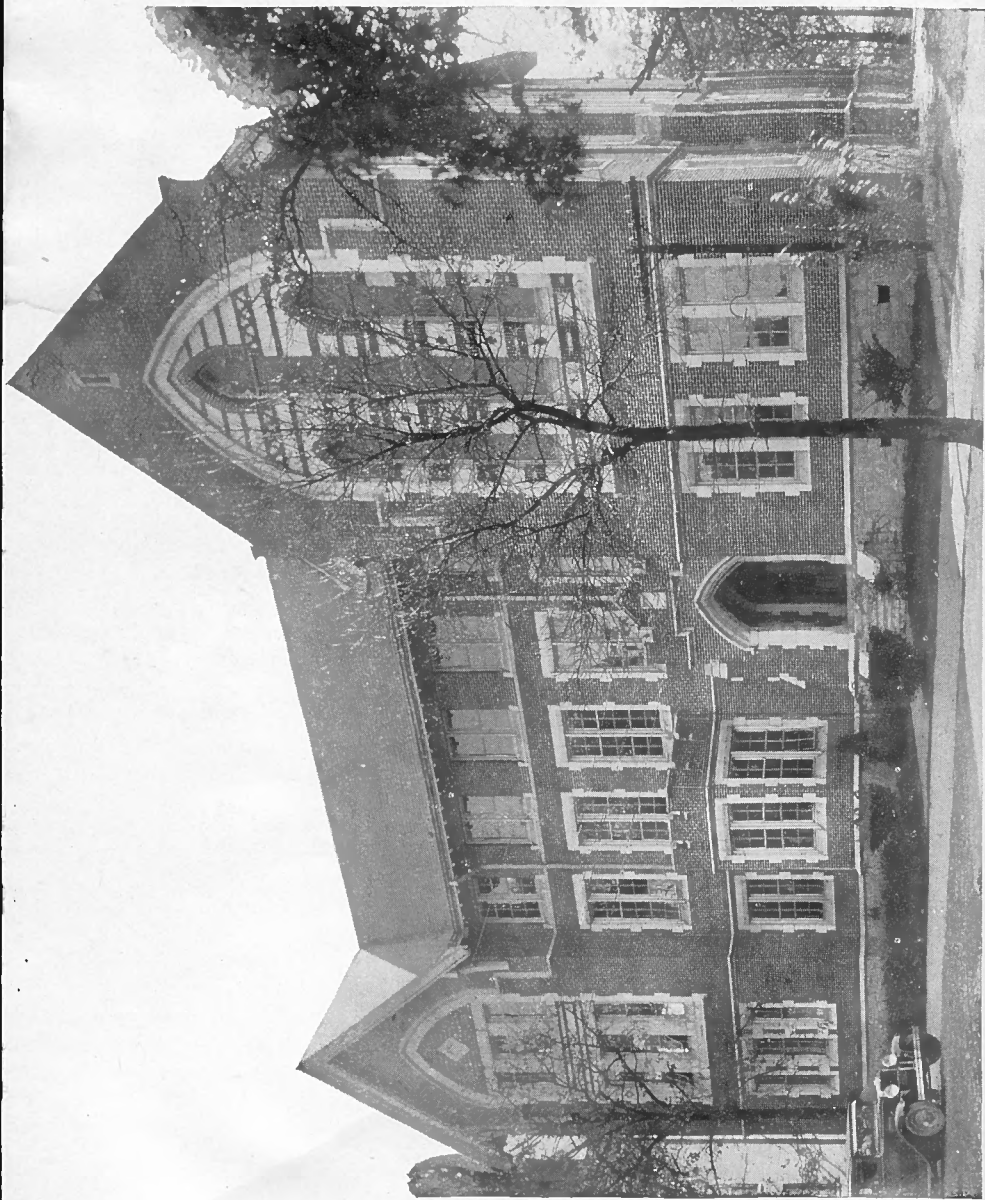
ANNOUNCEMENTS

1938-1939

VOLUME LV

JUNE, 1938

ATLANTA, GEORGIA



THIRKIELD HALL — ADMINISTRATION BUILDING

BULLETIN
OF
GAMMON
THEOLOGICAL SEMINARY
AND
SCHOOL OF MISSIONS



ANNOUNCEMENTS

1938-1939

Catalog 1938

VOLUME LV

JUNE, 1938

ATLANTA, GEORGIA

CALENDAR 1938-1939

FIRST SEMESTER

1938

- September 20, Tuesday—Registration.
September 21, Wednesday, 2:30 P. M.—First Chapel Service.
September 22, Thursday, 8:00 A. M.—Classes begin.
October 7, Friday—Matriculation Day.
2:30 P. M.—Address.
8:00 P. M.—Seminary Reception.
November 23-28, Wednesday, 5:00 P. M. to Monday 8:00 A. M.—
Thanksgiving Recess.
December 6, Tuesday—Founder's Day.
December 23, Friday, 12:30 P. M.—Christmas Vacation begins.

1939

- January 2, Monday, 5:00 P. M.—Christmas Vacation ends.
January 23-27, Monday to Friday—First Semester Examinations.

SECOND SEMESTER

- January 30, Monday—Registration.
January 31, Tuesday, 8:00 A. M.—Classes begin.
February 12, Sunday—Celebration of Lincoln's and Frederick
Douglass' Birthdays.
February 21-24—The Thirkield Lectures.
April 6-10, Thursday, 5:00 P. M. to Monday 5:00 P. M.—Easter Recess.
April, (Date to be arranged)—Annual Meeting of the Board of
Trustees.
May 12, Friday—Senior Day.
May 15-19, Monday to Friday—Second Semester Examinations.
May 21, Sunday, 9:30 A. M.—Consecration and Communion Service.
4:00 P. M.—Baccalaureate Service.
May 22, Monday, 1:00 P. M.—Alumni Luncheon.
2:30 P. M.—Alumni Reunion—Classes 1889, 1899,
1909, 1919, 1929.
8:00 P. M.—President's Reception to Alumni,
Graduating Class and visitors.
May 23, Tuesday, 10:00 A. M.—the Fifty-fourth Commencement.

BOARD OF TRUSTEES

EX-OFFICIO

Bishop Adna W. Leonard, D. D., LL. D.....Pittsburgh, Pa.
The Reverend Henry W. McPherson, S. T. B., D. D.....Chicago, Ill.
President Willis J. King, Ph. D., D. D.....Atlanta, Ga.

TERM EXPIRES IN 1939

Mr. Willis M. Everett, Attorney-at-Law.....Atlanta, Ga.
Bishop Robert E. Jones, D. D., LL. D.....Columbus, Ohio
Bishop Charles W. Flint, D. D., LL. D.....Atlanta, Ga.
Doctor J. H. Dillard.....Charlottesville, Va.
Mrs. W. H. C. Goode.....Sidney, Ohio

TERM EXPIRES IN 1940

Doctor Willis A. Sutton.....Atlanta, Ga.
Bishop Alexander P. Shaw, D. D., LL. D.....New Orleans, La.
The Reverend D. H. Stanton, D. D.....Atlanta, Ga.
The Reverend Merrill J. Holmes, D. D.....Chicago, Ill.
Bishop W. J. Walls, D. D.....Chicago, Ill.

TERM EXPIRES IN 1941

Doctor W. A. Bell*.....Birmingham, Ala.
The Reverend Wm. H. Crawford, D.D.....Meadville, Pa.
The Reverend George C. Douglass, D.D.....Cincinnati, Ohio
The Reverend G. Grant Stewart, D.D.....Los Angeles, Calif.
The Reverend W. W. Alexander, D.D.....Atlanta, Ga.

OFFICERS OF THE BOARD

President—Bishop Charles W. Flint
Vice-President—Dr. Wm. H. Crawford
Second Vice-President—Mr. Willis M. Everett
Secretary—Rev. D. H. Stanton
Local Treasurer—President Willis J. King

EXECUTIVE COMMITTEE

Willis M. Everett, Vice-Chairman	Bishop Robert E. Jones
M. J. Holmes	Bishop Alexander P. Shaw
D. H. Stanton, Secretary	Willis J. King

TREASURER AND ATTORNEY-IN-FACT

The Reverend George C. Douglass.....Cincinnati, Ohio

STANDING COMMITTEES OF BOARD OF TRUSTEES

Bishop Charles W. Flint as Chairman of the Board is, ex-officio, a member of all standing Committees.

Buildings and Grounds: Bishop Charles W. Flint, President Willis J. King, Reverend D. H. Stanton, Mr. Willis M. Everett.

Faculty and Courses of Study: Bishop R. E. Jones, President Willis J. King, Rev. W. W. Alexander, Dr. M. J. Holmes.

Library: Dr. W. H. Crawford, President Willis J. King, Mrs. W. H. C. Goode, Dr. W. A. Bell.

Nominations for the Board: Mr. Willis M. Everett, Dr. George C. Douglass, President Willis J. King.

Finance Committee: Dr. Merrill J. Holmes, Mr. Willis M. Everett, Dr. George C. Douglass, Dr. J. H. Dillard, President Willis J. King.

OFFICERS OF ADMINISTRATION

WILLIS J. KING
President

FRANK W. CLELLAND
Registrar

MRS. ELEANORA B. SMITH
Bursar

MISS MILDRED E. WALLACE
Secretary to the President

CHARLES A. TALBERT
Librarian

HENRY C. McDOWELL
Secretary of Stewart Missionary Foundation
and Director of School of Missions

GEORGE A. PALMER
Superintendent of Buildings and Grounds

THE SCHOOL OF MISSIONS
IN
Gammon Theological Seminary
MAINTAINED BY
The Stewart Missionary Foundation
For Africa

TRUSTEES

Bishop Charles W. Flint D. D. LL.D.....Atlanta, Ga.
The Reverend G. Grant Stewart, D.D.....Los Angeles, Calif.
The Reverend M. J. Holmes, D. D.....Chicago, Ill.
President Willis J. King, Ph.D., D.D.....Atlanta, Ga.
The Reverend Henry C. McDowell, B. D. D.,.....Atlanta, Ga.
The Reverend George C. Douglass, D.D.....Cincinnati, Ohio

EXECUTIVE COMMITTEE

Bishop Charles W. Flint, G. Grant Stewart, Willis J. King
Henry C. McDowell

FACULTY OF STEWART FOUNDATION
SCHOOL OF MISSIONS

The Reverend Willis J. King, President
Henry C. McDowell, Director and Secretary

The Faculty of Gammon Theology Seminary are also teachers in
the School of Missions.

FACULTY

THE REVEREND WILLIS J. KING

Boston University, S. T. B., Ph. D., D. D., Fellow,
Julius Rosenwald Fund, for research in Oxford
University and Palestine.
Professor of Old Testament

THE REVEREND JOHN R. VAN PELT

Boston University, S. T. B., Ph. D.; Halle, Germany,
Graduate Study
Professor Emeritus of Christian Doctrine

THE REVEREND FRANK W. CLELLAND

Boston University, A. M., Ph. D.; Harvard University,
Episcopal Theological School, Chicago
University, Graduate study.
Professor of New Testament and Christian Doctrine

THE REVEREND MATTHEW W. CLAIR, JR.

Boston University, S. T. B.; Iliff School of Theology, S. T. M.
Professor of Preaching and Church Administration

THE REVEREND CHARLES A. TALBERT

Gammon Theological Seminary, B. D.; Northwestern University,
M. A.; University of Chicago, Graduate Study.
Associate Professor of Christian History

THE REVEREND HENRY C. McDOWELL

Talladega Seminary, B. D., D. D.; Hartford Seminary
Foundation, Graduate work in Anthropology,
Ethnology, and Science of Missions.
Professor of Christian Missions

MISS CONSTANCE ARNOLD

Mt. Holyoke, A. B., M. A.; Bryn Mawr, Graduate Study.
Director of Women's Work and Instructor
in Religious Education

*PROFESSOR R. A. SCHERMERHORN

Northwestern University, M. A.; Garrett Biblical Institute,
B. D.; Yale University, Ph. D.
Instructor in Philosophy

*PROFESSOR J. DeKOVEN KILLINGSWORTH
American Conservatory of Music, B. M. E.; Chicago
Conservatory of Music, M. Mus. Ed.
Instructor in Music

*In exchange with Clark University.

SPECIAL LECTURERS

PRESIDENT ARLO AYRES BROWN
Drew University, Madison, N. J.
Thirkield Lectureship

DR. ARTHUR RAPER
Executive Secretary, Georgia
Commission on Interracial Cooperation
Atlanta, Georgia
Race Relations

MISS GRACE G. STEINER
Secretary, Deaconess Work, Cincinnati, Ohio
Woman's Home Missionary Society Lectures

MISS THYRA EDWARDS
Travel-Lecturer, Chicago, Illinois
Conditions in Northern and Central Europe

DR. KIRBY PAGE
Lecturer on World Peace
New York, N. Y.

PROFESSOR ARVA C. FLOYD
Emory University, Georgia
Christian Missions

HISTORICAL STATEMENT

Gammon Theological Seminary was founded through the foresight of Bishop Henry White Warren and the Christian philanthropy of Mr. E. H. Gammon. The name of Mr. Gammon, of Batavia, Illinois, was suggested to Bishop Warren as one who was interested in the Negro Race and likely to see the great importance of the project he had in mind. The matter was presented to this keen layman in the Bishop's persuasive manner and after further conference and deliberation he made an initial gift of \$25,000.00 for the establishment of a Biblical Department in Clark University. The Bishop at the same time agreed to raise \$20,000.00 for the erection of a Theological Hall. The Rev. Wilbur P. Thirkiel, then a young preacher from Cincinnati and later Bishop, was secured as the first teacher, and the work was actually begun in 1883.

Though the beginning was small, Mr. Gammon's interest increased as he saw the work develop and his gifts multiplied. Finally he established an independent Theological Seminary, well endowed for that day, and with a strong faculty, adequate buildings, and an excellent curriculum. Professor Thirkiel was made the first president.

Gammon today is the outstanding institution in the world for the training of the Negro ministry. Its faculty and its courses are of the highest order. Although maintained by the Methodist Episcopal Church, it is non-sectarian in its policy.

LOCATION

The Seminary is located in Atlanta, Georgia, the leading city of the South on the great railroads between Washington and New Orleans. It is a center for the education of Negroes, since no fewer than four colleges are established there for that purpose. Besides there are in the city or immediate neighborhood at least five other institutions of higher learning. The churches of Atlanta, for both races,

are strong and numerous, so that every type of modern church activity may be studied at first hand.

The beautiful campus, located at the terminus of Capitol Avenue, contains seventeen and one-half acres of fine rolling land. Electric cars of the South Pryor Line run to its gates and along its extensive frontage. Its main gateway opens into the head of Capitol Avenue, the dome of the State House being in full view. It would be difficult to find a more central, accessible, and beautiful site. Adjoining the campus of Gammon Theological Seminary, with only a road between them, is the large and fine property of Clark University. To spend three years amidst these beautiful surroundings with their cultural quality is in itself both an educational and a religious process of high value.

THE PURPOSE OF GAMMON

The aim of the Seminary is to give to young people who seem to be called to the ministry and Christian service, an adequate preparation for the all-important task of religious leadership. This involves a working knowledge of the Old and New Testaments, a reasonable familiarity with the historic background of the Church, an appreciative understanding of the basic doctrines of the Christian faith, the acquirement of effectiveness in preaching Christian truth, and a masterful grasp of the problems of religious and moral leadership.

Above all, the supreme importance of the personal life is emphasized and the deeper experimental knowledge of Christ is encouraged. The ideal set before the students is not the mere acquirement of intellectual skill, but the achievement of a radiant Christian personality in sympathetic touch with the deepest needs of mankind.

THE FACULTY

The supreme essential of a theological seminary, humanly speaking, is its faculty, and Gammon has been eminently

fortunate through the years in having teachers who were men of stalwart Christian character and high scholarly attainments. They have been men of intellectual virility, sincere reverence, profound faith, and transparent honesty. Clear and forceful as has been their teaching, the potency of their strong personalities has been a still greater factor in the enrichment of the student life.

THE LIBRARY

Next to the faculty, the library of a seminary is of signal importance, for here the student has access to the best thought of all the ages. At Gammon we have one of the finest theological libraries in the South. The number of volumes and pamphlets is in excess of 23,000 and the number is increasing each year.

The collection relating to Negro slavery and emancipation in this country and in Africa contains many rare volumes. The literature of Foreign Missions, especially Missions in Africa, is abundant. One collection of seventy-five books deals with the language and educational problems in Africa and includes versions of the Bible, hymnals, and other books in native dialects.

RACE RELATIONS

The last decade and a half has seen very definite improvement in race relations in the South. Much of the leadership in this field has come from the Interracial Commission with headquarters in Atlanta. The Commission has placed great emphasis on education as the principle by which mutual understanding and mutual good will could be developed between the white and Negro races. Most of its efforts thus far have been directed to the white group. Gammon Seminary has, however, from the first, realized that training along this line is needed by both races; and so for a number of years has offered brief courses in race relations.

By an arrangement made with the Interracial Commission, it will be possible to offer at least one course in race relations for seminary credit. This course will be under the direction of a thoroughly competent member of the staff of the Interracial Commission, and will be open to senior college students of the Atlanta colleges without charge.

GAMMON ACCREDITED BY THE AMERICAN ASSOCIATION OF THEOLOGICAL SCHOOLS

One of the developments of recent years, in the history of theological education, is the organization of what is known as the "American Association of Theological Schools." This organization comprises the principal theological schools in the United States and Canada and parallels similar agencies in the college and university field. One of the chief functions of this Association is the accrediting of theological schools, on the basis of standards set up by its Commission on Accreditation. After careful examination of the character of work done at this institution, Gammon has been placed on the accredited list of the American Association of Theological Schools.

THE THIRKIELD LECTURESHIP ON PREACHING, SOCIAL SERVICE, AND INTERRACIAL GOOD WILL

This lectureship was established in 1936 by the will of the late Bishop Wilbur P. Thirkield who had provided a gift of \$5,000 for its endowment. Bishop Thirkield was one of the Founders of Gammon Theological Seminary, and its first President. His provision for this important Lectureship represents his expression of unbroken interest of many years in the Seminary, and its program for the training of Negro ministers.

STUDENT ACTIVITIES

The Gammon Y. M. C. A. is the student organization of the Seminary. All students of the Seminary are expected

to become members of this organization which has responsibility for the major student activities. The Gammon "Y" maintains a very interesting and helpful Sunday morning worship service, bringing to the institution some of the ablest speakers of the city. In addition, it directs the recreational and social life of the students of the Seminary.

THE STEWART MISSIONARY FOUNDATION FOR AFRICA

With the conviction that Gammon Theological Seminary possessed peculiar advantages for the development of missionary attitudes and loyalties and the training of missionary leaders, this Foundation was established by Rev. William Fletcher Stewart in 1894. Since that time it has been a vital part of the life and work of Gammon. The Stewart Missionary Foundation for Africa exists to encourage investigation, to spread intelligence, to increase offerings and personal consecration, and to train leaders in the interest of Christian missionary work in Africa.

In accordance with this statement of purpose the Foundation maintains its central office at Gammon and supports the work of the Department of Christian Missions. It shares in the official publication of "The Foundation" and fosters intercollegiate essay, hymn-writing, and oratorical contests. Through the work of the Secretary, contacts are made with active and prospective Christian missionary leaders. This program is supported financially by the proceeds from properties as indicated in a deed of trust which was executed by the Founder.

The Stewart Foundation was incorporated under the laws of the State of Georgia in 1924. In accordance with the spirit of the charter, the work of the Foundation is an integral part of the educational program at Gammon.

DIVISION OF CHRISTIAN MISSIONS AND SCHOOL OF MISSIONS

The work of the Division of Christian Missions is carefully integrated with the curriculum of the Seminary, it being understood that "Christian Missions" means essentially the passion for unselfish Christian service to meet the persistent needs of humanity. The same academic requirements described for the degree courses are applicable in the Division of Christian Missions and the School of Missions. Credit is given to women students for work pursued in Thayer Home. Those coming with only high school preparation will be required to take additional courses in the college department of Clark University.

The School of Missions was organized in 1914. It began with the high purpose of providing special training to wives of students in Gammon who had limited preparation and were in need of further training to meet the increasing demand upon a pastor's wife; and to train them especially for leadership in the women's missionary societies throughout the churches. Furthermore, it was the purpose to train all student volunteers who were particularly interested in service abroad as well as any Gammon or Clark University student interested in any form of missionary service.

The results of this work have been marked in the leadership and usefulness of those graduating from the school. In connection with the Woman's Home Missionary Society's Home on the Clark campus, many young women have been led to take up the work of special training for social service, deaconess work, parish helpers, and a few have gone as missionaries to Africa.

All the classes in Gammon Seminary suited to the preparation of the candidates and the purpose of their study are open to students in the School of Missions who meet the educational requirements.

Young women who elect to study in the School of Missions may secure room and board in Thayer Home, where also

they may receive training in the domestic arts and sciences. Young men are cared for in the Seminary dormitory on the same terms and with the same privileges as other students of the Seminary. All work is so perfectly blended as to make this the most desirable school of training for the youth of the Negro group.

Detailed information will be provided by the Secretary, Henry C. McDowell, at Gammon, to any person interested in pursuing this specialized course of study.

ROOMS

Rooms in the men's dormitory have steam heat, electric lights, and the necessary furniture; in addition, the beds are provided with mattresses, sheets, and pillow cases. The students are required to bring blankets, quilts, and towels. Application for accommodation in the dormitory should be sent in as early as possible, for assignments are made in the order of application. A small rental fee is charged for these rooms, and the student is held responsible for the preservation of the room and furnishings in as good condition as when he took possession.

COTTAGES

A few cottages are available for students who were married previous to their enrollment at Gammon. A small incidental fee is required of those who occupy the cottages. There is such demand for these cottages that application should be made at least a year before enrollment.

It is expected that wives of students occupying cottages on the campus, in consideration for benefits received, will pursue courses in the Seminary or at Clark University.

HEALTH AND HYGIENE

One of the recent developments of Gammon is the requirement each year of physical examinations of all prospective students, and a course of lectures on health by a competent member of the medical fraternity. These exami-

nations are conducted by a physician who is a staff member of the Atlanta Tuberculosis Association, and who is also responsible for the lectures on health. The justification for such a course is to be had, we believe, in the very high mortality rate among Negroes, in proportion to the rest of the population. It is our conviction that Negro ministers should be given some intelligent guidance in this field. Each student is required to pay a small fee to help finance this plan.

SELF-HELP

Opportunities for student work are offered on the campus and in the buildings and several students defray part of their expenses in this way. A few students find part-time positions in the City of Atlanta in restaurants, office buildings, and private homes. A young man of energy and determination can make his way if he has saved up a reasonable amount for a reserve fund, but no student should come expecting to earn his entire expenses.

THE STUDENT LOAN FUND

A limited number of worthy students, members of the Methodist Episcopal Church, may secure loans from the Student Loan Fund administered by the Board of Education of the Methodist Episcopal Church. Christian character, satisfactory scholarship, promise of usefulness, financial responsibility, and the recommendation of the church to which the applicant belongs are essential to a loan. Each borrower must sign an interest-bearing promissory note. Further information may be secured from the Seminary Office.

SCHOLARSHIPS

A few scholarships are available for men of college training and unusual promise of usefulness. These require the evidence of special merit in scholarly ability and high devotion to the work of the Church.

The Board of Missions of the Methodist Episcopal Church,

South, and the Colored Methodist Episcopal Church jointly provide scholarships for students of the Colored Methodist Episcopal Church who are college graduates and enroll in the degree course at Gammon.

There are two small scholarships provided by special funds, one given in the name of Sarah McGirt and the other designated as the Aunt Katherine Student Aid Fund. These are awarded to students of merit each year.

The Lowrie-Welles Scholarship has been endowed by the Rev. T. Clayton Welles and Mrs. Anna Lowrie Welles. The scholarship will amount to about \$50 a year and a Congregational student in the degree course will be given preference in the assignment of this scholarship.

In addition to the above, the Seminary makes provision from the regular funds of the school for a small number of scholarships amounting to \$100 each. These scholarships are available for college graduates showing unusual promise for the ministry. It is to be hoped that similar amounts will be secured from interested friends outside.

THE HORACE L. JACOBS CHRISTOLOGICAL PRIZE

For a number of years the Reverend Horace L. Jacobs, D. D., of the Central Pennsylvania Conference of the Methodist Episcopal Church offered a cash prize of \$10.00 for the best essay on some aspect of Christology. Dr. Jacobs passed to his reward recently and no prize has been given for two years. It will be of interest to the friends of Gammon everywhere to learn that we shall be able once more to offer this stimulating prize through the generosity of Dr. and Mrs. L. J. Sherrill of the Louisville Presbyterian Seminary, Louisville, Kentucky. Dr. Sherrill is Dean of the Louisville Seminary and, at present, President of the American Association of Theological Schools.

EXPENSES

The expenses are so surprisingly low that no student for the ministry who has health and the willingness to work

need be deprived of the training. A registration fee of \$5 per semester is charged to all students and a dormitory fee of \$20 each semester for light, heat and linen is required for those who live in the dormitory. These fees must be paid at the beginning of each semester and no student will be enrolled or admitted to classes until they are cared for at the office.

All students who room in the dormitory are expected to board in the refectory. Wholesome meals are served for the remarkably low cost of \$3.75 per week, payable in advance. No refund for board will be allowed for less than five consecutive days' absence and advance notice of the expected absence must be given in the Seminary Office.

The following is the average cost per student for the first semester:

Registration Fee	\$ 5.00
Student Activities	
Health	\$1.00
Y. M. C. A. Fee..	1.00
	}
	2.00
Dormitory Fee	20.00
Key Deposit50
Books (Estimated)	15.00
Table Board at \$3.75 per week, for 18 weeks	67.50
	<hr/>
Total.....	\$110.00

The estimated cost for the second semester is the same less the key deposit, health fee, and Y. M. C. A. Fee—\$107.50, making the total for the year \$217.50. There is also a Diploma fee of \$5.00 for graduation.

Cottages for married students—\$7.50 to \$10.00 for a semester, to be paid at the beginning of each semester.

TERMS OF ADMISSION

The Seminary is open on equal terms to qualified students of every denomination of Christians. Students seeking ad-

mission to the Seminary should apply to the President for an official form of application for admission. Beginning with 1937-1938 applicants will be considered under the following heads:

I. **Regular Students:** Graduates of a standard college who are candidates for the Bachelor of Divinity Degree. All such applicants must present with their applications the following credentials:

1. An official transcript of graduation from a college of recognized standing including a record of all courses pursued and the grades attained.
2. A certificate of Christian character and good standing in some Christian church. Applicants belonging to the Methodist Church are expected to present a local preacher's license or a recommendation from the Quarterly Conference or from the Official Board of the local church of which they are members.

Applicants from other denominations must present a similar recommendation from the proper officials of their respective churches.

An applicant who is a graduate of a non-accredited college, if admitted, will be received on probation until he has demonstrated his ability to do satisfactory graduate work and has made up any deficiencies in the minimum pre-seminary curriculum adopted by this Seminary in cooperation with the American Association of Theological Schools in 1936. The pre-seminary curriculum adopted contains the following distribution of requirements:

Subject	Semesters	Semester	Hours
English Composition and Literature.....	4	8-12
Philosophy	2	4 - 6
History	2	4 - 6
Psychology	1	2 - 3
A Foreign Language	4	12-16
Natural Science	2	4 - 6
Social Science	2	4 - 6

Graduates of accredited colleges whose record does not include this pre-seminary curriculum may be required to complete the shortage before they are promoted to a degree.

II. Unclassified Students:

Applicants who are not college graduates but who have graduated from a standard junior college or have completed sixty semester hours or more of acceptable academic work in a standard college may be admitted to "unclassified" standing with the privilege of taking not more than one or two courses in the Seminary each semester while completing their college degree requirements in Clark University or in another Atlanta college.

This plan replaces the former "Diploma Course" which, upon recommendation of the faculty and by vote of the Trustees, is discontinued with the year 1937-38. This action is in harmony with and is necessitated by the action of the General Conference of the Methodist Episcopal Church in 1936 which raised the requirement for admission to an Annual Conference beginning in the fall of 1938 to four years of college training.

This class of applicants must submit with their application the following credentials:

1. An official transcript of all college credits earned including the record of admission to college and a certificate of honorable dismissal from the institution last attended.
2. A certificate of Christian character and good standing in some Christian church the same as is required of college graduates.

III. **Special Students:** Mature persons who have graduated from high school but have not completed two full years of college work may be admitted as "Special Students" for a nominal connection with the Seminary while completing their college work at Clark, or at another At-

lanta College. A very limited number of such applicants may be admitted entirely at the discretion of the faculty. A few others may be admitted to certain classes at the discretion of the instructor concerned and by approval of the faculty.

All "Special Students" are distinctly on trial and may be asked to withdraw at any time their class attendance and assigned work prove unsatisfactory. These applicants, like the first two groups, must present, with their applications, both an official transcript of such high school and college work as they have done and a certificate of Christian character and good standing in some Christian church.

REQUIREMENTS FOR GRADUATION

For the degree of Bachelor of Divinity

The minimum requirement for the Bachelor of Divinity Degree is ninety-four semester hours. The curriculum is organized on the Divisional plan and the minimum requirements are distributed as follows:

DIVISION I—Biblical Literature (16 hours)

- A. Old Testament7 hours
- B. New Testament9 hours

DIVISION II—Christian History (8 hours)

DIVISION III—Christian Doctrine (6 hours)

- A. Christian Theology6 hours
- B. Philosophy and Ethics0 hours

(Note: students who offer no undergraduate credit in Philosophy will be required to take three or more hours.)

DIVISION IV—Church Activities—(29 hours)

- A. Homiletics8 hours
- B. Church Administration2 hours
- C. Pastoral Office4 hours

D. Christian Music and Worship	7 hours
E. Social Christianity	3 hours
F. Religious Education	5 hours

DIVISION V—Christian Missions (6 hours)

ELECTIVES	29 hours
-----------------	----------

Total.....94 hours

DEPARTMENT FOR TRAINING WOMEN WORKERS

Women who are college graduates and who desire to prepare for the regular ministry may enter the Seminary as candidates for the B. D. Degree. But for all others, both graduates of a junior college, or a standard two-year normal school and graduates of a standard four-year college, who wish to prepare for a more specialized type of Christian service, the Department for Women Workers was established as a co-operative effort between the Seminary and the Woman's Home Missionary Society of the Methodist Episcopal Church. The Director, who is furnished by the Society, is a member of the Faculty of the Seminary and guides the work of the women in the school. The purpose of the Department is to provide training for Christian service for the following groups:

1. The wives of the students at Gammon.
2. Women who wish to understand local church work as lay workers.
3. Those who might enter full-time church work in other fields but who need religious education as supplementary to other training.
4. Those who wish to train for church vocations as Pastor's Assistants, Religious Education Directors, Deaconesses or Social Workers.

TERMS OF ADMISSION

The Seminary through this Department offers to women a course leading to the degree of Bachelor of Religious Education. Women seeking admission should apply to the President for official application blanks. Three classes of applicants for admission to this Department will be considered:

- I. **College graduates:** Women who have graduated from a college of recognized standing and who present with their applications an official transcript of their college record and a certificate of Christian character and good standing in some Christian church similar to that required for admission to the regular seminary course, may be admitted.
- II. **Graduates of accredited Junior colleges or two-year Normal Schools,** or those who have completed at least two years work (60 semester hours) of a standard college course may be admitted as candidates for the B. R. E. Degree. These must submit with their applications the two credentials required of Class I.
- III. **Special Students:** Applicants who are graduates of high school but are unable to offer two years (60 semester hours) of college or normal school credits may be admitted to "special" standing and be permitted to take not more than one or two courses in the Seminary while completing their requirements for regular standing at Clark University or at some other Atlanta college. Such applicants must submit with their applications the two credentials required of the other groups.

REQUIREMENTS FOR GRADUATION

The normal minimum requirement for all candidates for the Bachelor of Religious Education Degree who have been admitted to regular standing is sixty (60) semester hours of approved work.

I. College Graduates must complete sixty (60) semester hours distributed as follows:

1. Thirty semester hours in basic courses in Bible, Church History, Philosophy, Psychology, Religion, Education and Social Science.
2. Thirty Semester hours in vocational and professional courses with a major of eighteen hours in Religious Education and a minor of twelve hours or two minors of six hours each in related fields chosen with the advice of the Director and the approval of the faculty.

For college graduates who present credit in senior college courses in the fields listed under (1) as "basic courses," the time required for earning the degree may be shortened but in no case can the degree be earned in less than one year (30 semester hours) of residence work.

II. Graduates of accredited Junior Colleges or two-year Normal Schools and those who present sixty or more semester hours of approved college work may complete the requirements for the degree in two years or sixty semester hours. The sixty semester hours presented for admission must include the following:

English—12 hours	Psychology—9 hours
Science—6-8 hours	Education—6 hours
Social Science—12 hours	Electives—13-15 hours

If the student can not present full credit in each field she may complete her requirement in Clark University during her residence in the Seminary.

III. Special Students by working in Clark University or in some other Atlanta college must complete a total of sixty semester hours as specified under II above, before they can attain regular standing and become candidates for the B. R. E. Degree.

WORKING RELATIONS WITH THE ATLANTA SCHOOL OF SOCIAL WORK

Gammon Theological Seminary has a relationship with the Atlanta School of Social Work whereby Gammon students who are college graduates may earn there a limited amount of credits towards a seminary degree.

1. Women graduates of accredited colleges must complete sixty semester hours for the Bachelor of Religious Education Degree; 30 hours of which are prescribed in basic courses in Bible, Church, History, Philosophy, Psychology, Religion, Education and Social Science; and thirty hours are prescribed in vocational and professional courses. One-third of the latter may be earned in the Atlanta School of Social Work in theory and content courses approved by the President and Registrar of the Seminary.
2. In addition to the thirty hours of prescribed vocational theory and content courses, at least three semester hours of supervised field work may be required of the candidate, the kind and amount of which to be determined in the light of the School of Social Work courses to be offered for credit toward the B. R. E. Degree. Some of this field work must be done in church work under the supervision of the Gammon faculty.
3. The above maximum requirement of 60 hours for the B. R. E. degree may be reduced in special cases where the candidate presents senior college credits in the prescribed 30 hours of basic courses.
4. Courses in Gammon Seminary may be taken without charge by students regularly enrolled in the Atlanta School upon the following conditions:
 1. Courses to be selected with the approval of the Director and Registrar of Atlanta School of Social Work.

2. The total credit hours so included in any student's semester program not to exceed six semester hours and the total for the two years' course not to exceed twenty semester hours.
5. Any modification of the foregoing conditions for a given student must be approved by both the Director and Registrar of Atlanta School and the President and Registrar of Gammon Seminary.

SUMMER SCHOOL

Gammon Theological Seminary, in cooperation with the six other institutions of higher learning in Atlanta, conducts a two weeks' Ministers' Institute. Courses designed to meet the needs of pastors and religious workers, irrespective of denomination, are offered in the fields of Bible study, sermon building, missions, religious education, organization of church activities, etc.

THE COURSES OF STUDY

I. OUR GENERAL OBJECTIVE

The general objective of Gammon Theological Seminary is to provide the needed guidance and enrichment of the experience of men and women who are preparing for various fields of Christian service. These include the pulpit and pastoral ministry, educational ministry, missionary service in the United States and abroad, and other related types of Christian service. Specifically, this involves the acquisition of certain types of information and knowledge, the development of Christian attitudes toward life and the program of Christian activities, and the acquiring of skills and techniques in the performance of the functions of the Christian ministry in its various forms.

II. GUIDING PRINCIPLES

All education we consider to be a process in which the individual learns to adjust himself creatively to the reality of his environment. Each of the many special lines of education is to be viewed as a part

of the total process of adjustment to environment; but each special line of education is to be controlled by a basic emphasis upon a particular field of functioning or service. Theological education we consider to be the process in which the individual learns to adjust himself to his environment under the control of a basic emphasis upon Christian service. As a process, it is ever changing and is in constant need of restudy, revision, re-organization and re-adaptation so as to meet actual scientifically discovered and changing need. We would, therefore, seek to substitute a more scientific, flexible, unified curriculum for the departmental system. It is our plan so to co-ordinate and integrate all of the various elements in the curriculum that each emphasis will contribute to the achievement of our objective, namely, that of meeting the needs of the student. More specifically, this would provide opportunity for the individual student to concentrate along the chosen lines of service for which he is best adapted without abandoning a proper foundation of basic requirements. In this manner we hope to avoid the traditional uniformity which treated all students more or less alike.

III. THE DIVISIONAL ORGANIZATION

Believing that the divisional type of organization more effectively serves the needs of the student, we have made a thorough study of existing needs and have organized our curriculum accordingly. As far as we are able to see at present there are the following needs which we propose to provide for in the following DIVISIONS:

- (1) Division of Biblical Literature
- (2) Division of Christian History
- (3) Division of Christian Doctrine
- (4) Division of Church Activities
- (5) Division of Christian Missions

DIVISION I. BIBLICAL LITERATURE

A. Old Testament History, Literature and Religion Professor King

1-2. Old Testament History and Literature

A general survey of the historical development of the Hebrew people from the earliest times to the Christian era, and

a critical study of the literature of the Old Testament with reference to the origin, date, and authorship of the several books. (Required of Juniors)

First and Second Semesters 2 hours

3. Hebrew Prophecy through the Exile

A study of the prophetic movement among the ancient Hebrews from the earliest time to the Babylonian Exile. (Required of Middlers)

First Semester 3 hours

4. Hebrew Prophecy in the Post Exilic Period

A continuation of the study of the prophetic movement from the period of the exile to the close of the movement.

Second Semester 3 hours

11. Religious Teachings of the Old Testament

A systematic study of the teaching of the Old Testament relative to God, Man, Sin, Forgiveness, the Problem of Suffering, Messianic Hope, Future Life.

First Semester 3 hours

12. The Poetry of the Old Testament

A brief survey of the characteristics of Hebrew meter, and a more detailed study of those portions of the Old Testament generally regarded as poetry, particularly the Psalms and Wisdom Literature.

Second Semester 3 hours

21-22. Elements in Hebrew Language

A study of the principles and structure of the Hebrew Language with translation of selected portions of the Old Testament.

First and Second Semesters 3 hours

(Elective to students when a sufficient number request that it be offered)

B. New Testament History, Literature and Religion

Professor Clelland

1 - 2. History and Literature of the New Testament

A survey of environment, sources, founder and principal leaders of early Christianity. (Required of Juniors)

The Life and Teaching of Jesus according to the Synoptic Gospels.

First Semester 3 hours

The Work and Teachings of the Apostles

Second Semester 3 hours

3. The Synoptic Gospels

A study of the Synoptic Problem in an effort to trace the growth of the Synoptic Tradition about Jesus followed by the exegesis and interpretation of Gospel of Mark and its parallels in Matthew and Luke.

First Semester 3 hours

4. The Pauline Letters

Introduction and exegesis of selected letters of Paul in order to understand and evaluate his contribution to the interpretation and growth of the Christian Message.

Second Semester 3 hours

11. New Testament Exegesis: The Epistle to the Hebrews and The General Epistles.

Exegesis will be based on the English Text. Standard commentaries and modern translations will be used extensively in these courses.

First Semester 2 hours

12. New Testament Exegesis: The Gospel and Epistles of John.

A careful study of the style, purpose, and thought of the Fourth Gospel in comparison with the Synoptics and an examination of the Epistles as commentaries on the message of the Gospel.

Second Semester 2 hours

13. New Testament Exegesis: The Book of Acts.

An examination of the authorship, sources, and accuracy of the Book with an exegetical reading of the text to discover the experiences and thought of the first Christians about Jesus, God and the Holy Spirit.

First Semester 2 hours

14. Jewish and Christian Apocalypses

A brief survey of apocalyptic literature and thought followed by a careful examination, analysis and interpretation of the Revelation of John.

Second Semester 2 hours

21-22. New Testament Language: Elements of New Testament Greek.

For those who have no knowledge of Greek. This course will be offered only at intervals when a sufficient number of students request it.

First and Second Semesters 3 hours

DIVISION II. CHRISTIAN HISTORY

Professor Talbert

1. **General Survey of the Christian Movement: Christianity in History**
From the rise of Christianity in Palestine to the year 800 A. D. (Required of Juniors)
First Semester 3 hours
2. **Christianity and the European Nations**
A survey of the Christian Movement in Europe and its effect upon the modern world. (Required of Juniors)
Second Semester 3 hours
3. **Social Origins of Christianity**
Christianity and its social setting. (Not offered in 1938-39)
First Semester 3 hours
4. **American Christianity**
From the colonial times to the present time. (Offered to Middlers)
Second Semester 3 hours
5. **English Church History**
A study of the Church in England and the rise of the Dissenting Movements. (Not offered in 1938-39).
First Semester 2 hours
6. **History of Christian Doctrine**
A study of the historical development of Christian Doctrine from the Christological Controversies to the present time.
Second Semester 3 hours
7. **History of the Western Monasticism**
Rise and development of the monastic ideal; decline, decay and the rise of the Mendicant Orders.
First Semester 2 hours
9. **The Church and the Early Frontier**
A study of the religious forces at work on the frontier.
First Semester 3 hours
10. **History of Methodism**
A study of the Rise and Development of Episcopal Methodism. (Not offered in 1938-1939).
Second Semester 3 hours
21. **History of the Reformation**
A study of the causes for reform and the results of the

reformers. (Not offered in 1938-1939).

First Semester 2 hours

22. **Rise and Development of the Negro Church in the United States**

The causes for the rise of the Negro Church and its relation to his total life. (Not offered in 1938-1939).

Second Semester 3 hours

24. **The American Churches and the Negro**

A study of the attitude of the Church toward the Negro from the earliest times in America to the end of the period of Reconstruction.

Second Semester 3 hours

DIVISION III. CHRISTIAN DOCTRINE

A. Christian Theology

Professor Clelland

1 - 2. **Christian Theology**

A survey of the content of the Christian Faith, such as the doctrines of God, Man, Sin, Christ and the Holy Spirit. (Required of Middlers)

First and Second Semesters 3 hours

3. **Jesus and the Doctrine of Salvation**

A survey of the historic theories of salvation and place of Jesus in them followed by a re-examination of the problem in modern thought.

First Semester 2 hours

4. **Modern Problems of Christian Faith**

Selected problems, such as miracles, prayer, immortality, the use of the Bible in Theology, will be studied.

Second Semester 2 hours

B. Philosophy and Ethics

(1) Professor Schermerhorn

1. (C. U., Phil. Cl.) **Introduction to Philosophy**

A general orientation of the student to the problems of science and of value with a review of typical solutions offered by idealism, realism and pragmatism. (Required of Juniors who have not had this course in college).

First Semester 3 hours

2. (C. U., Phil. C4.) **Principles of Ethics**

An introduction to value theory, the development of tribal and national morality, a historical survey of ethical thought. The relation of psychology to ethics, types of ethical theory and the bearing of religion and metaphysics on ethical issues will be considered.

Second Semester 3 hours

4. (C. U., Phil. C6) **Philosophy of Religion**

An appraisal of primitive religion, ethnic faiths and psychological study of typical phenomena in conversion and mysticism, with metaphysical implications in a world view including the place of mind in nature, freedom, immortality and God.

Second Semester 2 hours

(1) On leave of absence 1938-1939.

DIVISION IV. CHURCH ACTIVITIES

A. Homiletics

Professor Clair

1 - 2. **Homiletics**

A study of the place and value of preaching. Principles of sermon construction, illustrative material, outlining, preparation and presentation of sermons. (Required of Juniors)

First and Second Semesters 3 hours

3. **The History of Preaching**

A survey of preaching and preachers from the time of Jesus. Biographical sketches of the lives and the homiletical methods of some of the great preachers of the Christian Church. (Not offered in 1938-1939.)

First Semester 2 hours

5. **The Making and Delivering of Sermons**

The course is designed to give the student training in the work of preaching. Each student will be required to write at least three sermons, present four outlines and preach at least twice, with conferences with the instructor. (Required of Middlers)

First Semester 2 hours

6. **The Use of the Bible in Preaching**

This course is designed to make use of the historical method of Bible study in preaching. Texts and incidents will be studied critically. Sermon construction based on results with

application to modern life problems. (Offered to Seniors)
Second Semester 2 hours

B. Church Administration and Parish Activities

Professor Clair

2. Church Administration

A course with the pastor as an administrator. A study of efficient methods in church organization, finance, men's work, women's work and relation of the Church to other agencies of community. (Required of Seniors)

Second Semester 2 hours

3. Pastoral Evangelism

A study of the methods of the great revival movements. Principles and practice of evangelism today. Endeavor to make each church an evangelistic church.

First Semester 2 hours

12. The Rural Church

A study of the trends and problems in rural life; relation to urban and world communities, place in cultural development of civilization. Function of the church, and the church in the development of a wholesome and integrated rural community.

Second Semester 2 hours

14. The City Church

The church in the city: Life, problems, population trends, their influence on institutions of the city; adaptation of church program to community needs. (Not offered in 1933-39)

Second Semester 2 hours

C. Pastoral Office

Professor Clair

1-2. Pastoral Office

A study of the minister and his task, designed to enable him to deal with problems of the sick room, counseling, regular parish duties of administration, rites of marriage, burial of the dead, and baptism. (Required of Middlers)

First and Second Semesters 2 hours

D. Christian Music and Worship

Professors Arnold, Clair and Killingsworth

1. Music Essentials

A course designed to familiarize the student with the funda-

mentals of music and give him a general appreciation of pitch, rhythm and tone quality. It includes sight singing (drill in scales, intervals, melodies, and part singing), study of music notation and terminology, and an elementary knowledge of vocal and instrumental form. (Required of Juniors) Professor Killingsworth
First Semester 2 hours

3. Hymnology

A study of hymns and hymn writers from Charles Wesley down to the present day; twentieth century hymnody, relation of music and worship, and program building. (Required of Middlers or Seniors) Professor Killingsworth
First Semester 2 hours

5. Seminary Choir

Open to all male students who can pass the vocal examination given at the beginning of each semester. Representative compositions of the great classic writers for unaccompanied singing as well as compositions by modern masters of choral writing are studied and prepared for public performances. One hour (non-credit) each week. Professor Killingsworth
First and Second Semesters

11. Music and Worship in Christian Education (Undergraduate)

A consideration of the meaning, objectives, materials and administration of group worship in the educational program of the Church; comparison, selection and presentation of worship programs for different ages and occasions. (Not offered in 1938-39) Miss Arnold
First Semester 2 hours

14. Worship

A study of the principles and value of worship. The trends of non-liturgical churches and techniques of modern worship. (Required of Seniors) Professor Clair
Second Semester 3 hours

21-22. Religious Dramatics (Undergraduate)

A study of the historical development of religious dramatics; use of educational dramatics with various age groups; selection of material, elements of dramatic production; writing of dramatizations; presentation of religious plays and pageants. Miss Arnold
First and Second Semesters 2 hours

E. Social Christianity

Professor Clair, Dr. Raper

1. Community Organization

A study of organization, national and local agencies, their functions in community life and relations to the church.

First Semester 2 hours

2. Christianity and Social Progress

A study of problems of wealth, poverty, industry, mechanization of urban life, the family and political movements; their influence upon our institutions, the opportunity of the church for reconstruction in light of the teachings of Jesus.
Professor Clair

Second Semester 2 hours

3. Race Relations

A survey of the psychological and social causes of prejudice. The problem in America between two major racial groups. The opportunity of the Church to improve these relations in light of the brotherhood ideal of the teachings of Jesus. (Not given in 1938-39) Dr. Raper

First Semester 3 hours

5. Health and Hygiene

First Semester 1 hour

F. Christian Education

Professors Arnold and Clair

1. Introduction to Christian Education in the Local Church (Undergraduate)

An introductory course giving a general view of the field of religious education in the local church; a brief survey of the church school, Epworth League meetings, week day and other agencies of Christian Education. (Required of undergraduate candidates for B. R. E. Degree) Miss Arnold

First Semester 3 hours

3. Principles of Moral and Religious Education

The study of the principles underlying religious education and their implications for the organization, administration and curriculum of the church school and related agencies. (Required for B. D. Degree) Professor Clair

First Semester 3 hours

4. **Organization and Administration of the Church School**
 Evaluation of the total church program as organized for its educational ministry; survey of factors in the administration of the program; selection and training of leaders. (Required for B. D. Degree) Professor Clair
 Second Semester 2 hours
7. **Methods of Teaching Religion (Undergraduate)**
 A fundamental course in the methods of teaching religion: Objectives, selection of materials and activities, classroom methods, teacher technique and preparation, evaluation and measurement of results. (Required for B. R. E. Degree) Miss Arnold
 First Semester 3 hours
8. **Curriculum of Christian Education (Undergraduate)**
 A general survey of the curricula of Christian Education in the past and in the present; principles underlying the selection of curriculum for local needs. Miss Arnold
 Second Semester 3 hours
11. **Religious Development of the Child (Undergraduate)**
 A study of the characteristics, attitudes, problems and needs of the child; study of the factors necessary for his religious development; needs and methods of religious instruction for children. Miss Arnold
 First Semester 2 hours
13. **Psychology of Religious Experience**
 An investigation of the psychology of religion as a science and the analysis of religious experience, normal religious development, Christian conversion, sin, worship and prayer, mysticism and their implications for the Christian leader. Professor Clair
 First Semester 2 hours
20. **Theory and Practice of Week-day and Vacation Church Schools (Undergraduate)**
 A consideration of the need for week day and vacation religious education; objectives, principles and methods, and curricula for such schools or classes; administration and supervision. Miss Arnold
 Second Semester 2 hours
22. **The Church Work and Young People**
 A study of the place of the church in the life of young people

ple, the problems of youth, how to help them with their adjustments and find an outlet in the program and work of the church. Professor Clair

Second Semester 2 hours

25-26. **Art and Handwork in Christian Education (Undergraduate)**

A study of the value and use of handwork for children in the church school; construction of inexpensive articles and projects illustrating biblical materials, or useful in service activities; sources, selection and uses of pictures in religious education. Miss Arnold

First and Second Semesters 2 hours

28. **Use of the Bible in Religious Education (Undergraduate)**

The place of the Bible in the religious education of children and young people; selection, adaptation and presentation of Biblical material with reference to the needs and interests of the pupils. (Not offered in 1938-1939) Miss Arnold

Second Semester 2 hours

30. **Story Telling (Undergraduate)**

A survey of the types of story material suitable to the various age groups; principles, methods and sources; writing and telling of Bible stories and other stories suitable for religious education. Miss Arnold

Second Semester 3 hours

35. **Life and Teachings of Jesus (Undergraduate)**

A study of the life and teachings of Jesus as recorded in the Synoptic Gospels with references to the Fourth Gospel (Required of undergraduates for the B. R. E. Degree). Miss Arnold

First Semester 2 hours

36. **The Apostolic Age (Undergraduate)**

A study of the development of the early Church including a study of the life and letters of Paul. Required of undergraduates for the B. R. E. Degree.) Miss Arnold

Second Semester 2 hours

DIVISION V.—CHRISTIAN MISSIONS

Professors McDowell and Talbert

1. **Missionary Education in the Local Church**

A study of the meaning and worth of missionary education in the local church as the means of developing missionary

knowledge, attitudes and skills in the home, church, school and community and the application of educational principles to the organization and administration of the missionary activities in the local church. Professor McDowell

First Semester 2 hours

2. Modern Missionary Pioneers

A biographical study of a selected but representative group of internationally known personalities and their particular contribution to the world-wide mission of the Christian religion. Professor McDowell

Second Semester 2 hours

3. Problems in the World Mission of the Christian Religion

A study of the conflicting forces at work in the world today changing attitudes toward the concepts of religion and the demands they make for properly trained interpreters of the Christian religion at home and abroad.

Professor McDowell

First Semester 2 hours

4. Missionary Opportunity in Africa

A general survey of the complex political, economic, social, interracial, and religious problems and a detailed investigation of certain selected areas and groups with the purpose of understanding and appreciating the growing significance of Africa for modern missionary endeavor.

Professor McDowell

Second Semester 2 hours

5. A Survey of Home Missions

A study of the pressing needs in various kinds of community situations in our country and the methods by which the Christian church may serve these needs.

Professor McDowell

First Semester 2 hours

6. The Moslem World

With special reference to the historical developments and present influence in African life. Professor McDowell

Second Semester 2 hours

11. Christianity in its Relations with the Living Religions of Man-kind.

The study of the historical backgrounds of certain living re-

ligions of mankind, their unique values and emphases, what they have in common, and their implications for the world mission of the Christian religion. Professor McDowell

First Semester 2 hours

13. History of Modern Christian Missions

The expansion of the Christian church in the modern world with particular reference to the changing philosophy of Missions and the nature and outlook of the indigenous churches.

Professor Talbert

First Semester 2 hours

THE STUDENT REGISTER

1937-1938

SENIORS

- Bass, William Harry, Jr.....Little Rock, Arkansas
A. B., Fisk University, 1933
- Dixon, James Inman.....Atlanta, Georgia
A. B., Tennessee A. and I. State College, 1935
- Fisher, Theodore Henderson.....Oswego, South Carolina
A. B., Claflin College, 1931
- Garrison, James Lloyd.....Savannah, Georgia
A. B., Clark University, 1936
- Greene, James Napoleon.....Thomasville, Georgia
A. B., Paine College, 1934
- Miller, Walter Alfred.....Chattanooga, Tennessee
A. B., Lane College, 1935
- Moore, Asa Bradford Candler.....Sparta, Georgia
A. B., Paine College, 1934
- Tatum, Elmo Chattmon.....Yoakum, Texas
A. B., Samuel Huston College, 1935
- Terry, Archie Lee.....Crockett, Texas
A. B., Clark University, 1937

MIDDLEMS

- Copher, Charles Buchanon.....St. Louis, Missouri
A. B., Clark University, 1938
- Grayson, Philip W.....Charleston, South Carolina
B. S., Hampton Institute, August 1937
- Hightower, Verley Love.....Marshall, Texas
A. B., Wiley College, 1928
- Jackson, John Henry.....Houston, Texas
A. B., Samuel Huston College, 1936
- McMurray, George Henry.....Greensboro, North Carolina
A. B., Clark University, 1937
- Marshall, Lawrence Marcellus.....Pittsburgh, Pennsylvania
B. S. Duquesne University, 1932; Houghton College, 1936-37
- Wier, Calvin Julius.....Carrollton, Alabama
A. B., Lane College, 1936

JUNIORS

- Burley, Terry Jefferson.....Weimar, Texas
A. B., Samuel Huston College, 1937

- Davis, Burgay Lawrence.....Atlanta, Georgia
A. B., Morehouse College, January, 1937
- Dean, Henry Talmadge.....Tuckerman, Arkansas
A. B., Philander Smith College, 1937
- *Durden, Lewis Minyon.....Lufkin, Texas
Mississippi Industrial College, Clark University
- *Evans, Lorenzo.....Valdosta, Georgia
Southern Christian Institute, Clark University
- Felder, Daniel DeLeon.....Sumter, South Carolina
A. B., Allen University, 1937
- *Flanigan, Carleton Napoleon.....Dayton, Ohio
Clark University
- Frierson, Theodore Roosevelt.....Mullins, South Carolina
A. B., Clark University, 1938
- *Graham, John Henry.....Corinth, Mississippi
Clark University
- Hall, Grover Cleveland.....Bessemer, Alabama
A. B., Greater Payne University, 1937
- McGowan Edward Dorrit.....Navasota, Texas
A. B., Clark University, 1937
- Muldrow, William.....Sumter, South Carolina
A. B., Morris College, 1937
- Payne, Charlemagne Patrick.....Hallettsville, Texas
A. B., Samuel Huston College, 1936
- Shaw, Charles Austin.....Little Rock, Arkansas
A. B., Philander Smith College, 1936
- Simms, Madison Matthew.....Atlanta, Georgia
A. B., Clark University, 1937
- Taylor, Zoel Garland.....Darlington, South Carolina
A. B., Benedict College, 1937
- Wilson, William Theodore.....Hattiesburg, Mississippi
A. B., Clark University, 1938
- *Wynn, Master Julius.....Chattanooga, Tennessee
Clark University

*Conditional Juniors who lack less than one year's work for the A. B. Degree.

UNCLASSIFIED STUDENTS

(Students with a total of sixty or more hours of college credit who are working for a degree at Clark University or another Atlanta college are listed here.)

Bagwell, Clarence Waldrendorff.....Salisbury, Maryland
 Clark University
 Beal, Jesse Kirman, Jr.....Dallas, Texas
 Wiley College, Clark University
 Brooks, William Milton.....Uniontown, Pennsylvania
 Hampton Institute, Clark University
 Clark, Ernest Percy.....McKeesport, Pennsylvania
 Clark University
 Cowan, Cecil Herman.....Boley, Oklahoma
 Wiley College, Clark University
 Dickerson, Adolphus Sumner.....Augusta, Georgia
 Clark University
 Dilday, Wilbert Louis.....Rich Square, North Carolina
 Clark University
 Harkness, David Simon.....Center, Alabama
 Alabama State A. & M. Institute, Clark University
 Licorish, Joshua Edward.....New York, New York
 Clark University
 Moore, George.....St. Louis, Missouri
 Clark University
 Peyton, Charles H.....Houston, Texas
 Wiley College, Clark University
 Pugh, Thomas Jefferson.....Woodville, North Carolina
 Clark University
 Robinson, Richard Howard.....Houston, Texas
 Wiley College, Clark University
 Williams, Joshua Marcus.....Easley, South Carolina
 Claffin College, Clark University
 Williams, Roscoe Conklin.....San Antonio, Texas
 Clark University

SPECIALS

Allen, Lineunt Scott.....Meridian, Mississippi
 Clark University
 Anderson, Bolton Gilbert.....Fort Worth, Texas
 Clark University
 Booker, Ricardo Boyeton.....Montgomery, West Virginia
 Clark University
 Bridges, Neil Alexander.....Atlanta, Georgia
 A. B., Clark University, 1912; B. D., Gammon Seminary, 1915
 Cater, Joseph Edward.....Akron, Ohio
 Clark University

Clifford, Richard Lorenzo.....	Pittsburgh, Pennsylvania
Clark University	
Conner, William Ernest.....	Atlanta, Georgia
Clark University	
Conner, William Ernest, Jr.....	Atlanta, Georgia
Clark University	
Cooper, William.....	Hayti, Missouri
Clark University	
Dallas, Thomas.....	College Park, Georgia
Clark University	
Hawkins, Lloyd Wilson.....	Nashville, Tennessee
Clark University	
Hayes, Charles King.....	Webster Groves, Missouri
Clark University	
Holland, Simmie P.....	Detroit, Michigan
Moody Bible Institute, Garrett Biblical Institute, Clark University	
Hooks, Otis.....	Nashville, Tennessee
Clark University	
Hubbard, George Washington.....	Des Moines, Iowa
Oklahoma Colored Agricultural and Normal University, Clark University	
Mills, Robert William.....	Atlanta, Georgia
South Carolina A. & M. College, Johnson C. Smith University, Clark University	
Montgomery, Frank W.....	Louise, Mississippi
Clark University	
Sherman, Irvin Abraham.....	New York, New York
Clark University	
Thompson, Daniel Colbert.....	Farmington, Georgia
Clark University	
Wiggins, Mack Massie L.....	Atlanta, Georgia
Clark University	
Winston, Willis Shuford.....	Franklin, North Carolina
Johnson C. Smith University, Clark University	

WOMEN'S DEPARTMENT

Seniors

Hightower, Frances A. (Mrs. V. L.).....	Marshall, Texas
Wiley College, Clark University	

JUNIORS

Stanley, Clara Etta.....	Athens, Alabama
Alabama State Teachers College, Clark University	
Thompson, Minnie Mae.....	Atlanta, Georgia
Clark University	

SPECIALS

Clifford, Margaret (Mrs. R. L.).....	Pittsburgh, Pennsylvania
Conner, Matilda (Mrs. W. E.).....	Atlanta, Georgia
Coville, Fannie Mae.....	Knoxville, Tennessee
Georgia Normal & Agricultural College, Clark University	
Evans, Gladys Louise.....	Chattanooga, Tennessee
Clark University	
Evans, Myrtle (Mrs. Lorenzo).....	Valdosta, Georgia
Hayes, Armenta (Mrs. C. H.).....	Webster Grove, Missouri
Clark University	
Keith, Mrs. Mary F. L.....	Chattanooga, Tennessee
Kight, Madeline.....	Atlanta, Georgia
Clark University	
Peyton, Dorothy Mae (Mrs. C. H.).....	Houston, Texas
Rumsey, Carroll Dwayne.....	Ann Arbor, Michigan
A. B., University of Michigan, Atlanta School of Social Work	
White, Marie.....	Portsmouth, Virginia
Clark University	
Wynn, Hattie E. (Mrs. M. J.).....	Chattanooga, Tennessee
Clark University	

SUMMARY

Divinity	Students.....	70
	Seniors	9
	Midders	7
	Juniors	18
	Unclassified	15
	Special	21
Women's	Department	15
	Seniors	1
	Juniors	2
	Specials	12
Total.....		85
Clark University Students.....		65
Grand Total (counting none twice).....		150

NUMBER OF STUDENTS ACCORDING TO DENOMINATIONS

Methodist Episcopal	56
Colored Methodist Episcopal	5
African Methodist Episcopal	9
Baptist	8
Holiness	3
Congregational-Christian	2
Christian	2
	85
Total.....	85

GEOGRAPHICAL DISTRIBUTION OF STUDENTS

1937-1938

Alabama	4
Arkansas	3
Georgia	19
Iowa	1
Maryland	1
Michigan	2
Mississippi	5
Missouri	5
New York	2
North Carolina	4
Ohio	2
Oklahoma	1
Pennsylvania	5
South Carolina	7
Tennessee	8
Texas	14
Virginia	1
West Virginia	1
	85
Total.....	85

GRADUATES OF THE CLASS OF 1937

DOCTOR OF DIVINITY

The Reverend George A. Deslandes

The Reverend Edward Wendell Kelly

BACHELOR OF DIVINITY

Foy, James Douglass, A. B.

Hunter, C. S. H., Jr., A. B.

Freeman, Frederick Douglass, A. B.

Johnson, Moses Prophet, A. B.

Golden, Charles Franklin, A. B.

Laws, Shelby John, A. B.

Grimmett, John Frank, A. B.

Wharry, Fore C., A. B.

SEMINARY DIPLOMA

Moore, Henry Clay

BACHELOR OF RELIGIOUS EDUCATION

Hightower, Carnis Hughella, A. B.

Withers, Rose Mae, A. B.