

LABORATORY SCHOOL
OF
ATLANTA UNIVERSITY



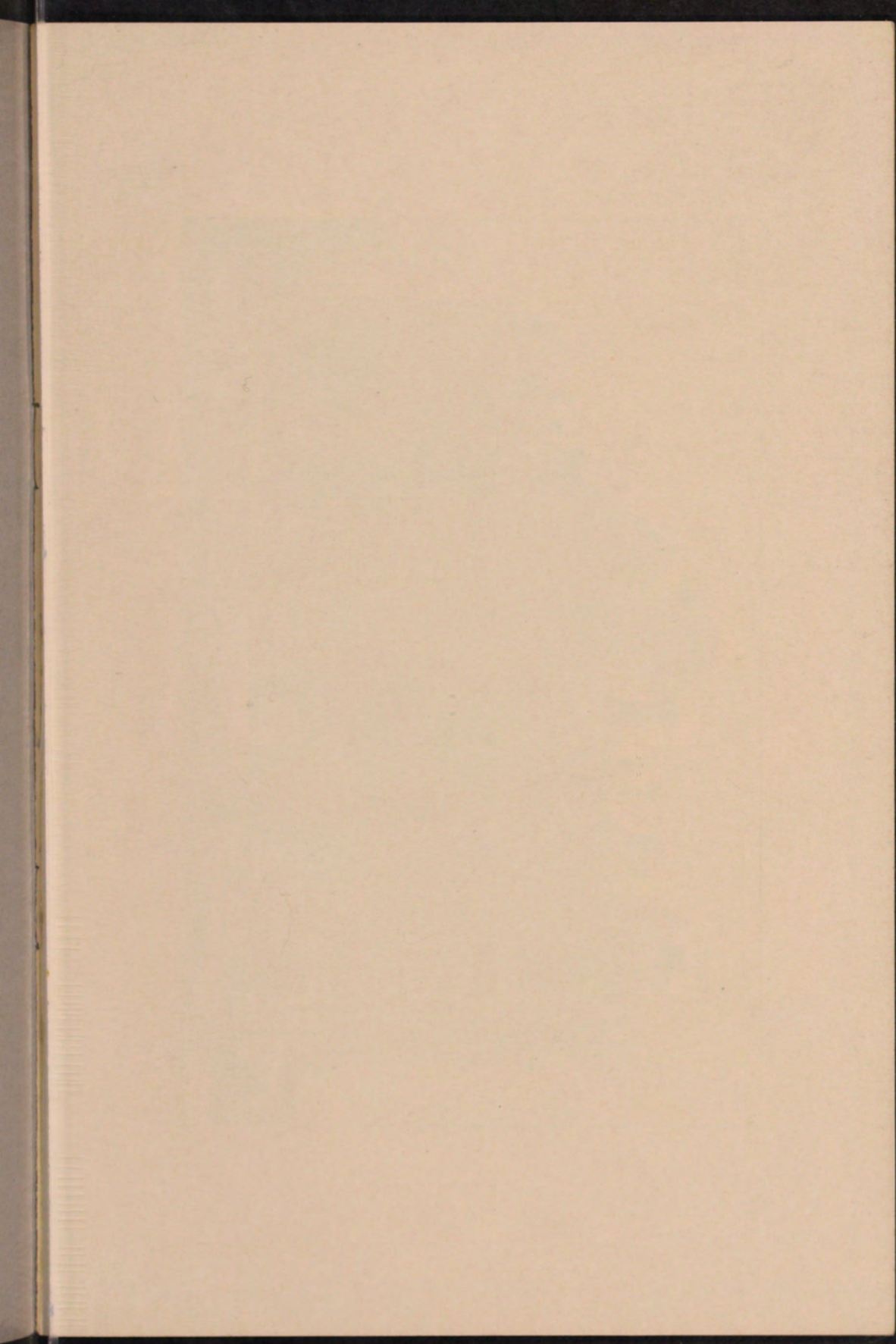
ANNOUNCEMENTS 1931-1932

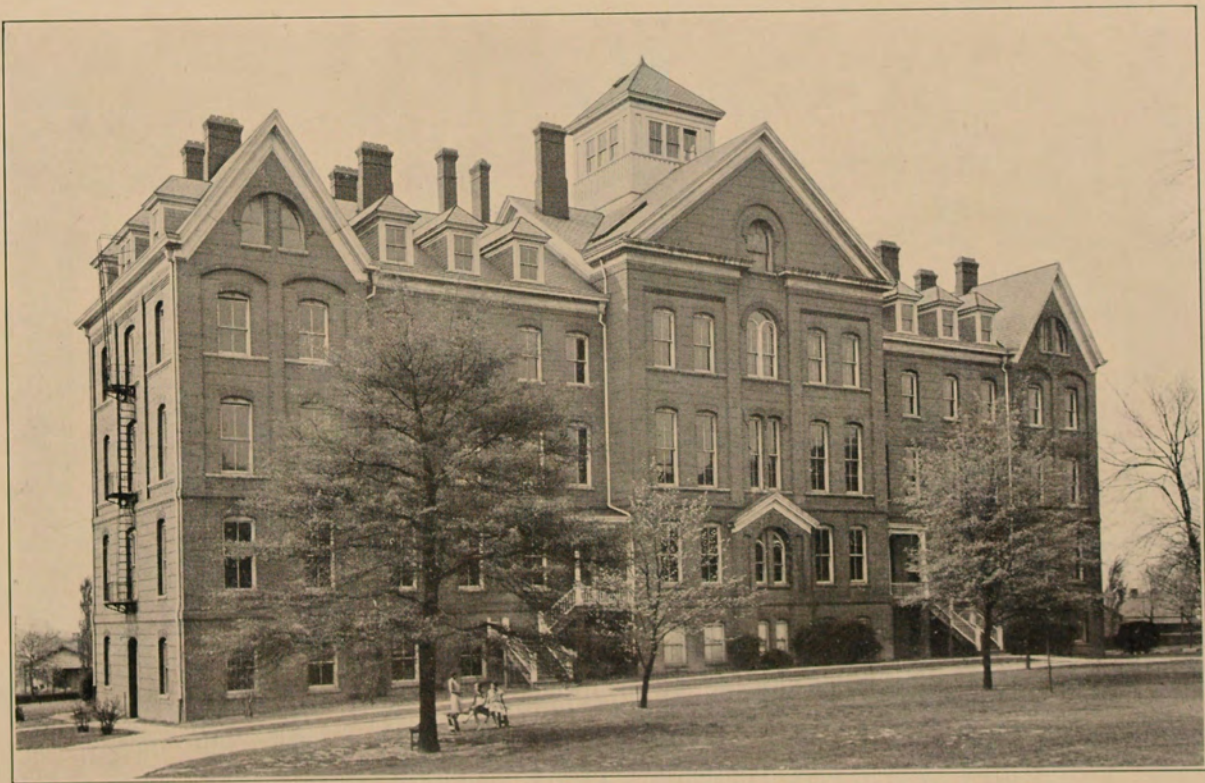
ATLANTA, GEORGIA

JULY, 1931

Entered as second-class matter, October 25, 1910, at the post-office at Atlanta, Ga., under the Act of July 16, 1894. Acceptance for mailing at special rate of postage provided for in Section 1103, Act of October 3, 1918.







HIGH SCHOOL

LABORATORY SCHOOL
OF
ATLANTA UNIVERSITY

ANNOUNCEMENTS
1931-1932

ATLANTA UNIVERSITY
ATLANTA, GEORGIA

TABLE OF CONTENTS

Calendar	3
Board of Trustees	4
Administrative Officers and Faculty	5
Purpose and Organization	7
The High School	8
Admission	8
Facilities	10
Courses and Credit	12
Expenses	12
General Information	13
The Elementary School and Kindergarten	15

CALENDAR

1931-1932

1931

Entrance Examinations September 18, 19
Registration Days September 21, 22
Full Class Work Begins September 23
Vacation Days November 26, December 19-27

1932

First Term Closes January 23
Registration for Second Semester January 25
Second Term Begins January 26
Vacation Days January 1, February 12
Second Term Closes May 27

ATLANTA UNIVERSITY

BOARD OF TRUSTEES

WILL W. ALEXANDER, D.D., LL.D.	Atlanta, Ga.
WILLETTE RUTHERFORD BANKS, A.M.	Prairie View, Texas
MRS. ALICE B. COLEMAN	Boston, Mass.
JAMES H. DILLARD, LITT.D., LL.D., D.C.L.,	Charlottesville, Va.
JOHN HOPE, A.M., LL.D.	Atlanta, Ga.
WILLIAM TRAVERS JEROME, JR., A.B.	New York, N. Y.
JAMES WELDON JOHNSON, LITT.D	New York, N. Y.
JAMES M. NABRIT, D.D.	Atlanta, Ga.
FLORENCE M. READ, LITT.D.	Atlanta, Ga.
DEAN SAGE, LL.D.	New York, N. Y.
MRS. HATTIE RUTHERFORD WATSON, A.B.	Pine Bluff, Ark.
KENDALL WEISIGER, B.S.	Atlanta, Ga.

OFFICERS

DEAN SAGE	President
FLORENCE M. READ	Secretary and Assistant Treasurer
JOHN HOPE	Treasurer

EXECUTIVE COMMITTEE

DEAN SAGE
WILL W. ALEXANDER
JOHN HOPE
WILLIAM TRAVERS JEROME, JR.
JAMES WELDON JOHNSON
FLORENCE M. READ
KENDALL WEISIGER

FINANCE COMMITTEE

DEAN SAGE
WILLIAM TRAVERS JEROME, JR.
JOHN HOPE

ATLANTA UNIVERSITY LABORATORY SCHOOL

OFFICERS OF ADMINISTRATION

JOHN HOPE, A.M., L.L.D.	<i>President of the University</i>
JOHN P. WHITTAKER, A.M.	<i>Registrar of the University</i>
WILLIAM A. ROBINSON, A.M.	<i>Principal of Laboratory School</i>

TEACHERS IN LABORATORY HIGH SCHOOL

HALLIE MAE BEACHEM	<i>Librarian</i>
Diploma, Indiana State Library School; Student at Butler University, three years; Butler University, Summer, 1931.	
BEULAH LUCINDA BOLEY	<i>Biology and General Science</i>
B.S., Iowa Wesleyan College, 1926; Summer Session Iowa State Normal, 1920. Graduate Student, University of Iowa, 1930.	
MAUDESTINE M. DANGERFIELD	<i>Latin</i>
B.A., Claflin College; A.M., Columbia University, 1930.	
CONSTANCE DUPUY	<i>Physical Education</i>
Sargent School of Physical Education, 1926-27; Summer Session, Harvard Physical Education, 1929.	
ALMA CATHERINE FERGUSON	<i>Mathematics</i>
B.A., Spelman College, 1929; M.A., University of Wisconsin, 1931.	
ERNEST JACKSON HOOPER	<i>Industrial Art</i>
Diploma, Cheyney State Normal, Cheyney, Pa., 1920; B.S., Bradley Polytechnic Institute, 1930.	
CAMILLA HOWARD	<i>French</i>
A.B., Spelman College, 1927; Graduate Student, Middlebury College, 1929-30; L'Universite de Grenoble, Grenoble, France, Summer, 1930; Middlebury College, Summer, 1931.	
JOSEPH H. JENKINS, JR.	<i>English</i>
B.A., Hamilton College, 1928.	
MELVIN DOW KENNEDY	<i>History</i>
B.A., Clark University, 1929; A.M., 1930; Harvard University, Summer, 1931.	
LYDA HOYLE MCCREE	<i>Home Economics</i>
B.S., Spelman College, 1927; University of Chicago, Summer Terms 1928 and 1929.	
JULIA ELINOR PATE	<i>English</i>
A.B., Spelman College, 1929; Graduate Student, University of Chicago, 1929-30.	
LILLIAN EVELYN WEBSTER	<i>Music</i>
B.Mus., University of Kansas, 1928; University of Chicago, Summer, 1931.	

(TEACHERS FOR CHEMISTRY AND PHYSICS
TO BE SUPPLIED)

TEACHERS IN LABORATORY ELEMENTARY SCHOOL

- NELLIE M. ALEXANDER *Fifth Grade*
A.B., Illinois State Normal University, 1931.
- EVA MAE CROCKER *Third Grade*
Cheyney State Normal School, Cheyney, Pa., Summer, 1920; Central State Teachers College, Lock Haven, Pa., Summers, 1922, 1923; Hampton Institute, Summers 1924, 1925; Columbia University, Summer, 1928; Boston University, 1929-30.
- MRS. EVA KNOX EVANS *Kindergarten*
Diploma Baltimore Teachers Training School (now Maryland State Normal School), 1924.
- ETHLYNNE ELIZABETH HOLMES *Seventh Grade*
A.B., Atlanta University, 1927; Graduate Student, University of Pennsylvania, Summer, 1929.
- ELIZABETH ELAINE LEMON *Eighth Grade*
Normal Certificate, Atlanta University, 1923; B.S., Ball State Teachers College, Muncie, Ind., 1930, Summer, 1931.
- MRS. PAULINE MOORE *Second Grade*
A.B., Colorado State Teachers College, 1930.
- MRS. ESTHER JAMES REDDING *First Grade*
Certificate State Teachers College, West Chester, Pa., 1926; Diploma, 1928.
- RUTH SIMPKINS *Sixth Grade*
B.S., Wilberforce University, 1927; B.Ed., University of Cincinnati, 1930, Summer, 1931.

(TEACHER FOR FOURTH GRADE TO BE SUPPLIED)

PURPOSE AND ORGANIZATION

Atlanta University, as a part of its Department of Education, conducts a Laboratory School,—in two divisions,—the high school at Giles Hall on the Spelman campus, and the Oglethorpe elementary school on the University campus. Both schools are co-educational. The purpose of the Laboratory School is not primarily to give students in the Department of Education practice in teaching, but to provide them with an opportunity to observe good teaching and its results.

During the last three years, three private high schools in Atlanta have passed out of existence,—the academy at Morehouse College, Knowles High School at Atlanta University, and the Spelman High School department. If not exactly in place of these three schools, at least accommodating the students who might have gone to these schools, there has developed the Laboratory High School of Atlanta University, which is well equipped to care for both boys and girls. It is not the desire of the institution to have large numbers of students, but the school is prepared to accommodate three hundred boys and girls.

The principal of the Laboratory School is a man who has made an outstanding record in public school administration, and who as state supervisor of Negro education in North Carolina and as president of the National Association of Teachers in Colored Schools has contributed materially to the cause of Negro education throughout the country. There are also other men on the high school faculty. The boy attending the Atlanta University Laboratory High School comes in close contact with men who are leaders, who understand a boy's interests, and give him an opportunity to develop his individual powers in competition with other boys.

Spelman College co-operates with the University in providing residence for girls who live outside of Atlanta and wish to attend the high school. These resident students become a part of the college community and share in its privileges and responsibilities.

The Laboratory School is distinctly a part of the University system, an enterprise where there is a great deal of independence of thinking and planning, where it is possible in the best sense to make an experiment in education. The whole purpose of the University scheme is to prepare an adequate leadership, adequate not in reference to numbers, but in reference to quality and power of individual men and women. As a part of this university system the Laboratory School shares in the foundation of an enterprise that will make for better human living.

ADMISSION

Students desiring to enter the high school should send to the Registrar, Atlanta University, Atlanta, Georgia, for announcement and application blank. The blank should be filled out by the applicant himself and returned promptly. School transcripts are obtained with less delay if applications are received before school officials leave for their vacations. No student will be permitted to register unless he has first been accepted and has paid the entrance fee.

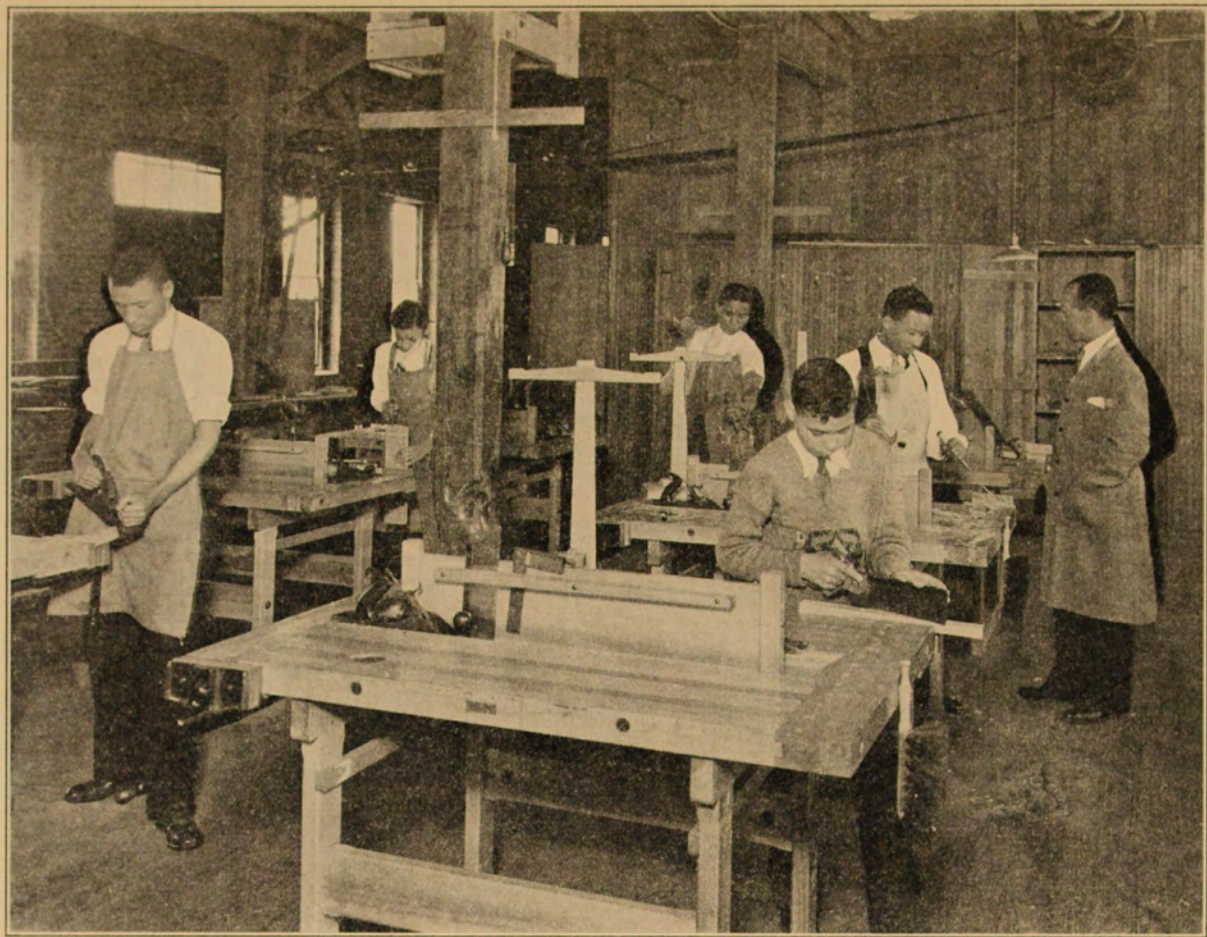
Students who expect to be in classes at the opening of school must register on the day specified in the calendar.

Applicants for admission to the high school transferring from non-accredited high schools or high schools accredited as Class 2 and below by their state departments and all students applying for entrance to Grade IX will be required to take entrance examinations. These examinations will be given in Giles Hall on September 18 and 19.

The candidate's credentials, mental and moral, as shown by his record in and out of school and the recommendations of persons to whom he has referred, are important factors. Personal interviews are requested wherever possible. Satisfactory evidence of earnestness of purpose and of a dominant interest in the serious work of the high school is a pre-requisite to admission.

The High School reserves the right to require at any time the withdrawal of students who do not maintain the required standards in scholarship and of those who do not give evidence of entire sympathy with the ideals of the institution. Those who are unprepared to accept this condition should not apply for admission.

A physical examination is required of all applicants and the institution reserves the right to decline to admit or to dismiss at any time after admission any student who, in the judgment of the physician, could not remain without danger to his own health or to the health of others.



BOYS' WORKSHOP

FACILITIES

The High School is housed on Spelman College campus in Giles Hall, which was remodeled and newly equipped in 1930 at a cost of approximately \$30,000. The building contains well-lighted, fully-equipped laboratories; library and reading room with magazines and newspapers; home economics laboratories with unit kitchens; cafeteria, where hot lunches are served for the convenience of day students and faculty members; and attractive classrooms.

Knowles Building, on the Atlanta University campus, is available for the use of high school boys. Machinery for shop work was installed in 1930, and projects handled by the high school boys in 1930-31 show promise of developing an excellent department. Boys' club work is encouraged, and teams are organized for golf, basketball and other contests.

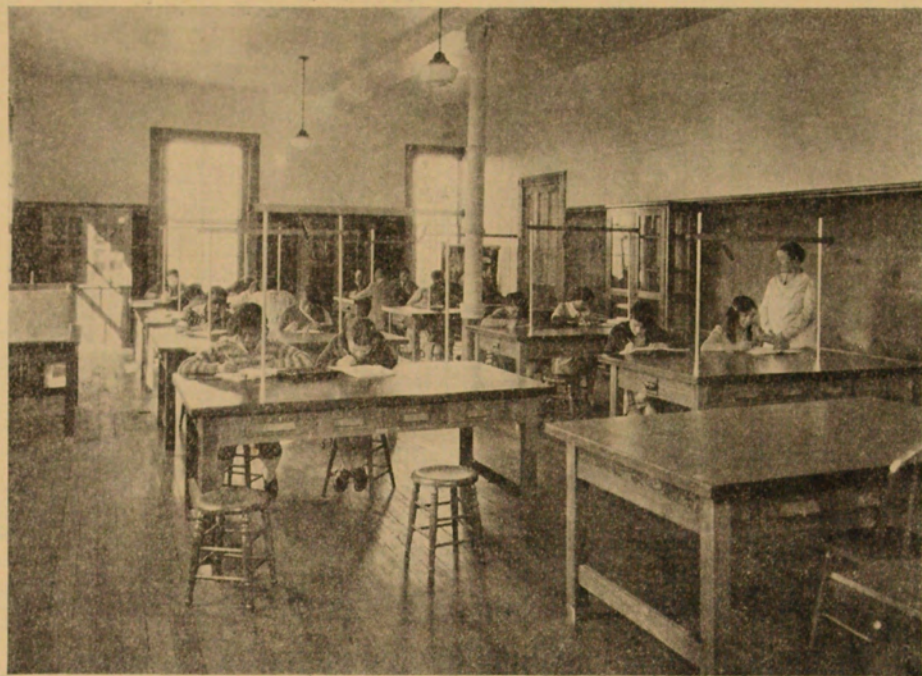
Facilities for athletics and physical education include, for boys, the Atlanta University gymnasium, athletic field and tennis courts; for girls, the gymnasium, track and tennis courts at Spelman College.

Health of the students is carefully guarded. The infirmary on the Spelman campus, with two trained nurses and visiting physicians, serves all students and faculty members of Atlanta University, Morehouse College and Spelman College. Medical examinations are given, corrective work arranged for wherever necessary, and precautions taken to keep illness at a minimum.

With the construction of the new Atlanta University Library, students of all the affiliated schools will have outstanding library advantages. A large room in the basement of the Atlanta University (Graves) Library has been repainted and is open to the children of Oglethorpe School for their own library from 2:30 to 3:00 o'clock every school day. A story hour is held each week.

Wherever possible, arrangements are made for high school students to attend art exhibits, entertainments, lectures by speakers of note, concerts, recitals and other activities at Morehouse College, Spelman College, and Atlanta University.

Resident high school students share in the religious activities of the Spelman College community, which include Christian Endeavor, Sunday School and Sunday School Teacher Training, vesper services and prayer meetings.



LABORATORY—GILES HALL

Tuition is due in two payments—one-half when entering and one-half at the beginning of the second semester.

Entrance fees will not be refunded if students fail to enter unless notice is received by September 10, 1931. Rooms for students residing at Spelman College will not be held later than September 20, 1931, except in case of sickness and then notice must be sent in advance.

The charge for board, which includes board, room, laundry, heat, and light, is \$225.00. The institution will launder for each student a limited number of articles, for which the total charge does not exceed 60 cents per week. Payments for board, room, and laundry are made in eight installments, but cover nine months. The amounts are due as follows: \$25.00 in September, January and April, and \$30.00 in October, November, December, February, and March.

No deduction will be made in the charge for board for any fraction of a week, nor for Christmas nor for opening and closing weeks.

Checks, drafts, money orders, in payment of entrance fees, tuition or music should be made payable to Atlanta University. Checks, drafts, money orders for board, entertainment, gymnasium, for students residing at Spelman College should be made payable to Spelman College and when sent by mail should be addressed to the Treasurer, Spelman College, Atlanta, Georgia.

Students may not elect music for a shorter time than one semester. Bills for music are payable in advance.

No student will receive his diploma until all his school bills are paid.

Students may leave cash on deposit at the Treasurer's office for safekeeping.

A discount of \$10 will be allowed if the board and tuition charges for the entire year are paid when entering.



OGLETHORPE GROUP

OGLETHORPE ELEMENTARY SCHOOL AND KINDERGARTEN

The elementary school under the Department of Education of Atlanta University is conducted at Oglethorpe School on the Atlanta University campus. The Oglethorpe building was renovated in 1930, and provision made to care adequately for 200 students.

The work at Oglethorpe begins with the kindergarten—the only one for Negro children in Atlanta—and continues through the eighth grade. Here, as in the high school, the purpose is not mainly to provide a practice school for students in education, but to conduct a model school where prospective teachers may observe the work of experts. Courses of study are approved, and students who complete the eighth grade at Oglethorpe are admitted to high school without examination.

Applications for admission should be sent to the Registrar of the University.

FEES

The tuition charge for the year is \$25.00 payable in two payments—\$15.00 on entrance and \$10.00 on or before Monday, January 25, 1932. This charge covers tuition and other expenses, including books, paper, pencils, etc.

Students of the Oglethorpe School may take private lessons in music from the teacher of music at the school.



KINDERGARTEN GROUP

