

THE SPELMAN
SPECIAL EDITION **SPOTLIGHT** Volume 47, Issue 5

The Voice of African-American Womanhood Since 1957

CONNECTING OUR PAST WITH OUR PRESENT
GALACTIC ASCENSION 2010

CONTRIBUTORS

Advisers Sylvia Maddox Renita Mathis

Editor-in-Chief Jasmine Leal-Taylor

Executive Editors Deaweh Benson Jordan Harris

Arts & Entertainment Editor Dejae Gillard-White

Fashion & Beauty Gabrielle Hamilton

The Forum Editors Stevi Darden Briana Haymon

Lifestyle Nicole Smith

News Editors Kirstin Evans Jelissa MooYin

Photography Editor Lea Scruggs

Managing Editor Kelly Harper

Copy Desk Natasha Abellard Brittany Fennell Passion Hemphill

Chief Layout Editor Kevin Reeves

Associate Layout Ashley Jones April Rushin

Business Manager Toni Cannady

Contributing Writer Ariel Smith

Contributing Photographers Kevin Reeves Eric Ross

THE SPELMAN SPOTLIGHT

350 Spelman Lane, SW

Campus Box #1234

Atlanta, GA 30314

Newsroom spelmanspotlight@gmail.com

Advertising advertise.spelmanspotlight@gmail.com

CONTENT

/ HOMECOMING 2010

- 4 Letter From The Editor
- 5 SGA Presidents Letter
- 6 Letter from Director of Alumni Affairs
- 7 Putting Spelman on the Map
- 8 Miss Spelman
- 10 Spelman Goes Global
- 11 A Day in the life of a Spelman
Woman
- 12 Serious About Service
- 14 Alumnae: Where Are They Now?
- 16 Alumnae to Student Converstaiion
- 17 Homecoming 2010

From Me to You

A Letter from the Editor

Welcome to the Spelman Spotlight's first ever Homecoming magazine. This magazine you are reading is proof of our hard work and determination to continually better the Spelman Spotlight.

For five decades the Spelman Spotlight has had the opportunity to serve as primary source of news for the Spelman community. We began in 1959, and the plan was simple; create a newspaper that would cater to all the different women at Spelman College and serve as a medium for self-expression that will continually inspire the woman at our institution.

Now, one year after our 50th anniversary we reflect on our success and improvement and have reinvented ourselves yet again, by creating our first Special Edition magazine. We chose Homecoming because there is no better time to show our alumni all of the progress that has occurred on campus and within the Spelman Spotlight.

What has inspired us to create this magazine, were all of the positive changes we saw in our community, that we wanted to share with our alumni. This issue aims to connect Spelman's past with its present. We have highlighted organizations on Spelman's campus that are dedicated to making a change, such as The Spelman College Student Philanthropy Council and Spelman's QEP.

In these pages, you will find an interview with the current and past Miss Spelman, along with other treats. Enjoy!



Greetings My Spelman Sisters,

On behalf of the Spelman Student Government Association (SSGA), it is an honor and privilege to welcome you to the SpelHouse Homecoming 2010. An immense amount of hard work and dedication has been deposited into making this homecoming memorable for both current students and alumnae of this prestigious institution. Here at Spelman College, we believe that it is our choice to change the world. Being an agent of change and progress requires an innovative mind, a preserving spirit, and an empathetic heart. Every day, the mind and heart of the Spelman woman is being fashioned to take the skills we have acquired within these gates and shape the very course of history. As we prepare to take part in this weeklong celebration, it is only fitting that we recognize the amazing strides that Spelman has taken to improving the academic and social experience for the woman of the African Diaspora. There are exciting changes and new additions that will preserve this sacred tradition and make more resolute our shared sisterhood.

One of Spelman's newest initiatives is the QEP, also known as the Quality Enhancement Plan. The QEP has set the aggressive goal of providing the opportunity for every Spelman student to have a global experience by 2015. The QEP was developed to make students more globally aware, to create a bridge between study-travel and academics and make diversity a practical part of our lives. Before we can change the world, we must be conscious of its problems, struggles, and growing need for interconnectedness and global unity. The SSGA is on the forefront, contributing to this admirable vision. We are currently planning a mission trip, for the spring semester, to an underdeveloped country that is in dire need of aid for women and children's health. It is our hope that the student body, faculty, staff, administration, trustees, and especially alumnae, would partner with us in pursuit of this unprecedented endeavor. Also, promoting diversity is among the highest priorities of the College. We are pleased to announce that for the first time, Spelman will be offering a sign language course to its students. Changing the world does not have to begin in a foreign country, rather it can begin with the disabled brother or sister who live in our own backyard.

As your Student Government Association President for the 2010-2011 academic year, I am working hard to make sure that the voice of the student body is heard. In accordance with the goal of SSGA, which is to unite our sisters, ensure that everyone is accountable, and connect with other campuses to elevate our Spelman experience, we have been successful thus far. As the women of Spelman are continuing to promote excellence, this academic year will definitely be a success.

Come out and support the various campus organizations that have contributed to making this year's homecoming festivities a success.

Our whole school for christ,

Iva Stewart- Barre, C' 2011

Spelman Student Government Association President 2010-2011





October 14, 2010

Welcome to Atlanta, Georgia!

We are so delighted to have you and your classmates join us on this joyous weekend to celebrate **Spelman - Morehouse Homecoming 2010** *"the ultimate homecoming experience"*. Spanning over an entire week, Homecoming is a celebration of sisterhood, our rich history and promising future. We hope you have a wonderful time, and that you will participate in the variety of activities taking place on and off our campus.

Don't forget to stop by the Welcome Home Alumnae Check-in/Market Friday on the upper concourse of Manley Center on Friday afternoon and the Alumnae Affairs tent in the Tailgate area on Saturday to meet and connect with Spelman sisters, students and staff. Remember to update your personal information and receive your homecoming souvenirs. Also we will be happy to receive your Homecoming gift to the Annual Fund so we can continue to support our current student body in their educational endeavors.

Finally, Atlanta is one of the fastest growing cities in the South and offers a variety of landmarks, arts and culture, entertainment, shopping and exceptional dining experiences throughout the city. The TWELVE, Centennial Park and W Atlanta, Downtown are our host hotels. We invite you to join us for the **Spelman - Morehouse** Alumni Mixer 5:00 – 10:00PM on Friday evening. Check with the concierge desk at either hotel to get updates on restaurant information and events taking place in the city.

On behalf of the entire **Spelman** College community, please accept our heartfelt appreciation for sating connected to your alma mater. We're glad you've returned home!

In the spirit of Sisterhood,

Sharon Owens, C'76

Director of Alumnae Affairs

Putting Spelman on the

MAP

Lakin I. Starling

We are only three months into the fall semester yet some prominent and impressive guests have come to Spelman College and shared their respective talents and wisdom with the student body.

Holding the title as the #1 Historically Black College or University, Spelman produces many influential leaders and attracts some global leaders as well. For years, Spelman has been a main attraction because of its supreme scholastic standing and well known reputation.

To kick-off the semester hip-hop artist Wale came as the special guest artist, for P.U.L.S.E's Welcome Back Jam and performed a concert for students.

Wale is an up and coming hip-hop artist whose debut album *Attention Deficit*, and newest mixtape *More About Nothing* have produced major hits in the mainstream and underground music world. Although the student response was not unanimous in regards to the quality of Wale's performance, but his presence was indeed a treat.

Wale's appearance and show

was a great introduction of the social events that take place in the Atlanta University Center. The concert started the year off on a positive note and ultimately reunited many students.

In mid-September, authors and feminists Gloria Steinem and Bell Hooks held an event headed by the women's studies department at Spelman. They spoke to students about their lives and the importance and relevance of feminism and awareness.

Gloria Steinem is an American feminist, journalist and social and political activist who is an active leader in the women's rights movement. She has been recognized nationwide as the leader of and media spokeswoman for the Women's Liberation Movement during the late 1960s and 1970s.

Bell Hooks is deemed one of the most prominent black woman intellectuals and is a self-proclaimed revolutionary. She is a prolific theorist and has written many books about her perspectives on race along with her identity as a black woman.

The two were a comical and intelligent pair. Both Steinem and Hooks have been friends throughout their reign in the liberation movements and pushes for equality amongst women and those in the black race.

At the end of September, Tony and Grammy Award Winning singer and actress, Jennifer Holliday, premiered as a Convocation guest.

Holliday spoke about her days on Broadway and what it was like to "pass the crown down temporarily," to the newest Dreamgirl, Jennifer Hudson. Holliday sounded very protective over her craft, name and reputation throughout the entire interview.

"I have to be good at what I do. That's what I built my whole career on," stated Holliday. "There is something inside of you that says you are built to be the best," which illustrates the fight inside of her and her optimism about the adversity she has faced thus far.

Miss Spelman

Past and Present

Deaweh Benson

She is cherished. She is celebrated. She is the face of the #1 Historically Black College in America. She is Miss Spelman.

Miss Spelman is arguably the highest student position available at Spelman College. Though the position has been in existence for years, the roles and responsibilities have changed remarkably.

The following interview captures such changes through a span as short as ten years. This dialogue takes place between current Miss Spelman, Meighan Parker, and the Miss Spelman of 2000-2001, Leah Jackson.

What does it mean to be Miss Spelman?

(LJ) Miss Spelman is a representative of her institution and surrounding community. She serves as an example for current and future students. She is a servant.

(MP) I agree. Miss Spelman's primary role is to serve the community.

What challenges did you face as Miss Spelman?

(LJ) Back then, Miss Spelman was responsible for leading the college in community service, and getting students engaged was always a challenge.

What challenges do you now face as Miss Spelman?

(MP) The challenge is exceeding

the expectations of our peers. Many believe that the Miss Spelman court is not active, but we are trying to become more visible. We recently held the Miss Spelman Lock-In Pajama Jam. This event was catered to the first years to break down barriers and show them we are approachable.

What inspired you to run for Miss Spelman?

(LJ) I have loved Spelman for as long as I can remember. My mother went to Spelman and my father went to Morehouse. When I got here, [Spelman] reached my expectations. I thought Spelman was the best thing since sliced bread, so I knew I would not represent any other school.

(MP) I decided to run for Miss Spelman my freshman year. I knew all along that I wanted to run.

I didn't exactly understand why [I wanted to run] until my mother passed the spring semester of my freshman year. It was then that I felt the sisterhood because faculty members and my peers reached out to me. At that point, I realized that I wanted to give back. If I were at any other institution I do not think that I would received the same support. I want to inspire others to know that no matter their circumstance, they can make a difference.

What was your platform when you were serving as Miss Spelman?

(LJ) It seemed like a mouthful back then! My platform was to ensure the revitalization of student life. When

I was here, things were focused on activities that were not fun.

[For that reason,] I started my pageant speech with a play on the Spelman hymn. I began, "Spelman thy name is wack, I want my money back."

I wanted to address the temperament of the student body. People were bored. Everyone had to go to some type of convocation. There was no cable or air. There was no such thing as Wi-Fi. Spelman was behind in technology. On top of that, we used to have parties in Lower Manley.

My platform was about creating different opportunities for Spelman women. There are different types of Spelman women with different shades of blue. We needed activities for the sorority girl and the athlete.

What is your current platform?

(MP) My platform is Be P.R.E.T.Y. It stands for the Positive Representations of Excellence and Talent in Young Women. It focuses on educating the Spelman community on the misconstrued images of women in the media. Every woman, regardless of ethnicity or background, has experienced lowered self-esteem as a result of media images. For example, as we near spring break, you can see students getting on crash diets. If everyone is not educated, we cannot solve the problem.

My other initiatives emphasize that there is beauty in the serving the community. I want to tell students

Hometown: Birmingham
Alabama

Major: Biology

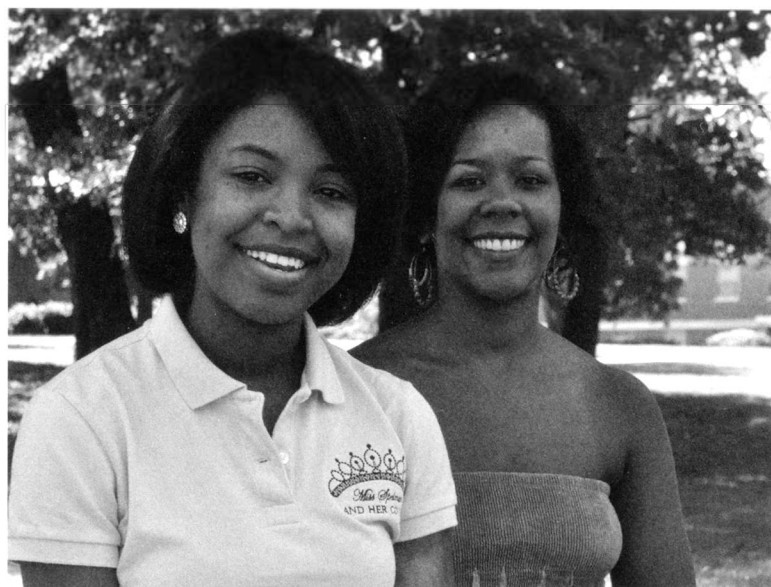
Activities: Rasing

Expectations Mentor,
Golden Key, Miss Spelman
Advisory Board, Howard
Hughes Medical Research

Institute

Interesting Fact:

Conducted research on
aging yeast cells



Leah Jackson

Hometown: Detroit,
Michigan

Major: Independent Major
with Public Policy Focus in
Child Advocacy

Activities: Dance Theatre,
Phi Beta Kappa, Delta,
Golden Key, SSGA Vice
President Advisor, Delta
Sigma Theta Sorority,
Incorporated

Interesting Fact: Graduated
Summa Cum Lade

that they are as beautiful as their actions. When you are committed to serving others, you will find the beauty in yourself.

How has Miss Spelman changed since you served?

(LJ) So much has changed with Miss Spelman. Then, all we had at Spelman was SSGA, Bonner, Delta, AKAs, and Zetas.

Miss Spelman was a member of SSGA. She even played a part of elections. Before, SSGA did everything except Bonner community service activities. We planned homecoming, parties, and more.

In addition to the pageant, Miss Spelman ran for the title the same way the campus president did. Students voted for Miss Spelman through regular elections. [With all of the activities we were involved in], there could be no one saying 'Where Is Miss Spelman?'

I wanted to move off campus that year, but decided not to. I wanted students to run into me into the café or even in the shower.

The pageant for Miss Spelman has also changed. There was no 'weeding' people out. Anyone who wanted to run could run. In fact, only students

voted at the pageant because there were no judges. We also had a pretty decent budget.

(MP) That has changed! We have to pay for our own wardrobe.

What was your greatest accomplishment during the role?

(L) My biggest accomplishment was when I rejected to participate in the Miss HBCU pageant. I decided to reject because I felt as though the pageant shifted the image of Miss Spelman to that of a beauty queen.

Another accomplishment was that I made Miss Spelman more tangible because I was just regular joe blow 'Leah.' I was intentional about becoming Greek after I pursued the crown. The Miss Spelman after me was not high profile in many student activities. I do not think the student body would have embraced her before me.

What is the greatest accomplishment you expect to have?

(MP) The greatest accomplishment I expect to have is to truly impact the student. I want to have great events, but I truly want to touch someone. If I do not do that, than I do not think I would have accomplished anything.

What advice do you have for Meighan?

(LJ) My advice for Meighan is to avoid falling under the weight of your crown. Who you are is good enough. Everything that is already inside of you is why you were chosen to be a representative of the college. Who you are is inspiration enough. I felt like I was [pressured] to be 'on' all the time. However, I decided to just be me. Sometimes, I threw on sweats and went to the cafeteria.

What are you doing now?

(LJ) I am practicing law. I am a technology and intellectual property attorney. I am currently joining a start-up firm with another African-American female.

I am also pursuing a Masters in Divinity at the McAfee School of Theology at Mercer University. I am one of the associate ministers at Ray of Hope Christian Church. I am also the Director of Sisters Chapel Movements of Praise.

What are your plans after Spelman?

(MJ) After I graduate I plan to do Teach for America. Afterwards, I plan to attend medical school in University of Alabama. I want to do family practice in a rural area.

Spelman Goes Global with Quality Enhancement Plan

Jelissa MooYin

Mass emails, flyers and the large boards dedicated to the new Quality Enhancement Plan are hard to miss as Spelman College makes way for its new initiative "Spelman Goes Global."

As a part of the accreditation process, Spelman College was charged to make groundbreaking plans to allow all Spelman women a chance to study abroad with a scholarship. With a 17 million dollar anonymous gift to fund such efforts, Spelman women will soon make an even larger mark on the international community. "With increased interest in foreign affairs more and more students are struggling to find scholarships that will fund their abroad experiences. It is imperative for the students to get this travel experience so that they can not only change the world but so that the world can enhance their inner growth as well," stated Standrin Francis, Spelman College Financial Aid Loan Coordinator.

The QEP is a part of the accreditation reaffirmation requirement from the Southern Association of Colleges and Schools. The QEP focuses on enhancing the quality of higher education by proposing a valuable student learning experience. SACS is the regional body for the accreditation of higher-education institutions in the South and requires that all member institutions comply with the standards contained in the "Principles of Accreditation: Foundations for Quality Enhancement" as well as policies of the Commission on Colleges.

Spelman College has a long history of providing study abroad opportunities and hosting international students, beginning with the first Spelman student to travel abroad to the Congo, Nora Gordon, in 1889, and, in 1915, Flora Zeto, the first Congolese graduate from what was then Spelman

High School. The anonymous gift will go towards establishing the Gordon-Zeto Endowed Fund for International Initiatives named after the pioneering young women Nora Gordon and Flora Zeto.

As a part of the QEP, The Gordon-Zeto fund will allow students to study abroad with school funding, as well as, providing a pathway for international students to study at Spelman. "The 21st century transformation of the College includes not only sending our students out into the world, but welcoming students from other countries to Spelman," said Dr. Tatum Spelman College President. "The addition of students from Africa will serve to further educate and prepare the Spelman community for global engagement."

In order to spread awareness about the "Spelman Going Global" Quality Enhancement Plan, Spelman launched a video contest promoted around campus. Students were charged to express how global travel might change their life in the future or how it already impacted their life in a video. The video could only be submitted by current full-time students and could not be longer than four minutes. From that point, a group of judges chose three contestants' videos to be uploaded on the Spelman College Youtube Channel. On Oct. 1 the student with the most views by 1:45 pm would win an Ipad. Shanae Smith, Zaire Love and Elizabeth Smith, were announced as the winners of an Apple Ipad.

One of the winners, Zaire Love, was ecstatic to find out that she was awarded the Apple Ipad. Love, a junior Drama major with a minor in creative writing from Memphis, TN, was inspired to enter the contest for several reasons. "At first the Ipad was my initial reason for wanting to win the contest, but as I began to put all

the contents together to legitimately answer the question of why I wanted to go global, it became more personal," explained Love. Also, the QEP initiative has become an inspiration for her because she wants to be the first of her family to travel internationally and become globally conscious.

From Sept. 27- Oct. 1, Spelman launched a Spelman Going Global Week. The week included a variety of different on campus cultural events. The week also included several information sessions on the SACS visit and studying abroad. The latter of the week concluded with a passport fair, a lecture by Alonzo Fulgham and a polling game that quizzed the Spelman community about the QEP.

"We are excited about implementing the QEP, "Spelman Going Global" because it will support and enhance students study travel experiences," said Dr. Lilly McNair, associate provost of research and professor of psychology. Although exact dates of when the scholarships will be available are still undecided, the plan is to build a program so that the class of 2014 and onwards will all have an international experience before they graduate. "I am glad to see that Spelman College is taking an initiative to expand our global experiences so that we can impact the world around us," stated sophomore, Adrienne Porter.

"I think that the QEP program is a wonderful opportunity for young African-American women to become globally aware and bring back what they have learned to become diverse leaders," added junior, Chelsea Williams.



A Day in the Life of a Spelman Woman

Stevi Darden

While taking a stroll through Spelman College's campus, you will see beautiful gardens, hundreds of students and historic buildings. In fact, you might even be trampled by women in business suits, carrying briefcases. Describing the "Spelman Experience" is as difficult as stuffing fifteen outfits in a carry-on suitcase, because there are too many important things that are expected to fit into that limited space. With over one-hundred years of tradition, service and innovation, Spelman has produced some of the most influential women in the world. However, these recent years have brought a unique and powerful change to the experience that we call Spelman.

The First Year

On move-in day freshman year, new students slip out of cars, trucks and U-Hauls in a frenzy. For an entire week, these women are taught Spelman's traditions. They also form bonds with their residence halls and the new students at Morehouse College. But the most cherished traditions is the white dress ceremony which initiates the first-years into their four year journey at Spelman.

It is safe to say that a sense of pride is instilled and the ladies are ready to embrace the idea of sisterhood. Candice Shaw, a first-year from Brooklyn, New York stated, "Spelman helped me to meet new intelligent young women and learn more about myself each day."

Numerous Spelman women spend their first year trying to find their "niche." After exposure to the programs, clubs and social events on campus, first-years are usually excited to get started. Shaw, for example, is involved in the Howard-Harrell Hall stroll team as well as III Literati poetry club. Although this excitement and eager attitude

may seem nostalgic to the alumnae of Spelman, some aspects are new to the freshmen experience. African Diaspora and World, a year-long course that promotes critical thinking and self-awareness, is a mandatory class for all freshmen.

"My ADW course is definitely helping me to see a different perspective of our history," said Shaw, "It has given me undeniable proof that women were oppressed, and this course further proves black women are strong individuals."

The Sophomore Year

Sophomore year brings on a new aspect of the Spelman experience. The young women have ceased feeling like discomfited "rookies," but are not yet comfortable enough to declare themselves as upperclassmen. The struggle of balance that students undergo heavily contributes to this awkward year. Class, clubs, pageants and "Sophomore Assembly" often haunt sophomore students on their quest through the year.

"This sophomore year has been quite different. I'm taking all major classes. I work full-time. I am extremely busy and my plate is extremely full. So I have to balance my time a lot more," said Waltrice Patterson, a sophomore, from Atlanta. By the second year, a lot of students are hopeful to hone in on their particular interests and passions, "I was recently involved in the Omega Psi Phi Pageant. We practiced everyday at 6pm. At the end I won Miss Purple and Gold," continued Patterson.

The Junior Year

Arguably, junior year is the hardest year of college. During this year, three facts descend upon the junior class. One, excuses and explanations are completely benign to professors. Two, time

management is vital. Three, students begin to realize that they must prepare for the "real world." Some juniors, however, see a positive outlook on their third year as Spelman women.

Junior, Chelsea Williams takes complete advantage of her time with class, volunteering at Herndon Elementary School, and working at the Fine Arts Museum on campus. "For me, the biggest challenge is mixing school priorities with involvement in extracurricular activities. [Although] this is certainly a working challenge, I wouldn't trade it for anything," said Williams.

A "challenge" would be an understatement. With Williams' position on SSGA, leadership role in the Spelman Financial Literacy Team, tour presentations as a student ambassador, and involvement in Spelman Students in Free Enterprise, time is always of the essence.

Aside from the academic and networking aspects of junior year, a sense of self-actualization sets in. "Spelman has helped me appreciate myself as a Black woman while deepening my passion for community engagement," says Williams. "I am moved every time I sit back and think of how remarkable this institution is. I would trade Spelman for absolutely nothing in this world."

With influential speakers on campus and prominent alumnae, students are encouraged to become more active in their environment. Similarly, the rich history of Spelman College works as a catalyst for activism in the scholars.

"I hope to use the history and traditions of Spelman as a constant reminder of the ability and uniqueness of Black women and just how essential our perspectives are in all aspects of life," stated the optimistic

Continues p. 19»

A.C.T.S., Actively Changing Tomorrow through Service, has quickly become the largest community service organization on Spelman's campus. After being a Registered Student Organization on Spelman's campus for three years, A.C.T.S., have managed to charter three chapters at each institution in the Atlanta University, which has increased their membership.

Shirley Noel and Nakeita Stewart founded A.C.T.S in the spring of 2008, their goal was to create an organization that went above the average community service organization and to united the Atlanta University Center through service.

"When Nakeita and I started A.C.T.S., we wanted to be a resource for community service in the AUC. We wanted to unite the AUC through service. We wanted to tackle four issues; poverty, health disparities, education and civic engagement. I am extremely proud of A.C.T.S. We started off with less than 20 members, now have over 120 AUC wide. So it is definitely growing," stated Shirley Noel, second attendant to Miss Spelman and senior at Spelman College.

A.C.T.S. is different from the normal community service organization in many ways; the first is their uncommonly large initiatives. These range from visiting children in the Children's Hospital to AUC scholarship car washes. Some of their other events and initiatives include HIV testing, Bingo and Talent shows at local nursing homes and cleaning Spelman's adopted highway. One of their big initiatives are *For the Love*



Serious About Service

Nicole S. Smith

of the Community, in which they pick up trash in the West End the day before Valentine's Day, and another is *Swipe for a Cause* where students donate their cafeteria lunches, to the homeless. One of their biggest and most anticipated initiatives is *A.C.T.S. on Tour*.

"I love *A.C.T.S. on Tour*," exclaimed Noel.

Early in December A.C.T.S. members travel to high schools in Clayton County, and provide the students with workshops on the basic fundamentals that they may need once they graduate, to help them succeed in life. Topics such as time management, stress management, what are scholarships, what to wear to an interview, how to apply for college, what's the difference between a public and private institution and how to write a resume are a few of the workshop topics. One of the many advantages of *A.C.T.S. on Tour* is the direct and immediate impact these workshops have on the high school students.

"Hearing information from students who are young, active and resemble them, allowed the high school students to be more receptive to changing and thus far we know for sure that fifty students who weren't going to college at all, are enrolled in institutions," added Stewart.

"We went to North Clayton High School for *A.C.T.S. on Tour* and one of the girls actually applied to Spelman and we were able to help her out in terms of getting in, just unfortunately we couldn't help her out as far as funding. That was the sad part. The idea of someone who never even thought of going to school, then she said 'I would love to go to Spelman, especially

since you all came down here.' She got accepted, she just could not find the money for it," explained Noel.

A.C.T.S. requires their members to make the major commitment of attending at least three events monthly. This level of dedication from their members is another asset that sets A.C.T.S. apart from other community service organizations.

"Members of A.C.T.S. are passionate about service. They are passionate about what they do. There has never been a time when A.C.T.S. had to do something, be it the community service organization fair or freshman orientation and only one person showed up. I've never questioned why A.C.T.S. members are missing at events. They have always been there," explained A.C.T.S. advisor, Michelle Gunter.

"After freshmen year, I was tired of doing community service [projects] that really didn't spark my interest. Therefore, sophomore year, I decided that I wanted to join an organization that did constant community service and had a purpose. That decision led me to the A.C.T.S. family," states A.C.T.S. Spelman College chapter president, Ashley Lewis.

A.C.T.S. is selective about their membership selection and tests the commitment of their perspective members through a rigorous application process. Students must submit an application and the applications that are considered excellent are called to group interviews consisting of applicants from all three chapters. At the interviews applicants are asked to work in groups to construct skits and other various tasks in order to assess their ability to work with others. The

applicants, who survive the group interview, become A.C.T.S. members.

"We get feedback all the time saying 'why is this such a rigorous process? It is just community service.' But we don't see it as just community service. We see it as people influencing others and changing lives," said Stewart.

For these service driven students, it is all about affecting change in the community and its members. The members of A.C.T.S. are encouraged to create their own initiatives and events within the organizations four main objectives.

"Within the larger organization of A.C.T.S., each chapter does their own initiatives. Each year we have new executive board members and they bring their own ideas and I really encourage that. I think it's a great idea. There is no need for us to stick to the same thing every year. So if you have a great idea and it's feasible, it's something that we can do, it's logical, then let's do it," explained Gunter.

"I really push that other members' voices be heard. If you have an initiative, then let me know at least two months in advance. This gives our A.C.T.S. members leadership opportunities," ended Stewart.

A.C.T.S. is setting new standards and challenging its members to think outside of the box to better the community. In the future they not only hope to expand beyond the AUC to other institutions of higher learning. They will be accepting new members the start of spring semester and all service driven students in the AUC are welcome to apply.

Spelman College Alumnae

Where Are They Now?

by Harper



Kerri-Ann Thomas

Well-known for her petite stature and powerful personality, Kerri-Ann Thomas was heavily involved in extracurricular activities during her matriculation at Spelman College. As a recent graduate, Kerri-Ann appreciates her time spent at Spelman College.

As a psychology major with a philosophy minor, Kerri-Ann made a lasting mark on the Spelman community. As 2nd Attendant to Miss Spelman, Kerri-Ann used the platform, "A Choice to Change the World, Starting on Its Axis," which strived to allow inner-city students to virtually experience Spelman College.

Currently, Kerri-Ann is pursuing her Master's in Education at Columbia University's Teacher College in New York, on a full-tuition scholarship. She is also, writing, illustrating and publishing her first children's book, intended for release in March 2011. The untitled book centers on race and self-esteem, and is for children ages

7 to 12.

Kerri-Ann's motto is "Although you are a product of your environment, you do not have to be a duplicate of the majority." She believes that despite humble beginnings, anyone can pursue their dreams and break free from the confines of their environment.

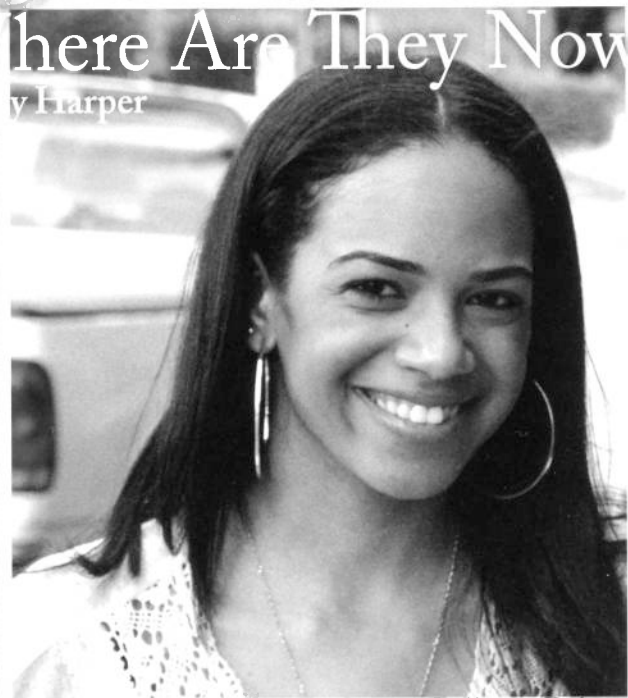
Kerri-Ann's long-term goal is to open a charter school in Brooklyn, New York by the age of 27.

Rebecca Clayton

The former Editor-in-Chief of the *Spelman Spotlight*, Rebecca Clayton, is becoming a marketing expert in New York City.

Throughout her matriculation, Clayton was a remarkable leader and student. She served as the president of Howard-Harrel Hall during her freshman year, and class president during her sophomore year. She also studied abroad in Florence, Italy, where she felt her "perspective on life" was irreversibly changed.

Despite being a history major while



at Spelman College, Rebecca opted to delve into varied activities and internships in order to find her niche.

Clayton is currently working for Ogilvy & Mather, in a rotational program where she gets to go through three to four different divisions of the company to see which facet that she would best be suited for. Ogilvy & Mather is an international advertising, marketing and public relations agency based in Manhattan.

Her advice to seniors preparing for life after Spelman is, "Appreciate your last year—fully embrace the Spelman experience, from the senior parties to the Market Fridays as well as the courses. Savor every moment, as it most likely will be the last time that you will be with all of your classmates and friends at the same time."

Miriam Archibong

A 2010 graduate of the Harvard University Graduate School of Education with a degree in Educational Policy and Management, Miriam Archibong is currently



teaching at Douglass High School in Atlanta, Georgia.

During her career at Spelman, Archibong served as an integral part of the Spelman Student Government Association, and was class president of both her freshman and sophomore years.

During her senior year, Miriam served as SSGA president and instituted the Dream Not Deferred campaign.

A corps member for Teach For America, Miriam is interested in working in educational policy and becoming a superintendent of urban public schools.

She shares words of wisdom with the current students at Spelman "You would be remiss if you didn't take advantage of every opportunity that Spelman has to offer. There is a wealth of opportunities that go untapped because so few people take ultimate advantage of them. Also, create a strong, viable network of Spelman sisters, as it will be invaluable once you graduate."

IF YOU ARE LOOKING FOR OPPORTUNITIES, WE HAVE OVER 100,000 MILES OF COASTLINE TO FIND THEM.

The College Student Pre-Commissioning Initiative puts you and your bank account in a much better place. You earn a monthly salary and have your last two years of tuition, fees and books paid for. The exclusive opportunities with the U.S. Coast Guard are as deep as the waters that surround our nation's coastline. To learn more and become more, jump in at gocoastguard.com/cspi or call 1-877-NOW-USCG to speak with a Coast Guard Recruiter.



Conversations with Alumnae

Dr. Natasha L. McPherson

Class of 2000

Gabrielle Hamilton

Dr. Natasha L. McPherson is a lecturer in the Spelman College History Department. She attended Emory University for her graduate studies, in which she wrote her dissertation titled *Creole Women of Color and the Making of a Community in Late 19th and Early 20th-Century New Orleans*. Dr. McPherson currently teaches four courses at Spelman College that include Survey of African American History and Topics: New Orleans-Big Easy.

Spelman Spotlight: When did you graduate from Spelman College?

McPherson: I am the class of 2000. So, it's really fascinating to be back here 10 years after the fact. It's wild to walk around campus because you all don't look the same because fashions have changed but Spelman women are still the same and it's so lovely. It really is. It's really nice to watch you guys, I have to say.

Spelman Spotlight: How are Spelman women the same?

McPherson: You guys are so smart. You're so sharp, witty, and funny. You guys care about the community and now Spelman is going green. Green wasn't very hip back 10 years ago. But, if you ever want to see how diverse black women are, come on Spelman's campus. It is so true. And so I'll walk pass a group of young ladies and they're talking. They're having the same conversations I used to have, school, teachers, boys, whatever, and it's just trippy to be back here. You guys are the same. Like I said, fashions have changed but the students are still the same. And there's something just beautiful about that, really.

Spelman Spotlight: What did you study at Spelman?

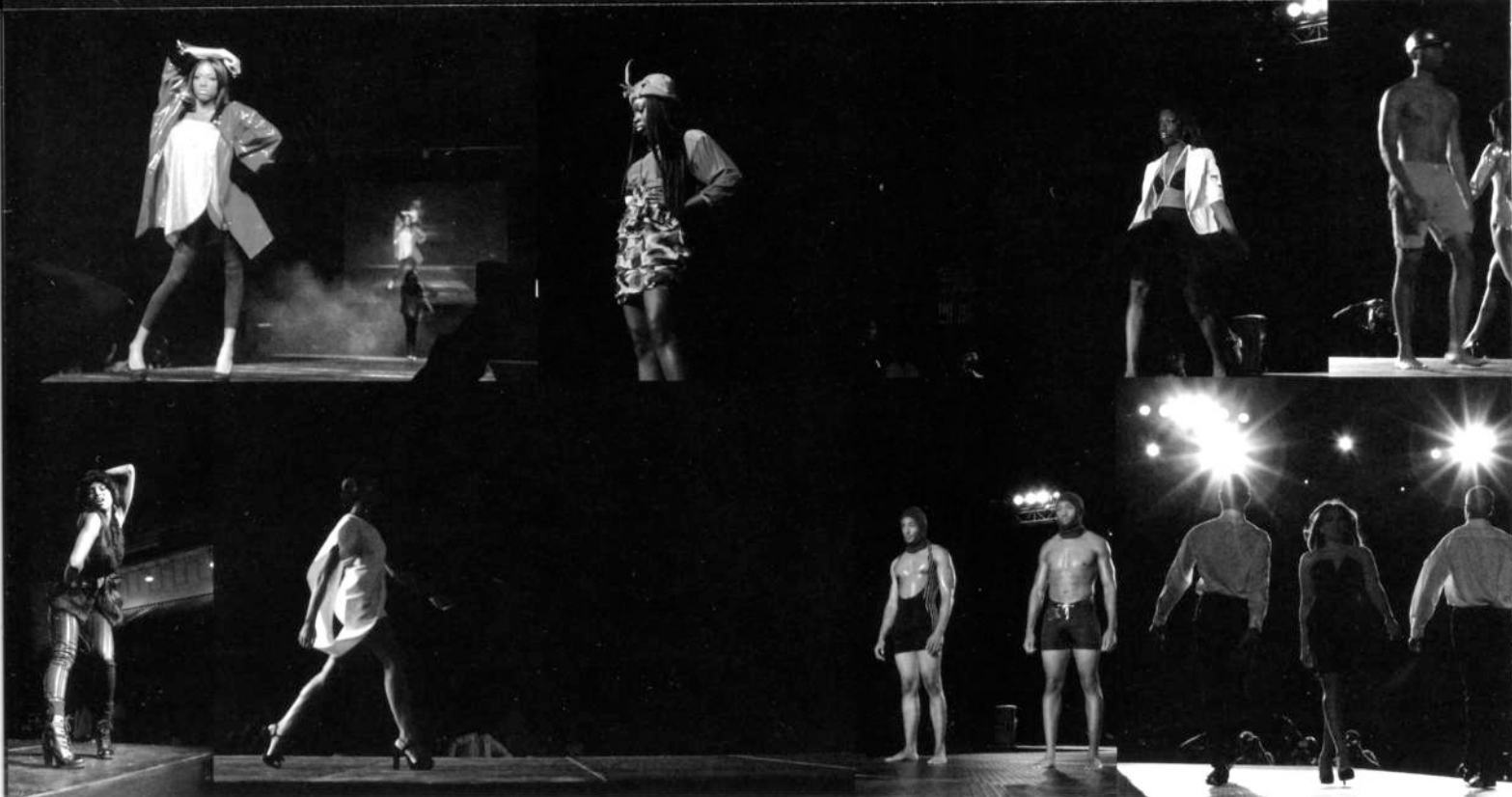
McPherson: I was actually Psychology and French. And then, I ended up in History, inevitably fumbling into History.

Spelman Spotlight: Where did you go to graduate school?



McPherson: Emory University. So, I went home to California for a little while and came back to Emory. My research is based in New Orleans. I do Creole women in New Orleans. Katrina had kind of set that back, a little bit. And, I went to D.C. and some things like that afterward. I moved here from New Orleans in January. I was teaching at Dillard with a Mellon fellowship. I was teaching at Dillard right after Katrina. I got to have a different black college experience different from my own, one in really unique circumstances, working in modular trailers in classrooms not fully electric. So, sometimes the lights would be on or off coming back after the storm. So, it's great to always be in a classroom here. I love having a classroom. I have a telephone, a printer. These are things I didn't have at Dillard. So, it's a little bit of a shock to be back in Atlanta, in a fully functioning city, in a fully functioning college. It's great. I can't complain. I'm really happy to be back at Spelman.

Continues p. 18»



HOMECOMING 2010

GALACTIC ASCENSION



Conversations with Alumnae

Spelman Spotlight: How has Spelman changed since you have graduated? Even conceptually, as we move forward with the QEP initiative?

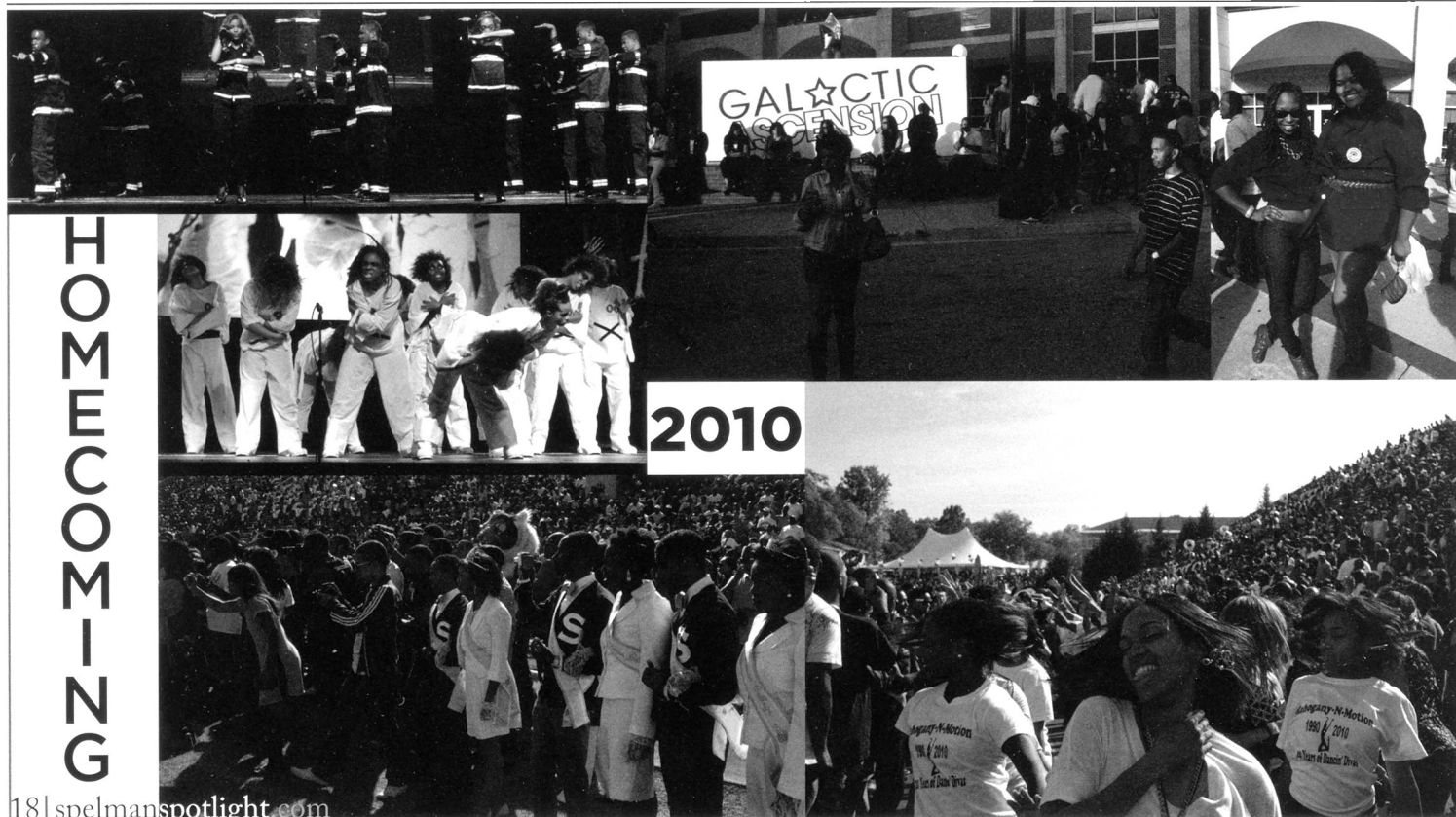
McPherson: I remember wanting to do study abroad when I was younger and just couldn't afford it. Every semester I was going to have to leave Spelman, so I sympathize with students who are like, "I'm just trying to get the tuition paid. I'm trying to stay." And that was my experience all the way through. It's great that Spelman is making strides to have these students have a global experience. Some young ladies definitely have been overseas and travelled prior to being at Spelman. But, a lot of young women, this is their first time ever going anywhere beyond Georgia or their own home states going out of the country. So, I am really happy to see the QEP. And I'm happy that the students know what it is. The students are far

more informed about the QEP than the faculty, if I can be honest. And how excited they are about getting these experiences in Europe, South America, and Asia. I don't know of any other black colleges in particular that are this ambitious. I did some research at Howard, so I have a little experience at some other schools. Spelman is Spelman and it's at the top of the game. It's wonderful. And again, going green I love that as well. Physically, I can see changes. There are buildings that weren't there before, the science building and the fancy suites. I remember freshmen year, I stayed in Packard Hall. That was a dorm. I had to go back in there to look at it as an administrative building. It is interesting. Things are nicer. The cafeteria is nicer. Things are nicer, but it still has the Spelman feel and that doesn't change. There is something essential about Spelman women. When you walk on this campus you feel it. 10 years can go by and you feel it. 20 years, I imagine, will go by and I will still feel that coming here. And,

I still don't know what the thing is but it's a thing and everybody feels it when they come here. And, it is great. It's one of those things that endures and it's about Spelman.

Spelman Spotlight: What influenced you to come back and teach at Spelman College?

McPherson: I often asked myself if I want to come back. I don't want to liken it to Disneyland, but if you have a certain experience that you idealize sometimes you don't want to come back and see the other side. But, to my surprise it's been wonderful. It really has been wonderful to come back as a faculty member as opposed to a student. My interaction with the students on this level has been amazing. You guys are so sharp, so interested, students come to class prepared, they ask me things I don't even know. They are challenging me every day, which is exciting as well. And, it's great to get into classroom discussion. You all have such good ideas and questions.



Day in the life: Spelman Woman Williams.

This year is also the launch of the Spelman Going Global (Quality Enhancement Programs) initiative. The slogan, "It's my choice, and I choose to change the world" is finally in full affect. The institution is fundraising and providing generous amounts of money to encourage students to travel.

Jamila Davis, a junior, political science major is studying abroad in Ghana this semester, "My study abroad experience in Ghana, West Africa is extremely beneficial because it is teaching me how to survive without the petty materialistic items that consume our every day American life." Throughout this experience, the Baltimore native is also gaining an understanding of social responsibility. "I also realize that there is so much to be done in developing countries and

there are more ways that our country can contribute," said Davis.

Senior Year

Senior year can be equated to climbing into the "career catapult" that will soon push them out into the world. To others, it is a time for reflection, appreciation, and a sense of well deserved dignity. Regardless of the outlook, one truth is undeniable for the graduating seniors of 2011, life begins in May. After the past three years of Spelhouse Homecoming, parties, probates, convocations, mock interviews, internships, tailgates and tests, the last year is a complete change in focus.

"Senior year is definitely overwhelming because we're entering the real world. We are going to be entering a crazy economy and job market," says DaniRae Baltzell.

The last year is not only scary;

it is a time of understanding and contentment as well. Because of their previous three years, Spelman seniors are able to not only discover their interests, but attempt to promote change.

Baltzell's involvement in S.K.I.R.T.S's mentoring program and international studies major (with a pre-med concentration) has helped as a stepping stone to advocacy. "Even though I have always focused on medicine, I learned that my heart is also in helping fight poverty, modern day slavery and child trafficking through education. Specifically teaching and volunteering in Africa."

A typical day in the life of a Spelman woman is hardly one-dimensional. In fact, the diversity of interests, goals and ethnicity make Spelman what it is. Ultimately, the day in the life of a Spelman woman can simply be described as remarkable.



Offering more than 30 unique degree or certificate options in medicine, nursing, allied health and biomedical research, Rush is a small, private university integrated within Rush University Medical Center.

Rush University is known for its practitioner-teacher model, translational research, nurturing academic environment and focus on community and global health.

Based on the most recent rankings of *U.S. News & World Report's* America's Best Graduate Schools, Rush University is the only ranked university with an exclusive health science focus.

Find out more at www.rushu.rush.edu/spelman

**FIND YOUR
RUSH.**

PUT YOUR PASSION INTO PRACTICE.

 **RUSH UNIVERSITY**

RUSH MEDICAL COLLEGE • COLLEGE OF NURSING • COLLEGE OF HEALTH SCIENCES • THE GRADUATE COLLEGE

Rush is a not-for-profit health care, education and research enterprise comprising Rush University Medical Center, Rush University, Rush Oak Park Hospital and Rush Health.

