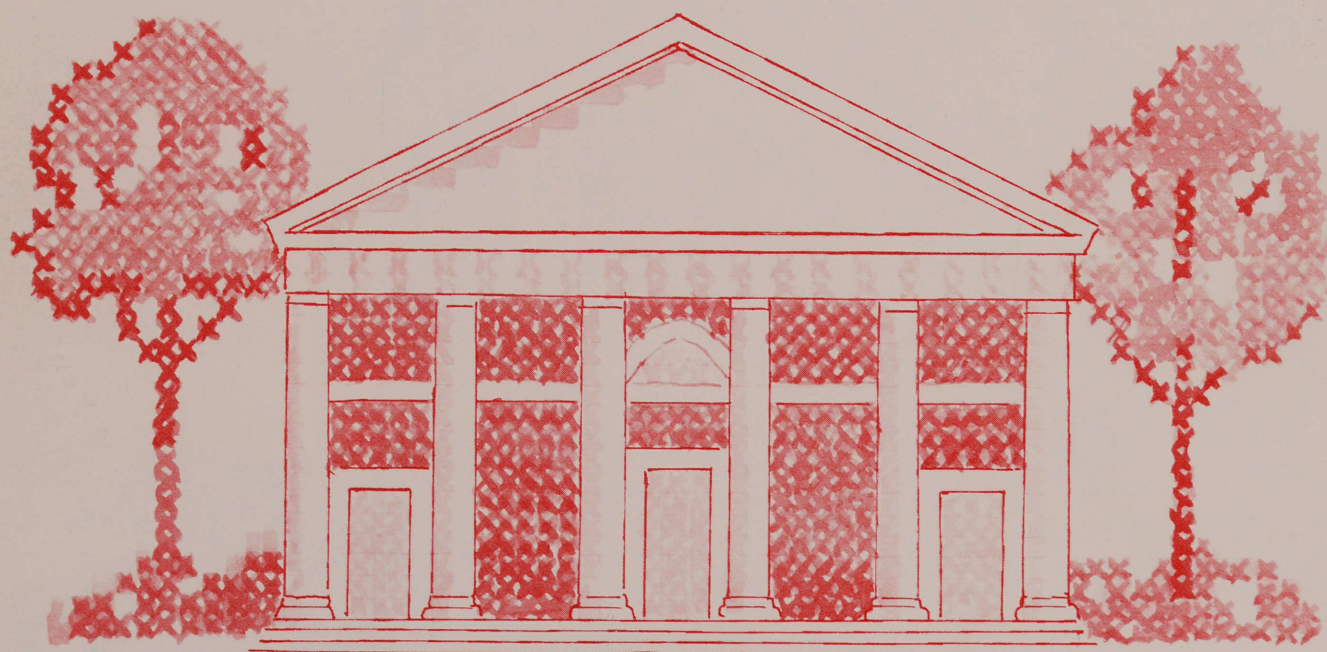


Spelman Messenger

WINTER 1982
Vol. 97, No. 4



HONORS
ISSUE

HOME SWEET SPELTMAN

HONORS ISSUE

*"Spelman, thy name we praise,"
Standards and honor raise . . ."*

The Spelman Hymn
Eddye Money Shivery (C'34)

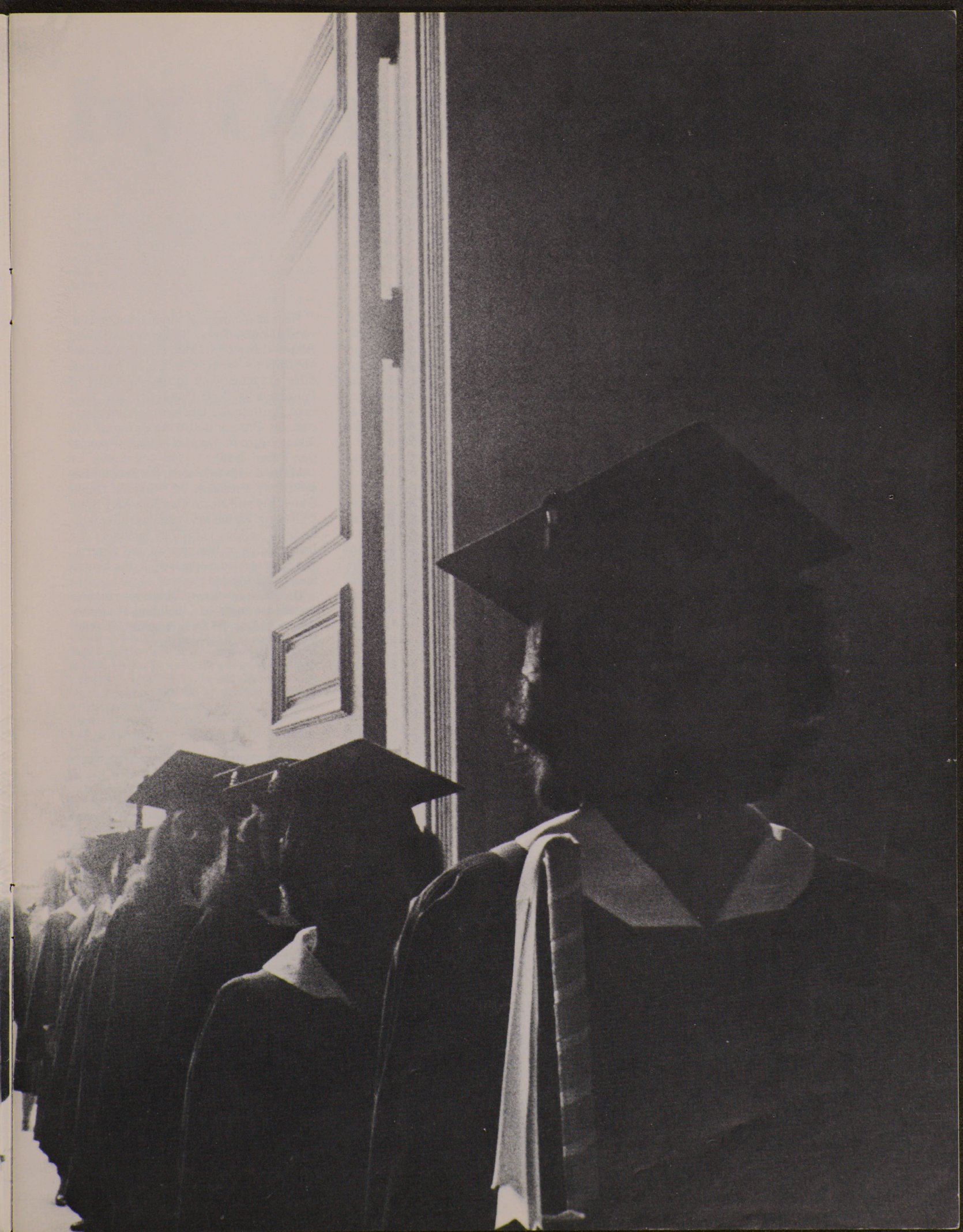
Contents of Honor

Baccalaureate	2
Ivy Oration	3
Centennial Commencement	4
Honor Roll 1981	8
Scholarships	23

EDITORIAL STAFF

Jo Moore Stewart, Editor; Pearline Adamson Davis, Alumnae Editor; Kimberly G. McElroy, Associate Editor; Christopher Reynolds, Assistant Technical Editor

Spelman Messenger, founded 1885, published by Spelman College, 350 Spelman Lane, S.W., Atlanta, Georgia 30314, Fall, Winter, Spring and Summer: The *Spelman Messenger* is sent free of charge to alumnae and friends of the College. Sample copies will be mailed free to interested persons. Recipients wishing to change the address to which the *Messenger* is sent should notify the editor, giving both old and new addresses. Annual subscription (four issues): \$2.00. Second class postage paid at Atlanta, Georgia. Publication No. 510240.



Baccalaureate:

A Time To Honor A Compassionate God

The Centennial Class of Spelman College held Baccalaureate Services on May 10th in Sisters Chapel. Dr. Samuel D. Proctor addressed Spelman's Centennial graduating class of 250 students. His sermon title was *The Rediscovery of Human Compassion*. "We need the compassion of Jesus," Dr. Proctor told Spelman's Baccalaureate audience. "We are in trouble, in the streets and in the White House," he said. He pointed out that all suffering no doubt has some cause, and every condition has some antecedents. "We *should* be about looking for causes and reasons," he continued, "but the issue of compassion has to do with how much you care about people in their *present* situation. And we have grown too stone-hearted to care."

However, Dr. Proctor concluded that "We have no ideology to which we are sworn, just faith in the God of our salvation. And no one has traveled this road before us, so, let us be a people of com-

passion and keep our heads and God's unfailing hand and who knows?" He added, "We may *be* the remnant to save this land of ours . . . And, a thousand years from now, when unborn generations ask, what happened to those 20 slaves who landed at Jamestown in 1619? They will answer that they are those who have *overcome*; whose garments are washed in the blood of the Lamb; they came through fiery trails, and by faith they sojourned in the land of promise, as in a *strange* land. But they never ceased to look for a city with foundations, whose builder and maker is God. And God is not ashamed to be called their God, for He *has* prepared for them a city."

Dr. Proctor, a native Virginian, holds the position of Professor of Education in the Graduate School of Education (MLK Memorial Chair) at Rutgers University in New Brunswick, New Jersey as well as serving as senior minister of the Abyssinian Baptist Church in New York City.

He is an alumnus of Virginia Union University (1942), Crozer Seminary (1945), and Boston University (1950), earning a doctorate from the latter in ethics. He has done other graduate work at the University of Pennsylvania, Yale University, and Harvard Institute for University Administration. Dr. Proctor is also the author of *The Young Negro in America 1960-80* (Association Press, 1966).

Married with four sons, Dr. Proctor has served as President of Virginia Union University and North Carolina A&T State University. He has held administrative positions in various capacities including the Peace Corps in Washington and Nigeria, and has traveled extensively in the United States and abroad.

Dr. Proctor's list of achievements and awards are numerous, including Honorary Doctorate Degrees from Atlanta University and fourteen other colleges.



Prior to giving Spelman seniors his Baccalaureate sermon, Dr. Samuel Dewitt Proctor (left) visits with Mrs. Coretta Scott King and President Donald M. Stewart on the porch of Reynolds Cottage.

BACCALAUREATE SERVICE

SPELMAN COLLEGE
SISTERS CHAPEL

SUNDAY, MAY 10, 1981
THREE O'CLOCK IN THE AFTERNOON

Dr. Donald Mitchell Stewart, *President*
Presiding

Processional—Trumpet Tune G. Teleman
Prelude—Cantabile Dr. Joyce F. Johnson, College Organist C. Franck

The Occasion President Donald Mitchell Stewart

Hymn—God of Our Fathers Warren

God of our fathers, whose almighty hand Leads forth in beauty all the starry band Of shining worlds in splendor through the skies. Our grateful songs before thy throne arise. Thy love divine hath led us in the past. In this free land by thee our lot is cast: Be thou our ruler, guardian, guide and stay. Thy word our law, thy paths our chosen way.	From war's alarms, from deadly pestilence, Be thy strong arm our ever sure defense; Thy true religion in our hearts increase; Thy bounteous goodness nourish us in peace. Refresh thy people on their toilsome way, Lead us from night to never ending day; Fill all our lives with love and grace divine. And glory, loud and praise be ever thine.
--	---

Scripture Reading Miss Cynthia Jackson
President, Senior Class

Prayer Dr. Rita Dixon
Staff Associate, The Presbyterian Church, U. S.

Music—Sanctus, From *Saint Cecilia Mass* Charles Gounod
The Spelman College Glee Club
Miss Princess M. Wright, *Student Conductor*
Laura English-Robinson, '69, *Soloist*

Introduction of Speaker President Donald Mitchell Stewart

Sermon Dr. Samuel Dewitt Proctor
Senior Minister, The Abyssinian Baptist Church
New York City

Music—The Omnipotence Franz Schubert
The Spelman College Glee Club

Benediction Dr. Norman M. Rates
College Minister

Recessional—Marche de Fête E. Gignou
Dr. Joyce F. Johnson, *College Organist*

Ivy Oration

Tanya Maria Trippett
Valedictorian 1981

"I am the true vine and my Father is the gardener. Remain united to me, and I will remain united to you. A branch cannot bear fruit by itself; it can do so only if it remains in the vine. In the same way you cannot bear fruit unless you remain in me."

John 15:1,4
Today's English Version

At such a time as this — the Centennial Birthday of Spelman College — we, the class of 1981 occupy a position of honor and distinction as a graduating class. It is a unique position in that the Centennial class represents the link between the rich past and the hopeful future of Spelman College. We stand on the threshold between a first century of achievement and a second century of progress. It is a position that carries with it a great responsibility. We have lived for the past four years on the achievements of the past; now we must prepare the way for a new century to thrive and grow. In order to contribute to the future, I deem it only fitting and proper that we examine our lives to determine from whence we have come, where we are, and where we are going. I can find no better illustration of our life than the climbing ivy vine. The ivy has long been respected as the symbol for academic pursuit.

We, the Centennial class, developed from the seeds of a strong vine. This vine was made up of many branches of black women's lives, who valued an education and used it to achieve. The origin of this vine initially appears to be hard to find, for the vine has flourished to inundate a century of history. If you ask alumnae from the past century, they will tell you that the origin or true vine of this historical plant was from an eternal source — the Spirit of God. The Spirit of God has served as the mainstay and strength in the lives of many black women. As a result of abiding in God, they were able to scale to new heights of achievement and intellectual growth. The labors of these women have not been in vain. For through their triumphs, trials and tribulations, these women have cultivated an environment conducive for other generations to grow. In a nature characteristic to ivy when it drops its seeds in the soil where it is growing, we, their fruits, have been placed where we are today.

In our years at Spelman, we have experienced the process of new growth from an old vine. This process, not unlike the growth cycle of ivy, consisted of three phases — sleeping, creeping, and leaping. The success and value of what we have learned and retained through this process will determine the survivability of our vine.

As we entered Spelman, we entered the first and most critical stage of development — dormancy. Progress at this time seemed slow and painstaking. Those who observed us may have thought we were sleeping. To many of us, when results were not readily seen in beginning courses such as Freshman English, General Biology, and Pre-Calculus, we wondered if our growth had been stunted. We were not sleeping, nor was our growth impeded. As new growth, we have used this period to its fullest by drawing upon the knowledge and tradition of a century of achievement in order to build a stable foundation upon which to grow. Nourished by the essential qualities of direction, perseverance, and en-

durance, we progressed to the stage of creeping.

Through the path of countless women who have paved the way, we have been guided in a predetermined direction. Though our path has sometimes appeared as aimless as the ivy plant, our course has exhibited direction — one direction — upward. Through our various areas of specialization, we have grown to newer realizations and higher plateaus of knowledge.

Perseverance has been the means by which we have been able to follow this upward path. Clinging as ivy does to smooth surfaces with its many rootlets, we have clung to the hopes and dreams of greatness. With our course and direction set, we have developed an attitude of determination and steadfastness.

The road upward has never been the easy one.

the areas of medicine, law, education, science and technology, and in many other disciplines. Many of us have ideas and dreams about what the future will entail, but no one can accurately predict where each member of the class of 1981 will be ten years from now. Many of us have notions of the level of achievement we may attain, but no one can envision the hardships, the sacrifices, and the defeats required for the accomplishment of greatness. We only know that we are journeying higher.

Graduation is a joyous time as well as a difficult time for all of us. For amid the festivities, the uncertainty of the future and our contribution to it raises doubts and fears of how or whether we will even reach our destination. My advice to my sisters in the class of 1981 is do not



*Tanya Trippett (right), the fifth generation of her family to graduate from Spelman College, proudly holds the book **Spelman: A Centennial Celebration**. The book features Tanya's great grandmother Frankie Quarles on the cover. Miss Trippett brought her family honor by becoming the valedictorian of the Centennial Class of 1981. Sharing the happy moment are her mother (left), Gertrude Yvonne Ketchum Trippett (C'52) and her grandmother Gertrude Emily Foster (center) (C'25).*

Through endurance, we have gained the stamina to continue to grow undaunted. In the face of obstacles, we have learned like ivy to grow around them. Despite what appeared to be insurmountable obstacles, whether academic, financial, or personal, we, the members of the Centennial class, have overcome them. We have closed the first Century of achievement by black women by achieving. We have left our marks on Spelman College in the classroom, the student government association, the community, and the world.

The results of our successes have enabled us to emerge into our final and perhaps longest phase of growth — leaping. Graduation denotes the transition into this phase. Beyond graduation, each of us will grow to the achievement of higher heights than ever before conceived of in

fear or worry. The way has already been revealed to us by history. For we have but to recall the strength and mainstay of the generations from which we have come to reach the point where we are today. Time has not changed the true vine. The true vine is still the Spirit of God. To survive the storms of time and to flourish, we must each seek to abide in God, the source of all wisdom and knowledge. Then and only then can we determine where we are going, and scale to the highest height.

"I am the vine, you are the branches. Whoever remains in me, and I in him, will bear much fruit; for you can do nothing without me."

John 15:5
Today's English Version

Congresswoman Cardiss Collins:

“ . . . AND TIMES WERE BAD!”

Editor's Note: The following are excerpts from the Centennial Commencement Address by Congresswoman Cardiss Collins, presented to Spelman College on May 17, 1981.

President Stewart, members of the faculty, graduates and their families, ladies and gentlemen:

Please allow me to express my appreciation for the very deep honor that you have conferred upon me.

I am proud as a Black American to come here to Spelman — this majestic institution with its long standing tradition of providing education of the highest quality for black women — and to share the joy of the Class of 1981.

You, the Class of 1981, are special. You are graduates of Spelman's Centennial Class. You have the right to be proud of yourselves — of what you have academically accomplished. . . .

Now whether I look it or not, I'm not *quite* as old as Mrs. Annie Alexander! But, I have come down life's road a fairly long way.

I know where some of the rough spots are. I've seen a lot of wrecks, and I've passed by many who were wiser travelers.

Now you are beginning your trip, and I have come here from our Nation's Capitol to tell you where some of the potholes have been. I want you to be on the lookout for them because I care about you, and I want you to take a detour around danger, to build bridges over troubled waters.

I want you to remember the things we talk about today because they have and will affect the quality of your lives — and because you, our new leaders, will certainly

affect mine.

One hundred years! That's a long time. It's a century . . . five score . . . four generations . . . ten decades! Yesterday while enroute here I tried to define what a century really is. What does a century feel like? How can we grasp its magnitude . . . its essence in time and space?

Perhaps we can best do so by envisioning America as it was when Spelman was first established. By leafing through the Sears Catalog of 1905-1910, I learned that a four-burner gas stove — a real luxury — cost less than \$37 . . . ladies 14-carat gold necklaces were only \$14.88, and dresses were sold by the bolt.

The May 7, 1881, Atlanta newspaper, *Daily Constitution*, carried stories on the front page about the work that had begun on *The Great Cotton Exposition* and news from London.

An interesting article in a Louisville, Kentucky, newspaper of September 26, 1881, read:

“There is a place in Georgia where there are four white schools and one colored school. The school fund will only pay seventy cents per scholar per month. The whites are only using the seventy cents, but the colored people have gone down into their pockets and made up money enough to pay one dollar per scholar per month. Don't say that the colored people do not appreciate education.”

I couldn't help but wonder whether that place wasn't Atlanta, and whether that school wasn't Spelman.

Mrs. Alexander gave us *first-hand* information last December when she said that 100 years ago, when Spelman became the reality of a dream, blacks “were just 20 years away from slavery, just turned loose without help from anywhere.”

TIMES WERE BAD!

Those 20 years must have been unbelievably difficult. The world must have seemed complex and frightening. But during that brief interval from Emancipation until 1881, we again proved our ability to overcome almost insurmountable obstacles.

History tells us that by 1881, with God's help, things were looking up. Some Negroes had become educated, some had land and were prospering. Some had attained real stature among both blacks and whites.

And of more importance, Negroes could vote, could hold public office . . . could help determine their own destiny.

About 20 had been or were serving in the U.S. House of Representatives, and two — Hiram Revels and B.K. Bruce — had served in the Senate.

And we had hope . . . and optimism. In a real sense, we were building bridges from illiteracy to education, from poverty to plenty, from dependency to independence.

Then along came the Confederate Democrats, the brave men who hid themselves in white hoods and long dresses, the passage of Jim Crow Laws in state legislatures, the withdrawal of Federal Troops, and the resultant segregation of the black man.

Negroes were reenslaved. Dehumanized. Prevented from earning a decent living, prevented from entering public facilities, prevented from properly educating their children, and prevented from voting.

TIMES WERE BAD!

To quote G. James Fleming, “By 1902, there was not a single Negro in a state legislature and not a single Negro in the national congress. In addition, the southern states adopted numerous devices to prevent Negroes from voting: intimidation . . . poll tax requirements, the famous grandfather clause . . . and the *Lily-White* primary. These political measures were followed by resegregation of those institutions (including state universities and other facilities) which had been desegregated after slavery.

Clearly reconstruction had died. During the following period in our history, we suffered the indignities of discrimination, the verbal insults of racists, and the physical abuse of Klansmen and others wherever and whenever they decided to satisfy their sadistic desire for violence.

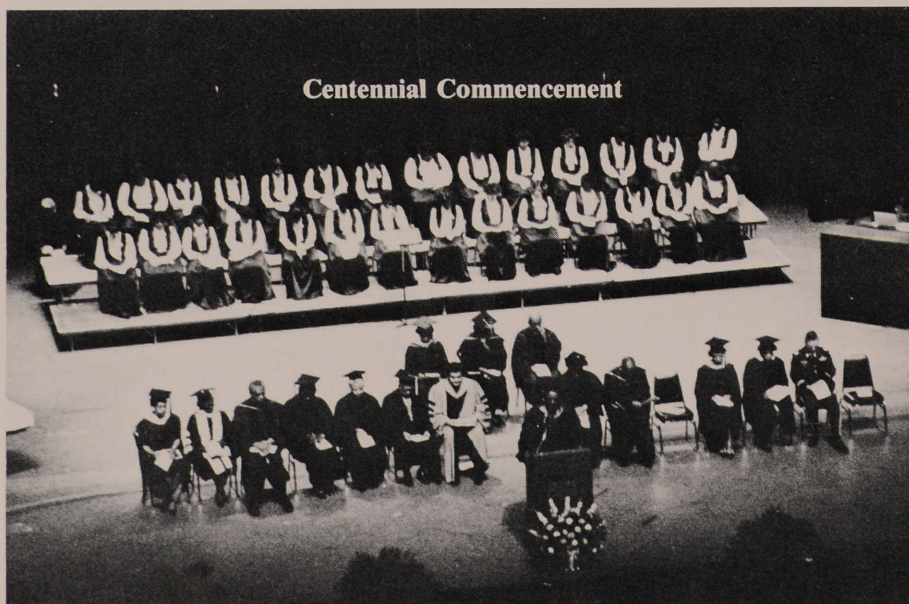
And we found ourselves again a people in disarray. Our bridges had been burned. There was no unity of purpose, little communication and even less understanding as to the magnitude of the battle that was before us. We were in fact like a lost race wandering from the South to the North, trying to find our place in a country that for 300 years had oppressed us and was sending messages that we no longer mattered.

Worse still, our self-image changed. We moved away from hope to despair . . . from action to passivity.

We began to accept the notion that we had no place in this country. We almost accepted the lies of our inferiority. When white people told us that all we could do was *sing, dance, run fast, and jump high*, we began to believe that was the extent of our talents.

And just when it seemed we were about to self-destruct, along came Dr. Martin Luther King, Jr.

It has taken another struggle (Dr. King's Civil Rights Movement) and nearly another century (90 years),



The 1981 Centennial Class of Spelman College held Commencement Exercises on Sunday, May 17th in the Atlanta Civic Center. The ceremony shown here was highlighted by the awarding of honorary doctoral degrees to keynote speaker, Congresswoman Cardiss Collins, Spelman alumnae Effie O'Neal Ellis, M.D. and Mary O. Brookins Ross, and President Emeritus of Spelman College, Dr. Albert E. Manley.



Centennial Presidents — Past (Dr. Albert Manley) and Present (Dr. Donald M. Stewart) listen to the challenging words of Congresswoman Cardiss Collins.

countless decisions by the U.S. Supreme Court, the passage of four Civil Rights Acts (1957, 1960, 1964, 1965) as well as the 1963 Anti-Poll Tax Amendment to bring about a semblance of our equal treatment under the law.

Many of us looked upon those years as the Second Reconstruction. We thought we had for the last time suffered that greatest injustice of all: that of being punished and victimized when our only crime was having been born black.

The new legislation gave us the promise of opportunity.

Malcolm had revolutionized our thinking. Dr. King had freed our minds from the past and proved that our future was in our own hands.

Stokely Carmichael had made us aware of our Black Power and **Jesse Jackson** had made us realize that black is beautiful.

By the mid-seventies, things were again looking up. The Great Society programs were paying off. We got better educated in desegregated schools, we got a few good jobs, we ran off in the summer to vacation in Europe. We pushed white folk out of their old neighborhoods and moved in.

We learned to eat steak — medium rare — instead of grits, gravy, and greens.

We became more politically astute and took great pride in reading off statistics chronicling our achievements . . . 13 or 14 members of the House, *one* in the Senate . . . several black mayors, and a whole host of city and state elected officials.

We had been transformed from slaves . . . to Negroes . . . to Coloreds . . . to Blacks. And we began to believe — truly believe in the Declaration of Independence. We wanted the world to know that we, too,

"Hold these truths to be self-evident that all men are created equal, that they are endowed by their Creator with certain inalienable rights, that among these are life, liberty, and the pursuit of happiness."

We had, we felt, built everlasting bridges. Bridges to help us over the pitfalls of poverty, bridges leading to social status, bridges over prejudice, bridges over race hatred.

So we basked in the sun.

And the Second Reconstruction died!

How did its demise come about?

It began with myths perpetrated by sociologists and politicians who were fond of citing statistics alleging that gaps between black and white incomes were closing.

—It began when we failed to cast our ballots.

—It began with slogans like "reverse discrimination."

—It began when blacks forgot *how they got over*; forgot that it was the struggle of thousands of our people that enabled them to ride in a Mercedes, to send their children to private schools, to have swimming pools in their back yards.

Albert Edward Manley

Doctor of Humane Letters

You are a distinguished scholar having received your bachelor's degree from Johnson C. Smith University, your master's degree from the Teacher's College of Columbia University, and your doctorate from Stanford University. You have done post doctoral studies at the University of Chicago.

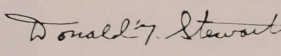
You are an outstanding educator for you started your career in 1931 as a teacher at the Stephen-Lee High School in Asheville, North Carolina and in three years became the school's principal. In 1941, you were the supervisor of the Negro High Schools of North Carolina.

You are a master teacher who became the Dean of the College of Arts and Sciences and Professor of Education at North Carolina College of Durham (now North Carolina Central University). You have guest lectured at many colleges and universities including Harvard University's School of Business and the University of Washington.


You are an administrative pioneer and builder for in 1953 you became the first male and the first black President of Spelman College where you dedicated twenty-three years to inspiring women who achieve. Later, you married one of our top achievers, Audrey Forbes Manley, M.D.

You are a humanist who has served on numerous boards including the Board of Directors of the Atlanta University Center Council of Presidents, The United Negro College Fund and The Martin Luther King, Jr. Center for Social Change as well as the Board of Trustees of Atlanta University and Spelman College.

You are a mentor, leader and friend. By honoring you, on the occasion of our Centennial Commencement, we in turn bring honor to Spelman College.



May 17, 1981



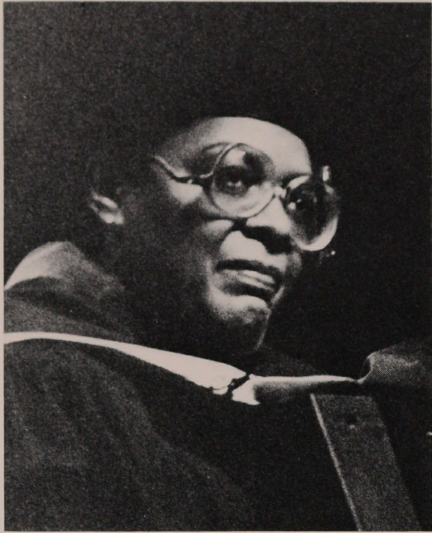
1881 A Century of Service to Women Who Achieve 1981

Spelman College
Atlanta, Georgia



Centennial jubilation is witnessed by the Commencement audience as the class of 1981 graduates.

continued on page 6



Cardiss Collins

continued from page 5

—It began when we permitted ourselves to roll in the inertia of complacency.

Death came swiftly. It happened just a few days ago when I, like Mrs. Alexander, saw history again repeat itself. For on May 7, 1981, the House passed a budget resolution which, as sure as I am standing here, could return us to economic enslavement.

TIMES ARE BAD!

Today we find ourselves on the threshold of a new period of suffering.

The mood of the country is just as nasty as it was at the end of the First Reconstruction. And again America is reneging on its promises to us — sending messages that we no longer matter.

Now you may be saying to yourselves, "Cardiss, that's a bit extreme." But I say that it's not! Just look at the similarities!

In the 1880's, whites reexamined and eliminated our voting rights. Today, Strom Thurmond is reexamining the 1965 Voting Rights Act.

In the 1880's, Jim Crow was passed by Confederate Democrats; today the Reagan Budget has been passed by Conservative Democrats.

The purpose of those laws of the 1880's was to prevent Blacks from becoming full-fledged citizens, from enjoying the fruits of their labors, from experiencing quality life in America, to put us back in our places.

The purpose of the Reagan *buzzsaw* is to prevent Blacks from becoming full-fledged citizens, from enjoying the fruits of their labors, from experiencing a quality of life in America, to put us back in our places.

By cutting out jobs and training programs . . . by snatching school lunch programs out of the mouths of our children . . . by cutting *BEOG* and eliminating other student assistance programs . . . by telling our aged that they're just going to have to suffer more pain because *Medicaid* and *SSI* will be cut . . . by cutting out the Community Services Administration which, is the only federal agency whose mission is to be an advocate for the poor . . . but cutting out the Legal Services Corporation so that the poor will have no legal recourse . . . by cutting babies off *AFDC* . . . by slashing the money for low-income housing . . . by returning to States Rights, America today is reenslaving its us!

TIMES ARE BAD!

We are on a treadmill running backward — at *high* speed.

Therefore, you, the Class of 1981 — who are beginning your life's journey today, have a most important responsibility. You must now pick up the Civil Rights struggle from where we laid it down. Because this time we must *not* succumb to these pressures. We must not take this economic beating cowering, whimpering, submitting to our self-destruction.

We must fight back and you must be the foot soldiers

Cardiss Collins
Doctor of Laws

You are a woman of the people who as a Committeewoman in Chicago's 24th Ward's Regular Democratic Organization, were deeply involved in the successful campaigns of your late husband, Congressman George Collins.

You are a woman of Congress who served as Chairwoman of the Congressional Black Caucus having been elected to fill the position of U.S. Representative in Congress from the Seventh Congressional District of Illinois left vacant by Mr. Collin's death in 1973.

You are a woman of fulfillment who has established your own distinguished record of providing service to your constituency as the first woman and first black to chair the House Government Operations Subcommittee on Manpower and Housing. In 1975, you were appointed the Democratic Party's Whip-At-Large and again you became the first black and first woman ever to hold that position.

You are a woman who as a member of the House Foreign Affairs subcommittee on Africa, as well as its subcommittee on Inter-American Affairs has earned the reputation of being a Member who "does her homework". You are a graduate of Detroit's High School of Commerce and you attended Northwestern University in Evanston, Illinois.

You are listed in *Who's Who*, *Who's Who Among Black Americans*, *Who's Who in America*, *Who's Who in Black America*, *Who's Who Among Women*, and *Who's Who in Government*.

And now you have made the *Who's Who* of Spelman College for by allowing us to honor you on the occasion of our Centennial Commencement, you in turn honor Spelman.

Spelman College.

Donald G. Stewart

May 17, 1981

1881 A Century of Service to Women Who Achieve 1981

Spelman College
Atlanta, Georgia

who take us on to economic democracy.

Your parents, your grandparents, and their forebearers have run their distance, have overcome many hurdles in our foot race to obtain total freedom and dignity of the black man. Now you must take the baton and lead us closer to the finish line.

You must play the role that Black Americans hope, need, and expect from you. You must know how to employ those lessons you have learned about economics and history and diplomacy; and I hope you have learned those lessons well.

You must also know everything you can about political power, and you must understand its limits.

You must think far beyond the official curriculum and be prepared to play a constructive role in the development of a national policy that does not diminish opportunities for Blacks, a policy that protects our interests.

You must keep on building our social, educational, and economic bridges.

And all while you're traveling along your life's journey, remember one of my favorite poems, which goes like this:

*An old man travelling a lone highway
Came at the evening cold and gray
To a chasm vast and deep and wide*

*The old man crossed in the twilight dim
The sullen stream had no fears for him,
But he turned when safe on the other side
And built a bridge to span the tide.*

*"Old Man," said a fellow traveller near
"You are wasting your time with building here.
You have crossed the chasm deep and wide
Why build a bridge at even tide?"*

*The builder lifted his old gray head.
"Good friend, in the way I have come," he said,
"There follows after me today.
A youth whose feet must pass this way."*

*"This stream which has been as naught to me
To that fair-headed youth might a pitfall be.
He, too, must cross in the twilight dim,
Good friend, I am building this bridge for him."*



Mary Olivia Brookins Ross

If you do this, you will be building the hopes of Black America. How well you do — your presence, your posture and your performance — will be recorded in journals lauding *The Rise of Blacks in America*.

If you do your work well, you will cause America to live up to the words of Thomas Wolfe:

"To every person his chance, to every person, regardless of birth, their shining opportunity; to every person the right to live, to work, to be themselves; to become whatever their ambition and decisions combined to make them — that is the promise of America."

And that my friends, I pray, is the promise of the Class of 1981.

Congratulations, and God bless you.

Spelman Messenger



Effie O'Neal Ellis

Effie O'Neal Ellis

Doctor of Humane Letters

You are a true scientist starting your career path at Spelman where you concentrated in biology and received your Bachelor of Science degree in 1933. As a graduate student at Atlanta University in 1935, you continued your scientific career specializing in parasitological research.

You are a humanitarian, for while you were encouraged in research, you had the opportunity to observe health care available to the poor and decided to be of greater service through the practice of medicine.

You are a distinguished physician receiving your degree with honors from the College of Medicine of the University of Illinois in 1950. After serving a pediatrics residency at the Massachusetts General Hospital, you did additional pediatrics work at Johns Hopkins University Medical School.

You are an outstanding leader in your chosen field having been the Director of Maternal and Child Health for the State of Ohio, a Special Assistant for Health Services for the American Medical Association in Chicago, as well as the Architect of Chicago's Quality of Life Program which did much to improve the health and well-being of old and young alike. You are now a senior consultant to Chicago's Department of Human Services and chair that city's Health Committee for the Elderly. In 1979, you were awarded the Chicago Medical Society's Public Service Award for your outstanding service to the community.

You are the wife of Arthur W. Ellis and the mother and grandmother of a daughter and two grandchildren. As a role model for hundreds of future Spelman women who will achieve, we thank you on the occasion of our Centennial Commencement. By allowing us to honor you Dr. Ellis, you in turn bring honor to Spelman.

Donald M. Stewart



May 17, 1981

1881 A Century of Service to Women Who Achieve 1981

Spelman College
Atlanta, Georgia

Mary Olivia Brookins Ross

Doctor of Humane Letters

You are President of the Women's Convention Auxiliary to the National Baptist Convention, U.S.A., Incorporated, an organization that embraces more than three and a half million Baptist women. It is the largest body of black women in the world and is widely known for its philanthropic endeavors and Christian commitment.

You are a mother and grandmother and the widow of the late Dr. Solomon David Ross, a distinguished and honored graduate of Morehouse College, who pastored the Greater Shiloh Baptist Church in Detroit, Michigan.

You are an outstanding Spelman Alumna, class of 1928.

You are a teacher having taught in the states of Georgia and Michigan. You have done graduate studies at Wayne State and the University of Michigan.

You are one of Spelman's top ambassadors having traveled to all parts of the world. It is through your dedicated devotion, involved interest and enthusiastic support that a record number of young women from Africa, the Islands, and across America have chosen your alma mater for their undergraduate pursuits.

You are a member of numerous organizations including the Chaplain's Advisory Committee of Penal Institutions of Michigan; the Board of Trustees, American Baptist Theological Seminary; the Board of Managers of Church Women United; the Executive Committee of the Baptist World Alliance; the Womens Planning Committee of the Japanese International Christian University Foundation; and you are the former Vice President of the Executive Committee of the North American Baptist Women's Union; and hold life membership in the National Council of Negro Women, NAACP, and Delta Sigma Theta Sorority.

You are an author and editor having written "The Minister's Wife" and "New Women for a New World for Christ" and edited "The Mission," the Official Study Quarterly of the Woman's Convention, Auxiliary to the National Baptist Convention, U.S.A., Incorporated.

You have received numerous awards and citations and honorary degrees for your untiring efforts in the fields of Christian Education and Public Service and are listed in *Who's Who Among American Women*. Today on the Occasion of our Centennial Commencement by honoring you, you in turn allow us to honor Spelman College.

Donald M. Stewart



May 17, 1981

1881 A Century of Service to Women Who Achieve 1981

Spelman College
Atlanta, Georgia

SALUTE TO DR. MARY O. ROSS

Editor's Note: The following speech was given in Detroit, Michigan on September 9, 1981 by President Donald M. Stewart in honor of Dr. Mary O. Ross.

Enlightenment, involvement, the essential ingredients of leadership in all walks of life, for all of God's children, as they set about the task of doing God's work regardless of its form, time or place.

What a wonderful theme for the 80th Annual Session of the Woman's Convention, Auxiliary to the National Baptist Convention, U.S.A., Inc., for indeed, the Lord is the way, the light, the path, our open door. For this dedicated and distinguished organization, leadership in the name of our dear Jesus has been the by word for 81 proud and eventful years.

Following in the great tradition of her predecessors, Mrs. S. Willie Layten and Miss Nannie Helen Burroughs, your President today, Dr. Mary O. Ross, epitomizes this spirit and personifies the real meaning of leadership in Christian terms. How proud we are to be able to call her sister. How proud I am that she is an alumna of Spelman College. It is an honor and privilege for me to pay tribute to Dr. Ross this evening in the fair city of Detroit along with her hundreds of friends, admirers and colleagues.

At a time in our country when enlightened, involved and committed leadership, particularly black leadership, is so important for our very survival, how fortunate we are to have Dr. Ross. So many of the giants have fallen, King, Bethune, Randolph and, most recently, Roy

continued next page

Dr. Ross continued from page 7

Wilkins. It is on the Mary O. Ross's and the powerful organizations they lead that we must now pin our hopes for the future. With divine guidance and inspiration, Dr. Ross is more than able to meet the challenge.

We must take some credit at Spelman for the kind of person she is and the success she has so deservedly earned. Indeed, since its founding in 1881, under the aegis of the American Baptist Home Mission Society, Spelman College has been dedicated to the preparation and development of strong black female leaders like Dr. Ross. Having started in the basement of Atlanta's Friendship Baptist Church, as the Atlanta Baptist Female Seminary, later renamed for **Mrs. Laura Spelman Rockefeller**, Spelman College for one hundred years has sought to produce outstanding black women leaders imbued with the spirit of service and dedicated to Christian values and ideals such as those embraced by Dr. Ross.

Today, as a strong liberal arts college graduating well-educated black women who achieve, we continue to build on our fine Baptist roots. We are producing the enlightened, committed, involved black leaders of tomorrow that our society and our own community so desperately need. These young women will walk in the footsteps and the long shadow of Dr. Ross. May they learn her lessons well.

In paying special tribute to Dr. Ross this evening, I could think of no better expression of our love, respect and admiration for her at Spelman than the citation which she received from Spelman this past May when she was awarded the Honorary Doctorate of Humane Letters at our centennial commencement exercises.

So Dr. Ross, on behalf of your *alma mater*, Spelman College, I salute and congratulate you again this evening on this very special occasion. God bless you and thank you for being you.

Dorothy Height

Doctor of Humane Letters

You have shared your competence and your gifts of leadership, serving as a member of the National Board Staff of the Young Women's Christian Association for 33 years, developing therein interracial, educational and training programs.

You have served as role model and mentor for women everywhere - of all ages, races and nationalities as you, in your capacity as National President of the National Council for Negro Women, mobilized women for work in combatting hunger, illiteracy and other problems that do violence to the lives of poor people.

You have travelled this nation and the world in service to humanity as a member of the National Commission on the Status of Women, the Defense Advisory Committee of Women in the Services, and the United States Information Agency Advisory Council on Minority Affairs; as a consultant to the Assistant Secretary of State for African Affairs; and as a delegate to the UNESCO Conference on Women and Her Rights in Jamaica.

You have demonstrated your personal commitment and dedication to the concepts of world interdependence and ecumenism by serving as a visiting professor at the University of Delhi, India; as a member on a study mission to Israel for the American Jewish Committee Institute on Human Relations and as keynote speaker for the National Convention of the Black Women's Federation of South Africa in Johannesburg.

You have been honored by many institutions and now you honor us during our centennial celebration by coming to this hearth called Spelman College where the minds of black women have been kindled and their spirits nurtured by your kind of inspiration during the past century.



April 12, 1981

Donald Stewart

1881 A Century of Service to Women Who Achieve 1981

Spelman College
Atlanta, Georgia

The above citation was presented to Dorothy I. Height on the occasion of the Centennial Vesper Service held on Sunday, April 12, 1981. During the ceremony, Miss Height received an honorary degree from the college.

Honor Roll 1981

From the **PRESIDENT'S DESK**

Spelman College
Atlanta, Georgia 30314
(404) 681-3643



Dr. Donald M. Stewart
President

November 19, 1981

Dear Alumnae and Friends:

Our 1981 centennial year has come to an end. We look back on that year with joy and pride, but also with a wistful sadness because it passed so very quickly. The year was filled with dozens of special programs involving almost all segments of the Spelman community and featuring many visitors of national and international repute. The Centennial activities reached a crescendo in collective exaltation during our celebration in Sisters Chapel on April 11th. This outpouring of celebratory enthusiasm was matched by your generous giving to the College.

Coinciding with the successful completion of our \$10.2 million Centennial Capital Campaign, the results of our 1980-81 centennial alumnae giving program were equally impressive. In 1980, alumnae gave \$58,131 to the College. Alumnae Giving to Spelman increased to an unprecedented \$127,885 in 1981! What an impressive record of improvement this is, and the College is deeply grateful.

Spelman's second-century challenge is to move on from strength to strength. We must continue to increase alumnae participation in our annual giving program. Joining with our many individual, corporate, and foundation friends who support us, Spelman alumnae can and do make the difference. We are grateful to all who have given to the College in the past and who are now willing to invest in our promising future. Spelman for one hundred proud years has educated black women who achieve. We will continue this tradition in our second century. With your support we will succeed. Thank you.

Sincerely,

Donald M. Stewart
President

DMS/gg

1881 *A Century of Service to Women Who Achieve* 1981

Honor Roll 1981

D.M. — Dress Making
E.E. — Elementary Education
H.S. — High School
F.S. — Former Student
N.T. — Nurse Training
T.P.C. — Teacher's Professional Course

*Century Club
**Founders' Club
***Presidents' Society

PRESIDENTS' SOCIETY

Dr. Ernestine Walker Baylor '49
Dr. Juel Pate Borders-Benson '54
Mr. M. William Breman
Mrs. Joy Walker Brown '52
Mrs. Lucile Womack Brown HE '22
Mr. Robert L. Bunnen
Mrs. Laura R. Chasin
Miss Emily America Copeland '37
Mr. & Mrs. William Beasley Harris
Mrs. Clarie Collins Harvey '37
Mr. Henry J. Heinz, II
Dr. Grace Howell '40
Mrs. Florence Morrison Hogan '31
Miss Camilla L. Howard '27
Mrs. Minnie Felton Jackson '38
Mrs. Phoebe W. Franklin Lundeen
Mrs. Mayme Martin King '37
Dr. Shirley Marks-Brown '69
Dr. Benjamin E. Mays
Mrs. David H. McAlpin
Mrs. G. G. Michelson
Mr. Henry M. Minton
Mr. & Mrs. George D. O'Neill
Mrs. Fred Patterson
Mrs. Josephine C. Robinson

Mr. James D. Robinson, III
Mr. & Mrs. Laurance S. Rockefeller
Dr. Mary Brookins Ross '28
Mrs. Joan Taylor Sanders '68
Mrs. Myra Smith Taylor '61
Mr. & Mrs. Reginald Valentine
Mrs. Wilma S. Warbury
Mr. Albert N. Wardlaw
Mrs. Viola Branham Wardlaw '28
Mrs. Estelle Bailey Webster '29
Mrs. I. Margaret White '45
Mr. Lawrence A. Wien
Miss Hulda A. Wilson '56
Dr. & Mrs. Asa G. Yancey

FOUNDERS' CLUB

Mrs. Jane M. Abram
Mr. Ivan Allen, Jr.
Mr. & Mrs. Robert L. Ashe, Jr.
Mrs. Lorraine Dixon Caviness '36
Mrs. Maenelle Dixon Dempsey '33
Mrs. Rosebud Brown Dixon '35
Mrs. Virginia Turner Dowell '47
Mrs. Cornelia McGowens Easley '36
Mrs. Madlyn Gray Golightly '36
Mrs. Nancy Hall Green
Mrs. Glenna Stewart Haynes '40
Mrs. Juanita Reddick Hill '36
Mrs. Dorothy S. Hopkins
Mrs. Alexine Clement Jackson '56
Mr. Sidney E. Jennette, Jr.
Dr. Joyce F. Johnson
Mrs. Antoinette Drake Clifford Kindall '42
Mrs. Helen S. Lanier
Mrs. Mignon Lackey Lewis '51

Mrs. Eddielena Haynes Littlejohn '31
Mrs. Elizabeth J. Macomson '36
Dr. Christian R. Moorhead
Mrs. Gaston Bradford Moseley '29
Mrs. Patricia Moody Pearsall '56
Mrs. Celestine Davenport Pettrie '36
Mr. & Mrs. Allen Questrom
Mrs. Birdie Wallace Robinson '36
Mrs. Caroline Shaw
Mrs. Genevieve Wheeler Thomas '36
Miss Ida Wood '39

1881 SOCIETY CENTURY CLUB

Ms. Ann Abram
Dr. June McDonald Aldridge '53
Mrs. Annie Alexander FS
Mrs. Cecil Alexander
Mrs. Josephine Felton Alexander '52
Mrs. Catherine Minor Allen '56
Miss Fannie Louise Allen '35
Mrs. Sadie Sims Allen '41
Mrs. Lura D. Altheimer
Mr. & Mrs. Anthony M. Ames
Mrs. Laura Hill Anderson '40
Miss Sibyl L. Anderson '45
Mrs. Wilma Jaymes Anderson '50
Mrs. Dorothy Aderhold Andrews FS
Miss Patricia D. Arbor '74
Mr. & Mrs. H. Ross Arnold, III
Mrs. Gleaner Simmons Atkins '32
Mrs. Elizabeth Lee Atkinson '50
Mr. Sam Ayoub
Mr. C. Everett Bacon
Mrs. Lois Greenwood Bailey '34

Ms. Phoebe L. Bailey '79
Dr. Hilary Baker
Miss Brenda S. Banks '71
Mrs. Ernestine Brooks Banks '45
Mrs. Fannye Hopkins Banks '51
Mr. Bentley T. Barnes
Mrs. Wylma White Barnett '53
Mrs. Juliet Blackburn Beamon '58
Mrs. Helen Brookins Bell '53
Mrs. Leatrice Traylor Bell '51
Mrs. Pearl Melvee Bellingier '48
Dr. Mary Henderson Bennett '61
Mrs. Eunice Freeman Benton '39 (Deceased)
Mrs. Annie Waller Berlack '43
Mrs. Annie Elston Berry '52
Dr. George P. Berry
Mrs. Paula L. Bevington
Mrs. Katherine Goodman Bigby '45
Mrs. Jacqueline Williams Biggins '68
Mrs. A. Celestine Taylor Billings '38
Miss Ella Mae Billups '44
Mr. Francis M. Bird
Mrs. Willie Dobbs Blackburn '31
Mr. Charlie H. Blackwell
Ms. Ednah B. Blalock '36
Miss Catherine Bland '76
Miss Betty J. Blasingame '53
Miss Doris A. Blayton '43
Mrs. Jacquelyn Johnson Bolton '59
Mrs. Blanche Jackson Booker NT '21
Mrs. Jean L. Bowen
Mrs. Dorothy Ross Bowie '51
Mrs. Gloria Strong Boyd '56
Mrs. Ophelia Conley Boyd '51
Mrs. Jacquelyn Kirby Boyette '67
Dr. Sylvia Bozeman
Mr. Inman Brandon
Mrs. Jennie Pritchard Branham '38
Miss Beverly L. Branton
Mrs. Julianne R. Brawner
Mrs. Anne Thomas Braxton '39



Mrs. Ernestine Erskine Brazeal '28
 Dr. Kathryn Brown Brisbane '55
 Mrs. Patricia McWorther Bristol '38
 Mrs. Annie Glenn Brooks TPC '22
 Mrs. Helen Bell Brooks '37
 Mrs. Lottie E. C. Brooks FS
 Mrs. Barbara Anthony Brown '68
 Mrs. Dorothy Zellner Brown '50
 Mrs. Margaret Singleton Brown '33
 Mrs. Rosa Hill Brown '41
 Mrs. Ruth Harvey Brown '53
 Miss Thelma B. Brown '29
 Dr. Jane Smith Browning '68
 Miss Trudie O. Brunson '43
 Mrs. Doris Daniels Bryant '45
 Mrs. Fannie Dukes Bryant '45
 Mrs. Gloria Price Bryant '54
 Mrs. Bernice Woolfolk Bufford '56
 Mrs. Mary Brown Buggs '41
 Dr. Penelope L. Bullock '41
 Mrs. Sharon Pierro Burks '69
 Dr. Baldwin W. Burroughs
 Miss Stephanie Bush '68
 Mrs. Lillian Davis Bussey '38
 Mrs. Prudence Arnold Bussey '34
 Dr. B. LaConyca Butler '56
 Mrs. Loyce Willis Bynum '33
 Mrs. Herlena Harris Byrd '68
 Mrs. Diane Clark Caesar '68
 Mrs. Elise Dunn Cain '49
 Mrs. Roseland Dixon Caldwell '36
 Mrs. Madeline Patterson Cargill '45
 Mrs. Sibyl Sims Carley '72
 Mrs. Anne C. Carr
 Mrs. Evelyn Carroll
 Dr. Richard Carroll
 Mrs. Doris Perry Carter '49
 Dr. Juanita Robinson Carter '66
 Mrs. Manya Russell Carter '41
 Mrs. Ruby Woods Carter '49
 Mrs. Vivian McFall Carter FS
 Mr. & Mrs. W. Colquitt Carter
 Miss Paula Caruthers '74
 Mr. & Mrs. Dave Center

Miss Theresa A. Chandler '70
 Dr. Patricia White Chatard '62
 Mrs. Helen Bartlett Chatman '58
 Mrs. Geraldine Manley Cheek '56
 Mrs. Evelyn Willis Chisolm '49
 Mrs. Earlene Bell Christopher
 Mrs. Eugenia Chandler Chue HS '14
 Mrs. Blanche P. Clardy '75
 Mrs. Mary Lee Clark FS
 Mrs. Mildred Moore Clark HS '29
 Mrs. Ruby Handspike Clay '57
 Mrs. Josephine Dobbs Clement '37
 Mrs. Mozelle Dailey Clemmons '43
 Mrs. Dorothy Gibson Cobb '56
 Mr. & Mrs. Herbert B. Cohen
 Mrs. Brenda Hill Cole '63
 Mrs. Louise Gray Coles '32
 Dr. Juanita Collier '51
 Mrs. Mattie Hardy Collins '36
 Mr. & Mrs. R. Don Comstock, Jr.
 Mr. John A. Conant
 Mrs. Anita Woods Cook '68
 Mrs. Frances Dyer Cooke '67
 Miss Jewell J. Cooke FS
 Mrs. Rubye Singleton Cooke '49
 Mrs. Lillian McKinney Cooley '55
 Mrs. Pearl Floyd Coombs HS '20
 Mrs. Eleanor Bell Coote '42
 Dr. Carmen Jordan-Cox
 Mrs. Countess Young Cox '37
 Mrs. Marjorie Vaughn Crawford '51
 Mrs. Ruth Minor Crawford '54
 Mrs. Yolande Owens Creecy '71
 Mrs. Martha Brock Crews '43
 Mrs. Alma Ferguson Crockett '29
 Miss Bettye J. Crockett '52
 Mrs. Delores Parker Crockett '69
 Mrs. Gladys Starling Crockett '34
 Mrs. Jacqueline Larkins Crook '48
 Mrs. H. Preston Crum
 Ms. Harriett R. Cunningham '42
 Mrs. Rose Smith Curry HS '24
 Mrs. Betty Lovett Dabney '56

Mrs. Beverly Carroll Daniel '66
 Mrs. Carolyn Reynolds Daniel '66
 Mr. & Mrs. Hampton L. Daughtry
 Mrs. Gloria Watts Davis '60
 Mrs. Hattimarie Parks Davis '47
 Mrs. Leanora Butler Davis '47
 Mrs. Mary Adams Davis '38
 Mrs. Myrtle Bowers Davis '42
 Mrs. Pearline Adamson Davis '58
 Mrs. Elizabeth Latimer Dawson '52
 Miss Ineze De Vaughn '39
 Mrs. Emmalynn Jenkins Deal '49
 Miss Alice Deck '72
 Mrs. Helen Martin DeLara '51
 Mrs. Jacquelyn Smith Demons '59
 Mr. & Mrs. James F. Densler
 Mrs. Gloria Davis Dent '48
 Miss Dorothy L. DeVillars '51
 Mrs. Georgia Smith Dickens '42
 Miss Bernadette Y. Dickinson '75
 Mrs. Coltilda Daniels Diggs '51
 Dr. Rita Dixon '56
 Mrs. Barbara Forte Dixon-Guess '69
 Mrs. Alyce Smith Dodson '46
 Mrs. Bennie Tillman Dorsey '47
 Mrs. Carrie Laster Dothard '54
 Dr. Pauline E. Drake '58
 Mrs. Gladys Arnold Draper '57
 Mrs. Marymal Morgan Dryden '49
 Mrs. Frances W. DuBose
 Mr. Charles T. Duffy
 Mrs. Franzetta Williams Durant '40
 Miss Marion M. Durant FS
 Miss Bettie J. Durrah '63
 Mr. Harry Dwoskin
 Dr. Oran W. Eagleson
 Mrs. Essie Jewell Eason '55
 Mrs. Ella Gaines Yates Edwards '49
 Miss Jeta Lynn Edwards '76
 Mrs. Minnie B. Edwards FS
 Miss Phyllis Edwards '79
 Mrs. Lavaugh Force Elkins '49
 Mrs. Alpha Tally English '33
 Mrs. Ethelynde Armstrong Ingram '35

Mrs. Marilyn Green Epps '43
 Miss Annette V. Evans '46
 Mrs. Lola Blasingame Evans '52
 Mrs. Mabel Dockett Evans '31
 Mrs. Margaret Creagh Evans '39
 Dr. Etta Falconer
 Mrs. Lois Davenport Fambro '30
 Mrs. Inez Nappier Faniel '50
 Mrs. Shirley McGee Fannings '58
 Mrs. Christine King Farris '48
 Mrs. Florrie Jackson Felder '73
 Mrs. Alvin M. Ferst, Jr.
 Mrs. Margaret Jones Few '56
 Mrs. Lillie Williams Flenory '39
 Mrs. Elvira Jackson Forbes '35
 Mrs. Edwina Westmoreland Ford '37
 Mrs. Elizabeth Bryan Fortson '57
 Mrs. Elva Thomas Foster '35
 Mrs. Gertrude Ketchum Foster HS '25
 Miss Jeane LaRue Foster '53
 Dr. Eleanor Ison Franklin '48
 Mrs. Isobel A. Fraser
 Mr. & Mrs. John F. Frawley
 Mrs. Evelyn Green Freeman '30
 Mrs. Margaret Anderson Freeman '45
 Mrs. Victoria Joyner Freeman '66
 Mr. Herbert Friedman
 Miss Thelma Fuqua '71
 Mrs. Gertrude Davis Fuller '48
 Mrs. Helen Wingood Fullilove '37
 Mrs. Rubye Vinson Gadson HS '23
 Mr. & Mrs. David H. Gambrell
 Mrs. Mary Kidd Gardner '67
 Mrs. Lurlene Baker Garland '37
 Ms. Pamela Y. Garrett '71
 Mrs. Ida Russell Gary '43
 Mrs. Gene Gary-Williams '56
 Dr. James S. Gates
 Mrs. Mary Menafee Gavin '34
 Mrs. Mary Yancey Gay '43
 Mr. John Gehl
 Dr. & Mrs. G. L. Geiger



x Mr. & Mrs. L. L. Gellerstedt
 x Mrs. Jeane Wilborn George '62
 x Mrs. Ethel Harvey Georges '39
 x Ms. Ruth Gershon
 x Mrs. Dorothy W. Gibson
 x Mrs. Sadie Brown Gibson '29
 x Mrs. Sadye Conley Gibson '43
 x Mrs. Rosalie Jefferson Gilbert '38
 x Mrs. Della Foster Gill '51
 x Mrs. Julia Martin Gilmore '59
 x Mrs. Ernestine Wallace Gipson '43
 x Mrs. Gladys Glass '58
 x Dr. Julia McKinney Glass '40
 x Mrs. Katherine T. Glass-Kelly '56
 x Mrs. Darlene Yarbrough Glover '56
 x Mrs. Irma G. Goldwasser
 x Mrs. Jamie Reddick Graham '36
 x Mrs. Ernestine Stewart Gray '70
 x Mrs. Augusta Johnson Green HS '32
 x Miss James Frances Green '20
 x Mrs. Jean Wright Greenblatt '53
 x Mrs. Dorothy Gulley Greene '54
 x Miss Rachel Grier '72
 x Mrs. Vivian Bailey Grier '51
 x Mr. Claude Grizzard, Jr.
 x Mrs. Betty G. Haas
 x Mrs. Leonard Haas
 x Mrs. Rosa Rice Hadley '57
 x Mrs. Ruth Redmond Hall '41
 x Mrs. Gwendolyn Fields Halls '49
 x Mrs. Julia Terry Hamilton '40
 x Miss Linda B. Hammett '68
 x Mrs. Essie Brook Hammond '24
 x Mrs. Freida McGhee Hampton '51
 x Mrs. Lula Smith Hanks '42
 x Dr. Virginia R. Hannon '34
 x Mr. C. Edward Hansell
 x Mrs. Helen Walker Harden '40
 x Mrs. Emma Lyons Hardnett '51
 x Mrs. Berdie Ricks Hardon '67
 x Mrs. Berlyn Chatard Hargrett '66
 x Mrs. Henrietta Houston Harper '46
 x Mrs. Charlyn Harper-Bolton '71
 x Mrs. Deborah Weil Harrington
 x Dr. Mary Harris
 x Mrs. Bernadette Weston Hartfield '71
 x Mr. William C. Hatcher
 x Mrs. Ruth Davis Hawk '46
 x Mrs. Sarah Jones Hayden '39
 x Mrs. Fanny Smith Hayes '35
 x Mrs. Grace Ross Hayes '33
 x Mrs. Faith Neal Hemphill '61
 x Mrs. Shirley Statom Henderson '52
 x Dr. Carl R. Hendrickson
 x Mrs. Louise Roper Hicklen '43
 x Mrs. Gwendolyn Horton Hicks '51
 x Miss Jeannette E. Hicks '28
 x Mrs. B. H. Hill, Jr.
 x Dr. Freddie L. Hill '68
 x Mrs. Eva Lowe Hollingsworth '61
 x Mrs. Elizabeth Yorke Holloway '49
 x Attorney Donald L. Hollowell
 x Mrs. Anne T. Holmes
 x Mr. J. D. Hopkins
 x Mrs. Sallie Lumpkins Hopson '32
 x Dr. Anne R. Hornsby
 x Miss Dorothy E. Hornsby '33
 x Mrs. Mary Patterson Houston '37
 x Mr. & Mrs. Henry Howell
 x Mrs. Edna Douthard Hubbard '34
 x Mrs. Ethel Alexander Hudson '34
 x Mrs. Ernelle Combs Hughes '47
 x Mr. & Mrs. Gerry Hull
 x Dr. & Mrs. J. F. Hume
 x Mrs. Gloria Smith Humphrey '71
 x Dr. Dorothy Johnson Hunt '42
 x Mrs. Gwendolyn Holland Hunter '40
 x Mrs. Hattie Cotton Hurse HS '26
 x Mrs. Rutha Watson Jack '41
 x Mrs. Irene Dobbs Jackson '29
 x Mrs. Marie Lauray Jackson '44
 x Dr. Wilmotina B. Jackson '51
 x Mrs. Deborra Watts James '73
 x Mrs. Gloria Butler James FS
 x Mrs. Shirley Barber James '68
 x Mrs. Theodora Fisher James '26
 x Mrs. Mattiwilda Dobbs Janzon '46
 x Miss Cheryl L. Jefferson '80
 x Mrs. Emma Stone Jeffries '49
 x Mrs. Cynthia Brown Jenkins '69
 x Mrs. Vernyce Card Jenrette '65
 x Mr. Richard A. Jensen
 x Mrs. Anna Lanon Johnson '43
 x Mrs. Billye Jones Johnson '47
 x Ms. Calafra Eloise Johnson '51
 x Mrs. Charlotte Mize Johnson '64
 x Mrs. Cynthia Guthrie Johnson '77
 x Mrs. Dora Kennedy Johnson '46
 x Mrs. Doris Sims Johnson '71
 x Miss Edna L. Johnson '64
 x Mrs. Eloise McKinney Johnson '47
 x Mrs. Julia Ponder Johnson '56
 x Mrs. Rose Harris Johnson '57
 x Mrs. Willie Sherwood Johnson '44
 x Ms. Barbara J. Jones
 x Mrs. Bessie Washington Jones '52
 x Mrs. Clara Stanton Jones '34
 x Mrs. Janet Webster Jones '58
 x Miss Lula Thomasine Jones '35
 x Mrs. Rebecca Watkins Jones HS '22
 x Mrs. Genevieve Taylor Jordan '26
 x Mrs. Millicent Dobbs Jordan '33
 x Mrs. Leronia Stokes Josey '65
 x Miss Beryl Graham Kalisa '71
 x Mr. Lawrence G. Keeney
 x Mrs. Jeane Clark Kelly '56
 x Mrs. Annie Brown Kennedy '45
 x Mrs. Lyda McCree Kennedy '27
 x Mrs. Dorothy Cole King '52
 x Miss Elizabeth G. King '43
 x Mrs. Linda Hayes King '66
 x Mrs. Louise Hembree Larkin '51
 x Mrs. Troas Lewis Latimer '24
 x Mrs. Shirley Hanks Leaphart '57
 x Mrs. Beautine Hubert Decosta Lee HS '30
 x Dr. William B. LeFlore
 x Miss Claudine L. Leigh '37
 x Miss Pamela J. Lewis '70
 x Mrs. Allie Allen Lilly '30
 x Mrs. Ernestine Anthony Lipscomb '32
 x Dr. Margaret Bennett Little HS '28
 x Mrs. Wanda Smalls Lloyd '71
 x Dr. Virginia Brown Lockhart '61
 x Miss Alice G. Lomax '34
 x Mrs. Virginia Entzminger Longino '47
 x Mrs. Pauline Mackey Love '52
 x Mrs. Margaret Cunningham Lucas
 x Mrs. Myrtle Clarke Lumpkin '29
 x Mrs. Henrietta Reid Lundy '60
 x Mrs. Emistine Sellers Lyons '37
 x Miss Geraldine E. P. Lyons '37
 x Mr. & Mrs. Maurice N. Maloof
 x Mrs. Ernestine Miles Mann '57
 x Ms. Helen E. Mantler
 x Mrs. Veloisa Tate March '73
 x Mrs. Jennie M. Marshall '37
 x Mrs. Helen Andrews Martin '36
 x Miss June T. Martin '54
 x Mrs. Pauline A. Martin
 x Mrs. Peggy Jones Martin '58
 x Mr. Michael J. Mason
 x Mrs. Eleanor F. Massell
 x Mrs. Samira Harris Mathes HS '14
 x Miss Sarah R. Matthews '79
 x Mrs. Wanda Long Matthews '69
 x Mrs. Karen Billings Maultsby '73
 x Miss Ernestine May '34
 x Mrs. Evelyn Ebbs May '42
 x Mrs. Charlotte Knowles Mays '51
 x Miss Susie M. Mays '46
 x Mrs. Pender Jackson McCall HS '26
 x Miss Mattye L. McCauley HS '15
 x Miss Delores L. McCollum '73
 x Mrs. Doris Thompson McCollum '49
 x Ms. Elizabeth J. McCormack
 x Mrs. Pamela Weston McCrae '71
 x Mrs. Kathleen Pappy McDonald HS '21
 x Mrs. Nellie Scott McFall HS '20
 x Mrs. Priscilla White McGaughey '48
 x Mrs. Geneva Higgins McGee '44
 x Mrs. Lena Maddox McGhee FS
 x Mrs. Juanita Carr McGill FS
 x Mrs. Constance Buckins McGuire '71
 x Mrs. Roseland Yancey McLarin '71
 x Mrs. Rachel Cobb McMillan '42
 x Mrs. Karen Lodrig Meritt '74
 x Mrs. Mexico Hembree Mickelbury '38
 x Dr. Gwendolyn Middlebrooks '61
 x Mrs. Ida L. Miller HS '29
 x Mrs. Artholia Heard Milligan '39
 x Miss Mable L. Millner '74
 x Mrs. Erin Goseer Mitchell '55
 x Mrs. Jeania Jones Mitchell '76
 x Mrs. Julia Allen Mitchell '65
 x Mrs. Patricia Hill Mitchell '68
 x Ms. Zinora M. Mitchell '76
 x Mrs. Dorethea Morton Mobley '67
 x Mrs. Anthony Montag
 x Miss Shirley Montgomery '74
 x Mrs. Hazel Rucker Moore '52
 x Mrs. Jacqueline Wellington Moore '53
 x Ms. Revelyn Moore
 x Dr. Lois Moreland
 x Mrs. Laura Akridge Morgan '64
 x Mrs. Sue Perteet Morris '49
 x Miss Althea V. Morton '40
 x Mrs. Leona Murphy Morton FS
 x Dr. Diane Moseberry '74
 x Mrs. Kathryn Johnson Moses '39
 x Judge Harriet Mitchell Murphy '49
 x Mrs. Vernistine Bynes Murphy '67
 x Mrs. Delores Yancey Myers '69
 x Mrs. Eliza Ammons Nabbie HS '28
 x Mrs. Bernry Hardwick Nelson '39
 x Miss Rosa L. Nichols '56
 x Ms. Carolyn Odom '66
 x Mr. John H. Ogden
 x Mrs. Antoinette Mainor Olive '43
 x Mrs. Dorothy Hood Oliver '44
 x Mrs. Frankie Butler Outten '33
 x Mrs. Verta Carter Owens '41
 x Mrs. Augusta Draper Palmer
 x Dr. James D. Palmer
 x Mrs. Julia Williams Palmer '39
 x Mrs. Sacia Ross Pandley '46
 x Mrs. Mary Gaines Parker '42
 x Ms. Susan W. Parker
 x Mrs. Joann Moore Parks HS '27
 x Mrs. Jennie Strickland Partee '42
 x Mrs. Bertha McGuire Patmon '56
 x Mrs. Anne Borders Patterson '61
 x Mrs. Doris Patterson '56
 x Dr. Bentley Patterson-Harper '70
 x Mrs. Juanita Scott Patton '56
 x Mr. James E. Payne, Jr.
 x Mrs. Muriel Brown Pearson '47
 x Mrs. Susie Blasingame Pearson '56
 x Mrs. Sandra Hendrix Penn '71
 x Mrs. Mildred Wynn Penson '51
 x Mrs. Willie Martin Perkins '39
 x Mrs. Lucile Palmer Perrino '35
 x Mrs. Grace Jason Perry
 x Mrs. Magdalene Terrell Perry '56
 x Mrs. Zelma Thomas Peters '39
 x Mrs. Rosalie Slack Peterson '49
 x Mrs. Rosetta Hicks Peterson '54
 x Mr. & Mrs. Harry A. Piffner
 x Mrs. Gussie Davis Phillips '46
 x Mrs. Deirdre Pate Pierce '71
 x Mrs. Lula Belle Pierro '40
 x Mrs. Mildred Sneed Pierro '38
 x Miss Evelyn Larue Pittman '33
 x Mrs. Dorothy Mapp Pleasant '52
 x Dr. Roslyn Pope-Sturgis '60
 x Ms. Sadye W. Potter '71
 x Mrs. Sara Smith Potts FS
 x Dr. Ann Ashmore Poussaint '63
 x Miss Johnnie S. Price '36
 x Miss Ivy Prout '74
 x Miss Angelique Pullen '67
 x Mrs. Lucille Hughes Pulliam HS '22
 x Mrs. Myrtle Lagard Purnell '30
 x Dr. Leon G. Pye
 x Mrs. Naomi Stith Queen '41
 x Mrs. Evelyn Seace Quivers '41
 x Dr. Nellie G. Randall
 x Mrs. Selie R. Ratchford '56
 x Mrs. June Walker Reddington FS
 x Mrs. Alice Webster Reid '29
 x Mrs. Irene B. Reid FS
 x Mrs. Norma Payton Reid '44
 x Miss Silvana D. Revis '76
 x Mr. Christopher Reynolds
 x Mrs. Johnnie Hadley Reynolds '30
 x (Deceased)
 x Mrs. Ann Boon Rhea
 x Mrs. Wilhelmina C. Rhetta '37
 x Mr. Michael P. Rich
 x Mrs. Lola Roberts Richards '61
 x Miss Marjorie A. Ricks '49
 x Mrs. Helen B. Rieser
 x Miss Carole H. Riley '78
 x Mrs. Ruby Nelson Riley '35
 x Mrs. Dianne Stevenson Roberson '68
 x Miss Emma D. Roberts '73
 x Dr. Aurelia D. Robinson '47
 x Mrs. Betty Whited Robinson '57
 x Mrs. Ethel Boykin Robinson '46
 x Mrs. Gloria Gardner Rosemond '54
 x Mrs. Fay Wise Ross '56
 x Mrs. Alma Blanton Roundtree '50
 x Mrs. Dovey Johnson Rountree '38
 x Dr. Jacqueline Jones Royster '70
 x Mrs. Judith Fennell Ruffin '66
 x Mrs. Connie Spencer Sabbath '37
 x Mrs. Ann D. Salo
 x Mrs. Dorothy Hamilton Sanders '38
 x Mrs. Maderline Willis Scales '49
 x Mrs. Grace McKivsey Scipio '46
 x Mrs. Juanita Hudson Scott '45
 x Mrs. Evelyn House Scrotchings '39
 x Mrs. Tanya Coleman Seidu '72
 x Mrs. Amiyah Shabazz '71
 x Mr. Shouky A. Shaheen
 x Mrs. Beverly Brown Shaw '71
 x Mrs. Retha Jackson Shelton '29
 x Miss Kimberly Shepard '78
 x Mrs. Mary Dupree Sherman '65
 x Miss Pauline L. Shields '46
 x Mrs. Genevieve Lawless Short '47
 x Mrs. Mary A. Siegel
 x Mrs. Jewel Woodard Simon
 x Mrs. Lottie Echols Simon '37
 x Miss Marguerite F. Simon '35
 x Dr. Sandra A. Sims '70

Mrs. Beulah Graham Smith '51
Miss Camille A. Smith '66
Miss Carolyn O. Smith '47
Mrs. Carrie Adams Smith '35
Mrs. Charlie Gardener Smith
Mrs. Cora Douthard Smith '33
Miss Dentye M. Smith '58
Miss Donna J. Smith '74
Mrs. Elsie Mallory Smith '55
Mrs. Ernestine Latson Smith '45
Mrs. Georgia Atkins Smith '49
Dr. Grace B. Smith
Mrs. J. Lucian Smith
Mrs. Josephine Jackson Smith '46
Mrs. Lavada Johnson Smith '43
Mrs. Marquelyn Jackson Smith '70
Mrs. Naomi Shocklin Smith '29
Mrs. Samantha Howard Smith '30
Dr. Robert L. Smothers
Ambassador Mabel Smythe FS
Dr. Daniel J. Socolow
Mrs. Thelma Collins Spann '43
Dr. Clifton T. Sparks '48
Mrs. Mozell Spriggs
Mrs. Sylvia Beverly Stanford '56
Mrs. Dorothy Cain Stanton FS
(Deceased)
Mrs. Frances Brock Starms '38
Dr. Delores Betts Stephens '61
Mrs. Dorothy Myers Steptean '63
Mrs. Willie Reese Steward '28
Mrs. Ann Stewart
Mr. Elmer A. Stewart
Mrs. Emily Davis Stinson '54
Mrs. Lyda Larkins Stivers '49
Mrs. Juanita Sellers Stone '48
Miss Ernestine Sutton '51
Mrs. Annie Perry Swanson '56
Mrs. Roslyn Washington Sylvester
'59
Ms. Judy N. Tabb
Senator Herman Talmadge
Mrs. Marva B. Tanner
Dr. Horace E. Tate
Mr. & Mrs. Albert C. Tate, Jr.
Mrs. Evelyn Malone Taylor '51
Mrs. Gloria Cook Taylor '71
Mr. & Mrs. Mark K. Taylor
Mrs. Catherine Collins Terry '57
Mr. & Mrs. Floyd Thacker
Mrs. Johnnie Childress Thomas '36
Mrs. Lorraine Adams Thomas '32
Mrs. Vanessa Hamilton Thomas '71
Mrs. Vera Waters Thomas HS '21
Mrs. Ruth Hill Thompson '37
Mrs. Anna Hankerson Thornton
'62
Mrs. Emma Beaver Thurston '48
Mrs. Isabella McIntyre Tobin '45
Mrs. Clemmie Sanders Tolmaire '50
Mrs. Robbie Christler Tourse '63
Mrs. Carolyn Willis Trammell '63
Mrs. Yvonne Ketchum Trippett '52
Mrs. Rosalyn Johnson Truitt '71
Mrs. Ossie Smith Tuggle '54
Mrs. Jack P. Turner
Mrs. Minnie Pinson Turner '36
Mrs. Alice Hagans Turner '43
Miss Elsa A. Turner '19
Miss Katherine Tutt '74
Mrs. Birdie Gambrell Tyler '47
Mrs. Alma Upshaw
Mr. & Mrs. William G. Vance
Miss Erma C. Walker TPC '20
Mrs. Helen Rice Walker '43
Mrs. Patricia Carter Walker '59
Mrs. Rubye Sampson Walker '32
Mrs. Gladys Beverly Wallace '40
Mrs. Ansonia Campbell Walls '45
Mr. Charles H. Wardlaw

Mrs. Alice Holmes Washington '38
Mrs. Barbara Buckley Washington
'72
Miss Delo Washington '57
Miss Gloria Bibb Washington '49
Mrs. Mary Parks Washington '46
Mrs. Ruth Gandy Washington '48
Mrs. Geneva Hood Watson '59
Mrs. Grace Cocroft Watson '41
Miss Yvonne D. Weatherly '64
Mrs. Lillie Sirmans Weatherspool
'28
Mrs. Frances Glover Weaver '59
Mrs. Barbara Madden Webb '67
Mr. Larry Weltin
Mrs. Gwendolyn Jones West '71
Miss Mary Fannyette West '70
Mrs. Eunice Guy Weston '49
Ms. Mary E. Whaley FS
Mrs. Lula Lundy Whatley '44
Mrs. Mary Parker Wheeler '69
Dr. Zadie B. Whisenton
Mrs. Barbara Ingram Whitaker '52
Mrs. Alfred Ables White '45
Mrs. Priscilla Williams White '42
Mrs. Dollie Glover Whitehead '57
Mr. & Mrs. John Wieland
Mrs. Josephine Wilborn
Mrs. Wellie Smith Wilburn '52
Mrs. Lawana Davis Wilcox '39
Mrs. Eppie Mann Wilder FS
Mrs. Martha Mainor Wilkinson '41
Mrs. Annabella McGregor Williams
'43
Mrs. Annie McCrary Williams HS
'17
Mr. Benjamin J. Williams
Mrs. Catherine Walker Williams '36
Mrs. Effie Brown Williams '51
Dr. Eleanor Tubbs Williams '67
Mrs. Essie Lee Jones Williams FS
Mrs. Eva Griggs Williams '31
Dr. Grace Hale Williams AU '32
Mrs. Hattie Shannon Williams FS
Mrs. Josie Latimer Williams '47
Mrs. Louise Jackson Williams '73
Mrs. Maurice Mitchell Williams '50
Mrs. Mercuria Chase Williams '69
Miss Valjean Williams '64
Mrs. Vivian Stodghill Williamson
'57
Mrs. Alliene Horne Willis '61
Mrs. Catherine T. Willis FS
Mrs. Margaret Johnson Willis '31
Mrs. Mary DeBose Willis '31
Mrs. Clara Ivey Wilson '38
Mrs. Mae Clowney Wilson '47
Mrs. Rachel Davis Wilson '33
Mrs. Thomasine Duckett Wilson
'34
Mrs. Victoria Lark Wilson HS '21
Mrs. Yvonne Jackson Wiltz '57
Mrs. Glorinda Wade Wingfield '53
Mrs. Anne Nelson Wood '37
Mrs. Fannie Ballard Woodard '54
Mrs. Marilyn Miller Woodruff '76
Mrs. Evelyn Carroll Woods '67
Mrs. Katherine Few Wright '36
Mrs. Carolyn Hill Wyatt '53
Ms. Blanche I. C. Wynne FS
Mrs. Glorinda Stickland Yancey '56
Mrs. Muriel Ketchum Yarbrough
'49
Mr. Bernard D. Young
Mrs. Garnie Ison Young '32
Mrs. Naomi Berry Young FS
Mrs. Erienne Hare Young '35
Mrs. Camilla Smith Ziegler '71
Mrs. Katie Davis Zellars '65
Mr. & Mrs. Jerome Zimmerman

TRUSTEES

**Mr. Ivan Allen, Jr.
*Mr. C. Everett Bacon
***Mrs. Laura R. Chasin
**Mrs. Virginia Turner Dowell '47
Mrs. Marian Wright Edelman
'60
*Attorney Donald L. Hollowell
Mr. & Mrs. J. Seward Johnson
**Mrs. Joyce F. Johnson
***Mrs. Phoebe Franklin Lundeen
**Mrs. David H. McAlpin
*Ms. Elizabeth J. McCormack
Dr. Albert E. Manley
***Mrs. Gertrude Michelson
***Mr. Henry M. Minton
Miss Pamela D. Moore
***Mrs. Fred Patterson
Mrs. Mary H. Randolph
Mr. Fred B. Renwick
***Mr. & Mrs. Laurance S.
Rockefeller
Mr. Francis D. Rogers
Judge Elbert P. Tuttle
***Dr. & Mrs. Asa G. Yancey

HONOR ROLL BY CLASS YEARS (Alumnae)

COLLEGE GRADUATES

Class of '24

*Mrs. Essie Brooks Hammond
*Mrs. Troas Lewis Latimer

Class of '26

*Mrs. Theodora Fisher James
*Mrs. Genevieve Taylor Jordan

Class of '27

Mrs. Helen Green Holland
***Miss Camilla L. Howard
*Mrs. Lyda McCree Kennedy

Class of '28

*Mrs. Ernestine Erskine Brazeal
Mrs. Dennie Slaughter Hicks
***Dr. Mary Brookins Ross
*Mrs. Willie Reese Steward
***Mrs. Viola Branham Wardlaw
*Mrs. Lillie Sirmans Weatherspool

Class of '29

*Miss Thelma B. Brown
*Mrs. Alma Ferguson Crockett
*Mrs. Sadie Brown Gibson
*Mrs. Irene Dobbs Jackson
*Mrs. Myrtle Clarke Lumpkin
**Mrs. Gaston Bradford Moseley
Mrs. Eunice Roberts Pardue
*Mrs. Alice Webster Reid
*Mrs. Retha Jackson Shelton
*Mrs. Naomi Shocklin Smith
***Mrs. Estelle Bailey Webster

Class of '30

*Mrs. Lois Davenport Fambro
*Mrs. Evelyn Green Freeman
*Mrs. Allie Allen Lilly
*Mrs. Myrtle Lagard Purnell
*Mrs. Johnnie Hadley Reynolds
(Deceased)
*Mrs. Samantha Howard Smith

Class of '31

*Mrs. Willie Dobbs Blackburn
*Mrs. Mabel Dockett Evans
Mrs. Alma Long Gray
***Mrs. Florence Morrison Hogan
Mrs. Mamie Cabaniss Hubert
**Mrs. Eddielena Haynes
Littlejohn
*Mrs. Eva Griggs Williams
(Deceased)
*Mrs. Margaret Johnson Willis
*Mrs. Mary DeBose Willis

Class of '32

*Mrs. Gleaner Simmons Atkins
*Mrs. Louise Gray Coles
Mrs. Ida Jones Curry
Mrs. Augusta Johnson Green
*Mrs. Sallie Lumpkins Hopson
*Mrs. Ernestine Anthony
Lipscomb
Mrs. Jamie Gaither Martin
Mrs. Inez Dumas McClarin
Mrs. Annie Lee Robinson
*Mrs. Lorraine Adams Thomas
*Mrs. Rubye Sampson Walker
*Mrs. Garnie Ison Young

Class of '33

Mrs. Janie Banks Bolton
*Mrs. Margaret Singleton Brown
*Mrs. Loyce Willis Bynum
**Mrs. Maenelle Dixon Dempsey
*Mrs. Alpa Tally English
*Mrs. Grace Ross Haynes
*Miss Dorothy E. Hornsby
*Mrs. Millicent Dobbs Jordan
Mrs. Josephine Harrelld Love
*Mrs. Frankie Butler Outten
*Miss Evelyn Larue Pittman
*Mrs. Cora Douthard Smith
*Mrs. Rachel Davis Wilson

Class of '34

*Mrs. Lois Greenwood Bailey
*Mrs. Prudence Arnold Bussey
*Mrs. Gladys Starling Crockett
*Mrs. Mary Menafee Gavin
*Dr. Virginia R. Hannon
*Mrs. Edna Douthard Hubbard
*Mrs. Ethel Alexander Hudson
*Mrs. Clara Stanton Jones
*Miss Alice G. Lomax
*Miss Ernestine May
*Mrs. Thomasine Duckett Wilson

Class of '35

*Miss Fannie Louise Allen
Mrs. Lucille Pearson Burton
*Mrs. Ethelynde Armstrong
Engram
*Mrs. Florrie Jackson Forbes
*Mrs. Elva Thomas Foster
Mrs. Mary Williams Griggs
*Mrs. Fanny Smith Hayes
*Miss Lula Thomasine Jones
*Mrs. Lucile Palmer Perrino
Mrs. Gladys Williams Powell
Miss Billie Reed
*Mrs. Ruby Nelson Riley
*Miss Marguerite F. Simon
*Mrs. Carrie Adams Smith
*Mrs. Erienne Hare Young

Class of '36

*Ms. Ednah B. Blalock
Mrs. Dorothy Williams Brice
*Mrs. Roseland Dixon Caldwell

**Mrs. Lorraine Dixon Caviness
 *Mrs. Mattie Hardy Collins
 **Mrs. Rosebud Brown Dixon
 **Mrs. Cornelia McGowan Easley
 **Mrs. Madelyn Gray Golightly
 *Mrs. Jamie Reddick Graham
 **Mrs. Juanita Reddick Hill
 *Mrs. Ruth Westmoreland Hume
 **Ms. Elizabeth J. Macomson
 *Mrs. Helen Andrews Martin
 **Mrs. Celestine Davenport Pettrie
 *Miss Johnnie S. Price
 **Mrs. Birdie Wallace Robinson
 *Mrs. Frances Brock Starns
 **Mrs. Genevieve Wheeler Thomas
 *Mrs. Johnnie Childress Thomas
 *Mrs. Minnie Pinson Turner
 *Mrs. Catherine Walker Williams
 *Mrs. Katherine Few Wright

Class of '37

*Mrs. Helen Bell Brooks
 *Mrs. Josephine Dobbs Clement
 ***Miss Emily America Copeland
 *Mrs. Countess Young Cox
 *Mrs. Edwina Westmoreland Ford
 *Mrs. Helen Wingood Fullilove
 *Mrs. Lurlene Baker Garland
 **Mrs. Clarie Collins Harvey
 *Mrs. Mary Patterson Houston
 Mrs. Lula Weeder Jacobs
 ***Mrs. Mayme Martin King
 *Miss Claudine L. Leigh
 *Mrs. Emistine Sellers Lyons
 *Mrs. Jennie M. Marshall
 *Mrs. Wilhelmina C. Rhetta
 *Mrs. Connie Spencer Sabbath
 Mrs. Ruth Scott Simmons
 *Mrs. Lottie Echols Simon
 Mrs. Carlene Goudy Thomas
 *Mrs. Ruth Hill Thompson
 Mrs. Leolive Watts Tucker
 *Mrs. Annie Nelson Wood

Class of '38

*Mrs. A. Celestine Taylor Billings
 Mrs. Frankie Smith Boyd
 *Mrs. Jennie Pritchard Branham
 *Mrs. Lillian Davis Bussey
 *Mrs. Mary Adams Davis
 *Mrs. Rosalie Jefferson Gilbert
 ***Mrs. Minnie Felton Jackson
 *Mrs. Mexico Hembree
 Mickelbury
 Mrs. Addie Griffin Owen
 *Mrs. Mildred Sneed Pierro
 *Mrs. Dovey Johnson Rountree
 *Mrs. Dorothy Hamilton Sanders
 Mrs. Helen Baker Simmons
 Miss Alberta E. Thomas
 *Mrs. Alice Holmes Washington
 Mrs. Madge Hughes Washington
 *Mrs. Clara Ivey Wilson

Class of '39

*Mrs. Doris Gomillion Alexander
 *Mrs. Eunice Freeman Benton
 (Deceased)
 *Mrs. Anne Thomas Braxton
 Mrs. Annie Lowe Davis
 *Miss Ineze DeVaughn
 *Mrs. Margaret Creagh Evans
 *Mrs. Lillie Williams Flenory
 *Mrs. Ethel Harvey Georges
 *Mrs. Sarah Jones Hayden
 Mrs. Dorothea Boston Jackson
 Mrs. Marjorie Gaines King
 *Mrs. Artholia Heard Milligan
 *Mrs. Kathlyn Johnson Moses

*Mrs. Bernry Hardwick Nelson
 *Mrs. Julia Williams Palmer
 *Mrs. Willie Martin Perkins
 *Mrs. Zelma Thomas Peters
 *Mrs. Evelyn House Scrotchings
 *Mrs. Lawana Davis Wilcox
 **Miss Ida Wood

Class of '40

Mrs. Marjorie Ramey Adams
 *Mrs. Laura Hill Anderson
 Mrs. Gladys Holloway Clark
 *Mrs. Franzetta Williams Durant
 Dr. Gladys Inez Forde
 *Dr. Julia McKinney Glass
 *Mrs. Julia Terry Hamilton
 *Mrs. Helen Walker Harden
 **Mrs. Glenna Stewart Hayes
 ***Dr. Grace L. Hewell
 *Mrs. Gwendolyne Holland
 Hunter

*Miss Althea V. Morton
 Mrs. Dorothy Eberhardt Neal
 *Mrs. Lula Belle Pierro
 *Mrs. Gladys Beverly Wallace

Class of '41

*Mrs. Sadie Sims Allen
 *Mrs. Rosa Hill Brown
 *Mrs. Mary Brown Buggs
 *Miss Penelope L. Bullock
 *Ms. Manya Russell Carter
 Miss Ruby B. Dooley
 Mrs. Jean Warren Granger
 *Mrs. Ruth Redmond Hall
 *Mrs. Rutha Watson Jack
 Mrs. Harriet Towns Jenkins
 Mrs. Vivian Hunt Johnson
 Mrs. Princess Jones McElderry
 *Mrs. Verta Carter Owens
 Mrs. Mary Gordon Powell
 *Mrs. Naomi Stith Queen
 *Mrs. Evelyn Seace Quivers
 Mrs. Bernice Felton Rainbow
 *Mrs. Grace Cocroft Watson
 *Mrs. Martha Mainor Wilkinson
 Mrs. Evelyn Wright Young

Class of '42

Mrs. Malissa Kilgore Briley
 *Mrs. Eleanor Bell Coote
 *Miss Harriett Ruth Cunningham
 *Mrs. Myrtle Bowers Davis
 *Mrs. Georgia Smith Dickens
 Mrs. Henrietta Powell Dunn
 Mrs. Charlotte Carter Green
 *Mrs. Lula Smith Hanks
 *Dr. Dorothy Johnson Hunt
 **Mrs. Antoinette Drake Clifford
 Kindall
 Mrs. Rae Jamison Marks
 *Mrs. Evelyn Ebbs May
 *Mrs. Rachel Cobb McMillan
 Dr. Helen E. Nash
 *Mrs. Mary Gaines Parker
 *Mrs. Jennie Strickland Partee
 Mrs. Hilda D. Stewart
 *Mrs. Priscilla Williams White

Class of '43

*Mrs. Annie Waller Berlack
 *Miss Doris A. Blayton
 *Miss Trudie O. Brunson
 *Mrs. Mozelle Dailey Clemmons
 Mrs. Austella Walden Colley
 *Mrs. Martha Brock Crews
 *Mrs. Marilyn Green Epps
 *Mrs. Ida Russell Gary

*Mrs. Mary Yancey Gay
 *Mrs. Sadye Conley Gibson
 *Mrs. Ernestine Wallace Gipson
 *Mrs. Louise Roper Hicklen
 Mrs. Eleanor Latimer Hines
 *Mrs. Anna Lanon Johnson
 *Miss Elizabeth G. King
 Mrs. Helen Robinson Nunley
 *Mrs. Antoinette Mainor Olive
 Miss Anna L. Ross
 *Mrs. Lavada Johnson Smith
 *Mrs. Thelma Collins Spann
 *Mrs. Alice Hagans Turner
 *Mrs. Helen Rice Walker
 *Mrs. Annabelle McGregor
 Williams
 Mrs. Cora Appleby Williams

Class of '44

*Miss Ella Mae Billups
 Mrs. Eleanor Blackshear Fryer
 Mrs. Cleo Ingram Hale
 *Mrs. Marie Lauray Jackson
 *Mrs. Willie Sherwood Johnson
 Mrs. Del Eagan Jupiter
 *Mrs. Geneva Higgins McGee
 *Mrs. Dorothy Hood Oliver
 *Mrs. Norma Payton Reid
 *Mrs. Lula Lundy Whatley
 Mrs. Jessye Croom Young

Class of '45

*Miss Sibyl L. Anderson
 *Mrs. Ernestine Brooks Banks
 Miss Genelle Barner
 *Mrs. Doris Daniels Bryant
 *Mrs. Fannie Dukes Bryant
 *Mrs. Madeline Patterson Cargill
 *Mrs. Margaret Anderson
 Freeman
 Mrs. Helen Barnett Humphrey
 *Mrs. Annie Brown Kennedy
 *Mrs. Juanita Hudson Scott
 Mrs. Marian Willis Scott
 *Mrs. Ernestine Latson Smith
 *Mrs. Isabella McIntyre Tobin
 *Mrs. Ansonia Campbell Walls
 *Mrs. Alfred Ables White
 ***Ms. I. Margaret White

Class of '46

*Mrs. Katherine Goodman Bigby
 Mrs. Selonia Smith Blatch
 Mrs. Joyce Cooper Bobo
 *Mrs. Alyce Smith Dodson
 *Miss Annette V. Evans
 *Mrs. Henrietta Houston Harper
 *Mrs. Ruth Davis Hawk
 Miss Johnnie C. Hogg
 Mrs. Thelma Freeman Hurley
 *Mrs. Mattiwilda Dobbs Janzon
 *Mrs. Dora Kennedy Johnson
 *Miss Susie M. Mays
 Mrs. Anna Taylor McCall
 *Mrs. Sacia Ross Pandley
 *Mrs. Gussie Davis Phillips
 Mrs. Marjorie Franklin Ramey
 *Mrs. Ethel Boykin Robinson
 *Mrs. Grace McKivey Scipio
 *Miss Pauline L. Shields
 *Mrs. Josephine Jackson Smith
 Mrs. Ivey Williams Tucker
 *Mrs. Mary Parks Washington

Class of '47

Mrs. Diane Mattison Anderson
 Mrs. Amanda Keith Bailey
 *Mrs. Leanora Butler Davis

*Mrs. Hatti Marie Parks Davis
 *Mrs. Bennie Tillman Dorsey
 **Mrs. Virginia Turner Dowell
 Mrs. Daisy Phinazee Harris
 *Mrs. Ernelle Combs Hughes
 *Mrs. Billye Jones Johnson
 *Mrs. Virginia Entzminger
 Longino
 *Mrs. Muriel Brown Pearson
 *Dr. Aurelia D. Robinson
 *Mrs. Genevieve Lawless Short
 *Miss Carolyn O. Smith
 *Mrs. Birdie Gambrell Tyler
 *Mrs. Josie Latimer Williams
 Mrs. Evelyn Moore Williams
 *Mrs. Mae Clowney Wilson

Class of '48

*Mrs. Pearl Melvee Bellinger
 Ms. Ruth M. Bullock
 *Dr. June Dobbs Butts
 *Mrs. Jacqueline Larkins Crook
 *Mrs. Gloria Davis Dent
 *Mrs. Christine King Farris
 *Dr. Eleanor Ison Franklin
 *Mrs. Gertrude Davis Fuller
 *Mrs. Priscilla White McGaughey
 Mrs. Carrie Locke Rumph
 *Dr. Clifton T. Sparks
 *Mrs. Juanita Sellers Stone
 *Mrs. Emma Beavers Thurston
 *Mrs. Ruth Gandy Washington
 Mrs. Irene Moore Wright

Class of '49

***Dr. Ernestine Walker Baylor
 *Mrs. Elise Dunn Cain
 Mrs. Helen Roberts Campbell
 *Mrs. Doris Perry Carter
 *Mrs. Ruby Woods Carter
 *Mrs. Evelyn Willis Chisolm
 *Mrs. Ruby Singleton Cooke
 *Mrs. Emmalynn Jenkins Deal
 *Mrs. Marymal Morgan Dryden
 *Mrs. Ella Gaines Yates-Edwards
 *Mrs. Lavaugh Force Elkins
 Mrs. Mary Young Gerald
 *Mrs. Gwendolyn Fields Halls
 *Mrs. Elizabeth Yorke Holloway
 *Mrs. Emma Stone Jeffries
 *Mrs. Doris Thompson McCollum
 *Mrs. Sue Pertect Morris
 *Judge Harriet Mitchell Murphy
 *Mrs. Rosalie Slack Peterson
 *Mrs. Marjorie A. Ricks
 *Mrs. Manderline Willis Scales
 *Mrs. Georgia Atkins Smith
 *Mrs. Lyda Larkins Stivers
 *Mrs. Gloria Bibb Washington
 *Mrs. Eunice Guy Weston
 *Mrs. Muriel Ketchum Yarbrough

Class of '50

*Mrs. Wilma Jaymes Anderson
 *Mrs. Elizabeth Lee Atkinson
 *Mrs. Dorothy Zellner Brown
 *Mrs. Inez Nappier Faniel
 Mrs. Anna Maxwell Gray
 Mrs. Lillian Carter Lawton
 Mrs. Catherine Wilson May
 *Mrs. Alma Blanton Roundtree
 *Mrs. Clemmie Sanders Tolmaire
 *Mrs. Maurice Mitchell Williams

Class of '51

*Mrs. Fannye Hopkins Banks
 *Mrs. Leatrice Traylor Bell
 *Mrs. Dorothy Ross Bowie

*Mrs. Ophelia Conley Boyd
 *Dr. Juanita Collier
 *Mrs. Marjorie Vaughn Crawford
 *Mrs. Helen Martin DeLara
 *Miss Dorothy L. DeVillars
 *Mrs. Coltilda Daniels Diggs
 *Mrs. Della Foster Gill
 *Mrs. Vivian Bailey Grier
 *Mrs. Freida McGhee Hampton
 *Mrs. Emma Lyons Hardnett
 *Mrs. Gwendolyn Horton Hicks
 *Dr. Wilmotine B. Jackson
 *Ms. Calafra Eloise Johnson
 *Mrs. Louise Hembree Larkin
 ***Mrs. Mignon Lackey Lewis
 *Mrs. Charlotte Knowles Mays
 *Mrs. Elaine Bush McCann
 *Mrs. Mildred Wynn Penson
 *Mrs. Beulah Graham Smith
 *Miss Ernestine Sutton
 *Mrs. Evelyn Malone Taylor
 *Mrs. Effie Brown Williams

Class of '52

*Mrs. Josephine Felton Alexander
 *Mrs. Annie Elston Berry
 ***Mrs. Joy Walker Brown
 *Miss Bettye J. Crockett
 *Mrs. Elizabeth Latimer Dawson
 *Mrs. Lola Blasingame Evans
 Mrs. Jean Shy Farris
 *Mrs. Shirley Statom Henderson
 *Mrs. Bessie Washington Jones
 *Mrs. Dorothy Cole King
 *Mrs. Pauline Mackey Love
 *Mrs. Hazel Rucker Moore
 Mrs. Doris Moultrie Moss
 *Mrs. Dorothy Mapp Pleasant
 Mrs. Bess Nixon Reynolds
 *Mrs. Yvonne Ketchum Trippett
 *Dr. Barbara Ingram Whitaker
 Mrs. Gracie Coleman White
 *Mrs. Wellie Smith Wilburn
 Mrs. Jacqueline Kirby Wills

Class of '53

*Dr. June McDonald Aldridge
 *Mrs. Wylma White Barnett
 *Mrs. Helen Brookins Bell
 *Miss Betty J. Blasingame
 Mrs. Hazel Hargrove Brown
 *Mrs. Ruth Harvey Brown
 *Miss Jean LaRue Foster

*Mrs. Jean Wright Greenblatt
 Mrs. Dorothy Whited LeBlanc
 *Mrs. Jacqueline Wellington Moore
 *Mrs. Johnnye Wilson Vinson
 *Mrs. Gloria Wade Wingfield
 *Mrs. Carolyn Hill Wyatt

Class of '54

Mrs. Ora Sterling Anderson
 Mrs. Emma Jackson Bell
 ***Dr. Juel Pate Borders-Benson
 *Mrs. Gloria Price Bryant
 *Mrs. Ruth Minor Crawford
 *Mrs. Carrie Laster Dothard
 Mrs. Phyllis Dansby Fisher
 Mrs. Gwendolyn Walker Garrison
 *Mrs. Dorothy Gulley Greene
 *Miss June T. Martin
 *Mrs. Rosetta Hicks Peterson
 *Mrs. Gloria Gardner Rosemond
 *Mrs. Emily Davis Stinson
 *Mrs. Ossie Smith Tuggle
 Mrs. Neeka Garrison Washington
 *Mrs. Fannie Ballard Woodard

Class of '55

Mrs. Altona Johns Anderson
 *Dr. Kathryn Brown Brisbane
 Mrs. Lynette Fields Byrom
 Mrs. Evelyn Cooper Campbell
 *Mrs. Lillian McKinney Cooley
 *Mrs. Essie Jewell Eason
 Mrs. Margaret Beverly Hancock
 Mrs. Ruby Jones Leaphart
 Mrs. Joan Farris McTeer
 *Mrs. Erin Goseer Mitchell
 Mrs. Thomasenor Walker Pearson
 Mrs. Aserelene Parker Pickett
 *Mrs. Elsie Mallory Smith

Class of '56

*Mrs. Catherine Minor Allen
 Mrs. Vivian Clements Baldwin
 Mrs. Barbara Atkinson Barham
 Mrs. Barbara Calhoun Blount
 *Mrs. Gloria Strong Boyd
 *Dr. Ida Brownlee Bragdon
 *Mrs. Bernice Woolfolk Bufford
 *Dr. B. LaConyea Butler
 *Mrs. Geraldine Manley Cheek

*Mrs. Dorothy Gibson Cobb
 *Miss Constance M. Craig
 *Mrs. Betty Lovett Dabney
 *Dr. Rita Dixon
 *Mrs. Margaret Jones Few
 *Mrs. Gene Gary-Williams
 *Mrs. Katherine T. Glass-Kelly
 *Mrs. Darlene Yarbrough Glover
 **Mrs. Alexine Clement Jackson
 Mrs. Helen Calloway Jackson
 *Mrs. Julia Ponder Johnson
 Mrs. Gwendolyn Gilley Johnson
 Mrs. Mable Lumpkins Johnson
 *Mrs. Jean Clark Kelly
 *Miss Rosa L. Nichols
 Mrs. Edna Jarrett Pagan
 *Mrs. Bertha McGuire Patmon
 *Mrs. Doris Patterson
 *Mrs. Juanita Scott Patton
 **Mrs. Patricia Moody Pearsall
 *Mrs. Susie Blasingame Pearson
 *Mrs. Magdalene Terrell Perry
 *Mrs. Selie R. Ratchford
 Mrs. Mary Morton Render
 *Mrs. Fay Wise Ross
 Mrs. Carolyn Bailey Rushin
 *Mrs. Sylvia Beverly Stanford
 Mrs. Geraldine Patterson Stephens
 *Mrs. Annie Perry Swanson
 Mrs. Doris Robinson Van Putten
 Mrs. Gene Gary Williams

***Miss Hulda A. Wilson
 Mrs. Mildred Worthly
 *Mrs. Gloria Strickland Yancey

Class of '57

Mrs. Sheila Sheftall Barnes
 Mrs. Agnes Blasingame Batey
 Mrs. Renelda Cross Belcher
 *Mrs. Ruby Handspike Clay
 *Mrs. Gladys Arnold Draper
 Mrs. Barbara Manley Fonville
 *Mrs. Elizabeth Bryan Fortson
 *Mrs. Rosa Rice Hadley
 Mrs. Harvenia Hill
 *Mrs. Rose Harris Johnson
 *Mrs. Shirley Hanks Leaphart
 Mrs. Fannie B. Malone-Nash
 *Mrs. Ernestine Miles Mann
 *Mrs. Betty Whited Robinson
 *Mrs. Catherine Collins Terry
 *Dr. Delo Washington
 *Mrs. Dollie Glover Whitehead
 *Mrs. Vivian Stodghill Williamson
 *Mrs. Yvonne Jackson Wiltz

Class of '58

*Mrs. Juliet Blackburn Beamon
 *Mrs. Helen Bartlett Chatman
 *Dr. Pauline E. Drake
 *Mrs. Pearline Adamson Davis
 *Mrs. Shirley McGee Fannings
 Mrs. Minnie McFadden Finch
 *Mrs. Gladys Glass
 Dr. Shirley Larkins Green
 *Mrs. Janet Webster Jones
 *Mrs. Peggy Jones Martin
 Mrs. Rosalyn Mitchell Patterson
 Mrs. Helen Sawyer Plump
 *Miss Dentye M. Smith

Class of '59

Mrs. Roedean Strong Anderson
 Mrs. Minnie Alderman Barnes
 *Mrs. Jacquelyn Johnson Bolton

*Mrs. Jacquelyn Smith Demons
 Mrs. Evelyn Ingram Dorsey
 *Mrs. Julia Martin Gilmore
 Mrs. Gloria Miller Hudson
 Mrs. Marilyn Francis Krigger
 Mrs. Anna Bell Olive
 Mrs. Ara Yates Patridge
 Mrs. Dorothy Coleman Peay
 Mrs. Margaret Rucker Sheftall
 Miss Eva Stroud
 *Mrs. Roslyn Washington Sylvester
 Mrs. Dorothy Robinson Tucker
 Mrs. Betty Stephens Walker
 *Mrs. Patricia Carter Walker
 *Mrs. Geneva Hood Watson
 *Mrs. Frances Glover Weaver
 Mrs. Yvonne Robinson Winfrey

Class of '60

Mrs. Celestine Bray Bottoms
 *Mrs. Gloria Watts Davis
 Mrs. Marian Wright Edelman
 Mrs. Barbara Parks Hendricks
 Mrs. Wilfred Jackson Hughey
 Mrs. Louise Smith Jones
 Mrs. Eva Thomas Kinsey
 *Mrs. Henrietta Reid Lundy
 Mrs. Carolyn Dawson McLemore
 *Mrs. Roslyn Pope-Sturgis

Class of '61

Mrs. Lillian Williams Ellis
 Mrs. Gloria Banks Ewings
 *Mrs. Faith Neal Hemphill
 *Mrs. Eva Lowe Hollingsworth
 *Dr. Virginia Brown Lockhart
 Mrs. Margie Durrack McIver
 *Dr. Gwendolyn Middlebrooks
 *Mrs. Anne Borders Patterson
 *Mrs. Lola Roberts Richards
 Miss Doris L. Shelby
 *Dr. Delores Betts Stephens
 ***Mrs. Myra Smith Taylor
 Ms. Eleanor J. Tinnon
 Mrs. Carolyn Stinson Traylor
 Mrs. Gwendolyn Lawson Williams
 *Mrs. Alliene Horne Willis

Class of '62

*Dr. Patricia White Chatard
 Mrs. Alma Willis Dunn
 *Mrs. Jean Wilborn George
 Mrs. Annette Hightower Huffman
 Mrs. Henrietta Laster Jones
 Mrs. Joyce Pitts Rogers
 Mrs. Vivien Shivers Stocks
 *Mrs. Anna Hankerson Thornton

Class of '63

Mrs. Jean Berrien
 Mrs. Jeannette Tarver Carter
 *Mrs. Brenda Hill Cole
 Mrs. Louise Davenport
 *Miss Bettie J. Durrah
 *Mrs. Mignon Henry Geiger
 Mrs. Lessie Jackson McMillan
 *Dr. Ann Ashmore Poussaint
 *Mrs. Dorothy Myers Stepteau
 *Mrs. Robbie Christler Tourse
 *Mrs. Carolyn Willis Trammell
 Mrs. Phyllis Umstead Walker

Class of '64

Mrs. Marilyn Abdel-Alim



African Parents — Proud parents, Mr. and Mrs. Frederick Alade, came all the way from their home in Surulere, Lagos Nigeria, to share the Centennial Commencement with their daughter Olatorera Alade (center).

Mrs. Alice Morgan Grant
 Mrs. Wendolyn Murphy Harding
 Mrs. Royalene Calhoun Hollis
 *Mrs. Charlotte Mize Johnson
 *Miss Edna L. Johnson
 Mrs. E. Joyce White Mills
 *Mrs. Laura Akridge Morgan
 Mrs. Edwina Palmer
 Mrs. Constance Dye Thomas
 *Miss Yvonne D. Weatherly
 *Miss Valjean Williams
 Mrs. Ridgely Renwick Worthly

Class of '65

Mrs. Barbara Henry Ferguson
 Ms. Mary Jane Hendrix
 Mrs. Millicent Gamble Jackson
 *Mrs. Vernyce Card Jenrette
 *Mrs. Leronia Stokes Josey
 *Mrs. Julia Allen Mitchell
 Dr. Velma Charles Shannon
 *Mrs. Mary Dupree Sherman
 *Mrs. Katie Davis Zellars

Class of '66

Miss Maude Brown
 Miss Helen Carithers
 *Dr. Juanita Robinson Carter
 *Mrs. Beverly Carroll Daniel
 *Mrs. Carolyn Reynolds Daniel
 *Mrs. Victoria Joyner Freeman
 *Mrs. Berlyn Chatard Hargrett
 *Mrs. Linda Hayes King
 *Miss Geraldine E. P. Lyons
 *Ms. Carolyn Odom
 Mrs. Connie Curry Phipps
 *Mrs. Judith Fennell Ruffin
 *Miss Camille A. Smith
 *Mrs. Charlie Gardner Smith
 Mrs. Gloria Travis Tapera

Class of '67

Miss Joyce J. Akridge
 *Mrs. Jacquelyn Kirby Boyette
 Mrs. Rosalind Harris Brown
 Mrs. Connie Johnson Cole
 Mrs. Bernita McMillan Cook
 *Mrs. Frances Dyer Cooke
 Mrs. Debra Houston Edwards
 *Mrs. Mary Kidd Gardner
 *Mrs. Berdie Ricks Hardon
 Mrs. Regenia Hughes Ingram
 Mrs. Bernice Dowdy McDaniel
 Mrs. Joyce Hunter Mills
 *Mrs. Dorethea Morton Mobley
 *Mrs. Vernistine Bynes Murphy
 *Miss Angelique Pullen
 Mrs. Helen Wade Stroud
 *Mrs. Barbara Madden Webb
 *Dr. Eleanor Tubbs Williams
 *Mrs. Evelyn Carroll Woods

Class of '68

*Mrs. Jacqueline Williams Biggins
 Mrs. Johnetta Cross Brazzell
 *Mrs. Barbara Anthony Brown
 *Dr. Jane Smith Browning
 *Miss Stephanie Bush
 *Mrs. Herlena Harris Byrd
 *Mrs. Diane Clark Caesar
 *Mrs. Anita Woods Cook
 Mrs. Sandra Hall Cummings
 *Miss Linda B. Hammett
 *Dr. Freddie L. Hill
 *Mrs. Shirley Barber James
 *Mrs. Patricia Hill Mitchell
 Mrs. Laura Burton Odem
 Mrs. Cheryl Summers Ransom

*Mrs. Dianne Stevenson Roberson
 ***Mrs. Joan Taylor Sanders
 Mrs. Shirley Pompey Sheats
 Mrs. Willie Mae Smith Sheftall

Class of '69

Miss E. Yvonne Beauford
 Mrs. Dorothy Morton Brown
 *Mrs. Sharon Pierro Burks
 Mrs. Bonnie Bohannon Cloud
 *Mrs. Delores Parker Crockett
 *Mrs. Barbara Forte Dixon-Guess
 Mrs. Carolyn Potts Foreman
 Mrs. Brenda Smith Jackson
 *Mrs. Cynthia Brown Jenkins
 Mrs. Norma Finch Jenkins
 ***Dr. Shirley Marks-Brown
 *Mrs. Wanda Long Matthews
 *Mrs. Delores Yancey Myers
 Miss Beverly Y. Simons
 *Mrs. Mary Parker Wheeler
 *Mrs. Mercuria Chase Williams

Class of '70

Miss Bettye J. Atkinson
 *Miss Theresa A. Chandler
 Mrs. Myrtice Hall Curtis
 Ms. Joyce J. Dorsey
 Mrs. Glenda Stevens Foy
 *Mrs. Ernestine Steward Gray
 Mrs. Rosa King Kilpatrick
 Mrs. Maria Sims Lay
 *Miss Pamela J. Lewis
 Mrs. Gwenelle Styles O'Neal
 *Dr. Bentley Patterson-Harper
 *Dr. Jacqueline Jones Royster
 *Dr. Sandra A. Sims
 *Mrs. Marquelyn Jackson Smith
 Mrs. Kathy Bailey Smith
 Mrs. Glenda Stevens
 Mrs. Pearl Perkins Watkins
 Mrs. Yvonne Jackson Watson
 *Miss Mary Fannyette West

Class of '71

*Miss Brenda S. Banks
 Mrs. Natalie Kennedy Beard
 Mrs. Patricia Reeder Bradford
 Dr. Eugenia Davis Clements
 *Mrs. Yolande Owens Creecy
 Mrs. Loretta Blackwell Darling
 Miss Linda M. Dicks
 Mrs. Gertrude Baker Dixon
 Miss Flora Feggins
 *Miss Thelma Fuqua
 *Ms. Pamela Y. Garrett
 *Mrs. Charlyn Harper-Bolton
 Miss Carol Ann Harris
 *Mrs. Bernadette Weston
 Hartfield
 Mrs. Sheryl Graham Houston
 *Mrs. Gloria Smith Humphrey
 *Mrs. Doris Sims Johnson
 *Miss Beryl Graham Kalisa
 Mrs. Maria Sims Lay
 *Mrs. Wanda Smalls Lloyd
 Mrs. Wanda M. Mabry
 *Mrs. Pamela Weston McCrae
 Mrs. Cynthia Knight McDaniel
 *Mrs. Constance Buckins
 McGuire
 *Mrs. Roseland Yancey McLarin
 Mrs. Gwendolyn McLendon
 Miller
 Mrs. Wylene Branton Moore
 Mrs. Richie Brown Morris
 Mrs. Sibyl Moses
 Mrs. Millicent Drake Norman

*Mrs. Sandra Hendrix Penn
 *Mrs. Deirdre Pate Pierce
 *Ms. Sayde W. Potter
 Mrs. Daisy Mitchell Ross
 *Mrs. Amiyah Shabazz
 *Mrs. Beverly Brown Shaw
 Mrs. Gloria Price Smith
 Mrs. Gloria Curry Tatum
 Mrs. Karen Miller Tatum
 *Mrs. Gloria Cook Taylor
 *Mrs. Vanessa Hamilton Thomas
 *Mrs. Rosalyn Johnson Truitt
 Mrs. Margaret Finch Warren
 *Mrs. Gwendolyn Jones West
 Mrs. Gloria Hendricks Williams
 Miss Roberta Wolfe
 Mrs. Anita Smith Woods
 Mrs. Sherry Davis Young
 *Mrs. Camilla Smith Zeigler

Class of '72

Mrs. Jehan Abdur-Rashid
 *Mrs. Sibyl Sims Carley
 *Miss Alice Deck
 Miss Tamara M. Deplanter
 *Miss Rachel Grier
 Mrs. Gwendolyn Hammonds
 Harris
 Mrs. Chorsie Wright Mattox
 Miss Millicent G. Mitchell
 *Mrs. Tanya Coleman Seidu
 Mrs. Debra Jordan Talliferro
 Mrs. Cheryl Phillips Taylor
 *Mrs. Barbara Buckley
 Washington

Class of '73

Mrs. Juanita Law Barnes
 Miss Ethyl Sue Bigby
 *Mrs. Annette Hutchins-Felder
 Mrs. Jacqueline Rushing
 Blackwell
 Mrs. Mary Glenn Forbes
 Miss Laura R. Foxx
 Mrs. Harriett Miller Halmon
 Miss Verne Patrice Jack
 *Mrs. Deborra Watts James
 Mrs. Marilyn Nichols Knight
 Mrs. Charlene White Latson
 Mrs. Sheila Hamilton Louder
 Mrs. Audrey Chisolm Magee
 *Mrs. Veloisa Tate March
 *Mrs. Karen Billings Mauldsby
 *Miss Delores L. McCollum
 *Miss Emma D. Roberts
 *Mrs. Louise Jackson Williams

Class of '74

*Miss Patricia D. Arbor
 *Miss Beverly L. Branton
 Miss Arletta T. Brinson
 Miss Brenda R. Bryant
 *Miss Paula Caruthers
 *Mrs. Sarah Jones Hayden
 Miss Patrice A. Hinnant
 *Mrs. Karen Lodrig Merritt
 *Miss Mable L. Millner
 *Miss Shirley Montgomery
 *Dr. Diane Moseberry
 Ms. Gail P. Owens
 *Miss Ivy Prout
 Miss Deborah Ann Robinson
 Mrs. Lillian Vaughan Robinson
 *Miss Donna J. Smith
 Mrs. Lisa Stamper-Ponton
 *Miss Katherine Tutt

Class of '75

*Mrs. Blanche P. Clardy
 *Miss Bernadette Y. Dickinson
 Miss Deborah Finley
 Mrs. Jeanne Primus Johnson
 Mrs. Romona Ingram Jones
 Mrs. Deborah Prothrow-Stith
 Mrs. Pamela Hampton Wells
 Mrs. Adena Smith Wright

Class of '76

Mrs. Ramona Bardwell Bigham
 *Miss Catherine Bland
 Miss Josephine Bryant
 Miss Sharon Cribbs
 Miss Erie Gray Davis
 *Miss Jeta Lynn Edwards
 *Ms. Teresa D. Edwards
 Mrs. Margaree Cheek Fant
 Miss Brunetta R. Garrard
 Ms. Teri D. Johnson
 Mrs. Patricia DeBerry Kelley
 Miss Tina Maria McBride
 Mrs. Sondra Rhoades McClure
 Miss Andrea V. Mills
 *Mrs. Jeania Jones Mitchell
 *Ms. Zinora M. Mitchell
 Miss Rosemarie Morse
 Ms. Sharon E. Owens
 Miss Silvana D. Revis
 Miss Susan M. Washington
 Mrs. Vicki Daniels
 Weatherspoon
 Miss Pamela Y. Williams
 *Mrs. Marilyn Miller Woodruff

Class of '77

Miss Michelle Patrice Bryant
 Miss Mary Lynne Diggs
 *Mrs. Cynthia Guthrie Johnson
 Mrs. Robin Jones-Watson
 Miss Barbara E. McNeely
 Miss Carolyn Shadd
 Miss Denise M. Sutton

Class of '78

Miss Lynne M. Abercrombie
 Mrs. Sandra Scales Bell
 Miss Deborah L. Dallam
 Mrs. Valencia Ishman Dillard
 Miss Doleda Jackson
 Miss Jessie R. Jackson
 Mrs. Gwendolyn Jackson
 McMillan
 Ms. Indra Devar Niles
 *Miss Carole H. Riley
 *Miss Kimberly Shepard
 Miss Sharon R. White
 Miss Pamela J. Wilson

Class of '79

*Ms. Phoebe L. Bailey
 Miss Kathy Carter
 Miss Renee Edmonds
 *Miss Phyllis Edwards
 Ms. Jo Ann Howard
 Miss Novice D. Johnson
 *Miss Sarah R. Matthews
 Miss Sharon McGahee
 Miss Betty Meshack
 Miss Cynthia Y. Reed
 Miss Jonnelle Sweetner

Class of '80

Miss Christie Adams
 Miss Delia A. Adams
 Mrs. Carolyn Harris Champion

Mrs. Brunetta Ann Hill
*Miss Cheryl L. Jefferson
Miss Deborah Williams
Miss Patricia D. Wilson

Elementary Education '28

Dr. Margaret Bennett Little

High School '14

*Mrs. Eugenia Chandler Chue
*Mrs. Samira Harris Mathes
Mrs. Ethel Hudson Simmons

High School '15

*Miss Mattye L. McCauley

High School '16

Mrs. Claire Humphries Jackson
Mrs. Iona Crawford Wise

High School '17

Mrs. Rachel Jackson Gregg
(Deceased)
*Mrs. Annie McCrary Williams

High School '19

Mrs. Ethel McGhee Davis

High School '20

Mrs. Harriette Green Booth
*Mrs. Pearl Floyd Coombs
*Miss James Frances Green
*Mrs. Nellie Scott McFall

High School '21

Mrs. Maria August Bowden
Mrs. Anna Watson Floyd
*Mrs. Kathleen Pappy McDonalc
*Mrs. Vera Waters Thomas
*Mrs. Victoria Lark Wilson

High School '22

*Mrs. Rebecca Watkins Jones
*Mrs. Lucille Hughes Pulliam

High School '23

*Mrs. Rubye Vinson Gadson

High School '24

Mrs. Wenona Douglass Burton
*Mrs. Rose Smith Curry
Mrs. Virginia Carter Flowers

High School '25

*Mrs. Gertrude Ketchum Foster

High School '26

*Mrs. Hattie Cotton Hurse
*Mrs. Pender Jackson McCall

High School '27

Mrs. Bernice Garner Matthews
*Mrs. Joann Moore Parks

High School '28

Mrs. Dennie Slaughter Hicks
*Mrs. Eliza Ammons Nabbie

High School '29

*Mrs. Mildred Moore Clark
*Mrs. Ida L. Miller

High School '30

*Mrs. Beautine Hubert Decosta
Lee
Miss Louise E. Riley

High School '31

Elizabeth Woodall Davis

HE '22

***Mrs. Lucile Womack Brown

TPC '18

Mrs. Iona Crawford Wise

TPC '19

*Miss Elsa A. Turner

TPC '20

Mrs. Fannye Wallace Ross
*Mrs. Erma C. Walker

TPC '22

*Mrs. Annie Glenn Brooks

TPC '24

Mrs. Laura Jones Keith

AU '32

Mrs. Louise Gray Coles
*Mrs. Grace Hale Williams

Dress Making '17

Mrs. Effie Crawford Ward

Nurse Training '21

*Mrs. Blanche Jackson Booker
Mrs. Anna McGruder Smith

Nurse Training '25

Mrs. Maria August Bowden

FORMER STUDENTS

*Mrs. Annie Alexander
*Mrs. Dorothy Aderhold
Andrews
Mrs. Madelyn Polite Boyden
Ms. Jeanne F. Bristol
*Mrs. Lottie E. C. Brooks
Mrs. Rosetta D. Bryan
Mrs. Ethel Morris Burgan
*Mrs. Vivian McFall Carter
Mrs. Alice Jones Carter
Mrs. Evelyn Merritt Chandler
*Miss Mary L. Clark
Ms. Louise F. Comer
Mrs. Elsie Wilson Conway
(Deceased)
*Miss Jewell J. Cooke
*Miss Marion M. Durant
*Mrs. Minnie B. Edwards
Mrs. Edna Pace Griffin
Ms. Jamila Harris
Mrs. Sallie Lumpkins Hopson
Mrs. Pecola Pearson Hullum
Ms. Ella M. Ison
Mrs. Lucia Kelly Jackson
Mrs. Freddie B. Jackson
*Mrs. Gloria Butler James
Mrs. Eleanor Cotton January
Mrs. Dora Lee Kennedy Johnson
Mrs. Emily Brown Jones
Mrs. Jacquelyn Stubbs Marshall
Mrs. Louise Murray Matthews
*Mrs. Lena Maddox McGhee
*Mrs. Juanita Carr McGill
Mrs. Bessie King McLaughlin

Mrs. Mable Fowler Meyers
*Mrs. Leona Murphy Morton
Mrs. Jacqueline Allen Ormes
Mrs. Lavonia Jones Phillips
*Mrs. Sara Smith Potts
Mrs. June Walker Reddington
*Mrs. Irene B. Reid
Miss Ruth Rivers
Mrs. Quida Hill Smith
Dr. Mabel Murphy Smythe
Ms. Thelma Southerland
*Mrs. Dorothy Cain Stanton
(Deceased)
Mrs. Gussie Stutts-Summers
Mrs. Ruth Kemp Watkins
*Ms. Mary E. Whaley
Miss Elizabeth Whitehead
*Mrs. Eppie Mann Wilder
*Mrs. Essie Lee Jones Williams
*Mrs. Hattie Shannon Williams
Miss Gladys Willingham
*Mrs. Cartherine T. Willis
Miss M. Alyce Woodard
*Ms. Blanche I. C. Wynne
*Mrs. Naomi Berry Young

YEAR OF GRADUATION NOT AVAILABLE

Mrs. Julia M. Buttram
Mrs. Blythe J. Davis
Mrs. Leila Harper
Miss Joyce A. Haywood
Mrs. Janette Holland
Mrs. Rena Kameros
Mrs. Shirley G. Shivers
Ms. Brenda D. Smith

COLLEGE CLASSES

Class of 1956
Class of 1970
Class of 1971
Class of 1976

PARENTS

*Mrs. Pearlline Adamson Davis
'58
*Mr. Henry W. Hall, Jr.
Mrs. Daisy Phinazee Harris '47
*Mrs. Mildred Wynn Penson '51
*Mrs. Catherine T. Willis FS

FACULTY & STAFF

*Dr. June McDonald Aldridge '53
Mrs. Marsha Nash Allen
*Mrs. Sadie Sims Allen '41
*Mrs. Lura D. Altheimer
Mrs. Estelle F. Archibold
Mr. Stanley Atwater
Ms. Marvette R. Baldwin
Miss Roslyn K. Berry
Mrs. Julia W. Bond
*Dr. Sylvia Bozeman
Mrs. Gertrude Brinson
*Dr. Kathryn Brown Brisbane '55
*Mrs. Helen Bell Brooks '37
*Mrs. Barbara Anthony Brown
'68
*Dr. B. LaConyea Butler '56
Mrs. Ann B. Calloway
Dr. Suzanne J. Carr
*Mrs. Evelyn Carroll
*Dr. Richard Carroll
Mr. John Q. Caruthers
Mrs. Carolyn Harris Champion
'80
*Miss Theresa A. Chandler '70
*Mrs. Evelyn Willis Chisolm '49
*Mrs. Earlene Bell Christopher

*Dr. Carmen Jordan-Cox
Mrs. Leah Creque-Harris
Mrs. Sandra Hall Cummings '68
Mrs. America B. Dallas
Ms. Callie M. Daniely
Dr. Diana Danner
*Mrs. Pearlline Adamson Davis
'58
*Dr. Pauline E. Drake '58
Mrs. Sophia A. Durden
*Dr. Oran W. Eagleson
Mrs. Thedda Edwards
Mr. William R. Egan
Ms. Josephine Ellington
Dr. Jean L. Escribano
*Dr. Etta Falconer
Ms. Mary Farmer
*Mrs. Christine King Farris '48
Mrs. Mary L. Fears
*Dr. James S. Gates
*Mr. John Gehl
Ms. Argent Sue Gibson
*Mrs. Gladys Glass '58
Mr. Manuel A. Gonzalez
Ms. Karen R. Grantham
Ms. Cheryl M. Graves
Mr. Leland Gene Haefner II
Dr. Frederick D. Hall, Jr.
Mrs. Lillie Mae Harris
*Dr. Carl R. Hendrickson
*Mrs. Anne R. Hornsby
Mrs. Margaret Howard
Dr. Halimat Inal
Ms. Earline James
Mrs. Lillian A. James
*Mr. Richard A. Jenson
Mr. Charles M. Johnson, Jr.
**Dr. Joyce F. Johnson
*Mrs. Lottie Y. Jones
Dr. Billy E. Lawson
Dr. Harry G. Lefever
*Dr. William B. LeFlore
Mrs. Jacquelyn Stubbs Marshall
FS
*Mrs. Pauline A. Martin
*Mr. Michael J. Mason
*Mrs. Mexico Hembree Mickel-
bury '38
*Dr. Gwendolyn Middlebrooks '61
Ms. Delores L. Miller
Mr. Maceo T. Miller
*Ms. Evelyn Moore
*Dr. Lois Moreland
Ms. Abdun-Noor Muhammad
Dr. Georgia Naderi-Movahed
*Mrs. Augusta Draper Palmer
Ms. Jacqueline Pollard
Mrs. Georgia S. Prease
Mrs. Georgia F. Ragland
*Dr. Nellie G. Randall
Dr. & Mrs. Norman Rates
*Mrs. June Walker Reddington FS
*Ms. Silvana D. Revis '76
*Mr. Christopher Reynolds
Mrs. Lula B. Richard
Mrs. Virginia F. Roberts
Ms. Carmencita Romero
*Dr. Jacqueline Jones Royster '70
Dr. Margarita J. Rubio
Mrs. Joan L. Salters
Mrs. Carrie Searcy
*Mrs. Tanya Coleman Seidu '72
Dr. Nagambal Shah
Dr. Addie P. Shopshire-Rolle
Ms. Vallerie K. Simpson
*Dr. Sandra A. Sims '70
Dr. Deborah A. Sitter
Dr. Christine W. Sizemore
*Dr. Grace B. Smith

*Dr. Robert L. Smothers
 Ms. W. Regania Sneed
 *Dr. Daniel J. Socolow
 Mr. Russell Spencer
 *Mrs. Mozell Spriggs
 Ms. Jo Moore Stewart
 Mrs. Susan Lee Stokes
 *Mrs. Marva B. Tanner
 Mr. James Thompson
 *Mrs. Alma Upshaw
 *Dr. Zadio B. Whisenton
 Mr. James E. White
 Ms. Melanye P. White
 Ms. Peggy L. White
 *Mr. Benjamin J. Williams
 Ms. Nancy J. Willis
 ***Miss Hulda A. Wilson '56
 Mrs. Marilyn L. Yancey
 Dr. Martin Yanuck

BEQUESTS

Estate of Jane K. Bosson

MEMORIALS

In Memory of Mrs. Virginia A. Berry
 Mrs. Rena Kameros
 Dr. Virginia Brown Lockhard '61
 In Memory of Mrs. Julia Mae Garvis Bonds
 Mr. Alfred S. Bonds
 In Memory of Mrs. Annie R. Burns '34
 Mr. Leonard J. Burns
 In Memory of Mrs. Lena Eubanks Chandler HS'13, NT'14
 Mr. D. C. Chandler
 Mrs. Evelyn Caldwell Freeman
 In Memory of Mrs. Georgianne Tinsley Cleveland '52
 Dr. Clifton Tinsley Sparks '48
 In Memory of Mrs. Alice Clemens Foster '41
 Miss Ida Wood '39
 In Memory of Fannie L. Hammett
 Miss Linda B. Hammett '68
 In Memory of Mrs. Annie M. Benton Harper FS
 Mr. Huel Harper, Jr.
 In Memory of Muriel S. Harper
 Mrs. Willie Sherwood Johnson '44
 In Memory of Eleanor Frazier Hicks
 Mrs. Karen C. Campbell
 Mrs. H. W. Clark
 Ms. Barbara J. Loche
 Mrs. Kay L. Watley
 In Memory of Pauline Kline
 Estate of Jane K. Bosson
 In Memory of Mrs. Laura Jane Maddox, 1891
 Mrs. Laura Jones Keith TPC '24
 In Memory of Mrs. Mary Juanita Thrash Payne
 Mr. James E. Payne, Jr.
 In Memory of Mrs. Sarah Jones Offutt
 Mrs. Marian Offutt Travis
 In Memory of Mr. J. Lucian Smith
 Mrs. Dorothy S. Hopkins
 In Memory of Mrs. Dorothy Mills Thompson HS'17
 Miss Anita L. McCollum
 Miss Barbara L. McCollum
 Atty. Carolyn B. McCollum
 Mrs. Carol A. Wilson

In Memory of Mrs. Ruth Harris White '22
 Ms. Alpha M. White
 In Memory of Mrs. Mildred Ward-law Young '35
 Mrs. Vivian Anderson
 Ms. Belva A. Burney
 Mr. & Mrs. Isadore H. Burney
 Mr. & Mrs. James Farley
 Mr. Lemuel Foster
 Mrs. James C. Harrison
 Mr. & Mrs. Butler T. Henderson
 Mr. & Mrs. Claude Henry
 Mrs. Mattie B. Jones
 Mr. & Mrs. Geoffrey Lawrence
 Ms. Dorothy J. Malone
 Mrs. Frances E. Mathews
 Mrs. Nancy Matthews
 Mrs. Doris Osborne
 Mr. Marcellus Portilla
 Mr. Walter Robinson
 Mr. & Mrs. George R. Shivery
 Miss Marguerite F. Simon '35
 Mrs. Virgie J. Smith
 Mr. & Mrs. Hilery Thorne
 Mr. Albert N. Wardlaw
 Mr. Charles H. Wardlaw
 Mrs. Viola Branham Wardlaw '28
 Mr. & Mrs. A. B. Wright
 Mr. Bernard D. Young

SCHOLARSHIPS & AWARDS

Vaughnziel Burch Scholarship Fund
 Mr. Brainard Burch
 Mr. & Mrs. Douglas Burch
 Jettye Dash Memorial Scholarship Fund
 Mr. Robert Breedlove
 Mrs. Joan Eilbott
 Ms. Diane Forastiero
 Mr. Steven M. Fulda
 Mr. Michael L. Goodman
 Ms. Gale Griner
 Mr. Jack Nadler
 Kaarli H. Tasso
 Mr. Robert M. Wharton
 Eula L. Eagleson Prize
 Dr. Halson V. Eagleson
 Adelaide Fullmigher Forde Award
 Dr. Gladys Inez Forde
 Rachel Jackson Gregg Memorial Scholarship Fund
 Ms. Theresa A. Fambro
 Mr. John C. Ford
 Ms. Diane B. Jones
 Mrs. Dorothy G. Tarr
 Mrs. Evoyn Tarr
 Ms. Arluster Westbrooks
 Mrs. Audrey P. Wheat
 Ms. Erma R. Williams
 Patricia Roberts Harris Leadership Award Fund
 Mr. & Mrs. William Beasley Harris
 Curtis M. Marks Memorial Medical Scholarship
 Dr. Shirley F. Marks-Brown '69
 Nash Record Collection
 Dr. Helen E. Nash '42
 Edward E. Riley Memorial Scholarship Fund
 Miss Imogene L. Quarles
 Mrs. William Alexander Scott
 Scholarship Fund
 Mrs. Ruth Scott Simmons '37
 Georgia Caldwell Smith Prize

Dr. Barnett Smith
 Gloria Audrey Starks Scholarship Fund
 Mrs. Lillian A. Starks

NATIONAL ALUMNAE ASSOCIATION CHAPTERS AND REGIONS

Athens Chapter
 Baltimore Chapter
 Baton Rouge Chapter
 Chattanooga Chapter
 Chicago Chapter
 Cleveland Chapter
 Columbia Chapter
 Dallas Chapter
 Detroit Chapter
 Far West Region
 Jacksonville Chapter
 Los Angeles Chapter
 Middle Georgia Chapter
 New Orleans Chapter
 New York Chapter
 Northern California Chapter
 Philadelphia Chapter
 Savannah Chapter
 Tuskegee Chapter
 Washington, D.C. Chapter

ORGANIZATIONS & AGENCIES

American Baptist Churches Block Club
 Committee For the Re-Election of Judge Leo J. Jackson
 National Association of Colored Women's Club, Inc.
 New York City Department of Social Services
 O. H. Perry Elementary School Senior Choir, Presbyterian Church of St. Albans
 United Negro College Fund, Inc.
 Helen A. Whiting Society

STUDENTS, CAMPUS ACTIVITIES & GROUPS

Alpha Kappa Alpha MU PI Chapter
 Epsilon Eta Chapter-Sigma
 Gamma Rho Sorority
 Founders Day Fair
 Freshman Class
 Junior Class
 Senior Class, 1981
 Spelman Spotlight

FOUNDATIONS, FUNDS, TRUSTS

Francis L. Abreu Charitable Trust
 The Atlanta Foundation
 The Bush Foundation
 Fuller E. Callaway Professorships
 Carnegie Foundation
 Arthur Vining Davis Fund
 Shelby Cullom Davis Foundation
 Florence C. & Harry L. English Memorial Fund
 Exxon Education Foundation
 M. & H. Ferst Foundation, Inc.
 John & Mary Franklin Foundation, Inc.
 Glancy Foundation
 The Ray M. and Mary Elizabeth Lee Foundation, Inc.
 Livingston Foundation
 J. Erskine Love, Jr. Foundation, Inc.

Josiah Macy, Jr. Foundation
 The Harriet McDaniel Marshall Trust
 The Andrew Mellon Foundation
 The Charles E. Merrill Trust
 Lillian & Stanley Posner Foundation
 Rockefeller Brothers Fund
 Ida A. Ryan Charitable Fund
 The Starr Foundation
 Howard Thurman Educational Trust Fund
 Kate & Elwyn Tomlinson Foundation, Inc.
 DeWitt Wallace Fund
 The Thomas J. Watson Foundation

BUSINESS & INDUSTRY

Abex Foundation, Inc.
 Abrams Foundation, Inc.
 Ackerman & Company
 Aetna Life and Casualty Foundation
 Alfonso Dawson Mortuary, Inc.
 Alterman Foods, Inc.
 American Express Foundation
 American Telephone and Telegraph Company
 Amoco Foundation, Inc.
 Arthur Andersen & Company Foundation
 The Atlanta Coca-Cola Bottling Company
 Atlanta Life Insurance Company
 Atlanta News Agency, Inc.
 Bank of the South
 Bendix Corporation
 Brad-Mack, Inc.
 Bristol-Myers Fund
 CBS, Inc.
 Calloway Realty Company
 Capitol Foods
 Celanese Corporation
 Chesebrough-Pond's, Inc.
 The Citizens & Southern Fund
 Citizens Trust Bank
 Cluett, Peabody & Company, Inc.
 The Coca-Cola Company
 Colonial Stores Foundation
 Conklin Tin Plate & Metal Company
 Connecticut General Insurance Corporation
 The Continental Group Foundation, Inc.
 Continental Telephone Corporation
 Corning Glass Works Foundation
 Cox Broadcasting Corporation
 Dart Industries, Inc.
 The Delta Airlines Foundation
 Deluxe Check Printers Foundation
 Dittler Brothers
 Dobbs-Paschal Midfield Corporation
 Dow Jones & Company, Inc.
 E. I. du Pont de Nemours & Company
 Elson's
 Empire Distributors, Inc.
 The Equitable Life Assurance Society
 Ernst & Whinney
 Equifax Foundation

First Atlanta Foundation
 First Georgia Bank
 The Ford Foundation
 Fulton Federal Savings & Loan
 General Electric Foundation
 Georgia Highway Express, Inc.
 Georgia International Life Insurance Company
 Georgia Power Company
 Georgia Theatre Company
 Goodman Decorating Company, Inc.
 Grizzard/Haas/Coxe
 Halpern Enterprises
 Harlo Printing Company
 Haverty's Furniture Companies
 Heery International, Inc.
 International Business Machines Corporation
 Isaacson's
 Ivey Brothers, Inc.
 Johnson & Johnson Associated Industries Fund
 K Mart Corporation
 Lear Levin Productions Inc.
 Life Insurance Company of Georgia
 Lockheed Leadership Fund
 The London Agency, Inc.
 M & M Products Company
 Main Hurdman & Cranstoun
 The Merck Company Foundation
 Mobil Oil Corporation
 Morgan Guaranty Trust Company of New York Charitable Trust
 National Bank of Georgia
 National Steel Corporation
 Peachtree Bank & Trust Company
 Price Waterhouse & Company
 The Procter & Gamble Fund
 RCA
 Reynolds Aluminum
 R. J. Reynolds Industries, Inc.
 Rich's
 Rock-Tenn Company
 Scientific-Atlanta, Inc.
 Seovill Foundation, Inc.
 Scripto, Inc. Foundation
 The Sears-Roebuck Foundation
 The Selig Foundation, Inc.
 Sellers Brothers Inc.
 Shell Companies Foundation, Inc.
 Southern Mills, Inc.
 Standard Brands Inc.
 Storer Broadcasting Company/WAGA-TV
 Storey Theatres, Inc.
 Sun Company, Inc.
 Sun Life Group of America, Inc.
 Tenneco, Inc.
 Texaco Philanthropic Foundation, Inc.
 Thompson, Ventulett, Stainback & Associates, Inc. Architects
 TM Enterprises
 Toombs, Amisano & Wells
 Touche Ross & Company
 Troutman, Sanders, Lockerman & Ashmore
 Trust Company of Georgia Foundation
 J. M. Tull Foundation
 Tyler Life Insurance Company of Texas
 United Airlines Foundation
 Warner Communications, Inc.

The Warner-Lambert Foundation
 Webb, Young, Daniet & Murphy, Attorneys At Law
 Western Electric Fund
 Xerox Corporation

MATCHING GIFTS CORPORATIONS

Alcoa Foundation
 AMAX Foundation, Inc.
 American Express Foundation
 American Telephone & Telegraph Company
 Arthur Andersen & Company
 The Bankers Life
 Bristol-Myers Fund
 Celanese Corporation
 Chubb & Son, Inc.
 The Citizens & Southern Fund
 The Coca-Cola Company
 Connecticut General Insurance Corporation
 Digital Equipment Corporation
 The Equitable Life Assurance Society
 First Atlanta Foundation
 The Foxboro Company
 General Electric Foundation
 Alexander Grant & Company Foundation
 Illinois Bell
 International Business Machines Corporation
 Morse Shoe, Inc.
 The Quaker Oats Foundation
 R. J. Reynolds Industries, Inc.
 The Standard Oil Company
 The Stanley Works
 U. S. Borax
 Union Pacific Corporation
 The Upjohn Company
 The Washington Post
 Wells Fargo Bank

GIFTS IN KIND

Case-Hoyt/Atlanta
 McCan Erickson, Inc.
 Mrs. Ruth Wilner

FRIENDS

*Mrs. Ann Abram
 **Mrs. Jane M. Abram
 *Mrs. Cecil Alexander
 Mrs. Elaine B. Alexander
 *Mr. & Mrs. Anthony M. Ames
 Mrs. Vivian Anderson
 *Mr. & Mrs. H. Ross Arnold, III
 Mr. Jimmy L. Arrington
 **Mr. & Mrs. Robert L. Ashe, Jr.
 *Mr. Sam Ayoub
 Ms. Carrie Mae Bailey
 Mr. John E. Bailey
 *Dr. Hilary Baker
 *Mr. Bentley T. Barnes
 *Dr. George P. Berry
 *Mrs. Paula L. Bevington
 *Mr. Francis M. Bird
 *Mr. Charlie H. Blackwell
 Mr. Alfred S. Bonds
 *Mrs. Jean L. Bowen
 Miss Thelma E. Bradford
 *Mr. Inman Brandon
 *Mrs. Julianne R. Brawner
 *Mr. Robert Breedlove
 ***Mr. M. William Bream
 Mrs. Gertrude C. Brown
 Mr. Roger O. Brown
 ***Mr. Robert L. Bunnan

Mr. Brainard Burch
 Mr. & Mrs. Douglas Burch
 Ms. Belva A. Burney
 Mr. & Mrs. Isadore H. Burney
 Mr. Leonard J. Burns
 *Dr. Baldwin W. Burroughs
 Mrs. Karen C. Campbell
 *Mrs. Anne C. Carr
 *Mr. & Mrs. Beauchamp C. Carr
 *Mr. & Mrs. W. Colquitt Carter
 *Mr. & Mrs. Dave Center
 Mr. D. C. Chandler
 Mrs. H. W. Clark
 *Mr. & Mrs. Herbert B. Cohen
 Mr. Ernest M. Cohen
 *Mr. & Mrs. R. Don Comstock, Jr.
 *Mr. John A. Conant
 *Mrs. H. Preston Crum
 *Mr. & Mrs. Hampton L. Daughtry
 *Mr. & Mrs. James F. Densler
 Mrs. Julia K. Dooman
 Mr. & Mrs. Hugh M. Dorsey, Jr.
 *Mrs. Frances W. DuBose
 *Mr. Charles T. Duffy
 *Mr. Harry Dwoskin
 Dr. Halson V. Eagleson
 Mrs. Joan Eilbott
 Ms. Frances Ann Estes
 Ms. Theresa A. Fambro
 Mr. & Mrs. James Farley
 *Mrs. Alvin M. Ferst, Jr.
 Ms. Diane Forastiero
 Mr. John C. Ford
 Ms. Ernestine Foster
 Mr. Lemuel Foster
 *Mrs. Isobel A. Fraser
 *Mr. & Mrs. John F. Frawley
 Mrs. Evelyn Caldwell Freeman
 *Mr. Herbert Friedman
 Mr. Steven M. Fulda
 Mr. William M. Gabard
 *Mr. & Mrs. David H. Gambrell
 Mr. & Mrs. Samuel N. Gardner
 Ms. Marilyn K. Garey
 *Mr. & Mrs. G. L. Geiger
 *Mr. & Mrs. L. L. Gellerstedt
 Ms. Ruth Gershon
 *Mrs. Dorothy W. Gibson
 *Ms. Irma G. Goldwasser
 Mr. Michael L. Goodman
 Mrs. Caroline W. Graham
 **Mrs. Nancey Hall Green
 Ms. Gale Griner
 *Mr. Claude Grizzard, Jr.
 Mr. R. L. Gunn
 *Mrs. Betty G. Haas
 Mr. Elliot L. Haas
 *Mrs. Leonard Haas
 Mr. Bradley Hale
 *Mr. C. Edward Hansell
 Mr. Huel Harper, Jr.
 *Mrs. Deborah Weil Harrington
 Mrs. Dianne Fantroy Harris
 ***Mr. & Mrs. William Beasley Harris
 Mrs. James C. Harrison
 Mr. & Mrs. Pegram Harrison
 *Mr. William C. Hatcher
 ***Mr. Henry J. Heinz, II
 Mr. & Mrs. Butler T. Henderson
 Mr. & Mrs. Claude Henry
 Mr. Leon Hess
 Mr. Joseph K. Heyman
 Mrs. Ernest Hightower
 *Mrs. B. H. Hill, Jr.
 Mrs. Harriet L. Hirsch

Mrs. Morris Hirsch
 Ms. Patricia T. Holland
 Mr. E. A. Hollis
 *Mrs. Anne T. Holmes
 **Mrs. Dorothy S. Hopkins
 *Mr. J. D. Hopkins
 *Mr. & Mrs. Henry Howell
 *Mr. & Mrs. Gerry Hull
 *Mr. & Mrs. J. F. Hume
 **Mr. Sidney E. Jennette, Jr.
 Mrs. Ruth W. Johnson
 *Ms. Barbara J. Jones
 Ms. Diane B. Jones
 Mrs. Mattie B. Jones
 Miss Melba Jones
 Miss Monica Jones
 Dr. Howard Jordan, Jr.
 *Mr. Lawrence G. Keeney
 Mrs. Joan D. Keller
 Miss Avis M. Kemp
 Mrs. Abbie Woodbury Lane
 **Mrs. Helen S. Lanier
 Mrs. Georgia Poinsette Lash
 Mr. & Mrs. Geoffrey Lawrence
 Mr. Leonard W. Leeds
 Dr. & Mrs. George W. Little, III
 Ms. Barbara J. Loche
 Mrs. Muriel M. Lokey
 *Mrs. Margaret Cunningham Lucas
 Mr. & Mrs. Jesse W. Lyons
 Ms. Dorothy J. Malone
 *Mr. & Mrs. Maurice N. Maloof
 *Ms. Helen E. Mantler
 *Mrs. Eleanor F. Massell
 Mrs. Frances E. Mathews
 Mrs. Nancy Matthews
 ***Mrs. Dr. Benjamin E. Mays
 Atty. Carolyn B. McCollum
 Miss Anita L. McCollum
 Miss Barbara L. McCollum
 Mr. Charles E. Merrill
 Miss Ruth Minear
 *Mrs. Anthony Montag
 Mr. & Mrs. Louis Montag
 Mrs. Hope Moore
 *Dr. Christian R. Moorhead
 Mr. Charlie J. Moreland
 Mr. Jack Nadler
 ***Mr. & Mrs. George D. O'Neill
 *Mr. John H. Ogden
 Mrs. Doris Osborne
 Ms. Winnie W. Palmer
 *Dr. James D. Palmer
 *Ms. Susan W. Parker
 *Mr. James E. Payne, Jr.
 *Mrs. Grace Jason Perry
 *Mr. & Mrs. Harry A. Pfiffner
 Dr. E. Bruce Phillips
 Mr. & Mrs. Frank Player
 Dr. Booker Poe
 Mr. Marcellus Portilla
 Mr. & Mrs. H. S. Powell
 *Dr. Leon G. Pye
 Miss Imogene L. Quarles
 **Mr. & Mrs. Allen Questrom
 Mrs. Maenylie M. Reest
 *Mrs. Ann Boon Rhea
 *Mr. Michael P. Rich
 *Mrs. Helen B. Rieser
 ***Mr. James D. Robinson, III
 ***Mrs. Josephine C. Robinson
 Mr. Walter Robinson
 Mr. Willis Rogers
 *Mrs. Ann D. Salo
 Mr. Simon S. Selig, Jr.
 *Mr. Shouky A. Shaheen
 Mr. Stanley Sharp
 **Mrs. Caroline Shaw

Mr. & Mrs. George R. Shivery
 *Mrs. Mary A. Siegel
 *Mrs. Jewel Woodard Simon
 Ms. Georganna T. Sinkfield
 Dr. Barnett F. Smith
 *Mrs. J. Lucian Smith
 Mr. Sidney M. Smith
 Mr. Seaford L. Smith
 Mrs. Virgie J. Smith
 Mr. A. Walter Socolow
 Mr. & Mrs. Jack Sparrow
 Mrs. Lillian A. Starks
 *Mrs. Ann Stewart
 *Mr. Elmer A. Stewart
 Mr. & Mrs. Richard Sugerman
 *Ms. Judy N. Tabb
 *Senator Herman Talmadge
 Mrs. Dorothy G. Tarr
 Mrs. Evoyn Tarr
 Kaarli H. Tasso
 *Mr. & Mrs. Albert C. Tate, Jr.
 *Mr. Horace E. Tate
 *Mr. & Mrs. Mark K. Taylor
 Ms. Nancy M. Terry
 *Mr. & Mrs. Floyd Thacker
 Mr. & Mrs. Hilery Thorne
 Ms. Joan M. Thuebel
 Mrs. Marian Offutt Travis
 Mr. & Mrs. Michael H. Trotter
 *Mrs. Jack P. Turner
 ***Mr. & Mrs. Reginald Valentine
 *Mr. & Mrs. William G. Vance
 ***Mrs. Wilma S. Warburg
 ***Mr. Albert N. Wardlaw
 *Mr. Charles H. Wardlaw
 Mrs. Kay L. Watley
 Ms. Sarah Wells
 *Mr. Larry Weltin
 Ms. Arluster Westbrooks
 Mr. Robert M. Wharton
 Mrs. Audrey P. Wheat
 Mr. Lloyd Tait Whitaker
 Ms. Alpha M. White
 *Mr. & Mrs. John Wieland
 ***Mr. Lawrence A. Wien
 *Mrs. Josephine Wilborn
 Ms. Erma R. Williams
 Mrs. Carol A. Wilson
 Mr. & Mrs. A. B. Wright
 Mr. Paul L. Yantis
 *Mr. Bernard D. Young
 *Mr. & Mrs. Jerome Zimmerman

xx
 ounders
 xx
 ay
 Celebration
 April 1-4

Speaker:
 Marian Wright Edelman

Sisters Chapel
 Sunday • April 4



Spelman:
 a centennial celebration

Let's Celebrate!
 Buy A Book

SPELMAN: A CENTENNIAL CELEBRATION is a book about us, written by one of us. Beverly Guy-Sheftall attended Spelman, joining more than 5,000 dynamic young black women who have come here, learned here, and who have gone from here to blaze trails of achievement and build memorable monuments of accomplishment. They have forever woven the Spelman legacy into the tapestry of this country and the world.

Included among those dynamic women are doctor and scientist, Effie O. Ellis; opera star, Mattiwilda Dobbs; actress and Emmy winner, Esther Rolle; and Annie Alexander, who at 105 years-old is our living symbol of Spelman excellence.

YOU WILL MEET THEM ALL AND MORE IN THIS PICTORIAL HISTORY, SPELMAN: A CENTENNIAL CELEBRATION

SPELMAN: A CENTENNIAL CELEBRATION, a beautifully bound, hard-cover book, features more than 150 photographs, many of them turn-of-the-century originals from the extensive Spelman archives; original art work and a unique gatefold timeline that gives you a capsule look at our first century.

Send \$10, plus \$2 for postage and handling to: Spelman College, Box 16, 350 Spelman Lane, S.W., Atlanta, Georgia 30314.

(CUT ALONG DOTTED LINE)

Fold 4

I am enclosing my gift to SPELMAN COLLEGE.

Amount of gift \$ _____ Paid herewith \$ _____

Balance to be paid: ☐ Monthly ☐ Quarterly ☐ Other _____

Name: _____

Maiden Name: _____ Class _____

Address: _____
(street)

_____ (city) (state) (zip code)

Phone Number: _____

Fold 3

Please accept our invitation to join one of these special gift societies and become a part of the dedicated core group that is helping Spelman in its stride to meet the high cost of excellence.

The Presidents' Society is for the select group of individuals who accept the tradition that philanthropy is essential to the preservation of private education.

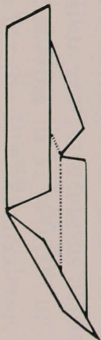
Honoring all presidents of Spelman College, this society has three giving levels: Gold Medallion — honoring donors who give \$10,000 or more; Silver Medallion — honoring donors of \$5,000 to \$9,999; Bronze Medallion — honoring donors of \$1,000 to \$4,999.

The 1881 Society is for those friends of Spelman College whose generous financial support makes possible the educational advancement of the college.

The 1881 Society offers two levels of giving: The Founders' Club honoring donors of \$500 to \$999. The Century Club honoring those who annually give \$100 to \$499.

Your membership in one of these distinguished Societies will insure the future greatness of Spelman College.

Gifts are tax deductible.
Please make checks payable to Spelman College.



Fold 2

Fold 1

(CUT ALONG DOTTED LINE)

SEAL WITH SCOTCH TAPE
ON ALL THREE EDGES
NO POSTAGE REQUIRED

FOLD NO. 4



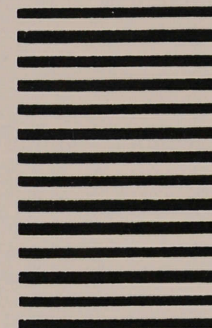
NO POSTAGE
NECESSARY
IF MAILED
IN THE
UNITED STATES

BUSINESS REPLY MAIL

FIRST CLASS PERMIT NO.3350 ATLANTA, GEORGIA

POSTAGE WILL BE PAID BY ADDRESSEE

SPELMAN COLLEGE
P. O. Box 16
350 Spelman Lane, S.W.
Atlanta, GA 30314



FOLD NO. 2

FOLD NO. 1

FOLD NO. 3



President Donald M. Stewart (left) and **Mrs. Asa (Marge) Yancy**, Spelman trustee, accept a \$500 centennial check from **Rev. Earl Dabney**, public relations director of Alterman Foods, Inc., a division of Food Giant. Rev. Dabney said, "it was a pleasure for our company to participate in Spelman College's centennial celebration. We are proud of the many contributions that Spelman has made to our city, nation, and world. We wish you much success and God's blessings in the future." He credited the gift to the foresight and generosity of **Mr. Max Alderman**, President of the Alderman Foods, Inc., one of the leaders in the supermarket industry to support black higher education. Rev. Dabney's wife is Spelman alumna **Betty Lovette Dabney**.



Dr. Lois Moreland, chair of the Department of Political Science, beams with pride for her students **Tonie Washington** and **Odrie Chapman** who were both nominated for the Harry S. Truman Scholarship and who received nominee certificates. Later Ms. Chapman received word that she had been awarded a scholarship. The Harry S. Truman Scholarship Foundation was established by Congress as the official federal memorial to honor the thirty-third President of the United States. It is a permanent educational scholarship program designed to provide opportunities for outstanding students to prepare for careers in government.



President Stewart (left) started the new year receiving a check from the Sears Roebuck Foundation via their area representative **Machion Garrison**. During the first week in January, grants totaling \$11,791 were distributed to five Atlanta University Center Schools.

These schools are among over 1,000 private accredited two and four year institutions across the country which are sharing in \$1,500,000 in Sears Foundation funds for the 1980-81 academic year. Funds may be used unrestrictedly as the colleges and universities deem necessary.

SPELMAN COLLEGE PRIZES AND AWARDS 1980-81

Beulah Boley Scholarship
Denise Patrick and Dandrea Brooks
Ethel McGhee Davis Scholarship
Carolyn Simmons
Borden Scholars
Kim Heath
Saralynn Brown
Kathy Gaillard
Dara Perkins
Coca-Cola Scholarships
Karen McClendon and Joye Martin
Lucinda Hayes Scriptures
Donna Shadd
Adams-Hamilton Prize
Omobolo Adesina
The Thomas J. Watson Fellowship
Pamela Moore
Irene and John Wesley Dobbs Prize
Terry Crawford
Jerome Award for Creative Achievement
Melody Ruffin
Mary Alice English Knight Award
Lisa McCorkel
Georgia Caldwell Smith Prize
Emily Black
Florence M. Read Award
Yvette Brown
Lucy Upton Prize
Enid Gambrell
Minnie James Washington Prize
Romel Ramsey
Samuels Prize for Excellence in Social Science
Kiron Skinner
Dixon Sisters Education Award
Reba Hill
Helen Tucker Albro Prize
Lana Horton
Adelaide Fullmigher Forde and
Dorothy Forde Bolden Award
Andrea Birch
Mrs. William Alexander Scott Award
Bridgett Davis
Peter James Bryant Prize
Jann Primus
Laurelle B. Fuller Mathis Scholarship
DeVickie Gray
Seymour-Finney Prize
Tanya Trippett
Mary E. Simmons Prize
Maxine Lawson
Barnett Frissell Smith Award
Tolles Harris
Dr. Edward R. Riley, Jr., Scholarship
Sheila Sheftall
Amy Chadwick Scholarship
Felecia Washington
Vaughnziel Burch Award
Sonja Parker
May S. and Jeanie S. MacGregor Scholarship
Francine Richardson
Hannah H. Reddick Scholarship
Allison Willis
Ward C. Bordeaux Scholarship
Laurie Moon
Trevor and Bertha Arnett Scholarship
Dena Johnson
Chamberlain Scripture Reading Prize
Gena Hudgins
Princess Wright
Ludie Andrews Scholarship
Audrey Hill
Maggie G. Valentine Scholarship
Maria Earl, Sophomore
Stephanie Tucker, Junior
Catherine H. Waddell Scholarship
Donna Shadd
Alberta W. King Scholarship
Altry James
Merrill Scholarship
Rhonda Rush
Harry S. Truman Scholarship
Odrie Chapman
Presidential Award
Carolita Jones
Jettye Hasben Dash Memorial Scholarship
Emily Black
Patricia Roberts Harris Leadership Award
Pamela Scott
George M. Brown Trust Fund Scholarship
Cynthia Carter
Archer High School
Ludie Andrews Prize
Audrey Hill
J. Louise Fowler Scholarship
Cynthia DeBerry
Willis Laurence James Scholarship
Jacqueline Howard
Dorothy Shepard Manley Fellowship
Tanya Trippett
Dorothy Shepard Manley Scholarship
Marilynn Hill



Senior Bench Restored — The Class of 1941 restored the Senior Bench tradition in time for the Centennial Class Day Celebration. Having started the tradition, some of the classmates returned for the ceremony. Seated is Mrs. Sadie Allen, (Associate Dean for Life Planning Programs). Behind Mrs. Allen (left to right) are: Mrs. Rosa Hill Brown, Mrs. Evelyn Sease Quivers, Dr. Penelope Bullock, Mrs. Edith Arnold Hambrick, and Mrs. Verta Carter Owens. The original Senior Bench was first dedicated on Class Day 1941 and is traditionally dedicated to the incoming senior class annually on Founders Day. The Bench was made of lumber from the original Civil War Quarters on Spelman's campus site.



HOMIE SWEET SPELMAN



Marian Wright Edelman of Washington, D.C., founder and director of the Children's Defense Fund, public interest lawyer, and Chair of the Board of Trustees of Spelman College, was awarded an honorary Doctor of Public Service degree at Northwestern University's 80th commencement ceremonies Sunday, June 21, in the Boston Garden.

Northeastern University President Kenneth G. Ryder (left) presented Mrs. Edelman with the honorary degree citation which read in part, "Since 1973 as founder and director of the Children's Defense Fund, you have brought your talent and your energy to focus on advocating and assuring our civil rights and the rights of our children. In representing the interests of the young in the courts and to government officials, and by informing the public, you have defended and expanded the rights of children."

Mrs. Edelman was one of 12 leaders in business, politics, and education to be honored by Northeastern in two separate ceremonies.

Norman Rosenblatt, right, dean of Northeastern's College of Criminal Justice, served as Mrs. Edelman's escort and adjusted her honorary hood.



Officers of the National Alumnae Association of Spelman College

EXECUTIVE MEMBERS

Mrs. Patricia Moody Pearsall
President
10822 Riverview
Houston, Texas 77042

Mrs. Dorothy Mapp Pleasant
Vice-President
P.O. Box 9308—Charlotte Amalie
St. Thomas, Virgin Islands 00801

Mrs. Pearline Adamson Davis
Second Vice-President
2454 Ovida Circle S.W.
Atlanta, Georgia 30311

Mrs. Ernestine Miles Mann
Recording Secretary
1709 Laurens Drive
Atlanta, Georgia 30311

Mrs. Elise Dunn Cain
Assistant Recording Secretary
4710 Prentiss Avenue
New Orleans, Louisiana 70126

Miss Jean LaRue Foster
Corresponding Secretary
1079 Washington Heights Terr. N.W.
Atlanta, Georgia 30314

Mrs. Florence Morrison Hogan
Treasurer
2825 Chaucer Drive, S.W.
Atlanta, Georgia 30311

Mrs. Jacquelyn Johnson Bolton
Assistant Treasurer
668 Church Street, N.W.
Atlanta, Georgia 30318

NORTHEAST REGION

Mrs. Annabelle M. Williams
Coordinator
6229 Ogontz Avenue
Philadelphia, PA 19141

Mrs. Mattie Collins
Secretary-Treasurer
3732 N. Bouvier Street
Philadelphia, PA 19140

BALTIMORE CHAPTER

Dr. Ernestine Walker Baylor
President
1002 Argonne Drive
Baltimore, MD 21218

Boston Chapter

Mrs. Martha Jones Welch
President
17 Mayfair
Roxbury, MA 02119

Columbia Chapter

Mrs. Alice Morgan Grant
President
6 Slate Mills Road
Baltimore, MD 21228

New York Chapter

Mrs. Virginia Turner Dowell
President
488 Pinebrook Avenue
West Hempstead, NY 11552

North New Jersey Chapter

Mrs. Jewell Richardson Smith
President
24 Renshaw Avenue
East Orange, NJ 07017

Philadelphia Chapter

Mrs. Naomi Johnson Booker
President
1510 E. Yerkes Street
Philadelphia, PA 19119

Washington, D.C. Chapter

Mrs. Regina Hughes Ingram
President
1836 Monroe Street, N.W.
Washington, D.C. 20010

SOUTH CENTRAL REGION

Dr. Shirley Marks-Brown
Coordinator
4007 Leeshire Drive
Houston, TX 77025

Mrs. Ernestine Stewart Gray
Secretary-Treasurer
4001 General Pershing
New Orleans, Louisiana 70125

Baton Rouge Chapter

Mrs. Dorothy Myers Stepteau
President
2621 Gracie Street
Baton Rouge, LA 70802

Dallas Chapter

Mrs. Cheryl Andrews Malone
President
5441 Cherry Glen Lane
Dallas, TX 75232

Houston Chapter

Mrs. Pamela Carson Ireland
President
6500 W. 43rd
Apartment 2014
Houston, TX 77092

New Orleans Chapter

Miss Ivy Prout
President
1733 Franklin Street
Gretna, LA 70053

SOUTHEAST REGION

Miss Jean LaRue Foster
Coordinator
1079 Washington Heights Terrace, N.W.
Atlanta, GA 30314

Mrs. Gwendolyn Horton Hicks
Secretary-Treasurer
2603 Baker Ridge Drive, N.W.
Atlanta, GA 30318

Albany Chapter

Mrs. Catherine Abercrombie-King
President
1014 Randolph Avenue
Albany, Georgia 31705

Athens Area Chapter

Mrs. Ruth Davis Hawk
President
185 Le Ann Drive
Athens, GA 30601

Atlanta Chapter

Mrs. Barbara Buckley Washington
President
1501 South Gordon Street, S.W.
Atlanta, GA 30310

Birmingham Chapter

Mrs. Loretta Eddleman Gordon
President
1512 Goldwire Street, N.W.
Birmingham, AL 35211

Charlotte Chapter

Mrs. Sherry Davis Young
President
6124 Wheeler Drive
Charlotte, NC 28211

Chattanooga Chapter

Mrs. Madelyn Foster Daniels
President
725 Belle Vista Avenue
Chattanooga, TN 37411

Durham Chapter

Mrs. Rita Thorpe Tyson
President
201 Omega Road
River Forest
Durham, NC 27704

Middle Georgia Area Chapter

Miss Wilma Jaymes Anderson
President
P.O. Box 4205
Fort Valley State College
Fort Valley, GA 31030

Jacksonville Chapter

Mrs. Sibyl Sims Carley
President
1134 Squirrel Court
Jacksonville, FL 32218

Savannah Chapter

Mrs. Rosalyn Truitt
President
703 Leaning Oaks Drive
Savannah, Georgia 31410

Tuskegee Chapter

Mrs. Elsie Mallory Smith
President
309 Neal Street
Tuskegee Institute, AL 36088

WESTERN REGION

Denver Chapter

Mrs. Bettieanne Childers Hart
President
13025 East 51st Avenue
Denver, CO 80239

FAR WEST REGION

Mrs. Diane Marie Anderson
Coordinator
4314 Sutro Avenue
Los Angeles, CA 90008

Mrs. Bernadette Weston Harfield
Secretary-Treasurer
3027 55th Avenue
Oakland, CA 94605

Los Angeles Chapter

Mrs. Melissa Kilgore Briley
President
6235 S. Fairfax Avenue
Los Angeles, CA 90056

Northern California Chapter

Mrs. Madelyn Jones Boyden
President
9194 Caldera Way
Sacramento, CA 95826

GREAT LAKES REGION

Mrs. Ansonia Campbell Walls
Coordinator
291 East Boston Boulevard
Detroit, MI 48202

Mrs. Frieda McGhee Hampton
Secretary-Treasurer
4400 Clarkwood Parkway
Warrensville Heights, OH 44128

Chicago Chapter

Mrs. Ruth Ketchum Yarbrough
President
9124 S. Wallace
Chicago, IL 60620

Cleveland Chapter

Mrs. Frieda McGhee Hampton
President
4400 Clarkwood Parkway
Warrensville Heights, OH 44128

Columbus Chapter

Mrs. Deborah Watts James
President
3099 Highcliff Court
Columbus, OH 43229

Detroit Chapter

Miss Sheilah Patrice Webb
President
14256 Archdale
Detroit, MI 48227

St. Louis Chapter

Mrs. Theodosia Washington Hammons
President
4819 Carter Avenue
St. Louis, MO 63115

SPELMAN COLLEGE
350 Spelman Lane, S.W.
Atlanta, Georgia 30314

SECOND CLASS POSTAGE PAID AT ATLANTA, GEORGIA

THANK YOU