



# R Reflections

1 9 6 2





## SPELMAN HYMN

Spelman, thy name we praise  
Standards and honor raise  
We'll ever faithful be  
Spelman, thy name we praise  
Throughout eternity.  
May peace with thee abide  
And God forever guide  
Thy heights supreme and true  
Blessings to you.

Through years of toil and pain  
May thy dear walls remain  
Beacons of heavenly light,  
Undaunted by the fight;  
And when life's race is won,  
Thy noble work is done,  
Oh, God forever bind  
Our hearts to thine.

Words and music  
by  
Eddye Mae Money, '34











# SPELMAN COLLEGE

Presents

## THE 1962 REFLECTIONS

Priscilla F. Rowe, *Editor*

Mr. J. Q. Caruthers, *Advisor*









TABLE  
OF  
CONTENTS

DEDICATION

CLASSES

ACADEMICS

ACTIVITIES

FEATURES

AND

HONORS

FAREWELLS

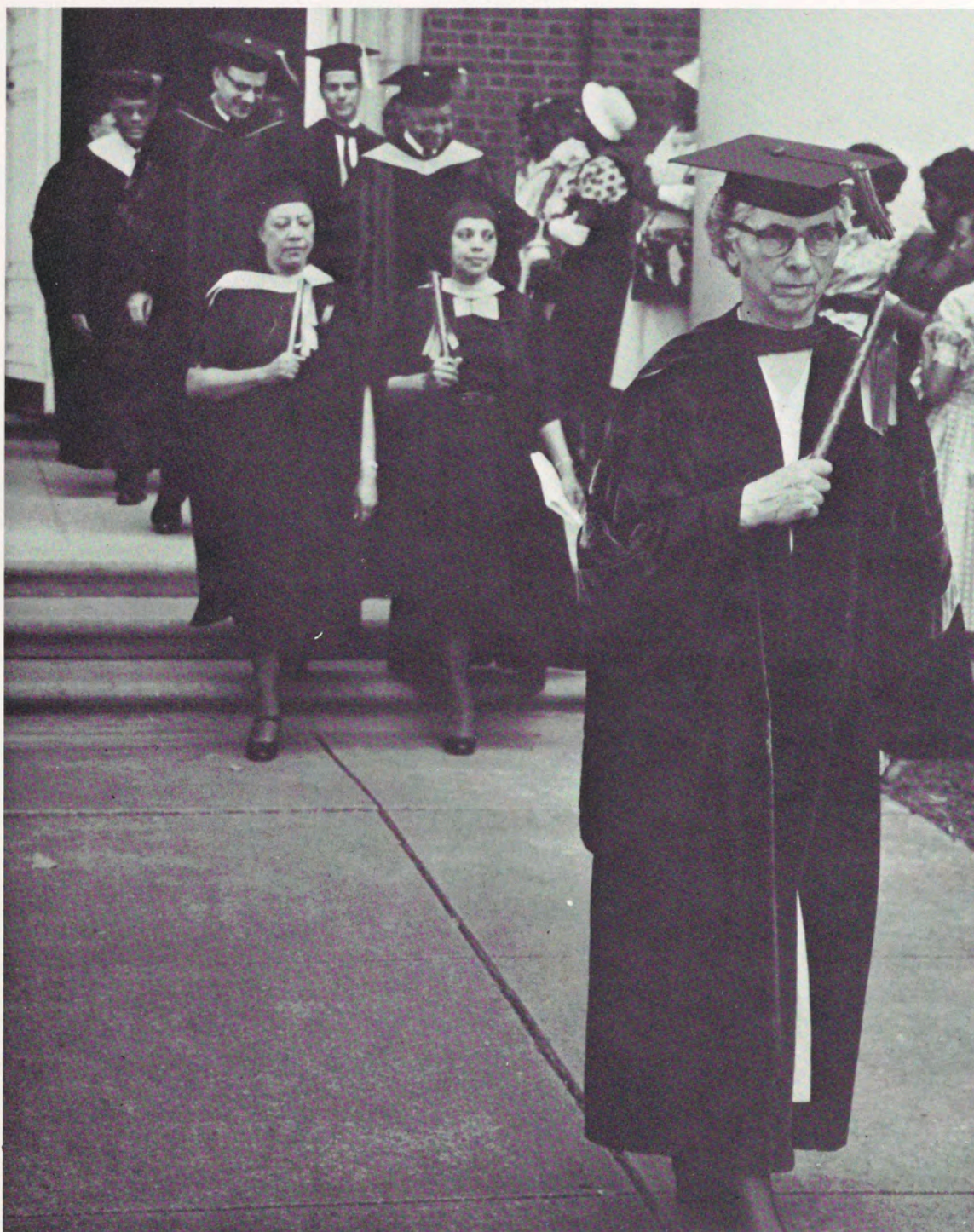
PATRONS

AND

ADVERTISEMENTS



THE 1962 REFLECTIONS IS DEDICATED TO TWO PERSONS



DR. HELEN T. ALBRO  
Retired Head of Spelman College  
*Biology Department*  
Pictured As We Remember Her



WHOSE LIVES ARE THE EMBODIMENT OF SPELMAN'S IDEALS



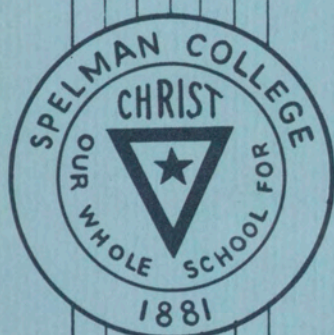
DR. GRACE J. BOGGS  
Spelman College  
*Music Department*





A favorite tree between Rockefeller Hall and Packard Hall





# CLASSES





ON THE FOLLOWING PAGES:

CLASS OFFICERS

OUTSTANDING SENIORS

SENIORS

SENIOR HISTORY

JUNIORS

SOPHOMORES

FRESHMEN









Last year, members of the present senior class proudly formed a pathway to the arch for their senior sisters.





*Left to right: Anna Hankerson, president; Merdis Davis, vice-president; Glenzy Thomas, treasurer; and Dorothy Alexander, secretary*

## THE SENORS – CLASS OF 1962

SENIOR YEAR . . . Checking records with Mrs. Perry . . . winning the Thanksgiving Rally . . . election to Who's Who . . . Outstanding Seniors . . . Graduate Record Exam . . . Student Teaching . . . seminars . . . senior production . . . Founders Day . . . caps and gowns . . . the last Junior-Senior Prom . . . Senior Brunch . . . "Do or die" letters from the Registrar's Office . . . Class Day Ivy Speaker . . . Baccalaureate . . . Graduation. These are the reminiscences seniors will share as they sing:

Dear Spelman, thy daughters rejoice in thy fame,  
Acknowledge thy beauty, and honor thy name;  
How fondly we praise thee wherever we roam,  
And love thee and cheer thee, our school and our home.



Dr. Grace Boggs, Sponsor





*Barbara Adams*



*Patricia Battle*



*Gwendolyn Eagleson*

## OUTSTANDING SENIORS

After four years of maintaining academic averages, holding offices in organizations, participating in extra-curricular activities, obtaining excuses from the infirmary, trying to avoid losing quality points, and waiting for letters from home, the members of the senior class are able to boast of outstanding students.

Upon the request of the Reflections staff, the Committee on Admissions, Appeals and Scholarship chose ten students from the senior class to be featured in this section. These ten students were selected on the basis of character, scholarship, and service to the college community.



*Martha Randall*





*Melvis Evans*



*Anna Hankerson*



*Carol Jackson*



*Minnie Riley*



*Priscilla Rowe*



*Patricia White*





BARBARA ADAMS

*Major:* Social Science

*Minor:* Philosophy

Class Secretary 2; SSGA Secretary 3; Glee Club 1, 2; Chorus 1, 4; Granddaughters Club 1, 2, 3, 4; Delegate to National Conference on Youth Service Abroad 3; Business Manager—Yearbook 4; Spotlight Staff 1, 2, 3.



LULA ARNEY

*Major:* Psychology

*Minor:* Elementary Education

Mathematics Club 2; French Club 2, 3; YWCA 1, 2, 3, 4; Yearbook Staff



DOROTHY ALEXANDER

*Major:* Social Science

*Minor:* Secondary Education

Student Council 4; Yearbook Staff 4; Secretary of Senior Class; Miss Sphinx 1; Miss Alpha Phi Alpha 3; Glee Club 1, 2; Swimming Club 2, 3

True Spelmanites ?!



DIANE ATTAWAY

*Major:* Speech and Drama

*Minor:* Secondary Education

English Club 1; YWCA 2, 3; AMS Players 2, 3, 4; Swimming Club 1







Playing cards in the library???

### SANDRA BANKS

*Major:* Music

*Minor:* Elementary Education

Granddaughters 1; Spanish Club 2;  
Chorus 2,4; Glee Club 1,2,3,4

### BARBARA BARNETT

*Major:* Sociology

*Minor:* Psychology

Glee Club 1,2; Chorus 2; Swimming  
Club 2; Psychology Club 3; Social Sci-  
ence Club 3,4; YWCA 1,2,3,4; Year-  
book Staff 3,4; Judiciary Board 4;  
NAACP 4

### PATRICIA BATTLE

*Major:* French and Psychology

*Minor:* Secondary Education

Dormitory Vice-president 1; Head Hos-  
tess—Dining Hall 2,3,4; UNCF 4;  
YWCA 1,2,3,4; French Club 3,4; Psy-  
chology Club 3,4; Orchestra 1







Spelman College String Quartet ??



ELIZABETH BRADSHAW

*Major:* Psychology

*Minor:* Social Science

Honor Roll 1; Exchange Student 2,  
Chairman — Usheretts 3; Secretary  
SSGA 4; Chorus 4

SADIE BRINSON

*Major:* Social Science

*Minor:* Secondary Education

YWCA 1, 2, 3, 4; Biology Club 1;  
Social Science Club 3, 4; NAACP 3

JOYCE CASH

*Major:* Social Science

*Minor:* Secondary Education

Sunday School Council 3, 4; Social  
Science Club 3, 4

BETTYE CLARK

*Major:* Psychology

*Minor:* Elementary Education

Day Students Organization 1, 2, 3;  
Glee Club 1; YWCA 4; Yearbook 4







DOROTHY CLAYTON

*Major:* Psychology

*Minor:* Elementary Education

Glee Club 3, 4; Granddaughters Club 1, 2, 3, 4; Spanish Club 1; YWCA 1



DOROTHY CLEMENTS

*Major:* Psychology

*Minor:* Elementary Education

Glee Club 3, 4; Granddaughters Club 1, 2, 3, 4; YWCA 1



HENRILYNN COLEMAN

*Major:* Mathematics

*Minor:* Secondary Education

Math Club 2, 3, 4; YWCA 2, 3, 4; Pre-Alumnae Club 3

CLARELLA COOKE

*Major:* Music

*Minor:* Secondary Education

Glee Club 1, 2, 3, 4; Chorus 1, 4; Granddaughters Club 1, 2, 3, 4; Sunday School 1, 2, 3, 4



After all, we aren't *in* the car.







RUBY CUBY

*Major:* Social Science  
*Minor:* Secondary Education

Orchestra 1; Swimming Club 2; Social Science Club 4



MERDIS DAVIS

*Major:* Biology  
*Minor:* Secondary Education

Biology Club 3, 4; UNCF 3, 4; Sophomore Class Treasurer; Junior Class Secretary; Senior Class Vice-president; Swimming Club 2; Exchange Student 3; Sunday School Council 1; Budget Board 2



HELEN DENNIS

*Major:* Home Economics  
*Minor:* Secondary Education

Home Economics Club 1, 2, 3, 4; Pre-Alumnae Club 1, 2, 3, 4; YWCA 1, 2, 3, 4; NAACP 3, 4

Don't you think it is about time that you pass Biology 101 ?



CLARA HORSELY

*Major:* Psychology  
*Minor:* Elementary Education

Chorus 1; Dorm Council 2; Glee Club 1, 2, 3







GWENDOLYN EAGLESON

*Major:* Psychology  
*Minor:* Social Science

Class President 1; Class President 2;  
Vice-President SSGA 3; Representative  
to Student Council 4



Why can't we go to Mexico for the week-end ?

MARY ELLIS

*Major:* Home Economics  
*Minor:* Elementary Education

Honor Roll 2; Miss Phi Beta Sigma;  
Usherette; NAACP; Granddaughters  
Club

MELVIS EVANS

*Major:* Mathematics  
*Minor:* German

Exchange Student 3; Math Club 2,  
3; YWCA Cabinet 1, 2, 3, 4; South-  
ern Regional Council of YWCA 3;  
House Council 4

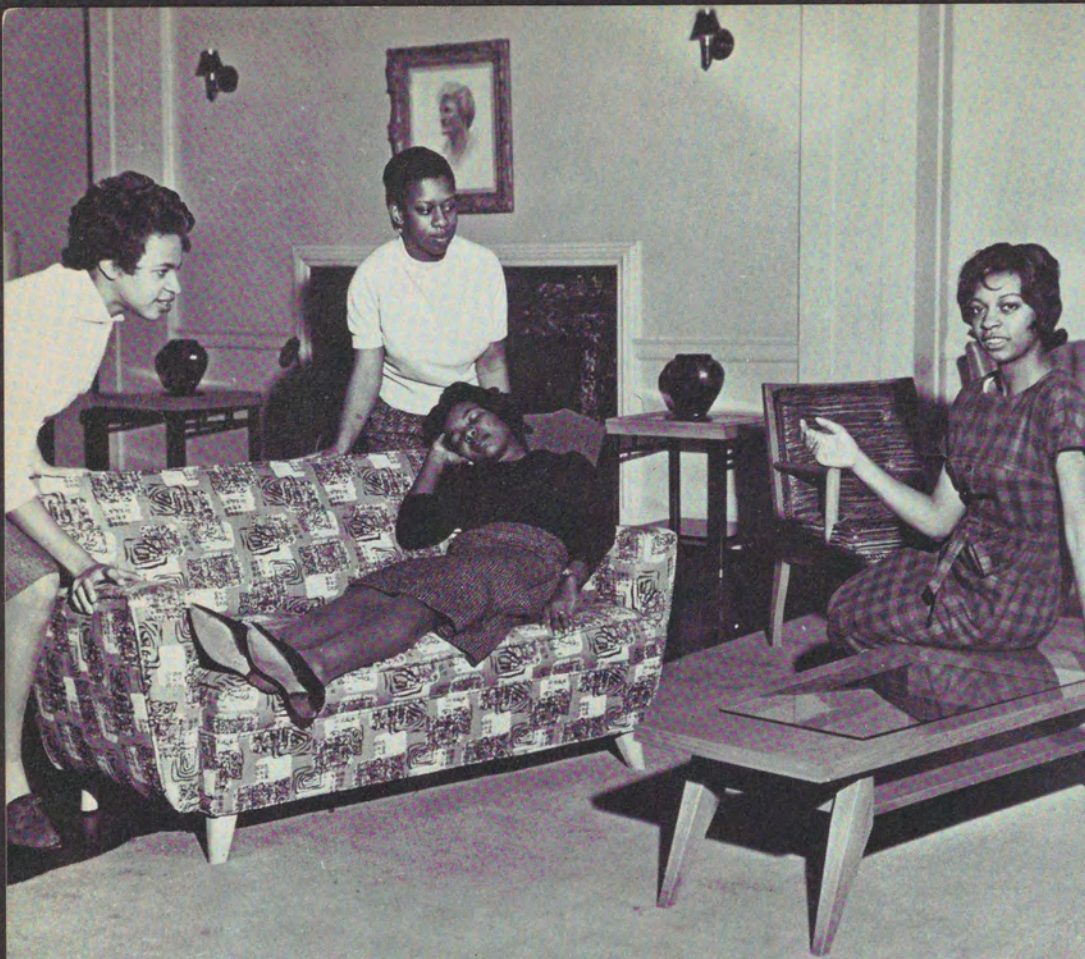
DELORES FAMBRO

*Major:* Biology  
*Minor:* Education

Glee Club; Biology Club; Day Stu-  
dents Organization







So what's wrong with Spelman Van Lines? She isn't complaining.



JOAN FEW

*Major:* Psychology

*Minor:* Elementary Education

Day Students Organization 1, 2, 3;  
YWCA 3

PATRICIA FLETCHER

*Major:* Psychology

*Minor:* Elementary Education

AMS Players 3;

THOMASENOR FORTSON

*Major:* Art

*Minor:* Education

AMS Players 2, 3; NAACP 4; Art  
Club 2, 3, 4; French Club 1; Reflec-  
tions Staff 3

CAROLYN GAITHER

*Major:* Home Economics

*Minor:* Secondary Education

Home Economics Club; Granddaugh-  
ters Club; Day Students Organization;  
Miss Senior 61-62







ANNA HANKERSON

*Major:* English

*Minor:* Secondary Education

Honor Roll 1; English Club 1, 2, 3, 4; Sunday School Council 1, 2, 3, 4; Louise Fowler Award 2; President of Senior Class



ALICE HERRING

*Major:* Mathematics

*Minor:* Secondary Education

President of Day Students Organization 3; Math Club 2; Student Council 3; Yearbook Staff 4



ANNETTE HIGHTOWER

*Major:* Biology

*Minor:* Secondary Education

Biology Club 1, 2, 4; Spanish Club 1, 2, 4; Yearbook Staff 4

ARAMINTHA HAMILTON

*Major:* Social Science

*Minor:* Elementary Education

Glee Club 2, 3, 4; Swimming Club 1, 2, 3, 4; UNCF 1, 2, 3, 4; Dancing Club 2; AMS Chorus 2



Too bad, the infirmary is closed.







BETTY HOWELL

*Major:* Physical Education

*Minor:* Related Sciences

Treasurer of Freshman Class; Glee Club 2; Day Students Organization 3; Secretary of PEM Club 4



PATRICIA HURD

*Major:* Biology

*Minor:* Secondary Education

French Club 1, 2; Participant in the Short Exchange 3; Glee Club 4; Treasurer of the Biology Club 4



EDITH IRVINS

*Major:* Art

*Minor:* Elementary Education

Spanish Club 1; Treasurer of the Day Students Organization 2; Art Club 3; Art Editor of Reflections; YWCA 4; Budgetboard 4

Well, the handbook said six-weeks break.



CAROL JACKSON

*Major:* French

*Minor:* Spanish

Glee Club 1, 2, 3, 4; Granddaughters Club 1, 2, 3, 4; Who's Who 3, 4; Crossroads Africa (Summer of 1960); Pi Delta Phi (French Honorary Society)







NEVERDA JACKSON

*Major:* Home Economics

*Minor:* Elementary Education

Home Economics Club; Day Students Organization; YWCA; NAACP



They're looking for their demerits.

NANCY JORDAN

*Major:* Psychology

*Minor:* Social Science and Secondary Education

French Club 2; Psychology Club 2, 3; YWCA 1, 2, 3, 4; NAACP 3

HENRIETTA LASTER

*Major:* Psychology

*Minor:* Elementary Education

Glee Club 1, 2, 3; Social Chairman of Class 1, 3; Dance Club 1, 2; Swimming Club 2, 3

ANGELIQUE LEWIS

*Major:* Biology

*Minor:* Mathematics

Biology Club 1, 2, 3; Day Student Organization 1, 2, 3; Mathematics Club 1, 2, 3







Don't look now, but you're both about to be snowed under.



JOELLA MARSHALL

*Major:* Physical Education

*Minor:* Related Sciences

Glee Club 1; PEM Club 2, 3, 4;  
Swimming Club 3

CATHERINE MORRIS

*Major:* Psychology

*Minor:* Education

Mathematics Club; Library Club;  
YWCA; Day Students

FRANCES MORROW

*Major:* Mathematics

*Minor:* Secondary Education

Mathematics Club 1; Granddaugh-  
ters Club 2; Day Students Organization  
3; NAACP

ANGELA OWEN

*Major:* Psychology

*Minor:* History

Granddaughters Club 2, 3, 4; Dor-  
mitory Council 2, 3; Newspaper Staff 4







JACQUELYN PERTILLA

*Major:* Social Science

*Minor:* Secondary Education

Social Science Club 1; Spanish Club 2; Granddaughters Club 4; Dormitory Council 3



JOYCE PITTS

*Major:* Chemistry

*Minor:* Mathematics

Chairman of Freshman Class; Glee Club 1, 2, 3, 4; AMS Chorus 2, 3, 4; President of the Day Students Organization 3; Granddaughters Club 4



SALLIANN POLLOCK

*Major:* Drama

*Minor:* Secondary Education

AMS Players 1, 2, 3, 4; AMS Chorus 1, 2, 3, 4; Glee Club 2, 3, 4; Swimming Club 4

MARTHA RANDALL

*Major:* French

*Minor:* Biology and Education

Glee Club 1, 2; YWCA 2 (Treasurer), 3, 4 (President); Chairman of Religious Empasis Week Committee 3; Delegate to Student Teacher Regional Conference 4



Don't fence me in.







ROCHELLE RHODES

*Major:* Psychology

*Minor:* Sociology

Miss Scroller 1; Kappa Alpha Psi 3;  
Glee Club 1, 2, 3, 4; Attendant to Miss  
Maroon and White 4



QUINETTE RHODES

*Major:* Social Science

*Minor:* Secondary Education

Glee Club 1; AMS Chorus 1;  
NAACP 2; Day Students Organization  
3; Reflections Staff 4



DELOIS RIGGINS

*Major:* Psychology

*Minor:* Secondary Education

Psychology Club 1; NAACP 2; Day  
Students Organization 3; Reflections  
Staff

New Recruits for the Spelman Nursery.



MINNIE RILEY

*Major:* Psychology

*Minor:* Elementary Education

MacGregor Prize 1; Florence M.  
Read Award 2; Who's Who 3, 4; Vice  
President SSGA 3; Lucy Upton Prize  
3; Amy Chadwick Scholarship 3; Pres.  
of Student Body 4; Honor Roll







MIRIAM ROBINSON

*Major:* Psychology

*Minor:* Elementary Education

Glee Club 1, 2; Day Students Organization 1, 2, 3



We're only human.

PRISCILLA ROWE

*Major:* English

*Minor:* Education

Honor Roll 1; Pre-Alumnae Club 2; Exchange Student 3; Reflections Editor 4; Usherette 2, 3; Who's Who 4

GENEVIEVE RUCKER

*Major:* Art

*Minor:* Elementary

Glee Club; Chorus; Dance Club; Swimming Club; Day Students Organization; Art Club

MAUDESTINE SIMMONS

*Major:* Art

*Minor:* Education

Art Club 2; Miss Sophomore 2; Day Students Organization 3







Who said we don't keep up with campus fads ?



VIVIEN SHIVERS

*Major:* Mathematics

*Minor:* Secondary Education

Mathematics Club 1; Vice-President  
Sophomore Class 2; President Junior  
Class 3; Honor Roll 1, 2, 3

PATRICIA SIMON

*Major:* Mathematics

*Minor:* Psychology

Cheerleader 3; Student Council 3;  
President of Swimming Club 3, 4; Com-  
mittee on Appeal for Human Rights 4;  
President of Abby Aldrich 4

RUBY SMITH

*Major:* Physical Education

Committee on Appeal for Human  
Rights

ANITA SPANN

*Major:* Mathematics

*Minor:* Secondary Education

Sunday Morning Choir (Morehouse)  
4; Glee Club 1, 2, 3, 4; AMS Chorus  
2, 3, 4; YWCA 1, 2, 3, 4; Day Stu-  
dent's Organization 3; Pre-alumnae  
Club; UNCF 3







FLETA THOMAS

*Major:* Social Science

*Minor:* Elementary Education

Social Science 3, 4; Swimming Club 3; Library Club 2, 3; Sunday School Council 2



GLENZY THOMAS

*Major:* Home Economics

*Minor:* Secondary Education

Glee Club 1, 2, 3, 4; Chorus 4; Sunday School (Secretary) 3; Home Economics Club 1, 2, 3, 4 (Vice President) 3, 4



PATRICIA TRUITT

*Major:* Social Science

Day Students Organization; YWCA; NAACP

YVONNE TUCKER

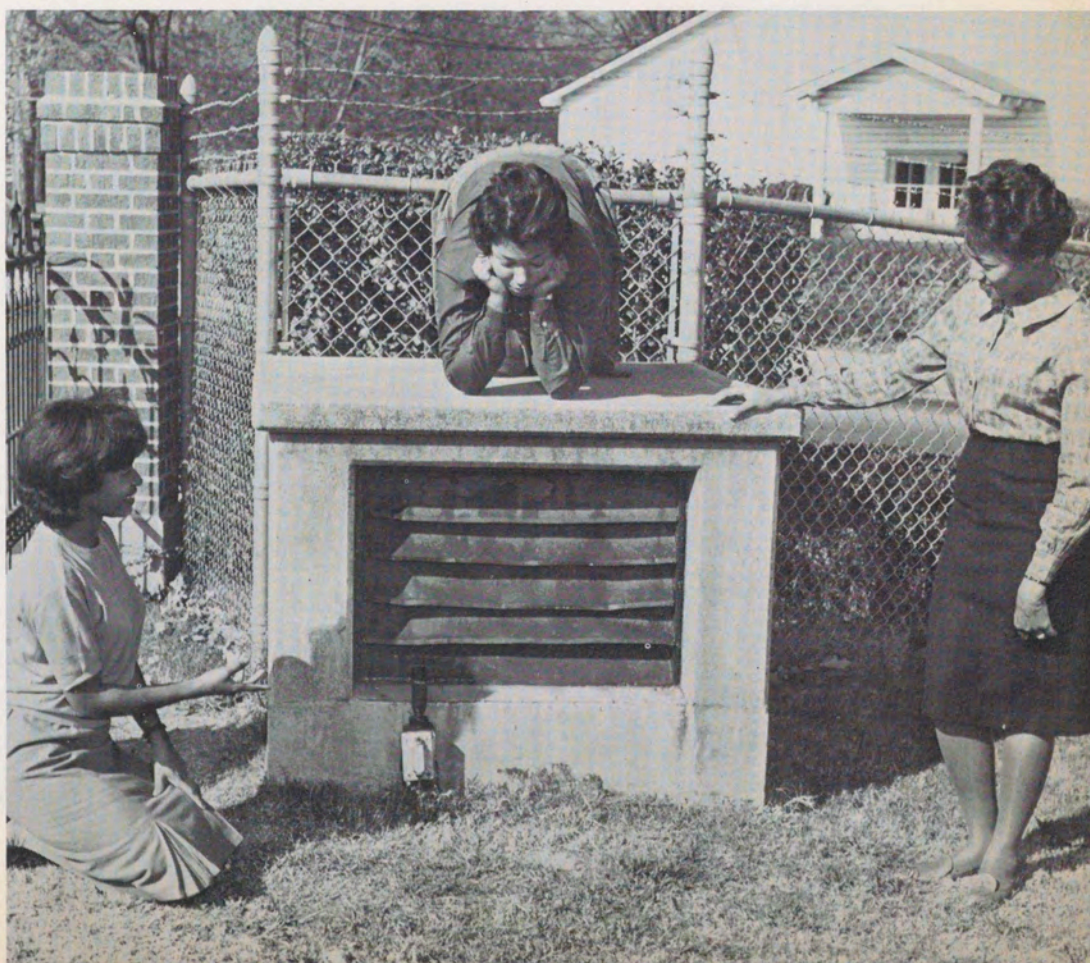
*Major:* Psychology

*Minor:* Elementary Education

Swimming Club 2; AMS Players 1, 2, 3, 4; AMS Chorus 1, 2, 3, 4; Glee Club 1, 2, 3, 4



Is this Spelman's fall-out shelter?







TOMMIE TURNELL

*Major:* Social Science

*Minor:* Secondary Education

Swimming Club 1; Social Science Club 4; Spanish Club 2



GWENDOLYN WALES

*Major:* Social Science

*Minor:* Secondary Education

Spanish Club 1; Social Science 4; NAACP 3; Reflections Staff



PATRICIA WARD

*Major:* Psychology

*Minor:* Elementary Education

Day Students Organization; YWCA; NAACP

No, not now. Wait until I say when.



MARY WATTS

*Major:* English

*Minor:* French

Adams Hamilton Prize 1; Phi Delta Phi 2; Merrill Scholar 1960-61







PATRICIA WHITE

*Major:* Biology

*Minor:* Chemistry and German

Adams-Hamilton Prize 1; Miss Sphinx 1; Miss Torch 2; Miss Alpha 3; Biology Club Bird Identification Prize 2; Merrill Scholar 3; Trevor and Bertha Arnett Scholarship 3; Glee Club 1, 2, 3



"Alas, poor Yorick! I knew him well!"  
Hamlet

JEAN WILBORN

*Major:* Music

Glee Club

ALMA WILLIS

*Major:* Home Economics

*Minor:* Secondary Education

Dormitory Council 1; Budget Board 2; Secretary-Home Economics Club 4; Yearbook Staff 3

BARBARA YOUNG

*Major:* Social Science

*Minor:* Secondary Education

Glee Club 1; Chorus 1; AMS Players 2; Social Science Club 3; NAACP 4







## Senior Reflections

September, 1958, we came to Spelman fresh, excited, eager, uncertain, and not entirely ready to relinquish high school sentiments. There were many of us—some old friends, but most of us total strangers. How full, varied and hectic were those first weeks during which we became acquainted with roommates, “big sisters,” schoolmates, faculty members, a new curriculum, and life at Spelman in general. However, it was not long before most of us began to feel that we had been here for years. Assigning varying degrees of importance to study, worship, and play, we finally settled down to the business of determining the kinds of college lives we would lead.

The freshman year was a period of many firsts—first frat parties, Maroon and White Ball, Biffer Sisters, Christmas Carol Concert, Sweetheart’s Ball, Religious Emphasis Week, awakening to the bell on Packard Hall, wearing of white dresses on Founders Day. It was the first time away from

home for some of us, the first encounter with such difficult courses for many of us, and the first realization of the responsibilities of adulthood for most of us.

Our freshman year was also a period of many little successes and achievements. Our class was the largest freshman class to have enrolled at Spelman up to that time. The Freshman Production of 1958 is still acclaimed by many as having been one of the best productions ever presented at Spelman. We had six classmates in the Maroon and White Court that year. They were Peggy Twyne, “Miss Freshman,” Margaret Smith, “Miss M Club,” Deborah Gaddis, “Miss YMCA,” Rochelle Rhodes, “Miss Scroller,” Patricia Ware, “Miss Lampoda,” and Dorothy Alexander, “Miss Sphinx”. Minnie Riley won the MacGregor Prize. Mary Frances Watts and Joan Andrews shared the Adams-Hamilton Prize.





We elected as our first class officers Gwendolyn Eagleson, president, and Elizabeth Bradshaw, vice president. Mrs. Isabel Webster was class sponsor.

Despite the difficult lessons and many adjustments which had to be made, the class of '62 survived her freshman year.

The second year, we returned to Spelman, again eager and excited. We were now upperclassmen and the confidence of our new status radiated in all directions.

We elected Gwen Eagleson as class president and Vivien Shivers as vice-president. Mrs. Grace Boggs was class sponsor.

Residentially we were divided between Morgan Hall and our respective homes in the city of Atlanta.

As sophomores we began to make ourselves known in all aspects of campus life. Some of us were elected to Student Government offices, and others joined departmental clubs and various campus organizations.

Our classmates in the Maroon and White Court were Maudestine Simmons, "Miss Sophomore", Carol Jackson, First Attendant to "Miss Alpha", Dorothy Alexander, Second Attendant to "Miss Alpha", Sheila Cunningham, First Attendant to "Miss Omega", Betty Howell, Second Attendant to "Miss Sigma", and Mary Ellis, "Miss Sigma".

Minnie Riley won the Florence Matilda Read Award. Anna Hankerson won the Louise Fowler Award. Martha Randall won the Birdwatching Contest. That year, Elizabeth Bradshaw participated in the first Exchange Program. She attended Bethel College, North Newton, Kansas for one semester.

The big class project for the 1959-60 school year was the Sophomore Ball. This event took place in the spring and was a big success.

How quickly time passed. Before we realized it, we were juniors. By now our class was much smaller than the group of 1958:

Vivien Shivers was elected class president and Anna Hankerson vice-president. Mrs. Freddie Henderson was class sponsor.







During the summer prior to our return, Carol Jackson participated in a "Crossroads Africa" project. She spent nine weeks in the French Cameroons where she helped to build a Presbyterian Chapel.

Priscilla Rowe was the junior exchange student. She spent a "very profitable" semester at Elmira College, Elmira, New York. Minnie Riley won both the Lucy Upton Prize and the Amy Chadwick Award. Later that year, she was elected SSGA President for 1961-62. Joan Andrews was selected to be one of the Merrill Scholars for the 1961-62 school year.

The junior year was prom year. The theme of our prom was "Evening in Paris". Under the instruction, urging and sometimes scolding of Dorothy Alexander, we spent many long, hard, hours making flowers, awnings, and Eifel Towers. But we had fun working and it was a beautiful prom.

Class Day came, and we performed our various duties. We

began to realize that the end of college days was fast approaching.

September, 1961, we plunged into the new school year. Anna Hankerson was elected class president and Merdis Davis, vice-president. Mrs. Grace Boggs was class sponsor.

Carolyn Gaither was "Miss Senior" and Rochelle Rhodes was Second Attendant to Miss Maroon and White. Mary Frances returned from her studies abroad; Joan began her studies away.

One of the great moments of the year came when the seniors won the Thanksgiving Rally. As the year passed, semester exams took their toll; Student Teaching ended; the Sweetheart's Ball, Founders Day, and the Spring Concert took place. Graduation Day came. And in the day of ending and beginning, we went forward with the excitement of a freshman, the confidence of a sophomore, the maturity of a junior, and the feeling of accomplishment which only a senior could know.





A group of juniors relax after a busy day with their professors.





*Left to Right: Phyllis Umstead, Vice-President; Callie Herndon, Treasurer; Barbara Brown, Secretary; Emilie Winston, President*

## THE JUNIORS—CLASS OF 1963

JUNIOR YEAR . . . Homecoming queens . . . English Fundamentals Exam . . . Junior Production . . . Who's Who elections . . . Merrill Scholars . . . Junior-Senior Prom . . . election of next year's SSGA President . . . Forming the pathway to the arch for senior sisters. Juniors are well on their way, and each year proves to be quite different from the last. Through the coming year, the juniors will sing of Spelman:

How lovely the landscape outspread at  
thy feet,  
Where hill, vale, and streamlet in  
harmony meet;  
Oh, long may thy children with gladness  
return,  
To bless the fair spot where thy  
signal lights burn.



Mrs. Grady Butler, Sponsor





Ann Ashmore



Jean Berrien



Carole Bessent



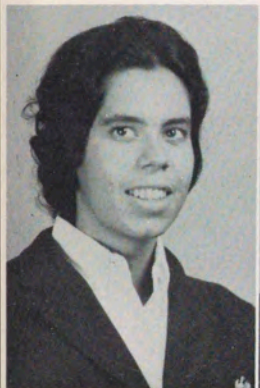
Ruth Birchette



Dorcas Boit



Bessie Boyd



Ernestine Brazeal



Barbara Brown



Barbara Bursey



Charlotte Cherry



Katie Coleman



Earnestine  
Crawford



Beverly Curry



Bettye Darden



Bettie Durrah



Esther Evans



Barbara Freeman



Sarah Freeman



Cecile Ganpatsingh



Mary Gardner



Venecia Gardner



Mignon Henry



Callie Herndon



Amanda Hicks





Barbara Hill



Brenda Hill



Amy Holley



Estrelita Holloway



Rhoda Horne



Tommie Hughes



Gwendolyn Iles



Audrey Irvin



Lessie Jackson



Louise Jackson



Gloria Johnson



Margaret Kenner



Gail King



Nelda King



Imo Lee



Billie Mack



Florine Mack



Barbara Martin



Loretta Matthews



Sonya Mixon



Marcia Moton



Dorothy Myers



Ouida McDougal



Caroline Nicol





Mona Norman



Barbara Odom



Blondean Orbert



Eula Persons



Donnie Pickett



Mildred Ponder



Barbara Poole



Jennifer Ragwar



Versie Raines



Mary Reid



Earlene Robinson



Bessie Sallaway



Adye Bel Sampson



Dorothy Sampson



Katherine Scott



Edith Simmons



Alfreda Smith



Antonia Smith



Joyce Smith



Patricia Smith



Sammolene Smith



Naomi Springer



Agnes Stanley



Jessie Stith





Henrietta Stocks



Marilyn Sweeting



Jeanette Tarver



Robbie Tate



Lana Taylor



Marie Thomas



Electa Twyman



Phyllis Umstead



Bronwen Unthank



Georgene  
Washington



Beverly Whatley



Carolyn Willis



Ethelyn Willis



Emilie Winston



Carolyn Wright





*Left to Right: Alice Morgan, Treasurer; Sandra Hawkins, Publicity Chairman; Betty Stevens, President; Ida McCrea, Vice-President; Josephine Dunbar, Social Chairman; Neena Shelton, Reporter.*

## THE SOPHOMORES—CLASS OF 1964

SOPHOMORE YEAR . . . A few more social privileges . . . General Psychology . . . participating in more extracurricular activities . . . Sophomore Production . . . Reception at the Manleys . . . another reading exam . . . SSGA elections . . . Merrill Scholars . . . Someone said the freshman year was the hardest! Despite the hard work, Sophomores sing:

How bright was the day when we entered thy hall!  
 What lessons of duty and truth we recall!  
 We felt new life throbbing, we found a new world,  
 As knowledge its banner above us unfurled.



Mrs. Sadie Allen

(Upon leave of absence of Mrs. Rosalyn Patterson)





Sophomores are proud of their successful Benefit Dance.





Renee Adkins



Virginia Akridge



Rita Alexander



Yvonne Alford



Judith Allen



Johnetta Anderson



Elinor Atkins



Lugenia Beasley



Sadye Beasley



Adelia Boger



Gloria Boyd



Nell Braxton



Genevieve Brazier



Johnnie Brown



Shirley Bullard



Willenor Caruthers



Annease Chaney



Carol Clark



Malinda Clark



Clayton Copeland



Janice Craig



Carrie Davis



Evelyn Davis



Jacquelyn Dennis





Deborah Dorsey



Barbara Douglas



Ann Drake



Gloria Dukes



Josephine Dunbar



Joyce Ferrell



Miriam Flagg



Carolyn Foley



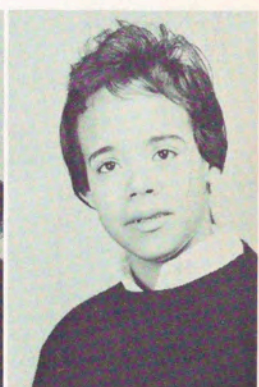
Betty Gibbs



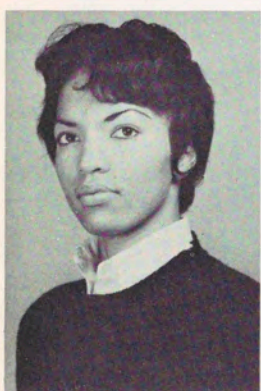
Ophelia Gilbert



Barbara Glover



Marsha Goodwin



Catherine Grant



Ann Graves



Barbara Gresham



Sandra Griffin



Sunny Guider



Betty Hall



Marjorie Hall



Margaret Hampton



Addie Harris



Shirley Harris



Sandra Hawkins



Joyce Hawthorne





Marshall Head



Carole Henderson



LaJoyce Henderson



Barbara Henry



Mercedes Hill



Eleanor Hinton



Lucia Holloway



Lorna Hosein



Leola Hubbard



Royalene Huff



Eleanor Hughey



LaVera Jackson



Louise Jackson



Mary Jackon



Dorothy Jenkins



Mildred Jennings



Carolyn Johnson



Edna Johnson



Mary Johnson



Annette Jones



Brenda Jones



Faye Jones



Marcelite Jordan



Bernette Joshua





Charles Kendrick



Gloria Knowles



Barbara Lamar



Leola Laster



Runelle Lawrence



Barbara Lee



Brenda London



Sharon Lundy



Clara Manns



Cecile Marshburn



Gloria McCants



Kercenna  
McChriston



Nancy McClendon



Brenda McCoy



Ida Rose McCree



Joycelyn McKissick



Joanne Merry



Elaine  
Middlebrooks



Charlotte Mize



Myrtis Mizell



Alice Morgan



Brenda Mosby



Wendolyn Murphy



Shirley Myers





Pearlle Orr



Edwina Palmer



Elizabeth Parnell



Dorothy Peek



Georgia Perryman



Billie Pitts



Carmelita Pitts



Clara Prioleau



Mary Reeder



Katie Reeves



Ridgely Renwick



Doris Roberts



Mildred Roberts



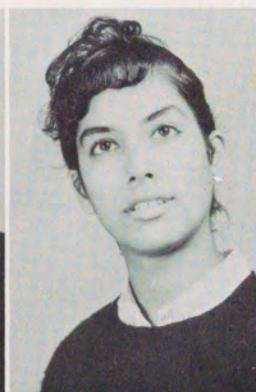
Barbara Rodgers



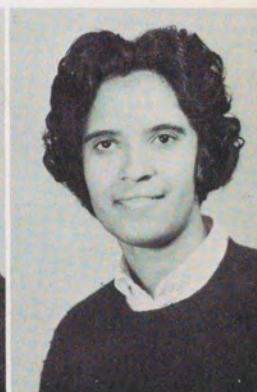
Constance  
Roseberry



Willie Sheffield



Neena Shelton



Kay Shepherd



Carolyn Sims



Roberta Smith



Wenda Smith



Betty Stevens

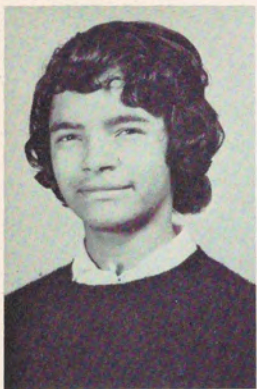


Louisa Steward



Leronia Stokes





Jean Terry



Georgianne Thomas



Windy Thompson



Lois Turner



Cynthia Wallace



Barbara Warren



Alice Washington



Patricia Wahington



Jean Waymer



Yvonne Weatherly



Anna Jo Weaver



Geneitha Welch



Lois Weston



Joyce White



Ann Wiggins



Valjean Williams



Emilie Williamson



Myrtis Willis



Betty Wilson



Lorna Wilson



Yvonne Woodard



Delores Woodward



Delores Young





Freshmen being greeted by the sophomore, senior, and junior class presidents

## THE FRESHMEN-CLASS OF 1965

FRESHMAN YEAR . . . Freshman Week . . . examinations . . . Do's and Don't's Skit . . . YWCA Party . . . Get Acquainted Dance . . . Freshman-Faculty Dinner . . . the "walk" to Friendship Baptist Church . . . Registration . . . Freshman Orientation . . . blue caps and sweaters . . . Biology lecture . . . Freshman Production . . . finding big sisters. These are only a few of the exciting and unique experiences that are first steps of the journey toward a Bachelor's Degree. Along this journey freshmen sing:

Fair Spelman, sit crowned in beauty  
thine own,

A beacon of grace, and a queen on  
her throne;

The wreaths for thy brow are not  
perishing bays,

But love of thy children and their  
grateful praise.



Mrs. Sadie Allen, Sponsor





A group of freshmen enjoying the snow





Delores Adkins



Donna Alexander



Victoria Alexander



Emma Allen



Sonia Allen



Camille Alston



Rosalind Andrews



Jimmie Andrews



Lucille Baker



Lucinda Baldwin



Verna Barksdale



Doris Bebee



JoAnne Bethel



Esta Bezhura



Celestine Billups



Rosemary Braxton



Aurelia Brazeal



Carolyn Bridges



Mary Brock



Sara Brooks



Freddie Brown



Sheridan Brown



Shirley Bryant



Sandra Burton





Betty Byrd



Keva Carey



Blanche Carter



Velma Charles



Onnie Mae  
Coleman



Karen Cooper



Myrtle Coppedge



Carnelia Cosby



Virginia Cotton



Dorothy Dailey



Katie Davis



Mamie Davis



Marilyn Davis



Peggy Davis



Phyllis Davis



Ruth Davis



Tama Davis



Gloria Dennis



Patricia Dixon



Aingred Dunston



Mary Dupree



Camille Durden



Barbara Durrah



Bennie Sue  
Edwards





Charlotte Ellis



Tana English



Mary Evans



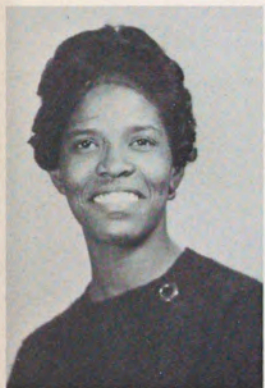
Joyce Felder



Carmen Fennoy



Mollie Finch



Barbara Finley



Vyviene Ford



Alberta Foster



Mary Franklin



Ollie Freeman



Dorothy Fugua



Mary Gaither



Millicent Gamble



Mary Ann Geer



Edna Glaze



Ollie Godfrey



Alice Goseer



Shirley Grier



Delores Griggs



Barbara Haile



Edith Hammond



Dorothy Harden



Queen Hardnett





Charlotte Harris



Mary Hendrix



Barbara Henry



Jeannie Holloway



Marilyn Holt



Barbara Hosea



Patricia Howard



Theresa Howard



June Hubbard



Jacqueline Hunter



Diane Irving



Jerri Jackson



Constance Jacobs



Georgene James



Anna Jefferson



Corine Johnson



Hubert Johnson



Mirian Johnson



Patricia Johnson



Carole Jones



Carolyn Jones



Vivian Jones

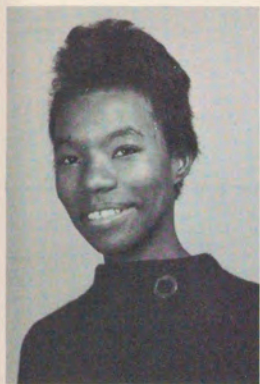


Sandra Joyner



Grace Kelly





Penelope Kelly



Katharine Kendrick



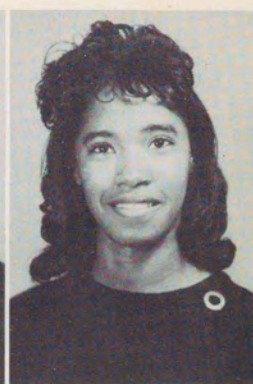
Karen Kerry



Willena Kiinpson



Yvonne Kyles



Andrea Lampkin



Sylvia Lawrence



Gwendolyn  
Ledbetter



LaVern Lee



Gwendolyn Lewis



Geraldine Lyons



Roselyn Malcolm



Rose Marion



Sandra Marshall



Dianne Matthews



Gloria Matthews



Lillian Mayfield



Trudy McClure



Madeline  
McCullough



Ernestine  
McDaniel



Flossie McKerson



Bettye Mitchell



Sandra Mitchum



Sandra  
Montgomery





Eva Moon



Cheryl Moore



Mary Sue Morgan



Jacquelyn Myles



Constance Nabwire



Patricia Odom



Rosalind Parker



Corliss Paschal



Beverly Pettigrew



Sylvia Pindle



Marilyn Poles



Lelia Potts



Faye Powell



Judith Pruitt



Yvonne Ramey



Mary Ray



Rosalind Reid



Marian Rucker



Sandra Sands



Barbara Sharpe



Marian Shivers



Carolyn Simmons



Adrien Smith



Arlita Smith





Daisy Smith



Estelle Smith



Evelyn Smith



Jane Smith



Patricia Stephens



Eloise Stevens



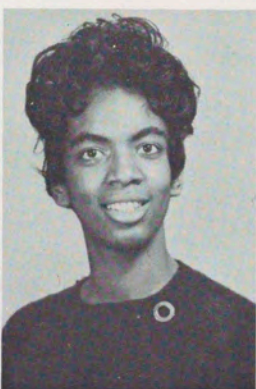
Evelyn Terry



Sandra Terry



Judy Tillman



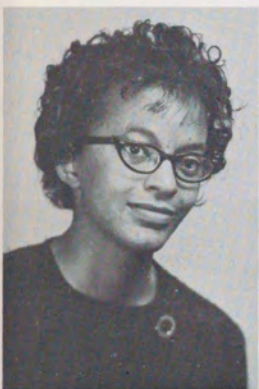
Rosa Thomas



Carolyn Thompson



Patricia Thornton



Cecelia Tucker



Delores Turner



Alice Walker



Linda Watley



Janice Webb



Stephine Wells



Clara Whipple



Barbara Whitaker



Audrey White



Charles Etta White



Barbara Widemon



Christine Williams





Gwendolyn  
Williams

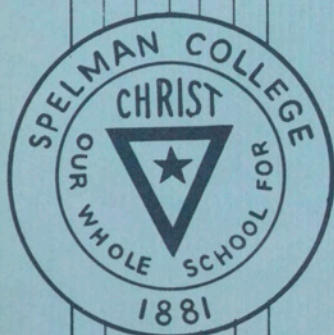
Gloria Willis

Gloria Woods

Joyce Wright

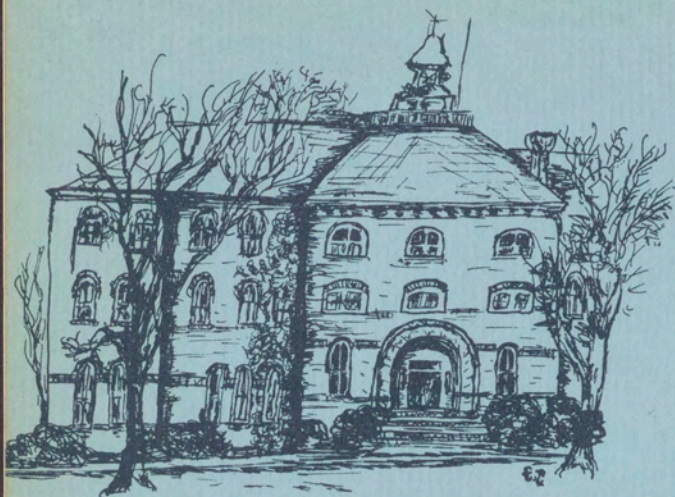






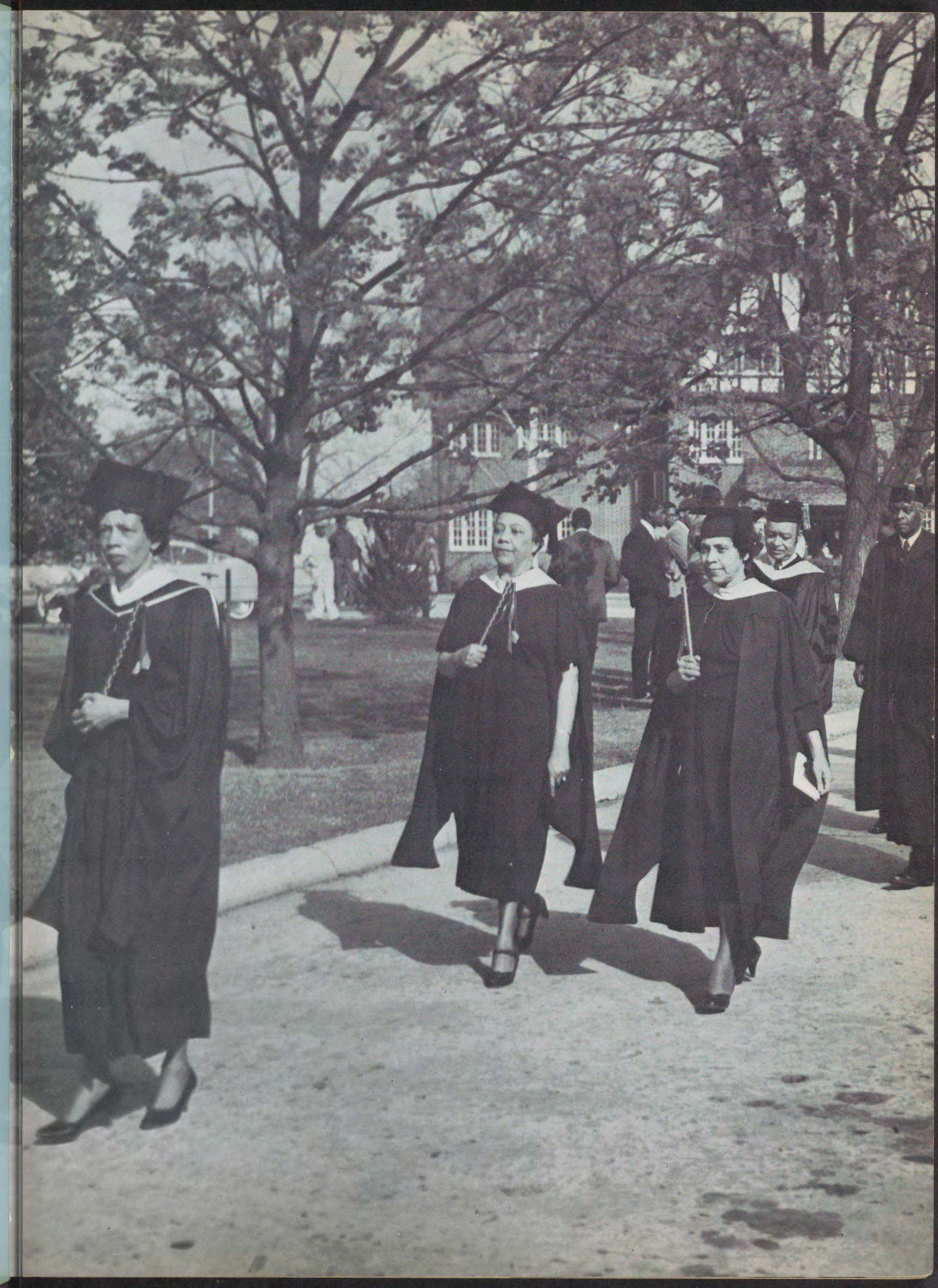
# ACADEMICS



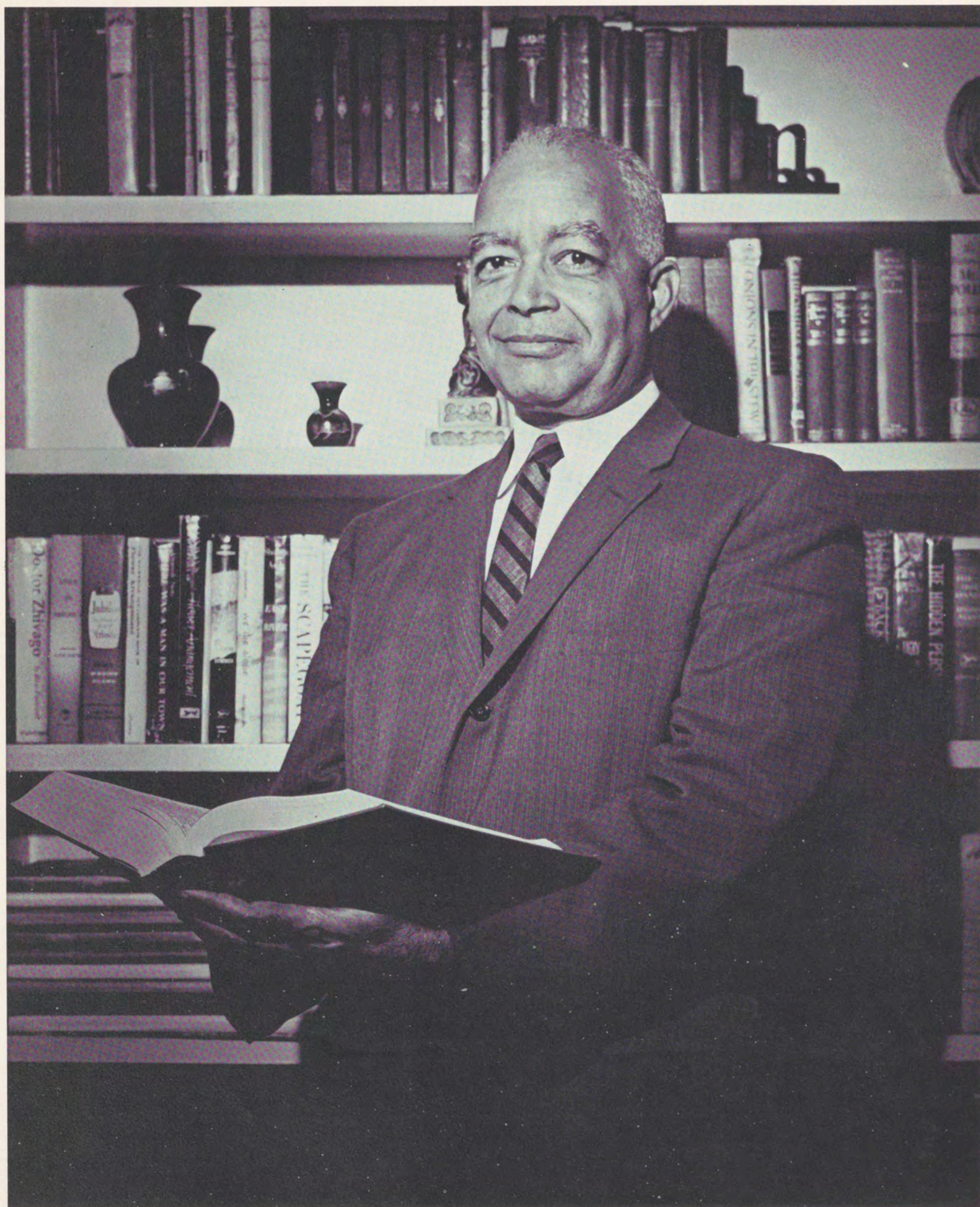


ADMINISTRATION  
SECRETARIES  
AND  
ASSISTANTS  
  
FACULTY  
STAFF









DR. ALBERT E. MANLEY, *President*





Mrs. Grace J. Perry, *Registrar*



Miss Mercile Johnson, *Dean of Women*



Dr. Oran W. Eagleson, *Dean of Instruction*

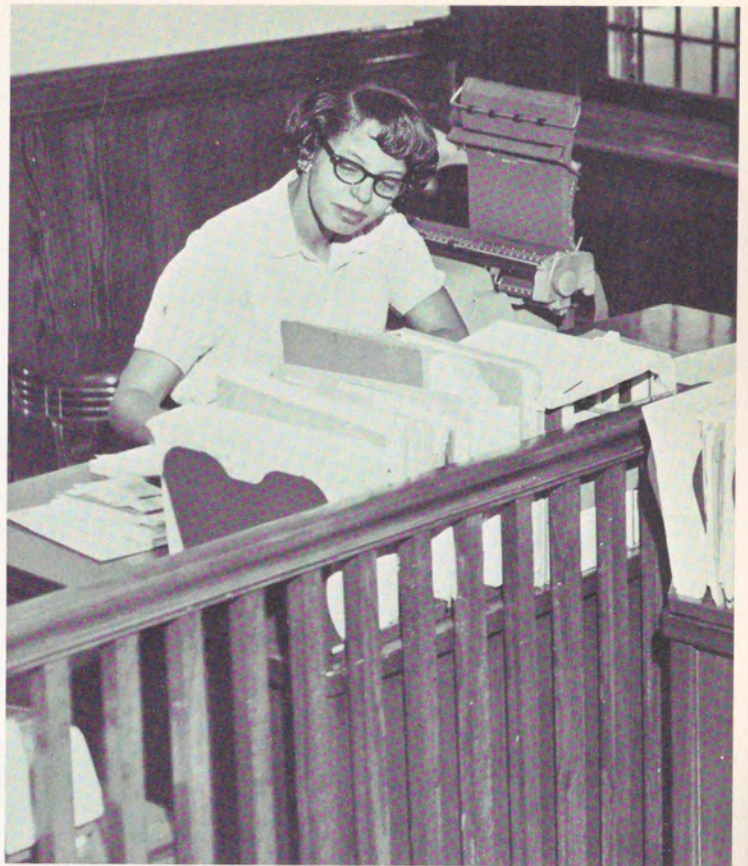


Mr. John L. Coe, *Assistant Treasurer*





Miss Claressa Hightower, *Secretary  
President's Office*



Mrs. Jeanne Zanders, *Secretary  
President's Office*



Mrs. Sadie Gaines, *Assistant Registrar*



Mrs. Sadie Allen, *Assistant Dean of Women*





Miss Geraldine Simmons, Secretary  
Dean of Women's Office



Mrs. Ernestine Brazeal, Alumnae Secretary



Mr. Norman Rates,  
College Minister

Left: Mrs. Elizabeth Bolden, Bookkeeper

Right: Mrs. Pauline Martin, Cashier  
Treasurer's Office



Mrs. Alice Lynd, Secretary  
Dean of Instruction's Office







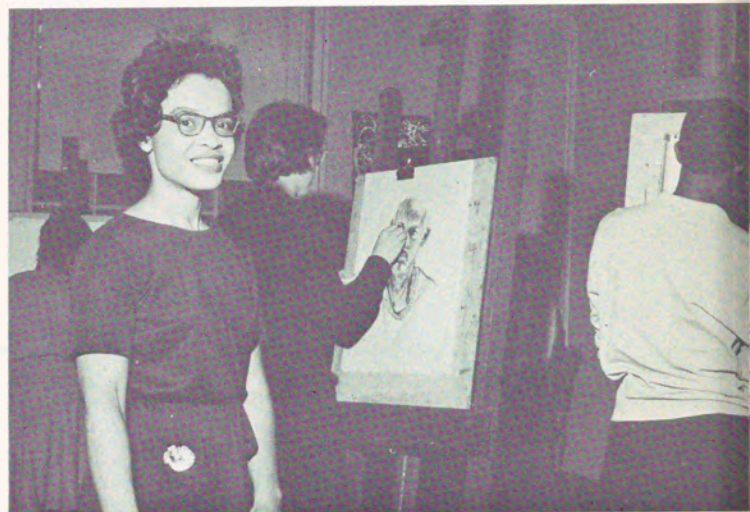
Mr. Edwin Cerney, Chairman  
Art Department



Miss June Hector, Art

ART . . . Emotions expressed in color . . . long, interesting lab hours . . . distinctive smell of paint . . . development of skill in all media . . . ashtrays for friends . . . last minute rush to meet semester requirements.

SPEECH AND DRAMA . . . Phonetic symbols . . . "using teeth, tongue, and lips" . . . five minute speeches . . . try-outs . . . practice, practice, and more practice . . . dress rehearsal . . . first performance . . . shattered nerves . . . praise and criticism.



Mrs. Jenelsie Holloway, Art

Dr. James P. Cochran, Speech and Drama



Dr. Baldwin Burroughs, Chairman of Department of Speech and Drama







Dr. Robert Pearsall, Chairman



Mrs. Millicent D. Jordan

ENGLISH . . . Freshman themes . . . book reports . . .  
 Sophomore literature . . . The Iliad . . . English majors  
 . . . more reading . . . and writing . . . graduation with  
 a knowledge and appreciation of fine writing.



Dr. Renate Wolf

Mrs. Esta K. Seaton



Mrs. Helen B. Brooks







Mrs. Clare Haac, French



Mrs. W. Geter Thomas, French

FRENCH . . . The first startling introduction to the subjunctive . . . French history coming alive in the "Song of Roland" . . . Montaigne . . . and Rabelais.

SPANISH . . . Learning rules of grammar . . . the escapades of Don Quixote . . . the assurance of learning under the instruction of Senorita Howard.

Dr. Benjamin F. Hudson, French  
Atlanta University Exchange Professor



Miss Camilla Howard, Spanish







Dr. William L. James, Chairman  
Music Department



Dr. Grace J. Boggs, Music



Mr. Alan Kagan, Music



Mrs. Joyce F. Johnson, Music

MUSIC . . . Bach, Beethoven, Mozart, and Debussy . . . harmony, rhythm, and counterpoint . . . long hours of practice . . . strides toward perfection.

RELIGION . . . points to ponder . . . what do I believe? . . . Moses, Abraham, Paul . . . the old, familiar stories viewed in a new light . . . a desire to know more with each bit learned.



Mr. Norman Rates, Religion





Dr. Howard Zinn, Chairman  
*History and Social Science*

Mrs. Lois Moreland  
*Social Science*

PHILOSOPHY . . . Unlimited efforts . . . constant reading . . . Plato . . . St. Augustine . . . Descartes . . . Bergson . . . papers . . . thought provoking exam questions . . . "If two or more of the four philosophers studied were in Heaven" . . . a better knowledge of philosophical thought.

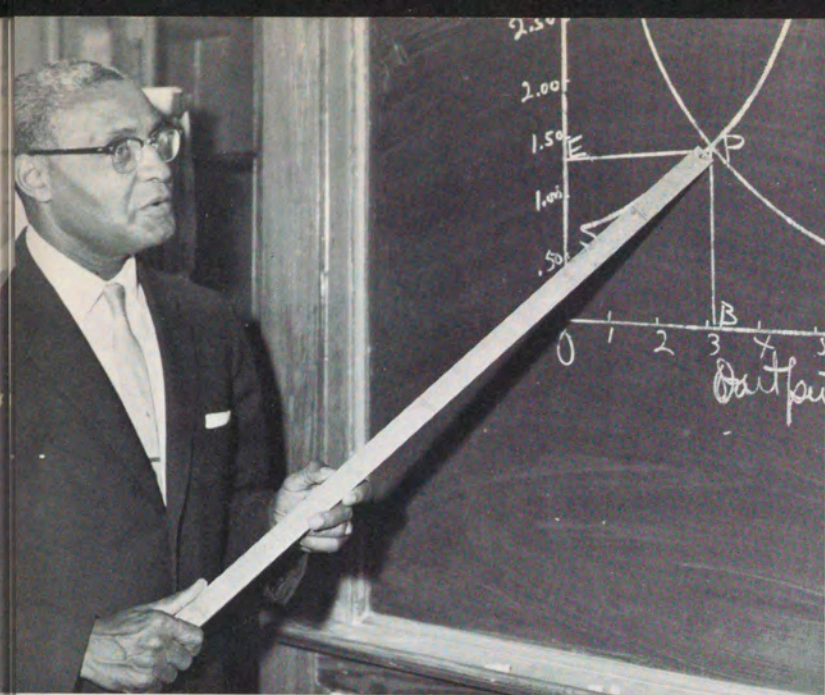


Mr. Harvey Brimmer  
*Philosophy*

Dr. Marilyn Pearsall  
*Sociology*







Dr. E. B. Williams, Exchange Professor  
Morehouse College, Economics Department



Mr. Staughton Lynd  
History and Social Science

HISTORY AND SOCIAL SCIENCE . . . European History . . . bewildered looks . . . American History . . . study up to and beyond the Civil War . . . new courses in Non-Western Studies Program . . . Sociology . . . an understanding of man in all his relationships . . . Spelman students become aware of the hows and whys of their past, present, and future.



Dr. Clarence Bacote, Exchange Professor  
Atlanta University History Dept.

Mrs. Elizabeth Macomson, History and Social Science

Mrs. Margaret Curry, History and Social Science







Mrs. Charlie S. Henderson

HOME ECONOMICS . . . Foods . . . meal planning . . . what to eat . . . what not to eat . . . clothing . . . learning what to buy . . . charts . . . posters . . . menus planned to spend "a little to get a lot" . . . residence in Laura Spelman.



Miss Zelma Payne

Mrs. Sadye Young, *Home Economics & Nursery School*  
Departmental Chairman







Dr. X. L. Neal, *Chemistry*

BIOLOGY AND CHEMISTRY . . . Lecture  
 . . . panic . . . lab . . . practicals . . . majors  
 . . . study of comparative anatomy . . .  
 experiments . . . learning the "facts of chemistry"  
 . . . what a complicated world!



Dr. M. Myles, *Biology*



Mr. J. Q. Caruthers, *Biology*



Dr. Barnett Smith, *Chairman  
 Biology Department*



Mr. Richard Widdows, *Biology*



Mrs. Rosalyn Patterson  
*Biology*





Mrs. Shirley McBay, Chairman  
Mathematics Department

MATH . . . Quadratic equations . . .  
a few studying calculus . . . work,  
work, and more work . . . theories  
and principles to be retained.



Miss Gladys Thomas, Mathematics



Mr. John L. Coe, Mathematics



Mrs. Christine K. Farris, Education

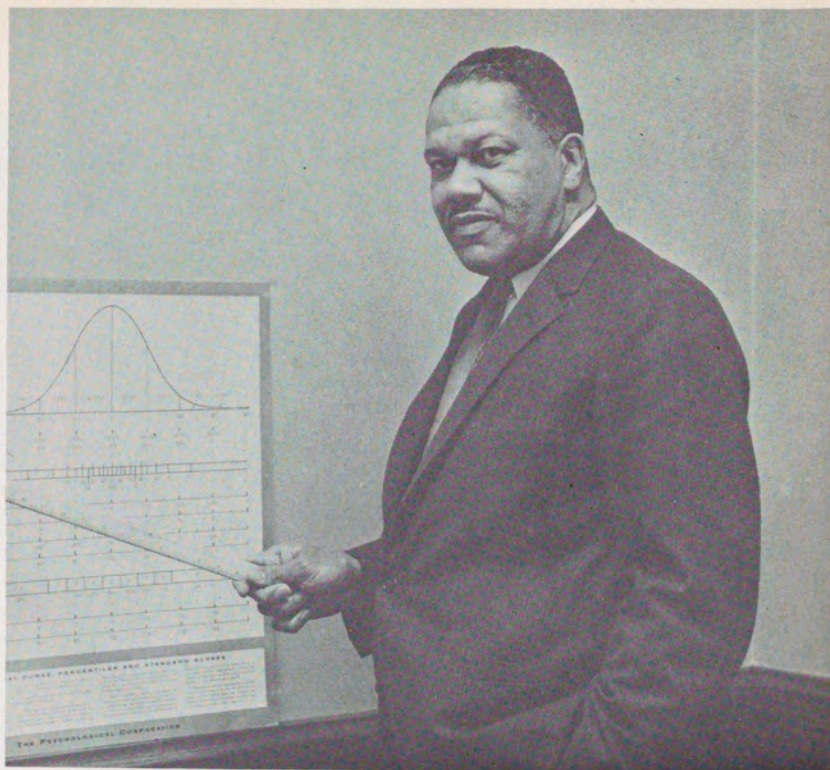


Mrs. Mexico Mickelbury, Education





Mrs. Jean Smith, English and Education



Dr. Oran W. Eagleson, Chairman  
Department of Psychology and Education

Mrs. Naomi Chivers, Education



Mrs. Beatrice Williams, Education



Mrs. Bertha Butler, Education and Psychology



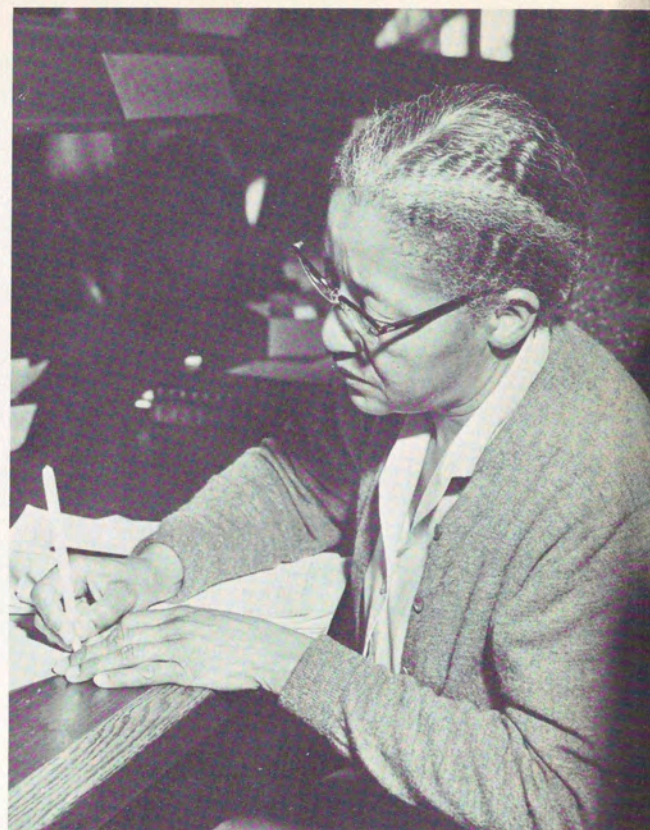
EDUCATION . . . Preparation to meet the challenge of student teaching . . . determining one's educational philosophy . . . graduates capable of guiding young, eager and sometimes apathetic minds.





Miss Gloria Starks, Chairman  
Physical Education Department

PHYSICAL EDUCATION . . . "Keep in position"  
"Point those toes" . . . the inevitable too large gym suit  
. . . conservative college swim suits . . . "Just relax" . . .  
"But Miss Starks, I'm drowning" . . . the sound of bowl-  
ing balls in the bowling alley . . . a great variety of activ-  
ities under capable instructors.



Miss Marguerite Simon



Mrs. Hildegard Bennett



Miss Margaret Howard



# NURSERY SCHOOL



Mrs. Sadye Young, *Head of  
Nursery School*



Mrs. Lena Sayles

NURSERY SCHOOL . . . First time away from home . . . strange faces . . . eventually new friends . . . nursery rhymes . . . songs . . . games . . . preparation for the young adult world.



Miss Bette Taylor



Mrs. Rosa P. King



## Faculty Counselors



Faculty counselors serve as advisors to members of the freshman class. *Not pictured:* Dr. Grace Boggs; *Pictured—L to R:* Mrs. Allen, Mrs. Mickelbury, Rev. Rates, Dean Johnson, Mrs. Gaines, Mrs. B. E. Williams



## Library

Mrs. Mexico Mickelbury, Librarian; Miss Hulda Wilson, Assistant

## Housemothers

*L to R—*Miss Taylor, Mrs. Willis, Mrs. Thompson (center), Mrs. Moffitt, and Mrs. Hardeman





## Infirmary



NURSES—Mrs. Wise and Mrs. LaVette; Dr. Warner

## Buildings and Grounds Mr. Albert Wilson, Superintendent



## Laundry Mr. A. M. Gamble, Superintendent







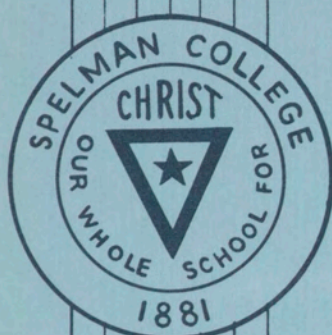
## Snack Shop

Snack Shop and Dining Hall under operation of Campus Chefs

## Dining Hall







CLUBS

*and*

ORGANIZATIONS





ON THE FOLLOWING PAGES:

STUDENT  
GOVERNMENT  
PUBLICATIONS  
ORGANIZATIONS  
DEPARTMENTAL  
CLUBS





Minnie L. Riley, *President*



Brenda S. Hill, *Vice-President*

## SPELMAN STUDENT GOVERNMENT ASSOCIATION

### PREAMBLE TO THE CONSTITUTION

We, the students, faculty and administration of Spelman College, in order to develop an *esprit de corps*; to develop techniques necessary for the assumption by students of responsibilities in a democratic society; to promote student self-discipline and leadership, to encourage high standards of school conduct, scholarship and morals; and to develop a spirit of cooperation in the college community do establish a government of Spelman College students and do ordain for its operation the Constitution [of the Spelman Student Government Association].

Members of the Student Council are: Carmen Fennoy, Adye Bel Sampson, Betty Stevens, Carol Clark, Priscilla Rowe, Dorothy Alexander, Felda King, Anna Hankerson, Barbara Martin, Ora Bruno, Dorcas Boit, Gwendolyn Eagleson, Elizabeth Bradshaw, Jeannette Tarver, and Henrietta Stocks







## Day Students Organization

The Day Students Organization meets the needs of non-resident students. Through this organization, non-resident students are given a voice in student government. The president of this organization is Jeannette Tarver; the vice-president is Beverly Whatley; and the sponsor is Dr. Boggs.

## Judiciary Board

The Judiciary Board hears cases, renders decisions, and imposes penalties in accordance with the powers stated in the Constitution of the Student Government.

*Members of the Judiciary Board are:* Miss Mercile Johnson, Mrs. Chivers, Mrs. Curry, Glenzy Thomas, Vivien Shivers, Barbara Barnett, Nelda King, and Sandra Hawkins.



Dean Johnson discusses a problem with two members of the Judiciary Board.



## Board of Review

The Board of Review renders decisions on recommendations submitted by the Judiciary Board. Students have the right to appeal any decision of the Judiciary Board to the Board of Review.

*Members of the Board of Review are:* Dr. Oran Eagleson, Miss Mercile Johnson, Miss Camilla Howard, Mrs. Grace Perry, Dr. Barnett Smith, Dorcas Boit, Gwendolyn Eagleson, Elizabeth Bradshaw, and Brenda Hill.

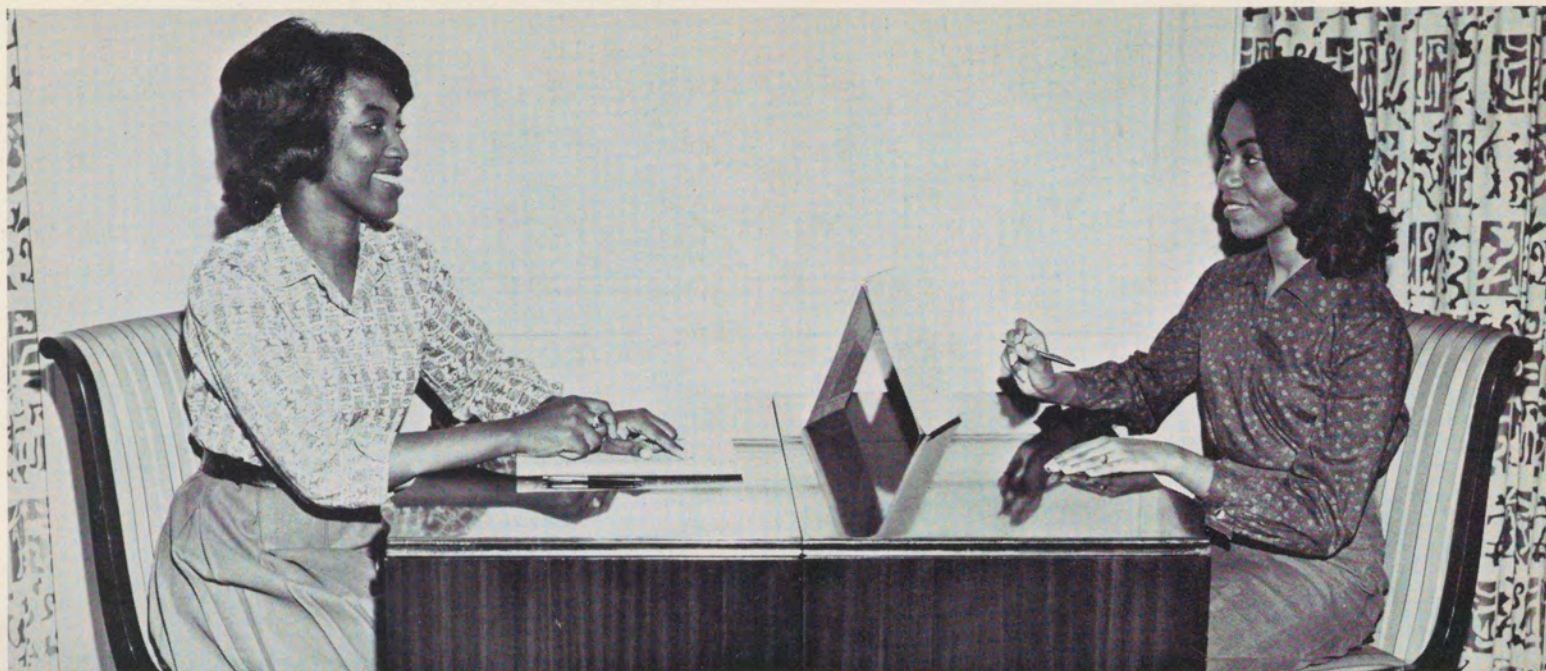
## House Council

The House Council is composed of presidents of each dormitory. This council has the power to establish, alter, and enforce dormitory regulations.

*Pictured from left to right:* Patricia Simon, Madeline McCullough, Sandra Hawkins, Alice Walker, Carmen Fennoy, Nelda King.







Dorothy Myers, Associate Editor; Nelda King, Editor; Mrs. N. Chivers, Advisor

## SPELMAN SPOTLIGHT

(Newspaper)

*First row, left to right: P. Rowe, J. White, P. Smith, J. McKissick, G. Willis, B. Martin; Second row: A. Morgan, H. Shannon, C. Ganpatsingh, L. Jackson, A. Owens, L. Arney, J. Berrien; Third row: Y. Weatherly, M. Sweeting, A. Sampson*







Priscilla F. Rowe, Editor-in-chief



Mr. J. Q. Caruthurs, Advisor

## SPELMAN REFLECTIONS (Yearbook)

*Front row, Left to right: Annette Hightower, Henrietta Laster, Cecile Ganptsingh, Fleta Thomas, Angela Owens, Lessie Jackson. Back row: Miriam Robinson, Donna Alexander, Merdis Davis, Marilyn Sweeting, Elizabeth Parnell, Clara Manns, Charlotte Harris, Bettye Clark, Lula Arney, Alma Willis.*







Barbara Adams, Business Manager



Adye Bel Sampson, Lay-out Editor

## REFLECTIONS STAFF



Barbara Barnett, Photography Editor  
Patricia Battle, Activities Editor



Elizabeth Bradshaw, Literary Editor





Gwendolyn Eagleson, Secretary  
Clara D. Horsely, Typist



Josephine Dunbar, Organizations Editor  
Edith Irvins, Art Editor



Vivien Shivers, Proof-Reader  
Minnie Riley, Proof-Reader



Dorothy Alexander, Advertising Editor



Anna Hankerson,  
Subscriptions Editor





## NAACP

President—Nancy Fesson; Vice-President—Mary Reid; Sponsor—Mrs. Lois Moreland

## YWCA (CABINET)



President—Martha Randall; Vice-President—Cecile Ganpatsingh; Sponsor—Mrs. Christine Farris

## GRANDDAUGHTERS CLUB

President—Sandra Banks; Vice-President—Patricia Washington; Sponsor—Mrs. Mexico Mickelbury







## Mid-Week Council

## Sunday School Council



Mr. Benjamin Bullock



Usherettes



## Religious Life

### Committee

Members of the Religious Life Committee not pictured are: M. Randall, J. Price, E. Evans, E. Brazeal, Mrs. Farris and Miss H. Wilson

Some Members of the Religious life committee discuss plans for Religious Emphasis Week with Dean Johnson



## ENGLISH CLUB



President—Priscilla Rowe; Vice-President—Nelda King



## SPANISH CLUB

President—Mary Reid; Vice-President—Earlene Robinson

President—Electa Twyman; Vice-President—Marsha Goodwin

## FRENCH CLUB







## ART CLUB

Members of the Art Club are Maudestine Simmons, Marilyn Sweeting, Edith Irvins, and Beverly Curry

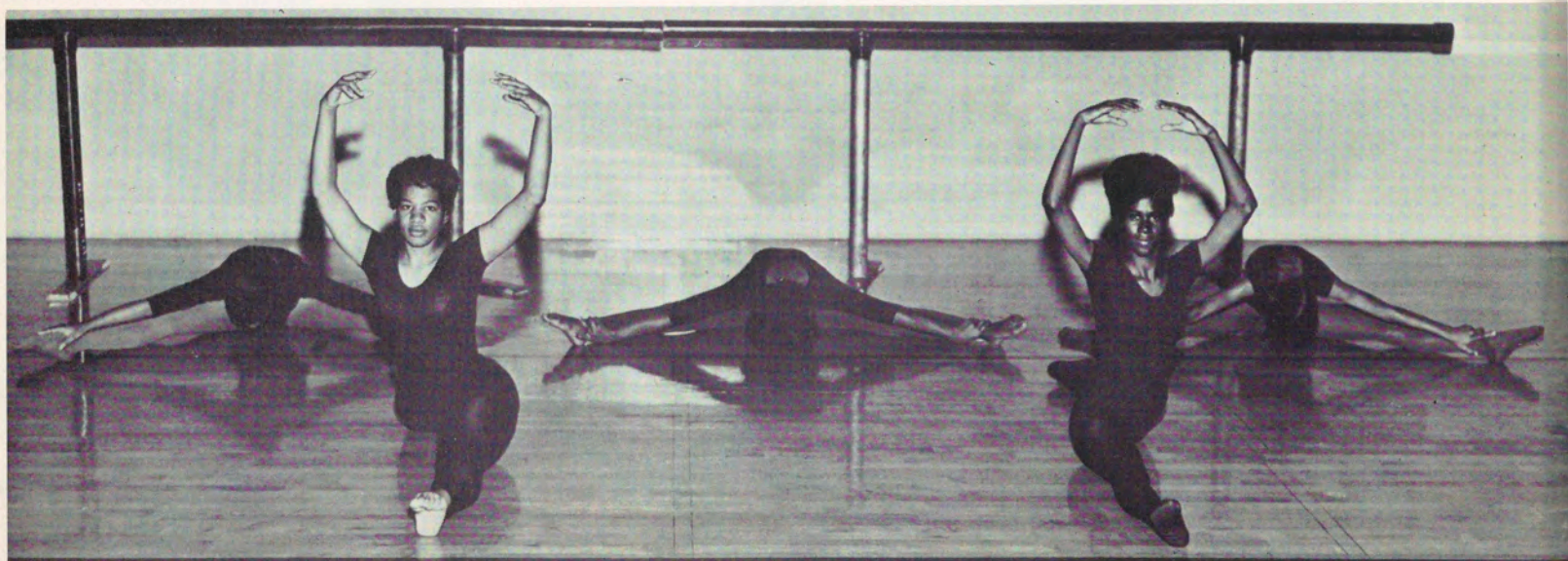


## DANCE CLUB

President—Marie Thomas, Vice-President—Carolyn Henderson;  
Advisor—Miss Margaret Howard

## PEM CLUB

The PEM Club is composed of Physical Education majors. Members of the PEM Club are: Joella Marshall, Ruby Smith, Alfreda Smith, Pres.; Nancy Fesson, Vice-Pres.; Betty Howell, Patricia Simon, Mary Reeder, Mary Johnson, Leola Laster, Margaret Smith, Judith Pruitt, and Yvonne Ramey.





## SOCIAL SCIENCE CLUB



President—Barbara Martin; Vice-President—Cecile Ganpatsingh

## HOME ECONOMICS CLUB

President—Bessie Sallaway; Vice-President—Glenzy Thomas



## BIOLOGY CLUB

President—Bettie Durrah; Vice-President—Charles Kendrick





## GLEE CLUB



The Spelman Glee Club is a musical organization composed entirely of Spelman students. It represents the college on Founders Day, Commencement, and at the various concerts presented.

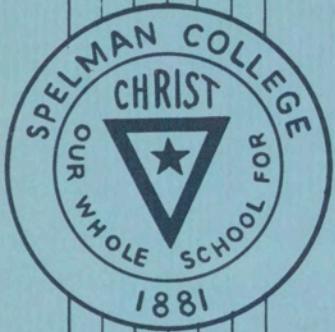
## AMS PLAYERS



The Atlanta University-Morehouse-Spelman Players Group has as its primary function the training of students in the arts of the theatre.

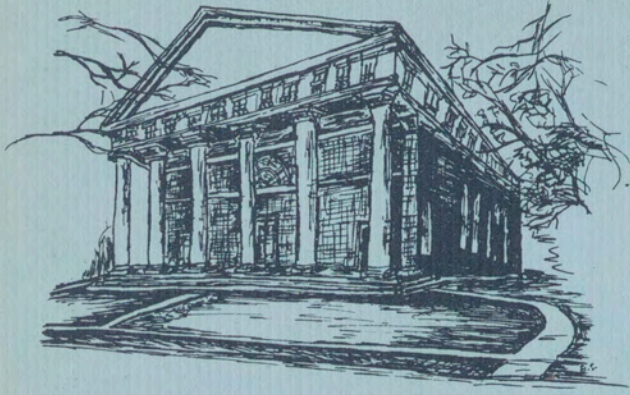
Picture from *Between Two Thieves*  
by Diego Fabbri





# FEATURES *and* HONORS





ON THE FOLLOWING PAGES:

FEATURES  
ACTIVITIES  
HONORS  
FAREWELLS  
PATRONS and  
ADVERTISEMENTS





OUR PRESIDENT AND FIRST LADY













## Atlanta Symphony Orchestra

Henry Sopkin, Conductor

## Alirio Diaz

The season of cultural activities began this year with a concert by Alirio Diaz, Classic Guitarist. Demonstrating great artistry, Mr. Diaz performed works by Bach, Scarlatti, Fernando Sor, and South American composers.







### Ceylon National Dancers

Performing centuries old dances of unique form, content and beauty, the Ceylon National Dancers captivated their Spelman audience as no other dance group has for many years.

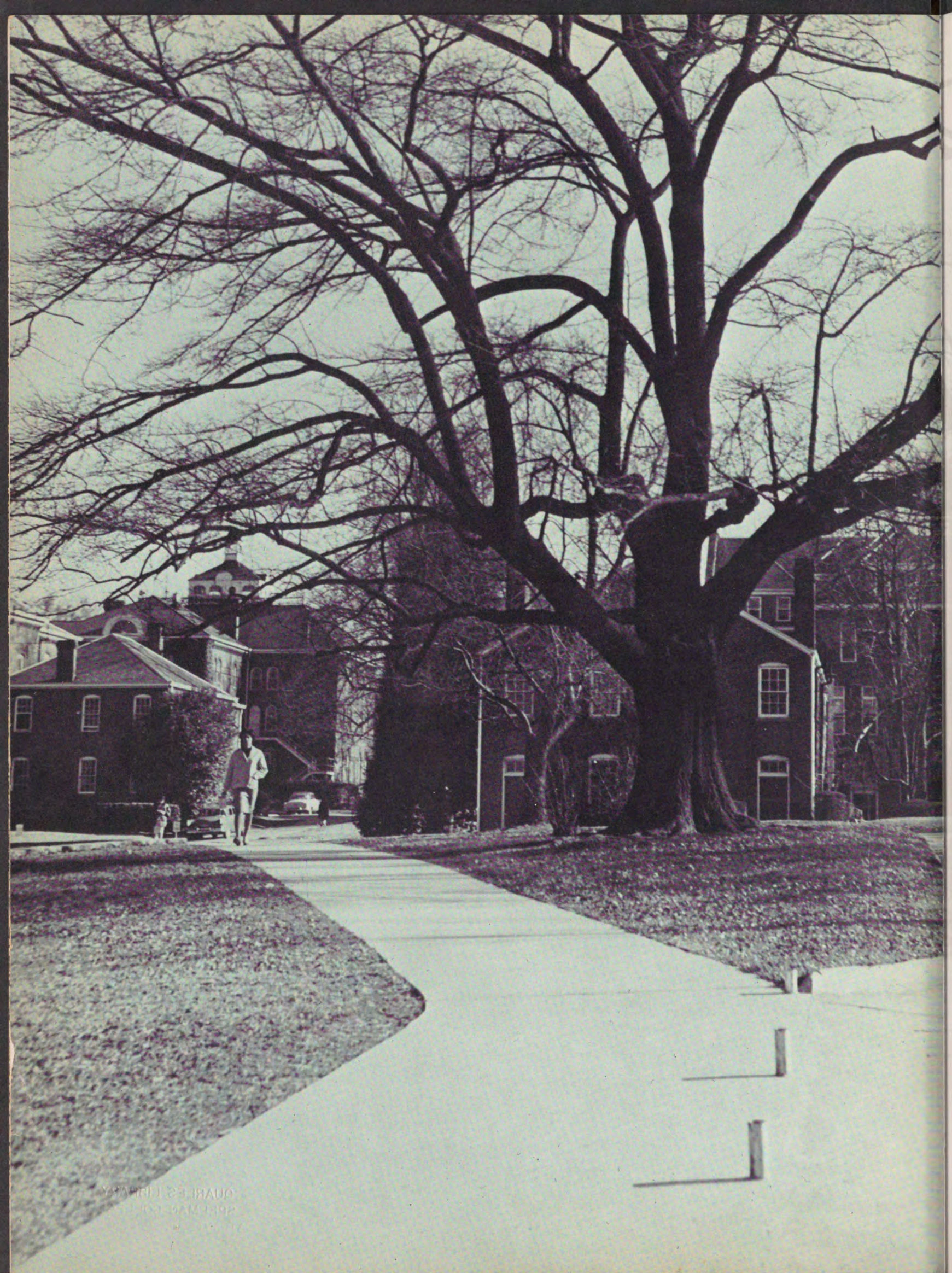
Dancers and drummer-dancers from both the northern province of the Kandy kings and the south of Ceylon gave dazzling performances of folk and traditional nature.

In this picture all dancers are in court costume. At center are the

Kandy Dancers of the North; to the left and right of them, dancers of the South; at the extreme left, one of Ceylon's greatest drummers; and at the extreme right, the daughter of the great Guneya (founder of the group), one of the few women allowed to dance any of the Kandy dances.

The group was brought to Spelman under the auspices of the Non-Western Studies Program.





QUARLES LIBRARY  
APR 1968  
W. H. QUARLES





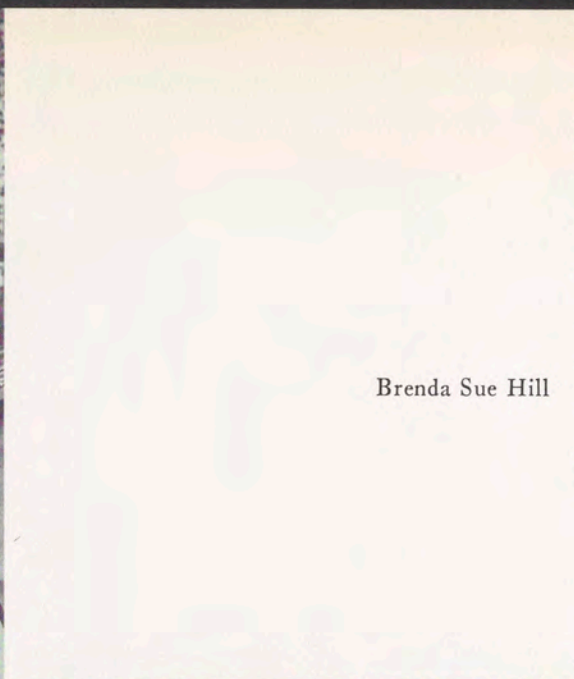
## MERRILL SCHOLARS

Selection as a Merrill Scholar is the highest honor a student can receive at Spelman. Each year, two students who demonstrate, among other things, exceptional ability in academic work and commensurate performance in their contributions to campus life, are awarded this honor by an administration-faculty committee. At present, Marilyn Pryce (class of '63) and Joan Andrews (class of '62) are studying in Europe. Nelda King and Beverly Whatley, both juniors, have been selected as Merrill Scholars for the 1962-63 school year.





Ora Bruno



Brenda Sue Hill



Rhoda Horne



Carol Ann Jackson

Selection of *Who's Who* is a mark of national distinction. The organization is designed to inspire greater effort and to reward outstanding activity and achievement.



Nelda J. King







Minnie L. Riley



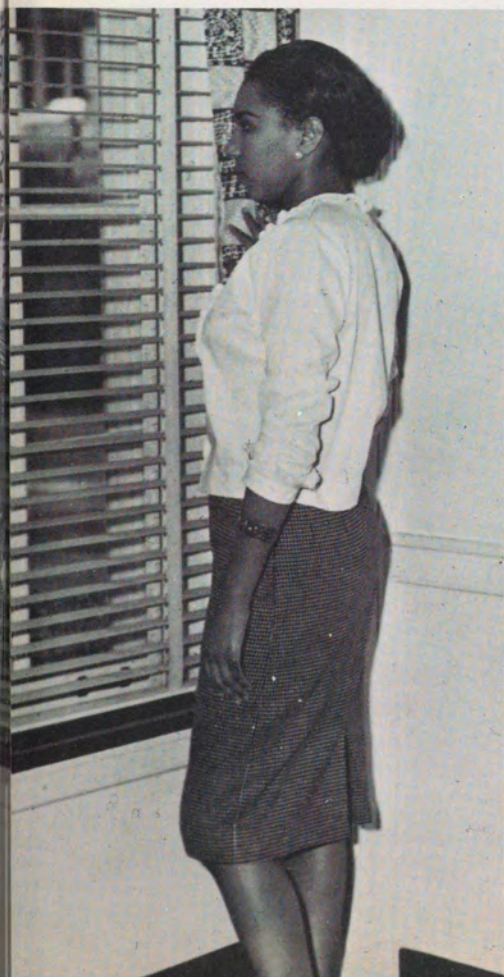
Electa Twyman



Priscilla F. Rowe

*Spelman representatives* in this honorary organization are voted upon by the student body from a ballot listing the top ten students from the junior and senior classes.

Mary F. Watts



Patricia M. White



# The Exchange Program

The idea of an exchange program to be carried on by Spelman and white institutions in the north was first proposed by Dr. Howard Zinn, Chairman of the Department of History and Social Science.

It has been mainly through his efforts that the program has come into being and through the continued efforts of Dr. Renate Wolf that the program has become an important part of Spelman life.

The main purpose of the Exchange Program is to provide both the Spelman student and the student from the participating college with the advantages of human contacts and experiences which they could not get in their home colleges.

Spelman students selected to participate in the program attend northern, predominantly white colleges for one semester or an entire year. In return, students from the participating college spend a semester or a year at Spelman.

Short exchanges are also a part of the Exchange Program. During the short exchanges Spelman students spend seven days at the participating school and in return, students from the participating college spend seven days at Spelman. Participating in the Short Exchange Program this year are Sarah Lawrence College, Bronxville, New York and Smith College, Northampton, Massachusetts.

Not pictured are Margie Price and Margaret Woodward who are spending the 1961-62 school year at Bethel College, North Newton, Kansas.

## FIRST SEMESTER EXCHANGE STUDENTS (L. Peters and A. Weaver—Year Exchange)

*Left to Right:* Lois Peters, Bethel College, North Newton, Kansas; Mary Katherine Humm, Illinois Wesleyan, Bloomington, Illinois; Marilea White, Illinois Wesleyan, Bloomington, Illinois; Anna Jo Weaver, Bethel College, North Newton, Kansas.

## SPELMAN EXCHANGE STUDENTS

*Front Row:* Dorothy Myers, Western College, Oxford, Ohio; Barbara Douglas, Carleton College, Northfield, Minnesota; Georgianne Thomas, North Central College, Naperville, Illinois; Alice Morgan, Illinois Wesleyan, Bloomington, Illinois. *Back Row:* Edwina Palmer, Elmira College, Elmira, New York; Bernette Joshua, Southwestern College, Winfield Kansas; Jean Berrien, Elmira College, Elmira, New York; Lucia Holloway, Illinois Wesleyan, Bloomington, Illinois.

## SECOND SEMESTER EXCHANGE STUDENTS

*Front Row:* Cathy Cade, Carleton College; Ann Beilby, Western College; Constance Kellogg, Southwestern College. *Back Row:* Joyce Carncross, North Central College; Susan Gates, North Central; Linda Hill, Elmira College; Terry Van Atta, Elmira College.





#### FOREIGN STUDENTS

Our six foreign students are Dorcas Boit and Jennifer Ragwar from Kenya, Africa; Constance Nabwire and Esta Bezhura from Uganda, Africa; Caroline Nicol from Sierra Leone, Africa, and Cecile Ganpatsingh from British Guiana, South America. As Spelman students they are working hard in their various fields of endeavor in order that they may make meaningful contributions to their communities upon their return.





## GRADY STUDENTS

The Grady School of Nursing has been affiliated with Spelman since 1959. In order to fulfill state requirements, Grady students are required to take certain courses not offered at Grady. Therefore Grady students take such courses as biology, chemistry, and psychology at Spelman.





MISS MAROON AND WHITE AND ATTENDANTS



First attendant, Gloria Johnson; Brenda Sue Hill, Miss Maroon and White; Second Attendant, Rochelle Rhodes.





Front row: left to right—M. Goodwin, E. Persons, N. Springer, V. Gardner, C. Jackson, L. Holloway, L. Stokes, I. McCree. Back row: left to right—R. Smith, M. Hampotn, L. Taylor, A. Washington, B. Hill, N. Fesson, B. Stevens, D. Jenkins, (not pictured) E. Bradshaw, V. Shivers, M. Evans.

*Student counseling* is in its first year of operation at Spelman. Student counselors serve as assistants to the housemothers and as student advisors in the various dormitories.



This year is the first year that *Chadwick Hall* has been operated as an *honor dormitory*. Residents of Chadwick Hall were chosen mainly on the basis of character and maturity. The residents of Chadwick are:

First row: left to right—P. Rowe, L. Weston, M. Randall, D. Boit, J. Dunbar, C. Jackson, A. Morgan, A. Herring, B. Douglas, B. Stevens. Second row: left to right—B. Bursey, C. Prioleau, P. White, N. King, O. Bruno, A. Irvin, O. McDougal, B. Brown. Third row: left to right—O. Gilbert, V. Gilham, L. Wilson, L. Taylor, G. Welch, B. Adams, G. McCants, G. Thomas, A. Sampson, N. Shelton, S. Smith. (Not pictured) G. Eagleson, M. Riley, D. Alexander, B. Martin, E. Terry, A. Wiggins.





THANKSGIVING RALLY  
(Baskets in background)

## FAREWELLS

Members of the senior class bid farewell to the Spelman traditions that have inspired them and guided them through their college years.

CHAPEL . . . Mondays, Wednesdays, and Fridays . . . eight o'clock . . . inspirational talks . . . beautiful organ music . . . meaningful hymns.

VESPER . . . Sundays . . . three o'clock . . . spiritual awakening . . . renditions by the Chorus . . . Glee Club selections . . . favorite spirituals.

MID-WEEK . . . Thursdays . . . 6:45 p.m. . . . quiet communion through prayer.

THANKSGIVING RALLY . . . Raising money . . . competition among classes . . . Thanksgiving baskets . . . delivery of baskets to select families.

CHRISTMAS CAROL . . . Magnificent perform-

ances . . . creativity . . . variety . . . polish . . . the true spirit of Christmas rendered through song.

UNIVERSITY CENTER CONVOCATION . . .

A stimulating speech . . . distinguished platform guests . . . coming together of the student body, faculty, and administration of the colleges in the Atlanta University center.

RELIGIOUS EMPHASIS WEEK . . . Religious awakening . . . discussion of different aspects of religious life.

FOUNDERS DAY . . . Wearing of senior caps and gowns for the first time . . . white dresses for juniors, sophomores, and freshmen . . . platform dignitaries . . . an expression of our feelings of gratitude to the founders of our institution.





Sam's got the "cats".



Notthin' like workin'



We live for mail!



"Dreamy eyes"



Packin' to go nowhere—



Now, man breathes by . . . .



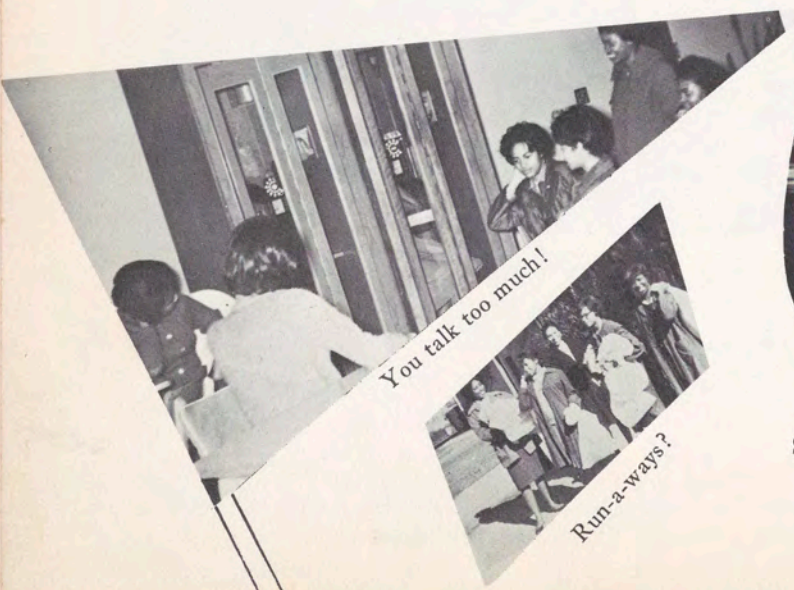
I'll take extra small.



Snooty?



Diggin' in



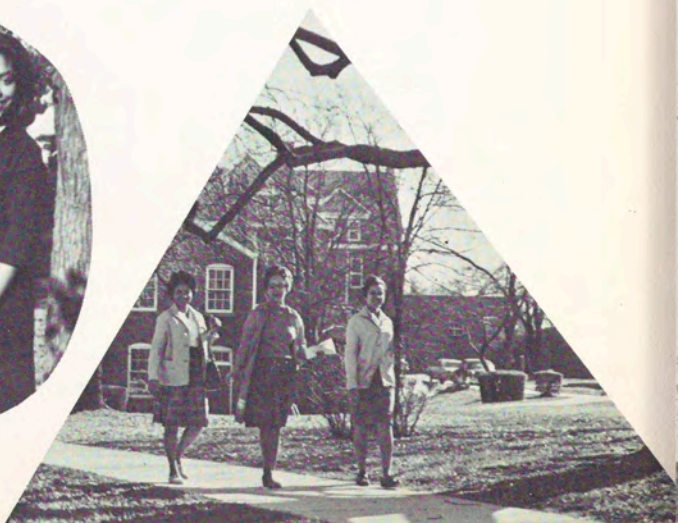
You talk too much!



Run-a-ways?



That Spelman poise



Strollin' down the avenue



# PATRONS

|                                 |                                 |                                  |
|---------------------------------|---------------------------------|----------------------------------|
| Sgt. and Mrs. Russell Adams     | Miss Loretta Hankerson          | Mrs. Doretha Payne               |
| Mrs. Elaine J. Adderly          | Mrs. Pearlle Hardy              | Mrs. Rubye Penson                |
| Miss Thelma Akers               | Miss Claressa Hightower         | Mrs. Minnie Phillips             |
| Mr. Herbert Amos, Jr.           | Mrs. Erma Hightower Harris      | Mrs. Senior Price                |
| Miss Katie Amy                  | Mrs. Dorothy Herring            | Mrs. Della Reynolds              |
| Mrs. Rosa Anderson              | Mrs. Mattie Herring             | Mr. and Mrs. Charles Robinson    |
| Mr. and Mrs. A. H. Arney        | Mrs. Pinkie Herring             | Miss Dorothy M. Robinson         |
| Mr. and Mrs. Cornelius Askew    | Mr. and Mrs. Joe Herron         | Mr. and Mrs. Emerson A. Robinson |
| Mr. and Mrs. Howard Attaway     | Mr. Albert Hill                 | Mrs. Hattie Robinson             |
| Rev. and Mrs. Curtis Banks      | Mrs. Alice Hood                 | Mr. and Mrs. Raymond Rosser      |
| Miss Lois Banks                 | Mr. Willie Horsely              | Mrs. Loma Rowe                   |
| Mrs. Ada Baxter                 | Mrs. Evelyn Ingram              | Mr. and Mrs. Robert J. Rowe, Jr. |
| Mr. and Mrs. M. Bayliss         | Mr. and Mrs. Horace Irvin       | Mrs. Dollie Sanders              |
| Mr. Della Bess                  | Mrs. Emogene Jackson            | Dr. and Mrs. Eugene Sherman      |
| Mr. and Mrs. Theodore Black     | Mrs. Clara Johnson              | Master Garry Sherman             |
| Mr. and Mrs. Richard Bond       | Miss Mercile Johnson            | Mr. and Mrs. Enzell Shorter      |
| Mrs. Sarah L. Borders           | Mr. and Mrs. Pasco Johnson      | Miss Geraldine Simmons           |
| Mr. Harvey Brimmer              | Mrs. Pearl Miller Johnson       | Mrs. Lois Smith                  |
| Mrs. Hattie B. Brown            | Mrs. Loretta Kateo              | Mrs. Christine Spikes            |
| Miss Lois Carter                | Dr. Douglas King                | Mrs. Bertha Stargell             |
| Mrs. Carmolita M. Clark         | Mrs. Willie D. Kirkland         | Mrs. Irene Stargell              |
| Miss Fannie M. Clark            | Mr. and Mrs. S. B. Lavette      | Mrs. Lydia Stargell              |
| Mr. and Mrs. Brewster Colclough | Mr. and Mrs. C. W. Leather      | Miss Gladys Thomas               |
| Mrs. Chaldine M. Dickerson      | Mr. and Mrs. Lawrence D. Lotson | Mr. Leon Thornton                |
| Mrs. Jeanne Doanes              | Mr. and Mrs. Staughton Lynd     | Mrs. Ella Thurmon                |
| Mr. and Mrs. Frank Dodson       | Dr. and Mrs. Albert Manley      | Miss Julia Titus                 |
| Dr. Oran W. Eagleson            | Mrs. Pauline Abbott Martin      | Mr. Claude Tucker                |
| Miss Barbara Eberman            | Dr. and Mrs. Benjamin E. Mays   | Mrs. Emma Lois Tucker            |
| Dr. William Fitzjohn            | Mrs. Myrtleene McCoy            | Mr. Howard Tucker                |
| Mrs. A. B. Flowers              | Pvt. Paul McPhail               | Mr. and Mrs. O. C. Washington    |
| James and Miriam Force          | Mr. and Mrs. Edward Miller      | Mr. and Mrs. Isaac West          |
| Mr. Paul A. Gary                | Sgt. and Mrs. W. T. Moore       | Miss Roberta West                |
| Miss Sarah Glass                | Mr. William Morris              | Mr. and Mrs. Joe E. White        |
| Mrs. Emily Glenn                | Mr. G. T. Murray                | Mrs. Amelia Whitlow              |
| Mr. and Mrs. Daniel T. Grant    | Dr. and Mrs. Ralph Murray       | Mrs. Beatrice E. Williams        |
| Mrs. Tommie Grooms              | Mr. X. L. Neal                  | Mrs. Hattie Wright               |
| Mr. H. E. Hall                  | Mr. and Mrs. Jesse O'Kelley     | Mr. Ralph Wright                 |
| Mrs. Jacquelyn Hall             | Miss Johnnie Parks              | Elder and Mrs. W. W. Wright      |
| Mr. Edwin Hankerson             | Mr. and Mrs. P. E. Parks        | Mr. Walter Wright                |
| Mr. and Mrs. Lorenzo Hankerson  | Mrs. Rosetta Hicks Peterson     | Mr. and Mrs. Willie Wright, Jr.  |
|                                 | Mr. and Mrs. Columbus Parnell   | Mr. and Mrs. C. R. Yates         |

*The REFLECTIONS Staff wishes to thank all persons listed above for their contributions.*



**BEST WISHES**

**Helen M. Sanders**

**Congratulations to Our Daughter**

**BARBARA J. ADAMS**

**Sgt. and Mrs. R. A. Adams**

*Compliments of*

**DR. & MRS. R. C. HACKNEY**

**Bar-B-Q Heaven**

783 Hunter St., N.W.

JA 4-9889

**Home of Atlanta's**

**BEST**

**Bar-B-Q**

Ernest Alexander

*Proprietor*

*Compliments of*

**CALLOWAY REALTY CO.**

193 Auburn Ave. Phone JA 2-4525



The President's Home—Reynolds Cottage



The Gymnasium—Read Hall



# **CAMPUS CHEFS, INC.**

125 Broad Street

ELIZABETH, NEW JERSEY

**Serves With Pride**

**the**

**Students and Faculty**

**of**

**Spelman College**

---

**Save With**

## **Mutual Federal Savings and Loan Association**

CURRENT INTEREST RATE

4%

Savings Insured Up to \$10,000





# ATLANTA'S MOST COMPLETE RECORD SHOP!

- PHONOGRAPH RECORDS
- RECORDING TAPES
- NEEDLES AND ACCESSORIES
- FAMOUS BRAND STEREOS, HI-FIS  
TAPE RECORDERS

**"ALWAYS THE LATEST IN  
POPULAR RECORDS"**

**876 HUNTER ST. <sup>S</sup>W JA. 4-9464**

**Photographs  
for any  
occasion**

**Let Dickerson take  
your graduation  
Pictures!**

CARL DICKERSON

Phone: MU 8-0979

Group pictures for the 1962 REFLECTIONS were  
taken by Dickerson

## **Paschal's Restaurant**

Parking Facilities

*Air-Conditioning*

CONTINUOUS DINNER MUSIC

830 Hunter St.

JA. 2-9136



Insurance Carriers for the University Center  
for over 20 yrs.

## **ALEXANDER & COMPANY**

**GENERAL INSURANCE  
&  
REAL ESTATE**

T. M. Alexander, Sr.  
*President*

208 Auburn Ave., N.E.

JA 1-0549

For the Best Protection  
Call One of Our Agents

## **SOUTHEASTERN FIDELITY FIRE INSURANCE CO.**

197 Auburn Avenue, N.E.

ATLANTA, GA.

Multiple Line Insurance

## **H. B. Smith, D.D.S.**

239 Auburn Ave., N.E.

ATLANTA, GA.

**Compliments**

**of**

**Radio Station  
W A O K**

**1380 On Your Dial**

Bus: JA. 2-6683-4    Res: MU. 8-6333

*"Quiet-Dignity"*

**MURDAUGH BROTHERS**

**Morticians**

**Lady Attendant**

**Private Ambulance at All Hours**

71 Piedmont Ave., N.E.    Atlanta, Ga.

**Congratulations to**

**our daughter**

**Priscilla F. Rowe**

**from**

**Mr. & Mrs. R. J. Rowe**



**CLINTON E. WARNER, M.D.**

**General Surgery**

Lew-Arner

Professional Building

319 West Lake Ave., S.W.

Atlanta 18, Georgia

Phone:

SY 4-8911

SY 4-8912

Hours 12-3 & 6-7 P.M.

Wed. 12-2, Sat. 12-4

Phone JA. 4-1611

Res. SY. 4-4211

**L. V. REESE, M.D.**

**Ophthalmology**

Diseases and Surgery of the Eye,  
and Refractions

Suite 416 - Herndon Bldg. 239 Auburn Ave., N.E.

ATLANTA 3, GA.

Phone: 525-9138

**B. B. BEAMON'S RESTAURANT**

OPEN 24 HOURS DAILY

Complete Catering Service

Private Dining Room

B. B. Beamon, *Prop.* 233-235 Auburn Ave., N.E.

ATLANTA 3, GEORGIA

*Compliments of*

**FRAZIERS CAFE SOCIETY**

880 Hunter St., S. W.

Atlanta, Ga.

**PARKS SHOE REBUILDERS**

864 Hunter St., S. W.

ATLANTA, GA.

866-7866

Telephone: MU 8-7748 200 Auburn Ave., N.E.

*"Pioneers in Improved Rental Property"*

**CORNELIUS KING & SON**

Renting Agents

ATLANTA 3, GA.

Office: MU 8-3259

Res: PL 5-7197

MU 8-3260

JOSEPH T. BICKERS

*Broker*

**J. T. BICKERS REALTY COMPANY**

187 Auburn Ave., N.E.

Atlanta, Ga.

Congratulations to

Our Daughter

**Elizabeth Ann Bradshaw**

**from**

**Mr. & Mrs. A. B. Bradshaw**

*Compliments of*

**James B. Ellison, M.D.**

Standard Oil Products

JA. 3-9518

**O. S. HALL SERVICE STATION**

Greasing - Washing - Waxing - Parking

Tires - Batteries - etc.

215 Auburn Ave., N. E.

ATLANTA, GA.

712 E. Bayard Street Office and Res. Phone East Point, Ga.  
POplar 1-3627

**WALKER'S FUNERAL HOME**

H. C. Walker, *Prop.*

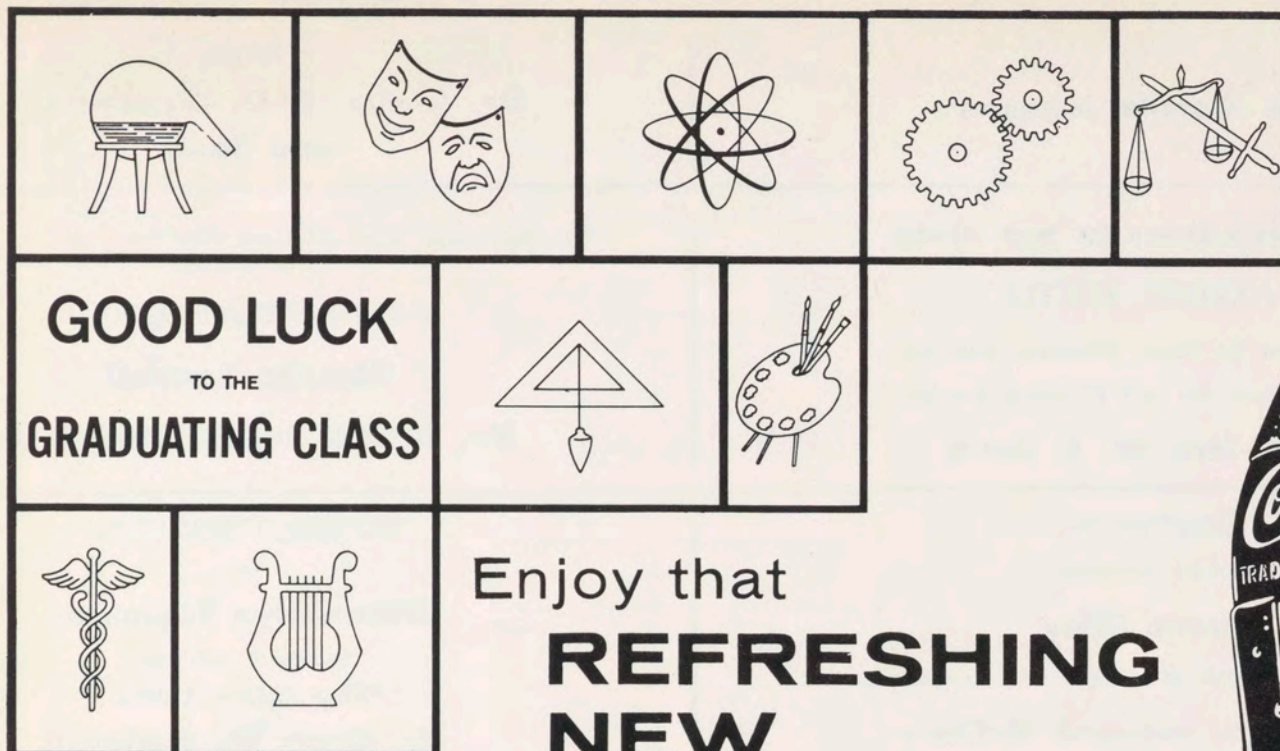
Mrs. A. M. Walker, *Secy.-Treas.*

Gus Thornhill Jr., *Ass't. Manager*

DAY OR NIGHT AMBULANCE SERVICE

*"Service While You Rest"*





BOTTLED UNDER AUTHORITY OF THE COCA-COLA COMPANY BY **THE ATLANTA COCA-COLA BOTTLING COMPANY**



Potato Chips

Fritos

Cornets

Bakon Puffs

Pretzels

Peanuts and Other  
Snack Foods

*Always Fresh*

## Atlanta World

Choose Journalism as a Career . . .

Atlanta Daily World

Founded August 5, 1928; Became Daily

March 13, 1932

Published Every Morning Except Monday

WRITERS . . . SALESMEN . . . PRINTERS

*"Read the World and Keep Informed"*

210 Auburn Avenue, N.E.

Phone: JA. 1-1459



Congratulations  
to the SENIOR CLASS  
from  
**Miss Mercile Johnson**

Congratulations to  
**DOROTHY ALEXANDER**  
from  
**Mr. & Mrs. T. M. Alexander, Jr.  
and Teddi**

**Congratulations to our niece**

**PATRICIA BATTLE**

May Success Be Yours Wherever You Are,  
Whatever You Do, and Wherever You Go.

**Mr. & Mrs. W. E. Davis**

The time comes when all those who desire and try very hard  
must succeed

CONGRATULATIONS TO

**Martha Randall**

**Mr. & Mrs. Julius Randall, Sr.**

Congratulations  
to Our Daughter

**Minnie Riley**

This is the last year of college! We are content.

**Mr. & Mrs. Leonard McClary**

CONGRATULATIONS  
to

**Gwendolyn Eagleson**

Success is not won  
When College is done.

**Mr. Oran W. Eagleson**

*Compliments of*

**DOROTHY E. ALEXANDER**

**Interiors and Designing**

Compliments of

**UNIVERSITY SHOE SHOP**

*Expert Workmanship*

Shoes dyed all colors

835 Fair Street

*Compliments of*

**HAUGABROOKS**

**Funeral Home**

364 Auburn Ave., N.E.

JA 2-8217

*Compliments of*

H  
E  
N  
D  
E  
R  
S  
O  
N

**TRAVEL  
SERVICE**

931 Hunter St., N.W.

Phone 522-6886



THE UNIVERSITY OF CHICAGO  
LIBRARY

THE UNIVERSITY OF CHICAGO  
LIBRARY

THE UNIVERSITY OF CHICAGO  
LIBRARY

THE UNIVERSITY OF CHICAGO  
LIBRARY

THE UNIVERSITY OF CHICAGO  
LIBRARY

THE UNIVERSITY OF CHICAGO  
LIBRARY





Lord, Thou hast been our dwelling-place  
In all generations  
Before the mountains were brought forth,  
Or ever Thou hast formed the earth and the world,  
From everlasting to everlasting,  
Thou art God.

A thousand years  
Are but as yesterday when past,  
And as a watch in the night.

The days of our years are three-score and ten,  
And if by reason of strength there be fourscore years:  
Yet is their strength labor and sorrow;  
For it is soon cut off and we fly away.

So teach us to number our days,  
That we may apply our hearts unto wisdom.  
Let Thy work appear before Thy servants,  
And Thy glory unto Thy children;  
And let the glory of the Lord Our God  
Be upon us.

And the work of our hands  
Establish Thou it.  
Yea the work of our hands  
Establish Thou it.

Adapted from Psalm 90 by  
W. L. James



